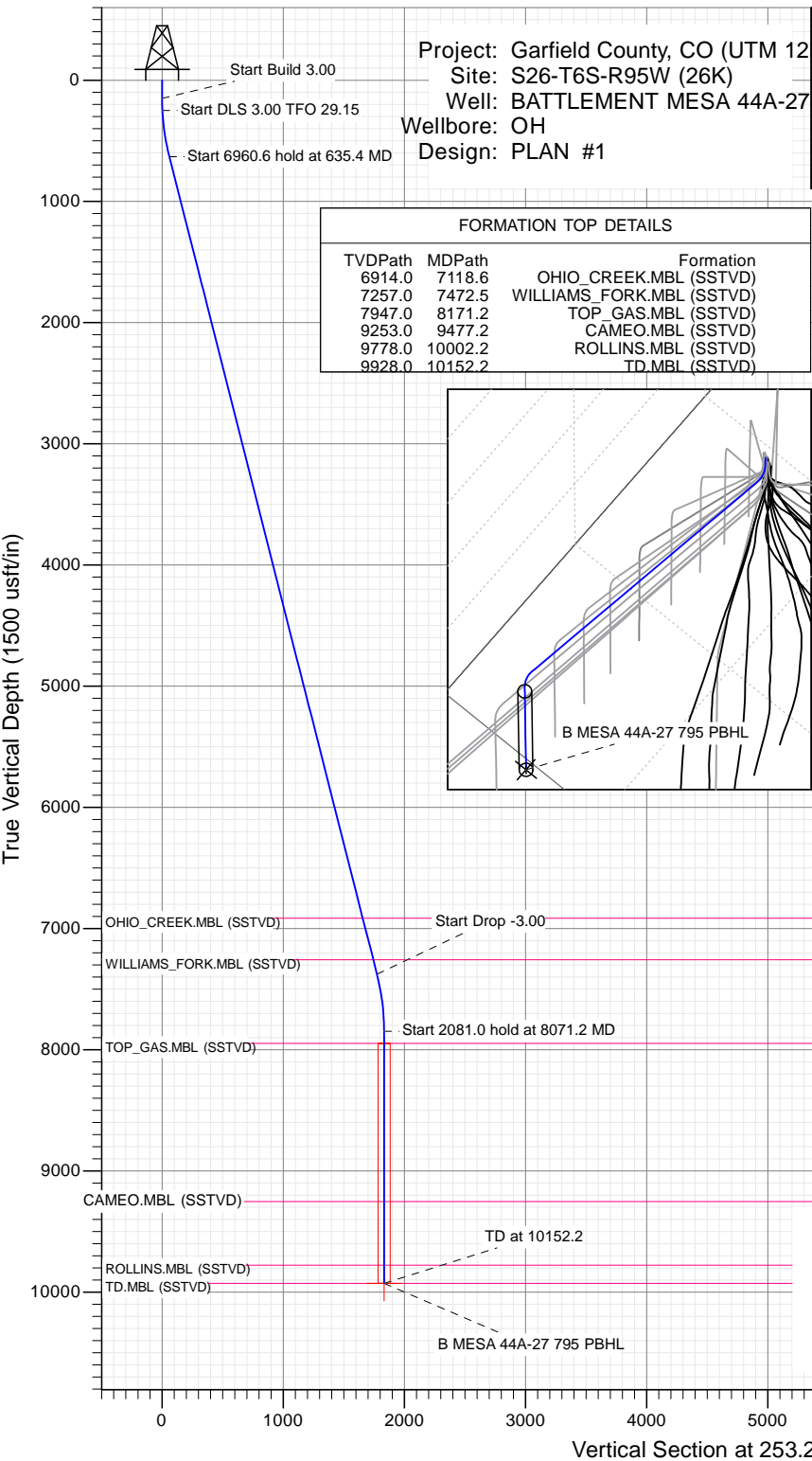




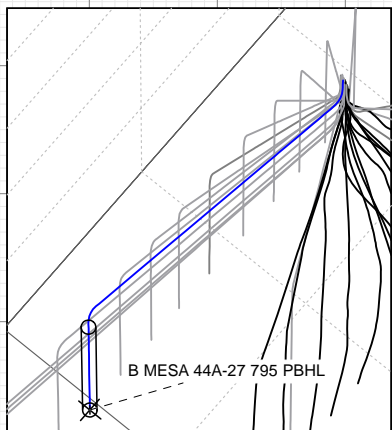
SECTION DETAILS

Sec	MD	Inc	Azi	TVD	+N/-S	+E/-W	Dleg	TFace	Vsect	Target
1	0.0	0.00	0.00	0.0	0.0	0.0	0.00	0.00	0.0	
2	150.0	0.00	0.00	150.0	0.0	0.0	0.00	0.00	0.0	
3	250.0	3.00	230.00	250.0	-1.7	-2.0	3.00	230.00	2.4	
4	635.4	14.25	253.36	630.4	-21.8	-55.4	3.00	29.15	59.3	
5	7596.0	14.25	253.36	7376.7	-512.6	-1697.5	0.00	0.00	1773.3	
6	8071.2	0.00	0.00	7847.0	-529.5	-1753.9	3.00	180.00	1832.1	
7	10152.2	0.00	0.00	9928.0	-529.5	-1753.9	0.00	0.00	1832.1	B MESA 44A-27 795 PBHL



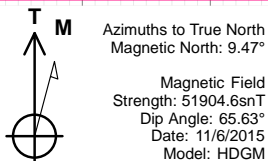
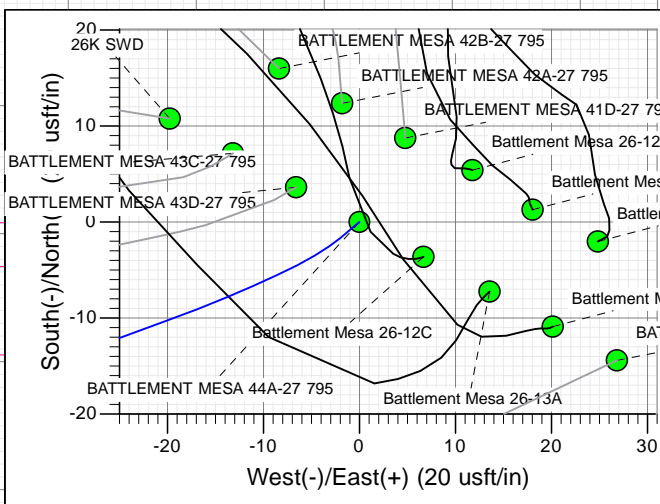
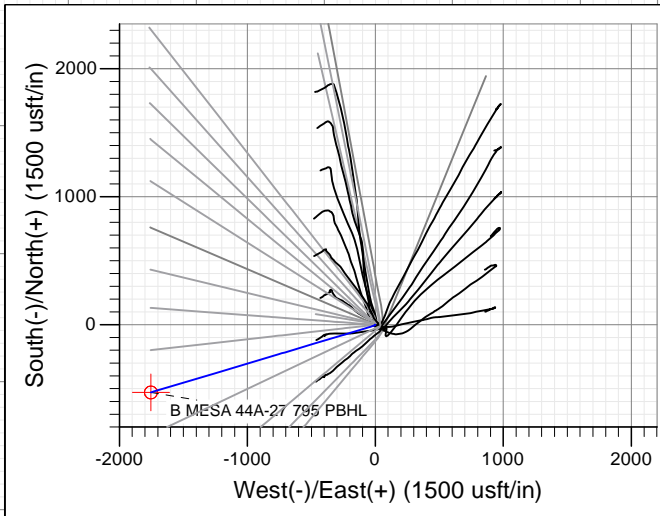
FORMATION TOP DETAILS

TVDPPath	MDPath	Formation
6914.0	7118.6	OHIO_CREEK.MBL (SSTVD)
7257.0	7472.5	WILLIAMS_FORK.MBL (SSTVD)
7947.0	8171.2	TOP_GAS.MBL (SSTVD)
9253.0	9477.2	CAMEO.MBL (SSTVD)
9778.0	10002.2	ROLLINS.MBL (SSTVD)
9928.0	10152.2	TD.MBL (SSTVD)



PLAN #1
BATTLEMENT MESA 44A-27 795
15XXX; LR
30 KB @ 8994.0usft
Ground Level @ 8964.0
NAD 1927 - Western US
Well BATTLEMENT MESA 44A-27 795, True North

Type	Target	Azimuth	Origin	N/S	E/W	From
TD	No Target (Freehand)	253.20	Type Slot	0.0	0.0	TVD 0.0
Name		TVD	+N/-S	+E/-W	Latitude	Longitude
B MESA 44A-27 795 PBHL		9928.0	-529.5	-1753.9	39.404387	-107.975929



CASING DETAILS

No casing data is available



WELL DETAILS: BATTLEMENT MESA 44A-27 795

Ground Level:	8964.0
+N/-S	0.0
+E/-W	0.0
Northing	14324079.60
Easting	2496457.80
Latitude	39.405840
Longitude	-107.969725



Planning Report

Database:	USA EDM 5000 Multi Users DB	Local Co-ordinate Reference:	Well BATTLEMENT MESA 44A-27 795
Company:	Caerus Oil & Gas	TVD Reference:	30' KB @ 8994.0usft
Project:	Garfield County, CO (UTM 12N)	MD Reference:	30' KB @ 8994.0usft
Site:	S26-T6S-R95W (26K)	North Reference:	True
Well:	BATTLEMENT MESA 44A-27 795	Survey Calculation Method:	Minimum Curvature
Wellbore:	OH		
Design:	PLAN #1		

Project	Garfield County, CO (UTM 12N)		
Map System:	Universal Transverse Mercator (US Survey Feet)	System Datum:	Mean Sea Level
Geo Datum:	NAD 1927 - Western US		
Map Zone:	Zone 12N (114 W to 108 W)		

Site	S26-T6S-R95W (26K)				
Site Position:		Northing:	14,324,088.50 usft	Latitude:	39.405864
From:	Map	Easting:	2,496,462.30 usft	Longitude:	-107.969708
Position Uncertainty:	0.0 usft	Slot Radius:	13-3/16"	Grid Convergence:	1.92 °

Well	BATTLEMENT MESA 44A-27 795					
Well Position	+N/-S	0.0 usft	Northing:	14,324,079.60 usft	Latitude:	39.405840
	+E/-W	0.0 usft	Easting:	2,496,457.80 usft	Longitude:	-107.969725
Position Uncertainty		0.0 usft	Wellhead Elevation:	0.0 usft	Ground Level:	8,964.0 usft

Wellbore	OH				
Magnetics	Model Name	Sample Date	Declination	Dip Angle	Field Strength
	HDGM	11/6/2015	(°) 9.47	(°) 65.63	(nT) 51,905

Design	PLAN #1			
Audit Notes:				
Version:	Phase:	PLAN	Tie On Depth:	0.0
Vertical Section:	Depth From (TVD)	+N/-S	+E/-W	Direction
	(usft)	(usft)	(usft)	(°)
	0.0	0.0	0.0	253.20

Plan Sections										
Measured Depth (usft)	Inclination (°)	Azimuth (°)	Vertical Depth (usft)	+N/-S (usft)	+E/-W (usft)	Dogleg Rate (°/100usft)	Build Rate (°/100usft)	Turn Rate (°/100usft)	TFO (°)	Target
0.0	0.00	0.00	0.0	0.0	0.0	0.00	0.00	0.00	0.00	
150.0	0.00	0.00	150.0	0.0	0.0	0.00	0.00	0.00	0.00	
250.0	3.00	230.00	250.0	-1.7	-2.0	3.00	3.00	0.00	230.00	
635.4	14.25	253.36	630.4	-21.8	-55.4	3.00	2.92	6.06	29.15	
7,596.0	14.25	253.36	7,376.7	-512.6	-1,697.5	0.00	0.00	0.00	0.00	
8,071.2	0.00	0.00	7,847.0	-529.5	-1,753.9	3.00	-3.00	0.00	180.00	
10,152.2	0.00	0.00	9,928.0	-529.5	-1,753.9	0.00	0.00	0.00	0.00	B MESA 44A-27 795 I

Planning Report

Database:	USA EDM 5000 Multi Users DB	Local Co-ordinate Reference:	Well BATTLEMENT MESA 44A-27 795
Company:	Caerus Oil & Gas	TVD Reference:	30' KB @ 8994.0usft
Project:	Garfield County, CO (UTM 12N)	MD Reference:	30' KB @ 8994.0usft
Site:	S26-T6S-R95W (26K)	North Reference:	True
Well:	BATTLEMENT MESA 44A-27 795	Survey Calculation Method:	Minimum Curvature
Wellbore:	OH		
Design:	PLAN #1		

Planned Survey									
Measured Depth (usft)	Inclination (°)	Azimuth (°)	Vertical Depth (usft)	+N/-S (usft)	+E/-W (usft)	Vertical Section (usft)	Dogleg Rate (°/100usft)	Build Rate (°/100u)	Comments / Formations
0.0	0.00	0.00	0.0	0.0	0.0	0.0	0.00	0.00	
100.0	0.00	0.00	100.0	0.0	0.0	0.0	0.00	0.00	
150.0	0.00	0.00	150.0	0.0	0.0	0.0	0.00	0.00	Start Build 3.00
200.0	1.50	230.00	200.0	-0.4	-0.5	0.6	3.00	3.00	
250.0	3.00	230.00	250.0	-1.7	-2.0	2.4	3.00	3.00	Start DLS 3.00 TFO 29.15
300.0	4.37	239.63	299.9	-3.5	-4.7	5.5	3.00	2.74	
400.0	7.27	247.59	399.3	-7.8	-13.8	15.5	3.00	2.90	
500.0	10.22	250.99	498.2	-13.1	-28.0	30.6	3.00	2.96	
600.0	13.20	252.88	596.1	-19.4	-47.3	50.9	3.00	2.98	
635.4	14.25	253.36	630.4	-21.8	-55.4	59.3	3.00	2.98	Start 6960.6 hold at 635.4 MD
700.0	14.25	253.36	693.1	-26.4	-70.6	75.2	0.00	0.00	
800.0	14.25	253.36	790.0	-33.4	-94.2	99.9	0.00	0.00	
900.0	14.25	253.36	886.9	-40.5	-117.8	124.5	0.00	0.00	
1,000.0	14.25	253.36	983.8	-47.5	-141.4	149.1	0.00	0.00	
1,100.0	14.25	253.36	1,080.7	-54.6	-165.0	173.7	0.00	0.00	
1,200.0	14.25	253.36	1,177.7	-61.6	-188.6	198.3	0.00	0.00	
1,300.0	14.25	253.36	1,274.6	-68.7	-212.2	223.0	0.00	0.00	
1,400.0	14.25	253.36	1,371.5	-75.7	-235.8	247.6	0.00	0.00	
1,500.0	14.25	253.36	1,468.4	-82.8	-259.4	272.2	0.00	0.00	
1,600.0	14.25	253.36	1,565.3	-89.8	-282.9	296.8	0.00	0.00	
1,700.0	14.25	253.36	1,662.3	-96.9	-306.5	321.5	0.00	0.00	
1,800.0	14.25	253.36	1,759.2	-103.9	-330.1	346.1	0.00	0.00	
1,900.0	14.25	253.36	1,856.1	-111.0	-353.7	370.7	0.00	0.00	
2,000.0	14.25	253.36	1,953.0	-118.0	-377.3	395.3	0.00	0.00	
2,100.0	14.25	253.36	2,050.0	-125.1	-400.9	420.0	0.00	0.00	
2,200.0	14.25	253.36	2,146.9	-132.2	-424.5	444.6	0.00	0.00	
2,300.0	14.25	253.36	2,243.8	-139.2	-448.1	469.2	0.00	0.00	
2,400.0	14.25	253.36	2,340.7	-146.3	-471.7	493.8	0.00	0.00	
2,500.0	14.25	253.36	2,437.6	-153.3	-495.3	518.4	0.00	0.00	
2,600.0	14.25	253.36	2,534.6	-160.4	-518.9	543.1	0.00	0.00	
2,700.0	14.25	253.36	2,631.5	-167.4	-542.5	567.7	0.00	0.00	
2,800.0	14.25	253.36	2,728.4	-174.5	-566.1	592.3	0.00	0.00	
2,900.0	14.25	253.36	2,825.3	-181.5	-589.6	616.9	0.00	0.00	
3,000.0	14.25	253.36	2,922.2	-188.6	-613.2	641.6	0.00	0.00	
3,100.0	14.25	253.36	3,019.2	-195.6	-636.8	666.2	0.00	0.00	
3,200.0	14.25	253.36	3,116.1	-202.7	-660.4	690.8	0.00	0.00	
3,300.0	14.25	253.36	3,213.0	-209.7	-684.0	715.4	0.00	0.00	
3,400.0	14.25	253.36	3,309.9	-216.8	-707.6	740.1	0.00	0.00	
3,500.0	14.25	253.36	3,406.8	-223.8	-731.2	764.7	0.00	0.00	
3,600.0	14.25	253.36	3,503.8	-230.9	-754.8	789.3	0.00	0.00	
3,700.0	14.25	253.36	3,600.7	-237.9	-778.4	813.9	0.00	0.00	
3,800.0	14.25	253.36	3,697.6	-245.0	-802.0	838.6	0.00	0.00	
3,900.0	14.25	253.36	3,794.5	-252.0	-825.6	863.2	0.00	0.00	
4,000.0	14.25	253.36	3,891.5	-259.1	-849.2	887.8	0.00	0.00	
4,100.0	14.25	253.36	3,988.4	-266.1	-872.8	912.4	0.00	0.00	
4,200.0	14.25	253.36	4,085.3	-273.2	-896.3	937.0	0.00	0.00	
4,300.0	14.25	253.36	4,182.2	-280.2	-919.9	961.7	0.00	0.00	
4,400.0	14.25	253.36	4,279.1	-287.3	-943.5	986.3	0.00	0.00	
4,500.0	14.25	253.36	4,376.1	-294.3	-967.1	1,010.9	0.00	0.00	
4,600.0	14.25	253.36	4,473.0	-301.4	-990.7	1,035.5	0.00	0.00	
4,700.0	14.25	253.36	4,569.9	-308.4	-1,014.3	1,060.2	0.00	0.00	
4,800.0	14.25	253.36	4,666.8	-315.5	-1,037.9	1,084.8	0.00	0.00	

Planning Report

Database:	USA EDM 5000 Multi Users DB	Local Co-ordinate Reference:	Well BATTLEMENT MESA 44A-27 795
Company:	Caerus Oil & Gas	TVD Reference:	30' KB @ 8994.0usft
Project:	Garfield County, CO (UTM 12N)	MD Reference:	30' KB @ 8994.0usft
Site:	S26-T6S-R95W (26K)	North Reference:	True
Well:	BATTLEMENT MESA 44A-27 795	Survey Calculation Method:	Minimum Curvature
Wellbore:	OH		
Design:	PLAN #1		

Planned Survey									
Measured Depth (usft)	Inclination (°)	Azimuth (°)	Vertical Depth (usft)	+N/-S (usft)	+E/-W (usft)	Vertical Section (usft)	Dogleg Rate (°/100usft)	Build Rate (°/100u)	Comments / Formations
4,900.0	14.25	253.36	4,763.7	-322.5	-1,061.5	1,109.4	0.00	0.00	
5,000.0	14.25	253.36	4,860.7	-329.6	-1,085.1	1,134.0	0.00	0.00	
5,100.0	14.25	253.36	4,957.6	-336.6	-1,108.7	1,158.7	0.00	0.00	
5,200.0	14.25	253.36	5,054.5	-343.7	-1,132.3	1,183.3	0.00	0.00	
5,300.0	14.25	253.36	5,151.4	-350.7	-1,155.9	1,207.9	0.00	0.00	
5,400.0	14.25	253.36	5,248.3	-357.8	-1,179.5	1,232.5	0.00	0.00	
5,500.0	14.25	253.36	5,345.3	-364.8	-1,203.0	1,257.1	0.00	0.00	
5,600.0	14.25	253.36	5,442.2	-371.9	-1,226.6	1,281.8	0.00	0.00	
5,700.0	14.25	253.36	5,539.1	-379.0	-1,250.2	1,306.4	0.00	0.00	
5,800.0	14.25	253.36	5,636.0	-386.0	-1,273.8	1,331.0	0.00	0.00	
5,900.0	14.25	253.36	5,733.0	-393.1	-1,297.4	1,355.6	0.00	0.00	
6,000.0	14.25	253.36	5,829.9	-400.1	-1,321.0	1,380.3	0.00	0.00	
6,100.0	14.25	253.36	5,926.8	-407.2	-1,344.6	1,404.9	0.00	0.00	
6,200.0	14.25	253.36	6,023.7	-414.2	-1,368.2	1,429.5	0.00	0.00	
6,300.0	14.25	253.36	6,120.6	-421.3	-1,391.8	1,454.1	0.00	0.00	
6,400.0	14.25	253.36	6,217.6	-428.3	-1,415.4	1,478.8	0.00	0.00	
6,500.0	14.25	253.36	6,314.5	-435.4	-1,439.0	1,503.4	0.00	0.00	
6,600.0	14.25	253.36	6,411.4	-442.4	-1,462.6	1,528.0	0.00	0.00	
6,700.0	14.25	253.36	6,508.3	-449.5	-1,486.1	1,552.6	0.00	0.00	
6,800.0	14.25	253.36	6,605.2	-456.5	-1,509.7	1,577.3	0.00	0.00	
6,900.0	14.25	253.36	6,702.2	-463.6	-1,533.3	1,601.9	0.00	0.00	
7,000.0	14.25	253.36	6,799.1	-470.6	-1,556.9	1,626.5	0.00	0.00	
7,100.0	14.25	253.36	6,896.0	-477.7	-1,580.5	1,651.1	0.00	0.00	
7,118.6	14.25	253.36	6,914.0	-479.0	-1,584.9	1,655.7	0.00	0.00	OHIO_CREEK.MBL (SSTVD)
7,200.0	14.25	253.36	6,992.9	-484.7	-1,604.1	1,675.7	0.00	0.00	
7,300.0	14.25	253.36	7,089.8	-491.8	-1,627.7	1,700.4	0.00	0.00	
7,400.0	14.25	253.36	7,186.8	-498.8	-1,651.3	1,725.0	0.00	0.00	
7,472.5	14.25	253.36	7,257.0	-503.9	-1,668.4	1,742.8	0.00	0.00	WILLIAMS_FORK.MBL (SSTVD)
7,500.0	14.25	253.36	7,283.7	-505.9	-1,674.9	1,749.6	0.00	0.00	
7,596.0	14.25	253.36	7,376.7	-512.6	-1,697.5	1,773.3	0.00	0.00	Start Drop -3.00
7,600.0	14.13	253.36	7,380.6	-512.9	-1,698.5	1,774.2	3.00	-3.00	
7,700.0	11.13	253.36	7,478.2	-519.2	-1,719.4	1,796.1	3.00	-3.00	
7,800.0	8.13	253.36	7,576.8	-524.0	-1,735.5	1,812.8	3.00	-3.00	
7,900.0	5.13	253.36	7,676.1	-527.3	-1,746.5	1,824.4	3.00	-3.00	
8,000.0	2.13	253.36	7,775.9	-529.1	-1,752.6	1,830.7	3.00	-3.00	
8,071.2	0.00	0.00	7,847.0	-529.5	-1,753.9	1,832.1	3.00	-3.00	Start 2081.0 hold at 8071.2 MD
8,100.0	0.00	0.00	7,875.8	-529.5	-1,753.9	1,832.1	0.00	0.00	
8,171.2	0.00	0.00	7,947.0	-529.5	-1,753.9	1,832.1	0.00	0.00	TOP_GAS.MBL (SSTVD)
8,200.0	0.00	0.00	7,975.8	-529.5	-1,753.9	1,832.1	0.00	0.00	
8,300.0	0.00	0.00	8,075.8	-529.5	-1,753.9	1,832.1	0.00	0.00	
8,400.0	0.00	0.00	8,175.8	-529.5	-1,753.9	1,832.1	0.00	0.00	
8,500.0	0.00	0.00	8,275.8	-529.5	-1,753.9	1,832.1	0.00	0.00	
8,600.0	0.00	0.00	8,375.8	-529.5	-1,753.9	1,832.1	0.00	0.00	
8,700.0	0.00	0.00	8,475.8	-529.5	-1,753.9	1,832.1	0.00	0.00	
8,800.0	0.00	0.00	8,575.8	-529.5	-1,753.9	1,832.1	0.00	0.00	
8,900.0	0.00	0.00	8,675.8	-529.5	-1,753.9	1,832.1	0.00	0.00	
9,000.0	0.00	0.00	8,775.8	-529.5	-1,753.9	1,832.1	0.00	0.00	
9,100.0	0.00	0.00	8,875.8	-529.5	-1,753.9	1,832.1	0.00	0.00	
9,200.0	0.00	0.00	8,975.8	-529.5	-1,753.9	1,832.1	0.00	0.00	
9,300.0	0.00	0.00	9,075.8	-529.5	-1,753.9	1,832.1	0.00	0.00	
9,400.0	0.00	0.00	9,175.8	-529.5	-1,753.9	1,832.1	0.00	0.00	
9,477.2	0.00	0.00	9,253.0	-529.5	-1,753.9	1,832.1	0.00	0.00	CAMEO.MBL (SSTVD)

Planning Report

Database:	USA EDM 5000 Multi Users DB	Local Co-ordinate Reference:	Well BATTLEMENT MESA 44A-27 795
Company:	Caerus Oil & Gas	TVD Reference:	30' KB @ 8994.0usft
Project:	Garfield County, CO (UTM 12N)	MD Reference:	30' KB @ 8994.0usft
Site:	S26-T6S-R95W (26K)	North Reference:	True
Well:	BATTLEMENT MESA 44A-27 795	Survey Calculation Method:	Minimum Curvature
Wellbore:	OH		
Design:	PLAN #1		

Planned Survey									
Measured Depth (usft)	Inclination (°)	Azimuth (°)	Vertical Depth (usft)	+N/-S (usft)	+E/-W (usft)	Vertical Section (usft)	Dogleg Rate (°/100usft)	Build Rate (°/100u)	Comments / Formations
9,500.0	0.00	0.00	9,275.8	-529.5	-1,753.9	1,832.1	0.00	0.00	
9,600.0	0.00	0.00	9,375.8	-529.5	-1,753.9	1,832.1	0.00	0.00	
9,700.0	0.00	0.00	9,475.8	-529.5	-1,753.9	1,832.1	0.00	0.00	
9,800.0	0.00	0.00	9,575.8	-529.5	-1,753.9	1,832.1	0.00	0.00	
9,900.0	0.00	0.00	9,675.8	-529.5	-1,753.9	1,832.1	0.00	0.00	
10,000.0	0.00	0.00	9,775.8	-529.5	-1,753.9	1,832.1	0.00	0.00	
10,002.2	0.00	0.00	9,778.0	-529.5	-1,753.9	1,832.1	0.00	0.00	ROLLINS.MBL (SSTVD)
10,100.0	0.00	0.00	9,875.8	-529.5	-1,753.9	1,832.1	0.00	0.00	
10,152.2	0.00	0.00	9,928.0	-529.5	-1,753.9	1,832.1	0.00	0.00	TD at 10152.2 - TD.MBL (SSTVD)

Targets											
Target Name	- hit/miss target	- Shape	Dip Angle (°)	Dip Dir. (°)	TVD (usft)	+N/-S (usft)	+E/-W (usft)	Northing (usft)	Easting (usft)	Latitude	Longitude
B MESA 44A-27 795 PB			0.00	0.00	9,928.0	-529.5	-1,753.9	14,323,491.50	2,494,722.70	39.404387	-107.975929
- plan hits target center											
- Circle (radius 50.0)											

Formations					
Measured Depth (usft)	Vertical Depth (usft)	Name	Lithology	Dip (°)	Dip Direction (°)
7,118.6	6,914.0	OHIO_CREEK.MBL (SSTVD)		0.00	
7,472.5	7,257.0	WILLIAMS_FORK.MBL (SSTVD)		0.00	
8,171.2	7,947.0	TOP_GAS.MBL (SSTVD)		0.00	
9,477.2	9,253.0	CAMEO.MBL (SSTVD)		0.00	
10,002.2	9,778.0	ROLLINS.MBL (SSTVD)		0.00	
10,152.2	9,928.0	TD.MBL (SSTVD)		0.00	

Plan Annotations				
Measured Depth (usft)	Vertical Depth (usft)	Local Coordinates		Comment
		+N/-S (usft)	+E/-W (usft)	
150.0	150.0	0.0	0.0	Start Build 3.00
250.0	250.0	-1.7	-2.0	Start DLS 3.00 TFO 29.15
635.4	630.4	-21.8	-55.4	Start 6960.6 hold at 635.4 MD
7,596.0	7,376.7	-512.6	-1,697.5	Start Drop -3.00
8,071.2	7,847.0	-529.5	-1,753.9	Start 2081.0 hold at 8071.2 MD
10,152.2	9,928.0	-529.5	-1,753.9	TD at 10152.2