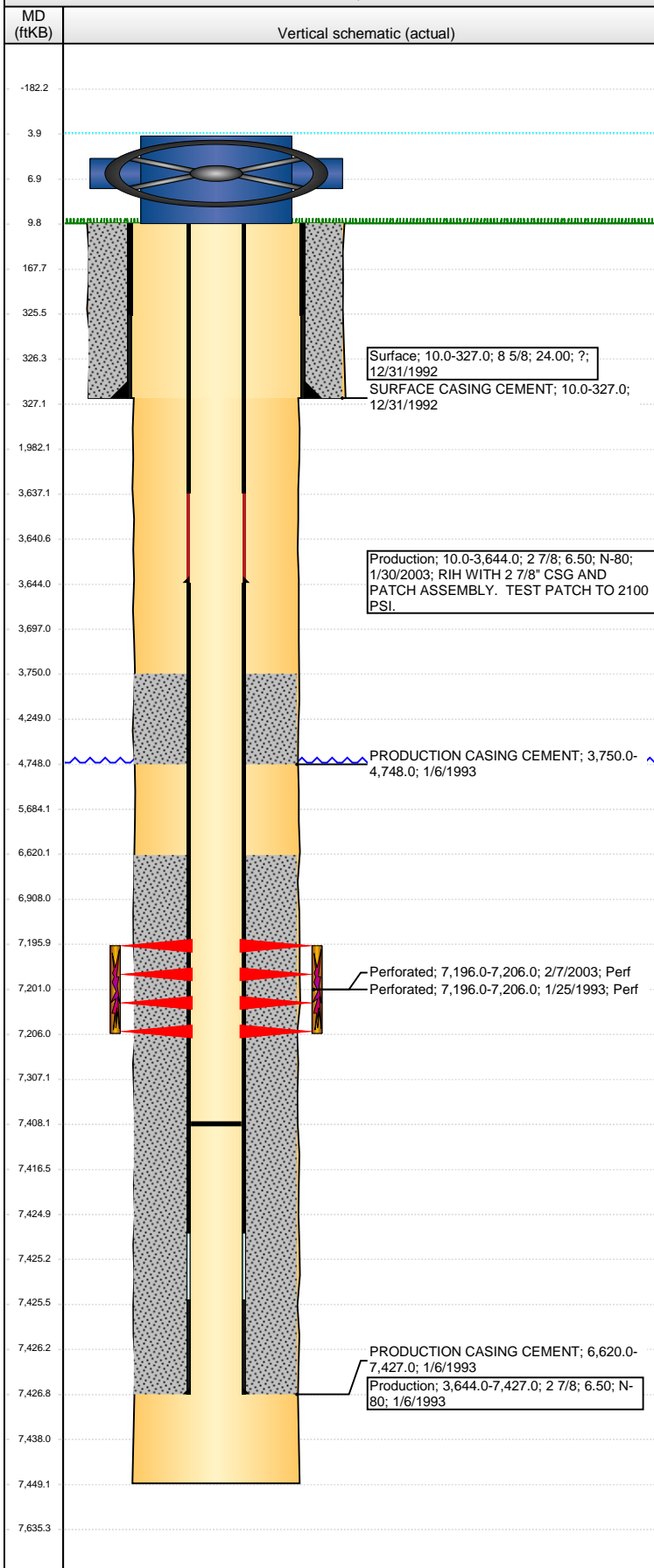


**Well Name: DINNER K 13-2**

VERTICAL - ORIGINAL HOLE, 11/18/2015 2:01:56 PM



## Well Header

API	Business Unit	District	Well Config
05-123-16641	DJ BASIN	15	VERTICAL
Original KB Elevation (ft)	KB - GL / MSL (ftKB)	Spud Date	P & A Date
4,743.00	10.00	12/31/1992	

## Comment

WELL DATA SKETCHY AND SPARSE. CSG PATCH AT 3640'.

## Directions To Well

## Congressional Location

Quarter 1	Quarter 2	Quarter 3	Quarter 4	Section	Township	Twntshp N...	Range	Rng E/W Dir
		NW	NE	13		4 N	66	W

## Bottom Hole Location

North-South Distance (ft)	From N or S Line	East-West Distance (ft)	From E or W Line

## Plug Back Total Depths

Date	Depth (ftKB)	Method	Com
1/25/1993	7,368.0	CASED HOLE LOG	DEPTH LOGGER ON CBL
1/28/2003	7,408.0	TAG	CLEANOUT. SUSPECT HOLE IN CASING.

## Wellbore Sections

Section Des	Size (in)	Act Top, MD (ftKB)	Act Btm, MD (ftKB)
SURFACE	12 1/4	10.0	327.0
PRODUCTION	7 7/8	327.0	7,449.0

## Zone Statuses

Zone Name	Status Date	Status	Fluid Type	Job	Prod Method
CODELL	2/12/1993	PR		DRILLING/CO...	
CODELL	2/18/2003	PR		RE-FRAC. 1/27...	

## Casing Strings

### Surface, 327.0ftKB

Casing Description	Run Date	OD (in)	Wt/Len (l...	Grade	Top, MD (ft...	MD (ftKB)
Surface	12/31/1992	8 5/8	24.00	?	10.0	327.0

### Production, 3,644.0ftKB

Casing Description	Run Date	OD (in)	Wt/Len (l...	Grade	Top, MD (ft...	MD (ftKB)
Production	1/30/2003	2 7/8	6.50	N-80	10.0	3,644.0

### Production, 7,427.0ftKB

Casing Description	Run Date	OD (in)	Wt/Len (l...	Grade	Top, MD (ft...	MD (ftKB)
Production	1/6/1993	2 7/8	6.50	N-80	10.0	7,427.0

## Cement

Description	Top Depth (ftKB)	Bottom Depth (ftKB)
SURFACE CASING CEMENT	10.0	327.0
PRODUCTION CASING CEMENT	3,750.0	4,748.0
PRODUCTION CASING CEMENT	6,620.0	7,427.0

## Tubing Strings

Tubing Description	Run Date	String...	ID (in)	Wt (lb/ft)	Grade	Len (ft)	Set De...

## Perforation Data

Zone	Bnch/St g	Entered Shot Total	Top (ftKB)	Btm (ftKB)	Date
CODELL, ORIGINAL HOLE		20	7,196.00	7,206.00	2/7/2003
CODELL, ORIGINAL HOLE		40	7,196.00	7,206.00	1/25/1993

## Stimulations & Treatments

Date	Zone	Primary Job Type
1/27/1993	CODELL, ORIGINAL HOLE	DRILLING/COMPLETION - ORIGINAL
Technical Result	Tech Result Details	Tech Result Note

## Comment

Date	Zone	Primary Job Type
2/10/2003	CODELL, ORIGINAL HOLE	RE-FRAC
Technical Result	Tech Result Details	Tech Result Note

## Comment

Date	Zone	Primary Job Type
Technical Result	Tech Result Details	Tech Result Note

## Other In Hole

Run Date	Des	OD (in)	Top (ftKB)	Btm (ftKB)

## Logs

Date	Type	Top, MD (ftKB)	Btm, MD (ftKB)
1/5/1993	COMPENSATED DENSITY	4,100.0	7,446.0

**Well Name: DINNER K 13-2**

VERTICAL - ORIGINAL HOLE, 11/18/2015 2:01:58 PM

## Logs

