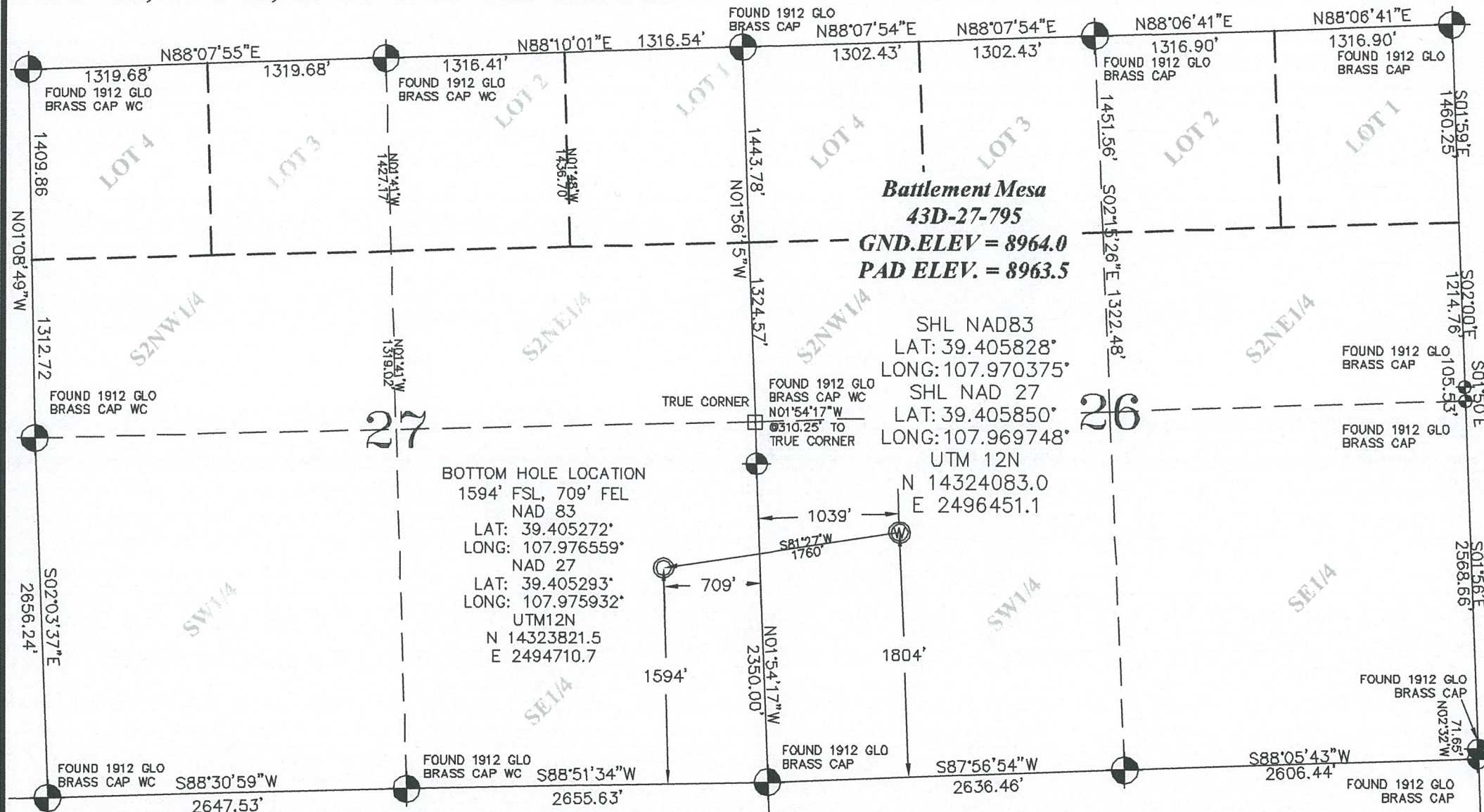


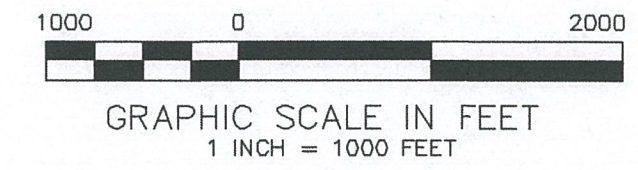
SEC. 26, T. 7 S., R. 95 W. OF THE 6TH P.M.

PLAT 1  
 BM 26K-795  
 PAD  
 LOCATION



BOTTOM HOLE LOCATION  
 1594' FSL, 709' FEL  
 NAD 83  
 LAT: 39.405272°  
 LONG: 107.976559°  
 NAD 27  
 LAT: 39.405293°  
 LONG: 107.975932°  
 UTM12N  
 N 14323821.5  
 E 2494710.7

SHL NAD83  
 LAT: 39.405828°  
 LONG: 107.970375°  
 SHL NAD 27  
 LAT: 39.405850°  
 LONG: 107.969748°  
 UTM 12N  
 N 14324083.0  
 E 2496451.1

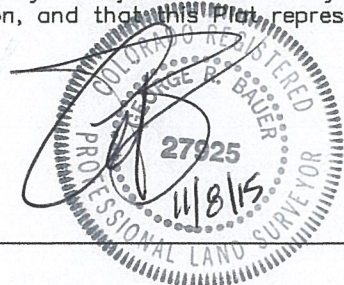


- LEGEND--**
- FIELD SURVEYED SECTION CORNER LOCATIONS
  - FIELD SURVEYED SECTION CORNER LOCATIONS
  - FIELD SURVEYED WELL LOCATION
  - CALCULATED BOTTOM HOLE LOCATION

**THIS WELL LOCATION PLAT WAS PREPARED FOR CAERUS PICEANCE LLC TO LOCATE THE BATTLEMENT MESA #43D-27-795 WELL, 1804 FEET FROM THE SOUTH LINE AND 1039 FEET FROM THE WEST LINE IN THE NW1/4SW1/4 OF SECTION 26, T. 7 S., R. 95 W. OF THE 6TH P.M. GARFIELD COUNTY, COLORADO.**

**SURVEYOR'S CERTIFICATE**

I, George R. Bauer: a Professional Land Surveyor in the State of Colorado do hereby certify that this Survey was made under my direct supervision, and that this Plat represents said Survey.



**REFERENCE NOTES**

- 1) T. 7 S., R. 95 W., 6TH P.M. GLO PLAT.
- 2) U.S.G.S. QUAD: PARACHUTE, CO
- 3) ELEVATIONS BASED ON N.A.V.D. 1988 LIDAR BASED CONTROL PT CP MON B
- 4) LATITUDES AND LONGITUDES ARE BASED ON NAD 83, COLORADO CENTRAL ZONE.
- 5) GPS OPERATOR Robert Wood, OBSERVED A PDOP OF 1.9.
- 6) ALL GPS OBSERVATIONS ARE IN COMPLIANCE WITH COGCC RULE NO. 215.
- 7) SURFACE AND BOTTOM HOLE LOCATIONS ARE MEASURED 90° FROM SECTION LINES.



**Battlement Mesa 26-K-795**  
 NWSW, SECTION 26, T. 7S., R. 95 W.

WELL LOCATION PLAT	
<b>CONSTRUCTION SURVEYS, INC.</b> 0012 SUNRISE BLVD. SILT, CO 81652 (970)876-5753	
SURVEY BY: REW 10/13/15	PDOP: 1.9
DRAWN BY: REW 11/06/15	
REVISED:	DWG: CAERUS\BM26K-795