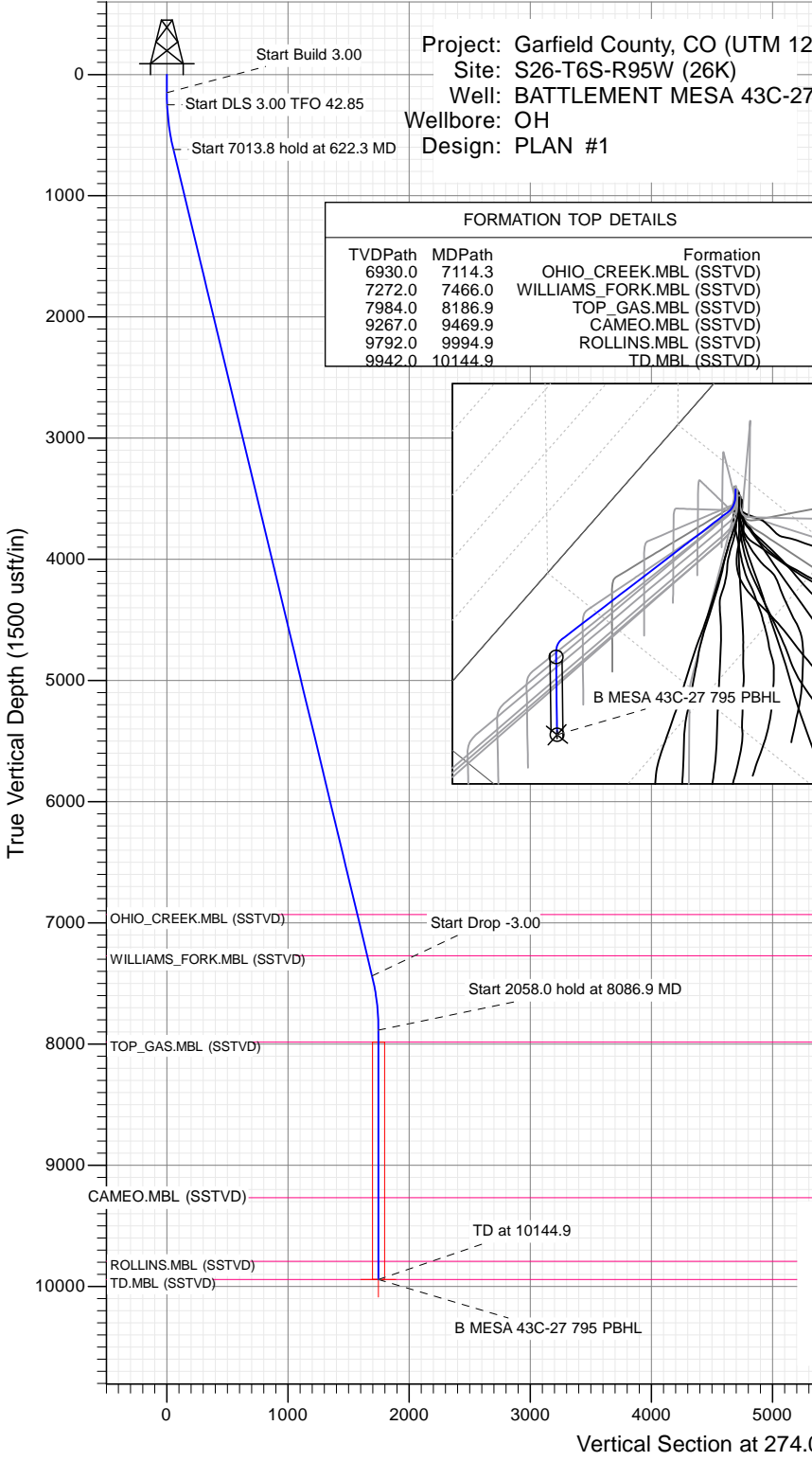




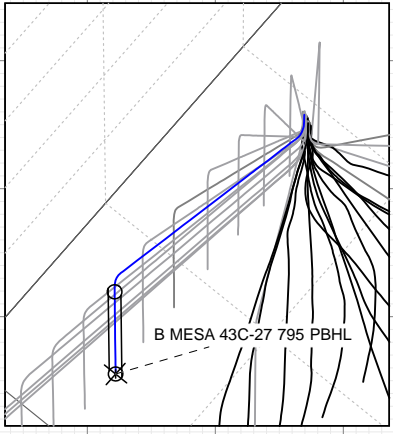
SECTION DETAILS

Sec	MD	Inc	Azi	TVD	+N/-S	+E/-W	Dleg	TFace	VSec	Target
1	0.0	0.00	0.00	0.0	0.0	0.0	0.00	0.00	0.0	
2	150.0	0.00	0.00	150.0	0.0	0.0	0.00	0.00	0.0	
3	250.0	3.00	240.00	250.0	-1.3	-2.3	3.00	240.00	2.2	
4	622.3	13.52	274.29	618.1	-2.9	-54.3	3.00	42.85	53.9	
5	7636.2	13.52	274.29	7437.4	119.8	-1689.7	0.00	0.00	1694.0	
6	8086.9	0.00	0.00	7884.0	123.8	-1742.5	3.00	180.00	1746.9	
7	10144.9	0.00	0.00	9942.0	123.8	-1742.5	0.00	0.00	1746.9	B MESA 43C-27 795 PBHL



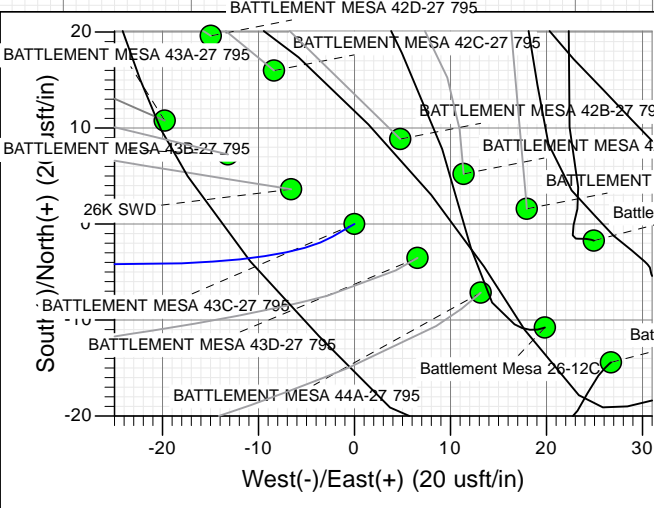
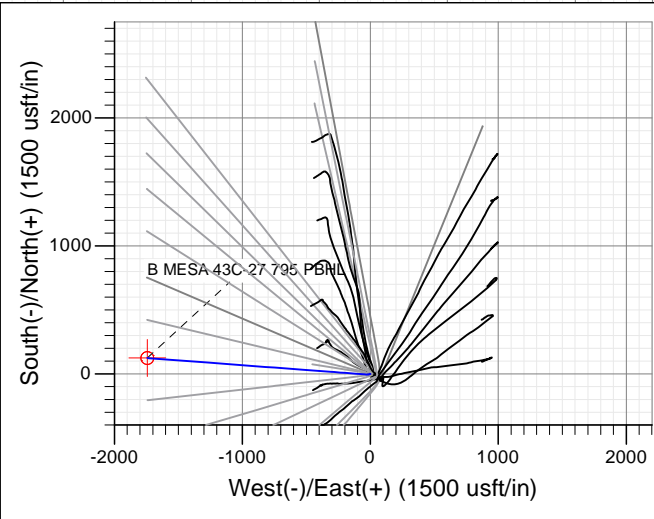
FORMATION TOP DETAILS

TVDPATH	MDPATH	FORMATION
6930.0	7114.3	OHIO_CREEK.MBL (SSTVD)
7272.0	7466.0	WILLIAMS_FORK.MBL (SSTVD)
7984.0	8186.9	TOP_GAS.MBL (SSTVD)
9267.0	9469.9	CAMEO.MBL (SSTVD)
9792.0	9994.9	ROLLINS.MBL (SSTVD)
9942.0	10144.9	TD.MBL (SSTVD)



PLAN #1
BATTLEMENT MESA 43C-27 795
15XXX; LR
30 KB @ 8964.0usft
Ground Level @ 8964.0
NAD 1927 - Western US
Well BATTLEMENT MESA 43C-27 795, True North

Type	Target	Azimuth	Origin Type	N/S	E/W	From TVD
TD	No Target (Freehand)	274.06	Slot	0.0	0.0	0.0
Name		TVD	+N/-S	+E/-W	Latitude	Longitude
B MESA 43C-27 795 PBHL		9942.0	123.8	-1742.5	39.406199	-107.975935



Azimuths to True North
 Magnetic North: 9.47°
 Magnetic Field
 Strength: 51904.6snT
 Dip Angle: 65.63°
 Date: 11/6/2015
 Model: HDGM

CASING DETAILS

No casing data is available



WELL DETAILS: BATTLEMENT MESA 43C-27 795

+N/-S	+E/-W	Northing	Ground Level:	8964.0	Latitude	Longitude
0.0	0.0	14324086.30	Easting	2496444.40	39.405860	-107.969772

Planning Report

Database:	USA EDM 5000 Multi Users DB	Local Co-ordinate Reference:	Well BATTLEMENT MESA 43C-27 795
Company:	Caerus Oil & Gas	TVD Reference:	30' KB @ 8994.0usft
Project:	Garfield County, CO (UTM 12N)	MD Reference:	30' KB @ 8994.0usft
Site:	S26-T6S-R95W (26K)	North Reference:	True
Well:	BATTLEMENT MESA 43C-27 795	Survey Calculation Method:	Minimum Curvature
Wellbore:	OH		
Design:	PLAN #1		

Project	Garfield County, CO (UTM 12N)		
Map System:	Universal Transverse Mercator (US Survey Feet)	System Datum:	Mean Sea Level
Geo Datum:	NAD 1927 - Western US		
Map Zone:	Zone 12N (114 W to 108 W)		

Site	S26-T6S-R95W (26K)				
Site Position:		Northing:	14,324,088.50 usft	Latitude:	39.405864
From:	Map	Easting:	2,496,462.30 usft	Longitude:	-107.969708
Position Uncertainty:	0.0 usft	Slot Radius:	13-3/16"	Grid Convergence:	1.92 °

Well	BATTLEMENT MESA 43C-27 795					
Well Position	+N/-S	0.0 usft	Northing:	14,324,086.30 usft	Latitude:	39.405860
	+E/-W	0.0 usft	Easting:	2,496,444.40 usft	Longitude:	-107.969772
Position Uncertainty		0.0 usft	Wellhead Elevation:	0.0 usft	Ground Level:	8,964.0 usft

Wellbore	OH				
Magnetics	Model Name	Sample Date	Declination	Dip Angle	Field Strength
			(°)	(°)	(nT)
	HDGM	11/6/2015	9.47	65.63	51,905

Design	PLAN #1			
Audit Notes:				
Version:	Phase:	PLAN	Tie On Depth:	0.0
Vertical Section:	Depth From (TVD)	+N/-S	+E/-W	Direction
	(usft)	(usft)	(usft)	(°)
	0.0	0.0	0.0	274.06

Plan Sections										
Measured Depth (usft)	Inclination (°)	Azimuth (°)	Vertical Depth (usft)	+N/-S (usft)	+E/-W (usft)	Dogleg Rate (°/100usft)	Build Rate (°/100usft)	Turn Rate (°/100usft)	TFO (°)	Target
0.0	0.00	0.00	0.0	0.0	0.0	0.00	0.00	0.00	0.00	
150.0	0.00	0.00	150.0	0.0	0.0	0.00	0.00	0.00	0.00	
250.0	3.00	240.00	250.0	-1.3	-2.3	3.00	3.00	0.00	240.00	
622.3	13.52	274.29	618.1	-2.9	-54.3	3.00	2.83	9.21	42.85	
7,636.2	13.52	274.29	7,437.4	119.8	-1,689.7	0.00	0.00	0.00	0.00	
8,086.9	0.00	0.00	7,884.0	123.8	-1,742.5	3.00	-3.00	0.00	180.00	
10,144.9	0.00	0.00	9,942.0	123.8	-1,742.5	0.00	0.00	0.00	0.00	B MESA 43C-27 795

Planning Report

Database:	USA EDM 5000 Multi Users DB	Local Co-ordinate Reference:	Well BATTLEMENT MESA 43C-27 795
Company:	Caerus Oil & Gas	TVD Reference:	30' KB @ 8994.0usft
Project:	Garfield County, CO (UTM 12N)	MD Reference:	30' KB @ 8994.0usft
Site:	S26-T6S-R95W (26K)	North Reference:	True
Well:	BATTLEMENT MESA 43C-27 795	Survey Calculation Method:	Minimum Curvature
Wellbore:	OH		
Design:	PLAN #1		

Planned Survey									
Measured Depth (usft)	Inclination (°)	Azimuth (°)	Vertical Depth (usft)	+N/-S (usft)	+E/-W (usft)	Vertical Section (usft)	Dogleg Rate (°/100usft)	Build Rate (°/100u)	Comments / Formations
0.0	0.00	0.00	0.0	0.0	0.0	0.0	0.00	0.00	
100.0	0.00	0.00	100.0	0.0	0.0	0.0	0.00	0.00	
150.0	0.00	0.00	150.0	0.0	0.0	0.0	0.00	0.00	Start Build 3.00
200.0	1.50	240.00	200.0	-0.3	-0.6	0.5	3.00	3.00	
250.0	3.00	240.00	250.0	-1.3	-2.3	2.2	3.00	3.00	Start DLS 3.00 TFO 42.85
300.0	4.22	253.98	299.9	-2.5	-5.2	5.0	3.00	2.45	
400.0	7.00	265.95	399.4	-3.9	-14.8	14.5	3.00	2.78	
500.0	9.91	271.05	498.3	-4.2	-29.5	29.1	3.00	2.91	
600.0	12.86	273.83	596.3	-3.3	-49.2	48.8	3.00	2.95	
622.3	13.52	274.29	618.1	-2.9	-54.3	53.9	3.00	2.96	Start 7013.8 hold at 622.3 MD
700.0	13.52	274.29	693.6	-1.6	-72.4	72.1	0.00	0.00	
800.0	13.52	274.29	790.8	0.2	-95.7	95.5	0.00	0.00	
900.0	13.52	274.29	888.0	1.9	-119.0	118.9	0.00	0.00	
1,000.0	13.52	274.29	985.2	3.7	-142.3	142.2	0.00	0.00	
1,100.0	13.52	274.29	1,082.5	5.4	-165.7	165.6	0.00	0.00	
1,200.0	13.52	274.29	1,179.7	7.2	-189.0	189.0	0.00	0.00	
1,300.0	13.52	274.29	1,276.9	8.9	-212.3	212.4	0.00	0.00	
1,400.0	13.52	274.29	1,374.1	10.7	-235.6	235.8	0.00	0.00	
1,500.0	13.52	274.29	1,471.4	12.4	-258.9	259.2	0.00	0.00	
1,600.0	13.52	274.29	1,568.6	14.2	-282.2	282.5	0.00	0.00	
1,700.0	13.52	274.29	1,665.8	15.9	-305.6	305.9	0.00	0.00	
1,800.0	13.52	274.29	1,763.1	17.7	-328.9	329.3	0.00	0.00	
1,900.0	13.52	274.29	1,860.3	19.4	-352.2	352.7	0.00	0.00	
2,000.0	13.52	274.29	1,957.5	21.2	-375.5	376.1	0.00	0.00	
2,100.0	13.52	274.29	2,054.7	22.9	-398.8	399.5	0.00	0.00	
2,200.0	13.52	274.29	2,152.0	24.7	-422.2	422.8	0.00	0.00	
2,300.0	13.52	274.29	2,249.2	26.4	-445.5	446.2	0.00	0.00	
2,400.0	13.52	274.29	2,346.4	28.2	-468.8	469.6	0.00	0.00	
2,500.0	13.52	274.29	2,443.7	29.9	-492.1	493.0	0.00	0.00	
2,600.0	13.52	274.29	2,540.9	31.7	-515.4	516.4	0.00	0.00	
2,700.0	13.52	274.29	2,638.1	33.4	-538.7	539.8	0.00	0.00	
2,800.0	13.52	274.29	2,735.3	35.2	-562.1	563.1	0.00	0.00	
2,900.0	13.52	274.29	2,832.6	36.9	-585.4	586.5	0.00	0.00	
3,000.0	13.52	274.29	2,929.8	38.7	-608.7	609.9	0.00	0.00	
3,100.0	13.52	274.29	3,027.0	40.4	-632.0	633.3	0.00	0.00	
3,200.0	13.52	274.29	3,124.2	42.2	-655.3	656.7	0.00	0.00	
3,300.0	13.52	274.29	3,221.5	43.9	-678.6	680.1	0.00	0.00	
3,400.0	13.52	274.29	3,318.7	45.7	-702.0	703.4	0.00	0.00	
3,500.0	13.52	274.29	3,415.9	47.4	-725.3	726.8	0.00	0.00	
3,600.0	13.52	274.29	3,513.2	49.2	-748.6	750.2	0.00	0.00	
3,700.0	13.52	274.29	3,610.4	50.9	-771.9	773.6	0.00	0.00	
3,800.0	13.52	274.29	3,707.6	52.7	-795.2	797.0	0.00	0.00	
3,900.0	13.52	274.29	3,804.8	54.4	-818.5	820.3	0.00	0.00	
4,000.0	13.52	274.29	3,902.1	56.2	-841.9	843.7	0.00	0.00	
4,100.0	13.52	274.29	3,999.3	57.9	-865.2	867.1	0.00	0.00	
4,200.0	13.52	274.29	4,096.5	59.7	-888.5	890.5	0.00	0.00	
4,300.0	13.52	274.29	4,193.7	61.4	-911.8	913.9	0.00	0.00	
4,400.0	13.52	274.29	4,291.0	63.2	-935.1	937.3	0.00	0.00	
4,500.0	13.52	274.29	4,388.2	64.9	-958.5	960.6	0.00	0.00	
4,600.0	13.52	274.29	4,485.4	66.7	-981.8	984.0	0.00	0.00	
4,700.0	13.52	274.29	4,582.7	68.4	-1,005.1	1,007.4	0.00	0.00	
4,800.0	13.52	274.29	4,679.9	70.2	-1,028.4	1,030.8	0.00	0.00	

Planning Report

Database:	USA EDM 5000 Multi Users DB	Local Co-ordinate Reference:	Well BATTLEMENT MESA 43C-27 795
Company:	Caerus Oil & Gas	TVD Reference:	30' KB @ 8994.0usft
Project:	Garfield County, CO (UTM 12N)	MD Reference:	30' KB @ 8994.0usft
Site:	S26-T6S-R95W (26K)	North Reference:	True
Well:	BATTLEMENT MESA 43C-27 795	Survey Calculation Method:	Minimum Curvature
Wellbore:	OH		
Design:	PLAN #1		

Planned Survey									
Measured Depth (usft)	Inclination (°)	Azimuth (°)	Vertical Depth (usft)	+N/-S (usft)	+E/-W (usft)	Vertical Section (usft)	Dogleg Rate (°/100usft)	Build Rate (°/100u)	Comments / Formations
4,900.0	13.52	274.29	4,777.1	71.9	-1,051.7	1,054.2	0.00	0.00	
5,000.0	13.52	274.29	4,874.3	73.7	-1,075.0	1,077.6	0.00	0.00	
5,100.0	13.52	274.29	4,971.6	75.4	-1,098.4	1,100.9	0.00	0.00	
5,200.0	13.52	274.29	5,068.8	77.2	-1,121.7	1,124.3	0.00	0.00	
5,300.0	13.52	274.29	5,166.0	78.9	-1,145.0	1,147.7	0.00	0.00	
5,400.0	13.52	274.29	5,263.3	80.7	-1,168.3	1,171.1	0.00	0.00	
5,500.0	13.52	274.29	5,360.5	82.4	-1,191.6	1,194.5	0.00	0.00	
5,600.0	13.52	274.29	5,457.7	84.2	-1,214.9	1,217.9	0.00	0.00	
5,700.0	13.52	274.29	5,554.9	85.9	-1,238.3	1,241.2	0.00	0.00	
5,800.0	13.52	274.29	5,652.2	87.7	-1,261.6	1,264.6	0.00	0.00	
5,900.0	13.52	274.29	5,749.4	89.4	-1,284.9	1,288.0	0.00	0.00	
6,000.0	13.52	274.29	5,846.6	91.2	-1,308.2	1,311.4	0.00	0.00	
6,100.0	13.52	274.29	5,943.8	92.9	-1,331.5	1,334.8	0.00	0.00	
6,200.0	13.52	274.29	6,041.1	94.7	-1,354.9	1,358.2	0.00	0.00	
6,300.0	13.52	274.29	6,138.3	96.4	-1,378.2	1,381.5	0.00	0.00	
6,400.0	13.52	274.29	6,235.5	98.2	-1,401.5	1,404.9	0.00	0.00	
6,500.0	13.52	274.29	6,332.8	99.9	-1,424.8	1,428.3	0.00	0.00	
6,600.0	13.52	274.29	6,430.0	101.7	-1,448.1	1,451.7	0.00	0.00	
6,700.0	13.52	274.29	6,527.2	103.4	-1,471.4	1,475.1	0.00	0.00	
6,800.0	13.52	274.29	6,624.4	105.2	-1,494.8	1,498.5	0.00	0.00	
6,900.0	13.52	274.29	6,721.7	106.9	-1,518.1	1,521.8	0.00	0.00	
7,000.0	13.52	274.29	6,818.9	108.7	-1,541.4	1,545.2	0.00	0.00	
7,100.0	13.52	274.29	6,916.1	110.5	-1,564.7	1,568.6	0.00	0.00	
7,114.3	13.52	274.29	6,930.0	110.7	-1,568.0	1,571.9	0.00	0.00	OHIO_CREEK.MBL (SSTVD)
7,200.0	13.52	274.29	7,013.4	112.2	-1,588.0	1,592.0	0.00	0.00	
7,300.0	13.52	274.29	7,110.6	114.0	-1,611.3	1,615.4	0.00	0.00	
7,400.0	13.52	274.29	7,207.8	115.7	-1,634.7	1,638.8	0.00	0.00	
7,466.0	13.52	274.29	7,272.0	116.9	-1,650.1	1,654.2	0.00	0.00	WILLIAMS_FORK.MBL (SSTVD)
7,500.0	13.52	274.29	7,305.0	117.5	-1,658.0	1,662.1	0.00	0.00	
7,600.0	13.52	274.29	7,402.3	119.2	-1,681.3	1,685.5	0.00	0.00	
7,636.2	13.52	274.29	7,437.4	119.8	-1,689.7	1,694.0	0.00	0.00	Start Drop -3.00
7,700.0	11.61	274.29	7,499.7	120.9	-1,703.6	1,707.9	3.00	-3.00	
7,800.0	8.61	274.29	7,598.2	122.2	-1,721.1	1,725.4	3.00	-3.00	
7,900.0	5.61	274.29	7,697.4	123.1	-1,733.4	1,737.8	3.00	-3.00	
8,000.0	2.61	274.29	7,797.1	123.6	-1,740.6	1,744.9	3.00	-3.00	
8,086.9	0.00	0.00	7,884.0	123.8	-1,742.5	1,746.9	3.00	-3.00	Start 2058.0 hold at 8086.9 MD
8,100.0	0.00	0.00	7,897.1	123.8	-1,742.5	1,746.9	0.00	0.00	
8,186.9	0.00	0.00	7,984.0	123.8	-1,742.5	1,746.9	0.00	0.00	TOP_GAS.MBL (SSTVD)
8,200.0	0.00	0.00	7,997.1	123.8	-1,742.5	1,746.9	0.00	0.00	
8,300.0	0.00	0.00	8,097.1	123.8	-1,742.5	1,746.9	0.00	0.00	
8,400.0	0.00	0.00	8,197.1	123.8	-1,742.5	1,746.9	0.00	0.00	
8,500.0	0.00	0.00	8,297.1	123.8	-1,742.5	1,746.9	0.00	0.00	
8,600.0	0.00	0.00	8,397.1	123.8	-1,742.5	1,746.9	0.00	0.00	
8,700.0	0.00	0.00	8,497.1	123.8	-1,742.5	1,746.9	0.00	0.00	
8,800.0	0.00	0.00	8,597.1	123.8	-1,742.5	1,746.9	0.00	0.00	
8,900.0	0.00	0.00	8,697.1	123.8	-1,742.5	1,746.9	0.00	0.00	
9,000.0	0.00	0.00	8,797.1	123.8	-1,742.5	1,746.9	0.00	0.00	
9,100.0	0.00	0.00	8,897.1	123.8	-1,742.5	1,746.9	0.00	0.00	
9,200.0	0.00	0.00	8,997.1	123.8	-1,742.5	1,746.9	0.00	0.00	
9,300.0	0.00	0.00	9,097.1	123.8	-1,742.5	1,746.9	0.00	0.00	
9,400.0	0.00	0.00	9,197.1	123.8	-1,742.5	1,746.9	0.00	0.00	
9,469.9	0.00	0.00	9,267.0	123.8	-1,742.5	1,746.9	0.00	0.00	CAMEO.MBL (SSTVD)

Planning Report

Database:	USA EDM 5000 Multi Users DB	Local Co-ordinate Reference:	Well BATTLEMENT MESA 43C-27 795
Company:	Caerus Oil & Gas	TVD Reference:	30' KB @ 8994.0usft
Project:	Garfield County, CO (UTM 12N)	MD Reference:	30' KB @ 8994.0usft
Site:	S26-T6S-R95W (26K)	North Reference:	True
Well:	BATTLEMENT MESA 43C-27 795	Survey Calculation Method:	Minimum Curvature
Wellbore:	OH		
Design:	PLAN #1		

Planned Survey									
Measured Depth (usft)	Inclination (°)	Azimuth (°)	Vertical Depth (usft)	+N/-S (usft)	+E/-W (usft)	Vertical Section (usft)	Dogleg Rate (°/100usft)	Build Rate (°/100u)	Comments / Formations
9,500.0	0.00	0.00	9,297.1	123.8	-1,742.5	1,746.9	0.00	0.00	
9,600.0	0.00	0.00	9,397.1	123.8	-1,742.5	1,746.9	0.00	0.00	
9,700.0	0.00	0.00	9,497.1	123.8	-1,742.5	1,746.9	0.00	0.00	
9,800.0	0.00	0.00	9,597.1	123.8	-1,742.5	1,746.9	0.00	0.00	
9,900.0	0.00	0.00	9,697.1	123.8	-1,742.5	1,746.9	0.00	0.00	
9,994.9	0.00	0.00	9,792.0	123.8	-1,742.5	1,746.9	0.00	0.00	ROLLINS.MBL (SSTVD)
10,000.0	0.00	0.00	9,797.1	123.8	-1,742.5	1,746.9	0.00	0.00	
10,100.0	0.00	0.00	9,897.1	123.8	-1,742.5	1,746.9	0.00	0.00	
10,144.9	0.00	0.00	9,942.0	123.8	-1,742.5	1,746.9	0.00	0.00	TD at 10144.9 - TD.MBL (SSTVD)

Targets											
Target Name	- hit/miss target	- Shape	Dip Angle (°)	Dip Dir. (°)	TVD (usft)	+N/-S (usft)	+E/-W (usft)	Northing (usft)	Easting (usft)	Latitude	Longitude
B MESA 43C-27 795 PB			0.00	0.00	9,942.0	123.8	-1,742.5	14,324,151.50	2,494,698.70	39.406199	-107.975935
- plan hits target center											
- Circle (radius 50.0)											

Formations					
Measured Depth (usft)	Vertical Depth (usft)	Name	Lithology	Dip (°)	Dip Direction (°)
7,114.3	6,930.0	OHIO_CREEK.MBL (SSTVD)		0.00	
7,466.0	7,272.0	WILLIAMS_FORK.MBL (SSTVD)		0.00	
8,186.9	7,984.0	TOP_GAS.MBL (SSTVD)		0.00	
9,469.9	9,267.0	CAMEO.MBL (SSTVD)		0.00	
9,994.9	9,792.0	ROLLINS.MBL (SSTVD)		0.00	
10,144.9	9,942.0	TD.MBL (SSTVD)		0.00	

Plan Annotations					
Measured Depth (usft)	Vertical Depth (usft)	Local Coordinates		Comment	
		+N/-S (usft)	+E/-W (usft)		
150.0	150.0	0.0	0.0	Start Build 3.00	
250.0	250.0	-1.3	-2.3	Start DLS 3.00 TFO 42.85	
622.3	618.1	-2.9	-54.3	Start 7013.8 hold at 622.3 MD	
7,636.2	7,437.4	119.8	-1,689.7	Start Drop -3.00	
8,086.9	7,884.0	123.8	-1,742.5	Start 2058.0 hold at 8086.9 MD	
10,144.9	9,942.0	123.8	-1,742.5	TD at 10144.9	