



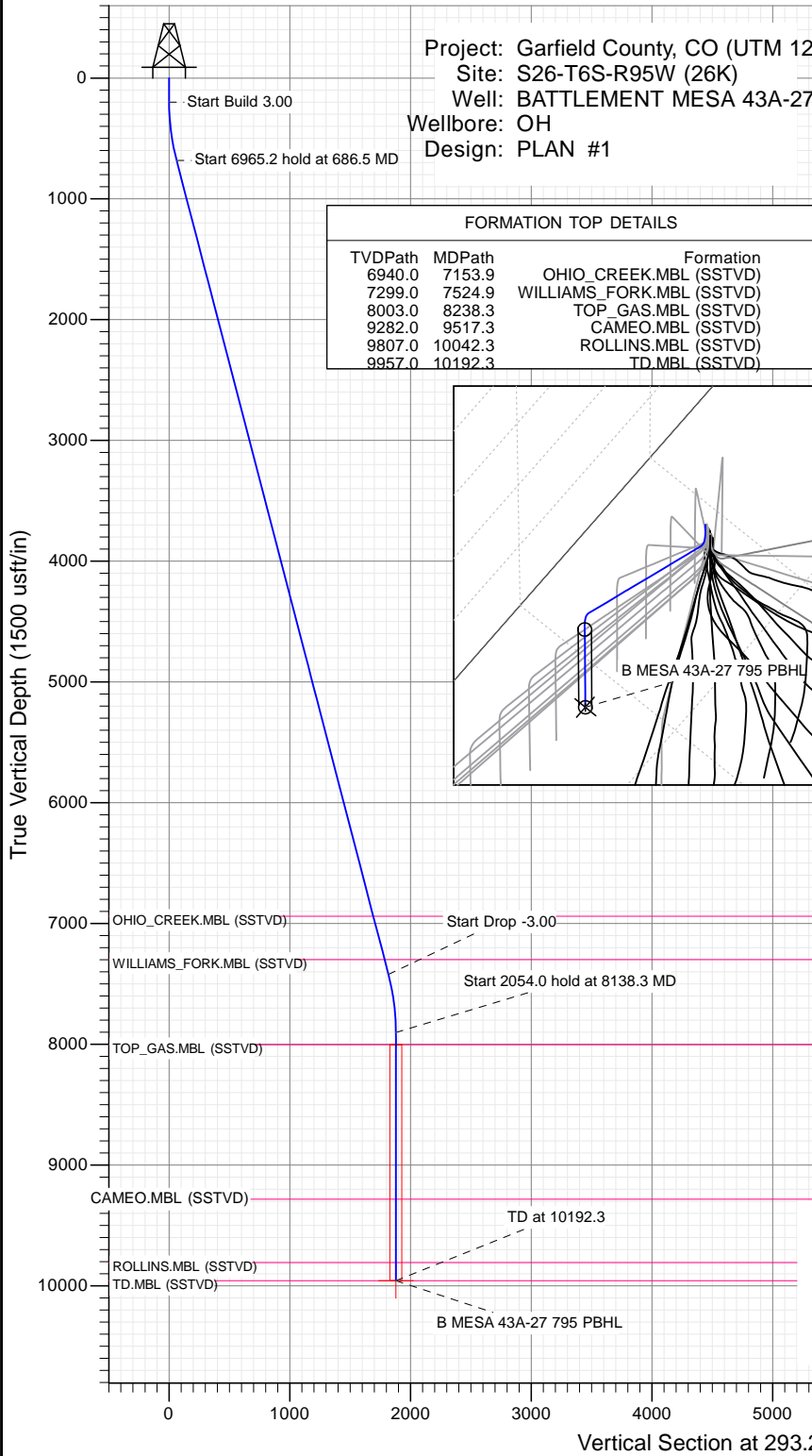
SECTION DETAILS

Sec	MD	Inc	Azi	TVD	+N/-S	+E/-W	Dleg	TFace	Vsect	Target
1	0.0	0.00	0.00	0.0	0.0	0.0	0.00	0.00	0.0	
2	200.0	0.00	0.00	200.0	0.0	0.0	0.00	0.00	0.0	
3	686.5	14.60	293.27	681.3	24.3	-56.6	3.00	293.27	61.6	
4	7651.7	14.60	293.27	7421.7	717.6	-1669.0	0.00	0.00	1816.8	
5	8138.3	0.00	0.00	7903.0	742.0	-1725.7	3.00	180.00	1878.4	
6	10192.3	0.00	0.00	9957.0	742.0	-1725.7	0.00	0.00	1878.4	B MESA 43A-27 795 PBHL

Project: Garfield County, CO (UTM 12)
 Site: S26-T6S-R95W (26K)
 Well: BATTLEMENT MESA 43A-27
 Wellbore: OH
 Design: PLAN #1

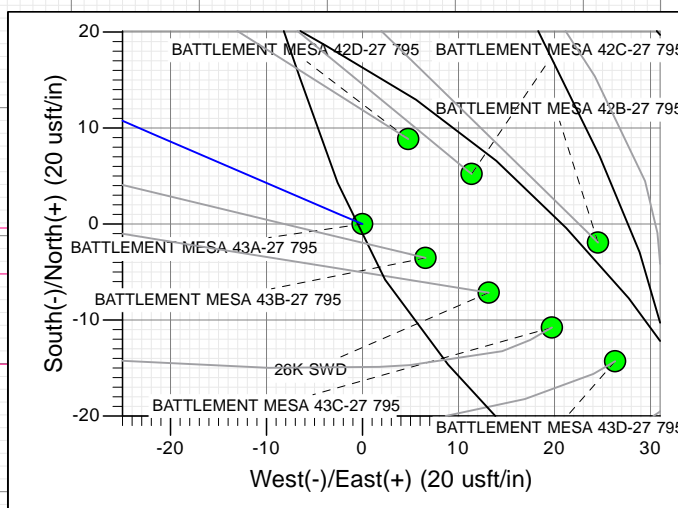
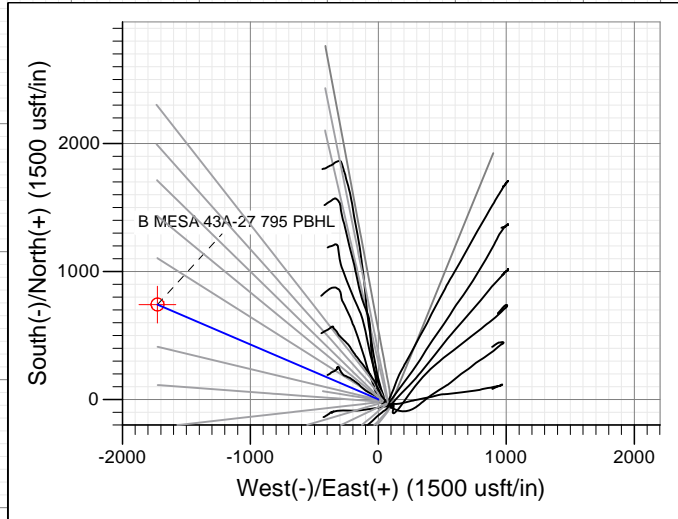
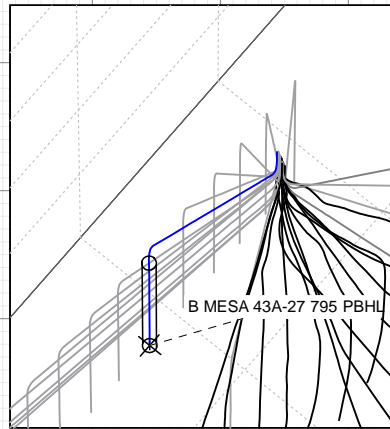
PLAN #1
 BATTLEMENT MESA 43A-27 795
 15XXX; LR
 30 KB @ 8994.0usft
 Ground Level @ 8964.0
 NAD 1927 - Western US
 Well BATTLEMENT MESA 43A-27 795, True North

Type	Target	TD	No Target (Freehand)	Azimuth	Origin	Type	N/S	E/W	From	
				293.27	Slot		0.0	0.0	TVD	
Name				TVD			+N/-S	+E/-W	Latitude	Longitude
B MESA 43A-27 795 PBHL				9957.0			742.0	-1725.7	39.407925	-107.975946



FORMATION TOP DETAILS

TVDPPath	MDPath	Formation
6940.0	7153.9	OHIO_CREEK.MBL (SSTVD)
7299.0	7524.9	WILLIAMS_FORK.MBL (SSTVD)
8003.0	8238.3	TOP_GAS.MBL (SSTVD)
9282.0	9517.3	CAMEO.MBL (SSTVD)
9807.0	10042.3	ROLLINS.MBL (SSTVD)
9957.0	10192.3	TD.MBL (SSTVD)



T M
 Azimuths to True North
 Magnetic North: 9.47°
 Magnetic Field
 Strength: 51904.6snT
 Dip Angle: 65.63°
 Date: 11/6/2015
 Model: HDGM

CASING DETAILS

No casing data is available



WELL DETAILS: BATTLEMENT MESA 43A-27 795

+N/-S	+E/-W	Northing	Ground Level:	8964.0
0.0	0.0	14324096.40	Easting	2496424.30
			Latitude	39.405889
			Longitude	-107.969841

Planning Report

Database:	USA EDM 5000 Multi Users DB	Local Co-ordinate Reference:	Well BATTLEMENT MESA 43A-27 795
Company:	Caerus Oil & Gas	TVD Reference:	30' KB @ 8994.0usft
Project:	Garfield County, CO (UTM 12N)	MD Reference:	30' KB @ 8994.0usft
Site:	S26-T6S-R95W (26K)	North Reference:	True
Well:	BATTLEMENT MESA 43A-27 795	Survey Calculation Method:	Minimum Curvature
Wellbore:	OH		
Design:	PLAN #1		

Project	Garfield County, CO (UTM 12N)		
Map System:	Universal Transverse Mercator (US Survey Feet)	System Datum:	Mean Sea Level
Geo Datum:	NAD 1927 - Western US		
Map Zone:	Zone 12N (114 W to 108 W)		

Site	S26-T6S-R95W (26K)				
Site Position:		Northing:	14,324,088.50 usft	Latitude:	39.405864
From:	Map	Easting:	2,496,462.30 usft	Longitude:	-107.969708
Position Uncertainty:	0.0 usft	Slot Radius:	13-3/16"	Grid Convergence:	1.92 °

Well	BATTLEMENT MESA 43A-27 795					
Well Position	+N/-S	0.0 usft	Northing:	14,324,096.40 usft	Latitude:	39.405889
	+E/-W	0.0 usft	Easting:	2,496,424.30 usft	Longitude:	-107.969841
Position Uncertainty		0.0 usft	Wellhead Elevation:	0.0 usft	Ground Level:	8,964.0 usft

Wellbore	OH				
Magnetics	Model Name	Sample Date	Declination	Dip Angle	Field Strength
			(°)	(°)	(nT)
	HDGM	11/6/2015	9.47	65.63	51,905

Design	PLAN #1			
Audit Notes:				
Version:	Phase:	PLAN	Tie On Depth:	0.0
Vertical Section:	Depth From (TVD)	+N/-S	+E/-W	Direction
	(usft)	(usft)	(usft)	(°)
	0.0	0.0	0.0	293.27

Plan Sections										
Measured Depth (usft)	Inclination (°)	Azimuth (°)	Vertical Depth (usft)	+N/-S (usft)	+E/-W (usft)	Dogleg Rate (°/100usft)	Build Rate (°/100usft)	Turn Rate (°/100usft)	TFO (°)	Target
0.0	0.00	0.00	0.0	0.0	0.0	0.00	0.00	0.00	0.00	
200.0	0.00	0.00	200.0	0.0	0.0	0.00	0.00	0.00	0.00	
686.5	14.60	293.27	681.3	24.3	-56.6	3.00	3.00	0.00	293.27	
7,651.7	14.60	293.27	7,421.7	717.6	-1,669.0	0.00	0.00	0.00	0.00	
8,138.3	0.00	0.00	7,903.0	742.0	-1,725.7	3.00	-3.00	0.00	180.00	
10,192.3	0.00	0.00	9,957.0	742.0	-1,725.7	0.00	0.00	0.00	0.00	B MESA 43A-27 795 I

Planning Report

Database:	USA EDM 5000 Multi Users DB	Local Co-ordinate Reference:	Well BATTLEMENT MESA 43A-27 795
Company:	Caerus Oil & Gas	TVD Reference:	30' KB @ 8994.0usft
Project:	Garfield County, CO (UTM 12N)	MD Reference:	30' KB @ 8994.0usft
Site:	S26-T6S-R95W (26K)	North Reference:	True
Well:	BATTLEMENT MESA 43A-27 795	Survey Calculation Method:	Minimum Curvature
Wellbore:	OH		
Design:	PLAN #1		

Planned Survey									
Measured Depth (usft)	Inclination (°)	Azimuth (°)	Vertical Depth (usft)	+N/-S (usft)	+E/-W (usft)	Vertical Section (usft)	Dogleg Rate (°/100usft)	Build Rate (°/100u)	Comments / Formations
0.0	0.00	0.00	0.0	0.0	0.0	0.0	0.00	0.00	
100.0	0.00	0.00	100.0	0.0	0.0	0.0	0.00	0.00	
200.0	0.00	0.00	200.0	0.0	0.0	0.0	0.00	0.00	Start Build 3.00
300.0	3.00	293.27	300.0	1.0	-2.4	2.6	3.00	3.00	
400.0	6.00	293.27	399.6	4.1	-9.6	10.5	3.00	3.00	
500.0	9.00	293.27	498.8	9.3	-21.6	23.5	3.00	3.00	
600.0	12.00	293.27	597.1	16.5	-38.3	41.7	3.00	3.00	
686.5	14.60	293.27	681.3	24.3	-56.6	61.6	3.00	3.00	Start 6965.2 hold at 686.5 MD
700.0	14.60	293.27	694.3	25.7	-59.7	65.0	0.00	0.00	
800.0	14.60	293.27	791.1	35.6	-82.9	90.2	0.00	0.00	
900.0	14.60	293.27	887.9	45.6	-106.0	115.4	0.00	0.00	
1,000.0	14.60	293.27	984.6	55.5	-129.2	140.6	0.00	0.00	
1,100.0	14.60	293.27	1,081.4	65.5	-152.3	165.8	0.00	0.00	
1,200.0	14.60	293.27	1,178.2	75.5	-175.5	191.0	0.00	0.00	
1,300.0	14.60	293.27	1,275.0	85.4	-198.6	216.2	0.00	0.00	
1,400.0	14.60	293.27	1,371.7	95.4	-221.8	241.4	0.00	0.00	
1,500.0	14.60	293.27	1,468.5	105.3	-244.9	266.6	0.00	0.00	
1,600.0	14.60	293.27	1,565.3	115.3	-268.1	291.8	0.00	0.00	
1,700.0	14.60	293.27	1,662.1	125.2	-291.2	317.0	0.00	0.00	
1,800.0	14.60	293.27	1,758.8	135.2	-314.4	342.2	0.00	0.00	
1,900.0	14.60	293.27	1,855.6	145.1	-337.5	367.4	0.00	0.00	
2,000.0	14.60	293.27	1,952.4	155.1	-360.7	392.6	0.00	0.00	
2,100.0	14.60	293.27	2,049.1	165.0	-383.8	417.8	0.00	0.00	
2,200.0	14.60	293.27	2,145.9	175.0	-407.0	443.0	0.00	0.00	
2,300.0	14.60	293.27	2,242.7	184.9	-430.1	468.2	0.00	0.00	
2,400.0	14.60	293.27	2,339.5	194.9	-453.3	493.4	0.00	0.00	
2,500.0	14.60	293.27	2,436.2	204.9	-476.4	518.6	0.00	0.00	
2,600.0	14.60	293.27	2,533.0	214.8	-499.6	543.8	0.00	0.00	
2,700.0	14.60	293.27	2,629.8	224.8	-522.7	569.0	0.00	0.00	
2,800.0	14.60	293.27	2,726.6	234.7	-545.9	594.2	0.00	0.00	
2,900.0	14.60	293.27	2,823.3	244.7	-569.0	619.4	0.00	0.00	
3,000.0	14.60	293.27	2,920.1	254.6	-592.2	644.6	0.00	0.00	
3,100.0	14.60	293.27	3,016.9	264.6	-615.3	669.8	0.00	0.00	
3,200.0	14.60	293.27	3,113.6	274.5	-638.5	695.0	0.00	0.00	
3,300.0	14.60	293.27	3,210.4	284.5	-661.6	720.2	0.00	0.00	
3,400.0	14.60	293.27	3,307.2	294.4	-684.8	745.4	0.00	0.00	
3,500.0	14.60	293.27	3,404.0	304.4	-707.9	770.6	0.00	0.00	
3,600.0	14.60	293.27	3,500.7	314.3	-731.1	795.8	0.00	0.00	
3,700.0	14.60	293.27	3,597.5	324.3	-754.2	821.0	0.00	0.00	
3,800.0	14.60	293.27	3,694.3	334.2	-777.4	846.2	0.00	0.00	
3,900.0	14.60	293.27	3,791.1	344.2	-800.5	871.4	0.00	0.00	
4,000.0	14.60	293.27	3,887.8	354.2	-823.7	896.6	0.00	0.00	
4,100.0	14.60	293.27	3,984.6	364.1	-846.8	921.8	0.00	0.00	
4,200.0	14.60	293.27	4,081.4	374.1	-870.0	947.0	0.00	0.00	
4,300.0	14.60	293.27	4,178.2	384.0	-893.1	972.2	0.00	0.00	
4,400.0	14.60	293.27	4,274.9	394.0	-916.3	997.4	0.00	0.00	
4,500.0	14.60	293.27	4,371.7	403.9	-939.4	1,022.6	0.00	0.00	
4,600.0	14.60	293.27	4,468.5	413.9	-962.6	1,047.8	0.00	0.00	
4,700.0	14.60	293.27	4,565.2	423.8	-985.7	1,073.0	0.00	0.00	
4,800.0	14.60	293.27	4,662.0	433.8	-1,008.9	1,098.2	0.00	0.00	
4,900.0	14.60	293.27	4,758.8	443.7	-1,032.0	1,123.4	0.00	0.00	
5,000.0	14.60	293.27	4,855.6	453.7	-1,055.2	1,148.6	0.00	0.00	

Planning Report

Database:	USA EDM 5000 Multi Users DB	Local Co-ordinate Reference:	Well BATTLEMENT MESA 43A-27 795
Company:	Caerus Oil & Gas	TVD Reference:	30' KB @ 8994.0usft
Project:	Garfield County, CO (UTM 12N)	MD Reference:	30' KB @ 8994.0usft
Site:	S26-T6S-R95W (26K)	North Reference:	True
Well:	BATTLEMENT MESA 43A-27 795	Survey Calculation Method:	Minimum Curvature
Wellbore:	OH		
Design:	PLAN #1		

Planned Survey									
Measured Depth (usft)	Inclination (°)	Azimuth (°)	Vertical Depth (usft)	+N/-S (usft)	+E/-W (usft)	Vertical Section (usft)	Dogleg Rate (°/100usft)	Build Rate (°/100u)	Comments / Formations
5,100.0	14.60	293.27	4,952.3	463.6	-1,078.3	1,173.8	0.00	0.00	
5,200.0	14.60	293.27	5,049.1	473.6	-1,101.5	1,199.0	0.00	0.00	
5,300.0	14.60	293.27	5,145.9	483.6	-1,124.6	1,224.2	0.00	0.00	
5,400.0	14.60	293.27	5,242.7	493.5	-1,147.8	1,249.4	0.00	0.00	
5,500.0	14.60	293.27	5,339.4	503.5	-1,170.9	1,274.6	0.00	0.00	
5,600.0	14.60	293.27	5,436.2	513.4	-1,194.1	1,299.8	0.00	0.00	
5,700.0	14.60	293.27	5,533.0	523.4	-1,217.2	1,325.0	0.00	0.00	
5,800.0	14.60	293.27	5,629.7	533.3	-1,240.4	1,350.2	0.00	0.00	
5,900.0	14.60	293.27	5,726.5	543.3	-1,263.5	1,375.4	0.00	0.00	
6,000.0	14.60	293.27	5,823.3	553.2	-1,286.7	1,400.6	0.00	0.00	
6,100.0	14.60	293.27	5,920.1	563.2	-1,309.8	1,425.8	0.00	0.00	
6,200.0	14.60	293.27	6,016.8	573.1	-1,333.0	1,451.0	0.00	0.00	
6,300.0	14.60	293.27	6,113.6	583.1	-1,356.1	1,476.2	0.00	0.00	
6,400.0	14.60	293.27	6,210.4	593.0	-1,379.3	1,501.4	0.00	0.00	
6,500.0	14.60	293.27	6,307.2	603.0	-1,402.4	1,526.6	0.00	0.00	
6,600.0	14.60	293.27	6,403.9	612.9	-1,425.6	1,551.8	0.00	0.00	
6,700.0	14.60	293.27	6,500.7	622.9	-1,448.7	1,576.9	0.00	0.00	
6,800.0	14.60	293.27	6,597.5	632.9	-1,471.9	1,602.1	0.00	0.00	
6,900.0	14.60	293.27	6,694.3	642.8	-1,495.0	1,627.3	0.00	0.00	
7,000.0	14.60	293.27	6,791.0	652.8	-1,518.2	1,652.5	0.00	0.00	
7,100.0	14.60	293.27	6,887.8	662.7	-1,541.3	1,677.7	0.00	0.00	
7,153.9	14.60	293.27	6,940.0	668.1	-1,553.8	1,691.3	0.00	0.00	OHIO_CREEK.MBL (SSTVD)
7,200.0	14.60	293.27	6,984.6	672.7	-1,564.5	1,702.9	0.00	0.00	
7,300.0	14.60	293.27	7,081.3	682.6	-1,587.6	1,728.1	0.00	0.00	
7,400.0	14.60	293.27	7,178.1	692.6	-1,610.8	1,753.3	0.00	0.00	
7,500.0	14.60	293.27	7,274.9	702.5	-1,633.9	1,778.5	0.00	0.00	
7,524.9	14.60	293.27	7,299.0	705.0	-1,639.7	1,784.8	0.00	0.00	WILLIAMS_FORK.MBL (SSTVD)
7,600.0	14.60	293.27	7,371.7	712.5	-1,657.1	1,803.7	0.00	0.00	
7,651.7	14.60	293.27	7,421.7	717.6	-1,669.0	1,816.8	0.00	0.00	Start Drop -3.00
7,700.0	13.15	293.27	7,468.6	722.2	-1,679.7	1,828.3	3.00	-3.00	
7,800.0	10.15	293.27	7,566.5	730.2	-1,698.2	1,848.5	3.00	-3.00	
7,900.0	7.15	293.27	7,665.4	736.1	-1,712.0	1,863.6	3.00	-3.00	
8,000.0	4.15	293.27	7,764.9	740.0	-1,721.1	1,873.4	3.00	-3.00	
8,100.0	1.15	293.27	7,864.8	741.8	-1,725.3	1,878.0	3.00	-3.00	
8,138.3	0.00	0.00	7,903.0	742.0	-1,725.7	1,878.4	3.00	-3.00	Start 2054.0 hold at 8138.3 MD
8,200.0	0.00	0.00	7,964.7	742.0	-1,725.7	1,878.4	0.00	0.00	
8,238.3	0.00	0.00	8,003.0	742.0	-1,725.7	1,878.4	0.00	0.00	TOP_GAS.MBL (SSTVD)
8,300.0	0.00	0.00	8,064.7	742.0	-1,725.7	1,878.4	0.00	0.00	
8,400.0	0.00	0.00	8,164.7	742.0	-1,725.7	1,878.4	0.00	0.00	
8,500.0	0.00	0.00	8,264.7	742.0	-1,725.7	1,878.4	0.00	0.00	
8,600.0	0.00	0.00	8,364.7	742.0	-1,725.7	1,878.4	0.00	0.00	
8,700.0	0.00	0.00	8,464.7	742.0	-1,725.7	1,878.4	0.00	0.00	
8,800.0	0.00	0.00	8,564.7	742.0	-1,725.7	1,878.4	0.00	0.00	
8,900.0	0.00	0.00	8,664.7	742.0	-1,725.7	1,878.4	0.00	0.00	
9,000.0	0.00	0.00	8,764.7	742.0	-1,725.7	1,878.4	0.00	0.00	
9,100.0	0.00	0.00	8,864.7	742.0	-1,725.7	1,878.4	0.00	0.00	
9,200.0	0.00	0.00	8,964.7	742.0	-1,725.7	1,878.4	0.00	0.00	
9,300.0	0.00	0.00	9,064.7	742.0	-1,725.7	1,878.4	0.00	0.00	
9,400.0	0.00	0.00	9,164.7	742.0	-1,725.7	1,878.4	0.00	0.00	
9,500.0	0.00	0.00	9,264.7	742.0	-1,725.7	1,878.4	0.00	0.00	
9,517.3	0.00	0.00	9,282.0	742.0	-1,725.7	1,878.4	0.00	0.00	CAMEO.MBL (SSTVD)
9,600.0	0.00	0.00	9,364.7	742.0	-1,725.7	1,878.4	0.00	0.00	

Planning Report

Database:	USA EDM 5000 Multi Users DB	Local Co-ordinate Reference:	Well BATTLEMENT MESA 43A-27 795
Company:	Caerus Oil & Gas	TVD Reference:	30' KB @ 8994.0usft
Project:	Garfield County, CO (UTM 12N)	MD Reference:	30' KB @ 8994.0usft
Site:	S26-T6S-R95W (26K)	North Reference:	True
Well:	BATTLEMENT MESA 43A-27 795	Survey Calculation Method:	Minimum Curvature
Wellbore:	OH		
Design:	PLAN #1		

Planned Survey									
Measured Depth (usft)	Inclination (°)	Azimuth (°)	Vertical Depth (usft)	+N/-S (usft)	+E/-W (usft)	Vertical Section (usft)	Dogleg Rate (°/100usft)	Build Rate (°/100u)	Comments / Formations
9,700.0	0.00	0.00	9,464.7	742.0	-1,725.7	1,878.4	0.00	0.00	
9,800.0	0.00	0.00	9,564.7	742.0	-1,725.7	1,878.4	0.00	0.00	
9,900.0	0.00	0.00	9,664.7	742.0	-1,725.7	1,878.4	0.00	0.00	
10,000.0	0.00	0.00	9,764.7	742.0	-1,725.7	1,878.4	0.00	0.00	
10,042.3	0.00	0.00	9,807.0	742.0	-1,725.7	1,878.4	0.00	0.00	ROLLINS.MBL (SSTVD)
10,100.0	0.00	0.00	9,864.7	742.0	-1,725.7	1,878.4	0.00	0.00	
10,192.3	0.00	0.00	9,957.0	742.0	-1,725.7	1,878.4	0.00	0.00	TD at 10192.3 - TD.MBL (SSTVD)

Targets									
Target Name	Dip Angle (°)	Dip Dir. (°)	TVD (usft)	+N/-S (usft)	+E/-W (usft)	Northing (usft)	Easting (usft)	Latitude	Longitude
B MESA 43A-27 795 PB - hit/miss target - Shape - Circle (radius 50.0)	0.00	0.00	9,957.0	742.0	-1,725.7	14,324,780.00	2,494,674.70	39.407925	-107.975946

Formations						
Measured Depth (usft)	Vertical Depth (usft)	Name	Lithology	Dip (°)	Dip Direction (°)	
7,153.9	6,940.0	OHIO_CREEK.MBL (SSTVD)		0.00		
7,524.9	7,299.0	WILLIAMS_FORK.MBL (SSTVD)		0.00		
8,238.3	8,003.0	TOP_GAS.MBL (SSTVD)		0.00		
9,517.3	9,282.0	CAMEO.MBL (SSTVD)		0.00		
10,042.3	9,807.0	ROLLINS.MBL (SSTVD)		0.00		
10,192.3	9,957.0	TD.MBL (SSTVD)		0.00		

Plan Annotations				
Measured Depth (usft)	Vertical Depth (usft)	+N/-S (usft)	+E/-W (usft)	Comment
200.0	200.0	0.0	0.0	Start Build 3.00
686.5	681.3	24.3	-56.6	Start 6965.2 hold at 686.5 MD
7,651.7	7,421.7	717.6	-1,669.0	Start Drop -3.00
8,138.3	7,903.0	742.0	-1,725.7	Start 2054.0 hold at 8138.3 MD
10,192.3	9,957.0	742.0	-1,725.7	TD at 10192.3