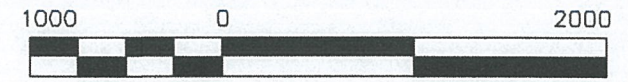
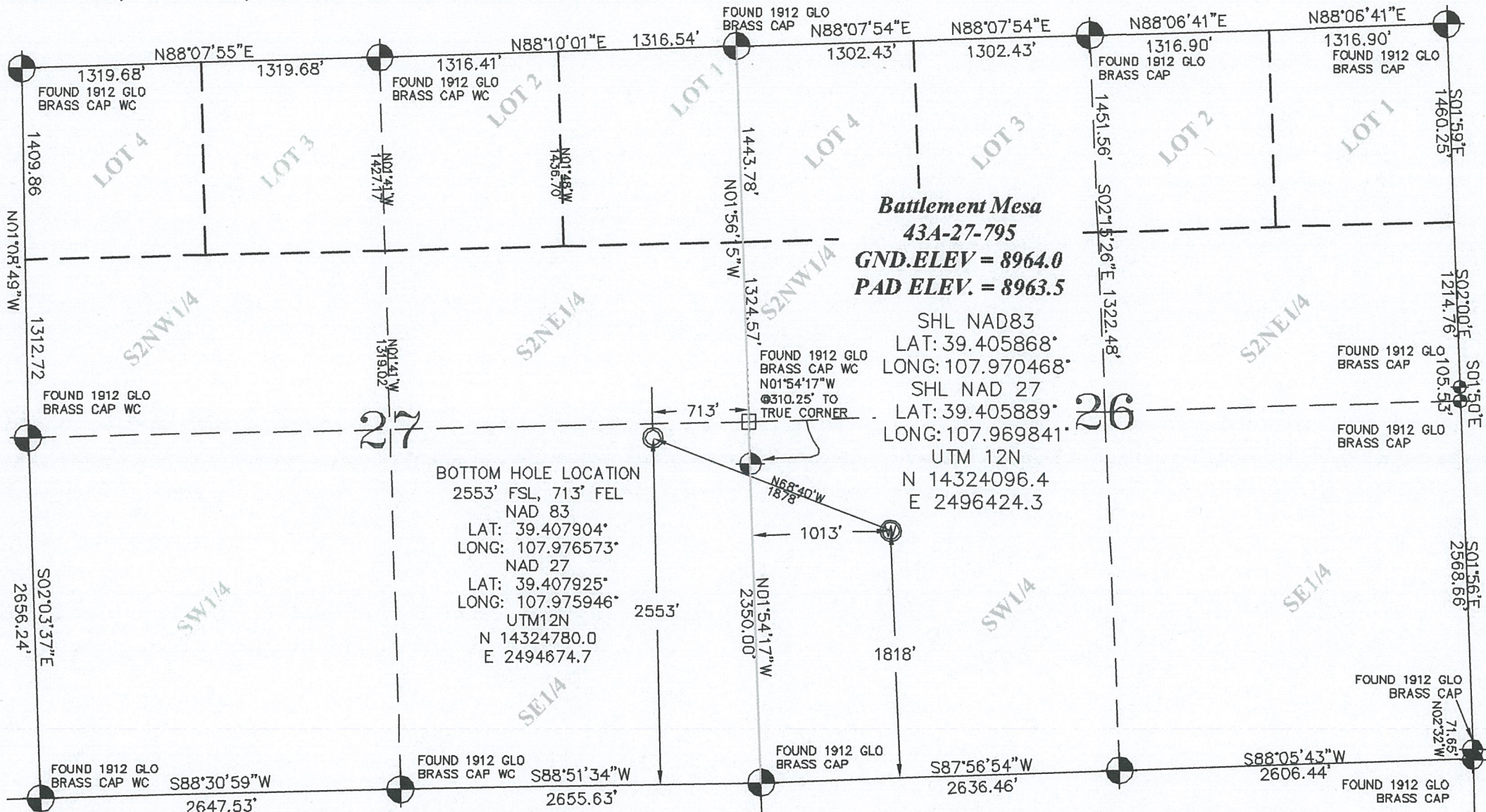


SEC. 26, T. 7 S., R. 95 W. OF THE 6TH P.M.

PLAT 1

BM 26K-795  
PAD  
LOCATION



GRAPHIC SCALE IN FEET  
1 INCH = 1000 FEET

**BOTTOM HOLE LOCATION**  
2553' FSL, 713' FEL  
NAD 83  
LAT: 39.407904°  
LONG: 107.976573°  
NAD 27  
LAT: 39.407925°  
LONG: 107.975946°  
UTM12N  
N 14324780.0  
E 2494674.7

**Battlement Mesa**  
**43A-27-795**  
**GND.ELEV = 8964.0**  
**PAD ELEV. = 8963.5**  
SHL NAD83  
LAT: 39.405868°  
LONG: 107.970468°  
SHL NAD 27  
LAT: 39.405889°  
LONG: 107.969841°  
UTM 12N  
N 14324096.4  
E 2496424.3

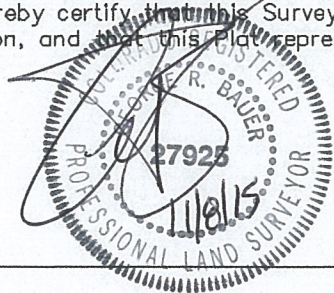
**-LEGEND-**

- FIELD SURVEYED SECTION CORNER LOCATIONS
- FIELD SURVEYED SECTION CORNER LOCATIONS
- FIELD SURVEYED WELL LOCATION
- CALCULATED BOTTOM HOLE LOCATION

**THIS WELL LOCATION PLAT WAS PREPARED FOR CAERUS PICEANCE LLC TO LOCATE THE BATTLEMENT MESA #43A-27-795 WELL, 1818 FEET FROM THE SOUTH LINE AND 1013 FEET FROM THE WEST LINE IN THE NW1/4SW1/4 OF SECTION 26, T. 7 S., R. 95 W. OF THE 6TH P.M. GARFIELD COUNTY, COLORADO.**

**SURVEYOR'S CERTIFICATE**

I, George R. Bauer: a Professional Land Surveyor in the State of Colorado do hereby certify that this Survey was made under my direct supervision, and that this plat represents said Survey.



**REFERENCE NOTES**

- 1) T. 7 S., R. 95 W., 6TH P.M. GLO PLAT.
- 2) U.S.G.S. QUAD: PARACHUTE, CO
- 3) ELEVATIONS BASED ON N.A.V.D. 1988 LIDAR BASED CONTROL PT CP MON 8
- 4) LATITUDES AND LONGITUDES ARE BASED ON NAD 83, COLORADO CENTRAL ZONE.
- 5) GPS OPERATOR Robert Wood, OBSERVED A PDOP OF 1.9.
- 6) ALL GPS OBSERVATIONS ARE IN COMPLIANCE WITH COGCC RULE NO. 215.
- 7) SURFACE AND BOTTOM HOLE LOCATIONS ARE MEASURED 90° FROM SECTION LINES.



**Battlement Mesa 26-K-795**  
**NWSW, SECTION 26, T. 7 S., R. 95 W.**

	<b>WELL LOCATION PLAT</b>	
	CONSTRUCTION SURVEYS, INC. 0012 SUNRISE BLVD. SILT, CO 81652 (970)876-5753	
	SURVEY BY:REW 10/13/15	PDOP: 1.9
	DRAWN BY:REW 11/06/15	
REVISED:	DWG: CAERUS\BM26K-795	