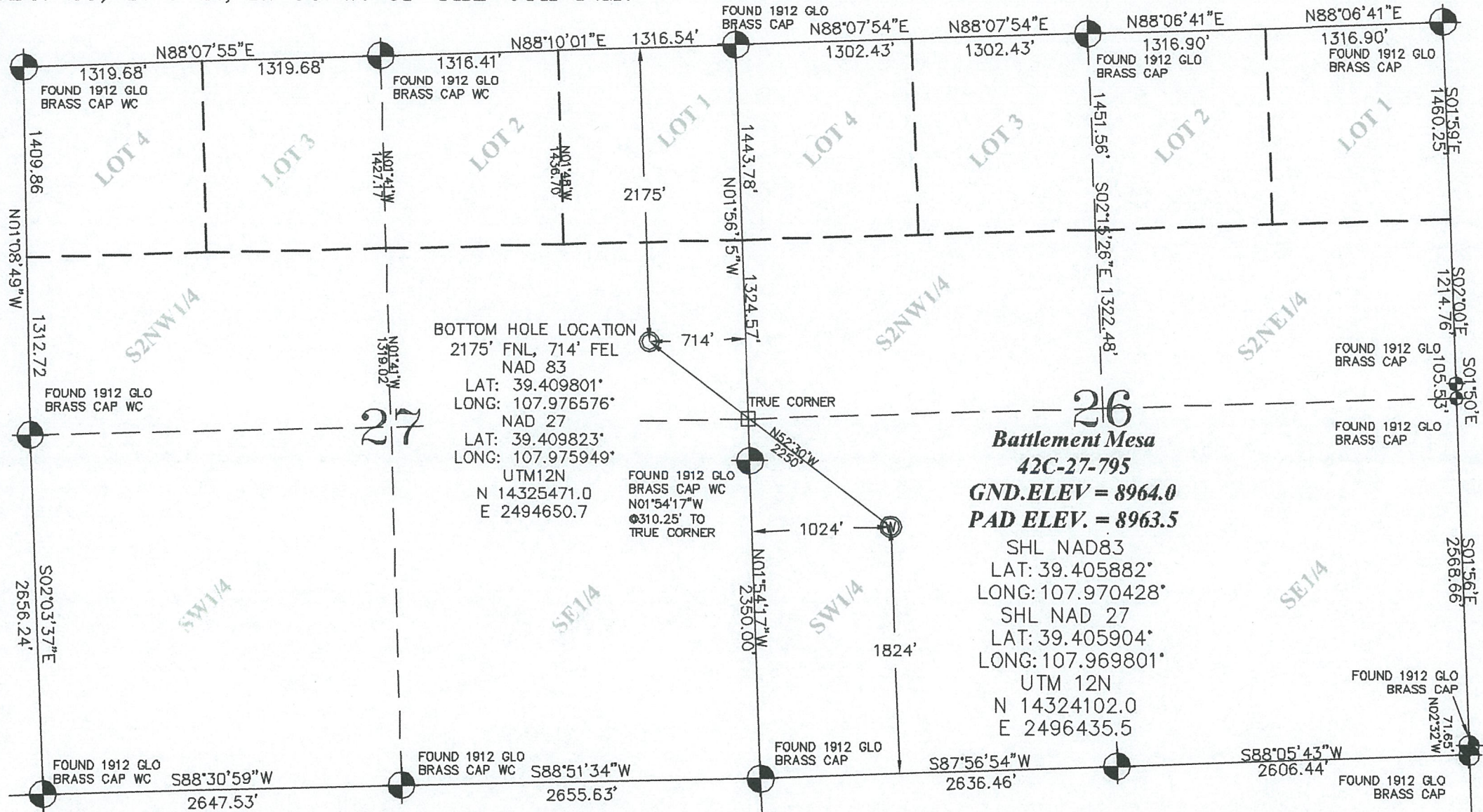


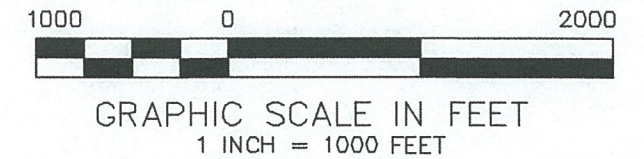
SEC. 26, T. 7 S., R. 95 W. OF THE 6TH P.M.

PLAT 1  
BM 26K-795  
PAD  
LOCATION



**BOTTOM HOLE LOCATION**  
2175' FNL, 714' FEL  
NAD 83  
LAT: 39.409801°  
LONG: 107.976576°  
NAD 27  
LAT: 39.409823°  
LONG: 107.975949°  
UTM12N  
N 14325471.0  
E 2494650.7

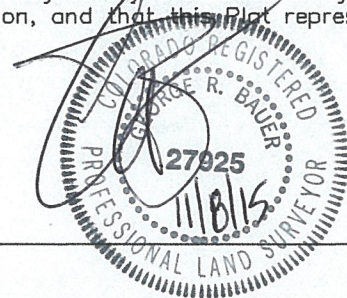
**Battlement Mesa**  
**42C-27-795**  
**GND.ELEV = 8964.0**  
**PAD ELEV. = 8963.5**  
SHL NAD83  
LAT: 39.405882°  
LONG: 107.970428°  
SHL NAD 27  
LAT: 39.405904°  
LONG: 107.969801°  
UTM 12N  
N 14324102.0  
E 2496435.5



**THIS WELL LOCATION PLAT WAS PREPARED FOR CAERUS PICEANCE LLC TO LOCATE THE BATTLEMENT MESA #42C-27-795 WELL, 1824 FEET FROM THE SOUTH LINE AND 1024 FEET FROM THE WEST LINE IN THE NW1/4SW1/4 OF SECTION 26, T. 7 S., R. 95 W. OF THE 6TH P.M. GARFIELD COUNTY, COLORADO.**

**SURVEYOR'S CERTIFICATE**

I, George R. Bauer: a Professional Land Surveyor in the State of Colorado do hereby certify that this Survey was made under my direct supervision, and that this Plat represents said Survey.



**REFERENCE NOTES**

- 1) T. 7 S., R. 95 W., 6TH P.M. GLO PLAT.
- 2) U.S.G.S. QUAD: PARACHUTE, CO
- 3) ELEVATIONS BASED ON N.A.V.D. 1988 LIDAR BASED CONTROL PT CP MON 8
- 4) LATITUDES AND LONGITUDES ARE BASED ON NAD 83, COLORADO CENTRAL ZONE.
- 5) GPS OPERATOR Robert Wood, OBSERVED A PDOP OF 1.9.
- 6) ALL GPS OBSERVATIONS ARE IN COMPLIANCE WITH COGCC RULE NO. 215.
- 7) SURFACE AND BOTTOM HOLE LOCATIONS ARE MEASURED 90° FROM SECTION LINES.



- LEGEND--**
- FIELD SURVEYED SECTION CORNER LOCATIONS
  - FIELD SURVEYED SECTION CORNER LOCATIONS
  - ⊙ FIELD SURVEYED WELL LOCATION
  - CALCULATED BOTTOM HOLE LOCATION

**Battlement Mesa 26-K-795**  
**NWSW, SECTION 26, T. 7 S., R. 95 W.**

WELL LOCATION PLAT	
CONSTRUCTION SURVEYS, INC. 0012 SUNRISE BLVD. SILT, CO 81652 (970)876-5753	
SURVEY BY: REW 10/13/15	PDOP: 1.9
DRAWN BY: REW 11/06/15	
REVISED:	DWG: CAERUS\BM26K-795