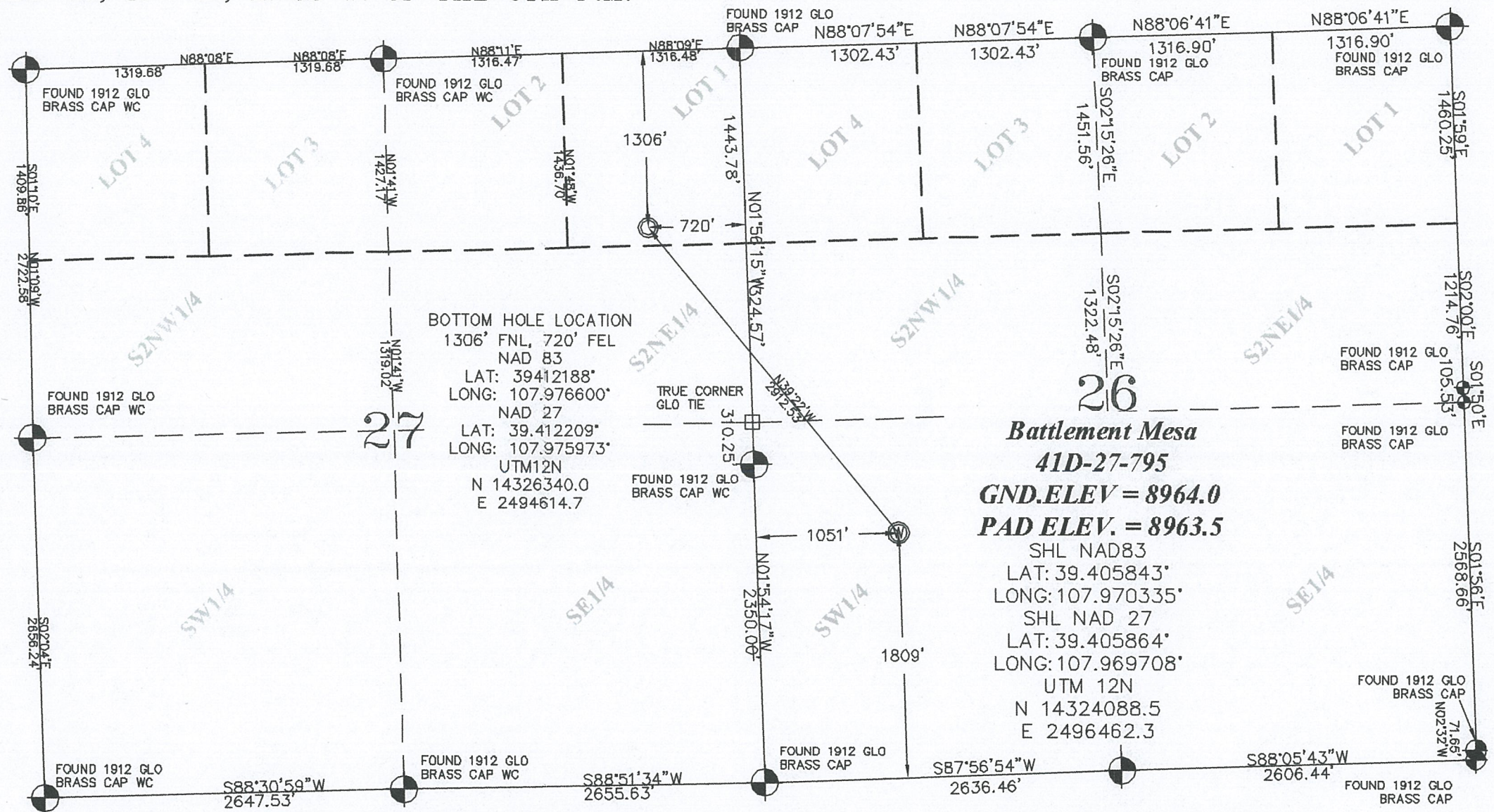


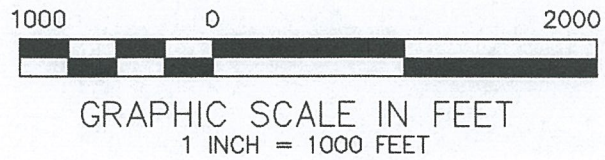
SEC. 26, T. 7 S., R. 95 W. OF THE 6TH P.M.

PLAT 1
BM 26K-795
PAD
LOCATION



BOTTOM HOLE LOCATION
1306' FNL, 720' FEL
NAD 83
LAT: 39.412188°
LONG: 107.976600°
NAD 27
LAT: 39.412209°
LONG: 107.975973°
UTM12N
N 14326340.0
E 2494614.7

26
Battlement Mesa
41D-27-795
GND.ELEV = 8964.0
PAD ELEV. = 8963.5
SHL NAD83
LAT: 39.405843°
LONG: 107.970335°
SHL NAD 27
LAT: 39.405864°
LONG: 107.969708°
UTM 12N
N 14324088.5
E 2496462.3



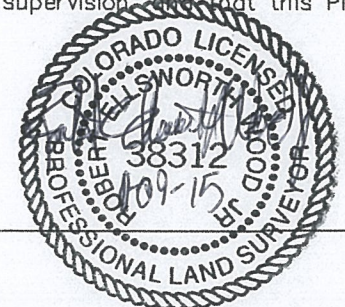
-LEGEND-

- FIELD SURVEYED SECTION CORNER LOCATIONS
- FIELD SURVEYED SECTION CORNER LOCATIONS
- FIELD SURVEYED WELL LOCATION
- CALCULATED BOTTOM HOLE LOCATION

THIS WELL LOCATION PLAT WAS PREPARED FOR CAERUS PICEANCE LLC TO LOCATE THE BATTLEMENT MESA #41D-27-795 WELL, 1809 FEET FROM THE SOUTH LINE AND 1051 FEET FROM THE WEST LINE IN THE NW1/4SW1/4 OF SECTION 26, T. 7 S., R. 95 W. OF THE 6TH P.M. GARFIELD COUNTY, COLORADO.

SURVEYOR'S CERTIFICATE

I, Robert Ellsworth Wood Jr: a Professional Land Surveyor in the State of Colorado do hereby certify that this Survey was made under my direct supervision and that this Plat represents said Survey.



REFERENCE NOTES

- 1) T. 7 S., R. 95 W., 6TH P.M. GLO PLAT.
- 2) U.S.G.S. QUAD: PARACHUTE, CO
- 3) ELEVATIONS BASED ON N.A.V.D. 1988 LIDAR BASED CONTROL PT CP MON 8
- 4) LATITUDES AND LONGITUDES ARE BASED ON NAD 83, COLORADO CENTRAL ZONE.
- 5) GPS OPERATOR Robert Wood, OBSERVED A PDOP OF 1.9.
- 6) ALL GPS OBSERVATIONS ARE IN COMPLIANCE WITH COGCC RULE NO. 215.
- 7) SURFACE AND BOTTOM HOLE LOCATIONS ARE MEASURED 90° FROM SECTION LINES.

Caerus Piceance LLC



Battlement Mesa 26-K-795
NWSW, SECTION 26, T. 7S., R. 95 W.

WELL LOCATION PLAT	
CONSTRUCTION SURVEYS, INC. 0012 SUNRISE BLVD. SILT, CO 81652 (970)876-5753	
SURVEY BY:REW 10/13/15	PDOP: 1.9
DRAWN BY:REW 11/09/15	
REVISED:	DWG: CAERUS\BM26K-795