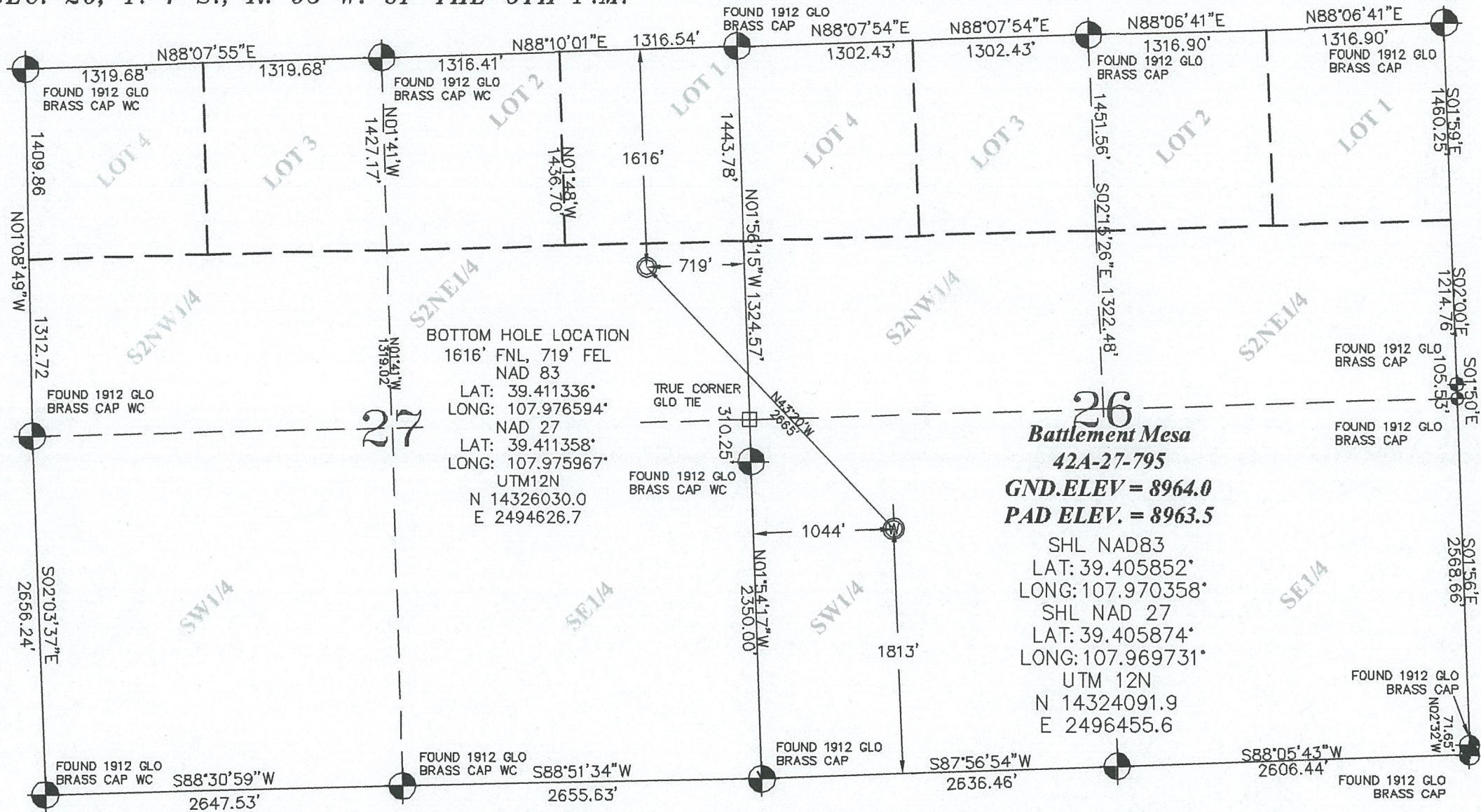


SEC. 26, T. 7 S., R. 95 W. OF THE 6TH P.M.

PLAT 1

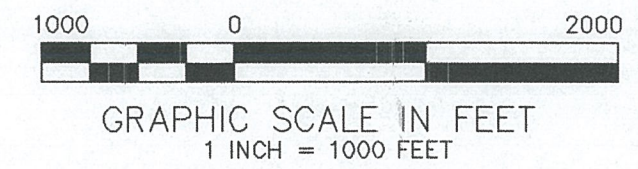
BM 26K-795
PAD
LOCATION



BOTTOM HOLE LOCATION
1616' FNL, 719' FEL
NAD 83
LAT: 39.411336°
LONG: 107.976594°
NAD 27
LAT: 39.411358°
LONG: 107.975967°
UTM12N
N 14326030.0
E 2494626.7

26
Battlement Mesa
42A-27-795
GND.ELEV = 8964.0
PAD ELEV. = 8963.5

SHL NAD83
LAT: 39.405852°
LONG: 107.970358°
SHL NAD 27
LAT: 39.405874°
LONG: 107.969731°
UTM 12N
N 14324091.9
E 2496455.6

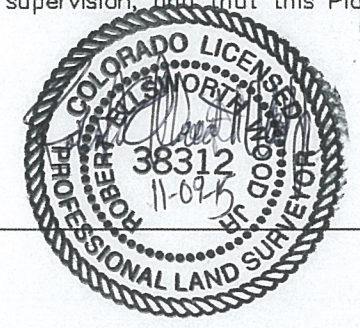


- LEGEND-**
- FIELD SURVEYED SECTION CORNER LOCATIONS
 - FIELD SURVEYED SECTION CORNER LOCATIONS
 - FIELD SURVEYED WELL LOCATION
 - CALCULATED BOTTOM HOLE LOCATION

THIS WELL LOCATION PLAT WAS PREPARED FOR CAERUS PICEANCE LLC TO LOCATE THE BATTLEMENT MESA #42A-27-795 WELL, 1813 FEET FROM THE SOUTH LINE AND 1044 FEET FROM THE WEST LINE IN THE NW1/4SW1/4 OF SECTION 26, T. 7 S., R. 95 W. OF THE 6TH P.M. GARFIELD COUNTY, COLORADO.

SURVEYOR'S CERTIFICATE

I, Robert Ellsworth Wood Jr: a Professional Land Surveyor in the State of Colorado do hereby certify that this Survey was made under my direct supervision, and that this Plat represents said Survey.



REFERENCE NOTES

- 1) T. 7 S., R. 95 W., 6TH P.M. GLO PLAT.
- 2) U.S.G.S. QUAD: PARACHUTE, CO
- 3) ELEVATIONS BASED ON N.A.V.D. 1988 LIDAR BASED CONTROL PT CP MON B
- 4) LATITUDES AND LONGITUDES ARE BASED ON NAD 83, COLORADO CENTRAL ZONE.
- 5) GPS OPERATOR Robert Wood, OBSERVED A PDOP OF 1.9.
- 6) ALL GPS OBSERVATIONS ARE IN COMPLIANCE WITH COGCC RULE NO. 215.
- 7) SURFACE AND BOTTOM HOLE LOCATIONS ARE MEASURED 90° FROM SECTION LINES.



Battlement Mesa 26-K-795
NWSW, SECTION 26, T. 7 S., R. 95 W.

	WELL LOCATION PLAT	
	CONSTRUCTION SURVEYS, INC. 0012 SUNRISE BLVD. SILT, CO 81652 (970)876-5753	
SURVEY BY: REW 10/13/15	PDOP: 1.9	
DRAWN BY: REW 11/06/15		
REVISED:		DWG: CAERUS\BM26K-795