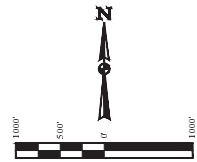


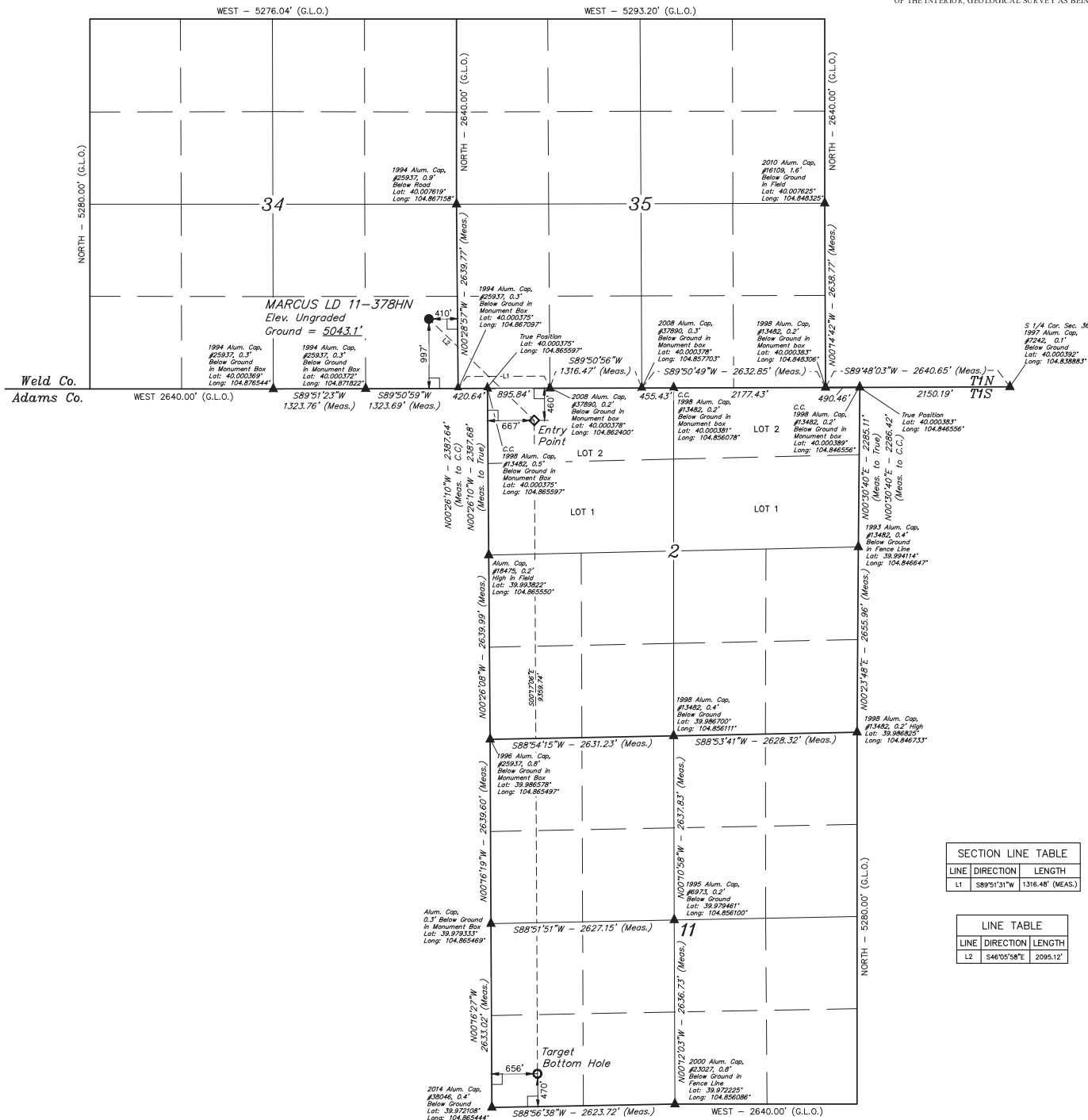
- LEGEND:**
- 90° SYMBOL
 - PROPOSED WELLHEAD
 - ENTRY POINT
 - TARGET BOTTOM HOLE
 - SECTION CORNERS LOCATED

T1N, R67W, 6th P.M.



BASIS OF BEARINGS
BASIS OF BEARINGS IS A G.P.S. OBSERVATION

BASIS OF ELEVATION
BENCHMARK IR 53 5026 LOCATED IN THE SW 1/4 SE 1/4 OF SECTION 18, T1N, R68W, 6th P.M., TAKEN FROM 1988 PUBLISHED DATUM BY THE UNITED STATES DEPARTMENT OF THE INTERIOR, GEOLOGICAL SURVEY AS BEING 5028 FEET



SECTION LINE TABLE		
LINE	DIRECTION	LENGTH
L1	S89°51'31"W	1316.48' (MEAS.)

LINE TABLE		
LINE	DIRECTION	LENGTH
L2	S40°05'58"E	2095.12'

THIS IS TO CERTIFY THAT THE ABOVE DESCRIBED SURVEY WAS MADE BY ME OR UNDER MY CLOSE PERSONAL SUPERVISION AND THAT THE SAME ARE TRUE AND CORRECT TO THE BEST OF MY KNOWLEDGE AND BELIEF.

[Signature]
JARED CHRISTOPHER, J.C.
REGISTERED LAND SURVEYOR
REG. NO. 12623
STATE OF COLORADO

GREAT WESTERN OIL & GAS COMPANY
MARCUS LD 11-378HN
SE 1/4 SE 1/4, SECTION 34, T1N, R67W, 6th P.M.
WELD COUNTY, COLORADO

UELS, LLC
Corporate Office • 85 South 200 East
Vernal, UT 84078 • (435) 789-1817



PDOP = 1.4

NAD83 (TARGET BOTTOM HOLE)	NAD83 (ENTRY POINT)	NAD83 (SURFACE LOCATION)
LATITUDE = 39°58'24.34" (39.973428)	LATITUDE = 39°59'36.81" (39.99114)	LATITUDE = 40°00'11.19" (40.003108)
LONGITUDE = 104°51'47.19" (104.863108)	LONGITUDE = 104°51'47.55" (104.863208)	LONGITUDE = 104°52'06.30" (104.86858)
NAD27 (TARGET BOTTOM HOLE)	NAD27 (ENTRY POINT)	NAD27 (SURFACE LOCATION)
LATITUDE = 39°58'24.30" (39.97342)	LATITUDE = 39°59'36.87" (39.99131)	LATITUDE = 40°00'11.25" (40.003125)
LONGITUDE = 104°51'45.28" (104.862578)	LONGITUDE = 104°51'45.64" (104.862678)	LONGITUDE = 104°52'04.99" (104.868053)

WELL LOCATION PLAT