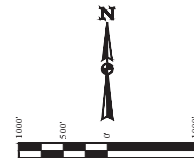


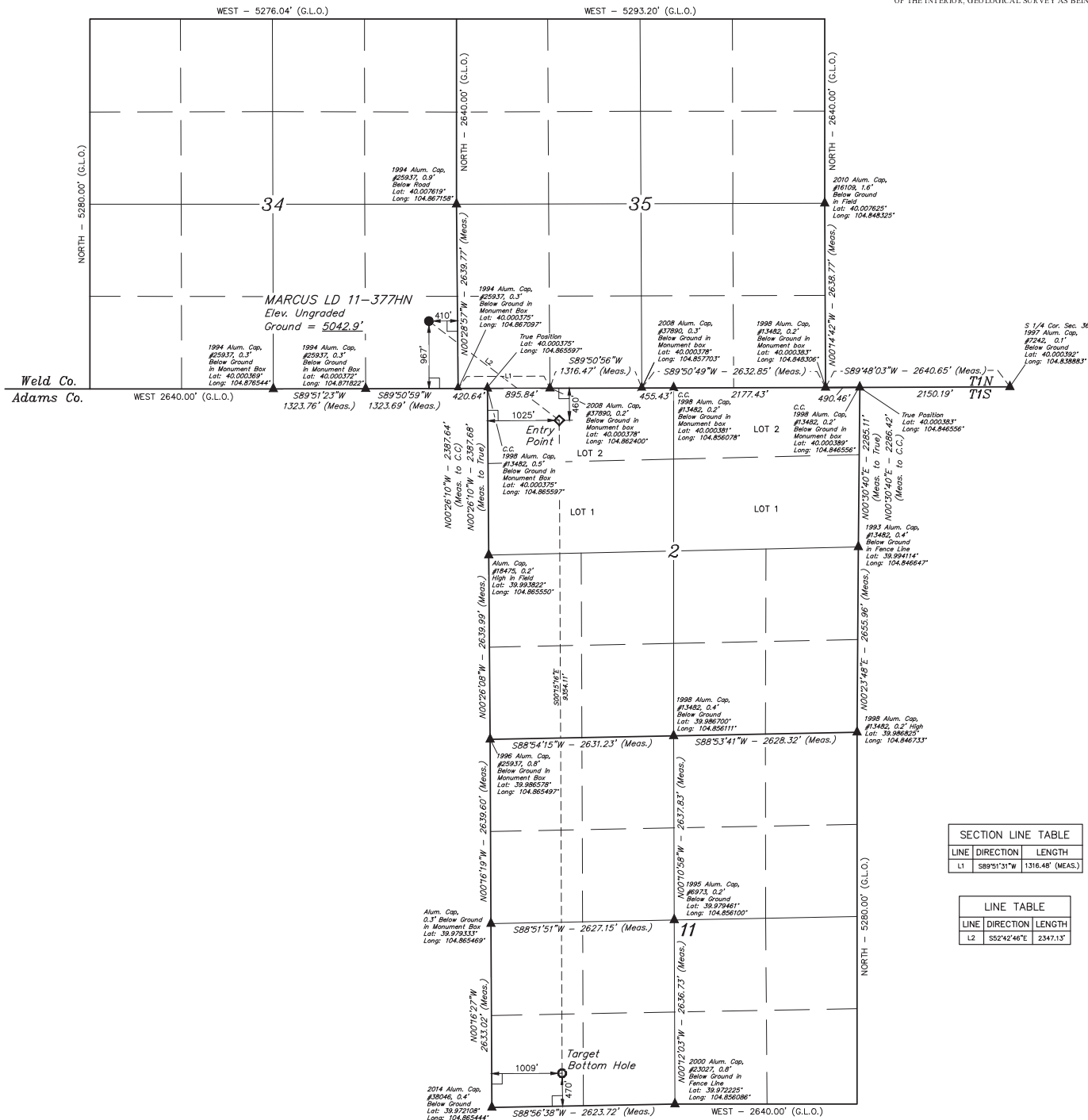
- LEGEND:**
- 90° SYMBOL
 - PROPOSED WELLHEAD
 - ENTRY POINT
 - TARGET BOTTOM HOLE
 - SECTION CORNERS LOCATED

T1N, R67W, 6th P.M.



BASIS OF BEARINGS
BASIS OF BEARINGS IS A G.P.S. OBSERVATION

BASIS OF ELEVATION
BENCHMARK IR 53 5026 LOCATED IN THE SW 1/4 SE 1/4 OF SECTION 18, T1N, R68W, 6th P.M., TAKEN FROM 1988 PUBLISHED DATUM BY THE UNITED STATES DEPARTMENT OF THE INTERIOR, GEOLOGICAL SURVEY AS BEING 5028 FEET



SECTION LINE TABLE		
LINE	DIRECTION	LENGTH
L1	S89°51'51"W	1316.48' (MEAS.)

LINE TABLE		
LINE	DIRECTION	LENGTH
L2	S52°42'46"E	2347.13'

THIS IS TO CERTIFY THAT THE ABOVE DESCRIBED SURVEY WAS MADE BY ME OR UNDER MY CLOSE PERSONAL SUPERVISION AND THAT THE SAME ARE TRUE AND CORRECT TO THE BEST OF MY KNOWLEDGE AND BELIEF.

[Signature]
JARED CHRISTOPHER, J.C.
REGISTERED PROFESSIONAL SURVEYOR
No. 24233
STATE OF COLORADO

GREAT WESTERN OIL & GAS COMPANY
MARCUS LD 11-377HN
SE 1/4 SE 1/4, SECTION 34, T1N, R67W, 6th P.M.
WELD COUNTY, COLORADO

UELS, LLC
Corporate Office • 85 South 200 East
Vernal, UT 84078 • (435) 789-1817



PDOP = 1.4

NAD83 TARGET BOTTOM HOLE	NAD83 ENTRY POINT	NAD83 SURFACE LOCATION
LATITUDE = 39°58'24.30" (39.973442) LONGITUDE = 104°51'42.66" (104.861850)	LATITUDE = 39°59'56.81" (39.999141) LONGITUDE = 104°51'42.95" (104.861931)	LATITUDE = 40°00'09.00" (40.000250) LONGITUDE = 104°52'06.30" (104.868583)
NAD83 TARGET BOTTOM HOLE	NAD83 ENTRY POINT	NAD83 SURFACE LOCATION
LATITUDE = 39°58'24.45" (39.973458) LONGITUDE = 104°51'40.75" (104.861319)	LATITUDE = 39°59'56.87" (39.999131) LONGITUDE = 104°51'41.04" (104.861400)	LATITUDE = 40°00'09.07" (40.000346) LONGITUDE = 104°52'04.99" (104.868053)

SURVEYED BY JARED CHRISTOPHER, J.C. DATE 11-20-14
DRAWN BY J.W. DATE DRAWN 12-01-14
SCALE 1" = 1000' REVISED 00-00-00
WELL LOCATION PLAT