

T7N, R80W, 6th P.M.

GLO Brass Cap 1939  
Elev. = 8091'  
N=1462619.36, E=2753447.58

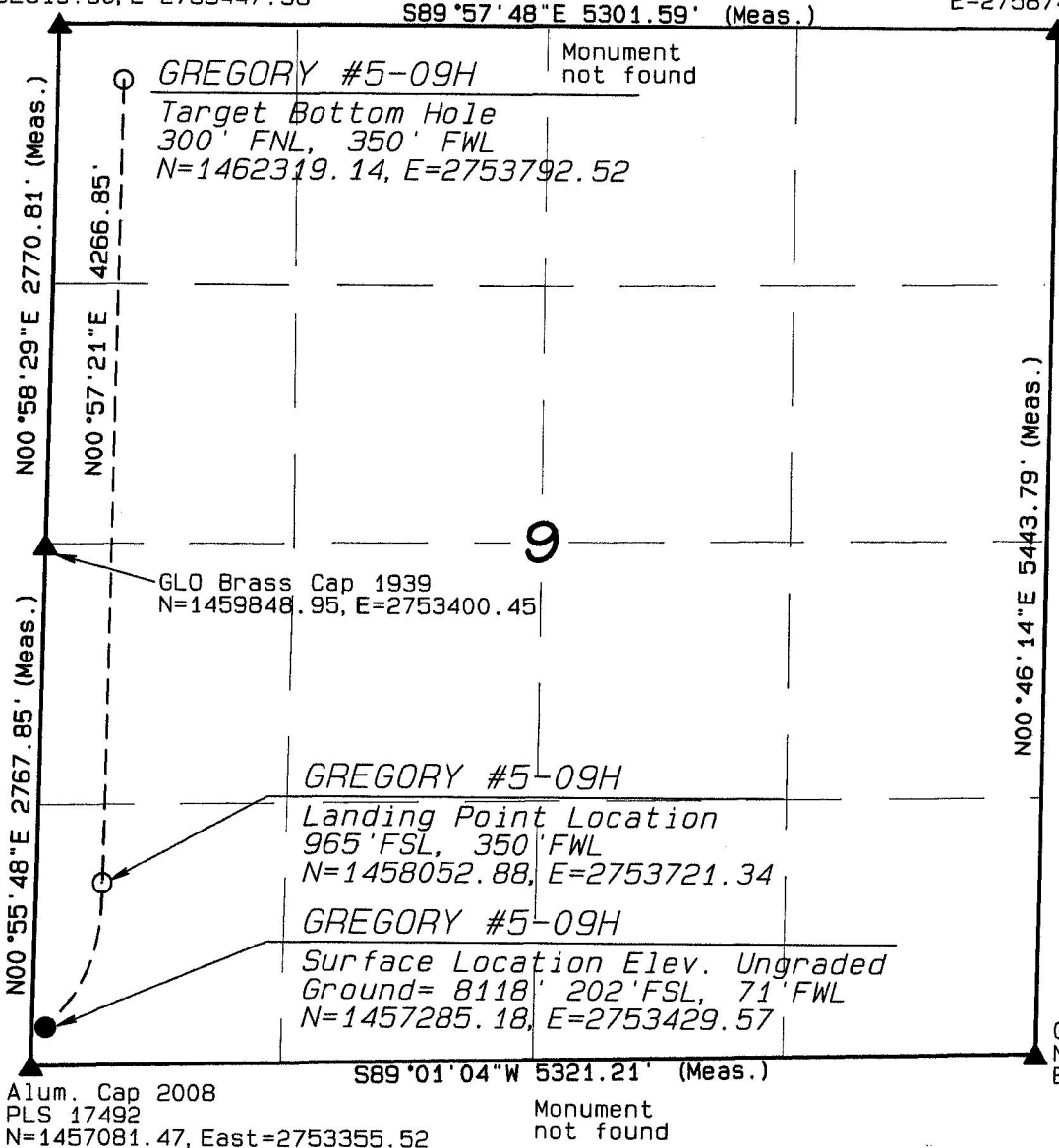
GLO Brass  
Cap 1939  
N=1462615.97  
E=2758749.16

EE3 LLC

Well location, GREGORY #5-09H, located as shown in the SW1/4SW1/4 of Section 9, T7N, R80W, 6th P.M., Jackson County, Colorado.

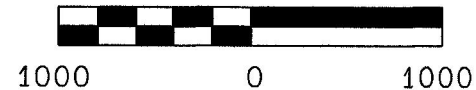
BASIS OF BEARINGS:  
US STATE PLANE 1983  
CO NORTH 0501 GRID

BASIS OF ELEVATION  
SPOT ELEVATION AT THE NW CORNER OF SECTION 9, T7N, R80W, 6TH PM, TAKEN FROM THE COALMONT QUADRANGLE, USGS 7.5 MIN QUAD (TOPOGRAPHIC MAP) WITH SAID ELEVATION MARKED AS BEING 8091 FEET.



Monument  
not found

GRAPHIC SCALE 1"=1000'

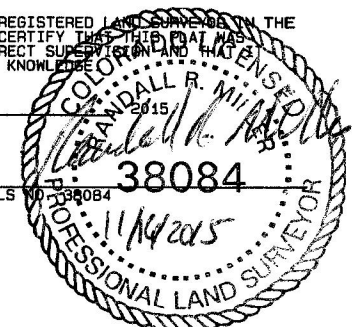


I, RANDALL R. MILLER, BEING A REGISTERED LAND SURVEYOR IN THE STATE OF COLORADO, DO HEREBY CERTIFY THAT THIS PLAT WAS MADE BY ME AND/OR UNDER MY DIRECT SUPERVISION AND THAT IT IS ACCURATE TO THE BEST OF MY KNOWLEDGE.

DATED THIS \_\_\_\_\_ DAY OF \_\_\_\_\_

RANDALL R. MILLER, COLORADO PLS NO. 38084

GLO Brass Cap 1939  
N=1457172.68  
E=2758675.95



# LEGEND

FOUND CORNER ▲  
PROPOSED WELL ●  
PROPOSED BHL/LPL ○

NAD 83 (TARGET BOTTOM HOLE)  
LATITUDE=40.5990855°N  
LONGITUDE=106.386634°W

NAD 83 (SURFACE LOCATION)  
LATITUDE=40.585258°N  
LONGITUDE=106.387760°W PDOP = 1.398

NAD 83 (LANDING POINT LOCATION)  
LATITUDE=40.587373°N  
LONGITUDE=106.386737°W

NORTH PARK ENGINEERING & CONSULTING, INC.

P.O. BOX 395  
WALDEN, CO 80480  
(970) 723-3725

DATE OF FIELD WORK: SEPT 12, 2013 DRAWING COMPLETION: NOV. 16, 2015  
SURVEYED BY: RAS DRAWN BY: TAT/TKH CHECKED BY: RRM