

LWD REALTIME LOG



Natural Formation Evaluation
Gamma Ray

Scale:

1:240 MD

Company: Anadarko

Well: Carter 34C-33HZ

Depth Reference:

Field: Weld County (Kerr McGee)

Driller's Depth

County: Weld State: Colorado

Status:

Final Print

Surface Location:

Latitude: 040° 05' 58.499" N

Longitude: 104° 47' 12.872" W

Other Services:

API No: 05-123-41553-00

Directional VSS

Job ID: 7446820

SEC: 33

TWN: 2N

RGE: 66W

Permanent Datum (P.D.): Ground Level

Elevation: 4959.00 ft

KB: 0.00 ft

Log Measured From: Rig Floor

Above P.D.

16.00 ft

DF: 4975.00 ft

GL: 4959.00 ft

Dates

Interval Logged

Magnetic Field Reference

Date From: 2015-09-25

Top: (ft) 7000.00

Azi Reference North: True

Dip Angle: (deg) 66.72

Date To: 2015-09-26

Bottom: (ft) 13063.00

Total Magnetic Field Strength: (nT) 52748

Spud Date: 2015-09-23

Mag to Reference North Correction: (deg) 8.35 E

Borehole Record

Casing Record

Hole Size (in)

From (ft)

To (ft)

Size (in)

Weight (lb/ft)

From (ft)

To (ft)

7.875

1870.00

13062.97

9.625

35.00

16.00

1861.00

Mud Record

Deviation Record

Type

From (ft)

To (ft)

Hole Size (in)

Interval (ft)

Inc | Az (Start)

Inc | Az (End)

Oil Based Mud

7000.00

13062.97

7.875

11192.97

21.80 | 321.69

89.35 | 179.81

Acquisition System

Software Version

Other

Baker Hughes Cadence

2.0.7102.1

Rig:

Xtreme 23

Pilot Studio

2.0.7102.1

Contractor:

Xtreme Drilling

Unit:

D&E

"These interpretations and analyses ("Interpretations") are opinions provided by Baker Hughes Oilfield Operations, Inc ("Baker Hughes"), based upon industry practice, empirical relationships, assumptions and measurements, (many of which may be provided by the customer). The Interpretations are not infallible and may be subject to different opinions. Thus, Baker Hughes does not warrant their accuracy, correctness, or completeness, or that the customer's and/or any third party's reliance on such Interpretations will accomplish any particular results. The customer assumes full responsibility for the use of the Interpretations and for decisions based thereon and the customer agrees to release, defend and indemnify Baker Hughes, its parent, subsidiaries and affiliated or related entities, and subcontractors, together with its and their officers, directors, employees, agents and invitees against, any and all claims, losses, damages, or expenses sustained by the customer or any third party arising out of reliance upon or use of the Interpretations, without regard to the cause(s) thereof, including without limitation any form of negligence on the

part of Baker Hughes. Unless other contract terms have been agreed to by the parties, each party's liabilities and obligations shall be governed by Baker Hughes Incorporated's Worldwide Terms and Conditions."

Log Run Summary

Run No	Bit Run No.	Bit Size (in)	Bit Type	Bit Gauge Length (in)	Assembly Type	Logged Interval		Bit Depth Interval		Date / Time		Circ. Hours (h)
						Top	Bottom	From	To	Start Logging	End Logging	
						(ft)	(ft)	(ft)	(ft)			
1	1	7.875	PDC	3.00	Motor	6954.27	13016.90	7000.34	13062.97	2015-09-25 14:59	2015-09-26 22:34	42.41

Crew

Name		Arrive Wellsite	Depart Wellsite	Name		Arrive Wellsite	Depart Wellsite	Name		Arrive Wellsite	Depart Wellsite
Hans Cary		2015-09-24	2015-09-27	Matthew Delmore		2015-09-24	2015-09-27	Sumanth Belawadi		2015-09-24	2015-09-26
William Drake		2015-09-24	2015-09-27	Andrew Clancy		2015-09-26	2015-09-27				

Mud Properties Record

Date / Time		Run No.	Measured Depth (ft)	Mud Type	Density (ppg)	Viscosity (cP)	pH	Fluid Loss (cm3)	Oil / Water	Source	Total Chlorides (ppm)	K+ (%)
2015-09-26 06:00		1	9866.35	Oil Based Mud	9.4	48	N/A	0.0	68.7/31.3	Active Pit	64000	0.00

Equipment and Service Data

Run No.	Tool	Serial Number	Measurement	Sensor Offset (ft)	Bit Offset (ft)	Max O.D. (in)	Min I.D. (in)
1	NaviGamma	506	Gamma (single)	15.11	46.07	6.500	3.250
1	NaviGamma	506	Directional (mag)	18.61	49.57	6.500	3.250
1	NaviGamma	506	VSS	18.61	49.57	6.500	3.250

Comments

- 1
- Depth measurements were obtained from a depth control system not supplied or operated by baker Hughes. Due to lack of control by Baker Hughes logging engineers, depth calibrations and measurements could not be independently verified and the unverified depths as supplied to Baker Hughes are being used to represent logging data.
- 2
- Baker Hughes Run 1 utilized a 6 1/2 inch Navigamma (Directional and Gamma Ray) tool behind an 7 7/8 inch bit and steerable assembly from 1870 to 13062 feet MD (1820.19 to 7514.12 feet TVD).
- 3
- A sliding indicator is shown on the left side of the track as a heavy line. This indicator has been depth-shifted to the Gamma Ray sensor offset to correspond with Gamma Ray data acquired while sliding.


Remarks

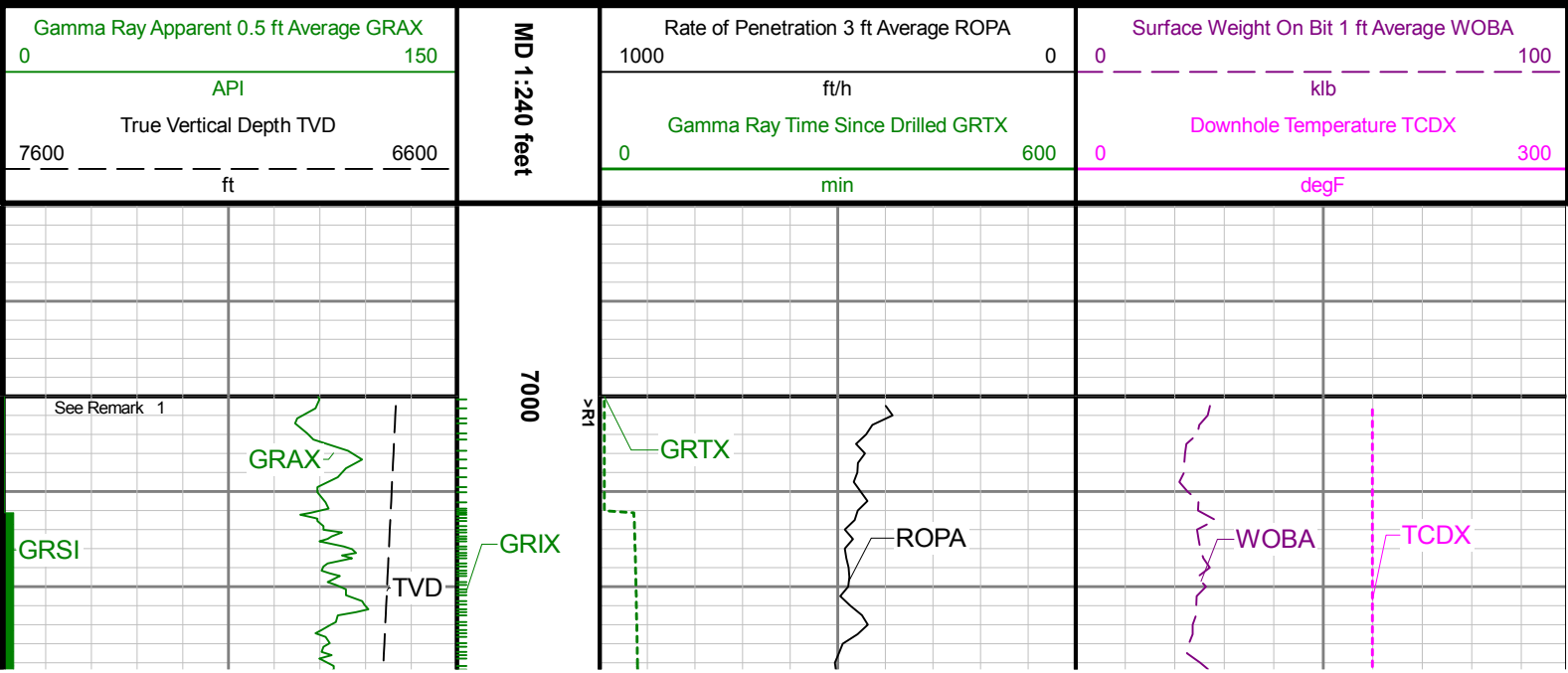
	Measured	Hole	Run	
--	----------	------	-----	--

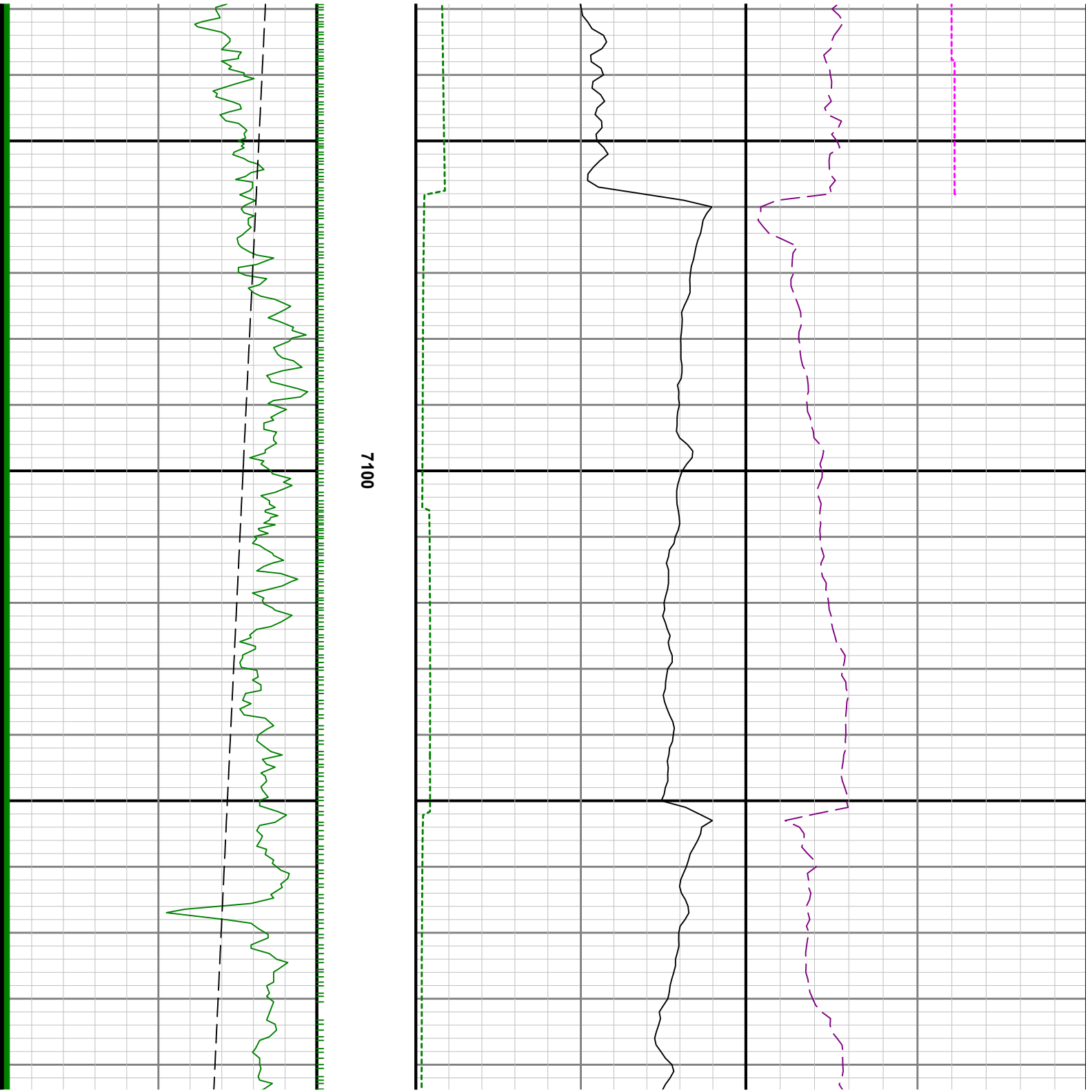
Number	Depth (ft)	Section (in)	No.	Remark
1	7000.00	7.875	1	Logging services began at 7000 feet MD. No logging data prior to 7000 feet MD (6732.93 feet TVD) as per client request.
2	13062.00	7.875	1	The interval between 13016 to 13062 feet (7513.59 to 7514.12 feet TVD) has no GRAX, GRIX, GRTX values due to Gamma sensor offset to bit after TD

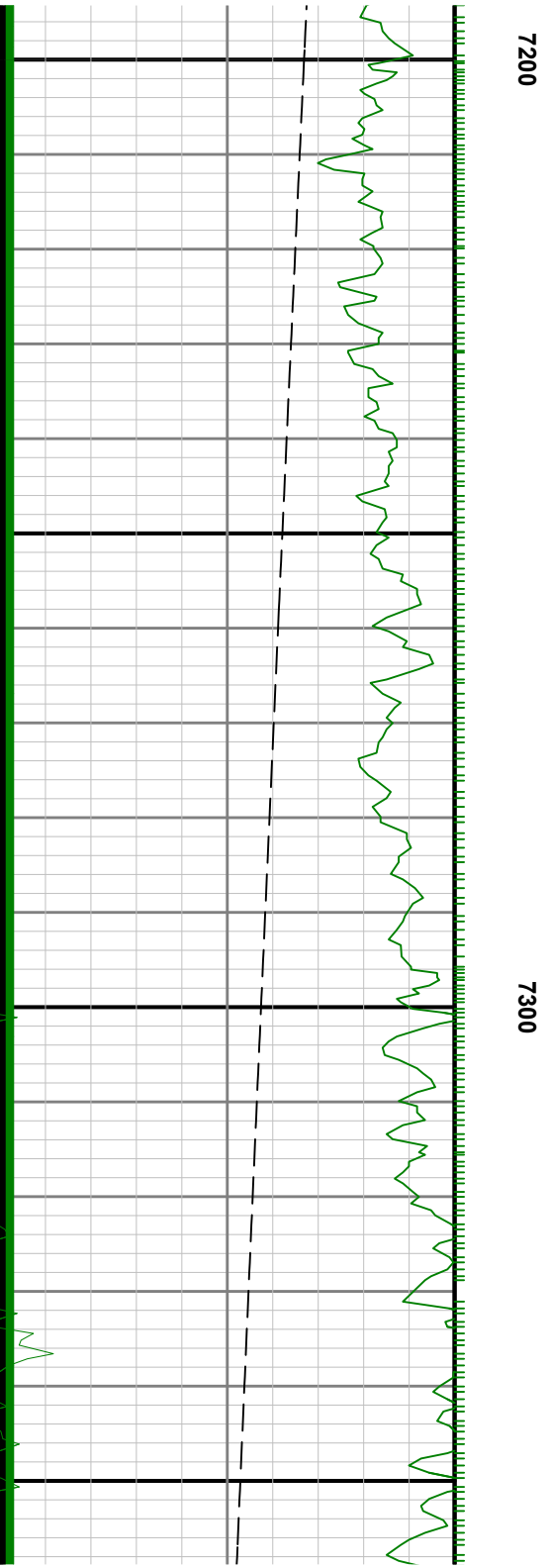
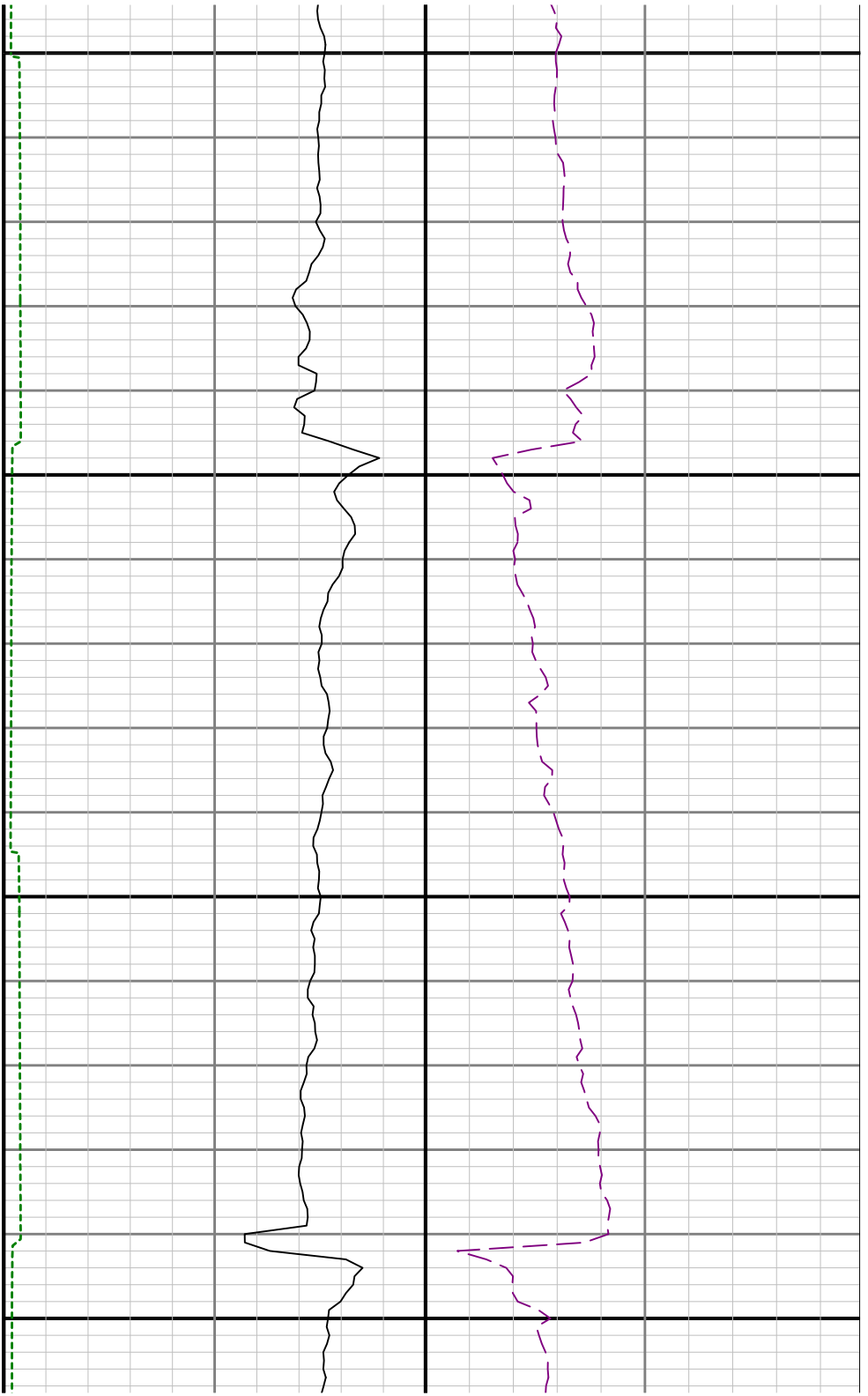
Curve Mnemonics

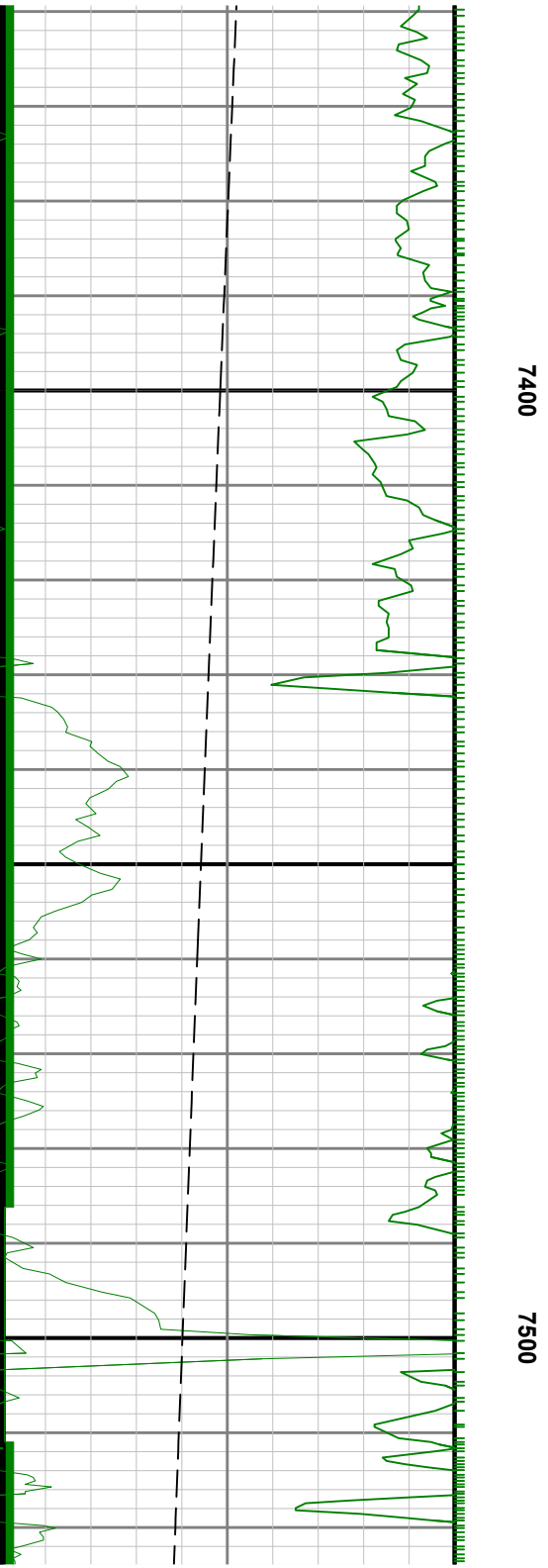
Presented Curves	Description	Units
ROPA	Depth Averaged ROP 3 ft Average	ft/h
GRAX	Gamma Ray - Apparent 0.5 ft Average	API
GRIX	Gamma Ray - Data Point Indicator	unitless
GRTX	Gamma Time Since Drilled	min
GRSI	Sliding Indicator Flag	unitless </td
TCDX	Downhole Temperature	degF
TVD	True Vertical Depth	ft
WOBA	Weight On Bit, Average 1 ft Average	klb

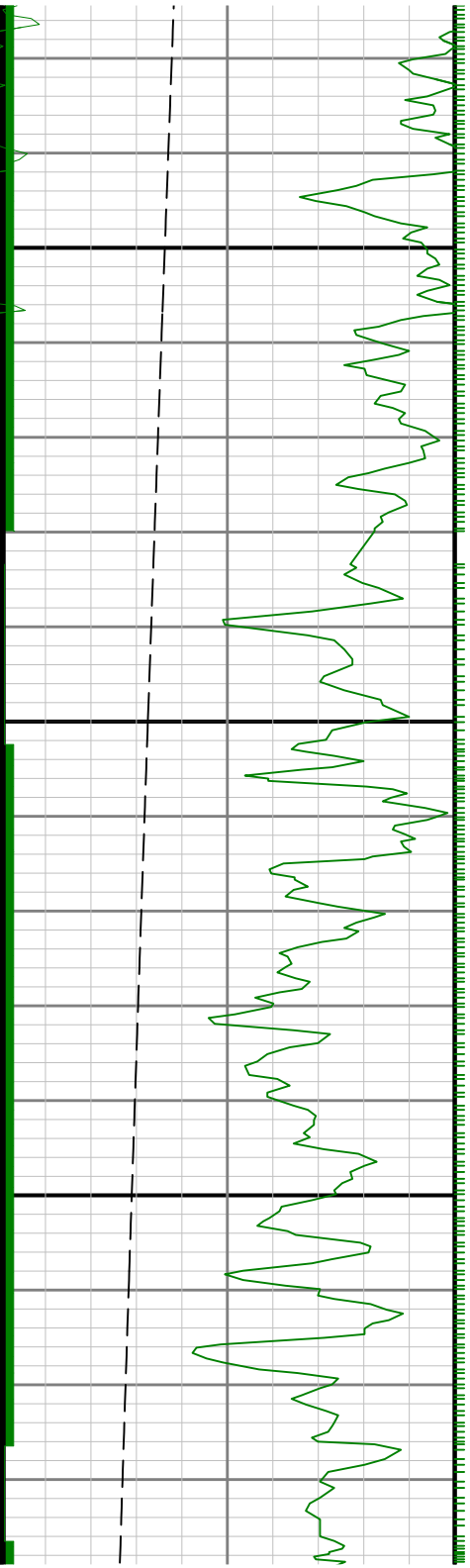
	Company	Anadarko			
	Well	Carter 34C-33HZ			
	Interval	Date From:	2015-09-25 14:59	Top:	7000.00
	Created	Date To:	2015-09-26 22:33	Bottom:	13063.00
		2015-09-26 23:37			



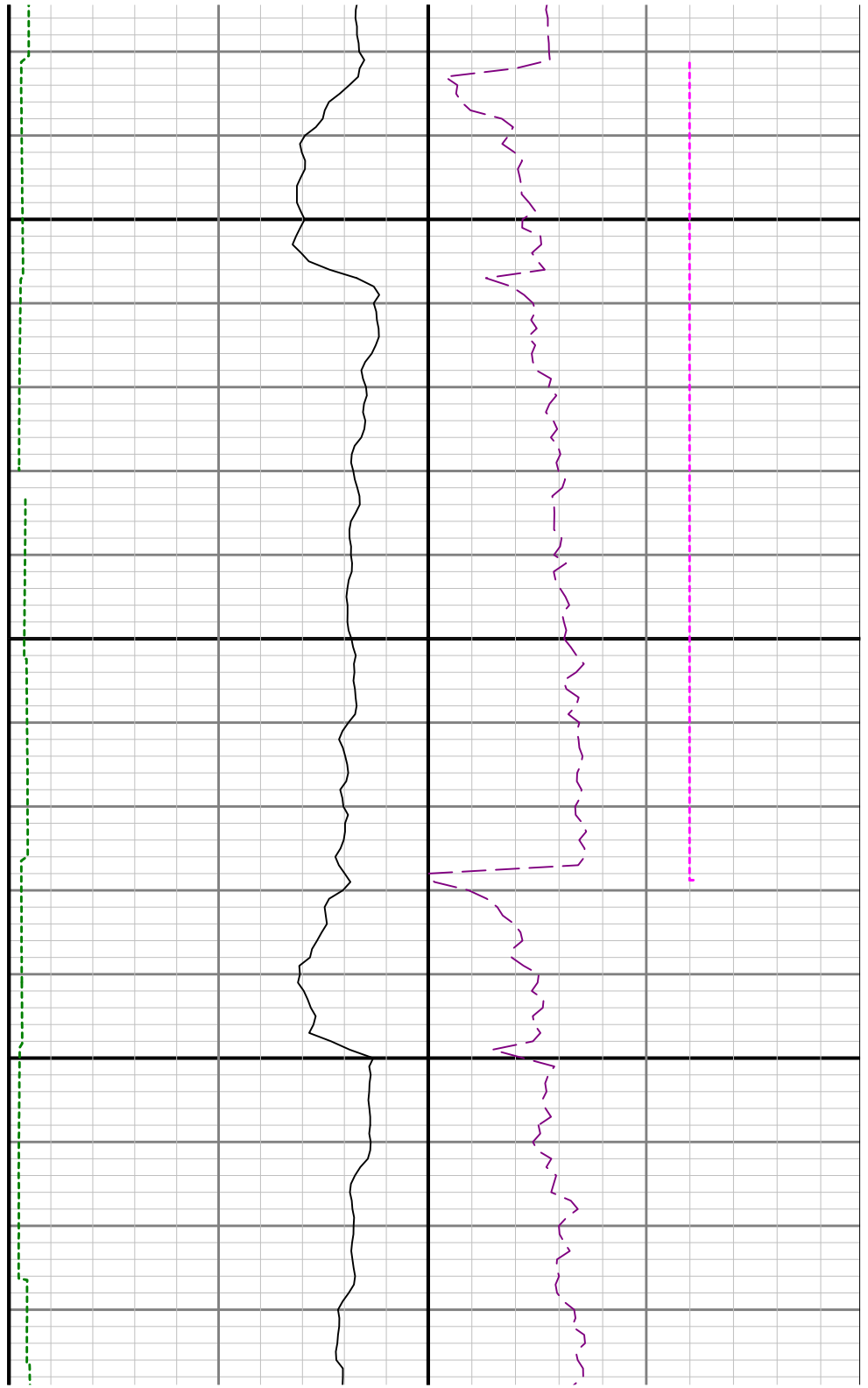


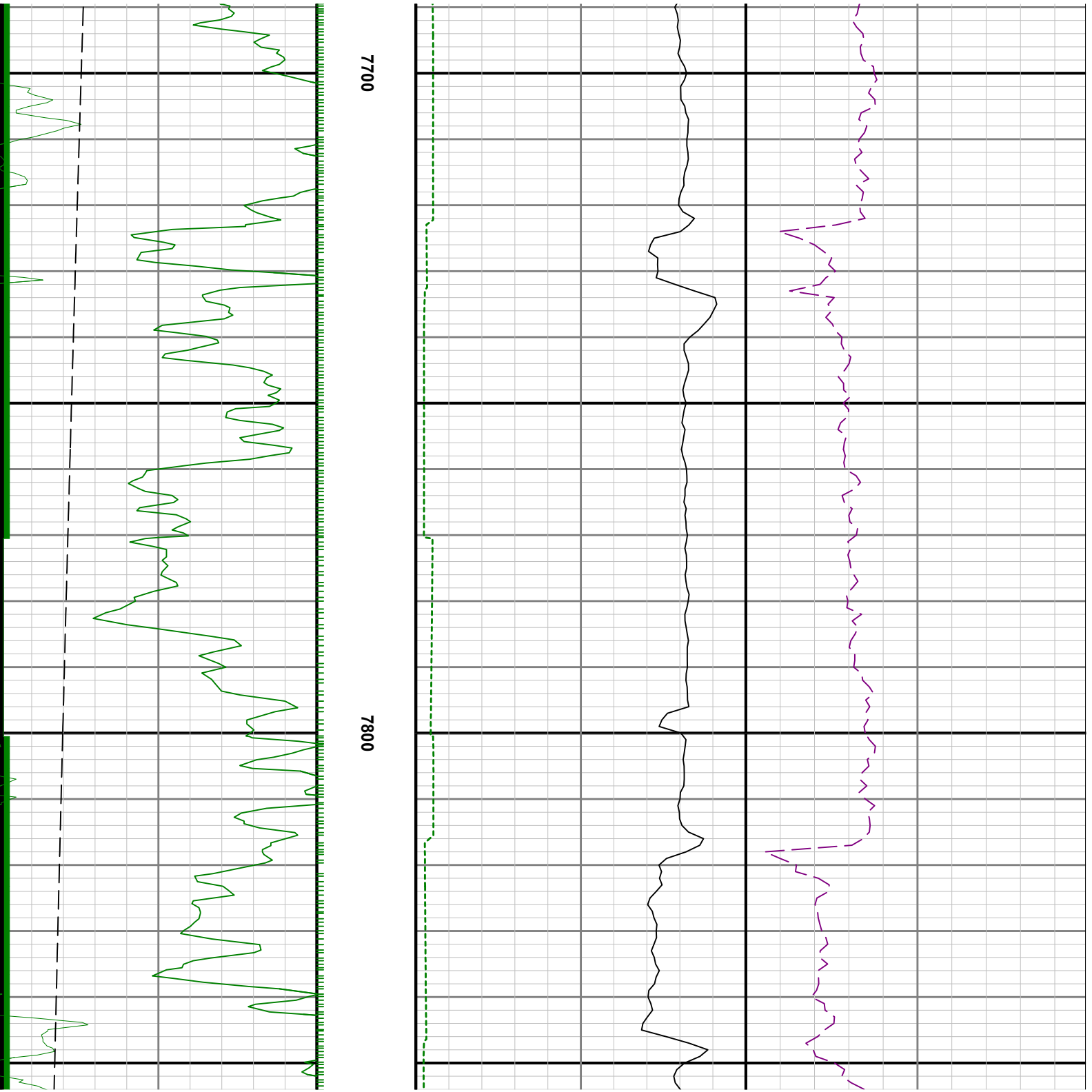


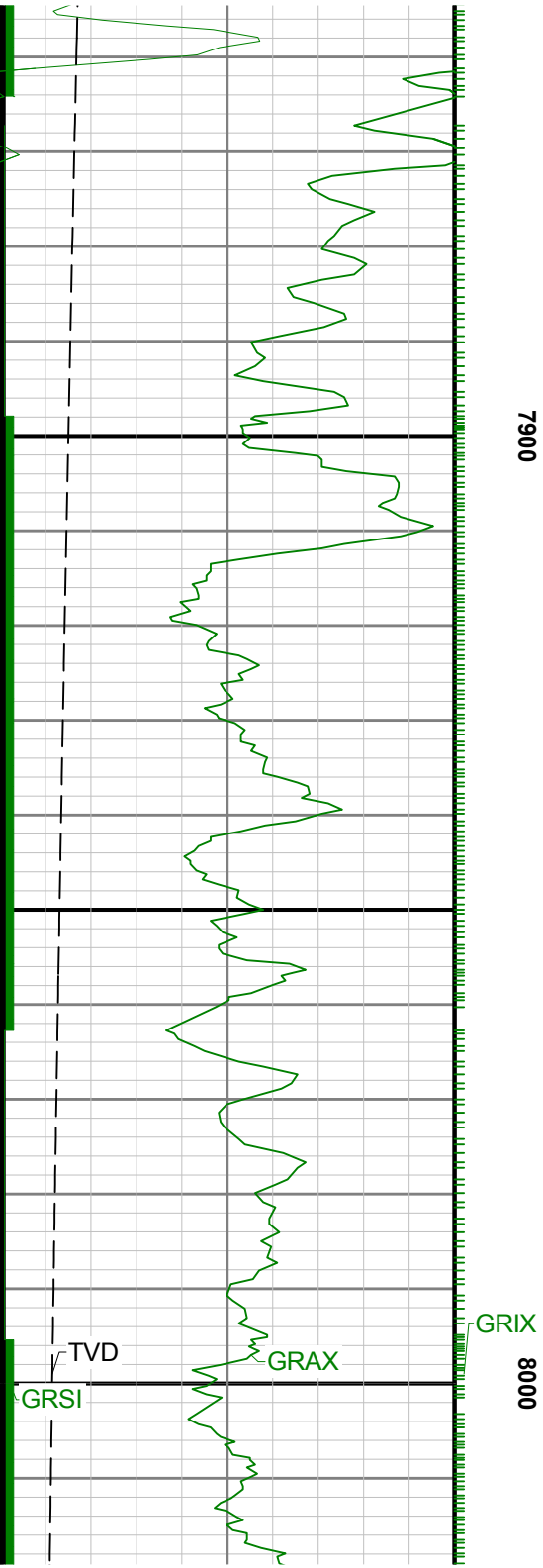


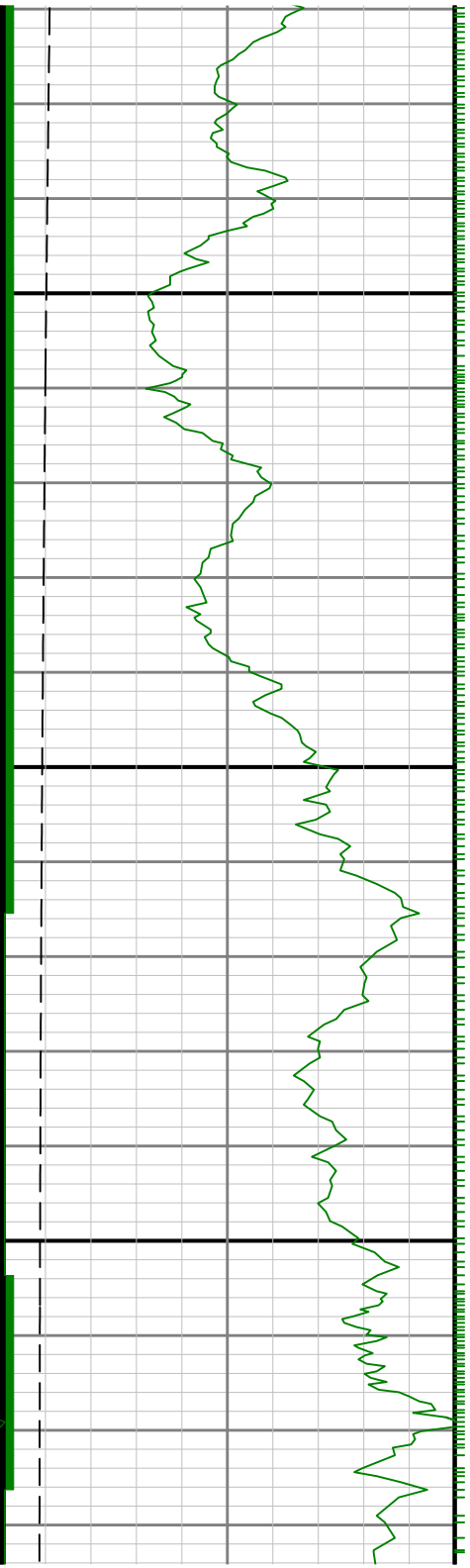


7600

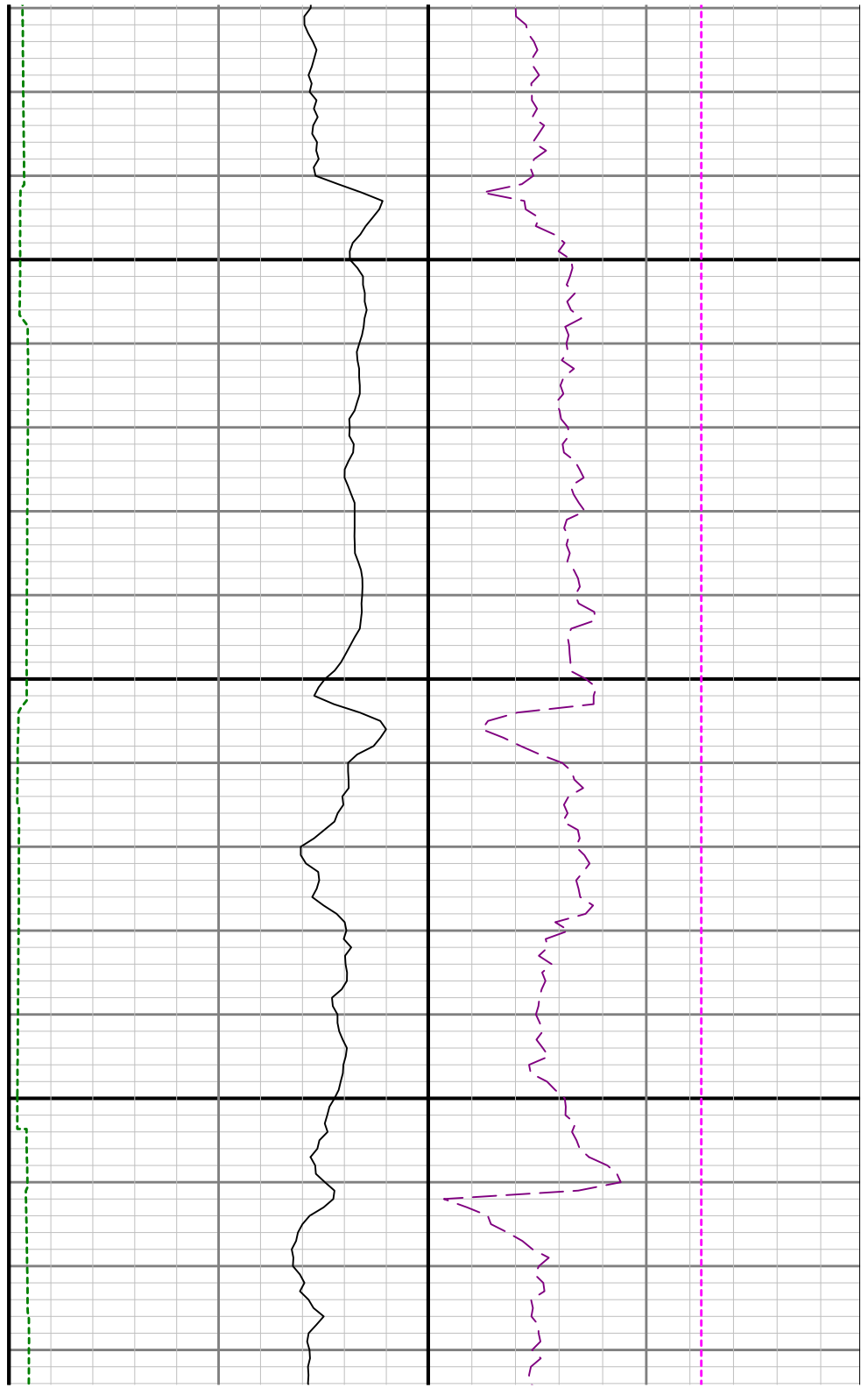


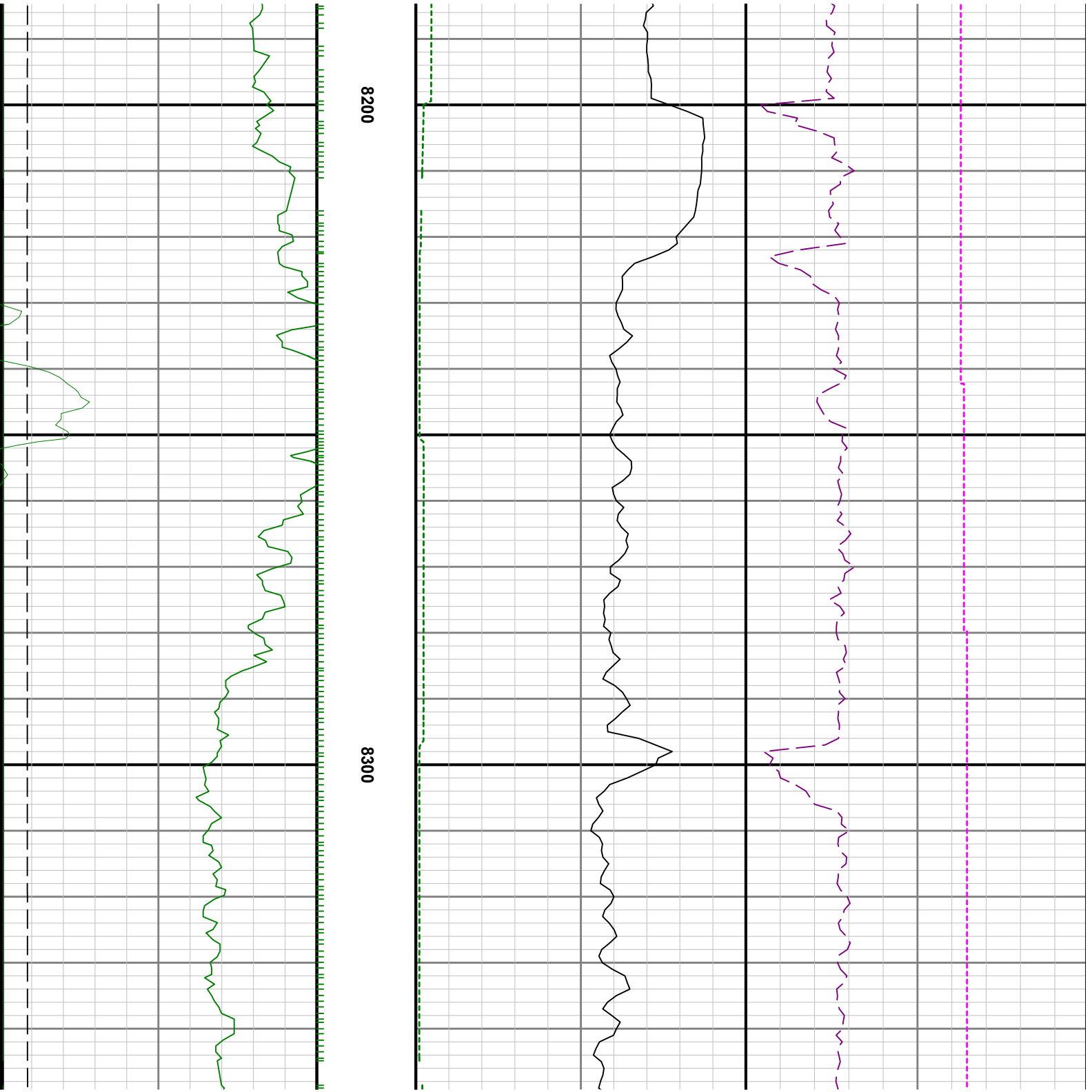


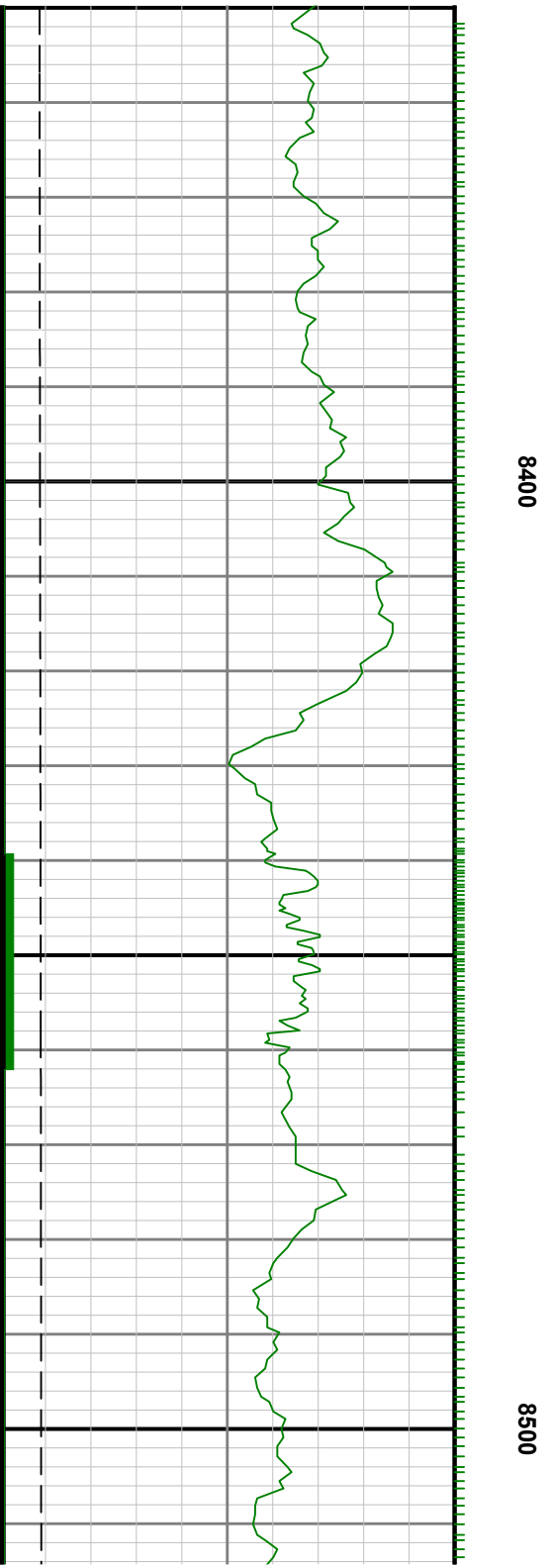


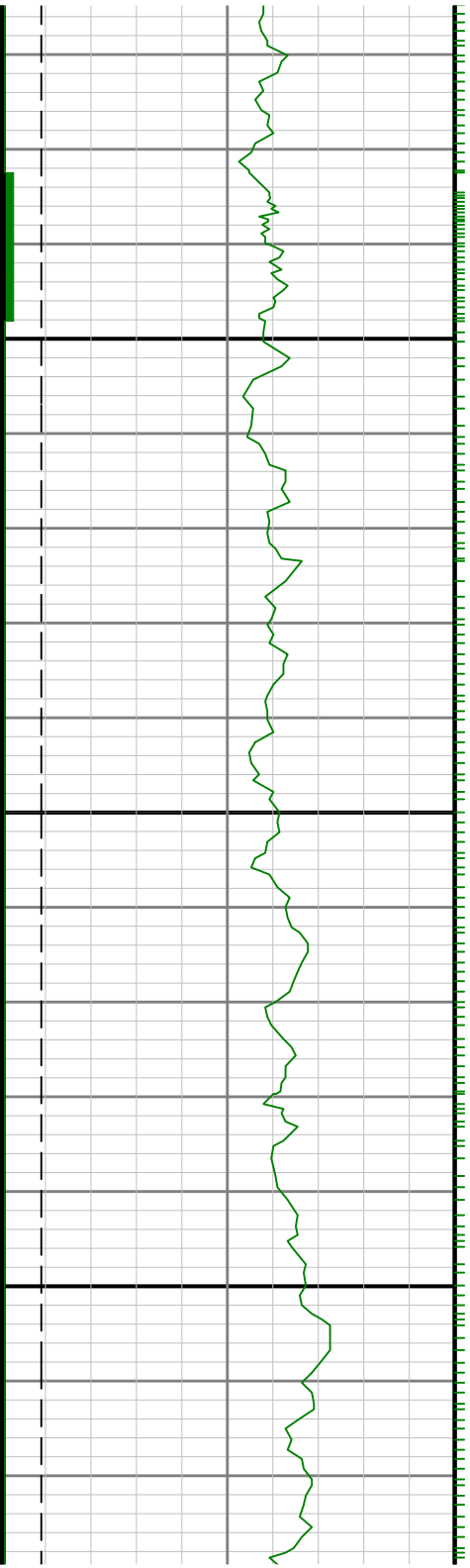


8100



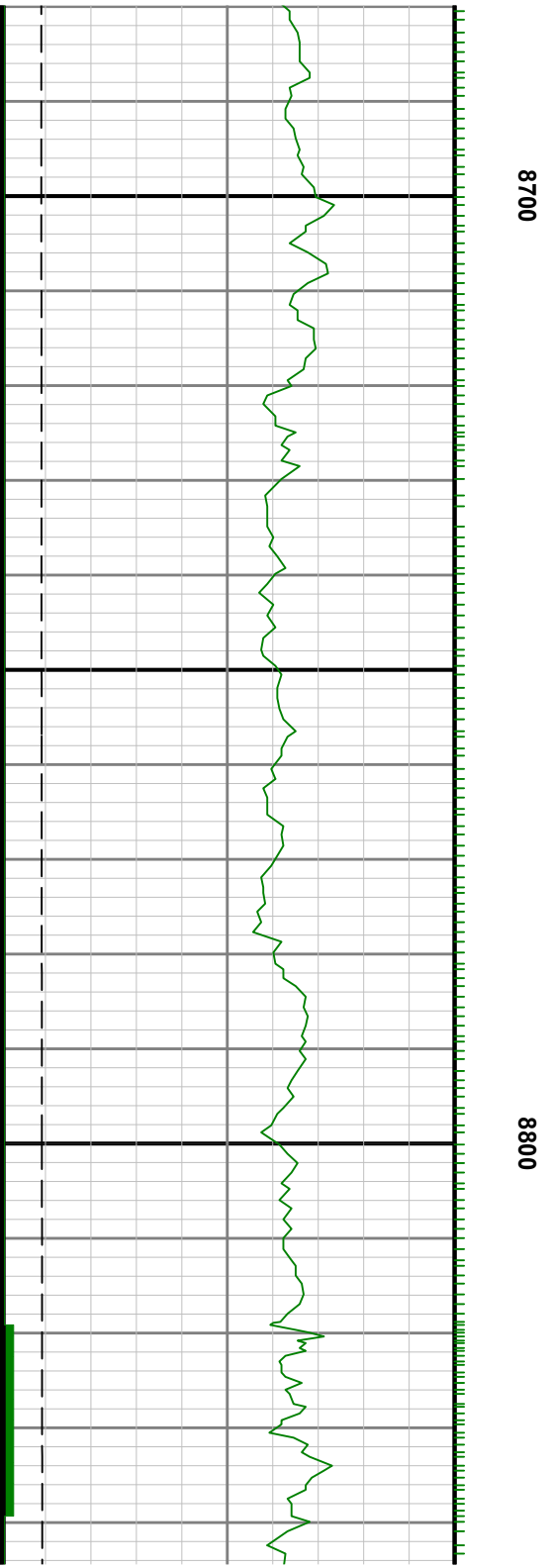
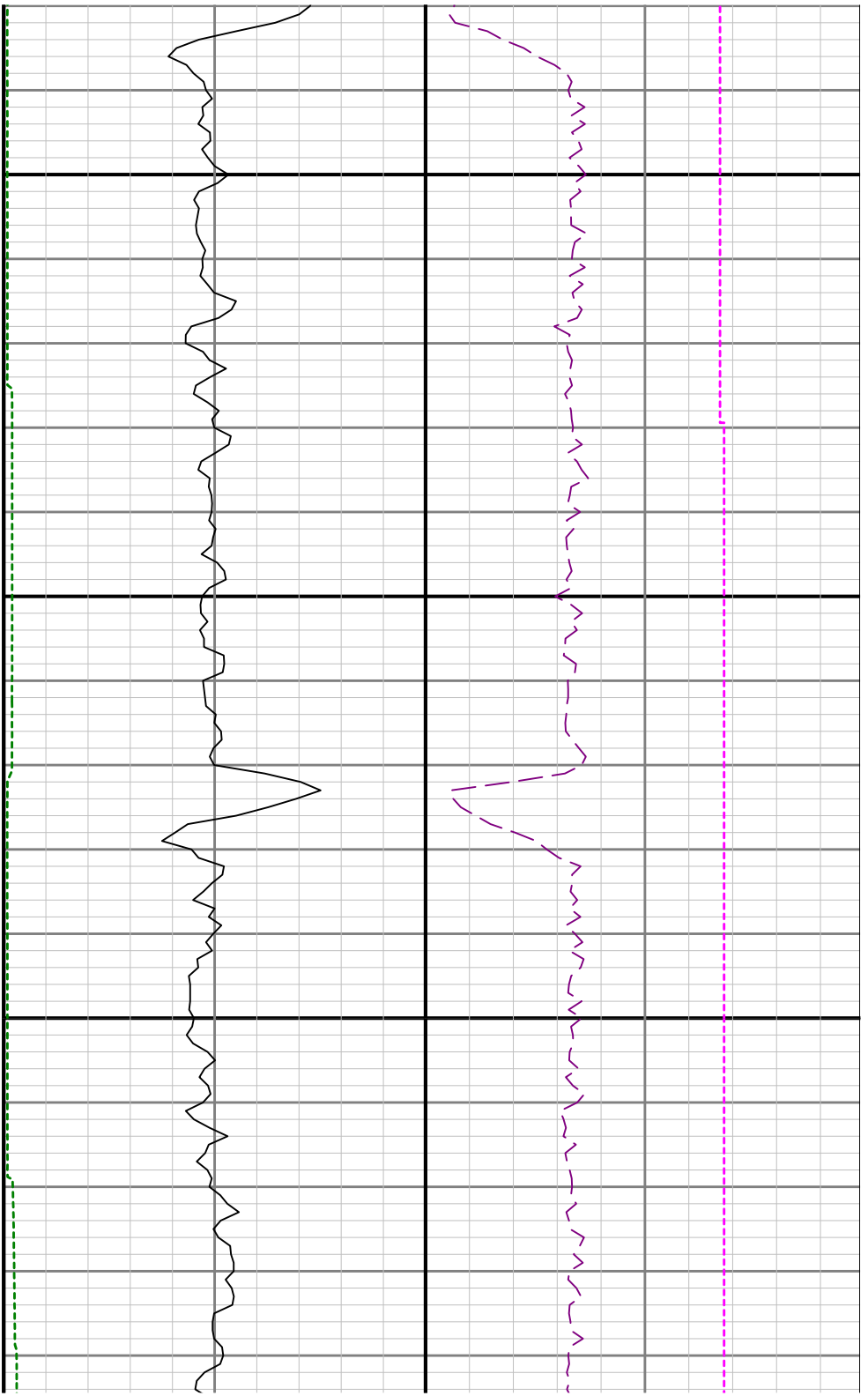


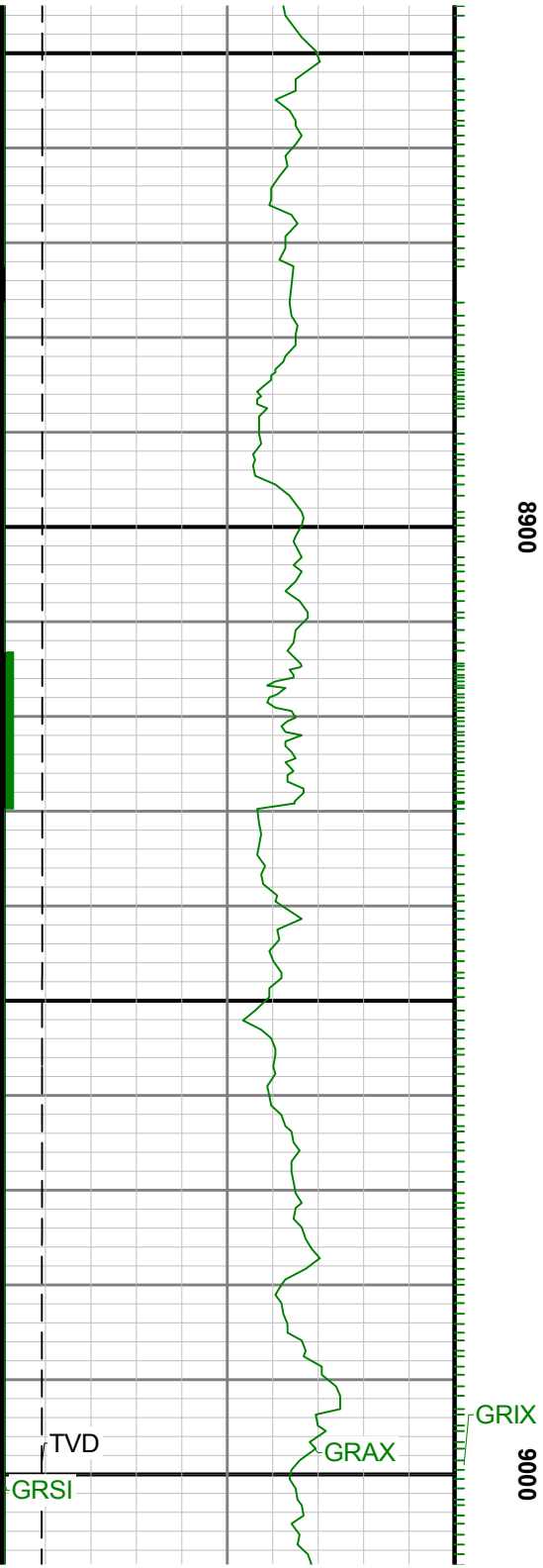


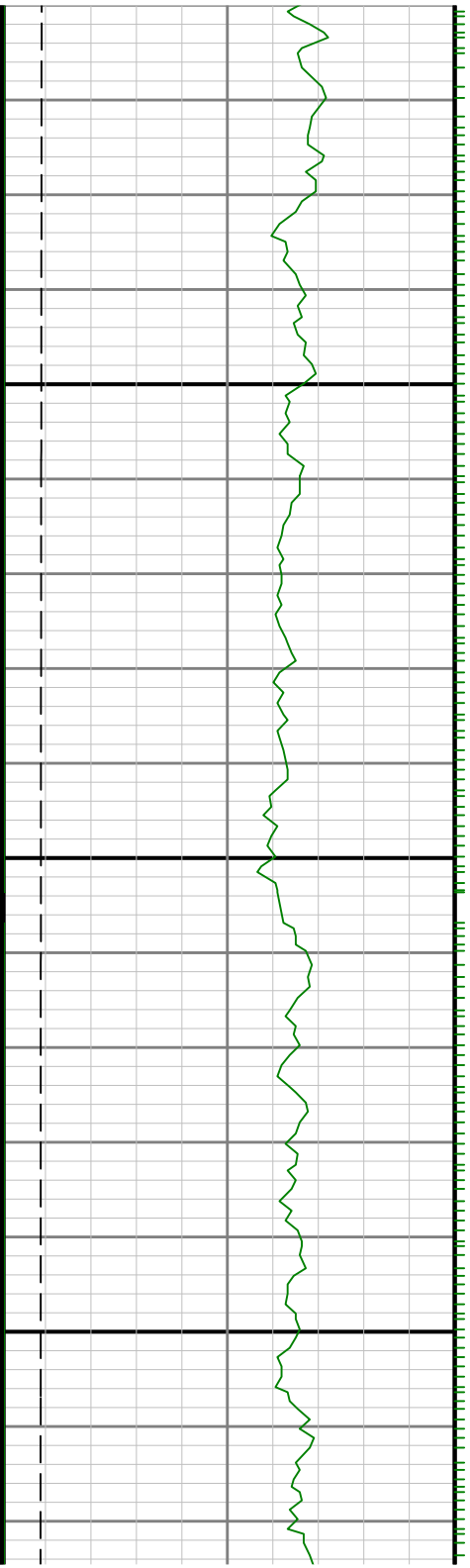


0098

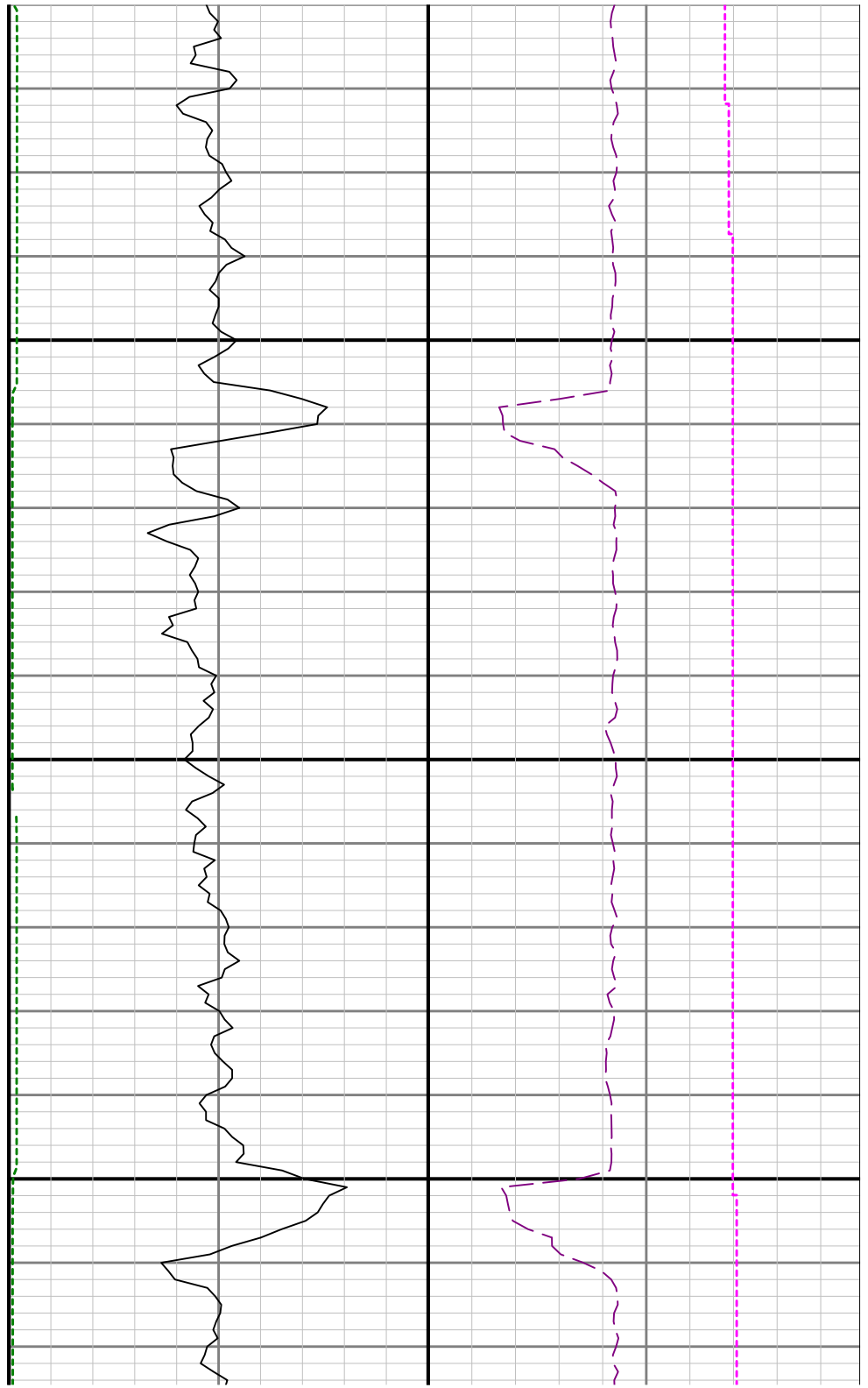




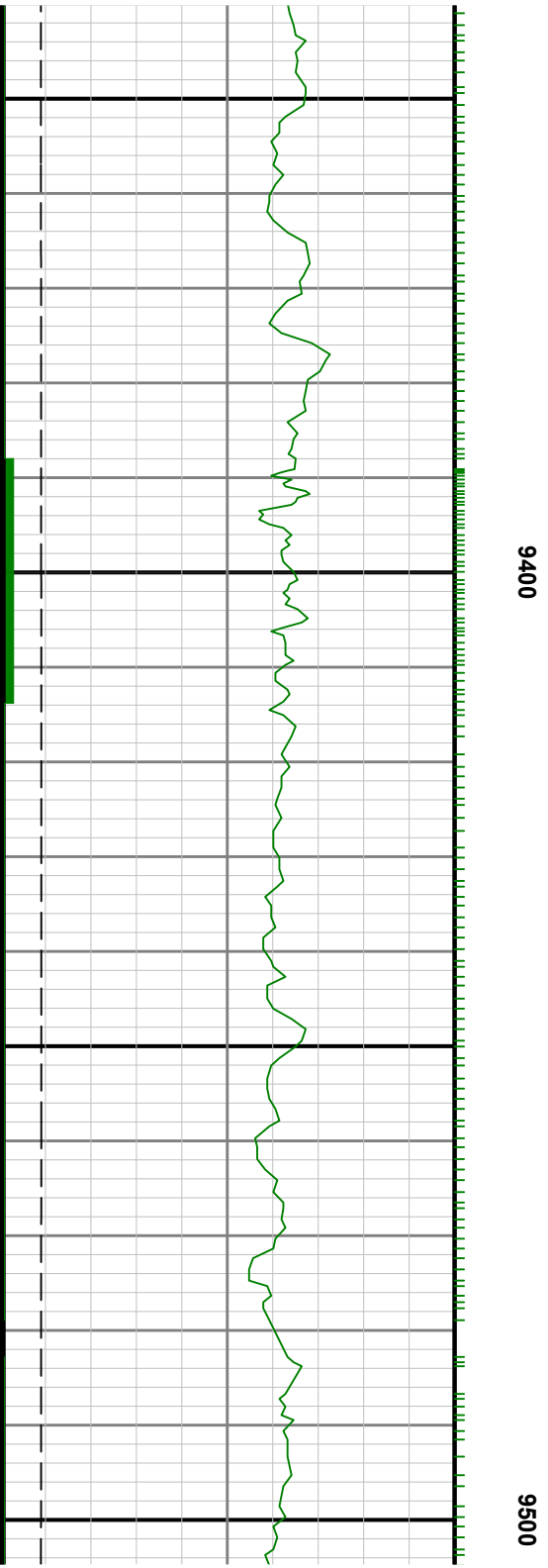
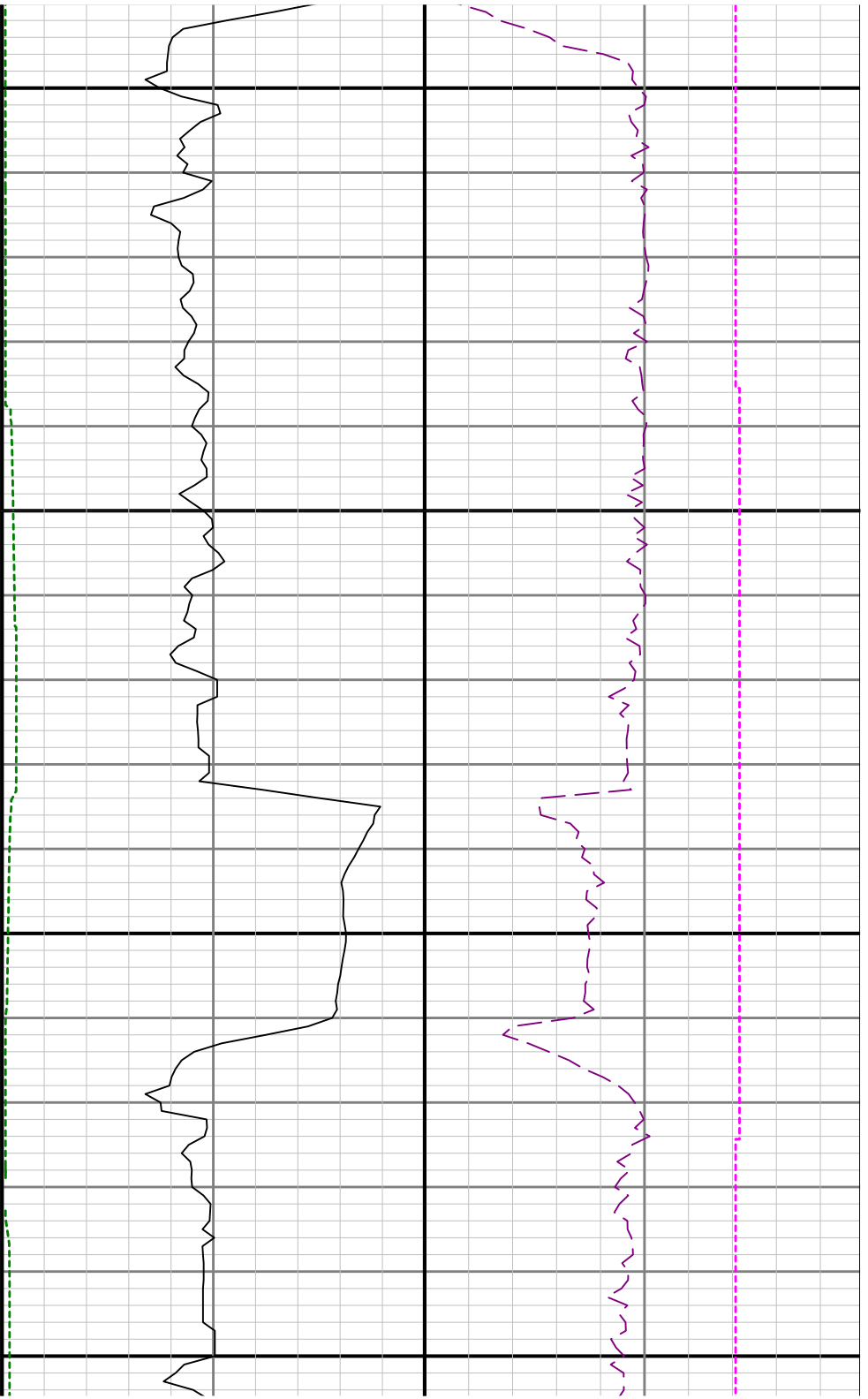


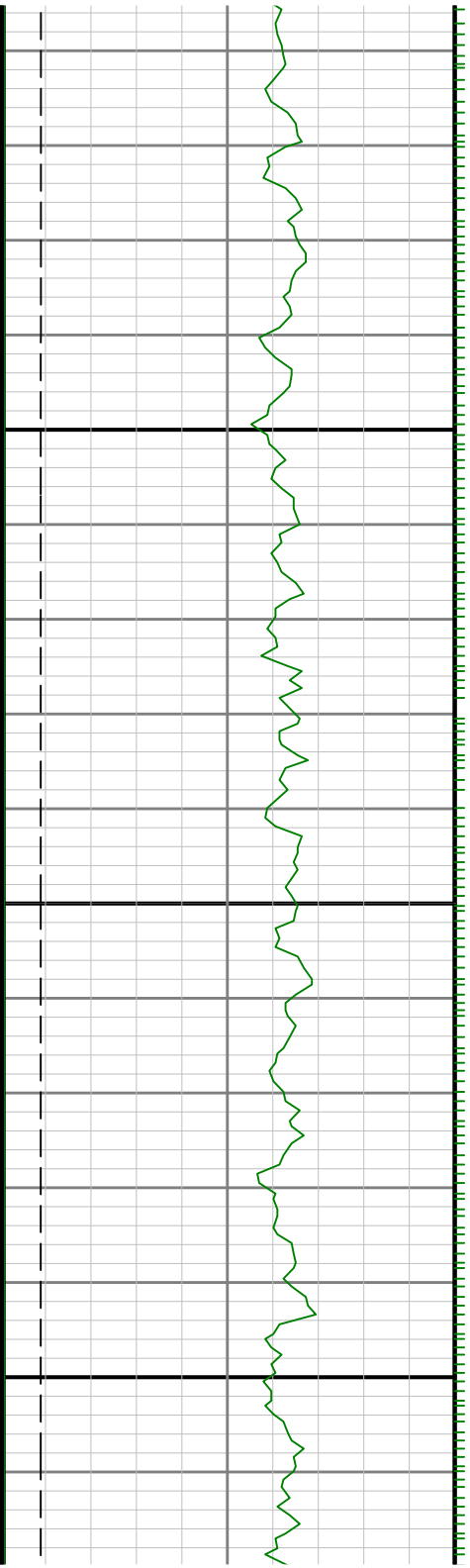


9100

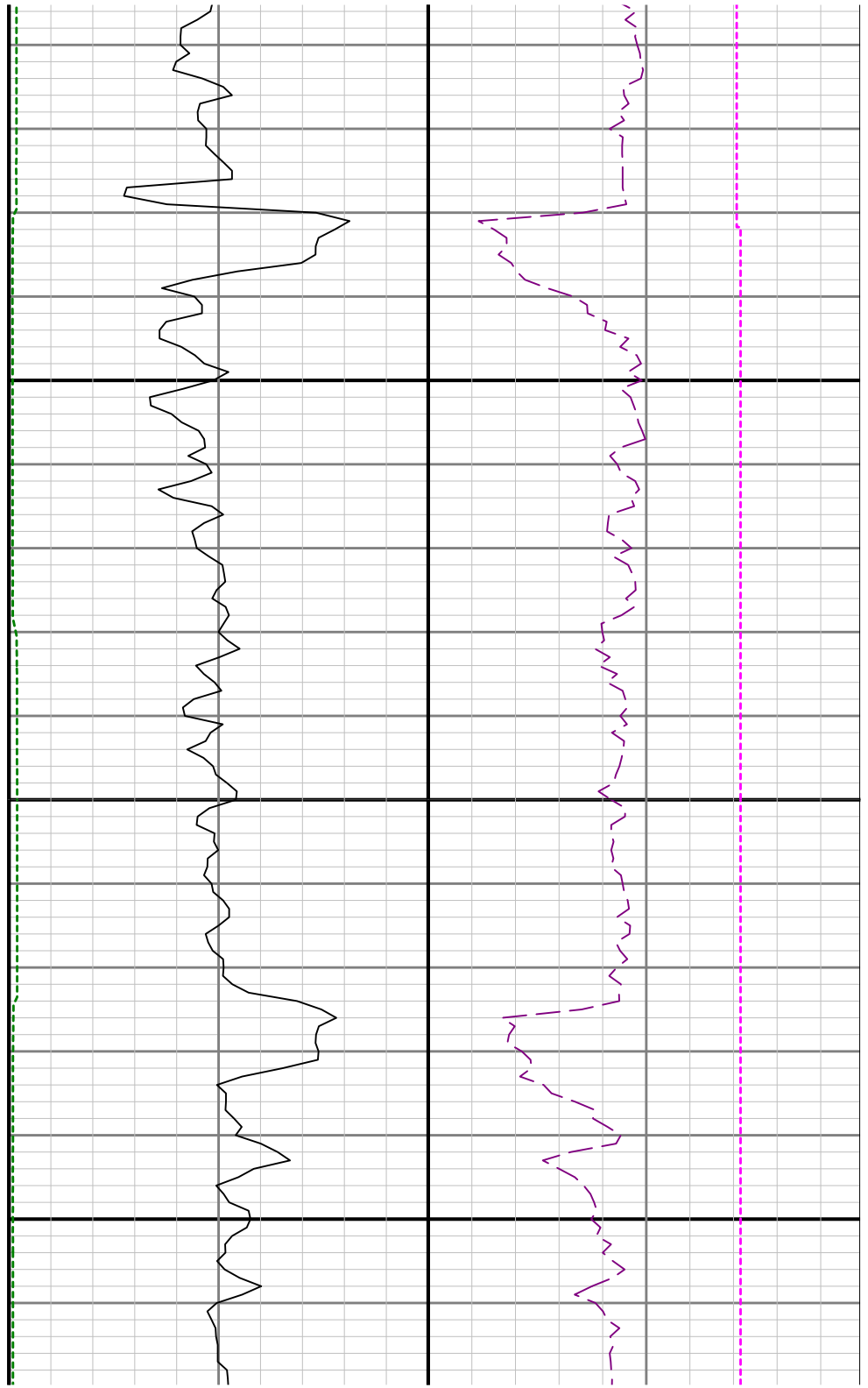




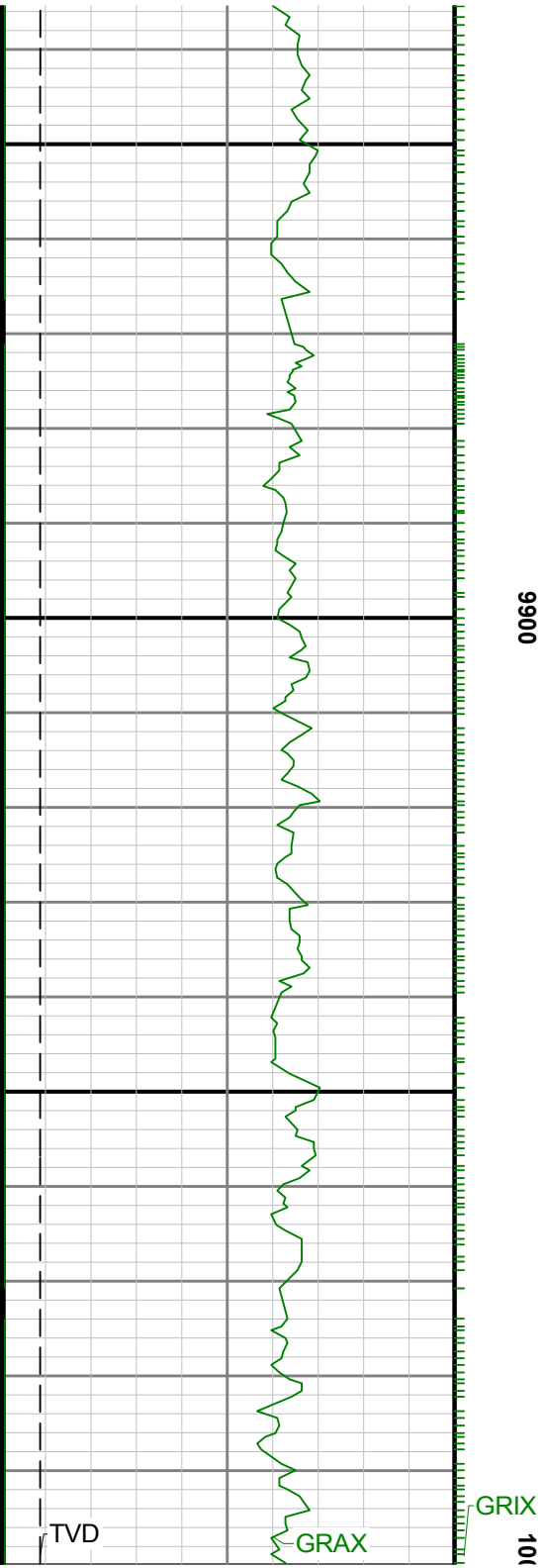


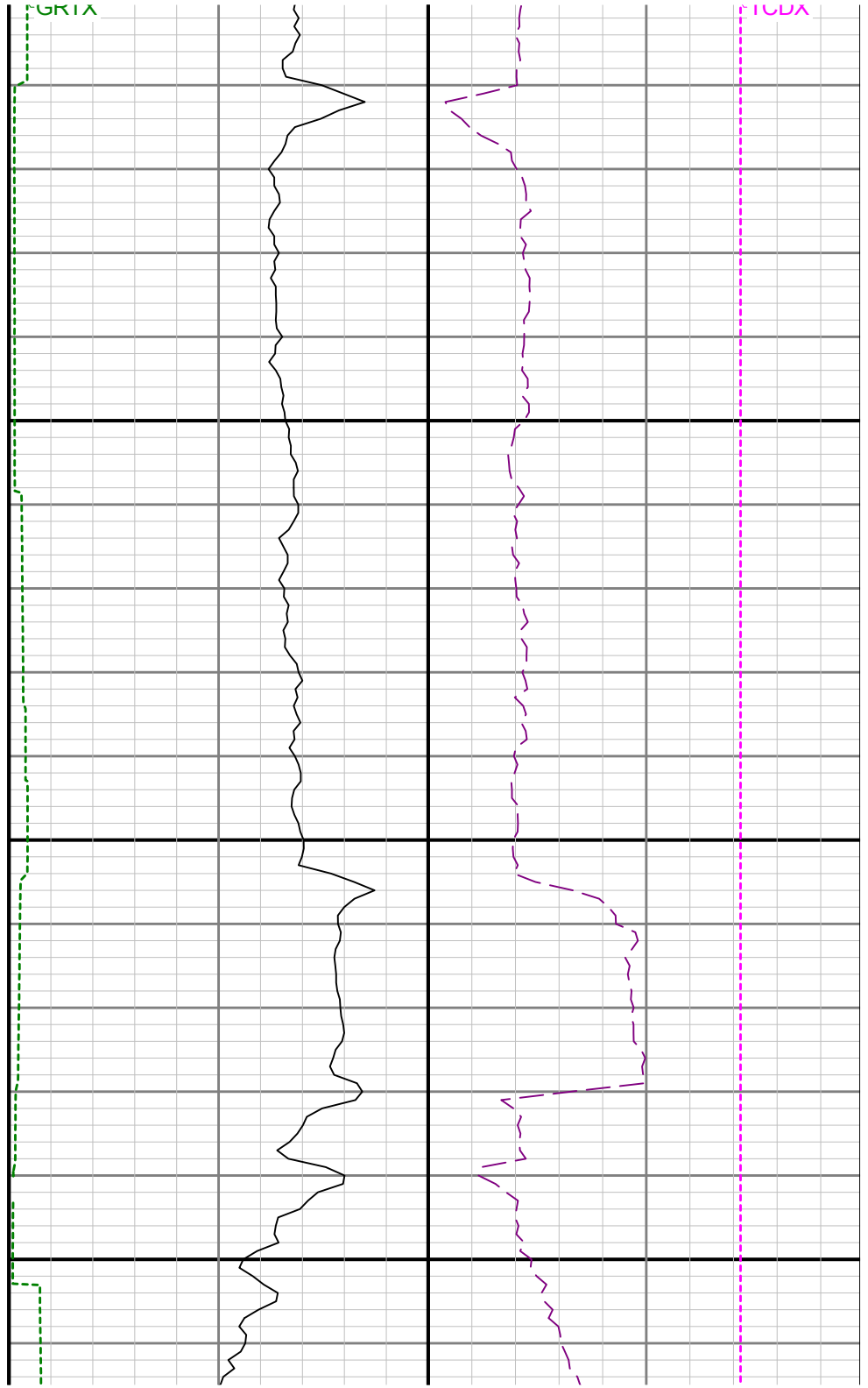
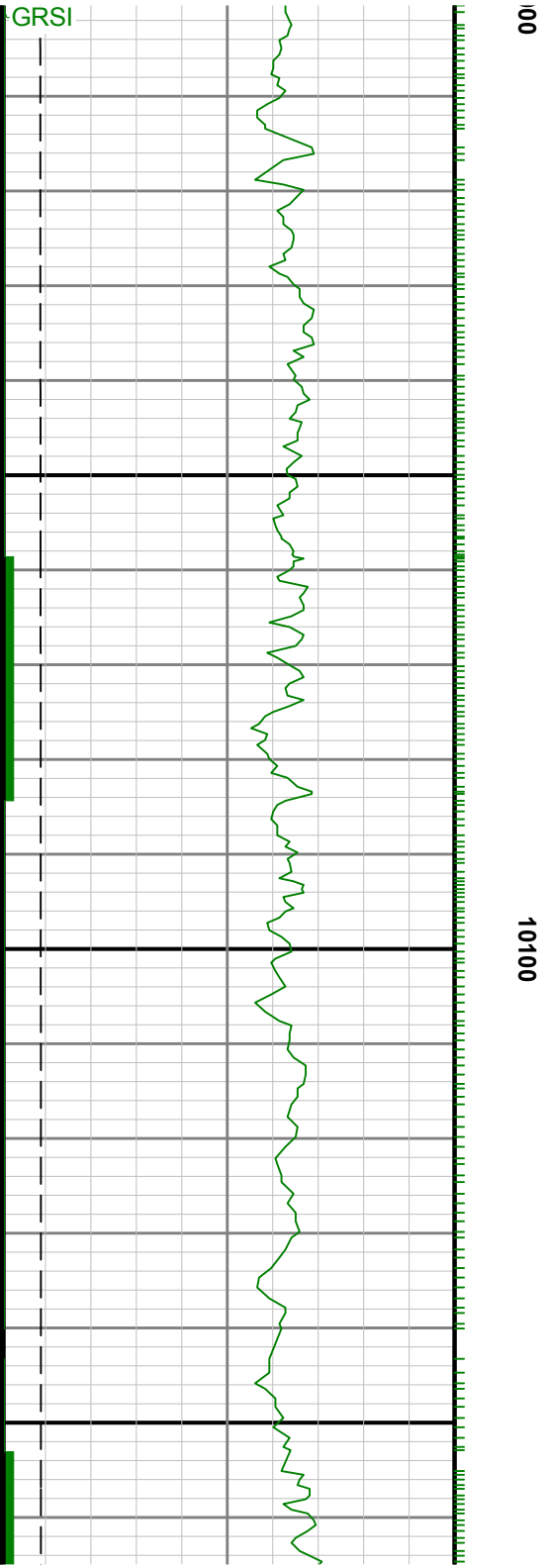


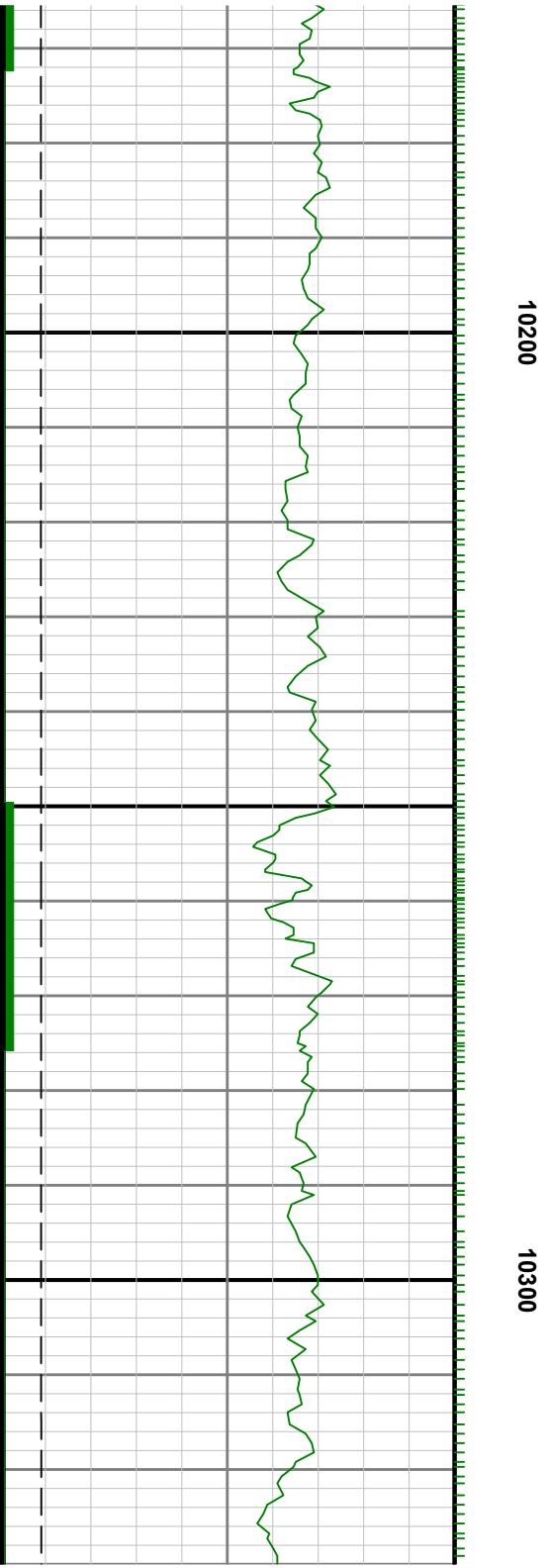
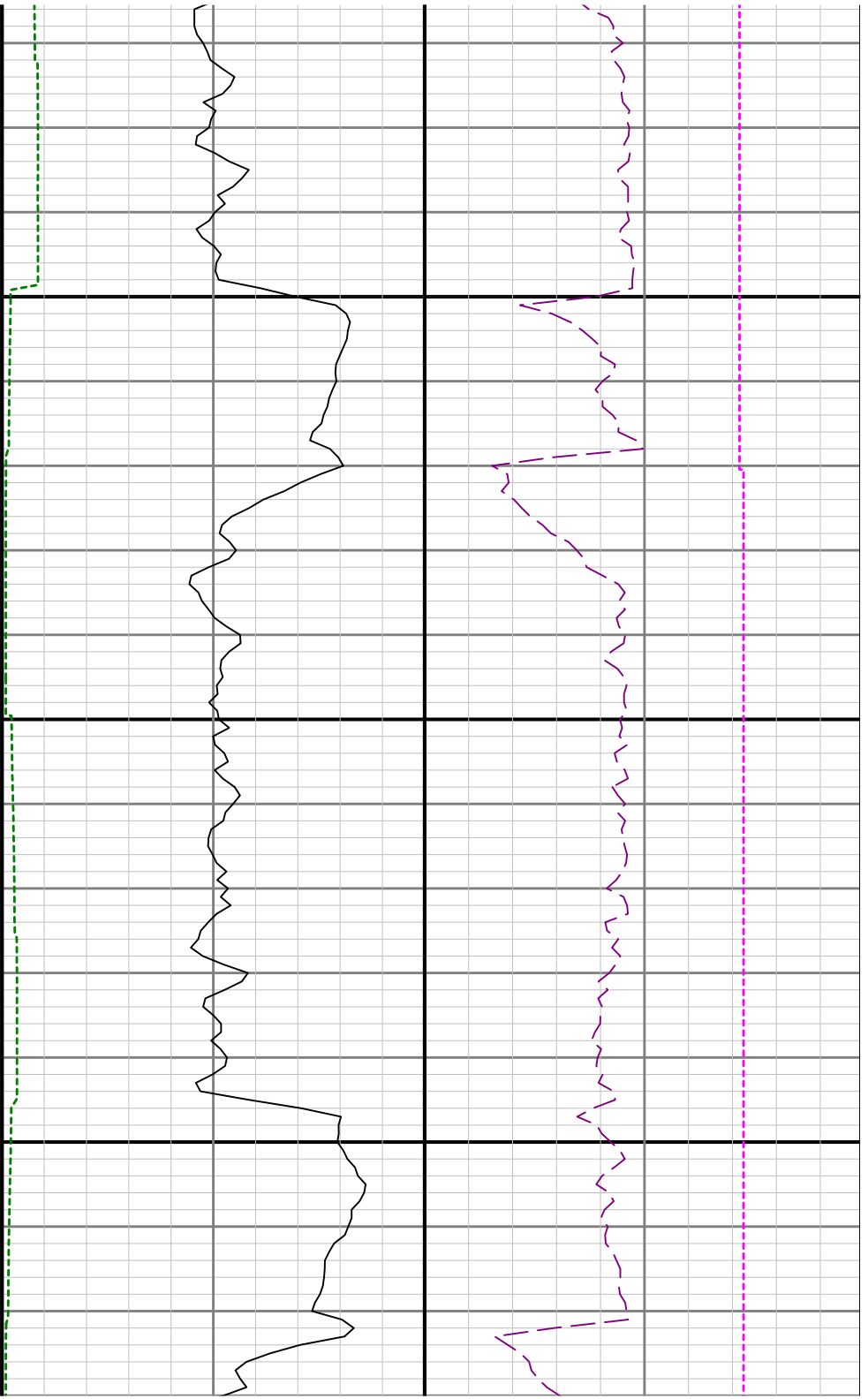
0096

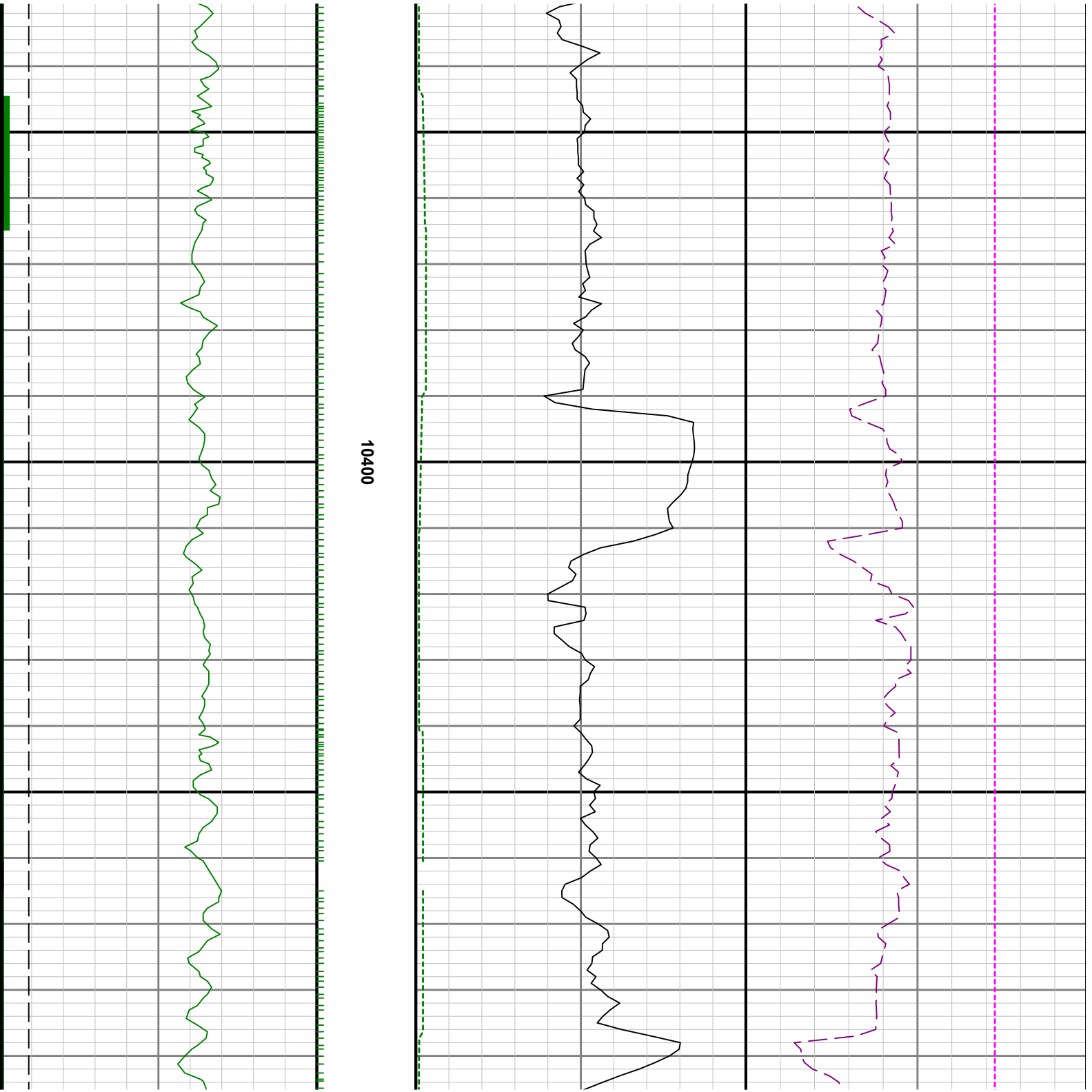


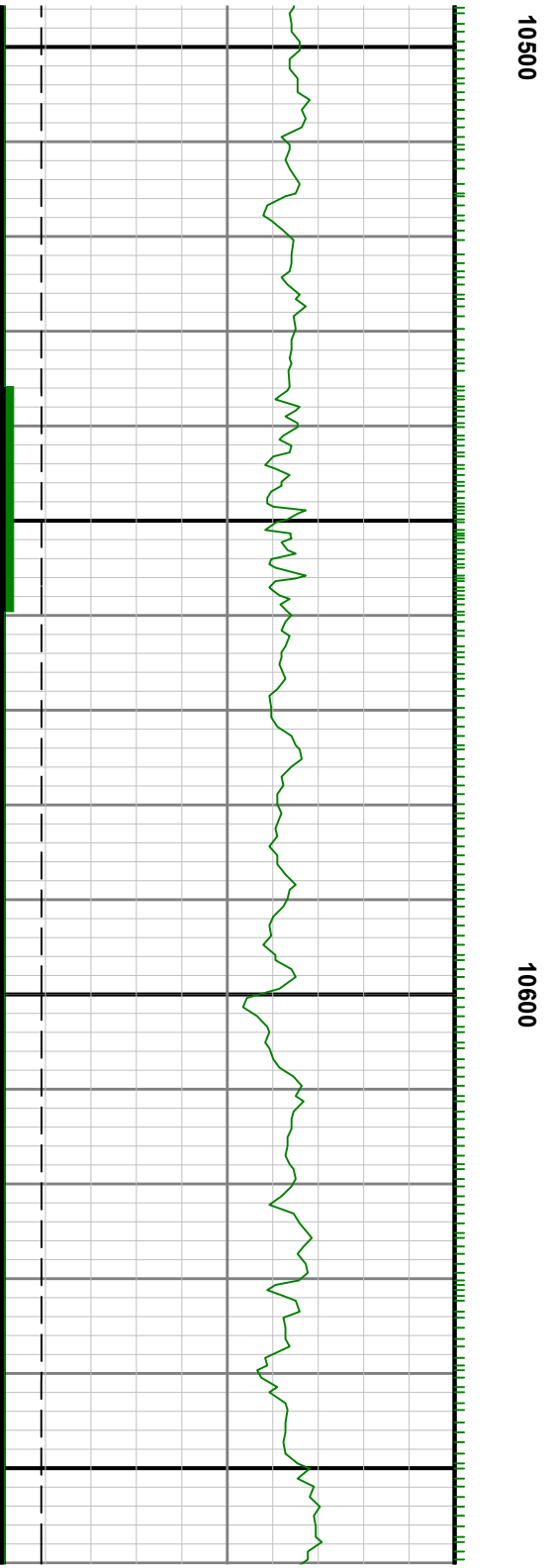


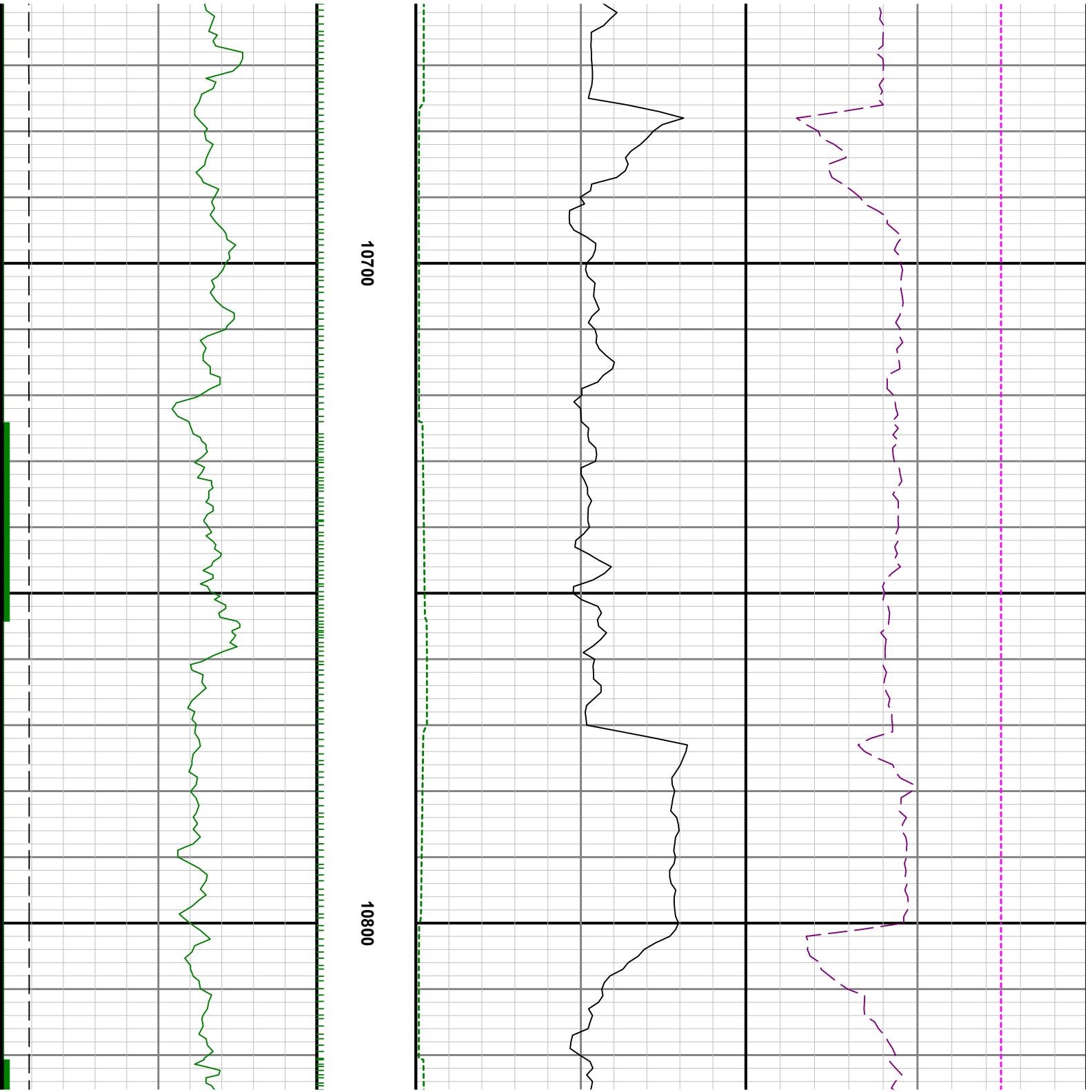


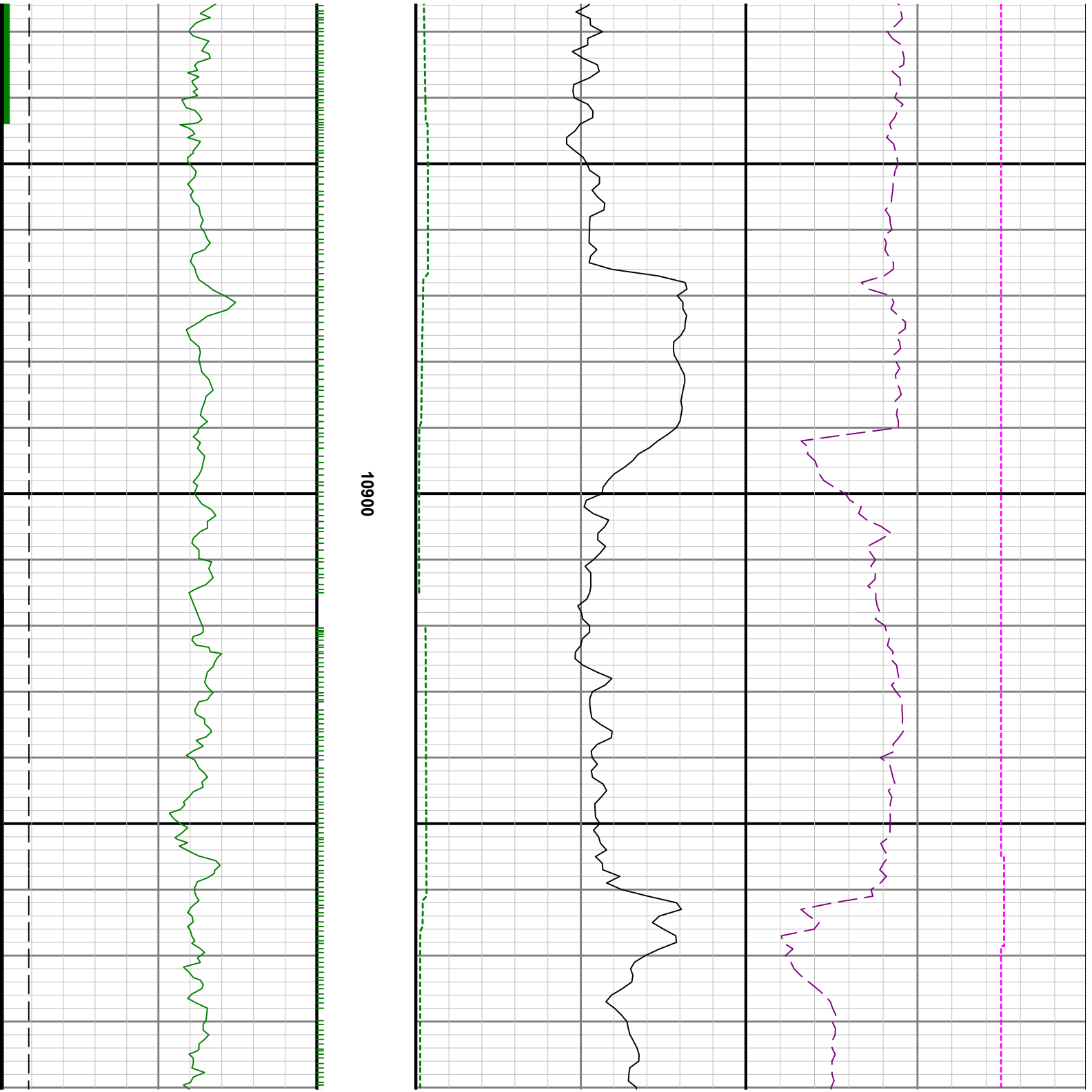


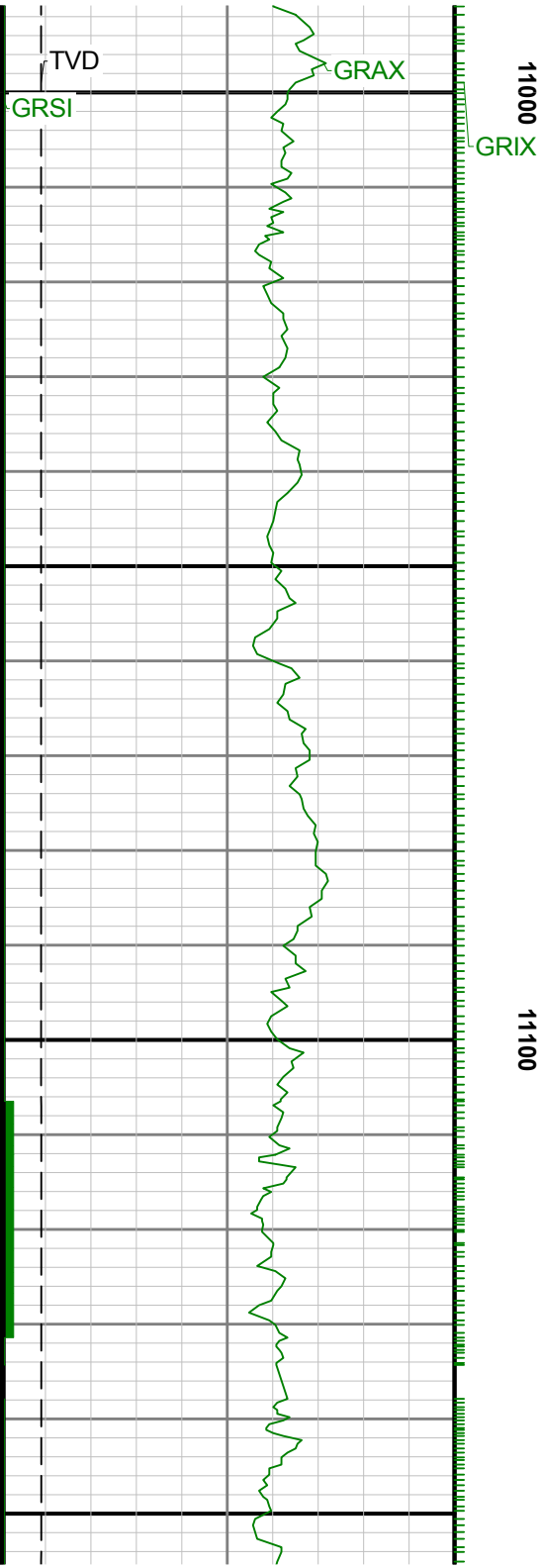


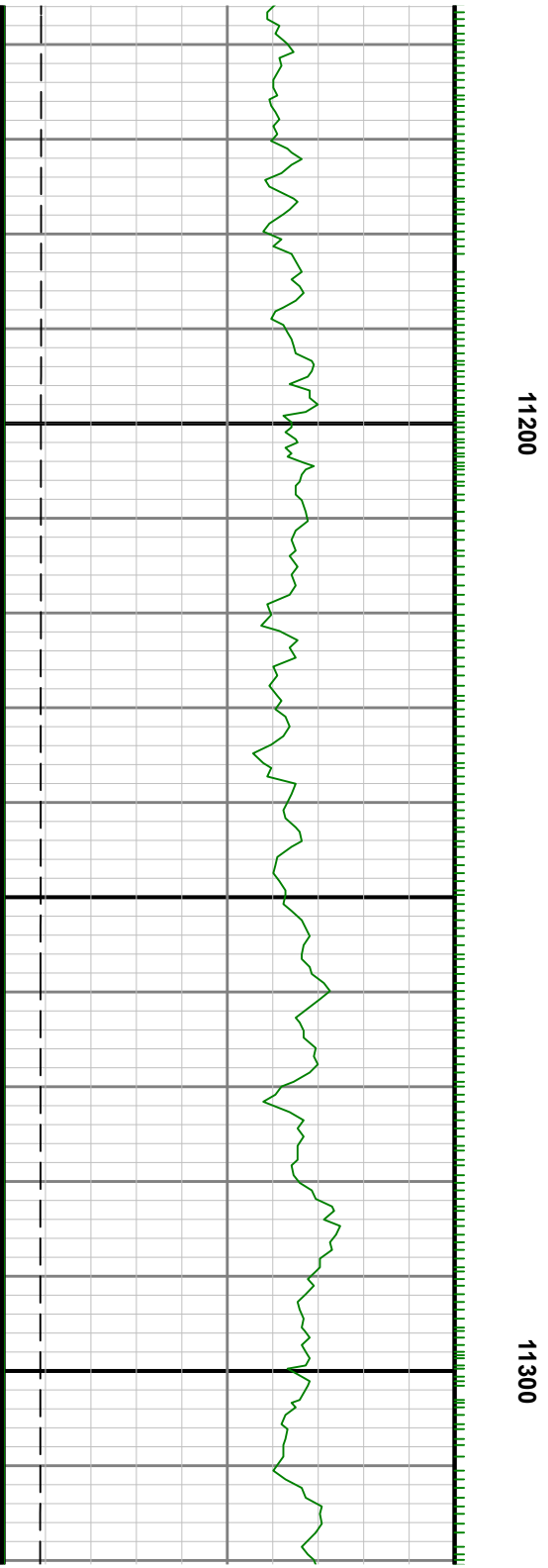


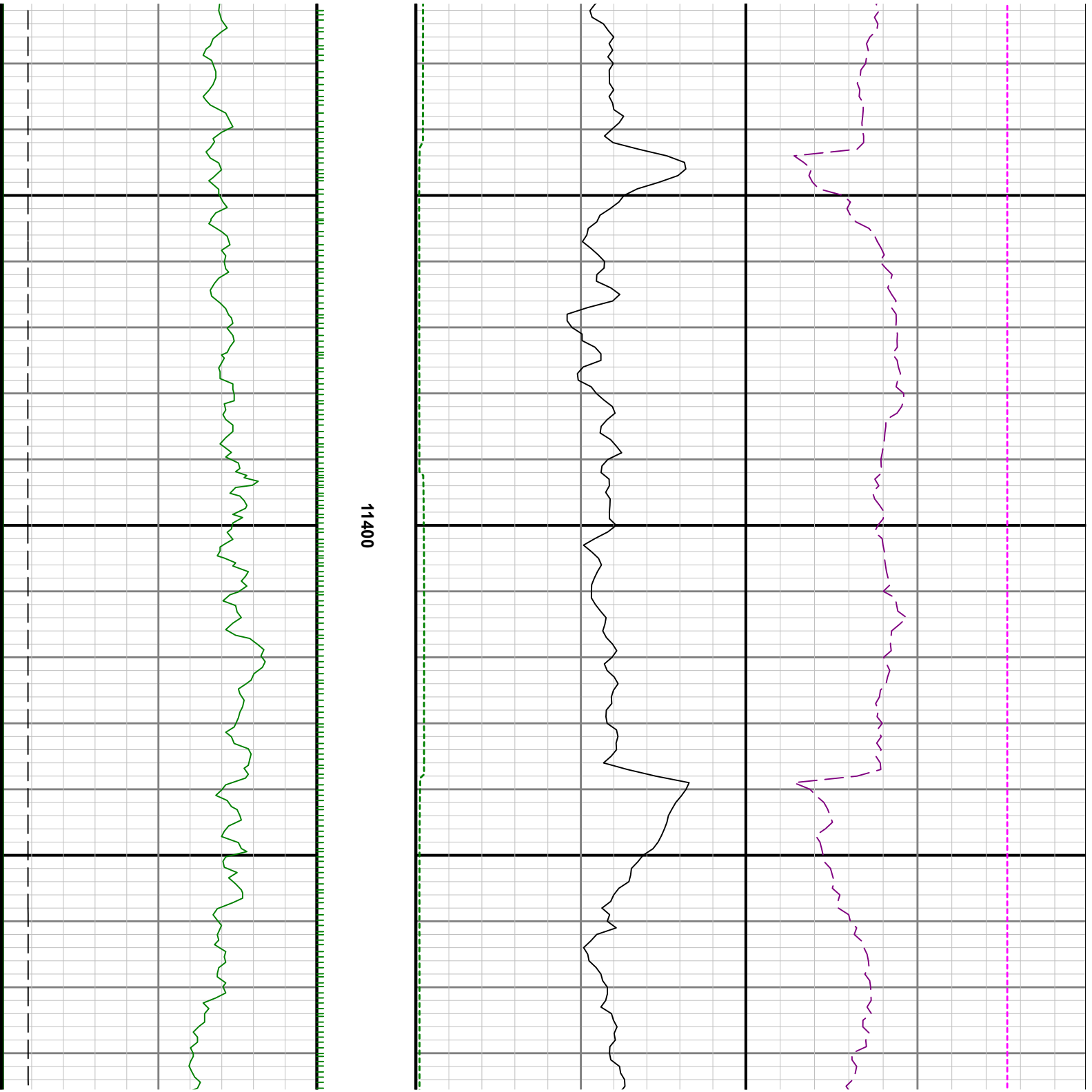


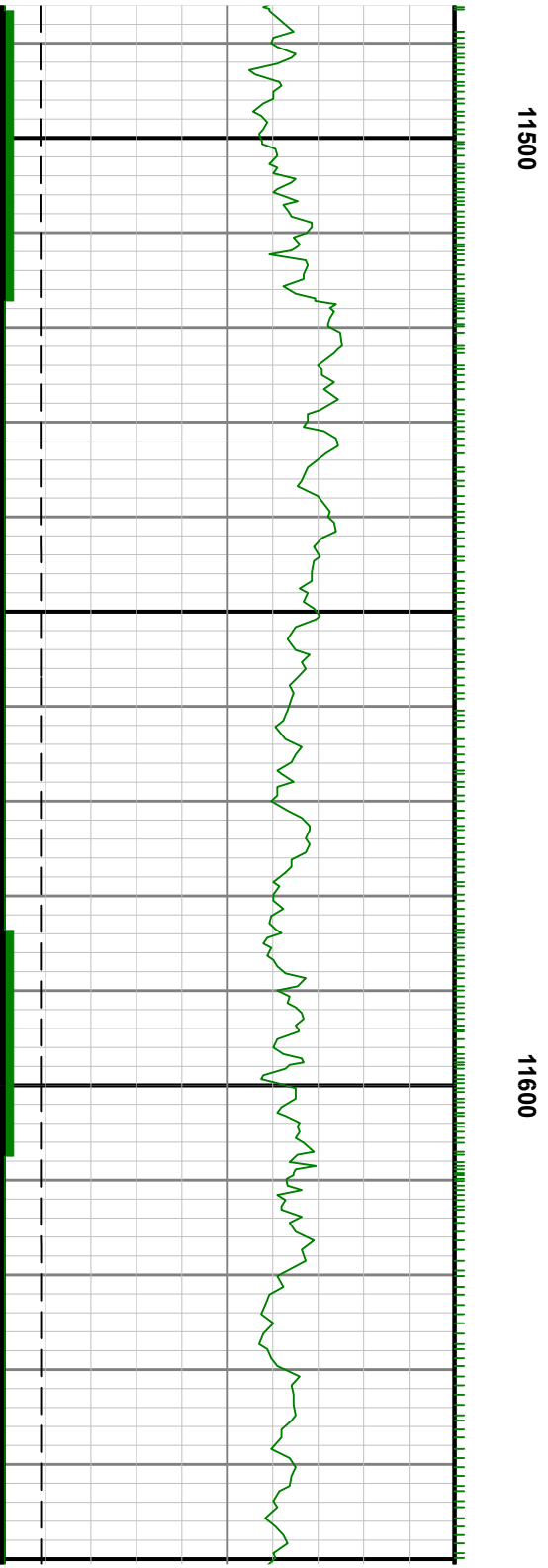
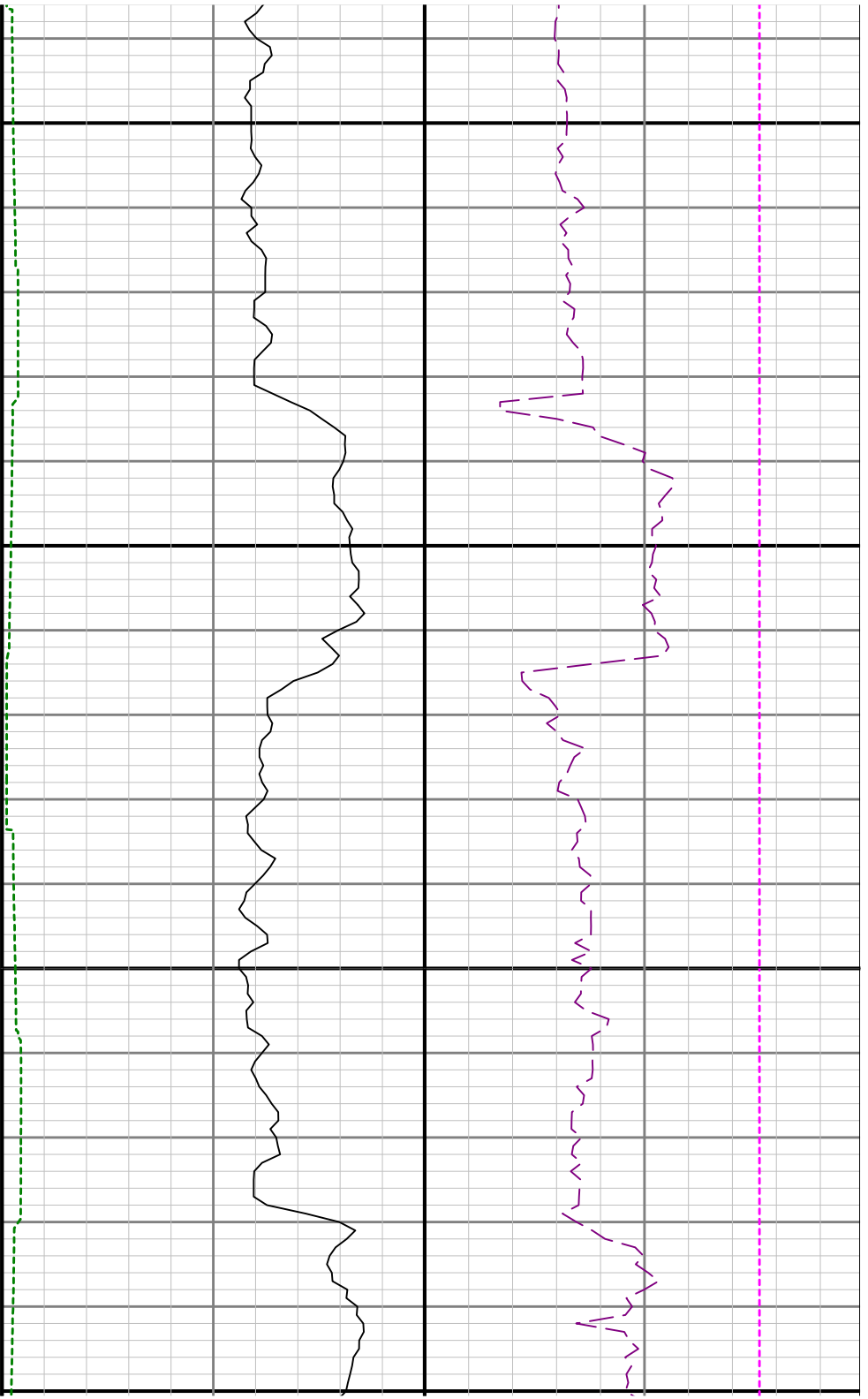


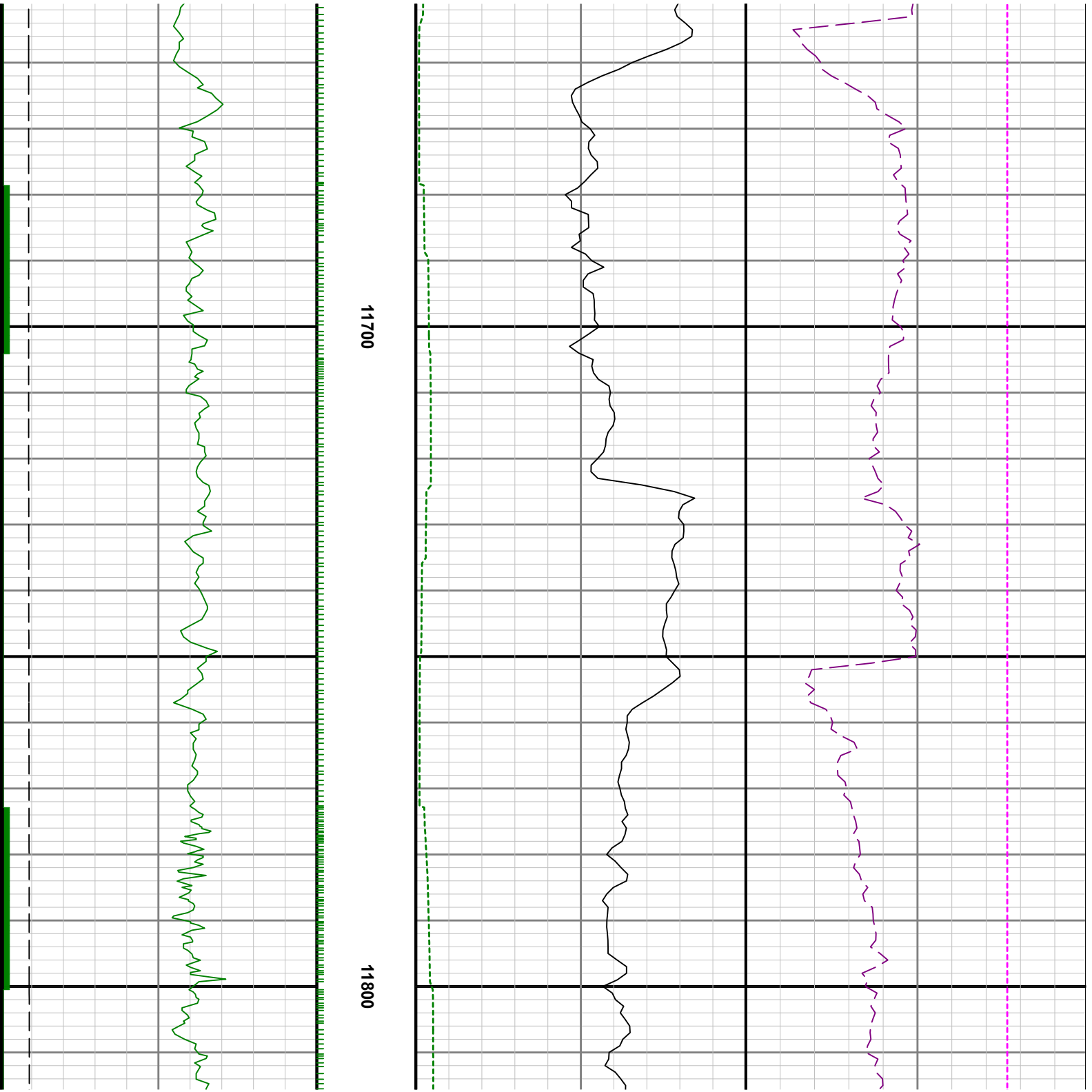




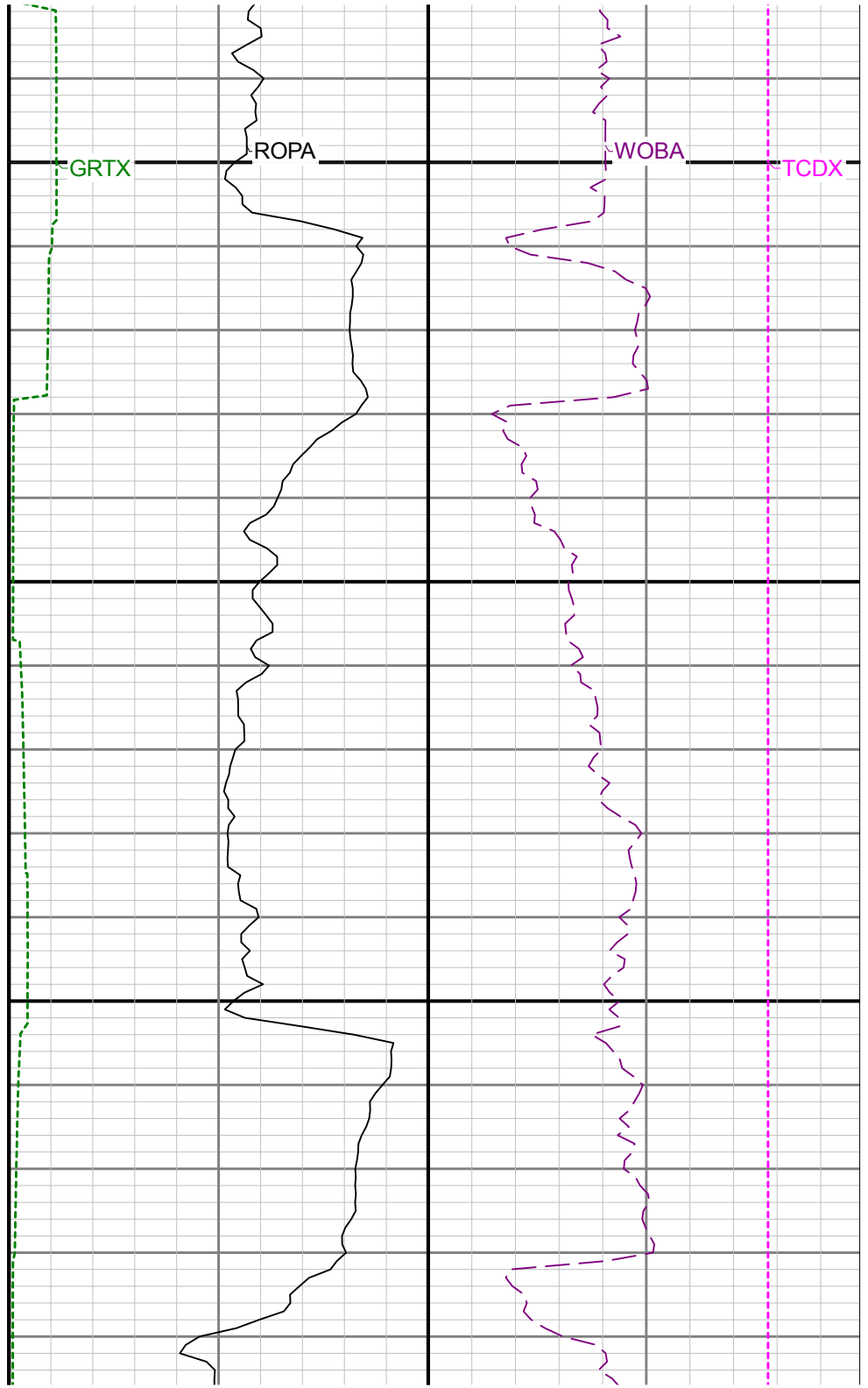
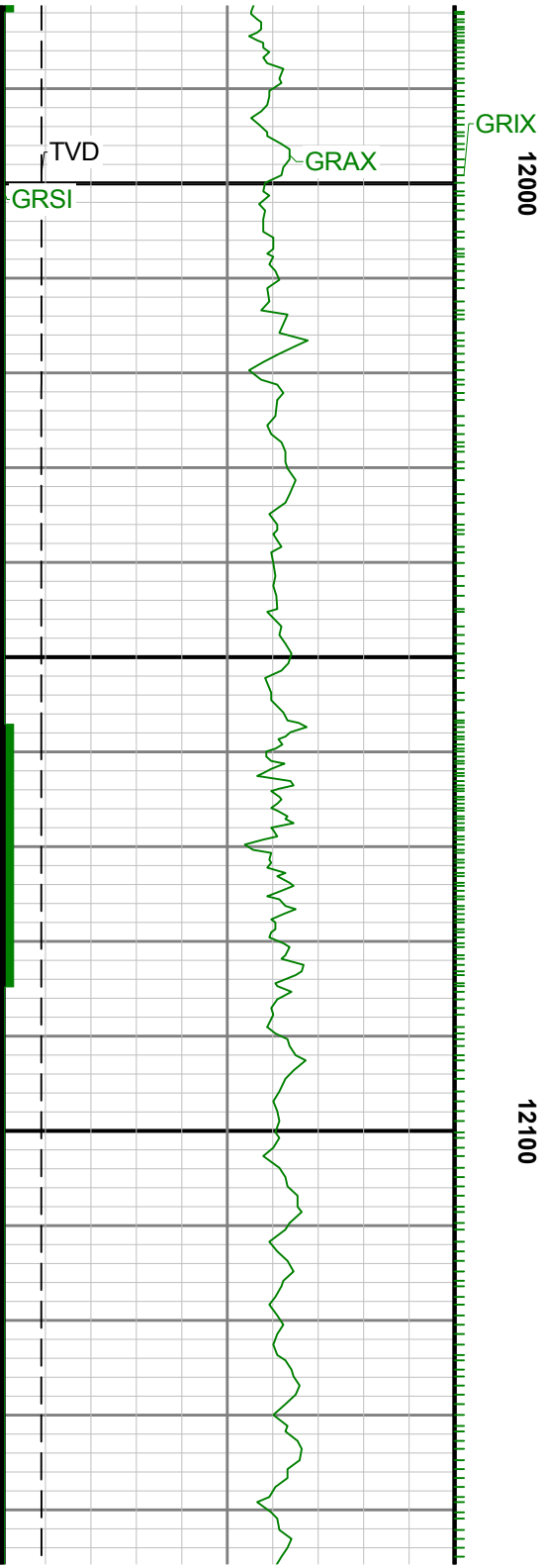


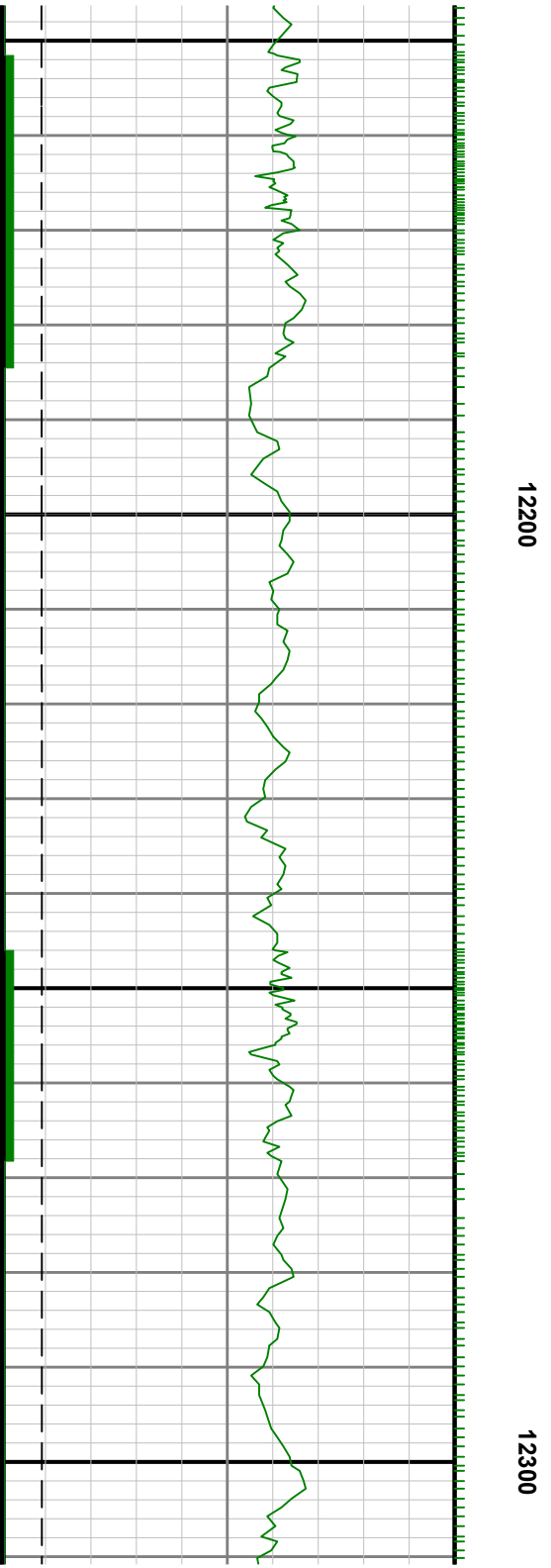




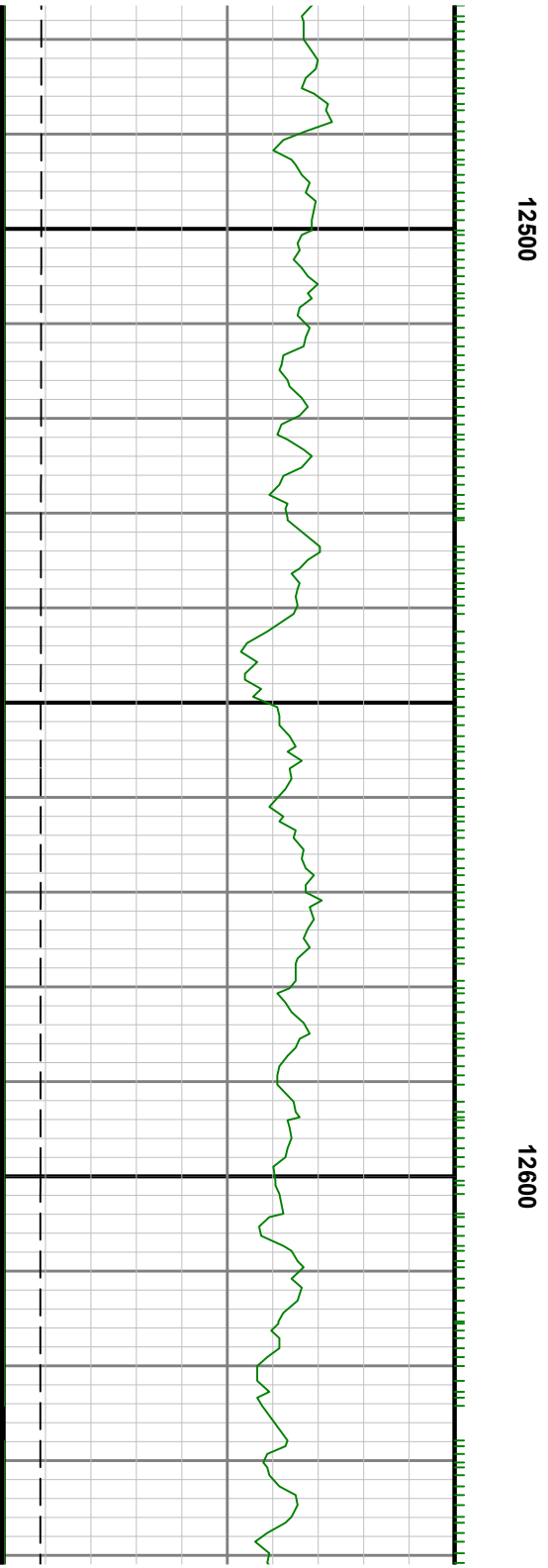
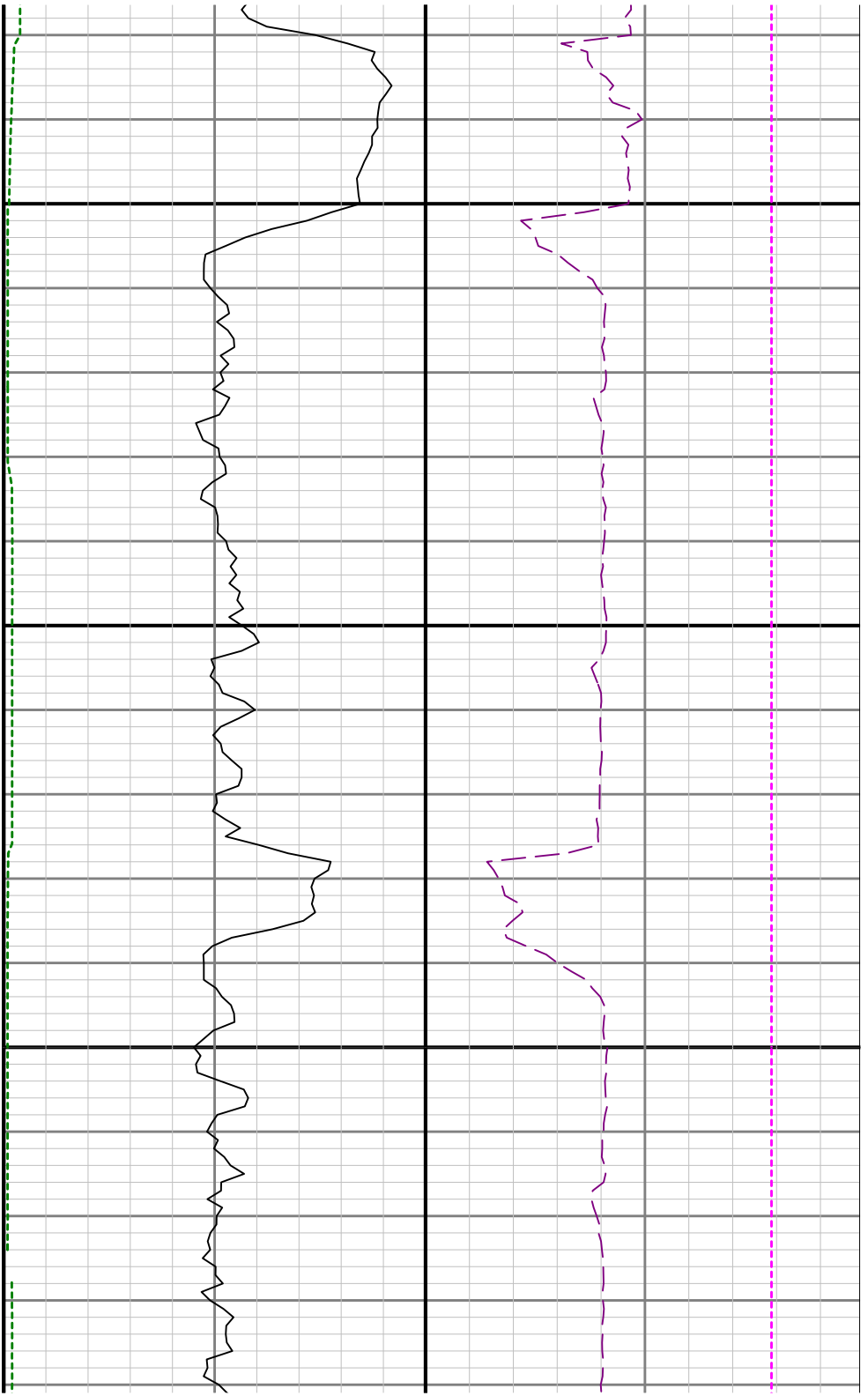


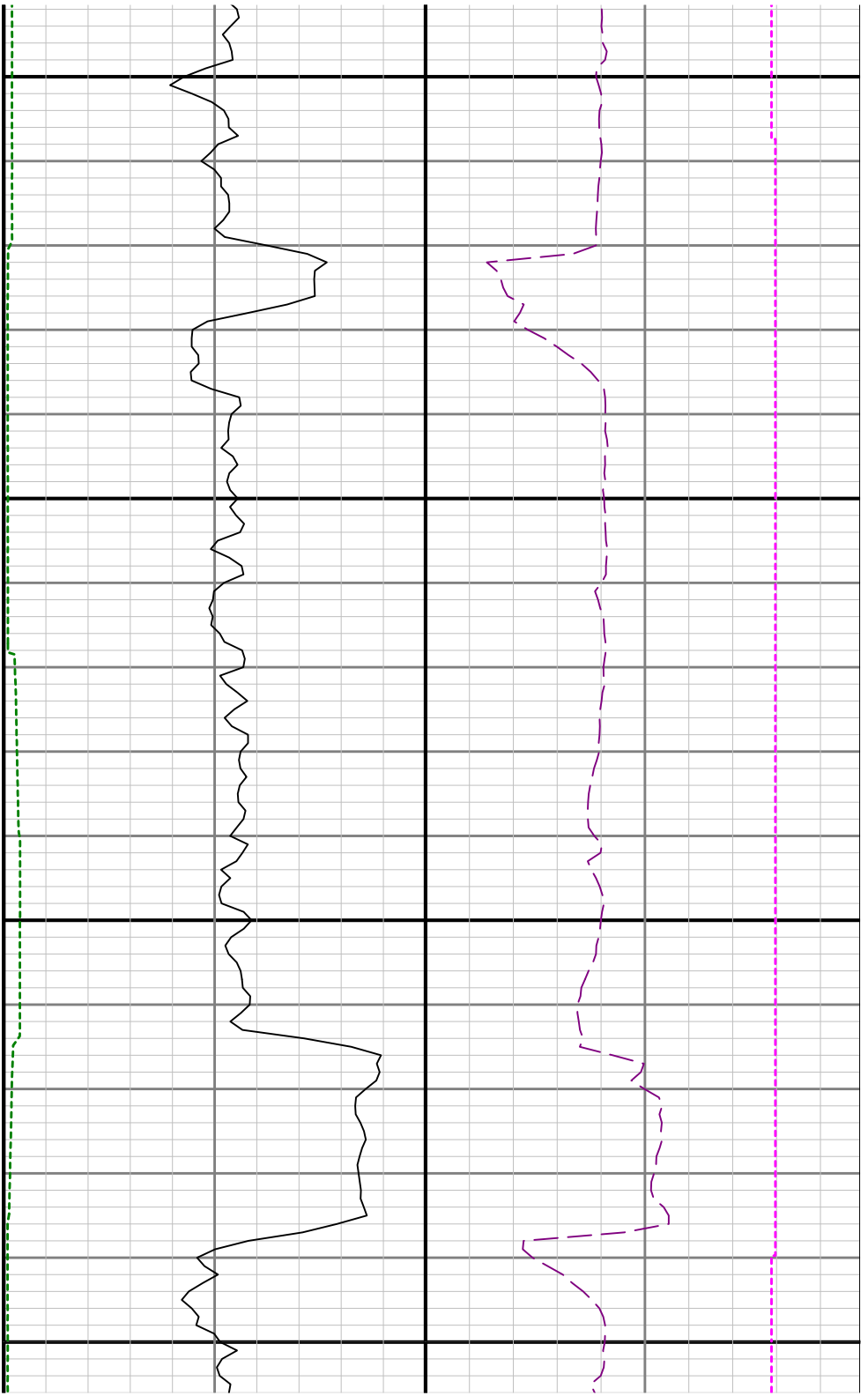












12700

12800

