

T10N, R58W, 6th P.M.

WHITING OIL & GAS CORP.

2012 Alum. Cap,  
#28285, 0.3' High  
Lat: 40.860647°  
Long: 103.823292°

2012 Alum. Cap,  
#28285, 0.3' High  
Lat: 40.860664°  
Long: 103.813706°

2006 Alum. Cap,  
#24949,  
0.6' Below Ground  
Lat: 40.860678°  
Long: 103.804117°

Target  
Bottom  
Hole

R  
58  
W  
R  
57  
W

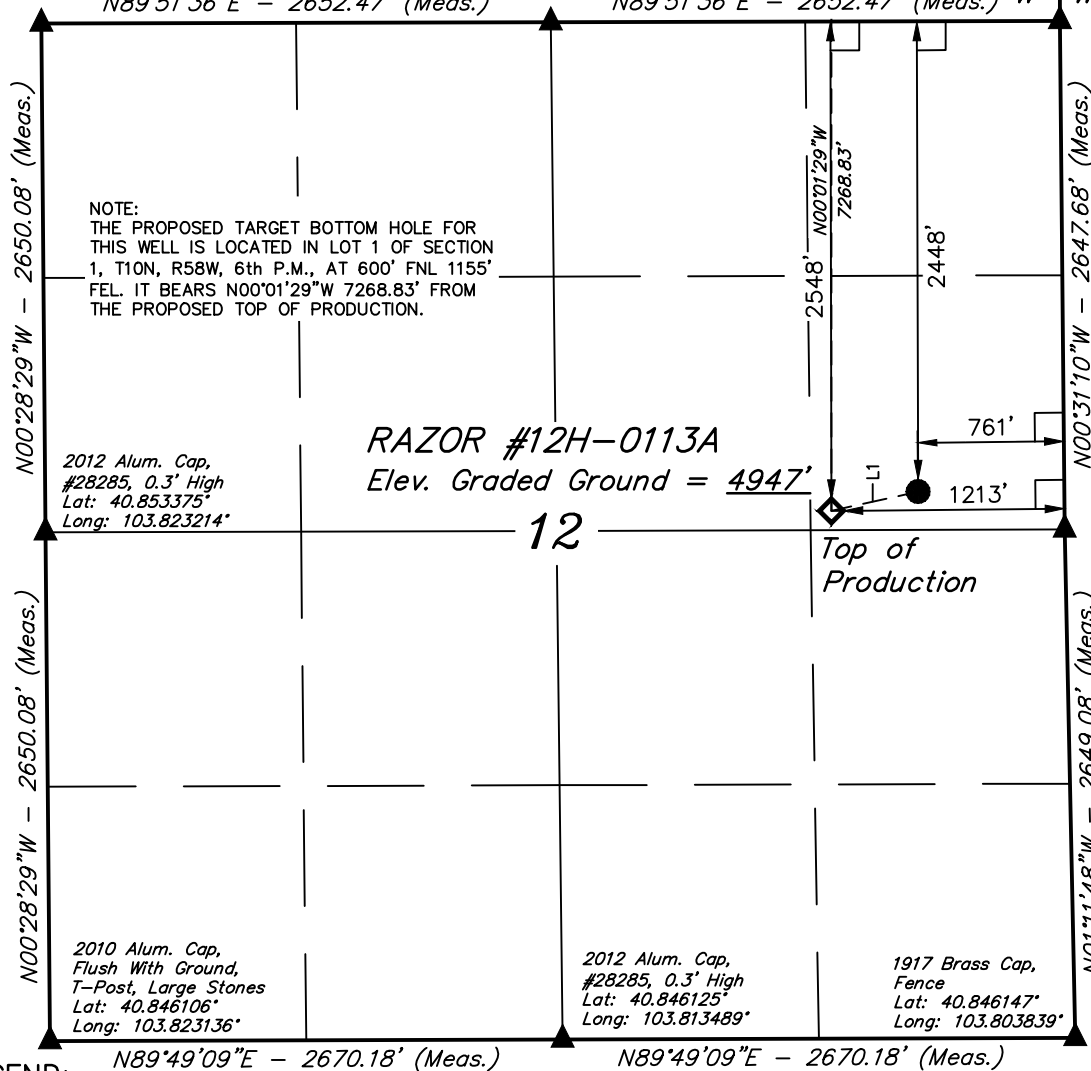
Well location, RAZOR #12H-0113A (SURFACE LOCATION), located as shown in the SE 1/4 NE 1/4 of Section 12, T10N, R58W, 6th P.M., Weld County, Colorado.

BASIS OF ELEVATION

SPOT ELEVATION LOCATED AT THE NORTHEAST CORNER OF SECTION 15, T9N, R58W, 6th P.M. TAKEN FROM THE GATEHOOK SPRING, QUADRANGLE, COLORADO, WELD COUNTY, 7.5 MINUTE QUAD (TOPOGRAPHIC MAP) PUBLISHED BY THE UNITED STATES DEPARTMENT OF THE INTERIOR, GEOLOGICAL SURVEY. SAID ELEVATION IS MARKED AS BEING 4679 FEET.

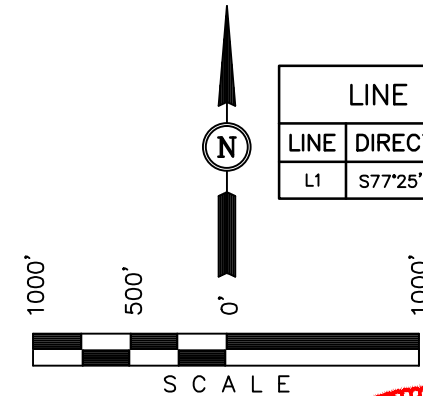
BASIS OF BEARINGS

BASIS OF BEARINGS IS A G.P.S. OBSERVATION.



LINE TABLE

LINE	DIRECTION	LENGTH
L1	S77°25'24"W	462.08'



CERTIFICATION

THIS IS TO CERTIFY THAT THE ABOVE PLAT WAS PREPARED FROM FIELD NOTES OF ACTUAL SURVEYS MADE BY ME OR UNDER MY SUPERVISION AND THAT THE SAME ARE TRUE AND CORRECT TO THE BEST OF MY KNOWLEDGE AND BELIEF.

REGISTERED LAND SURVEYOR  
REGISTRATION NO. 28285  
STATE OF COLORADO  
11-13-15

REVISED: 11-13-15 J.P.  
REVISED: 10-19-15 K.B.  
REVISED: 07-12-13

UINTAH ENGINEERING & LAND SURVEYING  
85 SOUTH 200 EAST - VERNAL, UTAH 84078  
(435) 789-1017

NAD 83 (TOP OF PRODUCTION)	NAD 83 (SURFACE LOCATION)
LATITUDE = 40°51'13.25" (40.853681)	LATITUDE = 40°51'14.24" (40.853956)
LONGITUDE = 103°48'30.32" (103.808422)	LONGITUDE = 103°48'24.45" (103.806792)
NAD 27 (TOP OF PRODUCTION)	NAD 27 (SURFACE LOCATION)
LATITUDE = 40°51'13.30" (40.853694)	LATITUDE = 40°51'14.29" (40.853969)
LONGITUDE = 103°48'28.51" (103.807919)	LONGITUDE = 103°48'22.65" (103.806292)

PDOP = 1.3

SCALE 1" = 1000'	DATE SURVEYED: 05-10-13	DATE DRAWN: 05-15-13
PARTY J.H. C.M. A.D.	REFERENCES G.L.O. PLAT	
WEATHER WARM	FILE WHITING OIL & GAS CORP.	

WHITING OIL & GAS CORP.

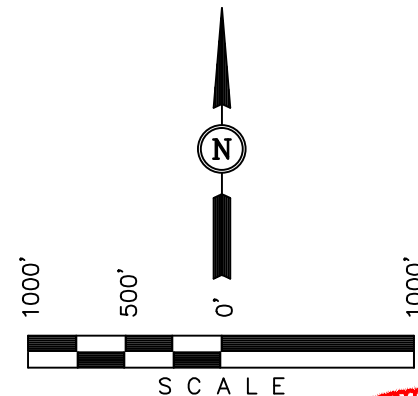
Well location, RAZOR #12H-0113A (TARGET BOTTOM HOLE), located as shown in LOT 1 of Section 1, T10N, R58W, 6th P.M., Weld County, Colorado.

## BASIS OF ELEVATION

SPOT ELEVATION LOCATED AT THE NORTHEAST CORNER OF SECTION 15, T9N, R58W, 6th P.M. TAKEN FROM THE GATEHOOK SPRING, QUADRANGLE, COLORADO, WELD COUNTY, 7.5 MINUTE QUAD (TOPOGRAPHIC MAP) PUBLISHED BY THE UNITED STATES DEPARTMENT OF THE INTERIOR, GEOLOGICAL SURVEY. SAID ELEVATION IS MARKED AS BEING 4679 FEET.

## BASIS OF BEARINGS

BASIS OF BEARINGS IS A G.P.S. OBSERVATION.



CERTIFICATE

THIS IS TO CERTIFY THAT THE ABOVE PLAT WAS PREPARED FROM  
FIELD NOTES OF ACTUAL SURVEYS MADE BY ME OR UNDER MY  
SUPERVISION AND THAT THE SAME ARE TRUE AND CORRECT TO THE  
BEST OF MY KNOWLEDGE AND BELIEF

REGISTERED LAND SURVEYOR  
REGISTRATION NO. 28285  
STATE OF COLORADO 11-13-15

REVISED: 11-13-15 J.P.  
REVISED: 10-19-15 K.B.  
REVISED: 07-12-13

# UINTAH ENGINEERING & LAND SURVEYING

85 SOUTH 200 EAST - VERNAL, UTAH 84078

(435) 789-1017

SCALE 1" = 1000'	DATE SURVEYED: 05-10-13	DATE DRAWN: 05-15-13
PARTY J.H. C.M. A.D.	REFERENCES G.L.O. PLAT	
WEATHER WARM	FILE WHITING OIL & GAS CORP.	

**T10N**  
**T11N**

**RAZOR #12H-0113A**  
**Target Bottom Hole**

**LOT 1**  
**LOT 2**  
**LOT 3**  
**LOT 4**

**2012 Alum. Cap,**  
**#28285, 0.3' High**  
**Lat: 40.875219°**  
**Long: 103.823419°**

**2012 Alum. Cap,**  
**#28285, 0.3' High**  
**Lat: 40.875256°**  
**Long: 103.813842°**

**2012 Alum. Cap,**  
**#28285, 0.3' High**  
**Lat: 40.867919°**  
**Long: 103.823356°**

**2012 Alum. Cap,**  
**#28285, 0.3' High**  
**Lat: 40.860647°**  
**Long: 103.823292°**

**2006 Alum. Cap,**  
**#24949,**  
**0.6' Below Ground**  
**Lat: 40.860678°**  
**Long: 103.804117°**

**NOTE:**  
THE PROPOSED TARGET BOTTOM HOLE BEARS  
N00°01'29"W 7268.83' FROM THE PROPOSED  
TOP OF PRODUCTION WHICH IS LOCATED IN  
THE SE 1/4 NE 1/4 OF SECTION 12, T10N,  
R58W, 6th P.M., AT 2548' FNL 1213' FEL.






**1**

**N89°43'14"E - 2649.73' (Meas.)**  
**N89°43'14"E - 2649.73' (Meas.)**  
**N89°51'36"E - 2652.47' (Meas.)**  
**N89°51'36"E - 2652.47' (Meas.)**

**N00°23'40"W - 2660.69' (Meas.)**  
**N00°23'40"W - 2650.09' (Meas.)**  
**N00°23'40"W - 2662.07' (Meas.)**  
**N00°31'18"W - 2662.07' (Meas.)**

**600'**  
**1155'**  
**7268.83'**  
**N00°01'29"W**

**LEGEND:**

-  = 90° SYMBOL  
 = PROPOSED WELLHEAD.  
 = TOP OF PRODUCTION.  
 = TARGET BOTTOM HOLE.  
 = SECTION CORNERS LOCATED.

*Top of Production*

<b>NAD 83 (TARGET BOTTOM HOLE)</b>	
LATITUDE	= 40°52'25.06" (40.873628)
LONGITUDE	= 103°48'30.33" (103.808425)
<b>NAD 27 (TARGET BOTTOM HOLE)</b>	
LATITUDE	= 40°52'25.11" (40.873642)
LONGITUDE	= 103°48'28.52" (103.807922)