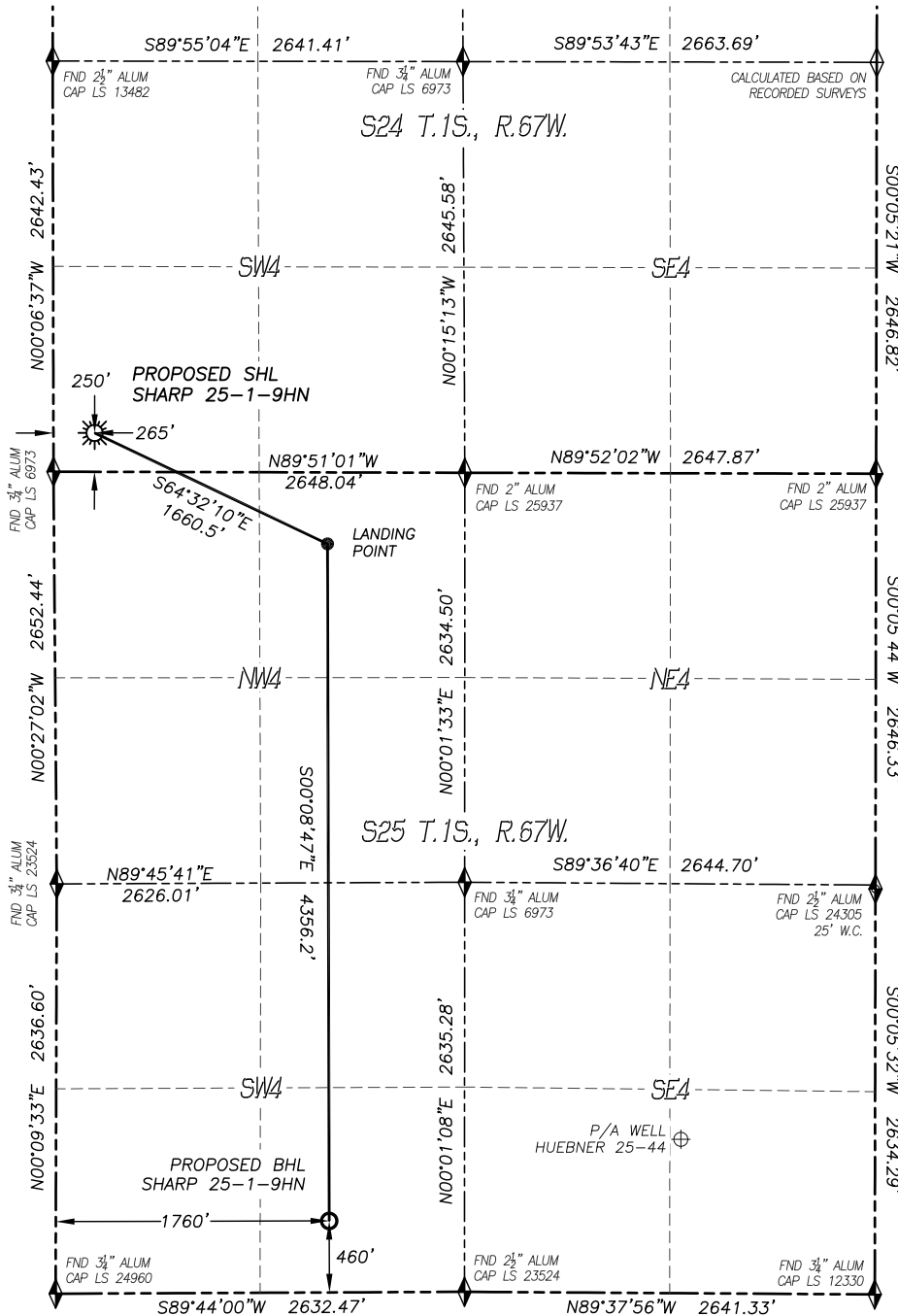


WELL LOCATION CERTIFICATE

SHARP 25-1-9HN

SECTION: 24
TOWNSHIP: 1S
RANGE: 67W



LEGEND

- ◆ FOUND MONUMENT AS DESCRIBED
- ☀ PROPOSED WELL
- ⊙ EXISTING WELL
- BOTTOM HOLE
- ⊗ ABANDONED WELL
- ◇ CALCULATED POSITION

0 1200
SCALE: 1" = 1200'

NAD 83 LATITUDE AND LONGITUDE

SURFACE LOCATION:

LATITUDE: N39.94403°
LONGITUDE: W104.84578°
ELEVATION: 5019'
PDOP: 1.5
QTR/QTR: SW4/SW4

LANDING POINT:

LATITUDE: N39.94207°
LONGITUDE: W104.84043°
FOOTAGE: 460' FNL, 1760' FWL
OF SEC. 25, T1S, R67W

BOTTOM HOLE:

LATITUDE: N39.93012°
LONGITUDE: W104.84039°

NEAREST CULTURAL ITEMS:

- 1) BUILDING: 527'± E
- 2) BUILDING UNIT: 551'± SE
- 3) HIGH OCC. BLD. UNIT: 5280'±
- 4) DES. OUTSIDE ACTIVITY AREA: 5280'±
- 5) PUBLIC ROAD: 239'± S
- 6) ABOVE GROUND UTILITY: 218'± S
- 7) RAILROAD: 1717'± SE
- 8) PROPERTY LINE: 250'± S

IN ACCORDANCE WITH A REQUEST FROM WARD PETROLEUM, DALEY LAND SURVEYING, INC. HAS DETERMINED THE SURFACE LOCATION OF THE SHARP 25-1-9HN WELL TO BE 250' FSL, 265' FWL, AS MEASURED AT NINETY (90) DEGREES FROM THE SECTION LINES OF SECTION 24, TOWNSHIP 1 SOUTH, RANGE 67 WEST, AND THE BOTTOM HOLE LOCATION TO BE 460' FSL, 1760' FWL, AS MEASURED AT NINETY (90) DEGREES FROM THE SECTION LINES OF SECTION 25, TOWNSHIP 1 SOUTH, RANGE 67 WEST OF THE 6TH PRINCIPAL MERIDIAN, ADAMS COUNTY, COLORADO.

I HEREBY CERTIFY THAT THIS WELL LOCATION CERTIFICATE WAS PREPARED BY ME OR UNDER MY DIRECT SUPERVISION, THAT THE WORK WAS COMPLETED ON 10/5/2015 FOR AND ON BEHALF OF WARD PETROLEUM, AND THAT THIS MAP DOES NOT REPRESENT A BOUNDARY SURVEY, IT IS NOT A LAND SURVEY PLAT OR AN IMPROVEMENT SURVEY PLAT AND IT IS NOT TO BE RELIED UPON FOR THE ESTABLISHMENT OF FENCE, BUILDING OR OTHER FUTURE IMPROVEMENT LINES.

NOTES:

- 1) BEARINGS FOR THIS MAP ARE ASSUMED AND BASED UPON GPS OBSERVATIONS MADE BETWEEN MONUMENTS LOCATED AT THE SOUTHWEST CORNER AND SOUTH QUARTER CORNER OF SECTION 24, T.1S., R.67W.
- 2) HORIZONTAL DATUM IS NAD83.
- 3) VERTICAL DATUM IS NAVD88 AND ORIGINATES FROM THE LOCAL C.O.R.S. NETWORK, UTILIZING THE GEOID12A MODEL.
- 4) SEE LOCATION DRAWING FOR VISIBLE IMPROVEMENTS WITHIN 500' OF PROPOSED DISTURBED AREA.
- 5) SURFACE USE: AGRICULTURAL.
- 6) INST. OPERATOR: SCOTT ESTABROOKS

