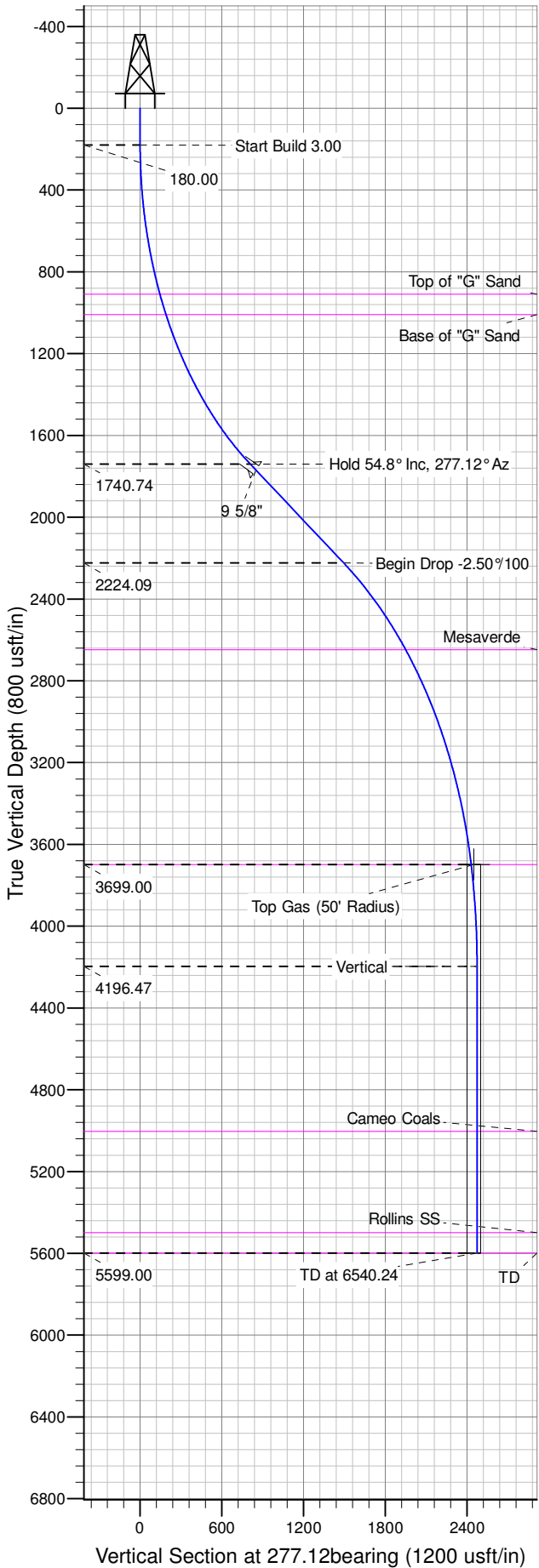


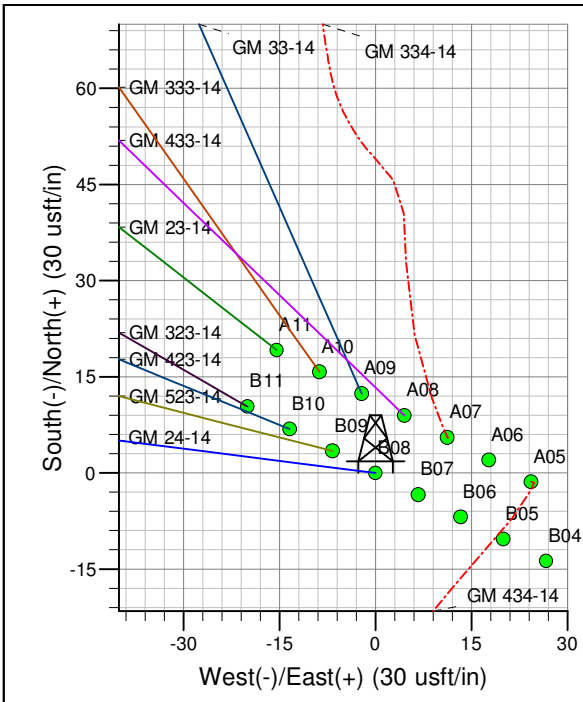
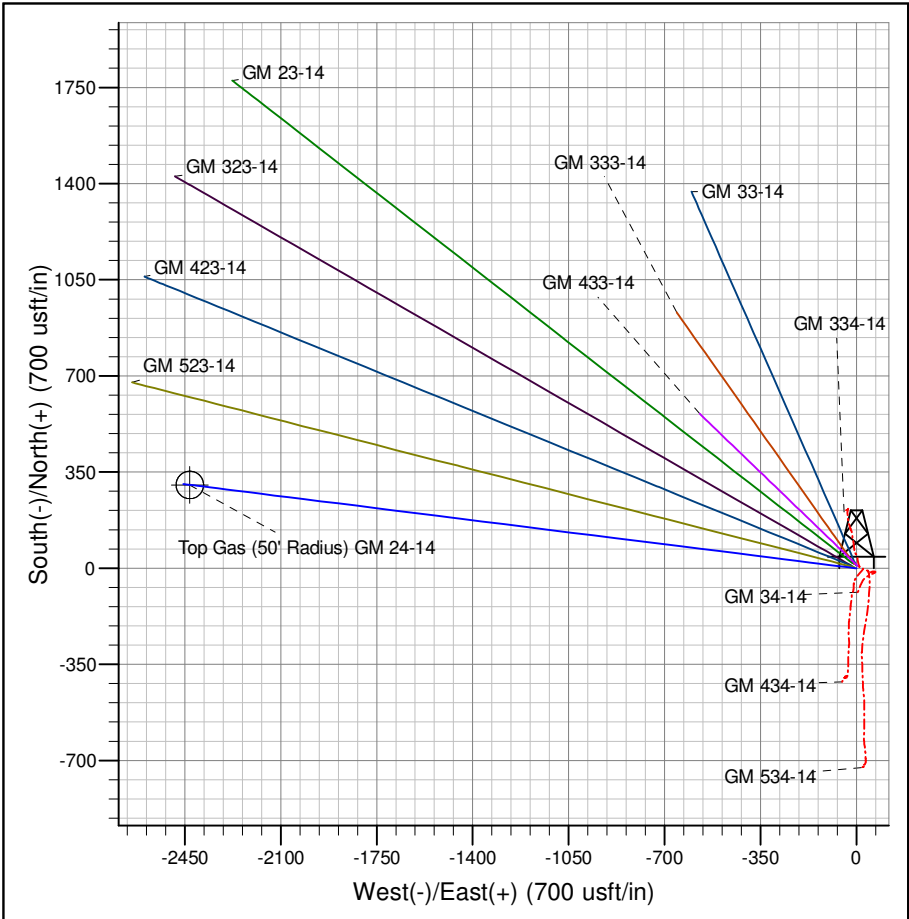


Well Name: GM 24-14
 Surface Location: GM 34-14 Pad
 North American Datum 1983 , US State Plane 1983 , Colorado Central Zone
 Ground Elevation: 5173.00
 +N/-S 0.00 +E/-W 0.00 Northing 1592870.90000 Easting 2272801.29900 Latitude 39.43290 Longitude -108.07492 Slot B08
 KELLY BUSHING @ 5199.00usft (Nabors 574 rig (26' RKB) kjs)



ANNOTATIONS

TVD	MD	Inc	Azi	+N/-S	+E/-W	Vsect	Departure	Annotation
180.00	180.00	0.00	0.00	0.00	0.00	0.00	0.00	Start Build 3.00
1740.74	2006.85	54.81	277.12	100.24	-802.87	809.10	809.10	Hold 54.8° Inc, 277.12° Az
2224.09	2845.49	54.81	277.12	185.14	-1482.92	1494.44	1494.44	Begin Drop -2.50°/100
3699.00	4637.70	10.00	277.12	301.11	-2411.82	2430.54	2430.54	Top Gas
4196.47	5137.70	0.00	0.00	306.50	-2455.00	2474.06	2474.06	Vertical
5599.00	6540.24	0.00	0.00	306.50	-2455.00	2474.06	2474.06	TD at 6540.24



Azimuths to True North
 Magnetic North: 10.11°
 Magnetic Field
 Strength: 52065.0snT
 Dip Angle: 65.64°
 Date: 4/23/2013
 Model: IGRF2005-10

Project: GV 14-07S-096W
 Site: GM 34-14 Pad
 Well: GM 24-14
 Design #2 02May14 mab