

2014 ANNUAL PROJECT SUMMARY TABLE

Incident Date	Remediation No.	Well Name	API	Status	NFA Submitted	NFA Approved Date	Site Summary (monitoring/remediation/wells installed or destroyed)	Wells Sampled (Last Quarter) 2014	Wells Exceeding 5 ug/L Benzene (Last Quarter Sampled 2014)	Benzene Range (ug/L) (Last Quarter 2014)	POC Established	2015 Recommendations	Well Reduction Request
2/11/2011	5719	Dubach 16-4, Thesing 9-4	05-123-15567	Assessment	NO	NA	Quarterly groundwater monitoring since March 2011. MW03 destroyed June 2013. MW03R installed July 2013.	MW01-MW09	MW01, MW03R, MW06	ND - 1,950	NO	Additional monitoring wells will be installed east of the former excavation and northeast of MW03R and MW06 based on the surveyed groundwater flow direction. Quarterly groundwater and surface water monitoring will continue.	NA

Notes:

NA - Not Applicable

ND - Non-Detect

NFA - No Further Action

POC - Point of Compliance

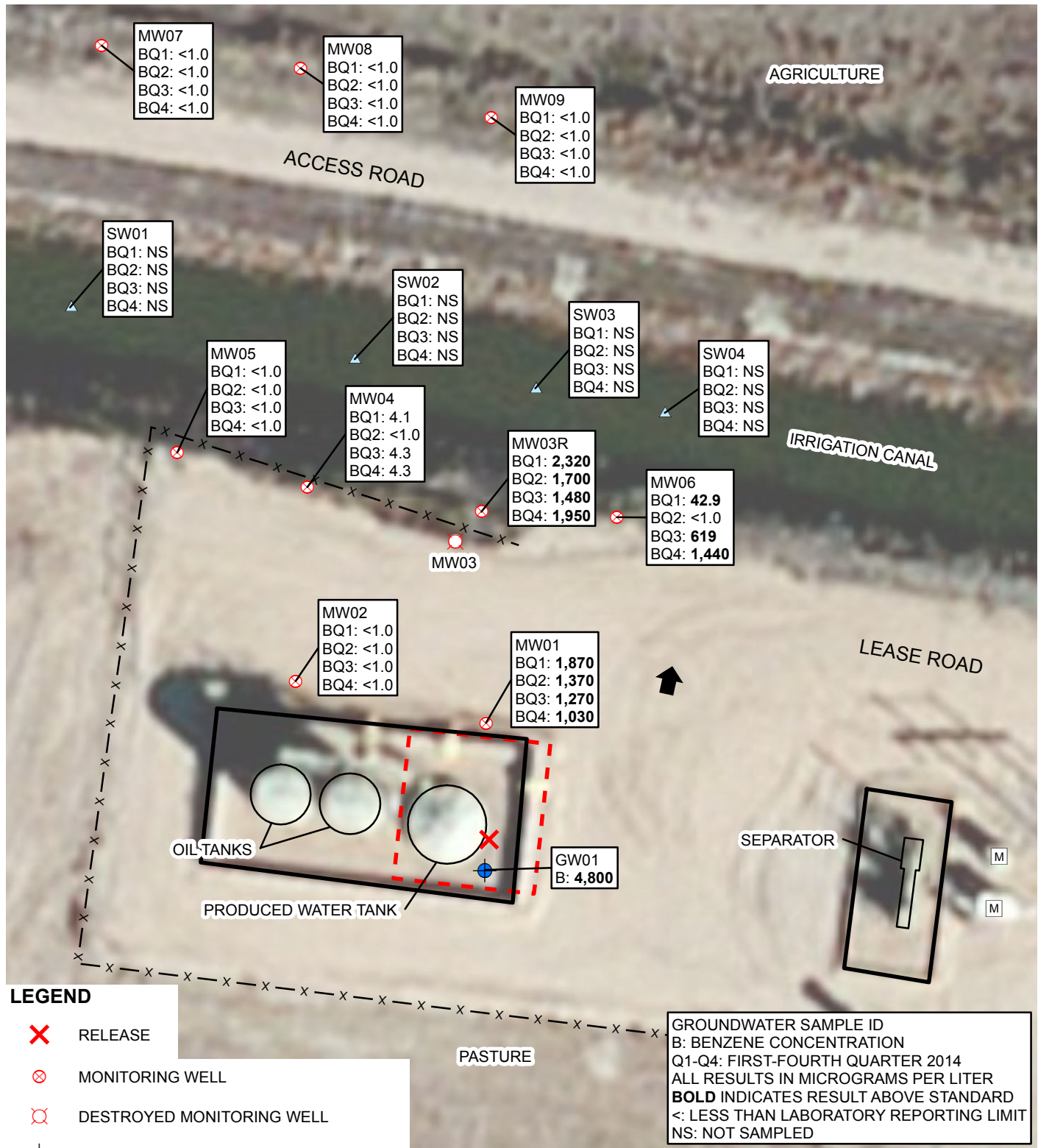
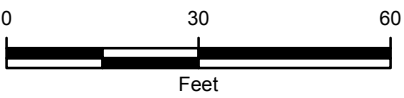


IMAGE COURTESY OF ESRI



LEGEND

- RELEASE
- MONITORING WELL
- DESTROYED MONITORING WELL
- GROUNDWATER SAMPLE
- SURFACE WATER SAMPLE
- METER HOUSE
- SURVEYED GROUNDWATER FLOW DIRECTION
- FENCE
- EXCAVATION EXTENT
- BERM

GROUNDWATER SAMPLE ID
 B: BENZENE CONCENTRATION
 Q1-Q4: FIRST-FOURTH QUARTER 2014
 ALL RESULTS IN MICROGRAMS PER LITER
BOLD INDICATES RESULT ABOVE STANDARD
<: LESS THAN LABORATORY REPORTING LIMIT
 NS: NOT SAMPLED

FIGURE 1
SITE MAP
 DUBACH 16-4, THESING 9-4
 SESE SEC 4-T3N-R66W
 WELD COUNTY, COLORADO
 KERR-MCGEE OIL & GAS ONSHORE LP



TABLE 1
GROUNDWATER ANALYTICAL AND FIELD RESULTS
DUBACH 16-4, THESING 9-4
WELD COUNTY, COLORADO
KERR-MCGEE OIL & GAS ONSHORE LP

Well Name	Date	Benzene (ug/L)	Toluene (ug/L)	Ethylbenzene (ug/L)	Xylenes (ug/L)	Depth Water/ (Product Thickness) (ft bgs)	Relative GW Elev. (ft)
GW01	02/10/2011	4800	2100	850	12000	NM	NA
MW01	03/24/2011	<1.0	<1.0	1100	12000	8.22	89.38
	06/09/2011	3900	2.5	190	6200	8.60	89.00
	09/02/2011	4500	1.6	180	8400	10.16	87.38
	12/02/2011	3200	2.8	760	7000	9.98	87.56
	03/06/2012	2400	1.5	530	5700	10.60	86.94
	06/19/2012	3600	<1.0	690	8200	9.63	87.91
	09/26/2012	2200	<1.0	620	5400	13.19	84.35
	12/21/2012	1800	1.5	660	7200	10.89	86.65
	03/29/2013	2200	1.5	410	4900	8.80	88.74
	06/27/2013	1800	1.0	590	5600	10.50	87.04
	09/10/2013	2600	<1.0	980	6900	10.79	86.75
	12/11/2013	1260	<200	416	3190	9.77	87.77
	12/17/2013	Surveyed - Not Sampled				9.88	87.75
	03/11/2014	1870	<10.0	908	2560	10.20	87.34
	06/06/2014	1370	<20.0	779	5540	6.19	91.44
	09/22/2014	1270	<20.0	812	3920	NM	NA
	12/02/2014	1030	<5.0	954	4160	8.26	89.37
MW02	03/24/2011	200	<1.0	25	4.1	8.10	89.40
	06/09/2011	23	<1.0	2.9	<1.0	8.47	89.03
	09/02/2011	69	<1.0	4.2	<1.0	10.03	87.47
	12/02/2011	170	<1.0	29	<1.0	9.92	87.58
	03/06/2012	29	<1.0	5.4	210	10.65	86.85
	06/19/2012	15	<1.0	19	1.5	9.76	87.74
	09/26/2012	5.4	<1.0	2.1	<1.0	13.20	84.30
	12/21/2012	4.6	<1.0	<1.0	<1.0	10.75	86.75
	03/29/2013	24	<1.0	<1.0	<1.0	8.50	89.00
	06/27/2013	<1.0	<1.0	<1.0	<1.0	10.35	87.15
	09/10/2013	3.2	<1.0	2.0	2.6	10.77	86.73
	12/11/2013	<1.0	<1.0	<1.0	<1.0	9.65	87.85
	12/17/2013	Surveyed - Not Sampled				9.73	87.81
	03/11/2014	<1.0	<1.0	<1.0	<1.0	10.09	87.41
	06/06/2014	<1.0	<1.0	<1.0	<1.0	5.98	91.56
	09/22/2014	<1.0	<1.0	<1.0	<1.0	NM	NA



TABLE 1 (Continued)
GROUNDWATER ANALYTICAL AND FIELD RESULTS
DUBACH 16-4, THESING 9-4
WELD COUNTY, COLORADO
KERR-MCGEE OIL & GAS ONSHORE LP

Well Name	Date	Benzene (ug/L)	Toluene (ug/L)	Ethylbenzene (ug/L)	Xylenes (ug/L)	Depth Water/ (Product Thickness) (ft bgs)	Relative GW Elev. (ft)	
MW02	12/02/2014	<1.0	<1.0	<1.0	<1.0	8.04	89.50	
MW03	03/24/2011	4900	<1.0	780	8700	7.08	NA	
	06/09/2011	240	<1.0	82	710	7.28	NA	
	09/02/2011	7900	<1.0	230	3100	9.27	NA	
	12/02/2011	4900	<1.0	670	7300	8.86	NA	
	03/06/2012	5900	<1.0	630	8500	9.45	NA	
	06/19/2012	3700	<1.0	570	7700	8.52	NA	
	09/26/2012	3900	<1.0	480	5700	12.38	NA	
	12/21/2012	2600	<1.0	250	2600	9.68	NA	
	03/29/2013	380	<1.0	18	440	8.13	NA	
	06/27/2013	Damaged - Not Sampled					Damaged	NA
	MW03 destroyed as of 6/27/2013							
MW03R	09/10/2013	2900	<1.0	510	5200	9.57	86.82	
	12/11/2013	1470	<10.0	324	2620	8.97	87.42	
	12/17/2013	Surveyed - Not Sampled					8.83	87.58
	03/11/2014	2320	<10.0	490	2590	9.24	87.15	
	06/06/2014	1700	<50.0	314	2010	5.16	91.25	
	09/22/2014	1480	<10.0	347	1870	NM	NA	
	12/02/2014	1950	<10.0	474	1710	7.34	89.07	
	MW04	03/24/2011	15	<1.0	160	2600	7.41	89.07
06/09/2011		17	<1.0	25	260	7.58	88.90	
09/02/2011		46	<1.0	92	650	9.45	87.03	
12/02/2011		110	<1.0	260	2900	9.32	87.16	
03/06/2012		110	<1.0	120	410	9.78	86.70	
06/19/2012		400	<1.0	450	2200	8.82	87.66	
09/26/2012		150	<1.0	100	220	12.65	83.83	
12/21/2012		7.5	<1.0	11	12	9.90	86.58	
03/29/2013		<1.0	<1.0	<1.0	10	8.24	88.24	
06/27/2013		2.6	<1.0	9.7	30	9.85	86.63	
09/10/2013		29	<1.0	98	250	9.71	86.77	
12/11/2013		2.0	<1.0	77.4	206	8.99	87.49	
12/17/2013		Surveyed - Not Sampled					9.50	87.64
03/11/2014		4.1	<1.0	111	181	9.25	87.23	
06/06/2014		<1.0	<1.0	60.1	158	5.54	91.60	
09/22/2014		4.3	<1.0	172	413	NM	NA	



TABLE 1 (Continued)
GROUNDWATER ANALYTICAL AND FIELD RESULTS
DUBACH 16-4, THESING 9-4
WELD COUNTY, COLORADO
KERR-MCGEE OIL & GAS ONSHORE LP

Well Name	Date	Benzene (ug/L)	Toluene (ug/L)	Ethylbenzene (ug/L)	Xylenes (ug/L)	Depth Water/ (Product Thickness) (ft bgs)	Relative GW Elev. (ft)	
MW04	12/02/2014	4.3	<2.0	55.5	112	8.31	88.83	
MW05	03/24/2011	<1.0	<1.0	<1.0	3.3	7.99	89.12	
	06/09/2011	<1.0	<1.0	<1.0	<1.0	8.19	88.92	
	09/02/2011	<1.0	<1.0	<1.0	<1.0	10.14	86.97	
	12/02/2011	<1.0	<1.0	<1.0	<1.0	9.91	87.20	
	03/06/2012	<1.0	<1.0	<1.0	<1.0	10.43	86.68	
	06/19/2012	<1.0	<1.0	<1.0	2.0	9.50	87.61	
	09/26/2012	<1.0	<1.0	<1.0	<1.0	13.50	83.61	
	12/21/2012	<1.0	<1.0	<1.0	<1.0	10.45	86.66	
	03/29/2013	<1.0	<1.0	<1.0	<1.0	8.77	88.34	
	06/27/2013	<1.0	<1.0	<1.0	<1.0	10.45	86.66	
	09/10/2013	<1.0	<1.0	<1.0	<1.0	10.33	86.78	
	12/11/2013	<1.0	<1.0	<1.0	<1.0	9.60	87.51	
	12/17/2013	Surveyed - Not Sampled					9.64	87.66
	03/11/2014	<1.0	<1.0	<1.0	<1.0	9.88	87.23	
	06/06/2014	<1.0	<1.0	<1.0	<1.0	5.81	91.49	
	09/22/2014	<1.0	<1.0	<1.0	<1.0	NM	NA	
12/02/2014	<1.0	<1.0	<1.0	<1.0	8.12	89.18		
MW06	03/24/2011	1.4	<1.0	25	310	7.19	88.59	
	06/09/2011	<1.0	<1.0	1.3	9.6	6.89	88.89	
	09/02/2011	31	<1.0	18	120	8.96	86.82	
	12/02/2011	15	<1.0	42	270	8.69	87.09	
	03/06/2012	320	<1.0	25	310	9.08	86.70	
	06/19/2012	350	<1.0	37	870	8.21	87.57	
	09/26/2012	190	<1.0	54	410	12.03	83.75	
	12/21/2012	11	<1.0	45	150	9.50	86.28	
	03/29/2013	<1.0	<1.0	<1.0	<1.0	8.80	87.70	
	06/27/2013	4.7	<1.0	19	68	9.21	86.57	
	09/10/2013	34	<1.0	29	130	8.88	86.90	
	12/11/2013	1.4	<1.0	11.6	41.1	8.49	87.29	
	12/17/2013	Surveyed - Not Sampled					8.21	87.58
	03/11/2014	42.9	<1.0	32.7	137	8.66	87.12	
	06/06/2014	<1.0	<1.0	<1.0	<1.0	4.27	91.52	
	09/22/2014	619	<1.0	46.3	192	NM	NA	



TABLE 1 (Continued)
GROUNDWATER ANALYTICAL AND FIELD RESULTS
DUBACH 16-4, THESING 9-4
WELD COUNTY, COLORADO
KERR-MCGEE OIL & GAS ONSHORE LP

Well Name	Date	Benzene (ug/L)	Toluene (ug/L)	Ethylbenzene (ug/L)	Xylenes (ug/L)	Depth Water/ (Product Thickness) (ft bgs)	Relative GW Elev. (ft)	
MW06	12/02/2014	1440	<2.0	54.8	153	6.38	89.41	
MW07	07/27/2011	<1.0	<1.0	<1.0	<1.0	7.88	87.72	
	09/02/2011	<1.0	<1.0	<1.0	2.4	9.60	85.90	
	12/02/2011	<1.0	<1.0	<1.0	<1.0	9.63	85.87	
	03/06/2012	<1.0	<1.0	<1.0	<1.0	10.01	85.49	
	06/19/2012	<1.0	<1.0	<1.0	<1.0	9.06	86.44	
	09/26/2012	<1.0	<1.0	<1.0	<1.0	12.58	82.92	
	12/21/2012	<1.0	<1.0	<1.0	<1.0	9.90	85.60	
	03/29/2013	<1.0	<1.0	<1.0	<1.0	8.00	87.50	
	06/27/2013	<1.0	<1.0	<1.0	<1.0	10.01	85.49	
	09/10/2013	<1.0	<1.0	<1.0	<1.0	9.84	85.66	
	12/11/2013	<1.0	<1.0	<1.0	<1.0	9.31	86.19	
	12/17/2013	Surveyed - Not Sampled					9.26	86.34
	03/11/2014	<1.0	<1.0	<1.0	<1.0	9.44	86.06	
	06/06/2014	<1.0	<1.0	<1.0	<1.0	4.63	90.97	
	09/22/2014	<1.0	<1.0	<1.0	<1.0	NM	NA	
	12/02/2014	<1.0	<1.0	<1.0	<1.0	7.13	88.47	
MW08	07/27/2011	<1.0	<1.0	<1.0	<1.0	7.89	87.70	
	09/02/2011	<1.0	<1.0	<1.0	<1.0	9.75	85.79	
	12/02/2011	<1.0	<1.0	<1.0	<1.0	9.62	85.86	
	03/06/2012	<1.0	<1.0	<1.0	<1.0	10.00	85.48	
	06/19/2012	<1.0	<1.0	<1.0	<1.0	9.05	86.43	
	09/26/2012	<1.0	<1.0	<1.0	<1.0	12.51	82.97	
	12/21/2012	<1.0	<1.0	<1.0	<1.0	10.00	85.48	
	03/29/2013	<1.0	<1.0	<1.0	<1.0	7.99	87.49	
	06/27/2013	<1.0	<1.0	<1.0	<1.0	10.14	85.34	
	09/10/2013	<1.0	<1.0	<1.0	<1.0	9.84	85.64	
	12/11/2013	<1.0	<1.0	<1.0	<1.0	9.32	86.16	
	12/17/2013	Surveyed - Not Sampled					9.40	86.30
	03/11/2014	<1.0	<1.0	<1.0	<1.0	9.44	86.04	
	06/06/2014	<1.0	<1.0	<1.0	<1.0	5.21	90.49	
	09/22/2014	<1.0	<1.0	<1.0	<1.0	NM	NA	
	12/02/2014	<1.0	<1.0	<1.0	<1.0	7.31	88.39	
MW09	07/27/2011	<1.0	<1.0	<1.0	<1.0	7.83	87.77	



TABLE 1 (Continued)
GROUNDWATER ANALYTICAL AND FIELD RESULTS
DUBACH 16-4, THESING 9-4
WELD COUNTY, COLORADO
KERR-MCGEE OIL & GAS ONSHORE LP

Well Name	Date	Benzene (ug/L)	Toluene (ug/L)	Ethylbenzene (ug/L)	Xylenes (ug/L)	Depth Water/ (Product Thickness) (ft bgs)	Relative GW Elev. (ft)
MW09	09/02/2011	<1.0	<1.0	<1.0	<1.0	9.69	85.85
	12/02/2011	<1.0	<1.0	<1.0	<1.0	9.58	85.96
	03/06/2012	<1.0	<1.0	<1.0	<1.0	9.95	85.59
	06/19/2012	<1.0	<1.0	<1.0	<1.0	9.03	86.51
	09/26/2012	14	<1.0	<1.0	<1.0	12.45	83.09
	12/21/2012	<1.0	<1.0	<1.0	<1.0	10.07	85.47
	03/29/2013	<1.0	<1.0	<1.0	<1.0	8.14	87.40
	06/27/2013	<1.0	<1.0	<1.0	<1.0	10.05	85.49
	09/10/2013	<1.0	<1.0	<1.0	<1.0	9.79	85.75
	12/11/2013	<1.0	<1.0	<1.0	<1.0	9.33	86.21
	12/17/2013	Surveyed - Not Sampled				9.25	86.37
	03/11/2014	<1.0	<1.0	<1.0	<1.0	9.44	86.10
	06/06/2014	<1.0	<1.0	<1.0	<1.0	5.13	90.49
	09/22/2014	<1.0	<1.0	<1.0	<1.0	NM	NA
	12/02/2014	<1.0	<1.0	<1.0	<1.0	7.16	88.46
CGWQS		5	1000	700	1400		

Notes: ug/L - micrograms per Liter
ft bgs - feet below ground surface
GW - Groundwater

Elev. - Elevation
Bold numbers indicate result exceeded standard.
< - less than

NA - Not Analyzed/Not Available
NM - Not Measured
CGWQS - Colorado Groundwater Quality Standards



TABLE 2
SURFACE WATER ANALYTICAL AND FIELD RESULTS
DUBACH 16-4, THESING 9-4
WELD COUNTY, COLORADO
KERR-MCGEE OIL & GAS ONSHORE LP

Sample Name	Date	Benzene (ug/L)	Toluene (ug/L)	Ethyl-benzene (ug/L)	Xylenes (ug/L)
SW01	03/06/2012	Dry - Not Sampled			NA
	06/19/2012	Dry - Not Sampled			NA
	09/26/2012	Dry - Not Sampled			NA
	12/21/2012	Dry - Not Sampled			NA
	03/29/2013	<1.0	<1.0	<1.0	<1.0
	06/27/2013	Dry - Not Sampled			NA
	09/10/2013	Dry - Not Sampled			NA
	12/11/2013	Dry - Not Sampled			NA
	03/11/2014	Not Sampled			NA
	06/06/2014	Dry - Not Sampled			NA
	09/21/2014	Dry - Not Sampled			NA
	12/02/2014	Dry - Not Sampled			NA
SW02	03/06/2012	Dry - Not Sampled			NA
	06/19/2012	Dry - Not Sampled			NA
	09/26/2012	Dry - Not Sampled			NA
	12/21/2012	Dry - Not Sampled			NA
	03/29/2013	<1.0	<1.0	<1.0	<1.0
	06/27/2013	Dry - Not Sampled			NA
	09/10/2013	Dry - Not Sampled			NA
	12/11/2013	Dry - Not Sampled			NA
	03/11/2014	Not Sampled			NA
	06/06/2014	Dry - Not Sampled			NA
	09/21/2014	Dry - Not Sampled			NA
	12/02/2014	Dry - Not Sampled			NA
SW03	03/11/2014	Not Sampled			NA
	06/06/2014	Dry - Not Sampled			NA
	09/21/2014	Dry - Not Sampled			NA
	12/02/2014	Dry - Not Sampled			NA
SW04	03/11/2014	Not Sampled			NA
	06/06/2014	Dry - Not Sampled			NA
	09/21/2014	Dry - Not Sampled			NA



TABLE 2 (Continued)
SURFACE WATER ANALYTICAL AND FIELD RESULTS
DUBACH 16-4, THESING 9-4
WELD COUNTY, COLORADO
KERR-MCGEE OIL & GAS ONSHORE LP

Sample Name	Date	Benzene (ug/L)	Toluene (ug/L)	Ethyl-benzene (ug/L)	Xylenes (ug/L)
SW04	12/02/2014	Dry - Not Sampled			NA

Notes: < - less than
ug/L - micrograms per Liter
NA - Not Analyzed/Not Available

