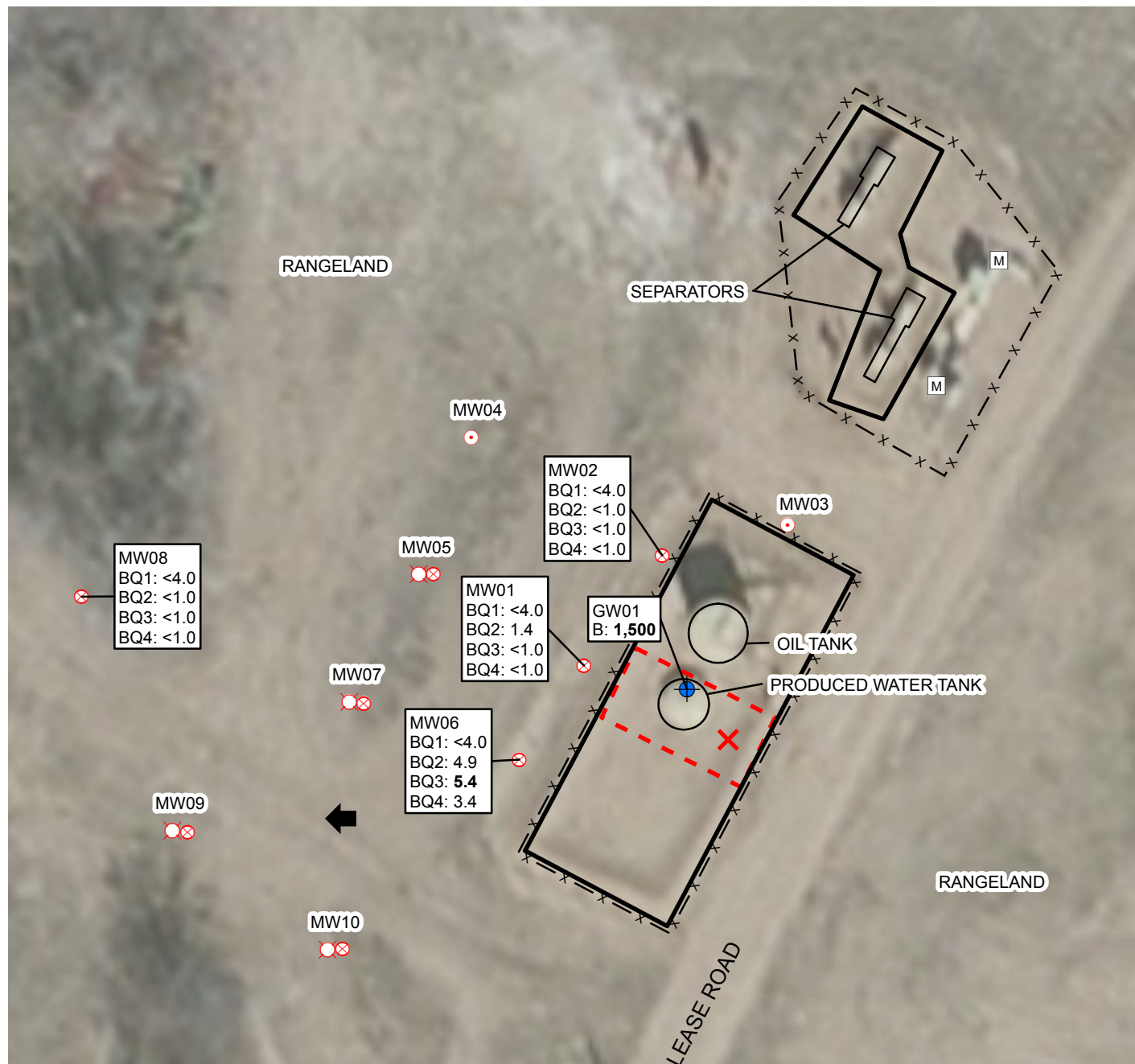


2014 ANNUAL PROJECT SUMMARY TABLE

Incident Date	Remediation No.	Well Name	API	Status	NFA Submitted	NFA Approved Date	Site Summary (monitoring/remediation/ wells installed or destroyed)	Wells Sampled (Last Quarter) 2014	Wells Exceeding 5 ug/L Benzene (Last Quarter Sampled 2014)	Benzene Range (ug/L) (Last Quarter 2014)	POC Established	2015 Recommendations	Well Reduction Request
1/19/2009	4480	Karich Helen E Unit #2/ Herman 32-9K/ Herman 32-10K	05-123-10830	Monitoring	NO	NA	Quarterly groundwater monitoring since February 2009. MW03 and MW04 were removed from the monitoring program in 2011.	MW01, MW02, MW06, MW08	None	ND	YES	Destroyed wells MW05, MW07, and MW09 will be replaced. Quarterly groundwater monitoring will continue.	NA

Notes:
NA - Not Applicable
ND - Non-Detect
NFA - No Further Action
POC - Point of Compliance



LEGEND

- ✕ RELEASE
- ⊗ MONITORING WELL
- ⊗ DESTROYED MONITORING WELL
- ⊙ REMOVED FROM MONITORING PROGRAM
- + GROUNDWATER SAMPLE
- M METER HOUSE
- ↑ SURVEYED GROUNDWATER FLOW DIRECTION
- x — x FENCE
- EXCAVATION EXTENT
- BERM

GROUNDWATER SAMPLE ID
 B: BENZENE CONCENTRATION
 Q1-Q4: FIRST-FOURTH QUARTER 2014
 ALL RESULTS IN MICROGRAMS PER LITER
BOLD INDICATES RESULT ABOVE STANDARD
 <: LESS THAN LABORATORY REPORTING LIMIT

IMAGE COURTESY OF ESRI

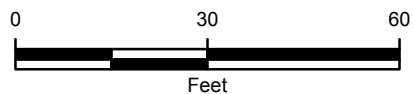


FIGURE 1
SITE MAP
 KARICH HELEN E UNIT #2/
 HERMAN 32-9K / HERMAN 32-10K
 SWSE SEC 32-T3N-R66W
 WELD COUNTY, COLORADO
 KERR-MCGEE OIL & GAS ONSHORE LP



TABLE 1
GROUNDWATER ANALYTICAL AND FIELD RESULTS
KARICH HELEN E UNIT #2/HERMAN 32-9K/HERMAN 32-10K
WELD COUNTY, COLORADO
KERR-MCGEE OIL & GAS ONSHORE LP

Well Name	Date	Benzene (ug/L)	Toluene (ug/L)	Ethylbenzene (ug/L)	Xylenes (ug/L)	Depth Water/ (Product Thickness) (ft bgs)	Relative GW Elev. (ft)
GW01	01/22/2009	1500	210	26	210	NM	NA
MW01	02/25/2009	10000	580	280	1200	5.60	91.50
	04/24/2009	2300	3.3	94	300	4.21	92.89
	07/13/2009	55	<1.0	1.9	<1.0	4.12	92.98
	10/13/2009	<1.0	<1.0	<1.0	<1.0	6.22	90.88
	01/22/2010	150	<1.0	<1.0	<1.0	5.57	91.53
	04/01/2010	95	<1.0	<1.0	<1.0	4.82	92.28
	07/22/2010	6.9	<1.0	1.5	6.9	3.98	93.12
	10/07/2010	1.8	<1.0	<1.0	<1.0	5.32	91.78
	01/20/2011	13	<1.0	<1.0	<1.0	5.66	91.44
	04/07/2011	<1.0	<1.0	<1.0	<1.0	5.48	91.62
	07/18/2011	21	<1.0	18	46	4.51	92.59
	10/07/2011	<1.0	<1.0	<1.0	<1.0	6.58	90.52
	01/18/2012	5.7	<1.0	<1.0	<1.0	5.67	91.43
	04/13/2012	2.2	<1.0	8.7	32	5.35	91.75
	07/12/2012	<1.0	<1.0	<1.0	<1.0	5.13	91.97
	10/25/2012	<1.0	<1.0	<1.0	<1.0	6.65	90.45
	01/08/2013	<1.0	<1.0	<1.0	<1.0	6.20	90.90
	04/18/2013	26	<1.0	87	210	5.45	91.65
	07/16/2013	<1.0	<1.0	<1.0	<1.0	6.37	90.73
	10/03/2013	1.3	<1.0	<1.0	<1.0	5.70	91.40
	11/18/2013	Survey - Not Sampled				5.71	91.29
	01/31/2014	<4.0	<4.0	<4.0	<4.0	5.57	91.53
	04/01/2014	1.4	<1.0	<1.0	<1.0	5.31	91.69
	07/24/2014	<1.0	<1.0	8.4	61.8	4.29	92.71
	10/17/2014	<1.0	<1.0	<1.0	<1.0	5.07	91.93
MW02	02/25/2009	<1.0	<1.0	<1.0	<1.0	5.25	91.66
	04/24/2009	<1.0	<1.0	<1.0	<1.0	3.71	93.20
	07/13/2009	<1.0	<1.0	<1.0	<1.0	3.85	93.06
	10/13/2009	<1.0	<1.0	<1.0	<1.0	5.88	91.03
	01/22/2010	<1.0	<1.0	<1.0	<1.0	5.19	91.72
	04/01/2010	<1.0	<1.0	<1.0	<1.0	4.30	92.61
	07/22/2010	<1.0	<1.0	<1.0	<1.0	3.56	93.35
	10/07/2010	<1.0	<1.0	<1.0	<1.0	4.92	91.99



TABLE 1 (Continued)
GROUNDWATER ANALYTICAL AND FIELD RESULTS
KARICH HELEN E UNIT #2/HERMAN 32-9K/HERMAN 32-10K
WELD COUNTY, COLORADO
KERR-MCGEE OIL & GAS ONSHORE LP

Well Name	Date	Benzene (ug/L)	Toluene (ug/L)	Ethylbenzene (ug/L)	Xylenes (ug/L)	Depth Water/ (Product Thickness) (ft bgs)	Relative GW Elev. (ft)
MW02	01/20/2011	<1.0	<1.0	<1.0	<1.0	5.30	91.61
	04/07/2011	<1.0	<1.0	<1.0	<1.0	5.20	91.71
	07/18/2011	<1.0	<1.0	<1.0	<1.0	4.17	92.74
	10/07/2011	<1.0	<1.0	<1.0	<1.0	6.27	90.64
	01/18/2012	<1.0	<1.0	<1.0	<1.0	5.42	91.39
	04/13/2012	<1.0	<1.0	<1.0	<1.0	5.07	91.84
	07/12/2012	<1.0	<1.0	<1.0	<1.0	4.58	92.33
	10/25/2012	<1.0	<1.0	<1.0	<1.0	6.30	90.61
	01/08/2013	<1.0	<1.0	<1.0	<1.0	5.88	91.03
	04/18/2013	<1.0	<1.0	<1.0	<1.0	5.03	91.88
	07/16/2013	<1.0	<1.0	<1.0	<1.0	6.20	90.71
	10/03/2013	<1.0	<1.0	<1.0	<1.0	5.45	91.46
	11/18/2013	Survey - Not Sampled				5.53	91.44
	01/31/2014	<4.0	<4.0	<4.0	<4.0	5.25	91.66
	04/01/2014	<1.0	<1.0	<1.0	<1.0	5.20	91.77
	07/24/2014	<1.0	<1.0	<1.0	<1.0	4.06	92.91
	10/17/2014	<1.0	<1.0	<1.0	<1.0	4.87	92.10
MW03	02/25/2009	<1.0	<1.0	<1.0	<1.0	5.55	91.86
	04/24/2009	<1.0	<1.0	<1.0	<1.0	3.84	93.57
	07/13/2009	<1.0	<1.0	<1.0	<1.0	4.10	93.31
	10/13/2009	<1.0	<1.0	<1.0	<1.0	6.15	91.26
	01/22/2010	<1.0	<1.0	<1.0	<1.0	5.51	94.60
	04/01/2010	<1.0	<1.0	<1.0	<1.0	4.60	92.81
	07/22/2010	<1.0	<1.0	<1.0	<1.0	3.75	93.66
	10/07/2010	<1.0	<1.0	<1.0	<1.0	5.19	92.22
	01/20/2011	<1.0	<1.0	<1.0	<1.0	5.54	91.87
	04/07/2011	<1.0	<1.0	<1.0	<1.0	5.45	91.96
	07/18/2011	Removed from monitoring				NM	NA
	11/18/2013	Survey - Not Sampled				5.88	91.59
MW04	04/24/2009	<1.0	<1.0	<1.0	<1.0	3.58	NA
	07/13/2009	<1.0	<1.0	<1.0	<1.0	4.33	NA
	10/13/2009	<1.0	<1.0	<1.0	<1.0	5.21	NA
	01/22/2010	<1.0	<1.0	<1.0	<1.0	4.45	NA
	04/01/2010	<1.0	<1.0	<1.0	<1.0	3.61	NA



TABLE 1 (Continued)
GROUNDWATER ANALYTICAL AND FIELD RESULTS
KARICH HELEN E UNIT #2/HERMAN 32-9K/HERMAN 32-10K
WELD COUNTY, COLORADO
KERR-MCGEE OIL & GAS ONSHORE LP

Well Name	Date	Benzene (ug/L)	Toluene (ug/L)	Ethylbenzene (ug/L)	Xylenes (ug/L)	Depth Water/ (Product Thickness) (ft bgs)	Relative GW Elev. (ft)
MW04	07/22/2010	<1.0	<1.0	<1.0	<1.0	2.98	NA
	10/07/2010	<1.0	<1.0	<1.0	<1.0	PVC Blocked	NA
	01/20/2011	<1.0	<1.0	<1.0	<1.0	PVC Blocked	NA
	04/07/2011	<1.0	<1.0	<1.0	<1.0	4.62	NA
	07/18/2011	Removed from monitoring				NM	NA
MW05	04/24/2009	<1.0	<1.0	<1.0	<1.0	5.29	NA
	07/13/2009	<1.0	<1.0	<1.0	<1.0	3.73	NA
	10/13/2009	1.4	<1.0	<1.0	<1.0	5.65	NA
	01/22/2010	8.5	<1.0	<1.0	<1.0	5.03	NA
	04/01/2010	1.8	<1.0	<1.0	<1.0	4.20	NA
	07/22/2010	<1.0	<1.0	<1.0	<1.0	3.61	NA
	10/07/2010	<1.0	<1.0	<1.0	<1.0	4.85	NA
	01/20/2011	<1.0	<1.0	<1.0	<1.0	PVC Blocked	NA
	04/07/2011	<1.0	<1.0	<1.0	<1.0	PVC Blocked	NA
	07/18/2011	<1.0	<1.0	<1.0	<1.0	PVC Blocked	NA
	10/07/2011	12	<1.0	<1.0	<1.0	6.11	NA
	01/18/2012	<1.0	<1.0	<1.0	<1.0	PVC Blocked	NA
	04/13/2012	<1.0	<1.0	<1.0	<1.0	PVC Blocked	NA
	07/12/2012	<1.0	<1.0	<1.0	<1.0	PVC Blocked	NA
	11/01/2012	<1.0	<1.0	<1.0	<1.0	6.65	NA
	01/08/2013	<1.0	<1.0	<1.0	<1.0	5.44	NA
	04/18/2013	<1.0	<1.0	<1.0	<1.0	4.66	NA
	07/16/2013	Damaged - Not Sampled				Damaged	NA
MW05 destroyed as of 10/3/2013							
MW06	07/22/2010	190	<1.0	240	5.8	4.24	93.14
	10/07/2010	170	<1.0	200	<1.0	5.37	91.92
	01/20/2011	30	<1.0	90	<1.0	5.83	91.46
	04/07/2011	56	<1.0	290	<1.0	5.77	91.52
	07/18/2011	110	<1.0	140	<1.0	4.76	92.53
	10/07/2011	19	<1.0	15	<1.0	6.12	91.17
	01/18/2012	6.7	<1.0	9.8	<1.0	6.01	91.28
	04/13/2012	3.0	<1.0	<1.0	<1.0	5.20	92.09
	07/12/2012	29	<1.0	21	<1.0	5.59	91.70
	10/25/2012	8.0	<1.0	<1.0	<1.0	6.83	90.46
	01/08/2013	5.1	<1.0	<1.0	<1.0	6.42	90.87



TABLE 1 (Continued)
GROUNDWATER ANALYTICAL AND FIELD RESULTS
KARICH HELEN E UNIT #2/HERMAN 32-9K/HERMAN 32-10K
WELD COUNTY, COLORADO
KERR-MCGEE OIL & GAS ONSHORE LP

Well Name	Date	Benzene (ug/L)	Toluene (ug/L)	Ethylbenzene (ug/L)	Xylenes (ug/L)	Depth Water/ (Product Thickness) (ft bgs)	Relative GW Elev. (ft)
MW06	04/18/2013	5.3	<1.0	1.0	<1.0	5.66	91.63
	07/16/2013	9.6	<1.0	<1.0	<1.0	6.39	90.90
	10/03/2013	1.2	<1.0	<1.0	<1.0	5.78	91.51
	11/18/2013	Survey - Not Sampled				5.86	91.37
	01/31/2014	<4.0	<4.0	<4.0	<4.0	5.71	91.58
	04/01/2014	4.9	<1.0	5.8	<1.0	5.42	91.81
	07/24/2014	5.4	<1.0	<1.0	<1.0	4.57	92.66
	10/17/2014	3.4	<1.0	1.4	<1.0	5.22	92.01
MW07	07/22/2010	46	<1.0	<1.0	<1.0	3.74	NA
	10/07/2010	5.3	<1.0	<1.0	<1.0	4.96	NA
	01/20/2011	<1.0	<1.0	1.2	<1.0	PVC Blocked	NA
	04/07/2011	3.4	<1.0	<1.0	<1.0	PVC Blocked	NA
	07/18/2011	2.0	<1.0	2.9	5.8	PVC Blocked	NA
	10/07/2011	<1.0	<1.0	<1.0	<1.0	4.71	NA
	01/18/2012	<1.0	<1.0	<1.0	<1.0	PVC Blocked	NA
	04/13/2012	18	<1.0	32	31	PVC Blocked	NA
	07/12/2012	<1.0	<1.0	<1.0	<1.0	3.50	NA
	10/25/2012	Damaged - Not Sampled				NM	NA
MW07 destroyed as of 1/7/2013							
MW08	11/29/2010	<1.0	<1.0	<1.0	<1.0	5.11	91.09
	01/20/2011	<1.0	<1.0	<1.0	<1.0	5.30	90.90
	04/07/2011	<1.0	<1.0	<1.0	<1.0	5.28	90.92
	07/18/2011	<1.0	<1.0	<1.0	<1.0	4.24	91.96
	10/07/2011	<1.0	<1.0	<1.0	<1.0	6.32	89.88
	01/18/2012	<1.0	<1.0	<1.0	<1.0	5.37	90.83
	04/13/2012	<1.0	<1.0	<1.0	<1.0	4.81	91.39
	07/12/2012	<1.0	<1.0	<1.0	<1.0	5.09	91.11
	10/25/2012	<1.0	<1.0	<1.0	<1.0	6.32	89.88
	01/08/2013	<1.0	<1.0	<1.0	<1.0	5.89	90.31
	04/18/2013	<1.0	<1.0	<1.0	<1.0	5.15	91.05
	07/16/2013	<1.0	<1.0	<1.0	<1.0	6.20	90.00
	10/03/2013	<1.0	<1.0	<1.0	<1.0	6.25	89.95
	11/18/2013	Survey - Not Sampled				5.24	90.88
	01/31/2014	<4.0	<4.0	<4.0	<4.0	5.04	91.16
	04/01/2014	<1.0	<1.0	<1.0	<1.0	4.84	91.28



TABLE 1 (Continued)
GROUNDWATER ANALYTICAL AND FIELD RESULTS
KARICH HELEN E UNIT #2/HERMAN 32-9K/HERMAN 32-10K
WELD COUNTY, COLORADO
KERR-MCGEE OIL & GAS ONSHORE LP

Well Name	Date	Benzene (ug/L)	Toluene (ug/L)	Ethylbenzene (ug/L)	Xylenes (ug/L)	Depth Water/ (Product Thickness) (ft bgs)	Relative GW Elev. (ft)
MW08	07/24/2014	<1.0	<1.0	<1.0	<1.0	4.03	92.09
	10/17/2014	<1.0	<1.0	<1.0	<1.0	4.68	91.44
MW09	11/29/2010	<1.0	<1.0	<1.0	<1.0	6.14	NA
	01/20/2011	<1.0	<1.0	<1.0	<1.0	6.50	NA
	04/07/2011	<1.0	<1.0	<1.0	<1.0	6.39	NA
	07/18/2011	<1.0	<1.0	<1.0	<1.0	5.36	NA
	10/07/2011	<1.0	<1.0	<1.0	<1.0	7.28	NA
	01/18/2012	<1.0	<1.0	<1.0	<1.0	6.67	NA
	04/13/2012	<1.0	<1.0	<1.0	<1.0	6.25	NA
	07/12/2012	<1.0	<1.0	<1.0	<1.0	6.37	NA
	10/25/2012	<1.0	<1.0	<1.0	<1.0	6.45	NA
	01/08/2013	<1.0	<1.0	<1.0	<1.0	6.64	NA
	04/18/2013	<1.0	<1.0	<1.0	<1.0	5.95	NA
	07/16/2013	Damaged - Not Sampled				Damaged	NA
	MW09 destroyed as of 10/3/2013						
MW10	11/29/2010	<1.0	<1.0	<1.0	<1.0	6.75	NA
	01/20/2011	<1.0	<1.0	<1.0	<1.0	7.00	NA
	04/07/2011	<1.0	<1.0	<1.0	<1.0	6.98	NA
	07/18/2011	<1.0	<1.0	<1.0	<1.0	6.04	NA
	10/07/2011	<1.0	<1.0	<1.0	<1.0	7.50	NA
	01/18/2012	<1.0	<1.0	<1.0	<1.0	7.10	NA
	04/13/2012	<1.0	<1.0	<1.0	<1.0	6.15	NA
	07/12/2012	<1.0	<1.0	<1.0	<1.0	6.80	NA
	10/25/2012	<1.0	<1.0	<1.0	<1.0	7.01	NA
	01/08/2013	<1.0	<1.0	<1.0	<1.0	7.16	NA
	04/18/2013	<1.0	<1.0	<1.0	<1.0	6.56	NA
	07/16/2013	Damaged - Not Sampled				Damaged	NA
	MW10 destroyed as of 10/3/2013						
CGWQS		5	1000	700	1400		

Notes: ug/L - micrograms per Liter
ft bgs - feet below ground surface
GW - Groundwater

Elev. - Elevation
Bold numbers indicate result exceeded standard.
< - less than

NA - Not Analyzed/Not Available
NM - Not Measured
CGWQS - Colorado Groundwater
Quality Standards

