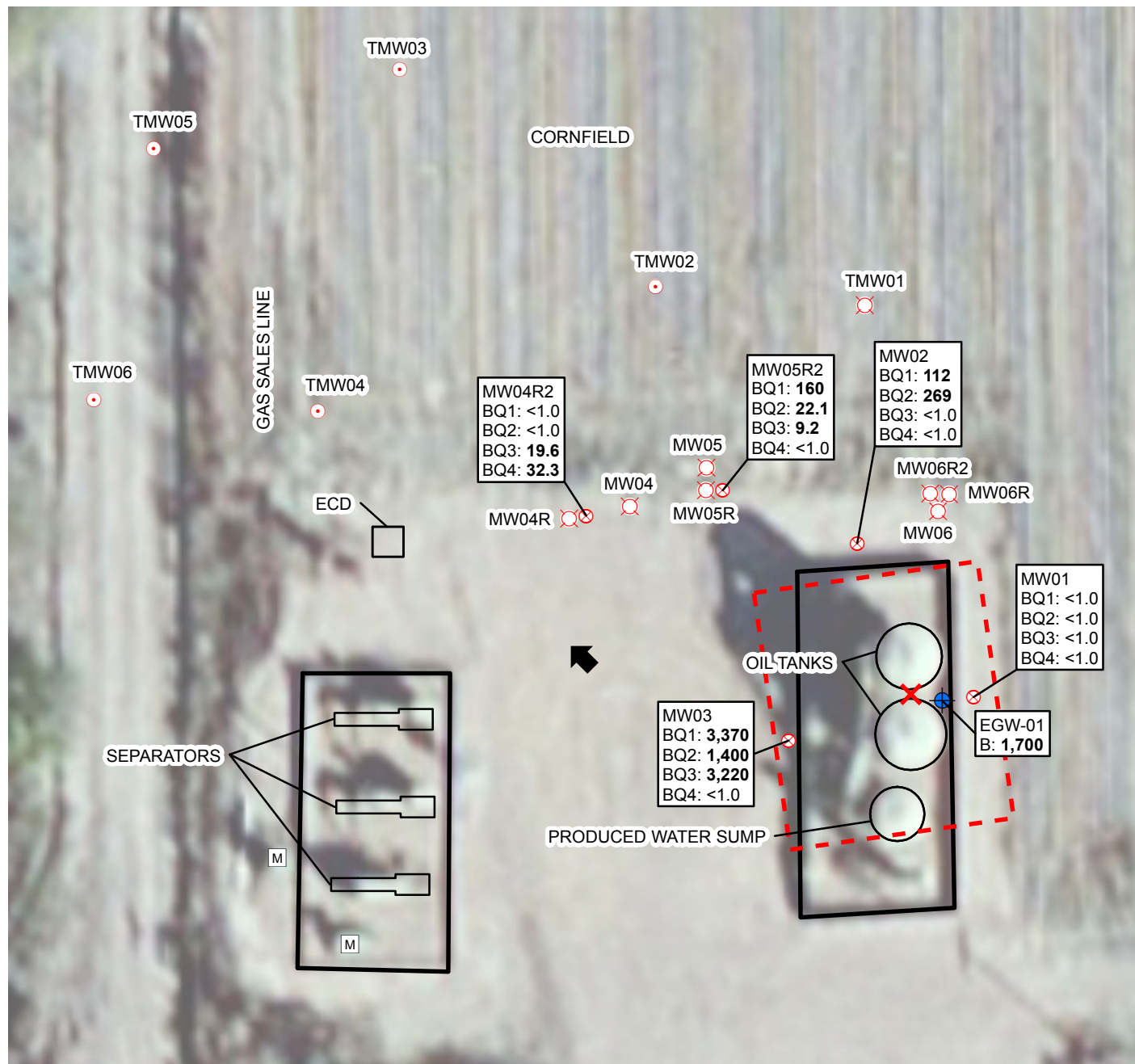


2014 ANNUAL PROJECT SUMMARY TABLE

Incident Date	Remediation No.	Well Name	API	Status	NFA Submitted	NFA Approved Date	Site Summary (monitoring/remediation/ wells installed or destroyed)	Wells Sampled (Last Quarter) 2014	Wells Exceeding 5 ug/L Benzene (Last Quarter Sampled 2014)	Benzene Range (ug/L) (Last Quarter 2014)	POC Established	2015 Recommendations	Well Reduction Request
2/1/2008	4219	HSR-Austin 16-26/ HSR-Elliott 15-26	05-123-15507	Assessment/ Remediation	NO	NA	Quarterly groundwater monitoring since April 2008. Carbon slurry (BOS 200) injection completed in December 2011. Temporary monitoring wells were removed from the monitoring program in 2012. Carbon Slurry (BOS 200) injection completed in November 2014.	MW01-MW03, MW04R2, MW05R2	MW04R2	ND - 32.3	NO	Additional monitoring wells will be installed downgradient of MW04R2 and MW05R2 in order to establish POC. Quarterly groundwater monitoring will continue.	NA

Notes:
NA - Not Applicable
ND - Non-Detect
NFA - No Further Action
POC - Point of Compliance



LEGEND

- ✕ RELEASE
- ⊗ MONITORING WELL
- ⊙ REMOVED FROM MONITORING PROGRAM
- ⊗ DESTROYED MONITORING WELL
- ⊕ GROUNDWATER SAMPLE
- M METER HOUSE
- ↑ SURVEYED GROUNDWATER FLOW DIRECTION
- EXCAVATION EXTENT
- BERM

ECD: EMISSION CONTROL DEVICE

GROUNDWATER SAMPLE ID
B: BENZENE CONCENTRATION
Q1-Q4: FIRST-FOURTH QUARTER 2014
ALL RESULTS IN MICROGRAMS PER LITER
BOLD INDICATES RESULT ABOVE STANDARD
<: LESS THAN LABORATORY REPORTING LIMIT

IMAGE COURTESY OF ESRI

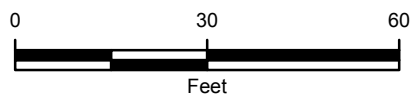


FIGURE 1
SITE MAP
HSR-AUSTIN 16-26/HSR-ELLIOT 15-26
SESE SEC 26-T4N-R66W
WELD COUNTY, COLORADO
KERR-MCGEE OIL & GAS ONSHORE LP



TABLE 1
GROUNDWATER ANALYTICAL AND FIELD RESULTS
HSR - AUSTIN 16-26/HSR - ELLIOT 15-26
WELD COUNTY, COLORADO
KERR-MCGEE OIL & GAS ONSHORE LP

Well Name	Date	Benzene (ug/L)	Toluene (ug/L)	Ethylbenzene (ug/L)	Xylenes (ug/L)	Depth Water/ (Product Thickness) (ft bgs)	Relative GW Elev. (ft)
EGW-01	02/06/2008	1700	2300	730	11000	NM	NA
MW01	04/07/2008	<1.0	<1.0	<1.0	<1.0	7.23	90.27
	07/23/2008	<1.0	<1.0	<1.0	<1.0	3.58	94.32
	10/03/2008	<1.0	<1.0	<1.0	<1.0	4.85	93.05
	01/22/2009	<1.0	<1.0	<1.0	<1.0	6.52	91.38
	04/16/2009	<1.0	<1.0	<1.0	<1.0	7.28	90.62
	07/22/2009	<1.0	<1.0	<1.0	<1.0	4.31	93.59
	10/06/2009	<1.0	<1.0	<1.0	<1.0	4.94	92.96
	01/18/2010	<1.0	<1.0	<1.0	<1.0	6.54	91.36
	03/17/2010	<1.0	<1.0	<1.0	<1.0	7.11	90.79
	06/21/2010	<1.0	<1.0	<1.0	<1.0	5.02	92.88
	09/14/2010	<1.0	<1.0	<1.0	<1.0	5.81	92.09
	12/17/2010	<1.0	<1.0	<1.0	<1.0	6.24	91.66
	03/09/2011	<1.0	<1.0	<1.0	<1.0	7.10	90.80
	06/27/2011	<1.0	<1.0	<1.0	<1.0	6.00	91.90
	09/08/2011	<1.0	<1.0	<1.0	<1.0	4.23	93.67
	12/15/2011	<1.0	<1.0	<1.0	<1.0	6.30	91.60
	03/09/2012	<1.0	<1.0	<1.0	<1.0	7.33	90.57
	06/08/2012	<1.0	<1.0	<1.0	<1.0	6.85	91.05
	09/20/2012	<1.0	<1.0	<1.0	<1.0	4.41	90.49
	12/26/2012	<1.0	<1.0	<1.0	<1.0	7.67	90.23
	03/26/2013	<1.0	<1.0	<1.0	<1.0	8.56	89.34
	06/26/2013	<1.0	<1.0	<1.0	<1.0	4.71	93.19
	09/10/2013	9.8	38	67	780	4.73	93.17
	11/04/2013	Surveyed - Not Sampled				5.09	91.91
	12/11/2013	<1.0	6.8	31.6	1.4	6.75	91.15
	03/12/2014	<1.0	49.5	1.7	75.2	7.53	90.37
	06/11/2014	<1.0	430	39.4	436	5.81	91.19
	09/18/2014	<1.0	<1.0	<1.0	<1.0	3.85	93.15
	12/04/2014	<1.0	<1.0	20.7	122	5.36	91.64
MW02	04/07/2008	<1.0	<1.0	5.3	9.4	6.43	89.93
	07/23/2008	100	<1.0	<1.0	2.4	3.30	93.56
	10/03/2008	4800	3.3	<1.0	83	4.30	92.56
	01/22/2009	57	1.9	<1.0	<1.0	5.84	91.02



TABLE 1 (Continued)
GROUNDWATER ANALYTICAL AND FIELD RESULTS
HSR - AUSTIN 16-26/HSR - ELLIOT 15-26
WELD COUNTY, COLORADO
KERR-MCGEE OIL & GAS ONSHORE LP

Well Name	Date	Benzene (ug/L)	Toluene (ug/L)	Ethylbenzene (ug/L)	Xylenes (ug/L)	Depth Water/ (Product Thickness) (ft bgs)	Relative GW Elev. (ft)
MW02	04/16/2009	1.0	<1.0	<1.0	<1.0	6.64	90.22
	07/22/2009	<1.0	<1.0	<1.0	<1.0	3.91	92.95
	10/06/2009	3.0	<1.0	<1.0	<1.0	4.38	92.48
	01/18/2010	2.8	<1.0	<1.0	<1.0	5.89	90.97
	03/17/2010	<1.0	<1.0	<1.0	<1.0	6.41	90.45
	06/21/2010	1.5	<1.0	<1.0	<1.0	4.41	92.45
	09/14/2010	<1.0	<1.0	<1.0	<1.0	4.23	92.63
	12/17/2010	<1.0	<1.0	<1.0	<1.0	5.64	91.22
	03/09/2011	<1.0	<1.0	<1.0	<1.0	6.42	90.44
	06/27/2011	<1.0	<1.0	<1.0	<1.0	5.95	90.91
	09/08/2011	<1.0	<1.0	<1.0	<1.0	3.71	93.15
	12/15/2011	<1.0	<1.0	<1.0	<1.0	5.64	91.22
	03/09/2012	<1.0	<1.0	<1.0	<1.0	6.68	90.18
	06/08/2012	<1.0	<1.0	<1.0	<1.0	6.55	90.31
	09/20/2012	<1.0	<1.0	<1.0	<1.0	6.92	89.94
	12/26/2012	<1.0	<1.0	<1.0	<1.0	7.09	89.77
	03/26/2013	<1.0	<1.0	<1.0	<1.0	7.96	88.90
	06/26/2013	<1.0	<1.0	<1.0	11	4.43	92.43
	09/10/2013	220	<1.0	5.4	<1.0	4.60	92.26
	11/04/2013	Surveyed - Not Sampled				4.64	91.42
	12/11/2013	2.0	4.6	16.0	31.4	6.12	90.74
	03/12/2014	112	262	9.9	105	6.86	90.00
	06/11/2014	269	421	41.7	323	5.34	90.72
	09/18/2014	<1.0	<1.0	<1.0	<1.0	3.34	92.72
	12/04/2014	<1.0	<1.0	<1.0	<1.0	4.87	91.19
MW03	04/07/2008	3.1	230	96	1300	7.90	89.84
	07/23/2008	4.5	<1.0	130	1700	4.49	93.81
	10/03/2008	5.8	<1.0	9.6	3.8	5.67	92.63
	01/22/2009	39	<1.0	<1.0	2.2	7.19	91.11
	04/16/2009	6.7	<1.0	<1.0	2.0	7.94	90.36
	07/22/2009	1.8	<1.0	4.8	3.9	5.32	92.98
	10/06/2009	54	<1.0	<1.0	<1.0	5.68	92.62
	01/18/2010	32	1.3	<1.0	<1.0	7.28	91.02
	03/17/2010	330	<1.0	2.8	<1.0	7.87	90.43
	06/21/2010	1500	<1.0	11	24	5.74	92.56



TABLE 1 (Continued)
GROUNDWATER ANALYTICAL AND FIELD RESULTS
HSR - AUSTIN 16-26/HSR - ELLIOT 15-26
WELD COUNTY, COLORADO
KERR-MCGEE OIL & GAS ONSHORE LP

Well Name	Date	Benzene (ug/L)	Toluene (ug/L)	Ethylbenzene (ug/L)	Xylenes (ug/L)	Depth Water/ (Product Thickness) (ft bgs)	Relative GW Elev. (ft)
MW03	09/14/2010	5900	220	49	310	5.59	92.71
	12/17/2010	1500	57	71	1300	6.96	91.34
	03/09/2011	260	<1.0	130	1100	7.76	90.54
	06/27/2011	250	<1.0	<1.0	33	6.36	91.94
	09/08/2011	210	<1.0	28	170	5.20	93.10
	12/15/2011	3.7	<1.0	<1.0	3.7	7.12	91.18
	03/09/2012	100	<1.0	8.0	12	PVC Blocked	NA
	04/17/2012	11	<1.0	<1.0	43	6.53	90.99
	06/08/2012	480	<1.0	<1.0	210	PVC Blocked	NA
	09/20/2012	7.1	<1.0	<1.0	8500	7.95	90.35
	12/26/2012	20	<1.0	<1.0	50	7.43	90.87
	03/26/2013	<1.0	<1.0	<1.0	310	8.98	89.32
	06/26/2013	<1.0	<1.0	<1.0	<1.0	5.30	93.00
	09/10/2013	6300	3.8	20	1300	5.09	93.21
	11/04/2013	Surveyed - Not Sampled				5.82	91.68
	12/11/2013	747	<1.0	<1.0	927	7.27	91.03
	03/12/2014	3370	<4.0	5.9	955	7.94	90.36
	06/11/2014	1400	<20.0	<20.0	786	6.31	91.19
	09/18/2014	3220	<20.0	<20.0	249	4.49	93.01
	12/04/2014	<1.0	<1.0	<1.0	<1.0	5.94	91.56
MW04	04/07/2008	<1.0	2.7	14	14	6.61	NA
MW04 destroyed as of 7/23/2008							
MW04R	10/03/2008	<1.0	<1.0	<1.0	<1.0	3.38	NA
	01/22/2009	<1.0	<1.0	<1.0	<1.0	4.99	NA
	04/16/2009	<1.0	<1.0	<1.0	<1.0	5.87	NA
MW04R destroyed as of 7/22/2009							
MW04R2	03/17/2010	970	390	180	1200	5.82	89.81
	06/21/2010	48	4.7	7.7	24	3.82	91.81
	09/14/2010	180	<1.0	9.9	2.1	3.78	91.85
	12/17/2010	2.8	<1.0	<1.0	2.5	4.91	90.72
	03/09/2011	2.0	<1.0	<1.0	<1.0	5.55	90.08
	06/27/2011	<1.0	<1.0	<1.0	<1.0	4.45	91.18
	09/08/2011	2.3	<1.0	<1.0	<1.0	3.32	92.31
	11/02/2011	2.2	<1.0	<1.0	<1.0	NM	NA
	12/15/2011	2.9	<1.0	<1.0	<1.0	4.91	90.72



TABLE 1 (Continued)
GROUNDWATER ANALYTICAL AND FIELD RESULTS
HSR - AUSTIN 16-26/HSR - ELLIOT 15-26
WELD COUNTY, COLORADO
KERR-MCGEE OIL & GAS ONSHORE LP

Well Name	Date	Benzene (ug/L)	Toluene (ug/L)	Ethylbenzene (ug/L)	Xylenes (ug/L)	Depth Water/ (Product Thickness) (ft bgs)	Relative GW Elev. (ft)
MW04R2	03/09/2012	3.5	<1.0	<1.0	<1.0	5.83	89.80
	06/08/2012	<1.0	<1.0	<1.0	<1.0	5.49	90.14
	09/20/2012	<1.0	<1.0	<1.0	<1.0	6.23	89.40
	12/26/2012	<1.0	<1.0	<1.0	<1.0	6.32	89.31
	03/26/2013	<1.0	<1.0	<1.0	<1.0	6.92	88.71
	06/26/2013	<1.0	<1.0	<1.0	<1.0	3.99	91.64
	09/10/2013	39	<1.0	<1.0	24	4.32	91.31
	11/04/2013	Surveyed - Not Sampled				5.25	90.65
	12/11/2013	<1.0	<1.0	<1.0	<1.0	5.31	90.32
	03/12/2014	<1.0	<1.0	<1.0	<1.0	5.93	89.70
	06/11/2014	<1.0	<1.0	<1.0	<1.0	5.57	90.33
	09/18/2014	19.6	<1.0	<1.0	<1.0	3.88	92.02
	12/04/2014	32.3	<1.0	<1.0	<1.0	5.20	90.70
MW05	04/07/2008	<1.0	<1.0	<1.0	<1.0	6.31	NA
MW05 destroyed as of 7/23/2008							
MW05R	10/03/2008	1900	<1.0	<1.0	20	2.95	NA
	01/22/2009	32	<1.0	6.5	11	4.57	NA
	04/16/2009	1.5	<1.0	<1.0	<1.0	5.31	NA
MW05R destroyed as of 7/22/2009							
MW05R2	03/17/2010	4.4	5.0	59	330	5.52	89.93
	06/21/2010	1.5	<1.0	21	110	3.39	92.06
	09/14/2010	<1.0	<1.0	18	72	3.35	92.10
	12/17/2010	<1.0	<1.0	3.7	22	4.57	90.88
	03/09/2011	1.4	<1.0	15	75	5.32	90.13
	06/27/2011	<1.0	<1.0	<1.0	66	4.70	90.75
	09/08/2011	<1.0	<1.0	1.3	6.8	2.87	92.58
	12/15/2011	<1.0	<1.0	<1.0	<1.0	4.58	90.87
	03/09/2012	40	<1.0	8.8	40	5.58	89.87
	06/08/2012	<1.0	<1.0	<1.0	<1.0	5.44	90.01
	09/20/2012	<1.0	<1.0	<1.0	3.0	5.85	89.60
	12/26/2012	<1.0	<1.0	<1.0	<1.0	5.97	89.48
	03/26/2013	<1.0	<1.0	<1.0	<1.0	6.72	88.73
	06/26/2013	<1.0	<1.0	<1.0	<1.0	3.57	91.88
	09/10/2013	260	<1.0	<1.0	<1.0	3.91	91.54
	11/04/2013	Surveyed - Not Sampled				4.73	90.99



TABLE 1 (Continued)
GROUNDWATER ANALYTICAL AND FIELD RESULTS
HSR - AUSTIN 16-26/HSR - ELLIOT 15-26
WELD COUNTY, COLORADO
KERR-MCGEE OIL & GAS ONSHORE LP

Well Name	Date	Benzene (ug/L)	Toluene (ug/L)	Ethylbenzene (ug/L)	Xylenes (ug/L)	Depth Water/ (Product Thickness) (ft bgs)	Relative GW Elev. (ft)
MW05R2	12/11/2013	2.3	<1.0	<1.0	<1.0	5.05	90.40
	03/12/2014	160	<1.0	<1.0	<1.0	5.71	89.74
	06/11/2014	22.1	<1.0	<1.0	<1.0	5.27	90.45
	09/18/2014	9.2	<1.0	<1.0	<1.0	3.46	92.26
	12/04/2014	Not Sampled				5.30	NA
	12/12/2014	<1.0	<1.0	<1.0	<1.0	5.94	89.78
MW06	04/07/2008	<1.0	<1.0	<1.0	<1.0	6.43	NA
MW06 destroyed as of 7/23/2008							
MW06R	10/03/2008	<1.0	<1.0	<1.0	<1.0	3.18	NA
	01/22/2009	<1.0	<1.0	<1.0	<1.0	5.03	NA
	04/16/2009	<1.0	<1.0	<1.0	<1.0	5.78	NA
MW06R destroyed as of 7/22/2009							
MW06R2	03/17/2010	<1.0	12	2.4	14	5.59	NA
	06/21/2010	<1.0	<1.0	<1.0	<1.0	3.91	NA
	09/14/2010	<1.0	<1.0	<1.0	<1.0	3.19	NA
	12/17/2010	<1.0	<1.0	<1.0	<1.0	4.63	NA
	03/09/2011	<1.0	<1.0	<1.0	<1.0	5.44	NA
	06/27/2011	<1.0	<1.0	<1.0	<1.0	4.74	NA
	09/08/2011	<1.0	<1.0	<1.0	<1.0	2.64	NA
	12/15/2011	Damaged - Not Sampled				Damaged	NA
MW06R2 destroyed as of 3/9/2012							
TMW01	03/17/2010	<1.0	83	12	58	NM	NA
TMW01 destroyed as of 6/21/2010							
TMW02	03/17/2010	<1.0	1.4	3.4	4.5	NM	NA
	10/27/2010	<1.0	<1.0	<1.0	<1.0	4.29	NA
	12/17/2010	<1.0	<1.0	<1.0	<1.0	4.94	NA
	03/09/2011	<1.0	<1.0	<1.0	<1.0	5.73	NA
	10/24/2011	<1.0	<1.0	<1.0	<1.0	4.47	NA
	01/31/2012	<1.0	<1.0	<1.0	<1.0	5.69	NA
	03/09/2012	<1.0	<1.0	<1.0	<1.0	6.16	NA
	12/26/2012	Removed from monitoring				NM	NA
TMW03	04/09/2010	1.3	<1.0	8.6	35	NM	NA
	10/27/2010	<1.0	<1.0	<1.0	<1.0	4.28	NA
	12/17/2010	<1.0	<1.0	<1.0	<1.0	5.08	NA
	03/09/2011	<1.0	<1.0	<1.0	<1.0	PVC Blocked	NA



TABLE 1 (Continued)
GROUNDWATER ANALYTICAL AND FIELD RESULTS
HSR - AUSTIN 16-26/HSR - ELLIOT 15-26
WELD COUNTY, COLORADO
KERR-MCGEE OIL & GAS ONSHORE LP

Well Name	Date	Benzene (ug/L)	Toluene (ug/L)	Ethylbenzene (ug/L)	Xylenes (ug/L)	Depth Water/ (Product Thickness) (ft bgs)	Relative GW Elev. (ft)
TMW03	10/24/2011	<1.0	<1.0	<1.0	<1.0	4.85	NA
	01/31/2012	<1.0	<1.0	<1.0	<1.0	5.94	NA
	03/09/2012	<1.0	<1.0	<1.0	<1.0	6.38	NA
	12/26/2012	Removed from monitoring				NM	NA
TMW04	04/09/2010	36	<1.0	1.1	6.6	NM	NA
	10/27/2010	<1.0	<1.0	<1.0	<1.0	4.05	NA
	12/17/2010	<1.0	<1.0	<1.0	<1.0	5.19	NA
	03/09/2011	1.6	<1.0	<1.0	<1.0	5.60	NA
	10/24/2011	<1.0	<1.0	<1.0	<1.0	4.80	NA
	01/31/2012	<1.0	<1.0	<1.0	<1.0	6.00	NA
	03/09/2012	<1.0	<1.0	<1.0	<1.0	6.48	NA
	12/26/2012	Removed from monitoring				NM	NA
TMW05	10/27/2010	<1.0	<1.0	<1.0	<1.0	4.11	NA
	12/17/2010	<1.0	<1.0	<1.0	<1.0	5.46	NA
	03/09/2011	<1.0	<1.0	<1.0	<1.0	6.33	NA
	10/24/2011	<1.0	<1.0	<1.0	<1.0	5.83	NA
	01/31/2012	<1.0	<1.0	<1.0	<1.0	6.88	NA
	03/09/2012	<1.0	<1.0	<1.0	<1.0	7.23	NA
	12/26/2012	Removed from monitoring				NM	NA
TMW06	10/27/2010	<1.0	<1.0	54	390	4.59	NA
	12/17/2010	3.7	<1.0	9.7	63	6.08	NA
	03/09/2011	<1.0	<1.0	<1.0	6.7	6.77	NA
	10/24/2011	<1.0	1.4	<1.0	<1.0	5.30	NA
	01/31/2012	<1.0	<1.0	<1.0	<1.0	6.39	NA
	03/09/2012	<1.0	<1.0	<1.0	<1.0	6.96	NA
	12/26/2012	Removed from monitoring				NM	NA
CGWQS		5	1000	700	1400		

Notes: ug/L - micrograms per Liter
ft bgs - feet below ground surface
GW - Groundwater

Elev. - Elevation
Bold numbers indicate result exceeded standard.
< - less than

NA - Not Analyzed/Not Available
NM - Not Measured
CGWQS - Colorado Groundwater Quality Standards

Results in red indicate data from samples collected after completion of carbon slurry injection.

