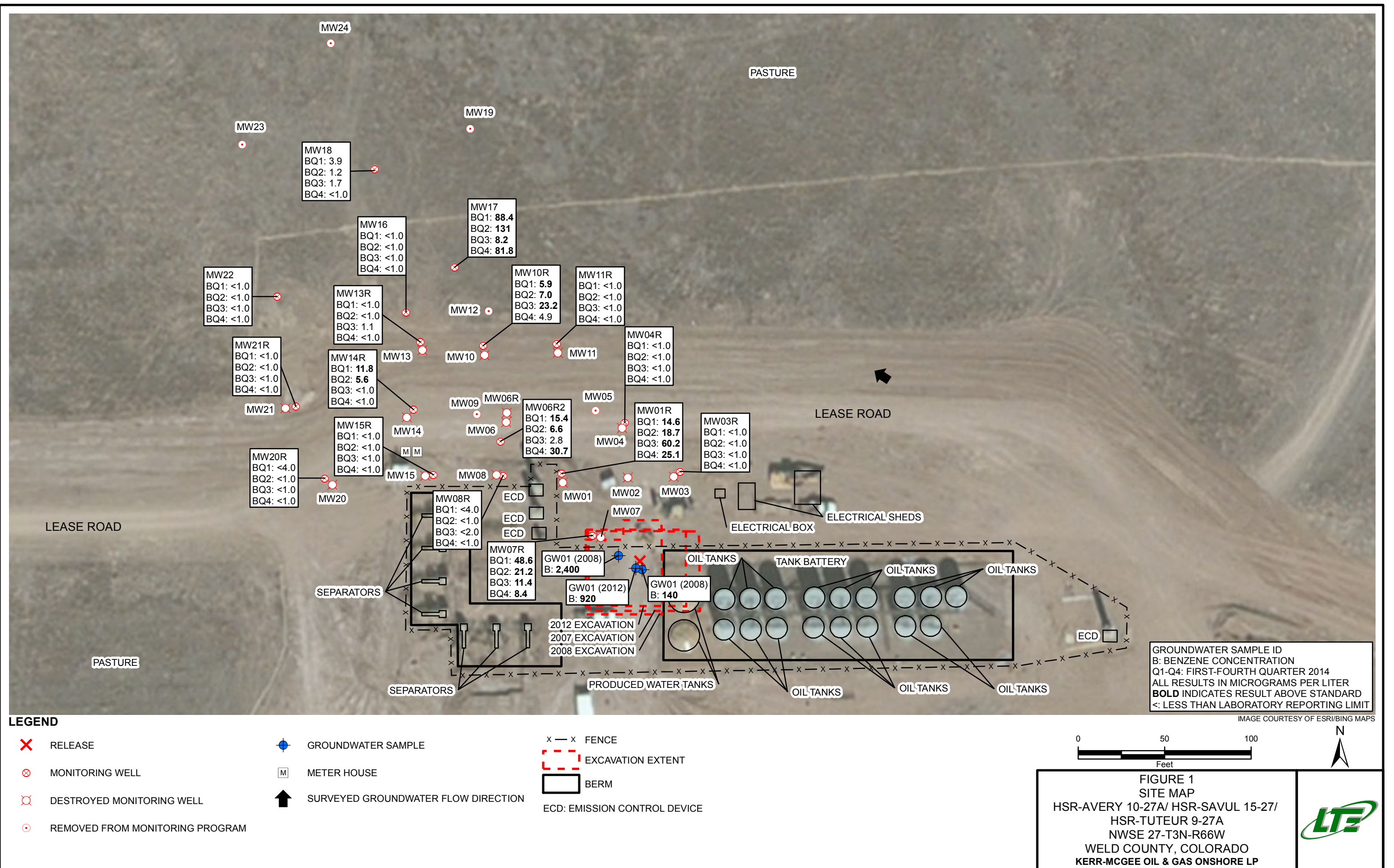


2014 ANNUAL PROJECT SUMMARY TABLE

Incident Date	Remediation No.	Well Name	API	Status	NFA Submitted	NFA Approved Date	Site Summary (monitoring/remediation/ wells installed or destroyed)	Wells Sampled (Last Quarter) 2014	Wells Exceeding 5 ug/L Benzene (Last Quarter Sampled 2014)	Benzene Range (ug/L) (Last Quarter 2014)	POC Established	2015 Recommendations	Well Reduction Request
12/12/2007 9/29/2008	4188	HSR-Avery 10-27A/ HSR-Savul 15-27/ HSR-Tuteur 9-27A	05-123-14164	Remediation	NO	NA	Quarterly groundwater monitoring since February 2008. A second release occurred at this site in September 2008. MW05 and MW09 were removed from monitoring in 2009. MW12 was removed from monitoring in 2011. MW01, MW02, MW03, MW07, MW08, and MW15 were abandoned in December 2011 due to tank battery construction. MW04, MW06, MW10, MW11, MW13, MW14, MW20, and MW21 were abandoned in February 2012 due to gathering line construction. Carbon slurry (BOS 200) was applied to the groundwater during the February 2012 excavation activities. MW01R, MW03R, MW04R, MW06R-MW08R, MW10R, MW11R, MW13R-MW15R, MW20R, and MW21R were installed in June/July 2012. MW19, MW23, and MW24 were removed from monitoring in 2013. MW06R was destroyed November 2013. MW06R2 was installed January 2014. Free product was purged bi-monthly from MW01R from September 2013 to March 2014 and discontinued when free product was no longer measurable.	MW01R, MW03R, MW04R, MW06R2, MW07R, MW08R, MW10R, MW11R, MW13R-MW18, MW20R-MW22	MW01R, MW06R2, MW07R, MW17	ND - 81.8	NO	Monitoring wells will be installed downgradient of MW17 in order to establish POC. Remedial options will be evaluated once POC is established. Quarterly groundwater monitoring will continue.	NA

Notes:  
NA - Not Applicable  
ND - Non-Detect  
NFA - No Further Action  
POC - Point of Compliance



**TABLE 1**  
**GROUNDWATER ANALYTICAL AND FIELD RESULTS**  
**HSR-AVERY 10-27A/ HSR-SAVUL 15-27/ HSR-TUTEUR 9-27A**  
**WELD COUNTY, COLORADO**  
**KERR-MCGEE OIL & GAS ONSHORE LP**

Well Name	Date	Benzene (ug/L)	Toluene (ug/L)	Ethylbenzene (ug/L)	Xylenes (ug/L)	Depth Water/ (Product Thickness) (ft bgs)	Relative GW Elev. (ft)
GW01	01/07/2008	140	1300	37	1700	NM	NA
	09/26/2008	2400	4600	67	2100	NM	NA
	02/08/2012	920	420	120	2000	NM	NA
MW01	02/20/2008	460	45	200	2800	7.08	NA
	05/08/2008	470	72	210	2800	6.95	NA
	08/26/2008	140	44	160	1600	4.70	NA
	11/14/2008	200	51	170	1800	5.66	NA
	02/17/2009	420	24	260	3100	5.74	NA
	05/15/2009	450	3.4	250	2800	4.75	NA
	08/26/2009	470	25	270	2200	6.54	NA
	11/18/2009	200	2.0	130	890	6.34	NA
	02/04/2010	450	13	180	1400	6.42	NA
	05/19/2010	290	2.2	120	480	4.23	NA
	08/13/2010	34	7.8	160	1100	4.97	NA
	11/11/2010	24	2.2	160	390	5.51	NA
	02/16/2011	200	1.1	220	510	5.54	NA
	05/24/2011	38	1.4	160	450	3.65	NA
	08/19/2011	280	1.1	160	370	6.42	NA
	11/19/2011	450	12	160	830	6.16	NA
MW01 destroyed as of 12/1/2011							
MW01R	08/21/2012	<1.0	15	39	370	7.45	89.35
	11/29/2012	<1.0	<1.0	<1.0	170	7.70	89.10
	02/28/2013	<1.0	<1.0	<1.0	<1.0	6.82	89.98
	05/13/2013	210	3.6	47	300	5.38	91.42
	08/29/2013	Product - Not Sampled				7.50 (0.04)	89.30
	11/07/2013	7.4	<1.0	12.1	207	5.97	90.83
	11/18/2013	Surveyed - Not Sampled				6.37	90.76
	02/18/2014	14.6	<1.0	31.6	326	5.91	90.89
	05/13/2014	18.7	<1.0	20.8	201	5.77	NA
	07/29/2014	60.2	<1.0	88.2	799	10.09	NA
	11/05/2014	25.1	<1.0	27.0	178	10.31	NA
MW02	02/20/2008	<1.0	1.4	180	2400	6.60	NA
	05/08/2008	<10	<10	95	1200	6.65	NA
	08/26/2008	23	<1.0	63	410	4.25	NA
	11/14/2008	8.0	<1.0	55	280	5.24	NA



**TABLE 1 (Continued)**  
**GROUNDWATER ANALYTICAL AND FIELD RESULTS**  
**HSR-AVERY 10-27A/ HSR-SAVUL 15-27/ HSR-TUTEUR 9-27A**  
**WELD COUNTY, COLORADO**  
**KERR-MCGEE OIL & GAS ONSHORE LP**

Well Name	Date	Benzene (ug/L)	Toluene (ug/L)	Ethylbenzene (ug/L)	Xylenes (ug/L)	Depth Water/ (Product Thickness) (ft bgs)	Relative GW Elev. (ft)
MW02	02/17/2009	5.1	<1.0	36	360	5.40	NA
	05/15/2009	5.1	<1.0	84	480	4.41	NA
	08/26/2009	1.6	<1.0	5.2	47	6.19	NA
	11/18/2009	<1.0	<1.0	5.0	43	5.77	NA
	02/04/2010	1.4	<1.0	21	130	5.88	NA
	05/19/2010	15	<1.0	14	32	3.74	NA
	08/13/2010	3.5	<1.0	24	150	4.44	NA
	11/11/2010	<1.0	<1.0	6.7	29	5.03	NA
	02/16/2011	<1.0	<1.0	<1.0	<1.0	5.02	NA
	05/24/2011	<1.0	<1.0	<1.0	<1.0	3.15	NA
	08/19/2011	<1.0	<1.0	<1.0	<1.0	5.90	NA
	11/19/2011	<1.0	<1.0	<1.0	7.7	5.74	NA
MW02 destroyed as of 12/1/2011							
MW03	02/20/2008	<1.0	<1.0	<1.0	<1.0	6.60	NA
	05/08/2008	<1.0	<1.0	<1.0	<1.0	6.40	NA
	08/26/2008	<1.0	<1.0	<1.0	<1.0	4.23	NA
	11/14/2008	<1.0	<1.0	<1.0	<1.0	5.13	NA
	02/17/2009	<1.0	<1.0	<1.0	<1.0	5.35	NA
	05/15/2009	<1.0	<1.0	<1.0	<1.0	3.99	NA
	08/26/2009	<1.0	<1.0	<1.0	<1.0	5.88	NA
	11/18/2009	<1.0	<1.0	<1.0	<1.0	5.89	NA
	02/04/2010	<1.0	<1.0	<1.0	<1.0	5.84	NA
	05/19/2010	<1.0	<1.0	<1.0	<1.0	3.80	NA
	08/13/2010	<1.0	<1.0	<1.0	<1.0	4.47	NA
	11/11/2010	<1.0	<1.0	<1.0	<1.0	5.05	NA
	02/16/2011	<1.0	<1.0	<1.0	<1.0	5.05	NA
	05/24/2011	<1.0	<1.0	<1.0	<1.0	3.21	NA
	08/19/2011	3.4	<1.0	1.5	12	5.86	NA
	11/19/2011	<1.0	<1.0	<1.0	<1.0	5.81	NA
MW03 destroyed as of 12/1/2011							
MW03R	08/21/2012	<1.0	<1.0	<1.0	<1.0	7.32	90.08
	11/29/2012	<1.0	<1.0	<1.0	<1.0	7.01	90.39
	02/28/2013	<1.0	<1.0	<1.0	<1.0	7.06	90.34
	05/13/2013	<1.0	<1.0	<1.0	<1.0	5.66	91.74
	08/29/2013	<1.0	<1.0	<1.0	<1.0	7.65	89.75



**TABLE 1 (Continued)**  
**GROUNDWATER ANALYTICAL AND FIELD RESULTS**  
**HSR-AVERY 10-27A/ HSR-SAVUL 15-27/ HSR-TUTEUR 9-27A**  
**WELD COUNTY, COLORADO**  
**KERR-MCGEE OIL & GAS ONSHORE LP**

Well Name	Date	Benzene (ug/L)	Toluene (ug/L)	Ethylbenzene (ug/L)	Xylenes (ug/L)	Depth Water/ (Product Thickness) (ft bgs)	Relative GW Elev. (ft)
MW03R	11/07/2013	<1.0	<1.0	<1.0	<1.0	6.26	91.14
	11/18/2013	Surveyed - Not Sampled				5.98	91.10
	02/18/2014	<1.0	<1.0	<1.0	<1.0	6.24	91.16
	05/13/2014	<1.0	<1.0	<1.0	<1.0	5.67	91.89
	07/29/2014	<1.0	<1.0	<1.0	<1.0	6.90	90.66
	11/05/2014	<1.0	<1.0	<1.0	<1.0	7.12	90.44
MW04	05/08/2008	<1.0	<1.0	<1.0	<1.0	5.33	NA
	08/26/2008	<1.0	<1.0	<1.0	<1.0	3.18	NA
	11/14/2008	<1.0	<1.0	<1.0	<1.0	4.14	NA
	02/17/2009	<1.0	<1.0	<1.0	<1.0	4.31	NA
	05/15/2009	<1.0	<1.0	<1.0	<1.0	4.19	NA
	08/26/2009	<1.0	<1.0	<1.0	<1.0	6.18	NA
	11/18/2009	<1.0	<1.0	<1.0	<1.0	4.91	NA
	02/04/2010	<1.0	<1.0	<1.0	<1.0	4.80	NA
	05/19/2010	<1.0	<1.0	<1.0	<1.0	2.79	NA
	08/13/2010	<1.0	<1.0	<1.0	<1.0	3.51	NA
	11/11/2010	<1.0	<1.0	<1.0	<1.0	4.10	NA
	02/16/2011	<1.0	<1.0	<1.0	<1.0	4.05	NA
	05/24/2011	<1.0	<1.0	<1.0	<1.0	2.22	NA
	08/19/2011	<1.0	<1.0	<1.0	<1.0	4.94	NA
	11/19/2011	<1.0	<1.0	<1.0	<1.0	4.76	NA
	02/17/2012	<1.0	<1.0	<1.0	<1.0	4.43	NA
MW04 destroyed as of 2/18/2012							
MW04R	08/21/2012	<1.0	<1.0	<1.0	<1.0	7.27	89.68
	11/29/2012	<1.0	<1.0	<1.0	<1.0	6.91	90.04
	02/28/2013	<1.0	<1.0	<1.0	<1.0	7.08	89.87
	05/13/2013	<1.0	<1.0	<1.0	<1.0	5.63	91.32
	08/29/2013	<1.0	<1.0	<1.0	<1.0	7.64	89.31
	11/07/2013	<1.0	<1.0	<1.0	<1.0	6.22	90.73
	11/18/2013	Surveyed - Not Sampled				5.63	90.72
	02/18/2014	<1.0	<1.0	<1.0	<1.0	6.16	90.79
	05/13/2014	<1.0	<1.0	<1.0	<1.0	6.41	90.84
	07/29/2014	<1.0	<1.0	<1.0	<1.0	7.06	90.19
	11/05/2014	<1.0	<1.0	<1.0	<1.0	7.21	90.04
MW05	05/08/2008	56	5.6	39	440	5.59	NA



**TABLE 1 (Continued)**  
**GROUNDWATER ANALYTICAL AND FIELD RESULTS**  
**HSR-AVERY 10-27A/ HSR-SAVUL 15-27/ HSR-TUTEUR 9-27A**  
**WELD COUNTY, COLORADO**  
**KERR-MCGEE OIL & GAS ONSHORE LP**

Well Name	Date	Benzene (ug/L)	Toluene (ug/L)	Ethylbenzene (ug/L)	Xylenes (ug/L)	Depth Water/ (Product Thickness) (ft bgs)	Relative GW Elev. (ft)
MW05	08/26/2008	24	<1.0	3.1	43	3.49	NA
	11/14/2008	38	13	36	250	4.49	NA
	02/17/2009	170	<1.0	22	270	4.41	NA
	05/15/2009	70	2.9	5.7	570	3.32	NA
	08/26/2009	Removed from monitoring				NM	NA
MW06	05/08/2008	820	9.2	200	3200	6.12	NA
	08/26/2008	11	9.3	39	350	3.94	NA
	11/14/2008	210	36	120	1500	5.85	NA
	02/17/2009	140	32	110	1400	5.21	NA
	05/15/2009	190	33	110	1300	3.82	NA
	08/26/2009	30	37	92	780	5.91	NA
	11/18/2009	80	18	75	800	5.72	NA
	02/04/2010	86	26	100	1100	5.73	NA
	05/19/2010	160	43	110	1000	3.53	NA
	08/13/2010	13	48	61	460	5.40	NA
	11/11/2010	<1.0	<1.0	6.6	30	5.41	NA
	02/16/2011	14	1.7	38	100	5.39	NA
	05/24/2011	5.5	2.7	44	140	3.49	NA
	08/19/2011	90	1.3	96	270	6.27	NA
	11/19/2011	26	20	60	270	6.08	NA
	02/17/2012	10	9.2	46	270	5.23	NA
	MW06 destroyed as of 2/18/2012						
MW06R	08/21/2012	15	41	100	990	7.20	NA
	11/29/2012	18	1.4	30	400	6.82	NA
	02/28/2013	45	1.6	100	560	6.95	NA
	05/13/2013	43	3.3	76	390	5.42	NA
	08/29/2013	23	<1.0	27	85	7.54	NA
	MW06R destroyed as of 11/7/2013						
MW06R2	02/18/2014	15.4	138	58.8	893	5.57	NA
	05/13/2014	6.6	27.6	9.2	140	4.81	NA
	07/29/2014	2.8	6.2	2.3	51.6	6.62	NA
	11/05/2014	30.7	16.6	79.2	897	7.30	NA
MW07	06/18/2008	4300	2500	86	5500	6.33	NA
	08/26/2008	730	250	43	680	4.70	NA
	11/14/2008	3300	1600	170	2200	5.56	NA



**TABLE 1 (Continued)**  
**GROUNDWATER ANALYTICAL AND FIELD RESULTS**  
**HSR-AVERY 10-27A/ HSR-SAVUL 15-27/ HSR-TUTEUR 9-27A**  
**WELD COUNTY, COLORADO**  
**KERR-MCGEE OIL & GAS ONSHORE LP**

Well Name	Date	Benzene (ug/L)	Toluene (ug/L)	Ethylbenzene (ug/L)	Xylenes (ug/L)	Depth Water/ (Product Thickness) (ft bgs)	Relative GW Elev. (ft)
MW07	02/17/2009	1500	520	150	2300	5.65	NA
	05/15/2009	1500	63	63	1500	4.16	NA
	08/26/2009	1700	16	120	1300	6.34	NA
	11/18/2009	1200	11	120	1600	6.30	NA
	02/04/2010	1800	11	150	2000	6.30	NA
	05/19/2010	1200	17	160	1400	4.24	NA
	08/13/2010	910	2.8	130	600	4.84	NA
	11/11/2010	280	2.3	93	390	5.50	NA
	02/16/2011	97	<1.0	92	470	5.47	NA
	05/24/2011	110	3.5	14	170	3.57	NA
	08/19/2011	640	29	110	260	6.28	NA
	11/19/2011	780	3.7	160	350	6.13	NA
MW07 destroyed as of 12/1/2011							
MW07R	08/21/2012	2.1	<1.0	<1.0	2.9	7.25	89.80
	11/29/2012	77	4.1	29	120	6.59	90.46
	02/28/2013	180	5.8	110	420	6.62	90.43
	05/13/2013	760	3.2	64	260	5.24	91.81
	08/29/2013	510	<1.0	19	130	7.20	89.85
	11/07/2013	128	2.4	12.0	121	5.83	91.22
	11/18/2013	Surveyed - Not Sampled				6.42	91.16
	02/18/2014	48.6	3.5	16.2	203	5.78	91.27
	05/13/2014	21.2	<1.0	3.0	38.0	5.45	NA
	07/29/2014	11.4	1.6	24.6	273	9.71	NA
	11/05/2014	8.4	<1.0	4.0	45.6	9.93	NA
MW08	06/18/2008	43	870	65	4300	6.17	NA
	08/26/2008	64	250	170	2900	4.00	NA
	11/14/2008	27	1400	240	3100	5.02	NA
	02/17/2009	29	800	290	4300	5.05	NA
	05/15/2009	100	230	250	3200	3.77	NA
	08/26/2009	40	990	280	3700	5.61	NA
	11/18/2009	28	53	140	1300	5.72	NA
	02/04/2010	26	380	290	1600	5.75	NA
	05/19/2010	1.8	37	34	300	3.36	NA
	08/13/2010	17	930	220	2400	4.11	NA
	11/11/2010	<1.0	530	360	2300	4.75	NA



**TABLE 1 (Continued)**  
**GROUNDWATER ANALYTICAL AND FIELD RESULTS**  
**HSR-AVERY 10-27A/ HSR-SAVUL 15-27/ HSR-TUTEUR 9-27A**  
**WELD COUNTY, COLORADO**  
**KERR-MCGEE OIL & GAS ONSHORE LP**

Well Name	Date	Benzene (ug/L)	Toluene (ug/L)	Ethylbenzene (ug/L)	Xylenes (ug/L)	Depth Water/ (Product Thickness) (ft bgs)	Relative GW Elev. (ft)
MW08	02/16/2011	11	120	430	2300	4.69	NA
	05/24/2011	13	740	300	2900	2.78	NA
	08/19/2011	25	1000	200	3900	5.62	NA
	11/19/2011	17	320	360	3000	5.32	NA
MW08 destroyed as of 12/1/2011							
MW08R	08/21/2012	<1.0	68	110	1100	7.52	89.40
	11/29/2012	4.1	200	200	2600	6.95	89.97
	02/28/2013	3.9	200	230	2500	7.13	89.79
	05/13/2013	3.8	190	210	3200	5.63	91.29
	08/29/2013	2.2	400	250	3300	7.73	89.19
	11/07/2013	<1.0	190	169	2130	6.25	90.67
	11/18/2013	Surveyed - Not Sampled				6.15	90.64
	02/18/2014	<4.0	382	277	2300	5.92	91.00
	05/13/2014	<1.0	163	106	934	5.16	NA
	07/29/2014	<2.0	176	160	2740	9.57	NA
	11/05/2014	<1.0	131	145	1760	9.73	NA
MW09	06/18/2008	63	890	270	5000	5.94	NA
	08/26/2008	4.0	260	130	2700	3.31	NA
	11/14/2008	29	930	220	3000	4.43	NA
	02/17/2009	33	890	290	4000	4.45	NA
	05/15/2009	28	550	110	3300	3.38	NA
	08/26/2009	Removed from monitoring				NM	NA
MW10	06/18/2008	320	<1.0	44	5700	5.63	NA
	08/26/2008	62	<1.0	<1.0	34	3.45	NA
	11/14/2008	150	<1.0	66	360	4.52	NA
	02/17/2009	40	<1.0	<1.0	2.2	4.82	NA
	05/15/2009	<1.0	<1.0	<1.0	<1.0	3.75	NA
	08/26/2009	210	<1.0	14	36	1.86	NA
	11/18/2009	94	<1.0	13	8.7	5.30	NA
	02/04/2010	110	<1.0	45	160	5.34	NA
	05/19/2010	83	<1.0	<1.0	2.8	3.01	NA
	08/13/2010	99	<1.0	7.2	16	3.95	NA
	11/11/2010	10	<1.0	<1.0	<1.0	4.47	NA
	02/16/2011	<1.0	<1.0	<1.0	<1.0	4.43	NA
	05/24/2011	<1.0	<1.0	<1.0	<1.0	2.48	NA





**TABLE 1 (Continued)**  
**GROUNDWATER ANALYTICAL AND FIELD RESULTS**  
**HSR-AVERY 10-27A/ HSR-SAVUL 15-27/ HSR-TUTEUR 9-27A**  
**WELD COUNTY, COLORADO**  
**KERR-MCGEE OIL & GAS ONSHORE LP**

Well Name	Date	Benzene (ug/L)	Toluene (ug/L)	Ethylbenzene (ug/L)	Xylenes (ug/L)	Depth Water/ (Product Thickness) (ft bgs)	Relative GW Elev. (ft)
MW10	08/19/2011	<b>66</b>	<1.0	5.1	8.1	5.36	NA
	11/19/2011	<1.0	<1.0	<1.0	<1.0	5.05	NA
	02/17/2012	<1.0	<1.0	<1.0	<1.0	3.98	NA
	MW10 destroyed as of 2/18/2012						
MW10R	08/21/2012	1.7	<1.0	8.4	4.6	4.80	88.83
	11/29/2012	<1.0	<1.0	<1.0	<1.0	4.41	89.22
	02/28/2013	<1.0	<1.0	<1.0	<1.0	4.48	89.15
	05/13/2013	<b>5.6</b>	1.2	70	150	3.01	90.62
	08/29/2013	<1.0	<1.0	<1.0	<1.0	5.21	88.42
	11/07/2013	3.6	<1.0	44.6	104	3.70	89.93
	11/18/2013	Surveyed - Not Sampled				3.89	89.88
	02/18/2014	<b>5.9</b>	<1.0	73.9	334	3.55	90.08
	05/13/2014	<b>7.0</b>	<1.0	54.7	205	-0.55	94.32
	07/29/2014	<b>23.2</b>	<1.0	64.9	323	4.51	89.26
	11/05/2014	4.9	<1.0	27.3	115	4.49	89.28
MW11	06/18/2008	1.3	2.5	47	300	5.48	NA
	08/26/2008	<1.0	<1.0	<1.0	13	3.50	NA
	11/14/2008	<1.0	<1.0	31	37	4.61	NA
	02/17/2009	<1.0	<1.0	72	88	4.78	NA
	05/15/2009	<1.0	<1.0	<1.0	<1.0	5.54	NA
	08/26/2009	<1.0	<1.0	60	72	1.77	NA
	11/18/2009	<1.0	2.4	43	130	5.25	NA
	02/04/2010	<1.0	<1.0	5.9	19	5.20	NA
	05/19/2010	<1.0	<1.0	19	64	3.09	NA
	08/13/2010	<1.0	<1.0	<1.0	<1.0	3.94	NA
	11/11/2010	<1.0	<1.0	<1.0	<1.0	4.54	NA
	02/16/2011	<1.0	<1.0	<1.0	<1.0	4.46	NA
	05/24/2011	<1.0	<1.0	<1.0	<1.0	2.54	NA
	08/19/2011	<1.0	<1.0	1.5	2.4	5.34	NA
	11/19/2011	<1.0	<1.0	<1.0	<1.0	5.08	NA
	MW11 destroyed as of 2/17/2012						
MW11R	08/21/2012	<1.0	<1.0	<1.0	<1.0	4.60	88.99
	11/29/2012	<1.0	<1.0	<1.0	<1.0	4.12	89.47
	02/28/2013	<1.0	<1.0	<1.0	<1.0	4.26	89.33
	05/13/2013	<1.0	<1.0	12	110	2.83	90.76



**TABLE 1 (Continued)**  
**GROUNDWATER ANALYTICAL AND FIELD RESULTS**  
**HSR-AVERY 10-27A/ HSR-SAVUL 15-27/ HSR-TUTEUR 9-27A**  
**WELD COUNTY, COLORADO**  
**KERR-MCGEE OIL & GAS ONSHORE LP**

Well Name	Date	Benzene (ug/L)	Toluene (ug/L)	Ethylbenzene (ug/L)	Xylenes (ug/L)	Depth Water/ (Product Thickness) (ft bgs)	Relative GW Elev. (ft)
MW11R	08/29/2013	<1.0	<1.0	<1.0	<1.0	5.00	88.59
	11/07/2013	<1.0	<1.0	4.7	49.2	3.47	90.12
	11/18/2013	Surveyed - Not Sampled				3.65	90.08
	02/18/2014	<1.0	<1.0	22.0	190	3.34	90.25
	05/13/2014	<1.0	<1.0	10.7	76.3	2.76	90.97
	07/29/2014	<1.0	<1.0	1.5	8.7	4.23	89.50
	11/05/2014	<1.0	<1.0	4.6	29.1	4.29	89.44
MW12	08/26/2008	<b>250</b>	<1.0	45	250	3.33	NA
	11/14/2008	<b>34</b>	<1.0	22	110	3.63	NA
	02/17/2009	<b>19</b>	<1.0	6.6	67	3.81	NA
	05/15/2009	<1.0	<1.0	<1.0	<1.0	2.62	NA
	08/26/2009	<1.0	<1.0	<1.0	2.4	1.78	NA
	11/18/2009	<1.0	<1.0	<1.0	<1.0	5.28	NA
	02/04/2010	2.2	<1.0	<1.0	<1.0	5.22	NA
	05/19/2010	<b>17</b>	<1.0	1.7	8.4	3.03	NA
	08/13/2010	2.0	<1.0	<1.0	<1.0	4.03	NA
	11/11/2010	<1.0	<1.0	<1.0	<1.0	4.55	NA
	02/16/2011	<1.0	<1.0	<1.0	<1.0	4.45	NA
	05/24/2011	<1.0	<1.0	<1.0	<1.0	2.54	NA
	08/19/2011	Removed from monitoring				NM	NA
MW12R	11/18/2013	Surveyed - Not Sampled				3.90	89.60
MW13	08/26/2008	<b>74</b>	1.6	18	340	3.15	NA
	11/14/2008	<1.0	<1.0	<1.0	<1.0	4.43	NA
	02/17/2009	<b>21</b>	<1.0	4.2	43	4.38	NA
	05/15/2009	<b>17</b>	<1.0	<1.0	<1.0	3.56	NA
	08/26/2009	<1.0	<1.0	<1.0	<1.0	5.26	NA
	11/18/2009	<1.0	<1.0	<1.0	<1.0	5.15	NA
	02/04/2010	<1.0	<1.0	<1.0	<1.0	5.15	NA
	05/19/2010	<b>11</b>	<1.0	<1.0	<1.0	2.89	NA
	08/13/2010	2.9	<1.0	<1.0	<1.0	3.85	NA
	11/11/2010	1.2	<1.0	<1.0	<1.0	4.38	NA
	02/16/2011	<1.0	<1.0	<1.0	<1.0	4.25	NA
	05/24/2011	<1.0	<1.0	<1.0	<1.0	2.35	NA
	08/19/2011	<b>15</b>	<1.0	16	14	5.20	NA



**TABLE 1 (Continued)**  
**GROUNDWATER ANALYTICAL AND FIELD RESULTS**  
**HSR-AVERY 10-27A/ HSR-SAVUL 15-27/ HSR-TUTEUR 9-27A**  
**WELD COUNTY, COLORADO**  
**KERR-MCGEE OIL & GAS ONSHORE LP**

Well Name	Date	Benzene (ug/L)	Toluene (ug/L)	Ethylbenzene (ug/L)	Xylenes (ug/L)	Depth Water/ (Product Thickness) (ft bgs)	Relative GW Elev. (ft)
MW13	11/19/2011	<1.0	<1.0	<1.0	<1.0	4.91	NA
	02/17/2012	<1.0	<1.0	<1.0	<1.0	4.07	NA
MW13 destroyed as of 2/18/2012							
MW13R	08/21/2012	1.3	<1.0	<1.0	6.3	4.72	88.23
	11/29/2012	<1.0	<1.0	<1.0	12	4.21	88.74
	02/28/2013	<1.0	<1.0	<1.0	<1.0	4.42	88.53
	05/13/2013	<1.0	<1.0	33	37	PVC Bent	NA
	08/29/2013	<1.0	<1.0	4.0	<1.0	PVC Bent	NA
	11/07/2013	<1.0	<1.0	23.2	104	3.31	89.74
	11/18/2013	Surveyed - Not Sampled				3.39	89.69
	02/18/2014	<1.0	<1.0	6.6	3.2	3.15	89.90
	05/13/2014	<1.0	<1.0	20.8	21.9	2.36	90.72
	07/29/2014	1.1	<1.0	20.3	77.4	4.06	89.02
	11/05/2014	<1.0	<1.0	5.4	3.1	3.62	89.46
MW14	08/26/2008	<b>22</b>	<1.0	1.7	50	3.38	NA
	11/14/2008	2.3	<1.0	8.1	21	4.58	NA
	02/17/2009	<b>14</b>	<1.0	37	42	4.61	NA
	05/15/2009	3.7	<1.0	8.6	5.1	3.43	NA
	08/26/2009	<b>5.9</b>	<1.0	6.8	16	5.01	NA
	11/18/2009	<b>18</b>	<1.0	35	140	5.38	NA
	02/04/2010	<b>8.0</b>	<1.0	12	3.8	5.50	NA
	05/19/2010	<b>6.4</b>	<1.0	5.1	<1.0	3.22	NA
	08/13/2010	2.3	<1.0	<1.0	<1.0	4.14	NA
	11/11/2010	<1.0	<1.0	2.4	<1.0	4.75	NA
	02/16/2011	<1.0	<1.0	<1.0	<1.0	4.68	NA
	05/24/2011	<1.0	<1.0	<1.0	<1.0	2.65	NA
	08/19/2011	<b>33</b>	<1.0	2.3	<1.0	5.53	NA
	11/19/2011	<1.0	<1.0	<1.0	<1.0	5.24	NA
	02/17/2012	<1.0	<1.0	<1.0	<1.0	4.34	NA
MW14 destroyed as of 2/18/2012							
MW14R	08/21/2012	4.6	<1.0	6.8	38	6.90	88.99
	11/29/2012	<1.0	<1.0	<1.0	79	6.51	89.38
	02/28/2013	<1.0	<1.0	<1.0	67	6.64	89.25
	05/13/2013	2.1	<1.0	<1.0	<1.0	5.06	90.83
	08/29/2013	<b>7.5</b>	<1.0	<1.0	<1.0	7.25	88.64



**TABLE 1 (Continued)**  
**GROUNDWATER ANALYTICAL AND FIELD RESULTS**  
**HSR-AVERY 10-27A/ HSR-SAVUL 15-27/ HSR-TUTEUR 9-27A**  
**WELD COUNTY, COLORADO**  
**KERR-MCGEE OIL & GAS ONSHORE LP**

Well Name	Date	Benzene (ug/L)	Toluene (ug/L)	Ethylbenzene (ug/L)	Xylenes (ug/L)	Depth Water/ (Product Thickness) (ft bgs)	Relative GW Elev. (ft)
MW14R	11/07/2013	<1.0	<1.0	<1.0	<1.0	5.76	90.13
	11/18/2013	Surveyed - Not Sampled				5.10	90.15
	02/18/2014	<b>11.8</b>	<1.0	18.8	53.1	5.58	90.31
	05/13/2014	<b>5.6</b>	<1.0	7.0	16.3	5.04	91.17
	07/29/2014	<1.0	<1.0	<1.0	<1.0	7.62	88.59
	11/05/2014	<1.0	<1.0	<1.0	<1.0	6.76	89.45
MW15	08/26/2008	<b>52</b>	120	120	<b>1900</b>	3.74	NA
	11/14/2008	<b>62</b>	22	89	1100	4.88	NA
	02/17/2009	<b>340</b>	310	76	960	4.96	NA
	05/15/2009	<b>68</b>	11	29	<b>2300</b>	3.48	NA
	08/26/2009	<b>88</b>	<1.0	64	260	5.31	NA
	11/18/2009	<b>220</b>	<1.0	74	190	5.65	NA
	02/04/2010	<b>240</b>	<1.0	74	170	5.65	NA
	05/19/2010	<b>110</b>	<1.0	36	95	3.49	NA
	08/13/2010	4.6	2.7	8.8	37	4.30	NA
	11/11/2010	<b>9.8</b>	<1.0	6.2	15	4.90	NA
	02/16/2011	<1.0	<1.0	<1.0	<1.0	4.75	NA
	05/24/2011	<1.0	<1.0	<1.0	<1.0	2.88	NA
	08/19/2011	<b>150</b>	<1.0	71	95	5.75	NA
	11/19/2011	<1.0	<1.0	<1.0	<1.0	5.45	NA
MW15 destroyed as of 12/1/2011							
MW15R	08/21/2012	1.3	5.1	4.4	22	7.00	89.11
	11/29/2012	<1.0	<1.0	<1.0	22	6.33	89.78
	02/28/2013	<1.0	<1.0	<1.0	<1.0	6.47	89.64
	05/13/2013	2.5	2.2	2.1	25	4.96	91.15
	08/29/2013	2.2	<1.0	<1.0	6.1	7.04	89.07
	11/07/2013	<1.0	<1.0	<1.0	3.0	5.60	90.51
	11/18/2013	Surveyed - Not Sampled				6.20	90.43
	02/18/2014	<1.0	1.7	1.8	20.5	5.57	90.54
	05/13/2014	<1.0	<1.0	<1.0	13.9	5.21	91.42
	07/29/2014	<1.0	1.3	4.2	51.3	4.71	91.92
	11/05/2014	<1.0	<1.0	<1.0	<1.0	6.91	89.72
MW16	01/23/2009	<1.0	<1.0	<1.0	<1.0	4.78	NA
	02/17/2009	<1.0	<1.0	<1.0	<1.0	4.85	NA
	05/15/2009	<1.0	<1.0	<1.0	<1.0	3.95	NA



**TABLE 1 (Continued)**  
**GROUNDWATER ANALYTICAL AND FIELD RESULTS**  
**HSR-AVERY 10-27A/ HSR-SAVUL 15-27/ HSR-TUTEUR 9-27A**  
**WELD COUNTY, COLORADO**  
**KERR-MCGEE OIL & GAS ONSHORE LP**

Well Name	Date	Benzene (ug/L)	Toluene (ug/L)	Ethylbenzene (ug/L)	Xylenes (ug/L)	Depth Water/ (Product Thickness) (ft bgs)	Relative GW Elev. (ft)
MW16	08/26/2009	<b>6.3</b>	<1.0	76	3.8	5.72	NA
	11/18/2009	<1.0	<1.0	<1.0	<1.0	5.52	NA
	02/04/2010	<1.0	<1.0	<1.0	<1.0	5.54	NA
	05/19/2010	<1.0	<1.0	1.0	<1.0	3.19	NA
	08/13/2010	<1.0	<1.0	8.8	<1.0	4.25	NA
	11/11/2010	<1.0	<1.0	5.6	<1.0	4.75	NA
	02/16/2011	<1.0	<1.0	<1.0	<1.0	4.64	NA
	05/24/2011	<1.0	<1.0	<1.0	<1.0	2.69	NA
	08/19/2011	1.7	<1.0	4.8	3.6	5.58	NA
	11/19/2011	<1.0	<1.0	<1.0	<1.0	5.21	NA
	02/17/2012	<1.0	<1.0	<1.0	<1.0	4.28	NA
	05/21/2012	<1.0	<1.0	<1.0	<1.0	4.24	NA
	08/21/2012	1.3	<0.88	3.1	24	4.97	NA
	11/29/2012	<1.0	<1.0	<1.0	<1.0	4.51	NA
	02/28/2013	<1.0	<1.0	<1.0	<1.0	4.62	NA
	05/13/2013	<1.0	<1.0	<1.0	<1.0	3.11	NA
	08/29/2013	<1.0	<1.0	<1.0	3.4	5.39	NA
	11/07/2013	<1.0	<1.0	<1.0	<1.0	3.85	NA
	02/18/2014	<1.0	<1.0	<1.0	<1.0	NM	NA
	05/13/2014	<1.0	<1.0	<1.0	<1.0	NM	NA
	07/29/2014	<1.0	<1.0	<1.0	7.8	NM	NA
	11/05/2014	<1.0	<1.0	<1.0	4.9	NM	NA
MW17	01/23/2009	<b>120</b>	<1.0	43	140	4.65	88.52
	02/17/2009	<b>71</b>	<1.0	13	110	4.58	88.44
	05/15/2009	<1.0	<1.0	<1.0	<1.0	3.47	89.55
	08/26/2009	<b>69</b>	<1.0	29	200	5.35	87.67
	11/18/2009	<b>8.4</b>	<1.0	5.7	17	5.25	87.77
	02/04/2010	<b>86</b>	<1.0	16	11	5.19	87.83
	05/19/2010	<b>330</b>	<1.0	36	23	2.94	90.08
	08/13/2010	<b>76</b>	<1.0	8.8	9.0	3.98	89.04
	11/11/2010	<b>49</b>	<1.0	5.9	47	4.48	88.54
	02/16/2011	<1.0	<1.0	<1.0	<1.0	4.36	88.66
	05/24/2011	<1.0	<1.0	<1.0	<1.0	2.47	90.55
	08/19/2011	<b>62</b>	<1.0	2.8	43	5.28	87.74
	11/19/2011	<1.0	<1.0	<1.0	<1.0	4.98	88.04



**TABLE 1 (Continued)**  
**GROUNDWATER ANALYTICAL AND FIELD RESULTS**  
**HSR-AVERY 10-27A/ HSR-SAVUL 15-27/ HSR-TUTEUR 9-27A**  
**WELD COUNTY, COLORADO**  
**KERR-MCGEE OIL & GAS ONSHORE LP**

Well Name	Date	Benzene (ug/L)	Toluene (ug/L)	Ethylbenzene (ug/L)	Xylenes (ug/L)	Depth Water/ (Product Thickness) (ft bgs)	Relative GW Elev. (ft)
MW17	02/17/2012	2.2	<1.0	<1.0	<1.0	4.04	88.98
	05/21/2012	<1.0	<1.0	<1.0	<1.0	3.95	89.07
	08/21/2012	1.5	<1.0	<1.0	12	4.55	88.33
	11/29/2012	<1.0	<1.0	<1.0	<1.0	4.12	88.76
	02/28/2013	21	<1.0	<1.0	22	4.22	88.66
	05/13/2013	79	<1.0	35	110	2.76	90.12
	08/29/2013	Inaccessible - Not Sampled				Inaccessible	NA
	11/07/2013	40.1	<1.0	71.4	350	3.48	89.40
	11/18/2013	Surveyed - Not Sampled				3.65	89.39
	02/18/2014	88.4	<1.0	60.2	337	3.27	89.61
	05/13/2014	131	<1.0	62.4	360	2.64	90.40
	07/29/2014	8.2	<1.0	26.3	33.5	4.38	88.66
	11/05/2014	81.8	<1.0	26.4	357	4.31	88.73
MW18	02/19/2009	150	<1.0	<1.0	<1.0	NM	NA
	05/15/2009	<1.0	<1.0	<1.0	<1.0	3.60	88.56
	08/26/2009	19	<1.0	<1.0	<1.0	5.50	86.66
	11/18/2009	12	<1.0	<1.0	<1.0	5.10	87.06
	02/04/2010	<1.0	<1.0	<1.0	<1.0	4.97	87.19
	05/19/2010	<1.0	<1.0	<1.0	<1.0	2.77	89.39
	08/13/2010	19	<1.0	<1.0	<1.0	3.98	88.18
	11/11/2010	<1.0	<1.0	<1.0	<1.0	4.39	87.77
	02/16/2011	<1.0	<1.0	<1.0	<1.0	4.23	87.93
	05/24/2011	<1.0	<1.0	<1.0	<1.0	2.35	89.81
	08/19/2011	14	<1.0	<1.0	<1.0	5.09	87.07
	11/19/2011	<1.0	<1.0	<1.0	<1.0	4.77	87.39
	02/17/2012	<1.0	<1.0	<1.0	<1.0	3.83	88.33
	05/21/2012	<1.0	<1.0	<1.0	<1.0	3.76	88.40
	08/21/2012	<1.0	<1.0	<1.0	<1.0	4.53	87.70
	11/29/2012	<1.0	<1.0	<1.0	<1.0	4.13	88.10
	02/28/2013	<1.0	<1.0	<1.0	<1.0	4.20	88.03
	05/13/2013	6.1	<1.0	<1.0	<1.0	2.78	89.45
	08/29/2013	Inaccessible - Not Sampled				Inaccessible	NA
	11/07/2013	<1.0	<1.0	<1.0	<1.0	3.57	88.72
	11/18/2013	Surveyed - Not Sampled				3.45	88.67
	02/18/2014	3.9	<1.0	4.0	5.9	3.28	88.95



**TABLE 1 (Continued)**  
**GROUNDWATER ANALYTICAL AND FIELD RESULTS**  
**HSR-AVERY 10-27A/ HSR-SAVUL 15-27/ HSR-TUTEUR 9-27A**  
**WELD COUNTY, COLORADO**  
**KERR-MCGEE OIL & GAS ONSHORE LP**

Well Name	Date	Benzene (ug/L)	Toluene (ug/L)	Ethylbenzene (ug/L)	Xylenes (ug/L)	Depth Water/ (Product Thickness) (ft bgs)	Relative GW Elev. (ft)
MW18	05/13/2014	1.2	<1.0	<1.0	<1.0	2.37	89.75
	07/29/2014	1.7	<1.0	<1.0	<1.0	-0.73	92.85
	11/05/2014	<1.0	<1.0	<1.0	<1.0	4.03	88.09
MW19	02/19/2009	<1.0	1.6	<1.0	<1.0	NM	NA
	05/15/2009	<1.0	<1.0	<1.0	<1.0	3.39	89.04
	08/26/2009	<1.0	<1.0	<1.0	<1.0	5.29	87.14
	11/18/2009	<1.0	<1.0	<1.0	<1.0	5.28	87.15
	02/04/2010	<1.0	<1.0	<1.0	<1.0	5.06	87.37
	05/19/2010	<1.0	<1.0	<1.0	<1.0	2.69	89.56
	08/13/2010	<1.0	<1.0	<1.0	<1.0	4.01	88.42
	11/11/2010	<1.0	<1.0	<1.0	<1.0	4.44	87.99
	02/16/2011	<1.0	<1.0	<1.0	<1.0	4.33	88.10
	05/24/2011	<1.0	<1.0	<1.0	<1.0	2.51	89.92
	08/19/2011	<1.0	<1.0	<1.0	<1.0	5.18	87.25
	11/19/2011	<1.0	<1.0	<1.0	<1.0	4.80	87.63
	02/17/2012	<1.0	<1.0	<1.0	<1.0	3.89	88.54
	05/21/2012	<1.0	<1.0	<1.0	<1.0	3.38	88.60
	08/21/2012	<1.0	<1.0	<1.0	<1.0	4.35	87.95
	11/29/2012	<1.0	<1.0	<1.0	<1.0	4.06	88.24
	02/28/2013	<1.0	<1.0	<1.0	<1.0	4.13	88.17
	05/13/2013	<1.0	<1.0	<1.0	<1.0	2.68	89.62
	08/28/2013	Removed from monitoring				NM	NA
	11/18/2013	Surveyed - Not Sampled				3.58	88.80
MW20	02/04/2010	<1.0	<1.0	<1.0	<1.0	5.82	NA
	05/19/2010	<1.0	<1.0	<1.0	<1.0	3.71	NA
	08/13/2010	<1.0	<1.0	<1.0	<1.0	4.92	NA
	11/11/2010	<1.0	<1.0	<1.0	<1.0	5.21	NA
	02/16/2011	<1.0	<1.0	<1.0	<1.0	5.11	NA
	05/24/2011	<1.0	<1.0	<1.0	<1.0	3.13	NA
	08/19/2011	<1.0	<1.0	<1.0	<1.0	4.33	NA
	11/19/2011	<1.0	<1.0	<1.0	<1.0	5.71	NA
	02/17/2012	<1.0	<1.0	<1.0	<1.0	4.92	NA
MW20 destroyed as of 2/18/2012							
MW20R	08/21/2012	<0.88	<0.88	<0.88	<0.88	6.67	88.00
	11/29/2012	<1.0	<1.0	<1.0	<1.0	6.20	88.47



**TABLE 1 (Continued)**  
**GROUNDWATER ANALYTICAL AND FIELD RESULTS**  
**HSR-AVERY 10-27A/ HSR-SAVUL 15-27/ HSR-TUTEUR 9-27A**  
**WELD COUNTY, COLORADO**  
**KERR-MCGEE OIL & GAS ONSHORE LP**

Well Name	Date	Benzene (ug/L)	Toluene (ug/L)	Ethylbenzene (ug/L)	Xylenes (ug/L)	Depth Water/ (Product Thickness) (ft bgs)	Relative GW Elev. (ft)
MW20R	02/28/2013	<1.0	<1.0	<1.0	<1.0	6.25	88.42
	05/13/2013	<1.0	<1.0	<1.0	<1.0	4.75	89.92
	08/29/2013	<1.0	<1.0	<1.0	<1.0	6.89	87.78
	11/18/2013	Surveyed - Not Sampled				5.20	89.15
	02/18/2014	<4.0	<4.0	<4.0	<4.0	5.78	89.05
	05/13/2014	<1.0	<1.0	<1.0	<1.0	4.67	90.16
	07/29/2014	<1.0	<1.0	<1.0	<1.0	6.18	88.65
	11/05/2014	<1.0	<1.0	<1.0	<1.0	6.41	88.42
MW21	02/04/2010	<1.0	<1.0	<1.0	<1.0	5.47	NA
	05/19/2010	<1.0	<1.0	<1.0	<1.0	3.28	NA
	08/13/2010	<1.0	<1.0	<1.0	<1.0	4.30	NA
	11/11/2010	<1.0	<1.0	<1.0	<1.0	4.84	NA
	02/16/2011	<1.0	<1.0	<1.0	<1.0	4.75	NA
	05/24/2011	<1.0	<1.0	<1.0	<1.0	2.75	NA
	08/19/2011	<1.0	<1.0	<1.0	<1.0	6.65	NA
	11/19/2011	<1.0	<1.0	<1.0	<1.0	5.29	NA
	02/17/2012	<1.0	<1.0	<1.0	<1.0	4.38	NA
MW21 destroyed as of 2/18/2012							
MW21R	08/21/2012	<1.0	<1.0	<1.0	<1.0	4.75	88.51
	11/29/2012	<1.0	<1.0	<1.0	<1.0	4.24	89.02
	02/28/2013	<1.0	<1.0	<1.0	<1.0	4.25	89.01
	05/13/2013	<1.0	<1.0	<1.0	<1.0	2.81	90.45
	08/29/2013	<1.0	<1.0	<1.0	<1.0	5.10	88.16
	11/07/2013	<1.0	<1.0	<1.0	<1.0	3.53	89.73
	11/18/2013	Surveyed - Not Sampled				3.69	89.70
	02/18/2014	<1.0	<1.0	<1.0	<1.0	3.36	89.90
	05/13/2014	<1.0	<1.0	<1.0	<1.0	2.59	90.80
	07/29/2014	<1.0	<1.0	<1.0	<1.0	4.31	89.08
	11/05/2014	<1.0	<1.0	<1.0	<1.0	3.32	90.07
MW22	02/04/2010	<1.0	<1.0	<1.0	<1.0	5.35	87.85
	05/19/2010	<1.0	<1.0	<1.0	<1.0	3.20	90.00
	08/13/2010	<1.0	<1.0	<1.0	<1.0	4.31	88.89
	11/11/2010	<1.0	<1.0	<1.0	<1.0	4.78	88.42
	02/16/2011	<1.0	<1.0	<1.0	<1.0	4.67	88.53
	05/24/2011	<1.0	<1.0	<1.0	<1.0	2.71	90.49





**TABLE 1 (Continued)**  
**GROUNDWATER ANALYTICAL AND FIELD RESULTS**  
**HSR-AVERY 10-27A/ HSR-SAVUL 15-27/ HSR-TUTEUR 9-27A**  
**WELD COUNTY, COLORADO**  
**KERR-MCGEE OIL & GAS ONSHORE LP**

Well Name	Date	Benzene (ug/L)	Toluene (ug/L)	Ethylbenzene (ug/L)	Xylenes (ug/L)	Depth Water/ (Product Thickness) (ft bgs)	Relative GW Elev. (ft)
MW22	08/19/2011	<1.0	<1.0	<1.0	<1.0	5.57	87.63
	11/19/2011	<1.0	<1.0	<1.0	<1.0	5.16	88.04
	02/17/2012	<1.0	<1.0	<1.0	<1.0	4.28	88.92
	05/21/2012	<1.0	<1.0	<1.0	<1.0	4.25	88.95
	08/21/2012	<1.0	<1.0	<1.0	<1.0	4.95	88.15
	11/29/2012	<1.0	<1.0	<1.0	<1.0	4.42	88.68
	02/28/2013	<1.0	<1.0	<1.0	<1.0	4.50	88.60
	05/13/2013	<1.0	<1.0	<1.0	<1.0	2.99	90.11
	08/29/2013	Inaccessible - Not Sampled				Inaccessible	NA
	11/07/2013	<1.0	<1.0	<1.0	<1.0	3.70	90.55
	11/18/2013	Surveyed - Not Sampled				3.86	89.11
	02/18/2014	<1.0	<1.0	<1.0	<1.0	4.86	89.39
	05/13/2014	<1.0	<1.0	<1.0	<1.0	2.75	90.22
	07/29/2014	<1.0	<1.0	<1.0	<1.0	4.61	88.36
	11/05/2014	<1.0	<1.0	<1.0	<1.0	3.46	89.51
MW23	02/04/2010	<1.0	<1.0	<1.0	<1.0	5.35	86.80
	05/19/2010	<1.0	<1.0	<1.0	<1.0	3.01	89.14
	08/13/2010	<1.0	<1.0	<1.0	<1.0	4.39	87.76
	11/11/2010	<1.0	<1.0	<1.0	<1.0	4.74	87.41
	02/16/2011	<1.0	<1.0	<1.0	<1.0	4.60	87.55
	05/24/2011	<1.0	<1.0	<1.0	<1.0	2.71	89.44
	08/19/2011	<1.0	<1.0	<1.0	<1.0	5.48	86.67
	11/19/2011	<1.0	<1.0	<1.0	<1.0	5.03	87.12
	02/17/2012	<1.0	<1.0	<1.0	<1.0	4.20	87.95
	05/21/2012	<1.0	<1.0	<1.0	<1.0	4.17	87.98
	08/21/2012	<1.0	<1.0	<1.0	<1.0	4.65	87.37
	11/29/2012	<1.0	<1.0	<1.0	<1.0	4.27	87.75
	02/28/2013	<1.0	<1.0	<1.0	<1.0	4.42	87.60
	05/13/2013	<1.0	<1.0	<1.0	<1.0	2.90	89.12
	08/28/2013	Removed from monitoring				NM	NA
	11/18/2013	Surveyed - Not Sampled				3.71	88.30
MW24	02/04/2010	<1.0	<1.0	<1.0	<1.0	4.90	86.72
	05/19/2010	<1.0	<1.0	<1.0	<1.0	3.68	87.94
	08/13/2010	<1.0	<1.0	<1.0	<1.0	4.07	87.55



**TABLE 1 (Continued)**  
**GROUNDWATER ANALYTICAL AND FIELD RESULTS**  
**HSR-AVERY 10-27A/ HSR-SAVUL 15-27/ HSR-TUTEUR 9-27A**  
**WELD COUNTY, COLORADO**  
**KERR-MCGEE OIL & GAS ONSHORE LP**

Well Name	Date	Benzene (ug/L)	Toluene (ug/L)	Ethylbenzene (ug/L)	Xylenes (ug/L)	Depth Water/ (Product Thickness) (ft bgs)	Relative GW Elev. (ft)
MW24	11/11/2010	Not Found - Not Sampled				Not Found	NA
	02/16/2011	<1.0	<1.0	<1.0	<1.0	4.27	87.36
	05/24/2011	<1.0	<1.0	<1.0	<1.0	2.46	89.17
	08/19/2011	<1.0	<1.0	<1.0	<1.0	5.03	86.60
	11/19/2011	<1.0	<1.0	<1.0	<1.0	4.73	86.90
	02/17/2012	<1.0	<1.0	<1.0	<1.0	3.86	87.77
	05/21/2012	<1.0	<1.0	<1.0	<1.0	3.84	87.79
	08/21/2012	<1.0	<1.0	<1.0	<1.0	4.20	87.19
	11/29/2012	<1.0	<1.0	<1.0	<1.0	3.82	87.57
	02/28/2013	<1.0	<1.0	<1.0	<1.0	3.93	87.46
	05/13/2013	<1.0	<1.0	<1.0	<1.0	2.46	88.93
	08/28/2013	Removed from monitoring				NM	NA
	11/18/2013	Surveyed - Not Sampled				3.33	88.10
<b>CGWQS</b>		<b>5</b>	<b>1000</b>	<b>700</b>	<b>1400</b>		

Notes: ug/L - micrograms per Liter  
ft bgs - feet below ground surface  
GW - Groundwater

Elev. - Elevation  
Bold numbers indicate result exceeded standard.  
< - less than

NA - Not Analyzed/Not Available  
NM - Not Measured  
CGWQS - Colorado Groundwater Quality Standards

