

2014 ANNUAL PROJECT SUMMARY TABLE

Incident Date	Remediation No.	Well Name	API	Status	NFA Submitted	NFA Approved Date	Site Summary (monitoring/remediation/ wells installed or destroyed)	Wells Sampled (Last Quarter) 2014	Wells Exceeding 5 ug/L Benzene (Last Quarter Sampled 2014)	Benzene Range (ug/L) (Last Quarter 2014)	POC Established	2015 Recommendations	Well Reduction Request
10/6/2006	3952	Fritzler UPRR 31-31	05-123-16124	Remediation	NO	NA	Quarterly groundwater monitoring since May 2007. AS/SVE system installed and turned on in May 2010. Recovery well RW01 installed May 2012. MW08R installed March 2013. MW04, MW06, MW13, MW18, and MW21 were removed from monitoring in 2013. AS/SVE system was turned off October 2013. Carbon slurry (BOS 200) injection completed in August 2014. AS polishing and static groundwater monitoring conducted in 2014.	MW01-MW03, MW05, MW07-MW12, MW14-MW17, MW19, MW20R	MW10	ND - 2,070	YES	AS polishing of select area will continue in 2015. Remainder of AS/SVE remediation system will be removed from site in 2015. Quarterly groundwater monitoring will continue.	NA

Notes:
NA - Not Applicable
ND - Non-Detect
NFA - No Further Action
POC - Point of Compliance

GROUNDWATER SAMPLE ID
 B: BENZENE CONCENTRATION
 Q1-Q4: FIRST-FOURTH QUARTER 2014
 ALL RESULTS IN MICROGRAMS PER LITER
BOLD INDICATES RESULT ABOVE STANDARD
 <: LESS THAN LABORATORY REPORTING LIMIT

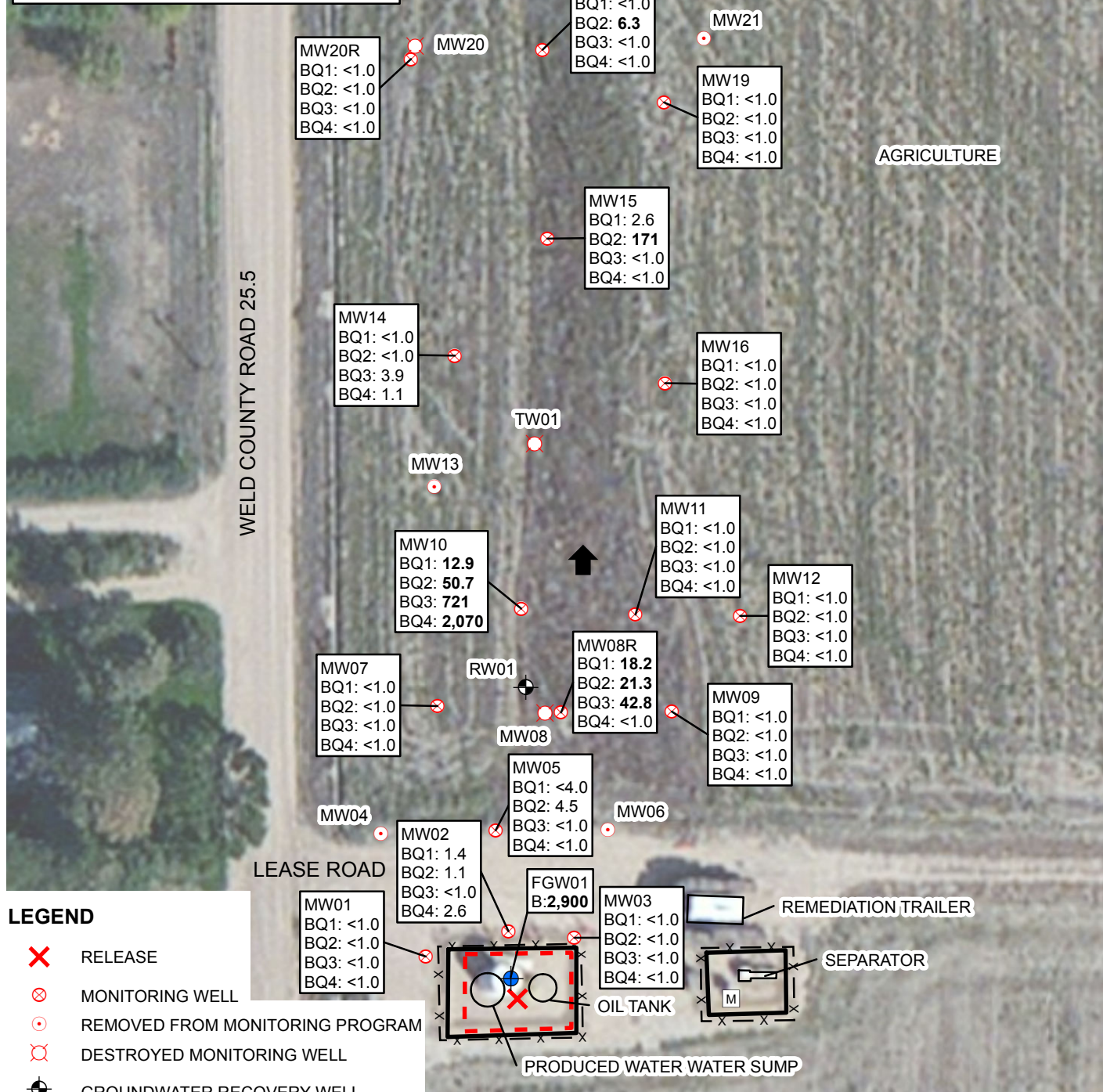


IMAGE COURTESY OF ESRI

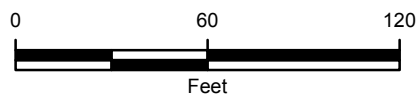


FIGURE 1
SITE MAP
 FRITZLER UPRR 31-31
 NWNE SEC 31-T4N-R66W
 WELD COUNTY, COLORADO
 KERR-MCGEE OIL & GAS ONSHORE LP



TABLE 1
GROUNDWATER ANALYTICAL AND FIELD RESULTS
FRITZLER UPRR 31-31
WELD COUNTY, COLORADO
KERR-MCGEE OIL & GAS ONSHORE LP

Well Name	Date	Benzene (ug/L)	Toluene (ug/L)	Ethylbenzene (ug/L)	Xylenes (ug/L)	Depth Water/ (Product Thickness) (ft bgs)	Relative GW Elev. (ft)
FGW01	10/30/2006	2900	4100	200	3400	NM	NA
MW01	05/22/2007	170	<1.0	11	180	24.21	73.39
	08/23/2007	<1.0	<1.0	<1.0	<1.0	15.50	82.10
	11/02/2007	<1.0	<1.0	<1.0	<1.0	14.80	82.80
	02/20/2008	<1.0	<1.0	<1.0	<1.0	18.11	79.49
	05/28/2008	<1.0	<1.0	<1.0	<1.0	17.33	80.27
	08/25/2008	<1.0	<1.0	<1.0	<1.0	14.95	82.65
	12/01/2008	<1.0	<1.0	<1.0	<1.0	14.00	83.60
	02/16/2009	<1.0	<1.0	<1.0	<1.0	16.42	81.18
	05/22/2009	<1.0	<1.0	<1.0	<1.0	15.10	82.50
	08/31/2009	<1.0	<1.0	<1.0	<1.0	11.72	85.88
	11/24/2009	<1.0	<1.0	<1.0	<1.0	10.84	86.76
	02/25/2010	<1.0	<1.0	<1.0	<1.0	16.47	81.22
	05/13/2010	<1.0	<1.0	<1.0	<1.0	15.95	81.65
	08/30/2010	<1.0	<1.0	<1.0	<1.0	12.21	85.39
	11/23/2010	<1.0	<1.0	<1.0	<1.0	13.44	84.16
	02/24/2011	<1.0	<1.0	<1.0	<1.0	15.95	81.65
	05/25/2011	<1.0	<1.0	<1.0	<1.0	15.21	82.39
	08/25/2011	<1.0	<1.0	<1.0	<1.0	11.66	85.94
	11/29/2011	<1.0	<1.0	<1.0	<1.0	12.73	84.87
	02/23/2012	<1.0	<1.0	<1.0	<1.0	15.74	81.86
	05/22/2012	<1.0	<1.0	<1.0	<1.0	14.93	82.67
	08/28/2012	<1.0	<1.0	<1.0	<1.0	14.50	83.10
	11/29/2012	<1.0	<1.0	<1.0	<1.0	15.31	82.29
	02/27/2013	<1.0	<1.0	<1.0	<1.0	18.70	78.90
	05/30/2013	<1.0	<1.0	<1.0	<1.0	17.79	79.81
	08/26/2013	<1.0	<1.0	1.5	<1.0	14.20	83.40
	11/18/2013	<1.0	<1.0	<1.0	<1.0	11.91	85.69
	12/10/2013	Surveyed - Not Sampled				13.22	84.65
	02/11/2014	<1.0	<1.0	<1.0	<1.0	14.79	82.81
	05/23/2014	<1.0	<1.0	<1.0	<1.0	13.51	84.36
	09/30/2014	<1.0	<1.0	<1.0	<1.0	10.97	86.90
	11/25/2014	<1.0	<1.0	<1.0	<1.0	10.32	87.55
MW02	05/22/2007	22000	26000	2300	62000	19.35	78.40



TABLE 1 (Continued)
GROUNDWATER ANALYTICAL AND FIELD RESULTS
FRITZLER UPRR 31-31
WELD COUNTY, COLORADO
KERR-MCGEE OIL & GAS ONSHORE LP

Well Name	Date	Benzene (ug/L)	Toluene (ug/L)	Ethylbenzene (ug/L)	Xylenes (ug/L)	Depth Water/ (Product Thickness) (ft bgs)	Relative GW Elev. (ft)
MW02	08/23/2007	23000	21000	510	14000	15.70	82.05
	11/02/2007	22000	19000	970	18000	14.95	82.80
	02/20/2008	18000	11000	770	12000	18.25	79.50
	05/28/2008	19000	11000	820	14000	17.49	80.26
	08/25/2008	15000	7000	890	12000	15.15	82.60
	12/01/2008	14000	9800	790	33000	13.15	83.60
	02/16/2009	19000	2500	570	5400	16.91	80.84
	05/22/2009	7300	1900	460	7200	15.29	82.46
	08/31/2009	15000	860	470	7700	11.93	85.82
	11/24/2009	13000	280	<1.0	14000	13.08	84.67
	02/25/2010	14000	1100	100	400	16.77	80.98
	05/13/2010	14000	1500	720	37000	16.13	81.62
	08/30/2010	7500	1900	150	8200	12.77	84.98
	11/23/2010	73	450	470	13000	13.60	84.15
	02/24/2011	42	130	150	5000	16.15	81.60
	05/25/2011	9.7	930	540	12000	15.36	82.39
	07/25/2011	9.9	120	55	3600	12.44	85.31
	08/25/2011	35	190	89	4500	11.85	85.90
	11/29/2011	9.1	52	29	2700	12.90	84.85
	02/23/2012	3.4	61	27	950	15.94	81.81
	05/22/2012	<1.0	1.0	<1.0	8.3	15.20	82.55
	08/28/2012	2.6	8.9	13	790	14.72	83.03
	11/28/2012	4.4	1.4	16	80	15.53	82.22
	02/27/2013	5.9	2.1	39	200	18.95	78.80
	05/30/2013	<1.0	<1.0	15	50	18.01	79.74
	08/26/2013	1.1	<1.0	22	57	14.41	83.34
	11/18/2013	<1.0	<1.0	3.9	28.0	12.10	85.65
	12/10/2013	Surveyed - Not Sampled				13.19	84.62
	02/11/2014	1.4	<1.0	15.2	270	14.99	82.76
	05/23/2014	1.1	<1.0	25.5	341	13.50	84.31
	09/30/2014	<1.0	<1.0	24.8	286	10.96	86.85
	11/25/2014	2.6	1.0	77.7	1210	10.38	87.43
MW03	05/22/2007	1100	2200	300	5400	18.35	78.39
	08/23/2007	110	97	39	160	14.65	82.09
	11/02/2007	120	5.4	14	18	13.90	82.84



TABLE 1 (Continued)
GROUNDWATER ANALYTICAL AND FIELD RESULTS
FRITZLER UPRR 31-31
WELD COUNTY, COLORADO
KERR-MCGEE OIL & GAS ONSHORE LP

Well Name	Date	Benzene (ug/L)	Toluene (ug/L)	Ethylbenzene (ug/L)	Xylenes (ug/L)	Depth Water/ (Product Thickness) (ft bgs)	Relative GW Elev. (ft)
MW03	02/20/2008	1100	160	170	650	17.30	79.44
	05/28/2008	22	43	36	69	16.48	80.26
	08/25/2008	5.4	47	23	210	14.10	82.64
	12/01/2008	330	120	86	610	13.15	83.59
	02/16/2009	16	22	14	53	15.97	80.77
	05/22/2009	11	24	23	110	14.22	82.52
	08/31/2009	<1.0	74	44	190	11.71	85.03
	11/24/2009	5.8	6.5	48	170	12.05	84.69
	02/25/2010	3.2	24	40	79	15.70	81.04
	05/13/2010	<1.0	9.3	17	62	15.09	81.65
	08/30/2010	<1.0	27	68	820	13.15	83.59
	11/23/2010	<1.0	3.7	39	2100	12.60	84.14
	02/24/2011	<1.0	18	120	1900	15.15	81.59
	05/25/2011	<1.0	<1.0	44	490	14.33	82.41
	08/25/2011	<1.0	<1.0	15	230	10.80	85.94
	11/29/2011	<1.0	<1.0	5.2	87	12.00	84.74
	02/23/2012	<1.0	<1.0	68	900	14.90	81.84
	05/22/2012	<1.0	<1.0	<1.0	<1.0	14.17	82.57
	08/28/2012	<1.0	<1.0	7.8	91	13.66	83.08
	11/28/2012	<1.0	<1.0	3.8	36	14.25	82.49
	02/27/2013	<1.0	<1.0	6.4	81	17.62	79.12
	05/30/2013	<1.0	<1.0	3.3	47	11.45	85.29
	08/26/2013	<1.0	<1.0	1.5	7.1	8.05	88.69
	11/18/2013	<1.0	<1.0	<1.0	2.2	11.05	85.69
	12/10/2013	Surveyed - Not Sampled				12.80	84.64
	02/11/2014	<1.0	<1.0	<1.0	3.6	13.94	82.80
	05/23/2014	<1.0	<1.0	<1.0	4.6	13.07	84.37
	09/30/2014	<1.0	<1.0	<1.0	<1.0	10.53	86.91
	11/25/2014	<1.0	<1.0	<1.0	<1.0	9.79	87.65
MW04	08/23/2007	<1.0	<1.0	<1.0	<1.0	15.30	81.95
	11/02/2007	<1.0	<1.0	<1.0	<1.0	14.53	82.72
	02/20/2008	Dry - Not Sampled				Dry	NA
	05/28/2008	<1.0	<1.0	<1.0	<1.0	17.17	80.08
	08/25/2008	<1.0	<1.0	<1.0	<1.0	14.73	82.52
	12/01/2008	<1.0	<1.0	<1.0	<1.0	13.78	83.47



TABLE 1 (Continued)
GROUNDWATER ANALYTICAL AND FIELD RESULTS
FRITZLER UPRR 31-31
WELD COUNTY, COLORADO
KERR-MCGEE OIL & GAS ONSHORE LP

Well Name	Date	Benzene (ug/L)	Toluene (ug/L)	Ethylbenzene (ug/L)	Xylenes (ug/L)	Depth Water/ (Product Thickness) (ft bgs)	Relative GW Elev. (ft)
MW04	02/16/2009	Insufficient Water - Not Sampled				17.81	79.44
	05/22/2009	<1.0	<1.0	<1.0	<1.0	14.87	82.38
	08/31/2009	<1.0	<1.0	<1.0	<1.0	11.57	85.68
	11/24/2009	<1.0	<1.0	<1.0	<1.0	12.74	84.51
	02/25/2010	Frozen - Not Sampled				Frozen	NA
	05/13/2010	<1.0	<1.0	<1.0	<1.0	15.85	81.40
	08/30/2010	<1.0	<1.0	<1.0	12	11.98	85.27
	11/23/2010	<1.0	<1.0	<1.0	<1.0	13.20	84.05
	02/24/2011	<1.0	<1.0	<1.0	<1.0	15.88	81.37
	05/25/2011	<1.0	<1.0	<1.0	<1.0	15.08	82.17
	08/25/2011	<1.0	<1.0	<1.0	<1.0	11.43	85.82
	11/29/2011	<1.0	<1.0	<1.0	<1.0	14.55	82.70
	02/23/2012	<1.0	<1.0	<1.0	<1.0	15.54	81.71
	05/22/2012	<1.0	<1.0	<1.0	<1.0	14.65	82.60
	08/28/2012	<1.0	<1.0	<1.0	<1.0	14.29	82.96
	11/29/2012	<1.0	<1.0	<1.0	<1.0	15.91	81.34
	02/27/2013	Not Sampled due to snow cover				Not Found	NA
	08/26/2013	<1.0	<1.0	<1.0	<1.0	14.10	83.15
	08/28/2013	Removed from monitoring				NM	NA
	12/10/2013	Surveyed - Not Sampled				12.01	84.54
MW05	08/23/2007	18000	11000	640	9300	15.00	NA
	11/02/2007	21000	12000	660	10000	14.23	NA
	02/20/2008	19000	11000	870	12000	17.60	NA
	05/28/2008	23000	15000	970	13000	16.82	NA
	08/25/2008	11000	1200	880	9000	14.43	NA
	12/01/2008	22000	18	710	10000	13.51	NA
	02/16/2009	10000	430	630	740	16.68	NA
	05/22/2009	9100	1100	480	4900	14.58	NA
	08/31/2009	8300	26	600	5600	11.38	NA
	11/24/2009	11000	16	6500	9900	11.62	NA
	02/25/2010	Frozen - Not Sampled				Frozen	NA
	05/13/2010	26000	1800	620	540	15.43	NA
	08/30/2010	17	1.0	2.8	400	12.15	NA
	11/23/2010	2.9	<1.0	4.6	79	12.93	NA
	02/24/2011	1.5	6.8	3.2	94	14.50	NA



TABLE 1 (Continued)
GROUNDWATER ANALYTICAL AND FIELD RESULTS
FRITZLER UPRR 31-31
WELD COUNTY, COLORADO
KERR-MCGEE OIL & GAS ONSHORE LP

Well Name	Date	Benzene (ug/L)	Toluene (ug/L)	Ethylbenzene (ug/L)	Xylenes (ug/L)	Depth Water/ (Product Thickness) (ft bgs)	Relative GW Elev. (ft)
MW05	05/25/2011	220	3200	160	2300	13.55	NA
	07/25/2011	<1.0	<1.0	<1.0	<1.0	11.74	NA
	08/25/2011	12	<1.0	1.3	18	11.18	NA
	11/29/2011	<1.0	<1.0	<1.0	<1.0	12.30	NA
	02/23/2012	<1.0	<1.0	<1.0	<1.0	15.30	NA
	05/22/2012	<1.0	<1.0	<1.0	<1.0	14.50	NA
	08/28/2012	<1.0	<1.0	3.8	29	14.01	NA
	11/29/2012	<1.0	<1.0	<1.0	2.8	15.60	NA
	02/27/2013	<1.0	1.1	260	1900	18.60	NA
	05/30/2013	<1.0	<1.0	<1.0	11	17.32	NA
	08/26/2013	<1.0	130	84	1200	13.80	NA
	11/18/2013	3.7	5.0	122	1980	11.40	NA
	12/10/2013	Surveyed - Not Sampled				11.95	NA
	02/11/2014	Not Found - Not Sampled				Not Found	NA
	02/26/2014	<4.0	<4.0	161	720	14.35	NA
	05/23/2014	4.5	2.0	431	5180	12.74	NA
	09/30/2014	<1.0	<1.0	1.0	6.9	10.23	NA
	11/25/2014	<1.0	<1.0	<1.0	3.6	11.76	NA
MW06	08/23/2007	8.4	2.2	1.2	9.0	14.90	81.93
	11/02/2007	<1.0	<1.0	<1.0	<1.0	14.05	82.78
	02/20/2008	<1.0	<1.0	<1.0	<1.0	17.48	79.35
	05/28/2008	<1.0	<1.0	<1.0	<1.0	16.70	80.13
	08/25/2008	<1.0	<1.0	<1.0	<1.0	14.32	82.51
	12/01/2008	<1.0	<1.0	<1.0	<1.0	13.32	83.51
	02/16/2009	<1.0	<1.0	<1.0	<1.0	16.48	80.35
	05/22/2009	<1.0	<1.0	<1.0	<1.0	14.43	82.40
	08/31/2009	<1.0	<1.0	<1.0	<1.0	11.12	85.71
	11/24/2009	<1.0	<1.0	<1.0	<1.0	11.38	85.45
	02/25/2010	Frozen - Not Sampled				Frozen	NA
	05/13/2010	<1.0	<1.0	<1.0	<1.0	15.28	81.55
	08/30/2010	<1.0	<1.0	<1.0	<1.0	11.16	85.67
	11/23/2010	<1.0	<1.0	<1.0	<1.0	12.75	84.08
	02/24/2011	<1.0	<1.0	<1.0	<1.0	15.25	81.58
	05/25/2011	<1.0	<1.0	<1.0	<1.0	14.37	82.46
	08/25/2011	<1.0	<1.0	<1.0	<1.0	10.94	85.89



TABLE 1 (Continued)
GROUNDWATER ANALYTICAL AND FIELD RESULTS
FRITZLER UPRR 31-31
WELD COUNTY, COLORADO
KERR-MCGEE OIL & GAS ONSHORE LP

Well Name	Date	Benzene (ug/L)	Toluene (ug/L)	Ethylbenzene (ug/L)	Xylenes (ug/L)	Depth Water/ (Product Thickness) (ft bgs)	Relative GW Elev. (ft)
MW06	11/29/2011	<1.0	<1.0	<1.0	<1.0	12.00	84.83
	02/23/2012	<1.0	<1.0	<1.0	<1.0	15.05	81.78
	05/22/2012	<1.0	<1.0	<1.0	<1.0	14.28	82.55
	08/28/2012	<1.0	<1.0	<1.0	<1.0	13.84	82.99
	11/29/2012	<1.0	<1.0	<1.0	<1.0	15.42	81.41
	02/27/2013	Not Sampled due to snow cover				Not Found	NA
	05/30/2013	<1.0	<1.0	<1.0	<1.0	17.15	79.68
	08/26/2013	<1.0	<1.0	<1.0	<1.0	13.60	83.23
	08/28/2013	Removed from monitoring				NM	NA
	12/10/2013	Surveyed - Not Sampled				11.69	84.58
MW07	04/09/2008	<1.0	<1.0	<1.0	<1.0	23.82	74.16
	05/28/2008	<1.0	<1.0	<1.0	<1.0	17.12	80.68
	08/25/2008	<1.0	<1.0	<1.0	<1.0	13.45	84.53
	12/01/2008	14	120	120	1300	13.79	84.19
	02/16/2009	<1.0	<1.0	7.3	26	16.73	81.25
	05/22/2009	1.1	<1.0	11	43	14.87	83.11
	08/31/2009	<1.0	<1.0	160	590	11.53	86.45
	11/24/2009	<1.0	<1.0	35	<1.0	12.67	85.31
	02/25/2010	<1.0	<1.0	<1.0	3.6	16.28	81.70
	05/13/2010	<1.0	<1.0	<1.0	<1.0	15.77	82.21
	08/30/2010	<1.0	6.5	390	3900	11.90	86.08
	11/23/2010	<1.0	<1.0	2.7	<1.0	13.21	84.77
	02/24/2011	<1.0	<1.0	<1.0	<1.0	16.60	81.38
	05/25/2011	<1.0	<1.0	<1.0	<1.0	14.95	83.03
	08/25/2011	<1.0	<1.0	81	<1.0	11.00	87.71
	11/29/2011	<1.0	<1.0	<1.0	<1.0	12.10	86.61
	02/23/2012	<1.0	<1.0	<1.0	<1.0	15.07	83.64
	05/22/2012	<1.0	<1.0	<1.0	<1.0	14.30	84.41
	08/28/2012	<1.0	<1.0	<1.0	<1.0	13.91	84.80
	11/28/2012	<1.0	<1.0	<1.0	<1.0	15.55	83.16
	02/27/2013	<1.0	<1.0	<1.0	<1.0	18.53	80.18
	05/30/2013	<1.0	<1.0	<1.0	<1.0	17.25	81.46
	08/26/2013	<1.0	<1.0	<1.0	<1.0	15.57	83.14
	11/18/2013	<1.0	<1.0	135	35.3	11.21	85.45
	12/10/2013	Surveyed - Not Sampled				12.31	84.43



TABLE 1 (Continued)
GROUNDWATER ANALYTICAL AND FIELD RESULTS
FRITZLER UPRR 31-31
WELD COUNTY, COLORADO
KERR-MCGEE OIL & GAS ONSHORE LP

Well Name	Date	Benzene (ug/L)	Toluene (ug/L)	Ethylbenzene (ug/L)	Xylenes (ug/L)	Depth Water/ (Product Thickness) (ft bgs)	Relative GW Elev. (ft)
MW07	02/11/2014	<1.0	<1.0	<1.0	<1.0	14.06	82.60
	05/23/2014	<1.0	<1.0	1.9	<1.0	12.63	84.11
	09/30/2014	<1.0	<1.0	83.9	277	10.10	86.64
	11/25/2014	<1.0	<1.0	8.8	10.5	9.26	87.48
MW08	04/09/2008	27000	23000	990	14000	17.92	NA
	05/28/2008	26000	17000	920	13000	16.31 (0.01)	NA
	08/25/2008	23000	16000	880	12000	14.33	NA
	12/01/2008	24000	35000	30000	190000	12.73	NA
	02/16/2009	Product - Not Sampled				15.89 (0.10)	NA
	05/22/2009	Product - Not Sampled				13.63	NA
	08/31/2009	Product - Not Sampled				10.72 (0.70)	NA
	11/24/2009	Product - Not Sampled				PVC Bent	NA
	02/25/2010	Product - Not Sampled				NM	NA
	08/30/2010	14000	3200	260	4500	PVC Bent	NA
	11/23/2010	17000	3600	340	5700	PVC Blocked	NA
	02/24/2011	16000	5700	240	4400	PVC Blocked	NA
	05/25/2011	3500	490	68	1400	PVC Blocked	NA
	07/25/2011	13000	3600	120	4300	11.27	NA
	08/25/2011	28000	8200	540	6700	PVC Blocked	NA
	11/29/2011	21000	11000	640	10000	11.68	NA
	02/23/2012	18000	12000	460	8100	13.05	NA
	05/10/2012	360	340	57	1000	13.86	NA
	05/18/2012	17000	16000	3000	19000	14.33	NA
	05/22/2012	9400	7000	110	7900	15.35	NA
	06/04/2012	14000	11000	250	8700	13.92	NA
	08/28/2012	6100	6800	290	8700	13.72	NA
	10/05/2012	<1.0	<1.0	<1.0	<1.0	14.23	NA
	10/17/2012	1800	720	<1.0	2100	14.83	NA
	11/05/2012	7300	10000	340	8100	14.61	NA
	11/13/2012	1200	1700	100	1600	15.02	NA
	11/29/2012	4600	8800	490	7800	15.26	NA
	02/27/2013	3300	9500	570	9100	18.26	NA
	12/10/2013	Surveyed - Not Sampled				12.41	NA
MW08 destroyed as of 11/25/2014							
MW08R	05/30/2013	<1.0	<1.0	<1.0	<1.0	17.50	79.53



TABLE 1 (Continued)
GROUNDWATER ANALYTICAL AND FIELD RESULTS
FRITZLER UPRR 31-31
WELD COUNTY, COLORADO
KERR-MCGEE OIL & GAS ONSHORE LP

Well Name	Date	Benzene (ug/L)	Toluene (ug/L)	Ethylbenzene (ug/L)	Xylenes (ug/L)	Depth Water/ (Product Thickness) (ft bgs)	Relative GW Elev. (ft)
MW08R	08/26/2013	100	59	7.1	69	13.86	83.17
	11/18/2013	7.5	2.9	1.0	15.5	11.21	85.46
	02/11/2014	18.2	1.1	82.5	318	14.09	82.58
	05/23/2014	21.3	1.0	197	1220	12.76	84.07
	09/30/2014	42.8	14.4	314	7180	7.57	89.26
	11/25/2014	Destroyed - Not Sampled				NM	NA
	12/10/2014	<1.0	<1.0	<1.0	<1.0	6.69	90.14
MW09	04/09/2008	1800	23000	1100	16000	17.75	78.38
	05/28/2008	79	1500	220	220	16.08	80.05
	08/25/2008	210	2400	400	2900	13.85	82.28
	12/01/2008	55	800	360	5500	16.71	83.42
	02/16/2009	16	330	170	500	15.73	80.40
	05/22/2009	1.4	820	240	2200	13.85	82.28
	08/31/2009	7.6	1700	200	3200	10.51	85.62
	11/24/2009	5.0	1900	240	2200	PVC Bent	NA
	02/25/2010	5.8	2100	140	250	PVC Bent	NA
	05/13/2010	8.3	28000	280	3800	PVC Bent	NA
	08/30/2010	2.6	990	230	2900	PVC Bent	NA
	11/23/2010	1.0	140	170	510	PVC Bent	NA
	02/24/2011	1.2	88	120	1400	PVC Bent	NA
	05/25/2011	<1.0	31	35	360	PVC Bent	NA
	08/25/2011	<1.0	54	120	1100	PVC Bent	NA
	11/29/2011	<1.0	20	140	1400	PVC Bent	NA
	02/23/2012	<10	<10	<1.0	<1.0	PVC Bent	NA
	05/22/2012	1.2	97	100	320	PVC Bent	NA
	08/28/2012	<1.0	1.3	5.3	81	PVC Bent	NA
	11/28/2012	<1.0	<1.0	<1.0	<1.0	PVC Bent	NA
	02/27/2013	<1.0	98	48	1000	PVC Bent	NA
	05/30/2013	<1.0	130	110	1800	PVC Blocked	NA
	08/26/2013	<1.0	18	42	620	PVC Bent	NA
	11/18/2013	<1.0	<1.0	4.5	60.6	PVC Blocked	NA
	12/10/2013	Surveyed - Not Sampled				11.95	84.43
	02/11/2014	<1.0	<1.0	9.9	168	PVC Blocked	NA
	05/23/2014	<1.0	3.3	124	1540	PVC Bent	NA
	09/30/2014	<1.0	<1.0	105	495	PVC Blocked	NA



TABLE 1 (Continued)
GROUNDWATER ANALYTICAL AND FIELD RESULTS
FRITZLER UPRR 31-31
WELD COUNTY, COLORADO
KERR-MCGEE OIL & GAS ONSHORE LP

Well Name	Date	Benzene (ug/L)	Toluene (ug/L)	Ethylbenzene (ug/L)	Xylenes (ug/L)	Depth Water/ (Product Thickness) (ft bgs)	Relative GW Elev. (ft)
MW09	11/25/2014	<1.0	<1.0	95.2	921	NM	NA
MW10	09/26/2008	3200	<1.0	100	380	12.37	82.12
	12/01/2008	6300	33	270	780	13.00	81.55
	02/16/2009	18000	<1.0	520	290	16.00	78.55
	05/22/2009	13000	3.0	360	2700	14.11	80.44
	08/31/2009	35000	3.4	480	5700	10.74	83.81
	11/24/2009	31000	3.2	<1.0	8600	PVC Bent	NA
	02/25/2010	14000	1.6	180	120	PVC Bent	NA
	05/13/2010	12000	2.0	1500	9800	PVC Bent	NA
	08/30/2010	3.4	<1.0	<1.0	4.6	PVC Bent	NA
	11/23/2010	<1.0	<1.0	<1.0	<1.0	PVC Bent	NA
	02/24/2011	<1.0	<1.0	<1.0	<1.0	PVC Bent	NA
	05/25/2011	<1.0	<1.0	<1.0	<1.0	PVC Bent	NA
	08/25/2011	860	8.5	3.3	69	PVC Bent	NA
	11/29/2011	4.3	<1.0	1.3	16	PVC Bent	NA
	02/23/2012	<1.0	<1.0	<1.0	<1.0	PVC Bent	NA
	05/22/2012	<1.0	<1.0	<1.0	<1.0	PVC Bent	NA
	08/28/2012	<1.0	<1.0	<1.0	<1.0	PVC Bent	NA
	11/29/2012	<1.0	<1.0	<1.0	<1.0	PVC Bent	NA
	02/27/2013	<1.0	<1.0	<1.0	<1.0	PVC Bent	NA
	05/30/2013	<1.0	<1.0	<1.0	<1.0	PVC Bent	NA
	08/26/2013	16	<1.0	7.8	89	11.46	83.04
	11/18/2013	1.3	<1.0	<1.0	<1.0	10.65	85.29
	12/10/2013	Surveyed - Not Sampled				11.79	84.29
	02/11/2014	12.9	<1.0	<1.0	<1.0	13.54	82.40
	05/23/2014	50.7	<1.0	2.3	5.4	12.16	83.92
	09/30/2014	721	<1.0	16.5	39.8	9.54	86.54
	11/25/2014	2070	<5.0	24.0	129	9.32	86.76
MW11	09/26/2008	40	13	1.7	12	12.16	83.83
	12/01/2008	1.0	<1.0	14	8.6	13.04	83.29
	02/16/2009	150	<1.0	<1.0	<1.0	16.08	80.25
	05/22/2009	1600	2200	160	1400	14.17	82.16
	08/31/2009	240	81	18	480	10.83	85.50
	11/24/2009	5.1	<1.0	<1.0	2.4	10.94	85.39



TABLE 1 (Continued)
GROUNDWATER ANALYTICAL AND FIELD RESULTS
FRITZLER UPRR 31-31
WELD COUNTY, COLORADO
KERR-MCGEE OIL & GAS ONSHORE LP

Well Name	Date	Benzene (ug/L)	Toluene (ug/L)	Ethylbenzene (ug/L)	Xylenes (ug/L)	Depth Water/ (Product Thickness) (ft bgs)	Relative GW Elev. (ft)
MW11	02/25/2010	110	<1.0	4.0	28	PVC Bent	NA
	05/13/2010	1000	140	14	120	15.08	81.25
	08/30/2010	990	860	43	670	11.20	85.13
	11/23/2010	36	9.4	2.9	31	12.46	83.87
	02/24/2011	230	9.3	33	360	15.06	81.27
	05/25/2011	1900	1600	42	800	9.65	86.68
	07/25/2011	<1.0	<1.0	<1.0	<1.0	11.17	85.16
	08/25/2011	19	23	35	290	10.62	85.71
	11/29/2011	3.2	<1.0	3.3	41	11.75	84.58
	02/23/2012	16	<1.0	3.9	58	14.53	81.80
	05/22/2012	7.2	<1.0	<1.0	9.7	13.90	82.43
	08/28/2012	7.5	<1.0	1.2	8.6	13.60	82.73
	10/17/2012	<1.0	<1.0	<1.0	<1.0	14.23	NA
	11/28/2012	<1.0	<1.0	<1.0	<1.0	15.13	81.20
	02/27/2013	130	<1.0	56	280	18.41	77.92
	05/03/2013	74	<1.0	85	910	17.59	78.74
	08/26/2013	<1.0	<1.0	3.0	21	13.29	83.04
	11/18/2013	<1.0	<1.0	<1.0	2.1	10.99	85.34
	12/10/2013	Surveyed - Not Sampled				11.98	84.32
	02/11/2014	<1.0	<1.0	1.2	<1.0	13.86	82.47
	05/23/2014	<1.0	<1.0	6.1	13.6	12.37	83.93
	09/30/2014	<1.0	<1.0	<1.0	<1.0	9.77	86.53
	11/25/2014	<1.0	<1.0	1.1	6.9	8.95	87.35
MW12	09/26/2008	<1.0	<1.0	<1.0	<1.0	12.50	81.91
	12/01/2008	<1.0	<1.0	<1.0	<1.0	12.84	81.47
	02/16/2009	<1.0	<1.0	<1.0	<1.0	15.91	78.40
	05/22/2009	<1.0	<1.0	<1.0	<1.0	14.01	80.30
	08/31/2009	<1.0	<1.0	<1.0	<1.0	10.69	83.62
	11/24/2009	<1.0	<1.0	<1.0	<1.0	11.81	82.50
	02/25/2010	<1.0	<1.0	<1.0	<1.0	15.43	78.88
	05/13/2010	<1.0	<1.0	<1.0	<1.0	14.91	79.40
	08/30/2010	<1.0	<1.0	<1.0	<1.0	11.01	83.30
	11/23/2010	<1.0	<1.0	<1.0	<1.0	12.32	81.99
	02/24/2011	<1.0	<1.0	<1.0	<1.0	14.91	79.40
	05/25/2011	<1.0	<1.0	<1.0	<1.0	14.17	80.14



TABLE 1 (Continued)
GROUNDWATER ANALYTICAL AND FIELD RESULTS
FRITZLER UPRR 31-31
WELD COUNTY, COLORADO
KERR-MCGEE OIL & GAS ONSHORE LP

Well Name	Date	Benzene (ug/L)	Toluene (ug/L)	Ethylbenzene (ug/L)	Xylenes (ug/L)	Depth Water/ (Product Thickness) (ft bgs)	Relative GW Elev. (ft)
MW12	08/25/2011	<1.0	<1.0	<1.0	<1.0	PVC Bent	NA
	11/29/2011	<1.0	<1.0	<1.0	<1.0	11.58	82.73
	02/23/2012	<1.0	<1.0	<1.0	<1.0	14.62	79.69
	05/22/2012	<1.0	<1.0	<1.0	<1.0	PVC Bent	NA
	08/28/2012	<1.0	<1.0	<1.0	<1.0	13.46	80.85
	11/29/2012	<1.0	<1.0	<1.0	<1.0	14.52	79.79
	02/27/2013	<1.0	<1.0	<1.0	<1.0	17.80	76.51
	05/30/2013	<1.0	<1.0	<1.0	<1.0	PVC Blocked	NA
	08/26/2013	<1.0	<1.0	<1.0	<1.0	11.30	83.01
	11/18/2013	<1.0	<1.0	<1.0	<1.0	8.92	85.39
	12/10/2013	Surveyed - Not Sampled				11.95	84.36
	02/11/2014	<1.0	<1.0	<1.0	<1.0	11.80	82.51
	05/23/2014	<1.0	<1.0	<1.0	<1.0	12.31	84.00
	09/30/2014	<1.0	<1.0	<1.0	<1.0	9.00	87.31
	11/25/2014	<1.0	<1.0	<1.0	<1.0	7.53	88.78
MW13	01/13/2010	<1.0	<1.0	<1.0	<1.0	NM	NA
	02/25/2010	<1.0	<1.0	<1.0	<1.0	15.65	80.70
	05/13/2010	<1.0	<1.0	<1.0	<1.0	15.18	81.17
	08/30/2010	19	<1.0	<1.0	<1.0	11.27	85.08
	11/23/2010	<1.0	<1.0	<1.0	<1.0	12.54	83.81
	02/24/2011	<1.0	<1.0	<1.0	<1.0	15.17	81.18
	05/25/2011	<1.0	<1.0	<1.0	<1.0	14.39	81.96
	08/25/2011	<1.0	<1.0	<1.0	<1.0	10.73	85.62
	11/29/2011	<1.0	<1.0	<1.0	<1.0	11.79	84.56
	02/23/2012	<1.0	<1.0	<1.0	<1.0	14.82	81.53
	05/22/2012	<1.0	<1.0	<1.0	<1.0	14.09	82.26
	08/28/2012	<1.0	<1.0	<1.0	<1.0	13.65	82.70
	11/29/2012	<1.0	<1.0	<1.0	<1.0	15.24	81.11
	02/27/2013	<1.0	<1.0	<1.0	<1.0	18.61	77.74
	05/30/2013	<1.0	<1.0	<1.0	<1.0	17.01	79.34
	08/26/2013	<1.0	<1.0	<1.0	<1.0	13.44	82.91
	08/28/2013	Removed from monitoring				NM	NA
	12/10/2013	Surveyed - Not Sampled				12.11	84.24
MW14	01/13/2010	<1.0	<1.0	<1.0	<1.0	NM	NA



TABLE 1 (Continued)
GROUNDWATER ANALYTICAL AND FIELD RESULTS
FRITZLER UPRR 31-31
WELD COUNTY, COLORADO
KERR-MCGEE OIL & GAS ONSHORE LP

Well Name	Date	Benzene (ug/L)	Toluene (ug/L)	Ethylbenzene (ug/L)	Xylenes (ug/L)	Depth Water/ (Product Thickness) (ft bgs)	Relative GW Elev. (ft)
MW14	02/25/2010	<1.0	<1.0	<1.0	<1.0	15.74	79.76
	05/13/2010	<1.0	<1.0	<1.0	<1.0	15.32	80.18
	08/30/2010	<1.0	<1.0	<1.0	<1.0	11.37	84.13
	11/23/2010	<1.0	<1.0	<1.0	<1.0	PVC Bent	NA
	02/24/2011	<1.0	<1.0	<1.0	<1.0	PVC Bent	NA
	05/25/2011	<1.0	<1.0	<1.0	<1.0	PVC Bent	NA
	08/25/2011	<1.0	<1.0	<1.0	<1.0	PVC Bent	NA
	11/29/2011	Damaged - Not Sampled				PVC Bent	NA
	02/23/2012	Damaged - Not Sampled				PVC Bent	NA
	05/22/2012	<1.0	<1.0	<1.0	<1.0	PVC Bent	NA
	08/28/2012	<1.0	<1.0	<1.0	<1.0	13.34	81.74
	11/29/2012	<1.0	<1.0	<1.0	<1.0	14.85	80.23
	02/27/2013	Sample Bottles Broken At Lab				18.20	76.88
	05/30/2013	<1.0	<1.0	<1.0	<1.0	PVC Blocked	NA
	08/26/2013	<1.0	<1.0	<1.0	<1.0	12.26	82.82
	11/18/2013	<1.0	<1.0	<1.0	<1.0	10.95	85.13
	12/10/2013	Surveyed - Not Sampled				12.07	84.13
	02/11/2014	<1.0	<1.0	<1.0	<1.0	13.80	82.28
	05/23/2014	<1.0	<1.0	<1.0	14.4	12.52	83.68
	09/30/2014	3.9	<1.0	<1.0	<1.0	9.91	86.29
	11/25/2014	1.1	<1.0	<1.0	<1.0	9.56	86.64
MW15	01/13/2010	14000	<1.0	4.4	<1.0	NM	NA
	02/25/2010	33	<1.0	<1.0	<1.0	15.52	80.48
	05/13/2010	510	<1.0	33	150	15.04	80.96
	08/30/2010	91	15	2.7	41	11.08	84.92
	11/23/2010	<1.0	<1.0	<1.0	<1.0	12.37	83.63
	02/24/2011	<1.0	<1.0	<1.0	<1.0	15.05	80.95
	05/25/2011	<1.0	<1.0	<1.0	<1.0	14.28	81.72
	08/25/2011	1100	<1.0	16	72	10.46	85.54
	11/29/2011	41	<1.0	<1.0	3.4	11.66	84.34
	02/23/2012	20	<1.0	<1.0	<1.0	14.69	81.31
	05/22/2012	<1.0	<1.0	<1.0	<1.0	13.86	82.14
	08/28/2012	<1.0	<1.0	<1.0	<1.0	13.84	82.52
	11/29/2012	<1.0	<1.0	<1.0	<1.0	15.08	80.92
	02/27/2013	<1.0	<1.0	<1.0	<1.0	18.51	77.49



TABLE 1 (Continued)
GROUNDWATER ANALYTICAL AND FIELD RESULTS
FRITZLER UPRR 31-31
WELD COUNTY, COLORADO
KERR-MCGEE OIL & GAS ONSHORE LP

Well Name	Date	Benzene (ug/L)	Toluene (ug/L)	Ethylbenzene (ug/L)	Xylenes (ug/L)	Depth Water/ (Product Thickness) (ft bgs)	Relative GW Elev. (ft)
MW15	05/30/2013	<1.0	<1.0	<1.0	<1.0	15.71	80.29
	08/26/2013	<1.0	<1.0	<1.0	<1.0	13.31	82.69
	11/18/2013	167	<1.0	4.3	21.0	10.98	85.02
	12/10/2013	Surveyed - Not Sampled				11.83	84.04
	02/11/2014	2.6	<1.0	<1.0	<1.0	13.81	82.19
	05/23/2014	171	<1.0	8.5	<1.0	12.30	83.57
	09/30/2014	<1.0	<1.0	<1.0	<1.0	9.56	86.31
	11/25/2014	<1.0	<1.0	<1.0	<1.0	8.89	86.98
MW16	01/13/2010	4.5	<1.0	<1.0	<1.0	NM	NA
	02/25/2010	1.6	<1.0	<1.0	<1.0	15.67	80.62
	05/13/2010	450	24	23	150	15.17	81.12
	08/30/2010	<1.0	<1.0	<1.0	<1.0	11.24	85.05
	11/23/2010	<1.0	<1.0	<1.0	<1.0	12.54	83.75
	02/24/2011	<1.0	<1.0	<1.0	<1.0	15.15	81.14
	05/25/2011	20	<1.0	<1.0	<1.0	14.39	81.90
	08/25/2011	<1.0	<1.0	<1.0	<1.0	10.65	85.64
	11/29/2011	<1.0	<1.0	<1.0	<1.0	11.83	84.46
	02/23/2012	<1.0	<1.0	<1.0	<1.0	14.81	81.48
	05/22/2012	<1.0	<1.0	<1.0	<1.0	14.15	82.14
	08/28/2012	<1.0	<1.0	<1.0	<1.0	13.67	82.62
	11/29/2012	<1.0	<1.0	<1.0	<1.0	15.15	81.14
	02/27/2013	<1.0	<1.0	<1.0	<1.0	18.50	77.79
	05/30/2013	38	<1.0	<1.0	<1.0	17.04	79.25
	08/26/2013	<1.0	<1.0	<1.0	<1.0	13.47	82.82
	11/18/2013	<1.0	<1.0	<1.0	<1.0	11.10	85.19
	12/10/2013	Surveyed - Not Sampled				11.95	84.20
	02/11/2014	<1.0	<1.0	<1.0	<1.0	13.95	82.34
	05/23/2014	<1.0	<1.0	<1.0	<1.0	12.40	83.75
	09/30/2014	<1.0	<1.0	<1.0	<1.0	9.76	86.39
	11/25/2014	<1.0	<1.0	<1.0	<1.0	8.81	87.34
MW17	01/21/2010	76	<1.0	<1.0	<1.0	NM	NA
	02/25/2010	1100	<1.0	<1.0	<1.0	15.39	80.41
	05/13/2010	<1.0	<1.0	<1.0	2.2	15.05	80.75
	08/30/2010	<1.0	<1.0	<1.0	<1.0	10.95	84.85



TABLE 1 (Continued)
GROUNDWATER ANALYTICAL AND FIELD RESULTS
FRITZLER UPRR 31-31
WELD COUNTY, COLORADO
KERR-MCGEE OIL & GAS ONSHORE LP

Well Name	Date	Benzene (ug/L)	Toluene (ug/L)	Ethylbenzene (ug/L)	Xylenes (ug/L)	Depth Water/ (Product Thickness) (ft bgs)	Relative GW Elev. (ft)
MW17	11/23/2010	<1.0	<1.0	<1.0	<1.0	12.29	83.51
	02/24/2011	<1.0	<1.0	<1.0	<1.0	14.99	80.81
	05/25/2011	<1.0	<1.0	<1.0	<1.0	14.23	81.57
	08/25/2011	150	<1.0	<1.0	<1.0	10.38	85.42
	11/29/2011	<1.0	<1.0	<1.0	<1.0	11.58	84.22
	02/23/2012	<1.0	<1.0	<1.0	<1.0	14.58	81.22
	05/22/2012	<1.0	<1.0	<1.0	<1.0	13.83	81.97
	08/28/2012	<1.0	<1.0	<1.0	<1.0	13.44	82.36
	11/29/2012	<1.0	<1.0	<1.0	<1.0	15.02	80.78
	02/27/2013	<1.0	<1.0	<1.0	<1.0	18.43	77.37
	05/30/2013	<1.0	<1.0	<1.0	<1.0	16.85	78.95
	08/26/2013	<1.0	<1.0	<1.0	<1.0	13.27	82.53
	11/18/2013	<1.0	<1.0	<1.0	<1.0	10.94	84.86
	12/10/2013	Surveyed - Not Sampled				11.88	83.89
	02/11/2014	<1.0	<1.0	<1.0	<1.0	13.76	82.03
	05/23/2014	6.3	<1.0	<1.0	<1.0	12.39	83.38
	09/30/2014	<1.0	<1.0	<1.0	<1.0	9.76	86.01
	11/25/2014	<1.0	<1.0	<1.0	<1.0	8.92	86.85
MW18	05/04/2010	<1.0	<1.0	<1.0	<1.0	NM	NA
	08/30/2010	<1.0	<1.0	<1.0	<1.0	10.92	84.70
	11/23/2010	<1.0	<1.0	<1.0	<1.0	9.56	86.06
	02/24/2011	<1.0	<1.0	<1.0	<1.0	15.25	80.37
	05/25/2011	<1.0	<1.0	<1.0	<1.0	14.23	81.39
	08/25/2011	1.7	<1.0	<1.0	<1.0	10.34	85.28
	11/29/2011	<1.0	<1.0	<1.0	<1.0	11.48	84.14
	02/23/2012	<1.0	<1.0	<1.0	<1.0	14.57	81.05
	05/22/2012	<1.0	<1.0	<1.0	<1.0	13.85	81.77
	08/28/2012	<1.0	<1.0	<1.0	<1.0	13.43	82.19
	11/29/2012	<1.0	<1.0	<1.0	<1.0	14.99	80.63
	02/27/2013	<1.0	<1.0	<1.0	<1.0	18.43	77.19
	05/30/2013	<1.0	<1.0	<1.0	<1.0	16.85	78.77
	08/26/2013	<1.0	<1.0	<1.0	<1.0	13.27	82.35
	08/28/2013	Removed from monitoring				NM	NA
	12/10/2013	Surveyed - Not Sampled				11.86	83.73



TABLE 1 (Continued)
GROUNDWATER ANALYTICAL AND FIELD RESULTS
FRITZLER UPRR 31-31
WELD COUNTY, COLORADO
KERR-MCGEE OIL & GAS ONSHORE LP

Well Name	Date	Benzene (ug/L)	Toluene (ug/L)	Ethylbenzene (ug/L)	Xylenes (ug/L)	Depth Water/ (Product Thickness) (ft bgs)	Relative GW Elev. (ft)
MW19	05/05/2010	31	<1.0	<1.0	<1.0	NM	NA
	08/30/2010	<1.0	<1.0	<1.0	<1.0	10.99	84.86
	11/23/2010	<1.0	<1.0	<1.0	<1.0	12.32	83.53
	02/24/2011	<1.0	<1.0	<1.0	<1.0	14.99	80.86
	05/25/2011	<1.0	<1.0	<1.0	<1.0	14.24	81.61
	08/25/2011	<1.0	<1.0	<1.0	<1.0	10.40	85.45
	11/29/2011	<1.0	<1.0	<1.0	<1.0	11.54	84.31
	02/23/2012	<1.0	<1.0	<1.0	<1.0	14.62	81.23
	05/22/2012	<1.0	<1.0	<1.0	<1.0	13.81	82.04
	08/28/2012	<1.0	<1.0	<1.0	<1.0	13.46	82.39
	11/29/2012	<1.0	<1.0	<1.0	<1.0	14.96	80.89
	02/27/2013	<1.0	<1.0	<1.0	<1.0	18.37	77.48
	05/30/2013	<1.0	<1.0	<1.0	<1.0	16.87	78.98
	08/26/2013	<1.0	<1.0	<1.0	<1.0	13.29	82.56
	11/18/2013	<1.0	<1.0	<1.0	<1.0	10.95	84.90
	12/10/2013	Surveyed - Not Sampled				11.85	83.94
	02/11/2014	<1.0	<1.0	<1.0	<1.0	13.77	82.08
	05/23/2014	<1.0	<1.0	<1.0	<1.0	12.36	83.43
	09/30/2014	<1.0	<1.0	<1.0	<1.0	9.66	86.13
	11/25/2014	<1.0	<1.0	<1.0	<1.0	8.54	87.25
MW20	05/05/2010	<1.0	<1.0	<1.0	<1.0	NM	NA
	08/30/2010	<1.0	<1.0	<1.0	<1.0	11.13	NA
	11/23/2010	<1.0	<1.0	<1.0	<1.0	12.44	NA
	02/24/2011	<1.0	<1.0	<1.0	<1.0	15.01	NA
	05/25/2011	<1.0	<1.0	<1.0	<1.0	14.38	NA
	08/25/2011	<1.0	<1.0	<1.0	<1.0	10.55	NA
MW20 destroyed as of 11/29/2011							
MW20R	05/22/2012	<1.0	<1.0	<1.0	<1.0	13.73	82.00
	08/28/2012	<1.0	<1.0	<1.0	<1.0	13.37	82.36
	11/29/2012	<1.0	<1.0	<1.0	<1.0	NM	NA
	02/27/2013	<1.0	<1.0	<1.0	<1.0	18.03	77.70
	05/30/2013	<1.0	<1.0	<1.0	<1.0	16.79	78.94
	08/26/2013	<1.0	<1.0	<1.0	<1.0	13.21	82.52
	11/18/2013	<1.0	<1.0	<1.0	<1.0	10.92	84.81
	12/10/2013	Surveyed - Not Sampled				11.98	83.86



TABLE 1 (Continued)
GROUNDWATER ANALYTICAL AND FIELD RESULTS
FRITZLER UPRR 31-31
WELD COUNTY, COLORADO
KERR-MCGEE OIL & GAS ONSHORE LP

Well Name	Date	Benzene (ug/L)	Toluene (ug/L)	Ethylbenzene (ug/L)	Xylenes (ug/L)	Depth Water/ (Product Thickness) (ft bgs)	Relative GW Elev. (ft)
MW20R	02/11/2014	<1.0	<1.0	<1.0	<1.0	13.72	82.01
	05/23/2014	<1.0	<1.0	<1.0	<1.0	12.49	83.35
	09/30/2014	<1.0	<1.0	<1.0	<1.0	PVC Bent	NA
	11/25/2014	<1.0	<1.0	<1.0	<1.0	8.03	87.81
MW21	05/07/2010	28	<1.0	<1.0	<1.0	NM	NA
	08/30/2010	<1.0	<1.0	<1.0	<1.0	10.93	81.96
	11/23/2010	<1.0	<1.0	<1.0	<1.0	12.26	80.63
	02/24/2011	<1.0	<1.0	<1.0	<1.0	14.96	77.93
	05/25/2011	<1.0	<1.0	<1.0	<1.0	14.20	78.69
	08/25/2011	Not Found - Not Sampled				Not Found	NA
	11/29/2011	<1.0	<1.0	<1.0	<1.0	11.39	81.40
	02/23/2012	<1.0	<1.0	<1.0	<1.0	14.50	78.29
	05/22/2012	<1.0	<1.0	<1.0	<1.0	13.57	79.22
	08/28/2012	<1.0	<1.0	<1.0	<1.0	13.21	79.58
	11/29/2012	<1.0	<1.0	<1.0	<1.0	14.75	78.04
	02/27/2013	Not Sampled due to snow cover				Not Found	NA
	05/30/2013	<1.0	<1.0	<1.0	<1.0	16.73	78.91
	08/26/2013	<1.0	<1.0	<1.0	<1.0	14.10	81.54
	08/28/2013	Removed from monitoring				NM	NA
	12/10/2013	Surveyed - Not Sampled				11.65	83.89
CGWQS		5	1000	700	1400		

Notes: ug/L - micrograms per Liter
ft bgs - feet below ground surface
GW - Groundwater

Elev. - Elevation
Bold numbers indicate result exceeded standard.
< - less than

NA - Not Analyzed/Not Available
NM - Not Measured
CGWQS - Colorado Groundwater Quality Standards

Results in red indicate data from samples collected after start up of air sparge/soil vapor extraction remediation system and/or carbon slurry injection.

