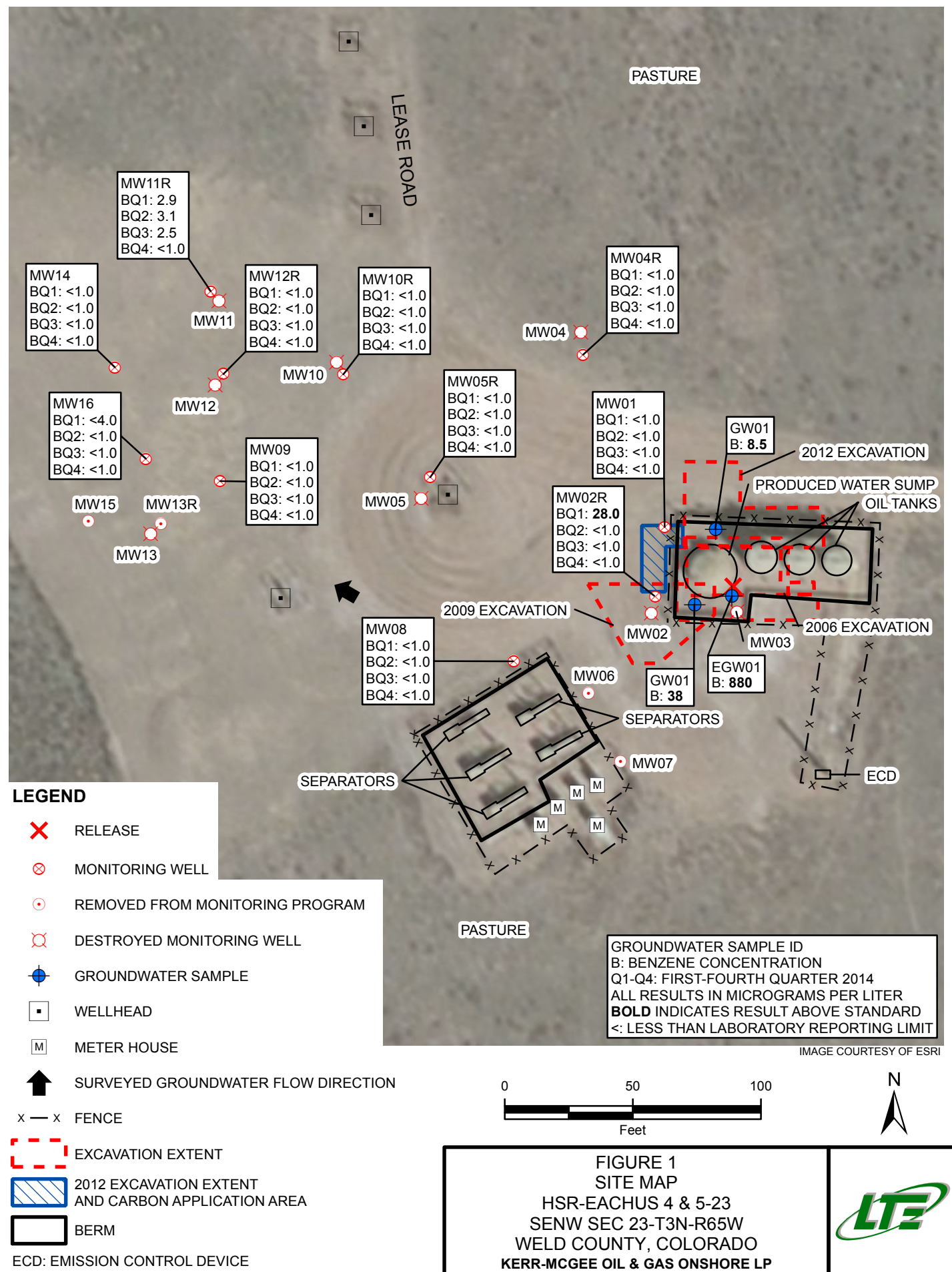


2014 ANNUAL PROJECT SUMMARY TABLE

Incident Date	Remediation No.	Well Name	API	Status	NFA Submitted	NFA Approved Date	Site Summary (monitoring/remediation/ wells installed or destroyed)	Wells Sampled (Last Quarter) 2014	Wells Exceeding 5 ug/L Benzene (Last Quarter Sampled 2014)	Benzene Range (ug/L) (Last Quarter 2014)	POC Established	2015 Recommendations	Well Reduction Request
12/2/2006 8/31/2009 10/5/2012	3950	HSR-Eachus 4 & 5-23	05-123-18125	Remediation	NO	NA	Quarterly groundwater monitoring since June 2007. A second release occurred at this site in Aug 2009. MW07 was removed from monitoring in 2011. A third release occurred at this site in October 2012. Carbon slurry (BOS 200) was applied to groundwater during October 2012 excavation activities. MW06, MW13R, and MW15 were removed from monitoring in 2013. MW16 installed November 2013. Carbon slurry (BOS 200) injections completed in March 2014 and June 2014.	MW01, MW02R, MW04R, MW05R, MW08-MW12R, MW14, MW16	None	ND	YES	Quarterly groundwater monitoring will continue.	NA

Notes:  
NA - Not Applicable  
ND - Non-Detect  
NFA - No Further Action  
POC - Point of Compliance



**TABLE 1**  
**GROUNDWATER ANALYTICAL AND FIELD RESULTS**  
**HSR-EACHUS 3, 4, 5-23**  
**WELD COUNTY, COLORADO**  
**KERR-MCGEE OIL & GAS ONSHORE LP**

Well Name	Date	Benzene (ug/L)	Toluene (ug/L)	Ethylbenzene (ug/L)	Xylenes (ug/L)	Depth Water/ (Product Thickness) (ft bgs)	Relative GW Elev. (ft)
EGW01	12/18/2006	880	1800	270	2300	NM	NA
GW01	09/08/2009	38	16	4.1	160	NM	NA
	10/04/2012	8.5	37	4.2	62	NM	NA
MW01	06/07/2007	1200	940	240	1700	6.15	91.80
	09/20/2007	590	120	42	650	4.25	92.50
	12/21/2007	110	<1.0	55	20	5.66	91.09
	03/19/2008	5.7	<1.0	9.5	<1.0	6.60	90.15
	06/13/2008	53	<1.0	99	43	5.39	91.36
	09/16/2008	170	<1.0	20	72	2.97	93.78
	12/11/2008	73	<1.0	64	4.4	4.40	92.45
	03/03/2009	61	<1.0	54	26	NM	NA
	06/15/2009	51	<1.0	39	12	1.89	94.86
	09/28/2009	40	<1.0	1.9	<1.0	4.14	92.61
	12/15/2009	13	<1.0	1.1	<1.0	4.04	92.71
	03/09/2010	12	<1.0	8.6	6.0	4.14	92.61
	06/17/2010	64	<1.0	7.8	13	1.35	95.40
	09/13/2010	11	<1.0	2.0	<1.0	3.26	93.49
	12/15/2010	15	<1.0	3.1	<1.0	4.47	92.28
	03/22/2011	2.0	<1.0	<1.0	<1.0	4.65	92.10
	06/21/2011	110	<1.0	7.2	<1.0	2.78	93.97
	09/07/2011	120	<1.0	11	<1.0	3.23	93.52
	12/21/2011	15	<1.0	5.5	<1.0	3.60	93.15
	03/14/2012	7.0	<1.0	1.9	<1.0	3.97	92.78
	06/18/2012	2.0	<1.0	<1.0	<1.0	3.90	92.85
	09/17/2012	42	<1.0	4.6	<1.0	4.02	92.73
	12/27/2012	4.1	<1.0	1.8	<1.0	PVC Bent	NA
	03/26/2013	1.7	<1.0	<1.0	<1.0	PVC Bent	NA
	06/20/2013	1.5	<1.0	<1.0	<1.0	2.85	93.90
	09/25/2013	12	<1.0	3.0	<1.0	2.77	93.98
	11/04/2013	Survey - Not Sampled				5.31	93.04
	12/12/2013	1.2	<1.0	4.3	<3.0	4.08	92.67
	03/31/2014	<1.0	<1.0	<1.0	<3.0	5.54	92.81
	04/07/2014	Survey - Not Sampled				5.64	92.71
	06/25/2014	<1.0	<1.0	<1.0	<1.0	3.99	94.36



**TABLE 1 (Continued)**  
**GROUNDWATER ANALYTICAL AND FIELD RESULTS**  
**HSR-EACHUS 3, 4, 5-23**  
**WELD COUNTY, COLORADO**  
**KERR-MCGEE OIL & GAS ONSHORE LP**

Well Name	Date	Benzene (ug/L)	Toluene (ug/L)	Ethylbenzene (ug/L)	Xylenes (ug/L)	Depth Water/ (Product Thickness) (ft bgs)	Relative GW Elev. (ft)
MW01	09/10/2014	<1.0	<1.0	<1.0	<1.0	4.82	93.53
	12/08/2014	<1.0	<1.0	<1.0	<1.0	5.90	92.45
MW02	06/07/2007	Product - Not Sampled				8.64 (1.00)	NA
	09/20/2007	10000	4000	430	6300	6.14	NA
	12/21/2007	16000	1600	470	7400	7.13	NA
	03/19/2008	17000	790	550	3600	9.95	NA
	06/13/2008	13000	260	450	4100	7.78	NA
	09/16/2008	17000	58	670	7200	3.89	NA
	12/11/2008	14000	25	320	6200	5.20	NA
	03/03/2009	18000	10	720	7200	5.59	NA
	06/15/2009	13000	11	390	3000	3.13	NA
MW02 destroyed as of 9/28/2009							
MW02R	12/15/2009	5900	<1.0	220	2100	5.85	91.71
	03/09/2010	1700	<1.0	82	140	5.50	92.06
	06/17/2010	610	<1.0	53	120	3.09	94.47
	09/13/2010	110	<1.0	28	36	4.41	93.15
	12/15/2010	69	<1.0	55	180	5.33	92.23
	03/22/2011	570	<1.0	120	230	5.74	91.82
	06/21/2011	250	<1.0	20	50	4.01	93.55
	09/07/2011	1000	<1.0	68	120	4.11	93.45
	12/21/2011	980	<1.0	37	4.6	4.55	92.71
	03/14/2012	1500	<1.0	20	<1.0	4.35	93.21
	06/18/2012	96	<1.0	1.9	<1.0	4.21	93.35
	09/17/2012	340	<1.0	11	14	5.22	92.34
	12/27/2012	270	<1.0	1.9	<1.0	7.27	90.29
	03/26/2013	910	<1.0	9.0	<1.0	6.80	90.76
	06/20/2013	320	<1.0	4.6	5.1	3.67	93.89
	09/25/2013	2.2	<1.0	<1.0	<1.0	3.00	94.56
	11/04/2013	Survey - Not Sampled				4.01	93.59
	12/12/2013	11.9	<1.0	<1.0	<3.0	4.48	93.08
	03/31/2014	28.0	<1.0	<1.0	<3.0	4.62	92.98
	04/07/2014	Survey - Not Sampled				4.70	92.91
	06/25/2014	<1.0	<1.0	<1.0	<1.0	3.05	94.56
	09/10/2014	<1.0	<1.0	<1.0	<1.0	3.83	93.78
	12/08/2014	<1.0	<1.0	<1.0	<1.0	4.88	92.73



**TABLE 1 (Continued)**  
**GROUNDWATER ANALYTICAL AND FIELD RESULTS**  
**HSR-EACHUS 3, 4, 5-23**  
**WELD COUNTY, COLORADO**  
**KERR-MCGEE OIL & GAS ONSHORE LP**

Well Name	Date	Benzene (ug/L)	Toluene (ug/L)	Ethylbenzene (ug/L)	Xylenes (ug/L)	Depth Water/ (Product Thickness) (ft bgs)	Relative GW Elev. (ft)
MW03	06/07/2007	4800	1300	50	1400	5.84	NA
	09/20/2007	280	12	7.9	74	4.76	NA
	12/21/2007	<1.0	<1.0	<1.0	<1.0	6.15	NA
	03/19/2008	1.9	1.5	<1.0	11	7.60	NA
	06/13/2008	6.2	<1.0	<1.0	13	6.40	NA
	09/16/2008	3.0	<1.0	<1.0	4.1	2.36	NA
	12/11/2008	2.0	<1.0	<1.0	3.3	4.58	NA
	03/03/2009	<1.0	<1.0	<1.0	<1.0	5.06	NA
	06/15/2009	<1.0	<1.0	<1.0	<1.0	2.71	NA
	09/28/2009	2.0	<1.0	<1.0	<1.0	4.56	NA
	12/15/2009	<1.0	<1.0	<1.0	<1.0	4.43	NA
	03/09/2010	1.4	<1.0	<1.0	<1.0	4.81	NA
	06/17/2010	<1.0	<1.0	<1.0	<1.0	2.46	NA
	09/13/2010	1.6	<1.0	<1.0	<1.0	3.98	NA
	12/15/2010	<1.0	<1.0	<1.0	<1.0	5.09	NA
	03/22/2011	<1.0	<1.0	<1.0	<1.0	5.51	NA
MW03 destroyed as of 6/21/2011							
MW04	10/18/2007	<1.0	<1.0	<1.0	<1.0	7.90	NA
	12/21/2007	<1.0	<1.0	<1.0	<1.0	10.18	NA
	03/19/2008	<1.0	<1.0	<1.0	<1.0	11.85	NA
	06/13/2008	<1.0	<1.0	<1.0	<1.0	10.63	NA
	09/16/2008	<1.0	<1.0	<1.0	<1.0	9.10	NA
	12/11/2008	<1.0	<1.0	<1.0	<1.0	10.27	NA
	03/03/2009	<1.0	<1.0	<1.0	<1.0	9.92	NA
	06/15/2009	<1.0	<1.0	<1.0	<1.0	1.92	NA
	09/28/2009	<1.0	<1.0	<1.0	<1.0	PVC Blocked	NA
	12/15/2009	<1.0	<1.0	<1.0	<1.0	8.30	NA
	03/09/2010	<1.0	<1.0	<1.0	<1.0	8.21	NA
	06/17/2010	<1.0	<1.0	<1.0	<1.0	PVC Blocked	NA
	09/13/2010	Damaged - Not Sampled				PVC Blocked	NA
MW04 destroyed as of 12/15/2010							
MW04R	07/26/2011	<1.0	<1.0	<1.0	<1.0	13.61	85.01
	09/07/2011	<1.0	<1.0	<1.0	<1.0	11.09	87.38
	12/21/2011	<1.0	<1.0	<1.0	<1.0	9.18	89.29
	03/14/2012	<1.0	<1.0	<1.0	<1.0	9.11	89.36



**TABLE 1 (Continued)**  
**GROUNDWATER ANALYTICAL AND FIELD RESULTS**  
**HSR-EACHUS 3, 4, 5-23**  
**WELD COUNTY, COLORADO**  
**KERR-MCGEE OIL & GAS ONSHORE LP**

Well Name	Date	Benzene (ug/L)	Toluene (ug/L)	Ethylbenzene (ug/L)	Xylenes (ug/L)	Depth Water/ (Product Thickness) (ft bgs)	Relative GW Elev. (ft)
MW04R	06/18/2012	<1.0	<1.0	<1.0	<1.0	8.90	89.57
	09/17/2012	<1.0	<1.0	<1.0	<1.0	8.03	90.44
	12/27/2012	<1.0	<1.0	<1.0	<1.0	9.02	89.45
	03/26/2013	<1.0	<1.0	<1.0	<1.0	8.30	90.17
	06/20/2013	<1.0	<1.0	<1.0	<1.0	7.89	90.58
	09/25/2013	<1.0	<1.0	<1.0	<1.0	7.75	90.72
	11/04/2013	Survey - Not Sampled				9.77	88.69
	12/12/2013	<1.0	<1.0	<1.0	<3.0	8.99	89.48
	03/31/2014	<1.0	<1.0	<1.0	<3.0	2.82	95.64
	04/07/2014	Survey - Not Sampled				13.60	85.04
	06/25/2014	<1.0	<1.0	<1.0	<1.0	7.09	91.55
	09/10/2014	<1.0	<1.0	<1.0	<1.0	7.23	91.41
	12/08/2014	<1.0	<1.0	<1.0	<1.0	9.42	89.22
MW05	09/20/2007	<1.0	<1.0	<1.0	<1.0	8.09	NA
	12/21/2007	1.7	<1.0	<1.0	<1.0	9.79	NA
	03/19/2008	48	<1.0	<1.0	<1.0	11.50	NA
	06/13/2008	2300	89	12	160	9.78	NA
	09/16/2008	5800	<1.0	29	89	7.70	NA
	12/11/2008	2600	<1.0	76	250	8.08	NA
	03/03/2009	1800	<1.0	26	7.1	8.82	NA
	06/15/2009	940	<1.0	43	7.2	6.64	NA
	09/28/2009	110	<1.0	34	<1.0	7.01	NA
	12/15/2009	9.0	<1.0	4.6	3.4	6.97	NA
	03/09/2010	2.6	<1.0	1.6	2.6	7.70	NA
	06/17/2010	12	<1.0	1.4	4.5	6.03	NA
	09/13/2010	31	<1.0	2.6	9.3	6.14	NA
	12/15/2010	3.3	<1.0	<1.0	<1.0	7.15	NA
	03/22/2011	2.1	<1.0	1.9	9.1	7.78	NA
MW05 destroyed as of 6/21/2011							
MW05R	07/26/2011	<1.0	<1.0	4.2	8.3	7.25	89.69
	09/07/2011	1.2	<1.0	7.6	5.5	6.86	89.98
	12/21/2011	<1.0	<1.0	1.7	<1.0	6.90	89.94
	03/14/2012	1.5	<1.0	1.8	<1.0	7.02	89.82
	06/18/2012	<1.0	<1.0	<1.0	<1.0	6.95	89.89
	09/17/2012	<1.0	<1.0	<1.0	<1.0	7.64	89.20



**TABLE 1 (Continued)**  
**GROUNDWATER ANALYTICAL AND FIELD RESULTS**  
**HSR-EACHUS 3, 4, 5-23**  
**WELD COUNTY, COLORADO**  
**KERR-MCGEE OIL & GAS ONSHORE LP**

Well Name	Date	Benzene (ug/L)	Toluene (ug/L)	Ethylbenzene (ug/L)	Xylenes (ug/L)	Depth Water/ (Product Thickness) (ft bgs)	Relative GW Elev. (ft)
MW05R	12/27/2012	<1.0	<1.0	<1.0	<1.0	8.35	88.49
	03/26/2013	<1.0	<1.0	<1.0	<1.0	7.75	89.09
	06/20/2013	<1.0	<1.0	<1.0	<1.0	6.28	90.56
	09/25/2013	<1.0	<1.0	<1.0	<1.0	6.20	90.64
	11/04/2013	Survey - Not Sampled				6.65	90.27
	12/12/2013	<1.0	<1.0	<1.0	<3.0	6.97	89.87
	03/31/2014	<1.0	<1.0	<1.0	<3.0	7.40	89.52
	04/07/2014	Survey - Not Sampled				8.37	88.61
	06/25/2014	<1.0	<1.0	<1.0	<1.0	6.61	90.37
	09/10/2014	<1.0	<1.0	<1.0	<1.0	6.91	90.07
	12/08/2014	<1.0	<1.0	<1.0	<1.0	7.83	89.15
MW06	09/20/2007	97	<1.0	5.6	32	7.00	89.64
	12/21/2007	36	<1.0	3.8	<1.0	10.28	86.36
	03/19/2008	1.4	<1.0	<1.0	<1.0	11.43	85.21
	06/13/2008	<1.0	<1.0	<1.0	<1.0	10.35	86.29
	09/16/2008	39	<1.0	<1.0	<1.0	6.37	90.27
	12/11/2008	19	<1.0	<1.0	<1.0	6.91	89.73
	03/03/2009	2.7	<1.0	<1.0	<1.0	8.12	88.52
	06/15/2009	14	<1.0	<1.0	<1.0	5.46	91.18
	09/28/2009	6.7	<1.0	<1.0	<1.0	6.48	90.16
	12/15/2009	2.8	<1.0	<1.0	<1.0	6.70	89.94
	03/09/2010	3.6	<1.0	<1.0	<1.0	7.62	89.02
	06/17/2010	4.3	<1.0	<1.0	<1.0	4.75	91.89
	09/13/2010	1.1	<1.0	<1.0	<1.0	6.38	90.26
	12/15/2010	<1.0	<1.0	<1.0	<1.0	8.12	88.52
	03/22/2011	<1.0	<1.0	<1.0	<1.0	8.82	87.82
	06/21/2011	<1.0	<1.0	<1.0	<1.0	5.81	90.83
	09/07/2011	2.6	<1.0	<1.0	<1.0	6.46	90.18
	12/21/2011	<1.0	<1.0	<1.0	<1.0	7.11	89.53
	03/14/2012	<1.0	<1.0	<1.0	<1.0	7.25	89.39
	06/18/2012	<1.0	<1.0	<1.0	<1.0	7.11	89.53
	09/17/2012	<1.0	<1.0	<1.0	<1.0	8.31	88.33
	12/27/2012	<1.0	<1.0	<1.0	<1.0	8.96	87.68
	03/26/2013	<1.0	<1.0	<1.0	<1.0	9.28	87.36
	06/20/2013	<1.0	<1.0	<1.0	<1.0	6.09	90.55



**TABLE 1 (Continued)**  
**GROUNDWATER ANALYTICAL AND FIELD RESULTS**  
**HSR-EACHUS 3, 4, 5-23**  
**WELD COUNTY, COLORADO**  
**KERR-MCGEE OIL & GAS ONSHORE LP**

Well Name	Date	Benzene (ug/L)	Toluene (ug/L)	Ethylbenzene (ug/L)	Xylenes (ug/L)	Depth Water/ (Product Thickness) (ft bgs)	Relative GW Elev. (ft)
MW06	08/28/2013	Removed from monitoring				NM	NA
	11/04/2013	Survey - Not Sampled				7.14	90.16
MW07	12/21/2007	<1.0	<1.0	<1.0	<1.0	11.08	86.09
	03/19/2008	<1.0	<1.0	<1.0	<1.0	11.13	86.04
	06/13/2008	<1.0	<1.0	<1.0	<1.0	10.80	86.37
	09/16/2008	<1.0	<1.0	<1.0	<1.0	6.83	90.34
	12/11/2008	<1.0	<1.0	<1.0	<1.0	7.36	89.81
	03/03/2009	<1.0	<1.0	<1.0	<1.0	8.69	88.48
	06/15/2009	<1.0	<1.0	<1.0	<1.0	5.61	91.56
	09/28/2009	<1.0	<1.0	<1.0	<1.0	7.20	89.97
	12/15/2009	<1.0	<1.0	<1.0	<1.0	7.56	89.61
	03/09/2010	<1.0	<1.0	<1.0	<1.0	8.27	88.90
	06/17/2010	<1.0	<1.0	<1.0	<1.0	4.80	92.37
	09/13/2010	<1.0	<1.0	<1.0	<1.0	6.96	90.21
	12/15/2010	<1.0	<1.0	<1.0	<1.0	8.48	88.69
	03/22/2011	<1.0	<1.0	<1.0	<1.0	9.46	87.71
	06/21/2011	<1.0	<1.0	<1.0	<1.0	6.20	90.97
	09/07/2011	Removed from monitoring				NM	NA
	11/04/2013	Survey - Not Sampled				7.02	90.14
MW08	12/21/2007	<1.0	<1.0	<1.0	<1.0	9.08	87.52
	03/19/2008	<1.0	<1.0	<1.0	<1.0	11.15	85.45
	06/13/2008	<1.0	<1.0	<1.0	<1.0	10.35	86.25
	09/16/2008	<1.0	<1.0	<1.0	<1.0	7.35	89.25
	12/11/2008	<1.0	<1.0	<1.0	<1.0	7.91	88.69
	03/03/2009	<b>12</b>	<1.0	<1.0	<1.0	8.96	87.64
	06/15/2009	<b>21</b>	<1.0	<1.0	<1.0	6.20	90.40
	09/28/2009	3.7	<1.0	<1.0	<1.0	7.02	89.58
	12/15/2009	1.3	<1.0	<1.0	<1.0	7.02	89.58
	03/09/2010	1.9	<1.0	<1.0	<1.0	7.98	88.62
	06/17/2010	<1.0	<1.0	<1.0	<1.0	5.26	91.34
	09/13/2010	<1.0	<1.0	<1.0	<1.0	6.49	90.11
	12/15/2010	<1.0	<1.0	<1.0	<1.0	8.25	88.35
	03/22/2011	<1.0	<1.0	<1.0	<1.0	8.93	87.67
	06/21/2011	<1.0	<1.0	<1.0	<1.0	6.43	90.17





**TABLE 1 (Continued)**  
**GROUNDWATER ANALYTICAL AND FIELD RESULTS**  
**HSR-EACHUS 3, 4, 5-23**  
**WELD COUNTY, COLORADO**  
**KERR-MCGEE OIL & GAS ONSHORE LP**

Well Name	Date	Benzene (ug/L)	Toluene (ug/L)	Ethylbenzene (ug/L)	Xylenes (ug/L)	Depth Water/ (Product Thickness) (ft bgs)	Relative GW Elev. (ft)
MW08	09/07/2011	<1.0	<1.0	9.7	<1.0	6.92	89.68
	12/21/2011	<1.0	<1.0	<1.0	<1.0	7.31	89.29
	03/14/2012	1.0	<1.0	<1.0	<1.0	7.51	89.09
	06/18/2012	<1.0	<1.0	<1.0	<1.0	7.44	89.16
	09/17/2012	<1.0	<1.0	<1.0	<1.0	8.35	88.25
	12/27/2012	<1.0	<1.0	<1.0	<1.0	9.40	87.20
	03/26/2013	<1.0	<1.0	<1.0	<1.0	8.66	87.94
	06/20/2013	<1.0	<1.0	<1.0	<1.0	6.61	89.99
	09/25/2013	<1.0	<1.0	<1.0	<1.0	7.00	89.60
	11/04/2013	Survey - Not Sampled				7.34	89.48
	12/12/2013	<1.0	<1.0	<1.0	<3.0	7.64	88.96
	03/31/2014	<1.0	<1.0	<1.0	<3.0	8.55	88.27
	04/07/2014	Survey - Not Sampled				12.00	84.85
	06/25/2014	<1.0	<1.0	<1.0	<1.0	6.86	89.99
	09/10/2014	<1.0	<1.0	<1.0	<1.0	7.60	89.25
	12/08/2014	<1.0	<1.0	<1.0	<1.0	8.78	88.07
MW09	07/22/2008	<1.0	<1.0	<1.0	<1.0	15.25	77.06
	09/16/2008	330	140	15	260	8.80	83.64
	12/11/2008	53	<1.0	<1.0	<1.0	8.69	83.75
	03/03/2009	1200	<1.0	48	44	9.25	83.19
	06/15/2009	1100	<1.0	11	12	6.39	86.05
	09/28/2009	25	<1.0	<1.0	<1.0	7.52	84.92
	12/15/2009	3.2	<1.0	<1.0	<1.0	7.22	85.22
	03/09/2010	8.7	<1.0	<1.0	<1.0	7.59	84.85
	06/17/2010	2.0	<1.0	<1.0	<1.0	5.51	86.93
	09/13/2010	1.4	<1.0	<1.0	<1.0	5.95	86.49
	12/15/2010	1.1	<1.0	<1.0	<1.0	6.96	85.48
	03/22/2011	1.7	<1.0	<1.0	<1.0	7.23	85.21
	06/21/2011	<1.0	<1.0	<1.0	<1.0	4.49	87.95
	09/07/2011	<1.0	<1.0	<1.0	<1.0	4.50	87.94
	12/21/2011	<1.0	<1.0	<1.0	<1.0	4.58	87.86
	03/14/2012	<1.0	<1.0	<1.0	<1.0	4.82	87.62
	06/18/2012	<1.0	<1.0	<1.0	<1.0	4.79	87.65
	09/17/2012	<1.0	<1.0	<1.0	<1.0	7.46	86.38
	12/27/2012	2.0	<1.0	<1.0	<1.0	7.40	86.44



**TABLE 1 (Continued)**  
**GROUNDWATER ANALYTICAL AND FIELD RESULTS**  
**HSR-EACHUS 3, 4, 5-23**  
**WELD COUNTY, COLORADO**  
**KERR-MCGEE OIL & GAS ONSHORE LP**

Well Name	Date	Benzene (ug/L)	Toluene (ug/L)	Ethylbenzene (ug/L)	Xylenes (ug/L)	Depth Water/ (Product Thickness) (ft bgs)	Relative GW Elev. (ft)
MW09	03/26/2013	1.1	<1.0	<1.0	<1.0	6.45	87.09
	06/20/2013	1300	<1.0	<1.0	<1.0	5.95	87.89
	09/25/2013	3.0	<1.0	<1.0	<1.0	5.57	88.27
	11/04/2013	Survey - Not Sampled				6.03	87.79
	12/12/2013	<1.0	<1.0	<1.0	<3.0	6.21	87.63
	03/31/2014	<1.0	<1.0	<1.0	<3.0	4.48	89.34
	04/07/2014	Survey - Not Sampled				6.08	87.76
	06/25/2014	<1.0	<1.0	<1.0	<1.0	5.85	87.99
	09/10/2014	<1.0	<1.0	<1.0	<1.0	6.35	87.49
	12/08/2014	<1.0	<1.0	<1.0	<1.0	6.77	87.07
MW10	07/22/2008	Dry - Not Sampled				NM	NA
	09/16/2008	7.2	7.3	<1.0	7.6	11.70	NA
	12/11/2008	240	36	1.9	24	9.15	NA
	03/03/2009	2900	2000	730	6500	9.58	NA
	06/15/2009	440	17	<1.0	12	PVC Blocked	NA
	09/28/2009	1400	1.1	37	40	PVC Blocked	NA
	12/15/2009	270	<1.0	<1.0	<1.0	PVC Bent	NA
	03/09/2010	200	<1.0	1.1	<1.0	PVC Bent	NA
	06/17/2010	210	<1.0	1.6	<1.0	PVC Blocked	NA
	09/13/2010	130	<1.0	2.0	<1.0	PVC Bent	NA
	12/15/2010	210	<1.0	<1.0	<1.0	PVC Bent	NA
	03/22/2011	360	<1.0	<1.0	<1.0	PVC Bent	NA
	MW10 destroyed as of 6/21/2011						
MW10R	07/26/2011	<1.0	<1.0	<1.0	<1.0	8.99	87.15
	09/07/2011	<1.0	<1.0	<1.0	<1.0	6.11	89.93
	03/14/2012	<1.0	<1.0	<1.0	<1.0	4.42	94.32
	06/18/2012	Not Found - Not Sampled				NM	NA
	09/17/2012	1.9	<1.0	<1.0	<1.0	8.98	87.06
	12/27/2012	<1.0	<1.0	<1.0	<1.0	7.90	88.14
	03/26/2013	<1.0	<1.0	<1.0	<1.0	7.43	88.61
	06/20/2013	<1.0	<1.0	<1.0	<1.0	3.14	92.90
	09/25/2013	<1.0	<1.0	<1.0	<1.0	7.50	88.54
	11/04/2013	Survey - Not Sampled				6.43	89.63
	12/12/2013	<1.0	<1.0	<1.0	<3.0	6.56	92.28
	03/31/2014	<1.0	<1.0	<1.0	<3.0	3.67	92.39



**TABLE 1 (Continued)**  
**GROUNDWATER ANALYTICAL AND FIELD RESULTS**  
**HSR-EACHUS 3, 4, 5-23**  
**WELD COUNTY, COLORADO**  
**KERR-MCGEE OIL & GAS ONSHORE LP**

Well Name	Date	Benzene (ug/L)	Toluene (ug/L)	Ethylbenzene (ug/L)	Xylenes (ug/L)	Depth Water/ (Product Thickness) (ft bgs)	Relative GW Elev. (ft)
MW10R	04/07/2014	Survey - Not Sampled				10.55	85.56
	06/25/2014	<1.0	<1.0	<1.0	<1.0	6.28	89.83
	09/10/2014	<1.0	<1.0	<1.0	<1.0	6.55	89.56
	12/08/2014	<1.0	<1.0	<1.0	<1.0	7.18	88.93
MW11	12/11/2008	<1.0	<1.0	<1.0	<1.0	NM	NA
	03/03/2009	<1.0	<1.0	<1.0	<1.0	12.32	NA
	06/15/2009	<1.0	<1.0	<1.0	<1.0	7.90	NA
	09/28/2009	<1.0	<1.0	<1.0	<1.0	PVC Blocked	NA
	12/15/2009	Damaged - Not Sampled				Damaged	NA
MW11 destroyed as of 12/15/2009							
MW11R	06/17/2010	<1.0	<1.0	<1.0	<1.0	3.29	91.09
	09/13/2010	<1.0	<1.0	<1.0	<1.0	3.13	91.25
	12/15/2010	<1.0	<1.0	<1.0	<1.0	2.30	92.08
	03/22/2011	<1.0	<1.0	<1.0	<1.0	2.90	91.48
	06/21/2011	<1.0	<1.0	<1.0	<1.0	3.24	91.14
	09/07/2011	<1.0	<1.0	<1.0	<1.0	3.29	91.09
	12/21/2011	<1.0	<1.0	<1.0	<1.0	2.50	91.88
	03/14/2012	<1.0	<1.0	<1.0	<1.0	2.65	91.73
	06/18/2012	<1.0	<1.0	<1.0	<1.0	2.55	91.83
	09/17/2012	<1.0	<1.0	<1.0	<1.0	2.74	91.64
	12/27/2012	<1.0	<1.0	<1.0	<1.0	2.60	91.78
	03/26/2013	<1.0	<1.0	<1.0	<1.0	2.40	91.98
	06/20/2013	<1.0	<1.0	<1.0	<1.0	2.75	91.63
	09/25/2013	<1.0	<1.0	<1.0	<1.0	2.24	92.14
	11/04/2013	Survey - Not Sampled				2.44	92.08
	12/12/2013	1.0	<1.0	<1.0	<3.0	12.37	82.01
	03/31/2014	2.9	<1.0	<1.0	<3.0	0.35	94.17
	04/07/2014	Survey - Not Sampled				2.98	91.51
	06/25/2014	3.1	<1.0	<1.0	<1.0	3.24	91.25
	09/10/2014	2.5	<1.0	<1.0	<1.0	2.94	91.55
	12/08/2014	<1.0	<1.0	<1.0	<1.0	2.68	91.81
MW12	12/11/2008	110	59	2.9	100	NM	NA
	03/03/2009	3700	100	100	870	8.17	NA
	06/15/2009	660	1.0	4.4	53	5.26	NA
	09/28/2009	270	<1.0	4.0	5.4	6.93	NA



**TABLE 1 (Continued)**  
**GROUNDWATER ANALYTICAL AND FIELD RESULTS**  
**HSR-EACHUS 3, 4, 5-23**  
**WELD COUNTY, COLORADO**  
**KERR-MCGEE OIL & GAS ONSHORE LP**

Well Name	Date	Benzene (ug/L)	Toluene (ug/L)	Ethylbenzene (ug/L)	Xylenes (ug/L)	Depth Water/ (Product Thickness) (ft bgs)	Relative GW Elev. (ft)
MW12	12/15/2009	320	<1.0	10	4.4	6.71	NA
	03/09/2010	48	<1.0	1.0	<1.0	6.85	NA
	06/17/2010	290	<1.0	<1.0	<1.0	4.46	NA
	09/13/2010	480	<1.0	16	<1.0	5.71	NA
	12/15/2010	3.8	<1.0	<1.0	2.9	6.17	NA
	03/22/2011	<1.0	<1.0	<1.0	<1.0	6.67	NA
MW12 destroyed as of 6/21/2011							
MW12R	07/26/2011	150	4.8	<1.0	35	5.39	89.00
	09/07/2011	48	<1.0	<1.0	<1.0	5.68	88.56
	12/21/2011	<1.0	<1.0	<1.0	<1.0	6.00	88.24
	03/14/2012	<1.0	<1.0	<1.0	<1.0	6.23	88.01
	06/18/2012	13	<1.0	<1.0	<1.0	6.12	88.12
	09/17/2012	<1.0	<1.0	<1.0	<1.0	8.77	85.47
	12/27/2012	<1.0	<1.0	<1.0	<1.0	8.38	85.86
	03/26/2013	<1.0	<1.0	<1.0	<1.0	7.75	86.49
	06/20/2013	<1.0	<1.0	<1.0	<1.0	5.58	88.66
	09/25/2013	<1.0	<1.0	<1.0	<1.0	5.38	88.86
	11/04/2013	Survey - Not Sampled				5.74	88.58
	12/12/2013	<1.0	<1.0	<1.0	<3.0	5.82	88.42
	03/31/2014	<1.0	<1.0	<1.0	<3.0	2.82	91.50
	04/07/2014	Survey - Not Sampled				5.95	88.43
	06/25/2014	<1.0	<1.0	<1.0	<1.0	6.76	87.62
	09/10/2014	<1.0	<1.0	<1.0	<1.0	5.91	88.47
	12/08/2014	<1.0	<1.0	<1.0	<1.0	6.38	88.00
MW13	12/11/2008	1400	450	27	610	NM	NA
	03/03/2009	1700	<1.0	14	81	7.84	NA
	06/15/2009	2400	<1.0	1.2	4.8	5.50	NA
	09/28/2009	30	<1.0	<1.0	<1.0	6.99	NA
	12/15/2009	13	<1.0	<1.0	<1.0	6.51	NA
	03/09/2010	<1.0	<1.0	<1.0	<1.0	6.73	NA
	06/17/2010	960	<1.0	1.8	<1.0	4.08	NA
	09/13/2010	1.1	<1.0	<1.0	<1.0	PVC Bent	NA
	12/15/2010	1.0	<1.0	<1.0	<1.0	6.53	NA
	03/22/2011	<1.0	<1.0	<1.0	<1.0	6.76	NA
MW13 destroyed as of 6/21/2011							



**TABLE 1 (Continued)**  
**GROUNDWATER ANALYTICAL AND FIELD RESULTS**  
**HSR-EACHUS 3, 4, 5-23**  
**WELD COUNTY, COLORADO**  
**KERR-MCGEE OIL & GAS ONSHORE LP**

Well Name	Date	Benzene (ug/L)	Toluene (ug/L)	Ethylbenzene (ug/L)	Xylenes (ug/L)	Depth Water/ (Product Thickness) (ft bgs)	Relative GW Elev. (ft)
MW13R	07/26/2011	<1.0	<1.0	<1.0	<1.0	4.70	88.11
	09/07/2011	<1.0	<1.0	<1.0	<1.0	5.92	86.84
	12/21/2011	<1.0	<1.0	<1.0	<1.0	6.00	86.76
	03/14/2012	<1.0	<1.0	<1.0	<1.0	6.23	86.53
	06/18/2012	<1.0	<1.0	<1.0	<1.0	6.13	86.63
	09/17/2012	<1.0	<1.0	<1.0	<1.0	8.34	84.42
	12/27/2012	<1.0	<1.0	<1.0	<1.0	7.70	85.06
	06/20/2013	<1.0	<1.0	<1.0	<1.0	4.79	87.97
	08/28/2013	Removed from monitoring				NM	NA
	11/04/2013	Survey - Not Sampled				6.06	86.68
MW14	03/03/2009	Dry - Not Sampled				Dry	NA
	06/15/2009	<1.0	<1.0	<1.0	<1.0	14.77	78.01
	09/28/2009	<1.0	<1.0	<1.0	<1.0	7.53	85.25
	12/15/2009	<1.0	<1.0	<1.0	<1.0	7.75	85.03
	03/09/2010	<1.0	<1.0	<1.0	<1.0	7.88	84.90
	06/17/2010	<1.0	<1.0	<1.0	<1.0	4.02	88.76
	09/13/2010	<1.0	<1.0	<1.0	<1.0	5.83	86.95
	12/15/2010	<1.0	<1.0	<1.0	<1.0	6.47	86.31
	03/22/2011	<1.0	<1.0	<1.0	<1.0	6.87	85.91
	06/21/2011	<1.0	<1.0	<1.0	<1.0	5.49	87.29
	09/07/2011	<1.0	<1.0	<1.0	<1.0	5.44	87.34
	12/21/2011	<1.0	<1.0	<1.0	<1.0	5.60	87.18
	03/14/2012	<1.0	<1.0	<1.0	<1.0	5.70	87.08
	06/18/2012	<1.0	<1.0	<1.0	<1.0	5.56	87.22
	09/17/2012	<1.0	<1.0	<1.0	<1.0	7.32	85.46
	12/27/2012	<1.0	<1.0	<1.0	<1.0	8.95	83.83
	03/26/2013	<1.0	<1.0	<1.0	<1.0	8.23	84.55
	06/20/2013	<1.0	<1.0	<1.0	<1.0	10.42	82.36
	09/25/2013	<1.0	<1.0	<1.0	<1.0	8.85	83.93
	11/04/2013	Survey - Not Sampled				11.30	81.44
	12/12/2013	<1.0	<1.0	<1.0	<3.0	10.51	82.27
	03/31/2014	<1.0	<1.0	<1.0	<3.0	2.71	90.03
	04/07/2014	Survey - Not Sampled				6.12	86.76
	06/25/2014	<1.0	<1.0	<1.0	<1.0	5.95	86.93
	09/10/2014	<1.0	<1.0	<1.0	<1.0	6.51	86.37



**TABLE 1 (Continued)**  
**GROUNDWATER ANALYTICAL AND FIELD RESULTS**  
**HSR-EACHUS 3, 4, 5-23**  
**WELD COUNTY, COLORADO**  
**KERR-MCGEE OIL & GAS ONSHORE LP**

Well Name	Date	Benzene (ug/L)	Toluene (ug/L)	Ethylbenzene (ug/L)	Xylenes (ug/L)	Depth Water/ (Product Thickness) (ft bgs)	Relative GW Elev. (ft)
MW14	12/08/2014	<1.0	<1.0	<1.0	<1.0	7.32	85.56
MW15	03/03/2009	Dry - Not Sampled				Dry	NA
	06/15/2009	<1.0	<1.0	<1.0	<1.0	5.17	NA
	09/28/2009	<1.0	<1.0	<1.0	<1.0	6.70	NA
	12/15/2009	<1.0	<1.0	<1.0	<1.0	7.34	NA
	03/09/2010	<1.0	<1.0	<1.0	<1.0	7.16	NA
	06/17/2010	<1.0	<1.0	<1.0	<1.0	3.42	NA
	09/13/2010	<1.0	<1.0	<1.0	<1.0	5.75	NA
	12/15/2010	<1.0	<1.0	<1.0	<1.0	6.54	NA
	03/22/2011	<1.0	<1.0	<1.0	<1.0	6.91	NA
	06/21/2011	<1.0	<1.0	<1.0	<1.0	4.67	NA
	09/07/2011	<1.0	<1.0	<1.0	<1.0	5.21	NA
	12/21/2011	<1.0	<1.0	<1.0	<1.0	5.42	NA
	03/14/2012	<1.0	<1.0	<1.0	<1.0	5.55	NA
	06/18/2012	<1.0	<1.0	<1.0	<1.0	5.51	NA
	09/17/2012	<1.0	<1.0	<1.0	<1.0	7.65	NA
	12/27/2012	<1.0	<1.0	<1.0	<1.0	PVC Bent	NA
	03/26/2013	<1.0	<1.0	<1.0	<1.0	PVC Bent	NA
	06/20/2013	<1.0	<1.0	<1.0	<1.0	Damaged	NA
	08/28/2013	Removed from monitoring				NM	NA
MW16	12/20/2013	<4.0	<4.0	<4.0	<4.0	5.84	NA
	03/31/2014	<4.0	<4.0	<4.0	<12.0	5.31	NA
	04/07/2014	Survey - Not Sampled				5.48	87.11
	06/25/2014	<1.0	<1.0	<1.0	<1.0	5.14	87.45
	09/10/2014	<1.0	<1.0	<1.0	<1.0	6.02	86.57
	12/08/2014	<1.0	<1.0	<1.0	<1.0	6.82	85.77
<b>CGWQS</b>		<b>5</b>	<b>1000</b>	<b>700</b>	<b>1400</b>		

Notes: ug/L - micrograms per Liter  
ft bgs - feet below ground surface  
GW - Groundwater

Elev. - Elevation  
Bold numbers indicate result exceeded standard.  
< - less than

NA - Not Analyzed/Not Available  
NM - Not Measured  
CGWQS - Colorado Groundwater  
Quality Standards

Results in red indicate data from samples collected after completion of carbon slurry injection.

