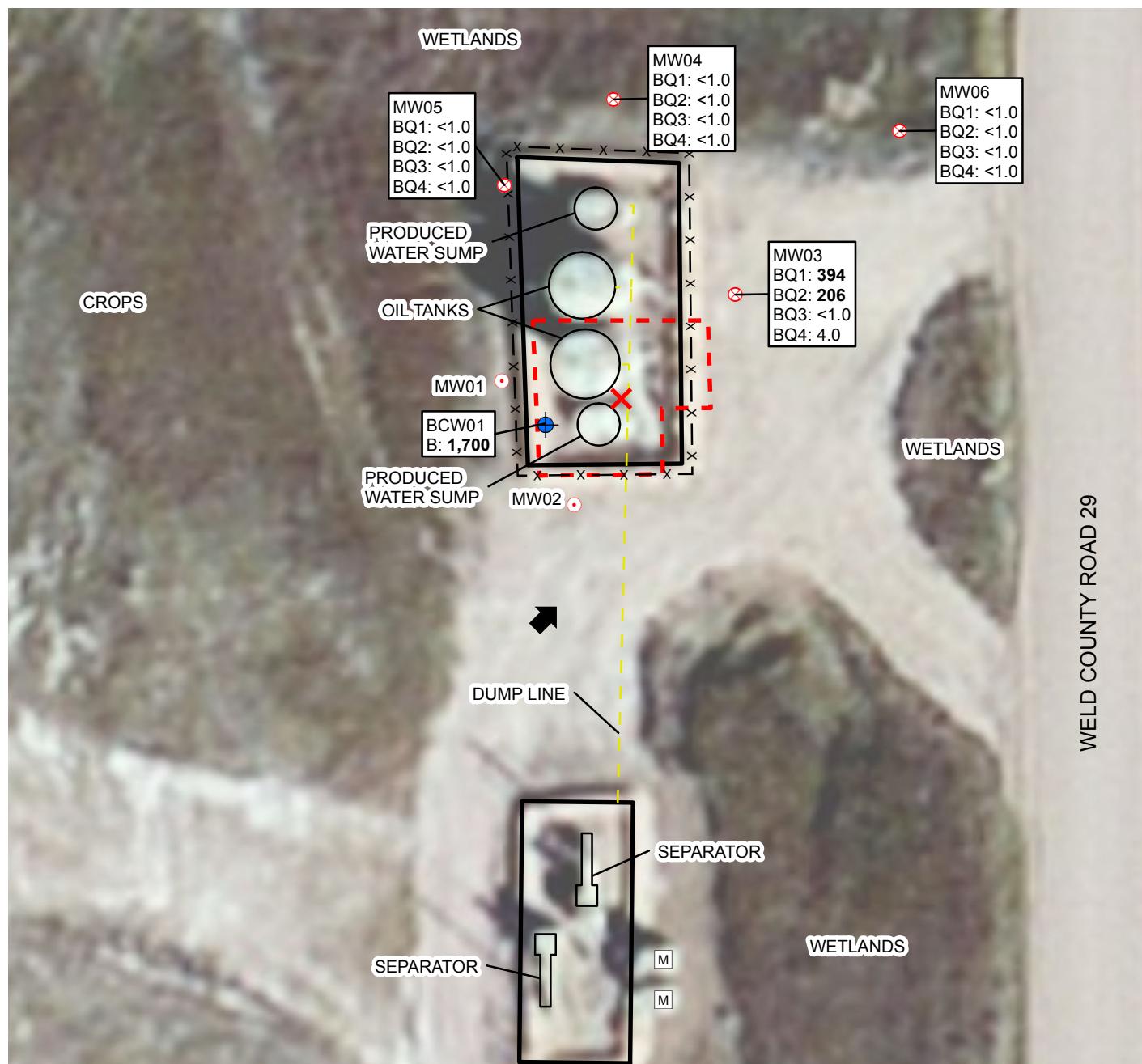


2014 ANNUAL PROJECT SUMMARY TABLE

Incident Date	Remediation No.	Well Name	API	Status	NFA Submitted	NFA Approved Date	Site Summary (monitoring/remediation/ wells installed or destroyed)	Wells Sampled (Last Quarter) 2014	Wells Exceeding 5 ug/L Benzene (Last Quarter Sampled 2014)	Benzene Range (ug/L) (Last Quarter 2014)	POC Established	2015 Recommendations	Well Reduction Request
8/2/2005	3562	HSR-Blank 15-5/ HSR-Cabral 16-5	05-123-16635	Assessment	NO	NA	Quarterly groundwater monitoring since September 2005. MW01 was removed from monitoring in 2009. Carbon slurry (BOS 200) injection completed in June 2010. MW02 was removed from monitoring in 2011. MW06 was installed March 2014.	MW03-MW06	None	ND - 4.0	YES	Quarterly groundwater monitoring will continue.	NA

Notes:
NA - Not Applicable
ND - Non-Detect
NFA - No Further Action
POC - Point of Compliance



LEGEND

- ✕ RELEASE
- ⊗ MONITORING WELL
- ⊙ REMOVED FROM MONITORING PROGRAM
- ⊕ GROUNDWATER SAMPLE
- M METER HOUSE
- ↑ SURVEYED GROUNDWATER FLOW DIRECTION
- x — x FENCE
- - - DUMP LINE
- EXCAVATION EXTENT
- BERM

GROUNDWATER SAMPLE ID
 B: BENZENE CONCENTRATION
 Q1-Q4: FIRST-FOURTH QUARTER 2014
 ALL RESULTS IN MICROGRAMS PER LITER
BOLD INDICATES RESULT ABOVE STANDARD
<: LESS THAN LABORATORY REPORTING LIMIT

IMAGE COURTESY OF ESRI

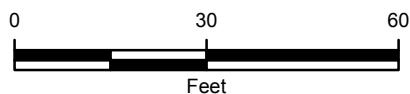


FIGURE 1
SITE MAP
 HSR-BLANK 15-5/HSR-CABRAL 16-5
 SWSE SEC 5-T3N-R66W
 WELD COUNTY, COLORADO
KERR-MCGEE OIL & GAS ONSHORE LP



TABLE 1
GROUNDWATER ANALYTICAL AND FIELD RESULTS
HSR-BLANK 15-5/ HSR-CABRAL 16-5
WELD COUNTY, COLORADO
KERR-MCGEE OIL & GAS ONSHORE LP

Well Name	Date	Benzene (ug/L)	Toluene (ug/L)	Ethylbenzene (ug/L)	Xylenes (ug/L)	Depth Water/ (Product Thickness) (ft bgs)	Relative GW Elev. (ft)
BCW01	08/04/2005	1700	4000	500	10800	NM	NA
MW01	09/29/2005	<1.0	<1.0	<1.0	<2.0	1.05	NA
	12/13/2005	<1.0	<1.0	<1.0	<2.0	1.05	NA
	03/28/2006	<1.0	<1.0	<1.0	<1.0	1.00	NA
	06/16/2006	<1.0	<1.0	<1.0	<1.0	2.36	NA
	09/21/2006	<1.0	<1.0	<1.0	<1.0	1.55	NA
	12/27/2006	<1.0	<1.0	<1.0	<1.0	0.55	NA
	03/12/2007	<1.0	<1.0	<1.0	<1.0	0.45	NA
	06/14/2007	<1.0	<1.0	<1.0	<1.0	1.50	NA
	09/11/2007	<1.0	<1.0	<1.0	<1.0	1.80	NA
	12/10/2007	<1.0	<1.0	<1.0	<1.0	0.15	NA
	03/06/2008	<1.0	<1.0	<1.0	<1.0	1.08	NA
	06/10/2008	<1.0	<1.0	<1.0	<1.0	1.54	NA
	09/15/2008	<1.0	<1.0	<1.0	<1.0	0.70	NA
	12/11/2008	<1.0	<1.0	<1.0	<1.0	0.69	NA
	03/04/2009	<1.0	<1.0	<1.0	<1.0	1.30	NA
	06/01/2009	<1.0	<1.0	<1.0	<1.0	1.23	NA
	09/21/2009	Removed from monitoring				NM	NA
MW02	09/29/2005	40	<1.0	270	330	2.10	95.90
	12/13/2005	<1.0	<1.0	<1.0	<2.0	1.60	96.40
	03/28/2006	<1.0	<1.0	<1.0	<1.0	1.58	96.42
	06/16/2006	2.3	<1.0	<1.0	<1.0	2.90	95.10
	09/21/2006	<1.0	<1.0	<1.0	<1.0	2.06	95.94
	12/27/2006	<1.0	<1.0	<1.0	<1.0	1.06	96.94
	03/12/2007	<1.0	<1.0	<1.0	<1.0	0.98	97.02
	06/14/2007	1.1	<1.0	1.5	<1.0	2.20	95.80
	09/11/2007	<1.0	<1.0	<1.0	<1.0	2.20	95.30
	12/10/2007	<1.0	<1.0	<1.0	<1.0	0.00	98.00
	03/06/2008	<1.0	<1.0	<1.0	<1.0	1.70	96.30
	06/10/2008	<1.0	<1.0	<1.0	<1.0	2.16	95.84
	09/15/2008	<1.0	<1.0	<1.0	<1.0	1.21	96.79
	12/11/2008	<1.0	<1.0	<1.0	<1.0	1.23	96.77
	03/04/2009	<1.0	<1.0	<1.0	<1.0	1.75	96.25
	06/01/2009	<1.0	<1.0	<1.0	<1.0	1.94	96.06



TABLE 1 (Continued)
GROUNDWATER ANALYTICAL AND FIELD RESULTS
HSR-BLANK 15-5/ HSR-CABRAL 16-5
WELD COUNTY, COLORADO
KERR-MCGEE OIL & GAS ONSHORE LP

Well Name	Date	Benzene (ug/L)	Toluene (ug/L)	Ethylbenzene (ug/L)	Xylenes (ug/L)	Depth Water/ (Product Thickness) (ft bgs)	Relative GW Elev. (ft)
MW02	09/21/2009	<1.0	<1.0	<1.0	<1.0	1.90	96.10
	12/04/2009	<1.0	<1.0	<1.0	<1.0	0.94	97.06
	03/04/2010	<1.0	<1.0	<1.0	<1.0	0.96	97.04
	06/09/2010	<1.0	<1.0	<1.0	<1.0	2.39	95.61
	09/13/2010	1.5	<1.0	<1.0	<1.0	3.10	94.90
	12/07/2010	<1.0	<1.0	<1.0	<1.0	1.97	96.03
	03/01/2011	<1.0	<1.0	<1.0	<1.0	1.74	96.26
	06/24/2011	Removed from monitoring				NM	NA
	12/06/2013	Surveyed - Not Sampled				1.80	96.19
MW03	09/29/2005	260	<1.0	94	960	2.30	94.63
	12/13/2005	64	<1.0	6.0	220	1.90	95.13
	03/28/2006	70	<1.0	<1.0	59	1.90	95.13
	06/16/2006	16	<1.0	<1.0	3.6	3.56	93.47
	09/21/2006	2.4	<1.0	<1.0	<1.0	2.49	94.54
	12/27/2006	30	<1.0	1.1	5.8	1.49	95.54
	03/12/2007	610	<1.0	<1.0	22	1.60	95.43
	04/10/2007	410	<1.0	<1.0	5.4	1.83	95.20
	06/14/2007	120	<1.0	<1.0	<1.0	3.00	94.03
	09/11/2007	190	<1.0	8.7	36	3.10	93.93
	12/10/2007	5.1	<1.0	<1.0	<1.0	1.00	96.03
	03/06/2008	<1.0	<1.0	3.8	160	2.49	94.54
	06/10/2008	160	<1.0	<1.0	<1.0	2.85	94.18
	09/15/2008	310	<1.0	<1.0	200	2.53	94.50
	12/11/2008	16	<1.0	12	<1.0	2.39	94.64
	03/04/2009	<1.0	<1.0	<1.0	<1.0	2.51	94.52
	06/01/2009	230	<1.0	4.4	30	2.96	94.07
	09/21/2009	<1.0	<1.0	<1.0	<1.0	2.95	94.08
	12/04/2009	28	<1.0	<1.0	<1.0	2.48	94.55
	03/04/2010	180	<1.0	<1.0	<1.0	2.08	94.95
	06/09/2010	340	<1.0	5.7	2.0	3.33	93.70
	09/13/2010	89	<1.0	1.6	21	3.52	93.51
	12/07/2010	<1.0	<1.0	<1.0	<1.0	1.36	95.67
	03/01/2011	<1.0	<1.0	<1.0	<1.0	1.35	95.68
	06/24/2011	<1.0	<1.0	<1.0	<1.0	3.47	93.56
	09/09/2011	75	<1.0	<1.0	<1.0	3.49	93.54



TABLE 1 (Continued)
GROUNDWATER ANALYTICAL AND FIELD RESULTS
HSR-BLANK 15-5/ HSR-CABRAL 16-5
WELD COUNTY, COLORADO
KERR-MCGEE OIL & GAS ONSHORE LP

Well Name	Date	Benzene (ug/L)	Toluene (ug/L)	Ethylbenzene (ug/L)	Xylenes (ug/L)	Depth Water/ (Product Thickness) (ft bgs)	Relative GW Elev. (ft)
MW03	12/13/2011	<1.0	<1.0	<1.0	<1.0	PVC Bent	NA
	03/05/2012	240	<1.0	<1.0	49	PVC Bent	NA
	06/07/2012	16	<1.0	<1.0	2.1	PVC Bent	NA
	09/13/2012	72	<1.0	<1.0	21	PVC Bent	NA
	12/11/2012	15	<1.0	<1.0	13	PVC Bent	NA
	03/12/2013	260	<1.0	3.1	15	PVC Bent	NA
	06/19/2013	<1.0	<1.0	<1.0	<1.0	PVC Bent	NA
	09/17/2013	20	<1.0	<1.0	12	0.19	97.93
	12/06/2013					2.34	NA
	12/12/2013	<4.0	<4.0	<4.0	<4.0	PVC Bent	NA
	03/11/2014	394	<1.0	<1.0	<1.0	PVC Bent	NA
	06/06/2014	206	<1.0	<1.0	7.5	PVC Bent	NA
	09/17/2014	<1.0	<1.0	<1.0	<1.0	PVC Bent	NA
	12/01/2014	4.0	<1.0	<1.0	<1.0	PVC Bent	NA
MW04	04/24/2006	<1.0	<1.0	<1.0	<1.0	2.50	94.83
	06/16/2006	<1.0	<1.0	<1.0	<1.0	2.80	94.53
	09/21/2006	<1.0	<1.0	<1.0	<1.0	2.00	95.33
	12/27/2006	<1.0	<1.0	<1.0	<1.0	1.00	96.33
	03/12/2007	<1.0	<1.0	<1.0	<1.0	1.05	96.28
	06/14/2007	<1.0	<1.0	<1.0	<1.0	2.00	95.33
	09/11/2007	<1.0	<1.0	<1.0	<1.0	2.18	95.15
	12/10/2007	<1.0	<1.0	<1.0	<1.0	1.38	95.95
	03/06/2008	<1.0	<1.0	<1.0	<1.0	1.35	95.98
	06/10/2008	<1.0	<1.0	<1.0	<1.0	1.81	95.52
	09/15/2008	<1.0	<1.0	<1.0	<1.0	1.08	96.25
	12/11/2008	<1.0	<1.0	<1.0	<1.0	1.16	96.17
	03/04/2009	<1.0	<1.0	<1.0	<1.0	1.54	95.79
	06/01/2009	<1.0	<1.0	<1.0	<1.0	1.70	95.63
	09/21/2009	<1.0	<1.0	<1.0	<1.0	1.86	95.47
	12/04/2009	<1.0	<1.0	<1.0	<1.0	2.21	95.12
	03/04/2010	<1.0	<1.0	<1.0	<1.0	1.02	96.31
	06/09/2010	<1.0	<1.0	<1.0	<1.0	2.37	94.96
	09/13/2010	<1.0	<1.0	<1.0	<1.0	3.05	94.28
	12/07/2010	<1.0	<1.0	<1.0	<1.0	1.86	95.47
	03/01/2011	<1.0	<1.0	<1.0	<1.0	1.71	95.62



TABLE 1 (Continued)
GROUNDWATER ANALYTICAL AND FIELD RESULTS
HSR-BLANK 15-5/ HSR-CABRAL 16-5
WELD COUNTY, COLORADO
KERR-MCGEE OIL & GAS ONSHORE LP

Well Name	Date	Benzene (ug/L)	Toluene (ug/L)	Ethylbenzene (ug/L)	Xylenes (ug/L)	Depth Water/ (Product Thickness) (ft bgs)	Relative GW Elev. (ft)
MW04	06/24/2011	<1.0	<1.0	<1.0	<1.0	2.65	94.68
	09/09/2011	<1.0	<1.0	<1.0	<1.0	2.64	94.69
	12/13/2011	<1.0	<1.0	<1.0	<1.0	1.68	95.65
	03/05/2012	<1.0	<1.0	<1.0	<1.0	1.67	95.66
	06/07/2012	<1.0	<1.0	<1.0	<1.0	2.05	95.28
	09/13/2012	Dry - Not Sampled				Dry	NA
	12/11/2012	<1.0	<1.0	<1.0	<1.0	2.28	95.05
	03/12/2013	<1.0	<1.0	<1.0	<1.0	1.61	95.72
	06/19/2013	<1.0	<1.0	<1.0	<1.0	2.96	94.37
	09/17/2013	<1.0	<1.0	<1.0	<1.0	1.18	96.15
	12/06/2013	Surveyed - Not Sampled				1.67	95.49
	12/12/2013	<4.0	<4.0	<4.0	<4.0	1.81	95.52
	03/11/2014	<1.0	<1.0	<1.0	<1.0	1.45	95.88
	06/06/2014	<1.0	<1.0	<1.0	<1.0	1.91	95.25
	09/17/2014	<1.0	<1.0	<1.0	<1.0	2.06	95.10
	12/01/2014	<1.0	<1.0	<1.0	<1.0	1.77	95.39
MW05	04/24/2006	<1.0	<1.0	<1.0	<1.0	0.75	96.30
	06/16/2006	<1.0	<1.0	<1.0	<1.0	1.90	95.15
	09/21/2006	<1.0	<1.0	<1.0	<1.0	1.15	95.90
	12/27/2006	<1.0	<1.0	<1.0	<1.0	0.15	96.90
	03/12/2007	<1.0	<1.0	<1.0	<1.0	0.42	96.63
	06/14/2007	<1.0	<1.0	<1.0	<1.0	1.93	95.12
	09/11/2007	<1.0	<1.0	<1.0	<1.0	1.24	95.81
	12/10/2007	<1.0	<1.0	<1.0	<1.0	0.04	97.01
	03/06/2008	<1.0	<1.0	<1.0	<1.0	0.52	96.53
	06/10/2008	<1.0	<1.0	<1.0	<1.0	0.98	96.07
	09/15/2008	<1.0	<1.0	<1.0	<1.0	0.60	96.45
	12/11/2008	<1.0	<1.0	<1.0	<1.0	0.62	96.43
	03/04/2009	<1.0	<1.0	<1.0	<1.0	0.90	96.15
	06/01/2009	<1.0	<1.0	<1.0	<1.0	1.04	96.01
	09/21/2009	<1.0	2.2	<1.0	<1.0	1.03	96.02
	12/04/2009	<1.0	<1.0	<1.0	<1.0	1.42	95.63
	03/04/2010	<1.0	<1.0	<1.0	<1.0	0.59	96.46
	06/09/2010	<1.0	<1.0	<1.0	<1.0	1.69	95.36
	09/13/2010	<1.0	<1.0	<1.0	<1.0	2.42	94.63



TABLE 1 (Continued)
GROUNDWATER ANALYTICAL AND FIELD RESULTS
HSR-BLANK 15-5/ HSR-CABRAL 16-5
WELD COUNTY, COLORADO
KERR-MCGEE OIL & GAS ONSHORE LP

Well Name	Date	Benzene (ug/L)	Toluene (ug/L)	Ethylbenzene (ug/L)	Xylenes (ug/L)	Depth Water/ (Product Thickness) (ft bgs)	Relative GW Elev. (ft)
MW05	12/07/2010	<1.0	<1.0	<1.0	<1.0	0.31	96.74
	03/01/2011	<1.0	<1.0	<1.0	<1.0	PVC Blocked	NA
	06/24/2011	<1.0	<1.0	<1.0	<1.0	2.20	94.85
	09/09/2011	<1.0	<1.0	<1.0	<1.0	2.19	94.86
	12/13/2011	<1.0	<1.0	<1.0	<1.0	1.31	95.74
	03/05/2012	<1.0	<1.0	<1.0	<1.0	1.09	95.96
	06/07/2012	<1.0	<1.0	<1.0	<1.0	1.18	95.87
	09/13/2012	<1.0	<1.0	<1.0	<1.0	3.85	93.20
	12/11/2012	<1.0	<1.0	<1.0	<1.0	1.65	95.40
	03/12/2013	<1.0	<1.0	<1.0	<1.0	1.00	96.05
	06/19/2013	<1.0	<1.0	<1.0	<1.0	2.51	94.54
	09/17/2013	<1.0	<1.0	<1.0	<1.0	1.00	96.05
	12/06/2013	Surveyed - Not Sampled				0.71	95.76
	12/12/2013	<4.0	<4.0	<4.0	<4.0	1.34	95.71
	03/11/2014	<1.0	<1.0	<1.0	<1.0	0.00	97.05
	06/06/2014	<1.0	<1.0	<1.0	<1.0	1.02	95.45
	09/17/2014	<1.0	<1.0	<1.0	<1.0	1.11	95.36
	12/01/2014	<1.0	<1.0	<1.0	<1.0	0.58	95.89
MW06	03/24/2014	<1.0	<1.0	<1.0	<1.0	1.61	NA
	06/06/2014	<1.0	<1.0	<1.0	<1.0	3.74	NA
	09/17/2014	<1.0	<1.0	<1.0	<1.0	3.90	NA
	12/01/2014	<1.0	<1.0	<1.0	<1.0	3.55	NA
CGWQS		5	1000	700	1400		

Notes: ug/L - micrograms per Liter
ft bgs - feet below ground surface
GW - Groundwater

Elev. - Elevation
Bold numbers indicate result exceeded standard.
< - less than

NA - Not Analyzed/Not Available
NM - Not Measured
CGWQS - Colorado Groundwater
Quality Standards

Results in red indicate data from samples collected after completion of carbon slurry injection.

