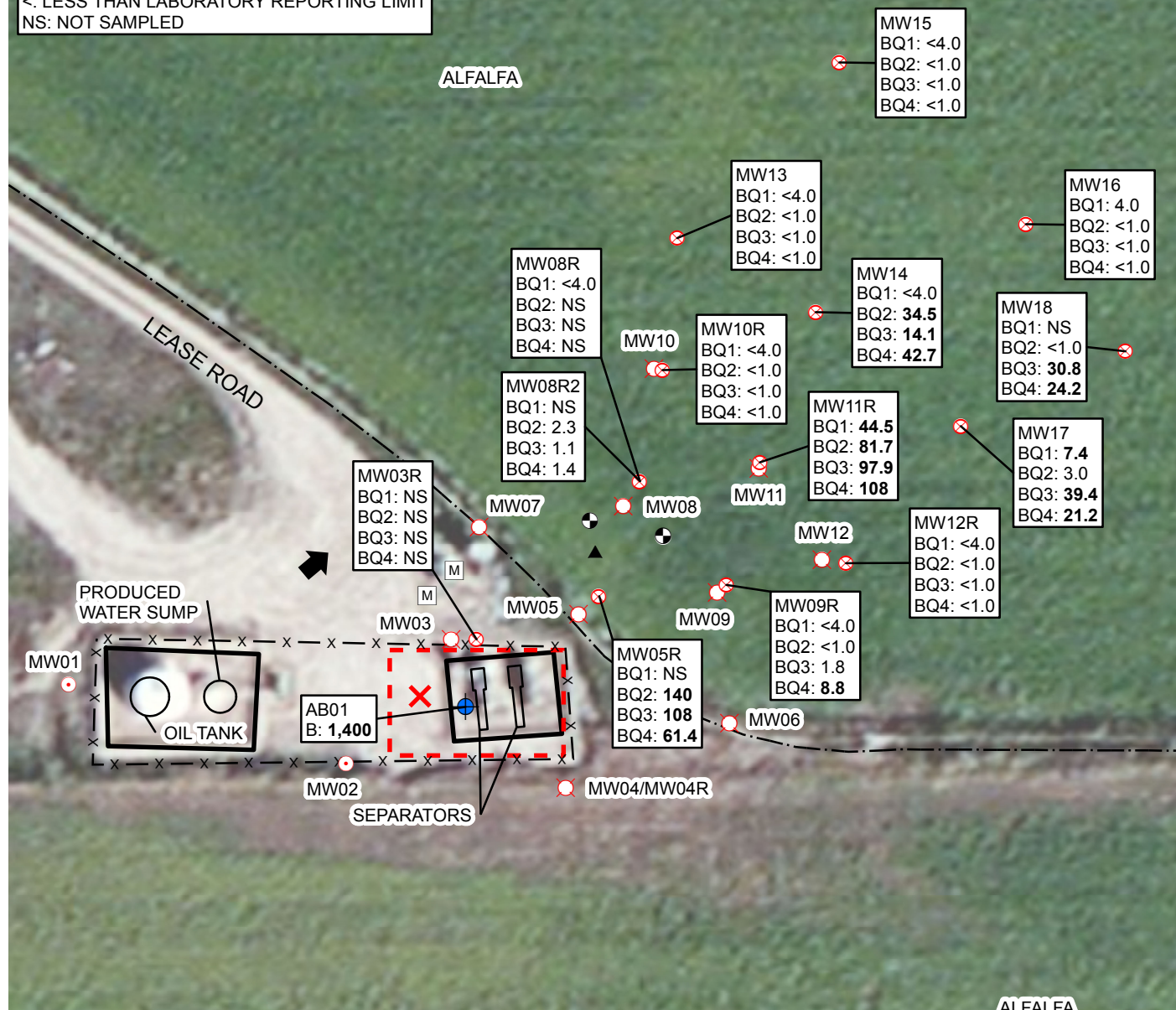


2014 ANNUAL PROJECT SUMMARY TABLE

Incident Date	Remediation No.	Well Name	API	Status	NFA Submitted	NFA Approved Date	Site Summary (monitoring/remediation/ wells installed or destroyed)	Wells Sampled (Last Quarter) 2014	Wells Exceeding 5 ug/L Benzene (Last Quarter Sampled 2014)	Benzene Range (ug/L) (Last Quarter 2014)	POC Established	2015 Recommendations	Well Reduction Request
8/3/2005	3559	Anderson 12-27/ Bohlender 1-27	05-123-17900	Remediation	NO	NA	Quarterly groundwater monitoring since September 2005. MW01 and MW02 were removed from monitoring in 2009. MW05R, MW08R2, and MW18 installed in May 2014. AS/SVE pilot test conducted in June 2014.	MW05R, MW08R2-MW18	MW05R, MW09R, MW11R, MW14, MW17, MW18	ND - 108	NO	Additional monitoring wells will be installed down-gradient of MW17 and MW18 to re-establish POC. Remedial options are being evaluated and will be implemented in 2015. Quarterly groundwater monitoring will continue.	NA

Notes:
NA - Not Applicable
ND - Non-Detect
NFA - No Further Action
POC - Point of Compliance

GROUNDWATER SAMPLE ID
 B: BENZENE CONCENTRATION
 Q1-Q4: FIRST-FOURTH QUARTER 2014
 ALL RESULTS IN MICROGRAMS PER LITER
BOLD INDICATES RESULT ABOVE STANDARD
 <: LESS THAN LABORATORY REPORTING LIMIT
 NS: NOT SAMPLED



LEGEND

✗ RELEASE

▲ AIR SPARGING WELL

⊗ MONITORING WELL

⊙ OBSERVATION WELL

⊗ DESTROYED MONITORING WELL

○ REMOVED FROM MONITORING PROGRAM

⊕ GROUNDWATER SAMPLE

[M] METER HOUSE

↑ SURVEYED GROUNDWATER FLOW DIRECTION

x — x FENCE

- - - IRRIGATION DITCH (CONCRETE)

[] EXCAVATION EXTENT

[] BERM

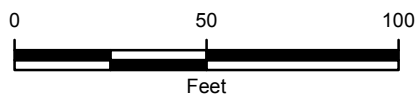


IMAGE COURTESY OF ESRI

FIGURE 1
 SITE MAP
 ANDERSON 12-27/BOHLENDER 1-27
 SWNW SEC 27-T4N-R65W
 WELD COUNTY, COLORADO
 KERR-MCGEE OIL & GAS ONSHORE LP



TABLE 1
GROUNDWATER ANALYTICAL AND FIELD RESULTS
ANDERSON 12-27/ BOHLENDER 1-27
WELD COUNTY, COLORADO
KERR-MCGEE OIL & GAS ONSHORE LP

Well Name	Date	Benzene (ug/L)	Toluene (ug/L)	Ethylbenzene (ug/L)	Xylenes (ug/L)	Depth Water/ (Product Thickness) (ft bgs)	Relative GW Elev. (ft)
AB01	08/10/2005	1400	<1.0	840	15000	NM	NA
AS01	06/09/2014	Not Sampled				28.13	NA
MW01	09/29/2005	1.2	<1.0	1.0	15	7.90	NA
	12/13/2005	Dry - Not Sampled				14.21	NA
	03/21/2006	Dry - Not Sampled				Dry	NA
	06/28/2006	Dry - Not Sampled				Dry	NA
	09/30/2006	<1.0	<1.0	<1.0	<1.0	10.93	NA
	12/05/2006	Dry - Not Sampled				Dry	NA
	03/05/2007	Dry - Not Sampled				17.90	NA
	06/04/2007	<1.0	<1.0	<1.0	<1.0	7.34	NA
	09/11/2007	<1.0	<1.0	<1.0	<1.0	3.20	NA
	12/07/2007	<1.0	<1.0	<1.0	<1.0	10.65	NA
	03/06/2008	Insufficient Water - Not Sampled				17.25	NA
	06/10/2008	<1.0	<1.0	<1.0	<1.0	7.60	NA
	09/04/2008	<1.0	<1.0	<1.0	<1.0	4.37	NA
	12/17/2008	<1.0	<1.0	<1.0	<1.0	NM	NA
	03/09/2009	<1.0	<1.0	<1.0	<1.0	16.66	NA
	06/24/2009	<1.0	<1.0	<1.0	<1.0	9.78	NA
	09/10/2009	Removed from monitoring				NM	NA
MW02	09/29/2005	<1.0	<1.0	<1.0	<2.0	10.70	NA
	12/13/2005	Dry - Not Sampled				19.00	NA
	03/21/2006	Dry - Not Sampled				Dry	NA
	06/28/2006	Dry - Not Sampled				Dry	NA
	09/30/2006	<1.0	<1.0	<1.0	<1.0	15.46	NA
	12/05/2006	Dry - Not Sampled				Dry	NA
	03/05/2007	Dry - Not Sampled				Dry	NA
	06/04/2007	<1.0	<1.0	<1.0	<1.0	12.90	NA
	09/11/2007	<1.0	<1.0	<1.0	<1.0	7.60	NA
	12/07/2007	<1.0	<1.0	<1.0	<1.0	15.19	NA
	03/06/2008	Dry - Not Sampled				Dry	NA
	06/10/2008	<1.0	<1.0	<1.0	<1.0	12.75	NA
	09/04/2008	<1.0	<1.0	<1.0	<1.0	9.70	NA
	12/17/2008	<1.0	<1.0	<1.0	<1.0	NM	NA
	03/09/2009	Dry - Not Sampled				Dry	NA



TABLE 1 (Continued)
GROUNDWATER ANALYTICAL AND FIELD RESULTS
ANDERSON 12-27/ BOHLENDER 1-27
WELD COUNTY, COLORADO
KERR-MCGEE OIL & GAS ONSHORE LP

Well Name	Date	Benzene (ug/L)	Toluene (ug/L)	Ethylbenzene (ug/L)	Xylenes (ug/L)	Depth Water/ (Product Thickness) (ft bgs)	Relative GW Elev. (ft)
MW02	06/24/2009	<1.0	<1.0	<1.0	<1.0	14.48	NA
	09/10/2009	Removed from monitoring				NM	NA
MW03	09/29/2005	<1.0	<1.0	<1.0	<2.0	12.20	NA
	12/13/2005	Dry - Not Sampled				17.00	NA
	03/21/2006	Dry - Not Sampled				Dry	NA
	06/28/2006	<1.0	<1.0	<1.0	<1.0	19.50	NA
	09/30/2006	<1.0	<1.0	<1.0	<1.0	17.29	NA
	MW03 destroyed as of 12/5/2006						
MW03R	09/11/2007	<1.0	<1.0	<1.0	<1.0	9.45	87.50
	12/07/2007	Insufficient Water - Not Sampled				17.25	79.70
	03/06/2008	Dry - Not Sampled				Dry	NA
	06/10/2008	<1.0	<1.0	<1.0	<1.0	15.11	81.84
	09/04/2008	<1.0	<1.0	<1.0	<1.0	12.87	84.07
	12/17/2008	<1.0	<1.0	<1.0	<1.0	NM	NA
	03/09/2009	Dry - Not Sampled				Dry	NA
	06/24/2009	<1.0	<1.0	<1.0	<1.0	16.62	80.33
	09/10/2009	<1.0	<1.0	<1.0	<1.0	12.38	84.57
	12/21/2009	Insufficient Water - Not Sampled				17.89	79.06
	03/08/2010	Dry - Not Sampled				Dry	NA
	06/30/2010	<1.0	<1.0	<1.0	<1.0	12.03	84.92
	09/30/2010	<1.0	<1.0	<1.0	<1.0	8.97	87.98
	12/08/2010	<1.0	<1.0	<1.0	<1.0	15.94	81.01
	03/25/2011	Dry - Not Sampled				Dry	NA
	06/23/2011	<1.0	<1.0	<1.0	<1.0	15.41	81.54
	09/26/2011	<1.0	<1.0	<1.0	<1.0	11.57	85.38
	12/29/2011	<1.0	<1.0	<1.0	<1.0	18.27	78.68
	03/20/2012	Dry - Not Sampled				Dry	NA
	06/12/2012	Dry - Not Sampled				Dry	NA
	09/25/2012	Dry - Not Sampled				Dry	NA
	12/18/2012	Dry - Not Sampled				Dry	NA
	03/14/2013	Dry - Not Sampled				Dry	NA
	06/26/2013	Dry - Not Sampled				Dry	NA
	09/23/2013	<1.0	<1.0	<1.0	<1.0	17.00	79.95
	12/27/2013	Dry - Not Sampled				Dry	NA
	03/13/2014	Dry - Not Sampled				Dry	NA



TABLE 1 (Continued)
GROUNDWATER ANALYTICAL AND FIELD RESULTS
ANDERSON 12-27/ BOHLENDER 1-27
WELD COUNTY, COLORADO
KERR-MCGEE OIL & GAS ONSHORE LP

Well Name	Date	Benzene (ug/L)	Toluene (ug/L)	Ethylbenzene (ug/L)	Xylenes (ug/L)	Depth Water/ (Product Thickness) (ft bgs)	Relative GW Elev. (ft)
MW03R	06/24/2014	Dry - Not Sampled				Dry	NA
	09/26/2014	Insufficient Water - Not Sampled				19.03	77.91
	12/23/2014	Insufficient Water - Not Sampled				19.13	77.81
MW04	03/06/2008	Dry - Not Sampled				Dry	NA
	06/10/2008	<1.0	<1.0	<1.0	<1.0	12.00	NA
	09/04/2008	<1.0	<1.0	<1.0	<1.0	8.95	NA
	12/17/2008	<1.0	<1.0	<1.0	<1.0	NM	NA
	03/09/2009	Insufficient Water - Not Sampled				19.20	NA
	06/24/2009	<1.0	<1.0	<1.0	<1.0	14.12	NA
	09/10/2009	<1.0	<1.0	<1.0	<1.0	12.03	NA
	12/21/2009	<1.0	<1.0	<1.0	<1.0	15.60	NA
	03/08/2010	Dry - Not Sampled				Dry	NA
	06/30/2010	Not Found - Not Sampled				Not Found	NA
	09/30/2010	Not Found - Not Sampled				Not Found	NA
	12/08/2010	<1.0	<1.0	<1.0	<1.0	13.67	NA
	03/25/2011	Dry - Not Sampled				Dry	NA
	06/23/2011	Not Found - Not Sampled				Not Found	NA
	MW04 destroyed as of 9/26/2011						
MW04R	12/29/2011	Not Found - Not Sampled				Not Found	NA
	MW04R destroyed as of 3/20/2012						
MW05	03/06/2008	Dry - Not Sampled				Dry	NA
	06/10/2008	310	<1.0	9.3	13	16.47	78.58
	09/04/2008	4.5	<1.0	9.4	5.6	13.74	81.31
	12/17/2008	Insufficient Water - Not Sampled				Dry	NA
	03/09/2009	Insufficient Water - Not Sampled				19.07	75.98
	06/24/2009	76	<1.0	11	2.2	15.53	79.52
	09/10/2009	200	<1.0	180	340	11.09	83.96
	12/21/2009	Insufficient Water - Not Sampled				19.21	78.58
	03/08/2010	Dry - Not Sampled				Dry	NA
	06/30/2010	26	<1.0	35	<1.0	15.66	82.13
	09/30/2010	9.1	8.3	5.5	<1.0	11.37	86.42
	12/08/2010	1.0	<1.0	<1.0	<1.0	17.77	80.02
	03/25/2011	Dry - Not Sampled				Dry	NA
	06/23/2011	66	<1.0	<1.0	<1.0	17.62	80.17
	09/26/2011	2.2	4.6	<1.0	<1.0	14.92	81.87



TABLE 1 (Continued)
GROUNDWATER ANALYTICAL AND FIELD RESULTS
ANDERSON 12-27/ BOHLENDER 1-27
WELD COUNTY, COLORADO
KERR-MCGEE OIL & GAS ONSHORE LP

Well Name	Date	Benzene (ug/L)	Toluene (ug/L)	Ethylbenzene (ug/L)	Xylenes (ug/L)	Depth Water/ (Product Thickness) (ft bgs)	Relative GW Elev. (ft)
MW05	12/29/2011	Insufficient Water - Not Sampled				19.27	77.52
	03/20/2012	Dry - Not Sampled				Dry	NA
	06/12/2012	1.1	<1.0	<1.0	<1.0	20.70	76.09
	09/25/2012	Insufficient Water - Not Sampled				20.35	76.44
	12/18/2012	Insufficient Water - Not Sampled				19.53	77.26
	03/14/2013	Dry - Not Sampled				Dry	NA
	06/26/2013	Dry - Not Sampled				Dry	NA
	09/23/2013	Dry - Not Sampled				Dry	NA
	11/01/2013	Dry - Not Sampled				NM	NA
	12/27/2013	Dry - Not Sampled				Dry	NA
	03/13/2014	Dry - Not Sampled				Dry	NA
MW05R	06/09/2014	Not Sampled				27.79	NA
	06/24/2014	140	<1.0	417	5120	25.65	NA
	09/26/2014	108	<20.0	287	2330	21.21	NA
	12/23/2014	61.4	<20.0	183	1730	24.08	NA
MW06	03/06/2008	Dry - Not Sampled				Dry	NA
	06/10/2008	<1.0	<1.0	<1.0	<1.0	16.52	76.56
	09/04/2008	<1.0	<1.0	<1.0	<1.0	14.11	78.97
	12/17/2008	<1.0	<1.0	<1.0	<1.0	NM	NA
	03/09/2009	Insufficient Water - Not Sampled				19.55	73.53
	06/24/2009	<1.0	<1.0	<1.0	<1.0	18.32	77.74
	09/10/2009	<1.0	<1.0	<1.0	<1.0	12.71	83.35
	12/21/2009	<1.0	<1.0	<1.0	<1.0	18.70	76.81
	03/08/2010	Dry - Not Sampled				Dry	NA
	06/30/2010	<1.0	<1.0	<1.0	<1.0	15.16	80.35
	09/30/2010	<1.0	<1.0	<1.0	<1.0	11.01	84.50
	12/08/2010	<1.0	<1.0	<1.0	<1.0	17.26	78.25
	03/25/2011	Dry - Not Sampled				Dry	NA
	06/23/2011	Dry - Not Sampled				Dry	NA
	09/26/2011	<1.0	<1.0	<1.0	<1.0	13.45	82.06
	12/29/2011	<1.0	<1.0	<1.0	<1.0	20.95	74.56
	03/20/2012	Dry - Not Sampled				Dry	NA
	06/12/2012	Dry - Not Sampled				Dry	NA
	09/25/2012	Dry - Not Sampled				Dry	NA



TABLE 1 (Continued)
GROUNDWATER ANALYTICAL AND FIELD RESULTS
ANDERSON 12-27/ BOHLENDER 1-27
WELD COUNTY, COLORADO
KERR-MCGEE OIL & GAS ONSHORE LP

Well Name	Date	Benzene (ug/L)	Toluene (ug/L)	Ethylbenzene (ug/L)	Xylenes (ug/L)	Depth Water/ (Product Thickness) (ft bgs)	Relative GW Elev. (ft)
MW06	12/18/2012	Dry - Not Sampled				Dry	NA
	03/14/2013	Dry - Not Sampled				Dry	NA
	06/26/2013	Dry - Not Sampled				Dry	NA
	09/23/2013	Dry - Not Sampled				Dry	NA
	11/01/2013	Dry - Not Sampled				NM	NA
	12/27/2013	Dry - Not Sampled				Dry	NA
	03/13/2014	Dry - Not Sampled				Dry	NA
	06/24/2014	Dry - Not Sampled				Dry	NA
	09/26/2014	Damaged - Not Sampled				PVC Blocked	NA
MW06 destroyed as of 9/26/2014							
MW07	12/17/2008	<1.0	<1.0	<1.0	<1.0	NM	NA
	03/09/2009	Insufficient Water - Not Sampled				22.73	NA
	06/24/2009	<1.0	<1.0	<1.0	<1.0	18.67	NA
	09/10/2009	Not Found - Not Sampled				Not Found	NA
	03/08/2010	Dry - Not Sampled				Dry	NA
	06/30/2010	<1.0	<1.0	<1.0	<1.0	14.70	NA
	09/30/2010	<1.0	<1.0	<1.0	<1.0	10.97	NA
MW07 destroyed as of 12/8/2010							
MW08	12/17/2008	32	<1.0	17	91	NM	NA
	03/09/2009	Dry - Not Sampled				Dry	NA
	06/24/2009	16	<1.0	19	130	17.35	NA
	09/10/2009	13	<1.0	14	9.0	12.23	NA
	12/21/2009	36	<1.0	24	12	19.12	NA
	03/08/2010	Dry - Not Sampled				Dry	NA
	06/30/2010	3.5	<1.0	2.8	4.4	14.61	NA
	09/30/2010	Not Found - Not Sampled				NM	NA
MW08 destroyed as of 12/8/2010							
MW08R	02/22/2011	34	<1.0	260	2300	23.58	70.74
	03/25/2011	16	<1.0	190	3000	25.70	68.62
	06/23/2011	<1.0	<1.0	3.1	110	16.82	77.50
	09/26/2011	<1.0	<1.0	11	<1.0	12.57	81.75
	12/29/2011	5.4	<1.0	18	2.3	20.00	74.32
	03/20/2012	6.9	<1.0	160	1400	22.15	72.17
	06/12/2012	3.2	<1.0	140	1200	22.10	72.22
	09/25/2012	<1.0	<1.0	4.7	7.6	21.55	72.77



TABLE 1 (Continued)
GROUNDWATER ANALYTICAL AND FIELD RESULTS
ANDERSON 12-27/ BOHLENDER 1-27
WELD COUNTY, COLORADO
KERR-MCGEE OIL & GAS ONSHORE LP

Well Name	Date	Benzene (ug/L)	Toluene (ug/L)	Ethylbenzene (ug/L)	Xylenes (ug/L)	Depth Water/ (Product Thickness) (ft bgs)	Relative GW Elev. (ft)
MW08R	12/18/2012	1.6	3.4	8.1	<1.0	26.25	68.07
	03/14/2013	Dry - Not Sampled				Dry	NA
	06/26/2013	Dry - Not Sampled				Dry	NA
	09/23/2013	<1.0	<1.0	35	13	18.60	75.72
	12/27/2013	<4.0	<4.0	105	91.1	24.45	69.87
	03/13/2014	<4.0	<4.0	26.3	16.4	29.85	64.78
MW08R2	06/09/2014	Not Sampled				26.79	NA
	06/24/2014	2.3	<1.0	119	163	26.20	NA
	09/26/2014	1.1	<1.0	24.7	3.3	20.26	NA
	12/23/2014	1.4	<1.0	30.4	90.3	23.67	NA
MW09	12/17/2008	62	<1.0	34	170	NM	NA
	03/09/2009	Dry - Not Sampled				Dry	NA
	06/24/2009	3.9	<1.0	<1.0	<1.0	17.21	NA
	09/10/2009	<1.0	<1.0	<1.0	<1.0	12.41	NA
	12/21/2009	40	<1.0	15	27	18.91	NA
	03/08/2010	Dry - Not Sampled				Dry	NA
	06/30/2010	Not Found - Not Sampled				Not Found	NA
	09/30/2010	Not Found - Not Sampled				Not Found	NA
	12/08/2010	9.1	<1.0	<1.0	<1.0	16.60	NA
	03/25/2011	Insufficient Water - Not Sampled				23.10	NA
	06/23/2011	Not Found - Not Sampled				Not Found	NA
	MW09 destroyed as of 9/26/2011						
MW09R	03/20/2012	<1.0	<1.0	<1.0	<1.0	21.05	72.65
	06/12/2012	<1.0	<1.0	<1.0	<1.0	20.92	72.78
	09/25/2012	29	<1.0	<1.0	<1.0	22.40	71.30
	12/18/2012	6.8	<1.0	<1.0	<1.0	27.12	66.58
	03/14/2013	Dry - Not Sampled				Dry	NA
	06/26/2013	Dry - Not Sampled				Dry	NA
	09/23/2013	1.1	<1.0	<1.0	<1.0	19.00	74.70
	12/27/2013	<4.0	<4.0	<4.0	<4.0	24.20	69.50
	03/13/2014	<4.0	<4.0	<4.0	<4.0	30.06	63.92
	06/09/2014	Not Sampled				26.93	67.03
	06/24/2014	<1.0	<1.0	<1.0	<1.0	26.46	67.50
	09/26/2014	1.8	<1.0	<1.0	<1.0	20.62	73.34
	12/23/2014	8.8	<1.0	<1.0	<1.0	23.40	70.56



TABLE 1 (Continued)
GROUNDWATER ANALYTICAL AND FIELD RESULTS
ANDERSON 12-27/ BOHLENDER 1-27
WELD COUNTY, COLORADO
KERR-MCGEE OIL & GAS ONSHORE LP

Well Name	Date	Benzene (ug/L)	Toluene (ug/L)	Ethylbenzene (ug/L)	Xylenes (ug/L)	Depth Water/ (Product Thickness) (ft bgs)	Relative GW Elev. (ft)
MW10	06/24/2009	<1.0	<1.0	<1.0	4.0	17.12	NA
	09/10/2009	<1.0	<1.0	<1.0	<1.0	11.71	NA
	12/21/2009	16	<1.0	<1.0	<1.0	18.90	NA
	03/08/2010	Dry - Not Sampled				Dry	NA
	06/30/2010	22	<1.0	140	390	13.35	NA
	09/30/2010	Not Found - Not Sampled				Not Found	NA
	MW10 destroyed as of 12/8/2010						
MW10R	02/22/2011	<1.0	<1.0	33	43	23.00	69.96
	03/25/2011	<1.0	<1.0	<1.0	<1.0	25.08	67.88
	06/23/2011	<1.0	<1.0	<1.0	<1.0	16.36	76.60
	09/26/2011	<1.0	<1.0	<1.0	<1.0	9.82	83.14
	12/29/2011	<1.0	<1.0	<1.0	<1.0	19.50	73.46
	03/20/2012	<1.0	<1.0	<1.0	<1.0	22.05	70.91
	06/12/2012	<1.0	<1.0	<1.0	<1.0	21.95	71.01
	09/25/2012	<1.0	<1.0	<1.0	<1.0	20.30	72.66
	12/18/2012	<1.0	130	<1.0	<1.0	26.65	66.31
	03/14/2013	Dry - Not Sampled				Dry	NA
	06/26/2013	Dry - Not Sampled				Dry	NA
	09/23/2013	<1.0	<1.0	<1.0	<1.0	17.80	75.16
	12/27/2013	<4.0	<4.0	<4.0	<4.0	23.79	69.17
	03/13/2014	<4.0	<4.0	<4.0	<4.0	29.77	63.52
	06/24/2014	<1.0	<1.0	<1.0	<1.0	25.46	67.94
	09/26/2014	<1.0	<1.0	<1.0	<1.0	19.51	73.89
	12/23/2014	<1.0	<1.0	<1.0	<1.0	23.09	70.31
MW11	06/24/2009	8.9	<1.0	15	200	17.02	NA
	09/10/2009	<1.0	<1.0	<1.0	<1.0	12.21	NA
	12/21/2009	1.4	<1.0	1.6	<1.0	18.62	NA
	03/08/2010	Dry - Not Sampled				Dry	NA
	06/30/2010	<1.0	<1.0	<1.0	<1.0	13.73	NA
	09/30/2010	Not Found - Not Sampled				Not Found	NA
	MW11 destroyed as of 12/8/2010						
MW11R	02/22/2011	110	<1.0	190	1600	22.74	69.68
	03/25/2011	94	1.1	120	1200	25.01	67.41
	06/23/2011	1.4	<1.0	2.1	20	16.62	75.80
	09/26/2011	<1.0	<1.0	<1.0	<1.0	11.22	81.20



TABLE 1 (Continued)
GROUNDWATER ANALYTICAL AND FIELD RESULTS
ANDERSON 12-27/ BOHLENDER 1-27
WELD COUNTY, COLORADO
KERR-MCGEE OIL & GAS ONSHORE LP

Well Name	Date	Benzene (ug/L)	Toluene (ug/L)	Ethylbenzene (ug/L)	Xylenes (ug/L)	Depth Water/ (Product Thickness) (ft bgs)	Relative GW Elev. (ft)
MW11R	12/29/2011	1.2	1.1	<1.0	<1.0	19.35	73.07
	03/20/2012	23	<1.0	19	6.2	21.30	71.12
	06/12/2012	26	<1.0	14	11	21.26	71.16
	09/25/2012	110	<1.0	73	93	25.10	67.32
	12/18/2012	120	<1.0	140	190	27.05	65.37
	03/14/2013	Dry - Not Sampled				Dry	NA
	06/26/2013	Dry - Not Sampled				Dry	NA
	09/23/2013	Dry - Not Sampled				Dry	NA
	12/27/2013	50.7	<4.0	106	56.0	23.91	68.51
	03/13/2014	44.5	<4.0	195	145	30.28	62.43
	06/24/2014	81.7	<4.0	293	210	26.01	66.69
	09/26/2014	97.9	<2.0	106	46.0	20.04	72.66
	12/31/2014	108	<1.0	167	24.8	23.02	69.68
MW12	06/24/2009	<1.0	<1.0	<1.0	<1.0	16.31	NA
	09/10/2009	<1.0	<1.0	<1.0	<1.0	11.62	NA
	12/21/2009	<1.0	<1.0	<1.0	<1.0	18.54	NA
	03/08/2010	Dry - Not Sampled				Dry	NA
	06/30/2010	<1.0	<1.0	<1.0	<1.0	13.85	NA
	09/30/2010	Not Found - Not Sampled				Not Found	NA
	MW12 destroyed as of 12/8/2010						
MW12R	02/22/2011	<1.0	<1.0	<1.0	<1.0	22.84	69.50
	03/25/2011	<1.0	<1.0	<1.0	<1.0	25.25	67.09
	06/23/2011	<1.0	<1.0	<1.0	<1.0	17.03	75.31
	09/26/2011	<1.0	<1.0	<1.0	<1.0	11.84	80.50
	12/29/2011	<1.0	<1.0	<1.0	<1.0	19.31	73.03
	03/20/2012	<1.0	<1.0	<1.0	<1.0	21.30	71.04
	06/12/2012	<1.0	<1.0	<1.0	<1.0	21.08	71.26
	09/25/2012	<1.0	<1.0	<1.0	<1.0	25.14	67.20
	12/18/2012	<1.0	<1.0	<1.0	<1.0	27.20	65.14
	03/14/2013	Dry - Not Sampled				Dry	NA
	06/26/2013	Dry - Not Sampled				Dry	NA
	09/23/2013	2.1	<1.0	<1.0	<1.0	19.20	73.14
	12/27/2013	<4.0	<4.0	<4.0	<4.0	24.25	68.09
	03/13/2014	<4.0	<4.0	<4.0	<4.0	29.15	63.29
	06/24/2014	<1.0	<1.0	<1.0	<1.0	26.31	66.15



TABLE 1 (Continued)
GROUNDWATER ANALYTICAL AND FIELD RESULTS
ANDERSON 12-27/ BOHLENDER 1-27
WELD COUNTY, COLORADO
KERR-MCGEE OIL & GAS ONSHORE LP

Well Name	Date	Benzene (ug/L)	Toluene (ug/L)	Ethylbenzene (ug/L)	Xylenes (ug/L)	Depth Water/ (Product Thickness) (ft bgs)	Relative GW Elev. (ft)
MW12R	09/26/2014	<1.0	<1.0	<1.0	<1.0	20.71	71.75
	12/31/2014	<1.0	<1.0	<1.0	<1.0	23.43	69.03
MW13	02/22/2011	<1.0	<1.0	<1.0	<1.0	23.38	68.76
	03/25/2011	<1.0	<1.0	<1.0	<1.0	24.90	67.24
	06/23/2011	<1.0	<1.0	<1.0	<1.0	10.56	81.58
	09/27/2011	<1.0	<1.0	<1.0	<1.0	NM	NA
	12/29/2011	<1.0	<1.0	<1.0	<1.0	19.45	72.69
	03/20/2012	<1.0	<1.0	<1.0	<1.0	22.25	69.89
	06/12/2012	<1.0	<1.0	<1.0	<1.0	21.95	70.19
	09/25/2012	<1.0	1.5	<1.0	<1.0	18.20	73.94
	12/18/2012	<1.0	<1.0	<1.0	<1.0	26.49	65.65
	03/14/2013	Dry - Not Sampled				Dry	NA
	06/26/2013	Dry - Not Sampled				Dry	NA
	09/23/2013	<1.0	<1.0	<1.0	<1.0	17.78	74.36
	12/27/2013	<1.0	<1.0	<1.0	<1.0	23.70	68.44
	03/13/2014	<4.0	<4.0	<4.0	<4.0	30.04	62.46
	06/24/2014	<1.0	<1.0	<1.0	<1.0	25.40	67.14
	09/26/2014	<1.0	<1.0	<1.0	<1.0	19.53	73.01
	12/23/2014	<1.0	<1.0	<1.0	<1.0	22.90	69.64
MW14	02/22/2011	69	<1.0	190	1000	22.53	68.51
	03/25/2011	31	<1.0	130	510	24.72	66.32
	06/23/2011	<1.0	<1.0	2.3	2.4	16.75	74.29
	09/27/2011	<1.0	<1.0	<1.0	<1.0	NM	NA
	12/29/2011	<1.0	<1.0	<1.0	<1.0	19.50	71.54
	03/20/2012	28	<1.0	120	4.8	20.50	70.54
	06/12/2012	1.4	<1.0	8.3	<1.0	20.27	70.77
	09/25/2012	<1.0	<1.0	<1.0	<1.0	21.30	69.74
	12/18/2012	6.0	15	<1.0	<1.0	26.67	64.37
	03/14/2013	Dry - Not Sampled				Dry	NA
	06/26/2013	Insufficient Water - Not Sampled				Dry	NA
	09/23/2013	<1.0	<1.0	1.2	<1.0	18.35	72.69
	12/27/2013	<4.0	<4.0	<4.0	<4.0	23.58	67.46
	03/13/2014	<4.0	<4.0	<4.0	<4.0	29.83	61.54
	06/24/2014	34.5	<1.0	<1.0	<1.0	25.77	65.71



TABLE 1 (Continued)
GROUNDWATER ANALYTICAL AND FIELD RESULTS
ANDERSON 12-27/ BOHLENDER 1-27
WELD COUNTY, COLORADO
KERR-MCGEE OIL & GAS ONSHORE LP

Well Name	Date	Benzene (ug/L)	Toluene (ug/L)	Ethylbenzene (ug/L)	Xylenes (ug/L)	Depth Water/ (Product Thickness) (ft bgs)	Relative GW Elev. (ft)
MW14	09/26/2014	14.1	<1.0	<1.0	<1.0	19.78	71.70
	12/23/2014	42.7	<1.0	2.3	<1.0	23.05	68.43
MW15	06/23/2011	<1.0	<1.0	<1.0	<1.0	17.98	72.22
	09/26/2011	<1.0	<1.0	<1.0	<1.0	0.85	89.35
	12/29/2011	40	<1.0	88	<1.0	19.71	70.49
	03/20/2012	<1.0	<1.0	<1.0	<1.0	21.72	68.48
	06/12/2012	<1.0	<1.0	<1.0	<1.0	21.41	68.79
	09/25/2012	<1.0	<1.0	<1.0	<1.0	25.05	65.15
	12/18/2012	<1.0	<1.0	<1.0	<1.0	27.46	62.74
	03/14/2013	Dry - Not Sampled				Dry	NA
	06/26/2013	Insufficient Water - Not Sampled				Dry	NA
	09/23/2013	<1.0	<1.0	<1.0	<1.0	18.59	71.61
	12/27/2013	<4.0	<4.0	<4.0	<4.0	24.14	66.06
	03/13/2014	<4.0	<4.0	<4.0	<4.0	29.10	61.39
	06/24/2014	<1.0	<1.0	<1.0	<1.0	25.56	64.92
	09/26/2014	<1.0	<1.0	<1.0	<1.0	19.44	71.04
	12/23/2014	<1.0	<1.0	<1.0	<1.0	22.33	68.15
MW16	06/23/2011	2.8	<1.0	46	<1.0	17.54	71.30
	09/26/2011	<1.0	<1.0	<1.0	<1.0	1.25	87.59
	12/29/2011	1.8	<1.0	4.5	<1.0	18.85	69.99
	03/20/2012	29	<1.0	87	<1.0	19.75	69.09
	06/12/2012	1.5	<1.0	12	<1.0	19.70	69.14
	09/25/2012	<1.0	<1.0	<1.0	<1.0	25.40	63.44
	12/18/2012	2.4	<1.0	<1.0	<1.0	26.78	62.06
	03/14/2013	Dry - Not Sampled				Dry	NA
	06/26/2013	Insufficient Water - Not Sampled				Dry	NA
	09/23/2013	4.8	<1.0	<1.0	<1.0	19.00	69.84
	12/27/2013	<4.0	<4.0	<4.0	<4.0	24.05	64.79
	03/28/2014	4.0	<4.0	<4.0	<4.0	NM	NA
	06/24/2014	<1.0	<1.0	<1.0	<1.0	25.83	63.29
	09/26/2014	<1.0	<1.0	<1.0	<1.0	19.83	69.29
	12/23/2014	<1.0	<1.0	<1.0	<1.0	23.16	65.96
MW17	06/23/2011	<1.0	<1.0	<1.0	<1.0	16.70	73.32
	09/26/2011	3.1	<1.0	10	<1.0	10.95	79.07



TABLE 1 (Continued)
GROUNDWATER ANALYTICAL AND FIELD RESULTS
ANDERSON 12-27/ BOHLENDER 1-27
WELD COUNTY, COLORADO
KERR-MCGEE OIL & GAS ONSHORE LP

Well Name	Date	Benzene (ug/L)	Toluene (ug/L)	Ethylbenzene (ug/L)	Xylenes (ug/L)	Depth Water/ (Product Thickness) (ft bgs)	Relative GW Elev. (ft)
MW17	12/29/2011	1.8	<1.0	3.7	<1.0	NM	NA
	03/20/2012	2.7	<1.0	5.8	<1.0	21.15	68.87
	06/12/2012	4.6	<1.0	3.2	<1.0	20.95	69.07
	09/25/2012	1.7	<1.0	3.1	<1.0	25.60	64.42
	12/18/2012	1.8	<1.0	2.7	<1.0	26.55	63.47
	03/14/2013	Dry - Not Sampled				Dry	NA
	06/26/2013	Insufficient Water - Not Sampled				Dry	NA
	09/23/2013	<1.0	<1.0	<1.0	<1.0	18.55	71.47
	12/27/2013	11.2	<4.0	<4.0	<4.0	23.44	66.58
	03/13/2014	7.4	<4.0	<4.0	<4.0	30.09	60.25
	06/24/2014	3.0	<1.0	<1.0	<1.0	25.54	64.84
	09/26/2014	39.4	<1.0	<1.0	<1.0	20.32	70.06
	12/23/2014	21.2	<1.0	<1.0	<1.0	22.73	67.65
MW18	06/24/2014	<1.0	<1.0	<1.0	<1.0	25.70	NA
	09/26/2014	30.8	<1.0	<1.0	<1.0	19.48	NA
	12/23/2014	24.2	<1.0	<1.0	<1.0	22.00	NA
CGWQS		5	1000	700	1400		

Notes: ug/L - micrograms per Liter
ft bgs - feet below ground surface
GW - Groundwater

Elev. - Elevation
Bold numbers indicate result exceeded standard.
< - less than

NA - Not Analyzed/Not Available
NM - Not Measured
CGWQS - Colorado Groundwater Quality Standards

