

Noble Energy Inc.- Weld County, CO (Grid North)

Well Name: **Wells Ranch State A36-675**

Surface Location: Wells Ranch A36 Pad Sec.31-T6N-R63W

North American Datum 1983 , US State Plane 1983 , Colorado Northern Zone

Ground Elevation: 4655.0

+N/-S	+E/-W	Northing	Easting	Latitude	Longitude	Slot
0.0	0.0	1407702.63	3286199.75	40.447990	-104.471640	
H&P 326 RKB - 30' WELL @ 4685.0ft (H&P 326 RKB - 30')						

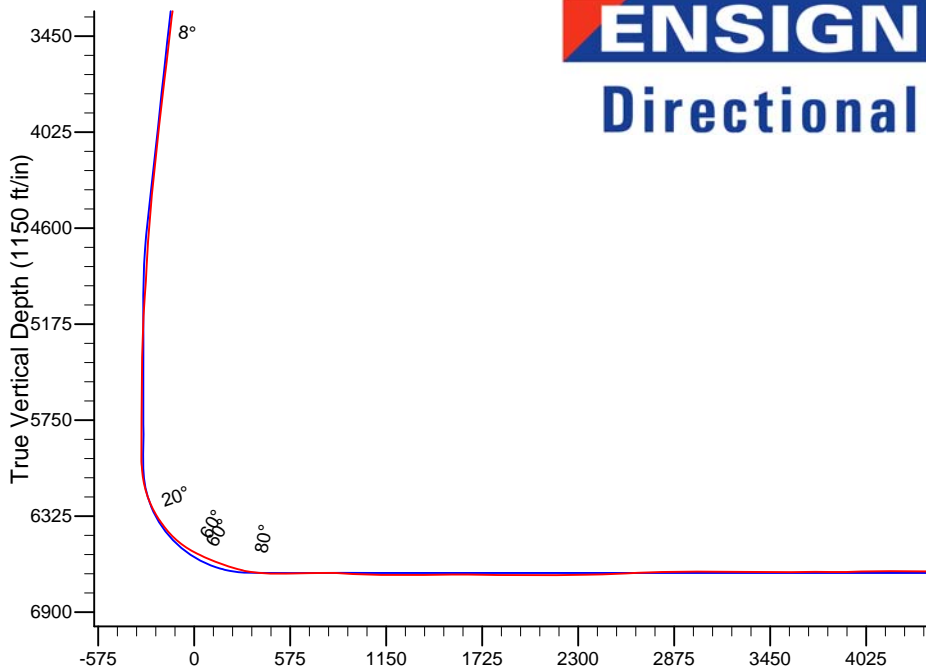
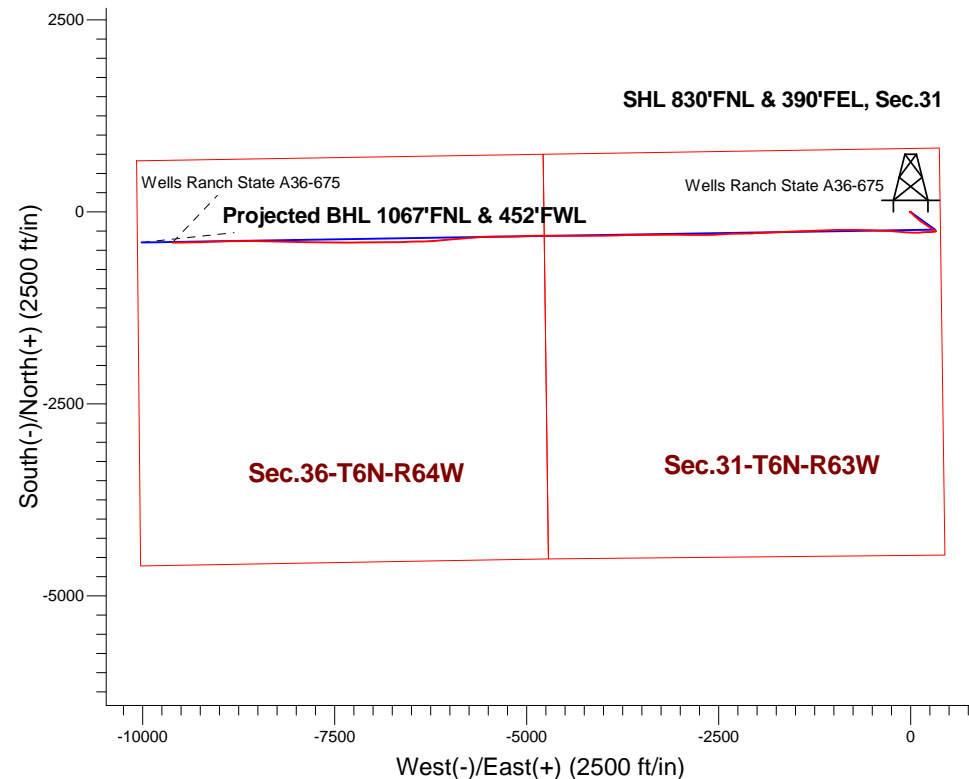
FINAL SURVEY

API #05-123-41508

Projected Bottom Hole Location

16336'MD 6670'TVD 401'S & 9611'W of SHL

90 degree Incl @ 268.8 degree AZM



Wells Ranch A36 Pad Sec.31-T6N-R63W
Wells Ranch State A36-675
Wellbore #1
15:55, July 13 2015

ANNOTATIONS

No annotation data is available.

LEGEND

- Wells Ranch State A36-675, Wellbore #1, Plan A - Rev 0 V0
- Wellbore #1

Wells Ranch State A36-675

Wells Ranch State A36-675

Projected BHL 1067'FNL & 452'FWL

Vertical Section at 267.61° (1150 ft/in)



Noble Energy Inc.- Weld County, CO (Grid North)

Sec.31-T6N-R63W

Wells Ranch A36 Pad Sec.31-T6N-R63W

Wells Ranch State A36-675

Wellbore #1

Design: Wellbore #1

Standard Survey Report

22 July, 2015

Company:	Noble Energy Inc.- Weld County, CO (Grid North)	Local Co-ordinate Reference:	Well Wells Ranch State A36-675
Project:	Sec.31-T6N-R63W	TVD Reference:	WELL @ 4685.0ft (H&P 326 RKB - 30')
Site:	Wells Ranch A36 Pad Sec.31-T6N-R63W	MD Reference:	WELL @ 4685.0ft (H&P 326 RKB - 30')
Well:	Wells Ranch State A36-675	North Reference:	Grid
Wellbore:	Wellbore #1	Survey Calculation Method:	Minimum Curvature
Design:	Wellbore #1	Database:	EDM 2003.21 Single User Db

Project	Sec.31-T6N-R63W, Weld County, CO		
Map System:	US State Plane 1983	System Datum:	Mean Sea Level
Geo Datum:	North American Datum 1983		Using Well Reference Point
Map Zone:	Colorado Northern Zone		Using geodetic scale factor

Site		Wells Ranch A36 Pad Sec.31-T6N-R63W			
Site Position:		Northing:	1,407,666.24 ft	Latitude:	40.447890
From:	Lat/Long	Easting:	3,286,202.95 ft	Longitude:	-104.471630
Position Uncertainty:	0.0 ft	Slot Radius:	"	Grid Convergence:	0.66 °

Well	Wells Ranch State A36-675					
Well Position	+N-S	0.0 ft	Northing:	1,407,702.63 ft	Latitude:	40.447990
	+E-W	0.0 ft	Easting:	3,286,199.75 ft	Longitude:	-104.471640
Position Uncertainty		0.0 ft	Wellhead Elevation:	ft	Ground Level:	4,655.0 ft

Wellbore	Wellbore #1				
Magnetics	Model Name	Sample Date	Declination (°)	Dip Angle (°)	Field Strength (nT)
	IGRF2010	6/10/2015	8.23	67.01	52,814

Design	Wellbore #1				
Audit Notes:					
Version:	1.0	Phase:	ACTUAL	Tie On Depth:	0.0
Vertical Section:	Depth From (TVD) (ft)	+N/-S (ft)	+E/-W (ft)	Direction (°)	
	0.0	0.0	0.0	267.61	

Survey Program		Date	7/22/2015		
From (ft)	To (ft)	Survey (Wellbore)	Tool Name	Description	
922.0	7,034.0	Curve/Intermediate (Wellbore #1)	MWD	MWD - Standard	
7,118.0	16,336.0	Lateral (Wellbore #1)	MWD+IFR1+MS_WY	Fixed:v2:Rockies, crustal dec + 3-axis correction	

Survey	Wellbore Data									
	Measured Depth (ft)	Inclination (°)	Azimuth (°)	Vertical Depth (ft)	+N/-S (ft)	+E/-W (ft)	Vertical Section (ft)	Dogleg Rate (°/100ft)	Build Rate (°/100ft)	Turn Rate (°/100ft)
Survey Data	0.0	0.00	0.00	0.0	0.0	0.0	0.0	0.00	0.00	0.00
	922.0	0.18	273.00	922.0	0.1	-1.4	1.4	0.02	0.02	0.00
	1,016.0	0.26	281.35	1,016.0	0.1	-1.8	1.8	0.09	0.09	8.88
	1,109.0	0.26	241.54	1,109.0	0.1	-2.2	2.2	0.19	0.00	-42.81
	1,296.0	0.53	268.08	1,296.0	-0.2	-3.4	3.4	0.17	0.14	14.19
	1,389.0	0.44	265.09	1,389.0	-0.2	-4.2	4.2	0.10	-0.10	-3.22
	1,482.0	0.53	278.71	1,482.0	-0.2	-5.0	5.0	0.16	0.10	14.65
	1,574.0	0.53	286.89	1,574.0	0.0	-5.8	5.8	0.08	0.00	8.89
	1,667.0	0.66	295.15	1,667.0	0.4	-6.7	6.7	0.17	0.14	8.88
	1,760.0	0.62	309.74	1,760.0	0.9	-7.6	7.6	0.18	-0.04	15.69
	1,854.0	0.04	243.03	1,854.0	1.2	-8.0	8.0	0.64	-0.62	-70.97

Company:	Noble Energy Inc.- Weld County, CO (Grid North)	Local Co-ordinate Reference:	Well Wells Ranch State A36-675
Project:	Sec.31-T6N-R63W	TVD Reference:	WELL @ 4685.0ft (H&P 326 RKB - 30')
Site:	Wells Ranch A36 Pad Sec.31-T6N-R63W	MD Reference:	WELL @ 4685.0ft (H&P 326 RKB - 30')
Well:	Wells Ranch State A36-675	North Reference:	Grid
Wellbore:	Wellbore #1	Survey Calculation Method:	Minimum Curvature
Design:	Wellbore #1	Database:	EDM 2003.21 Single User Db

Survey									
Measured Depth (ft)	Inclination (°)	Azimuth (°)	Vertical Depth (ft)	+N/-S (ft)	+E/-W (ft)	Vertical Section (ft)	Dogleg Rate (°/100ft)	Build Rate (°/100ft)	Turn Rate (°/100ft)
1,947.0	0.79	114.09	1,947.0	0.9	-7.5	7.4	0.88	0.81	-138.65
2,041.0	3.65	120.60	2,040.9	-0.8	-4.3	4.3	3.05	3.04	6.93
2,133.0	6.02	134.75	2,132.6	-5.7	1.7	-1.4	2.86	2.58	15.38
2,225.0	7.69	134.60	2,223.9	-13.4	9.5	-8.9	1.82	1.82	-0.16
2,412.0	8.22	134.75	2,409.1	-31.6	27.9	-26.5	0.28	0.28	0.08
2,504.0	7.78	134.40	2,500.2	-40.6	37.0	-35.3	0.48	-0.48	-0.38
2,597.0	8.40	130.71	2,592.3	-49.5	46.6	-44.5	0.87	0.67	-3.97
2,689.0	8.09	130.97	2,683.3	-58.1	56.6	-54.1	0.34	-0.34	0.28
2,782.0	9.63	131.94	2,775.2	-67.6	67.3	-64.5	1.66	1.66	1.04
2,875.0	10.20	130.71	2,866.8	-78.2	79.4	-76.0	0.65	0.61	-1.32
2,969.0	9.85	130.79	2,959.4	-88.8	91.8	-88.0	0.37	-0.37	0.09
3,063.0	9.85	129.65	3,052.0	-99.2	104.0	-99.8	0.21	0.00	-1.21
3,157.0	9.32	127.98	3,144.7	-109.0	116.2	-111.6	0.64	-0.56	-1.78
3,251.0	8.92	126.40	3,237.5	-118.0	128.1	-123.1	0.50	-0.43	-1.68
3,345.0	8.57	125.34	3,330.4	-126.4	139.7	-134.3	0.41	-0.37	-1.13
3,440.0	8.09	123.59	3,424.4	-134.2	151.0	-145.3	0.57	-0.51	-1.84
3,534.0	7.82	124.03	3,517.5	-141.4	161.8	-155.8	0.29	-0.29	0.47
3,628.0	8.18	124.38	3,610.6	-148.8	172.7	-166.3	0.39	0.38	0.37
3,722.0	8.31	124.47	3,703.6	-156.4	183.8	-177.1	0.14	0.14	0.10
3,816.0	8.44	123.67	3,796.6	-164.1	195.1	-188.1	0.19	0.14	-0.85
3,910.0	8.40	123.67	3,889.6	-171.7	206.6	-199.2	0.04	-0.04	0.00
4,004.0	8.04	123.32	3,982.6	-179.1	217.8	-210.1	0.39	-0.38	-0.37
4,098.0	7.74	122.62	4,075.7	-186.2	228.6	-220.6	0.34	-0.32	-0.74
4,192.0	7.29	122.62	4,168.9	-192.8	239.0	-230.7	0.48	-0.48	0.00
4,285.0	6.98	122.26	4,261.2	-199.0	248.7	-240.2	0.34	-0.33	-0.39
4,379.0	6.73	122.62	4,354.5	-205.0	258.2	-249.4	0.27	-0.27	0.38
4,473.0	6.42	123.05	4,447.9	-210.8	267.2	-258.2	0.33	-0.33	0.46
4,567.0	5.76	127.36	4,541.4	-216.6	275.4	-266.1	0.85	-0.70	4.59
4,661.0	5.58	130.35	4,634.9	-222.4	282.6	-273.1	0.37	-0.19	3.18
4,755.0	5.09	132.46	4,728.5	-228.2	289.2	-279.4	0.56	-0.52	2.24
4,849.0	4.70	135.10	4,822.2	-233.7	295.0	-285.0	0.48	-0.41	2.81
4,943.0	4.39	125.69	4,915.9	-238.5	300.6	-290.4	0.86	-0.33	-10.01
5,037.0	4.17	106.27	5,009.6	-241.6	306.8	-296.5	1.55	-0.23	-20.66
5,131.0	3.70	98.90	5,103.4	-243.0	313.1	-302.7	0.73	-0.50	-7.84
5,225.0	1.63	100.82	5,197.3	-243.7	317.4	-307.0	2.20	-2.20	2.04
5,413.0	1.36	94.93	5,385.2	-244.4	322.2	-311.8	0.17	-0.14	-3.13
5,507.0	0.92	110.05	5,479.2	-244.8	324.1	-313.6	0.56	-0.47	16.09
5,601.0	0.62	110.31	5,573.2	-245.2	325.2	-314.7	0.32	-0.32	0.28
5,695.0	0.74	134.04	5,667.2	-245.8	326.2	-315.6	0.32	0.13	25.24
5,790.0	0.70	142.92	5,762.2	-246.7	326.9	-316.4	0.12	-0.04	9.35
5,884.0	1.09	175.35	5,856.2	-248.1	327.4	-316.7	0.66	0.41	34.50
5,979.0	1.41	170.34	5,951.2	-250.1	327.6	-316.9	0.36	0.34	-5.27
6,073.0	5.36	246.11	6,045.0	-253.0	323.8	-313.0	5.53	4.20	80.61
6,168.0	12.35	259.03	6,138.8	-256.8	309.8	-298.8	7.60	7.36	13.60
6,262.0	21.23	264.12	6,228.7	-260.4	282.9	-271.8	9.57	9.45	5.41
6,357.0	30.55	269.48	6,314.1	-262.4	241.6	-230.4	10.11	9.81	5.64
6,452.0	38.24	267.37	6,392.4	-264.0	188.0	-176.8	8.19	8.09	-2.22
6,546.0	46.72	265.62	6,461.7	-267.9	124.7	-113.4	9.11	9.02	-1.86
6,640.0	59.03	270.01	6,518.4	-270.6	49.9	-38.6	13.61	13.10	4.67
6,735.0	64.74	274.58	6,563.1	-267.1	-33.7	44.8	7.36	6.01	4.81
6,830.0	70.00	274.93	6,599.7	-259.8	-121.1	131.8	5.55	5.54	0.37
6,925.0	71.65	273.62	6,630.9	-253.2	-210.5	220.9	2.17	1.74	-1.38
7,019.0	79.08	271.15	6,654.6	-249.4	-301.3	311.5	8.30	7.90	-2.63
7,034.0	80.79	270.72	6,657.2	-249.2	-316.1	326.2	11.74	11.40	-2.87

Company:	Noble Energy Inc.- Weld County, CO (Grid North)	Local Co-ordinate Reference:	Well Wells Ranch State A36-675
Project:	Sec.31-T6N-R63W	TVD Reference:	WELL @ 4685.0ft (H&P 326 RKB - 30')
Site:	Wells Ranch A36 Pad Sec.31-T6N-R63W	MD Reference:	WELL @ 4685.0ft (H&P 326 RKB - 30')
Well:	Wells Ranch State A36-675	North Reference:	Grid
Wellbore:	Wellbore #1	Survey Calculation Method:	Minimum Curvature
Design:	Wellbore #1	Database:	EDM 2003.21 Single User Db

Survey									
Measured Depth (ft)	Inclination (°)	Azimuth (°)	Vertical Depth (ft)	+N/-S (ft)	+E/-W (ft)	Vertical Section (ft)	Dogleg Rate (°/100ft)	Build Rate (°/100ft)	Turn Rate (°/100ft)
7,118.0	86.72	272.78	6,666.4	-246.6	-399.5	409.5	7.47	7.06	2.45
7,212.0	89.90	272.69	6,669.1	-242.1	-493.4	503.0	3.38	3.38	-0.10
7,307.0	91.48	273.33	6,668.0	-237.1	-588.2	597.6	1.79	1.66	0.67
7,402.0	90.50	272.29	6,666.3	-232.5	-683.1	692.2	1.50	-1.03	-1.09
7,497.0	90.90	269.35	6,665.2	-231.1	-778.1	787.0	3.12	0.42	-3.09
7,591.0	86.44	268.55	6,667.4	-232.9	-872.0	880.9	4.82	-4.74	-0.85
7,686.0	87.17	267.57	6,672.7	-236.1	-966.8	975.8	1.29	0.77	-1.03
7,780.0	88.91	268.74	6,675.9	-239.1	-1,060.7	1,069.7	2.23	1.85	1.24
7,875.0	89.05	267.82	6,677.6	-241.9	-1,155.6	1,164.7	0.98	0.15	-0.97
7,970.0	90.06	268.31	6,678.3	-245.1	-1,250.6	1,259.7	1.18	1.06	0.52
8,064.0	91.18	268.75	6,677.3	-247.6	-1,344.5	1,353.7	1.28	1.19	0.47
8,159.0	90.36	267.75	6,676.0	-250.5	-1,439.5	1,448.7	1.36	-0.86	-1.05
8,254.0	91.05	267.09	6,674.8	-254.7	-1,534.4	1,543.7	1.01	0.73	-0.69
8,349.0	89.81	267.72	6,674.1	-259.0	-1,629.3	1,638.6	1.46	-1.31	0.66
8,443.0	88.84	267.76	6,675.2	-262.7	-1,723.2	1,732.6	1.03	-1.03	0.04
8,538.0	89.32	266.95	6,676.8	-267.1	-1,818.1	1,827.6	0.99	0.51	-0.85
8,632.0	89.37	267.47	6,677.8	-271.7	-1,912.0	1,921.6	0.56	0.05	0.55
8,727.0	89.02	266.69	6,679.2	-276.5	-2,006.8	2,016.6	0.90	-0.37	-0.82
8,822.0	90.96	268.97	6,679.2	-280.1	-2,101.7	2,111.6	3.15	2.04	2.40
8,916.0	91.58	270.00	6,677.1	-281.0	-2,195.7	2,205.5	1.28	0.66	1.10
9,011.0	89.89	267.41	6,675.9	-283.1	-2,290.7	2,300.5	3.26	-1.78	-2.73
9,106.0	91.11	266.77	6,675.1	-287.9	-2,385.5	2,395.5	1.45	1.28	-0.67
9,201.0	92.35	266.76	6,672.2	-293.3	-2,480.3	2,490.4	1.31	1.31	-0.01
9,296.0	92.53	268.10	6,668.1	-297.6	-2,575.2	2,585.3	1.42	0.19	1.41
9,390.0	91.79	269.92	6,664.6	-299.2	-2,669.1	2,679.2	2.09	-0.79	1.94
9,485.0	92.29	269.78	6,661.2	-299.4	-2,764.0	2,774.1	0.55	0.53	-0.15
9,580.0	91.44	270.57	6,658.1	-299.1	-2,859.0	2,868.9	1.22	-0.89	0.83
9,674.0	90.68	270.82	6,656.4	-298.0	-2,952.9	2,962.8	0.85	-0.81	0.27
9,768.0	88.91	269.97	6,656.7	-297.4	-3,046.9	3,056.7	2.09	-1.88	-0.90
9,863.0	89.13	269.85	6,658.4	-297.5	-3,141.9	3,151.6	0.26	0.23	-0.13
9,957.0	89.55	269.65	6,659.4	-297.9	-3,235.9	3,245.5	0.49	0.45	-0.21
10,052.0	89.62	269.40	6,660.1	-298.7	-3,330.9	3,340.5	0.27	0.07	-0.26
10,146.0	89.93	269.42	6,660.5	-299.7	-3,424.9	3,434.4	0.33	0.33	0.02
10,241.0	90.50	269.82	6,660.1	-300.3	-3,519.9	3,529.4	0.73	0.60	0.42
10,336.0	90.72	269.43	6,659.1	-300.9	-3,614.9	3,624.3	0.47	0.23	-0.41
10,431.0	89.28	268.81	6,659.1	-302.4	-3,709.9	3,719.3	1.65	-1.52	-0.65
10,525.0	89.83	268.57	6,659.9	-304.5	-3,803.8	3,813.2	0.64	0.59	-0.26
10,618.0	90.54	268.41	6,659.6	-307.0	-3,896.8	3,906.2	0.78	0.76	-0.17
10,713.0	91.79	268.50	6,657.6	-309.5	-3,991.8	4,001.2	1.32	1.32	0.09
10,805.0	90.90	269.98	6,655.5	-310.8	-4,083.7	4,093.1	1.88	-0.97	1.61
10,898.0	89.83	269.85	6,654.9	-310.9	-4,176.7	4,186.0	1.16	-1.15	-0.14
10,990.0	90.42	269.90	6,654.7	-311.1	-4,268.7	4,278.0	0.64	0.64	0.05
11,083.0	88.41	270.05	6,655.6	-311.1	-4,361.7	4,370.9	2.17	-2.16	0.16
11,176.0	89.36	270.09	6,657.4	-311.0	-4,454.7	4,463.8	1.02	1.02	0.04
11,269.0	90.97	270.20	6,657.2	-310.8	-4,547.7	4,556.7	1.74	1.73	0.12
11,362.0	89.30	270.18	6,656.9	-310.5	-4,640.7	4,649.6	1.80	-1.80	-0.02
11,456.0	89.73	269.87	6,657.7	-310.4	-4,734.7	4,743.5	0.56	0.46	-0.33
11,549.0	89.71	269.48	6,658.2	-311.0	-4,827.7	4,836.4	0.42	-0.02	-0.42
11,642.0	89.98	268.84	6,658.4	-312.3	-4,920.7	4,929.4	0.75	0.29	-0.69
11,734.0	90.61	268.71	6,658.0	-314.3	-5,012.6	5,021.4	0.70	0.68	-0.14
11,828.0	89.39	268.66	6,658.0	-316.5	-5,106.6	5,115.4	1.30	-1.30	-0.05
11,921.0	89.28	268.07	6,659.1	-319.1	-5,199.6	5,208.3	0.65	-0.12	-0.63
12,013.0	89.79	269.27	6,659.8	-321.2	-5,291.5	5,300.3	1.42	0.55	1.30

Company:	Noble Energy Inc.- Weld County, CO (Grid North)	Local Co-ordinate Reference:	Well Wells Ranch State A36-675
Project:	Sec.31-T6N-R63W	TVD Reference:	WELL @ 4685.0ft (H&P 326 RKB - 30')
Site:	Wells Ranch A36 Pad Sec.31-T6N-R63W	MD Reference:	WELL @ 4685.0ft (H&P 326 RKB - 30')
Well:	Wells Ranch State A36-675	North Reference:	Grid
Wellbore:	Wellbore #1	Survey Calculation Method:	Minimum Curvature
Design:	Wellbore #1	Database:	EDM 2003.21 Single User Db

Survey									
Measured Depth (ft)	Inclination (°)	Azimuth (°)	Vertical Depth (ft)	+N/-S (ft)	+E/-W (ft)	Vertical Section (ft)	Dogleg Rate (°/100ft)	Build Rate (°/100ft)	Turn Rate (°/100ft)
12,106.0	90.19	270.00	6,659.8	-321.8	-5,384.5	5,393.3	0.90	0.43	0.78
12,198.0	89.88	268.63	6,659.8	-322.9	-5,476.5	5,485.2	1.53	-0.34	-1.49
12,291.0	89.24	267.93	6,660.5	-325.7	-5,569.5	5,578.2	1.02	-0.69	-0.75
12,383.0	87.22	264.15	6,663.3	-332.1	-5,661.2	5,670.1	4.66	-2.20	-4.11
12,478.0	88.34	265.36	6,667.0	-340.8	-5,755.7	5,764.9	1.73	1.18	1.27
12,573.0	89.08	265.71	6,669.1	-348.1	-5,850.4	5,859.8	0.86	0.78	0.37
12,667.0	89.38	265.48	6,670.4	-355.4	-5,944.1	5,953.8	0.40	0.32	-0.24
12,762.0	89.15	264.79	6,671.6	-363.4	-6,038.8	6,048.7	0.77	-0.24	-0.73
12,857.0	89.31	264.89	6,672.9	-372.0	-6,133.4	6,143.6	0.20	0.17	0.11
12,952.0	88.64	266.31	6,674.6	-379.3	-6,228.1	6,238.5	1.65	-0.71	1.49
13,046.0	89.42	268.78	6,676.2	-383.3	-6,322.0	6,332.5	2.76	0.83	2.63
13,141.0	89.63	268.65	6,677.0	-385.4	-6,416.9	6,427.4	0.26	0.22	-0.14
13,235.0	90.19	268.20	6,677.1	-388.0	-6,510.9	6,521.4	0.76	0.60	-0.48
13,330.0	90.14	267.69	6,676.8	-391.4	-6,605.9	6,616.4	0.54	-0.05	-0.54
13,424.0	89.18	269.94	6,677.4	-393.3	-6,699.8	6,710.4	2.60	-1.02	2.39
13,518.0	89.30	269.76	6,678.6	-393.6	-6,793.8	6,804.3	0.23	0.13	-0.19
13,613.0	89.20	269.53	6,679.9	-394.2	-6,888.8	6,899.2	0.26	-0.11	-0.24
13,707.0	89.83	269.76	6,680.7	-394.8	-6,982.8	6,993.2	0.71	0.67	0.24
13,802.0	89.00	268.41	6,681.7	-396.3	-7,077.8	7,088.1	1.67	-0.87	-1.42
13,896.0	89.59	269.12	6,682.8	-398.3	-7,171.7	7,182.1	0.98	0.63	0.76
13,991.0	89.36	269.55	6,683.7	-399.4	-7,266.7	7,277.1	0.51	-0.24	0.45
14,085.0	90.57	270.63	6,683.7	-399.3	-7,360.7	7,371.0	1.73	1.29	1.15
14,180.0	91.13	270.60	6,682.3	-398.2	-7,455.7	7,465.8	0.59	0.59	-0.03
14,275.0	91.45	270.56	6,680.2	-397.3	-7,550.7	7,560.7	0.34	0.34	-0.04
14,369.0	92.02	270.64	6,677.3	-396.3	-7,644.6	7,654.5	0.61	0.61	0.09
14,464.0	90.28	270.51	6,675.4	-395.3	-7,739.6	7,749.4	1.84	-1.83	-0.14
14,558.0	91.04	270.30	6,674.4	-394.7	-7,833.6	7,843.2	0.84	0.81	-0.22
14,652.0	89.42	271.32	6,674.0	-393.3	-7,927.6	7,937.1	2.04	-1.72	1.09
14,747.0	90.22	271.67	6,674.3	-390.9	-8,022.6	8,031.9	0.92	0.84	0.37
14,841.0	91.12	271.76	6,673.2	-388.1	-8,116.5	8,125.6	0.96	0.96	0.10
14,936.0	88.67	271.46	6,673.4	-385.4	-8,211.5	8,220.4	2.60	-2.58	-0.32
15,030.0	89.31	271.30	6,675.0	-383.1	-8,305.4	8,314.2	0.70	0.68	-0.17
15,125.0	90.45	271.21	6,675.2	-381.0	-8,400.4	8,409.0	1.20	1.20	-0.09
15,220.0	91.57	271.11	6,673.5	-379.1	-8,495.4	8,503.8	1.18	1.18	-0.11
15,314.0	90.64	270.06	6,671.7	-378.2	-8,589.3	8,597.6	1.49	-0.99	-1.12
15,409.0	91.47	269.04	6,670.0	-378.9	-8,684.3	8,692.6	1.38	0.87	-1.07
15,503.0	90.30	268.96	6,668.5	-380.5	-8,778.3	8,786.5	1.25	-1.24	-0.09
15,598.0	88.84	268.48	6,669.2	-382.7	-8,873.3	8,881.5	1.62	-1.54	-0.51
15,693.0	88.61	267.85	6,671.3	-385.7	-8,968.2	8,976.5	0.71	-0.24	-0.66
15,788.0	88.68	268.16	6,673.6	-389.0	-9,063.1	9,071.4	0.33	0.07	0.33
15,883.0	88.81	268.39	6,675.7	-391.9	-9,158.0	9,166.4	0.28	0.14	0.24
15,978.0	90.15	268.79	6,676.5	-394.2	-9,253.0	9,261.4	1.47	1.41	0.42
16,073.0	91.11	269.17	6,675.5	-395.9	-9,348.0	9,356.4	1.09	1.01	0.40
16,168.0	92.14	268.94	6,672.8	-397.5	-9,442.9	9,451.3	1.11	1.08	-0.24
16,263.0	90.53	268.82	6,670.6	-399.3	-9,537.9	9,546.2	1.70	-1.69	-0.13
16,336.0	90.00	268.82	6,670.2	-400.8	-9,610.9	9,619.2	0.73	-0.73	0.00

Checked By: _____	Approved By: _____	Date: _____
-------------------	--------------------	-------------