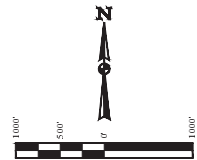


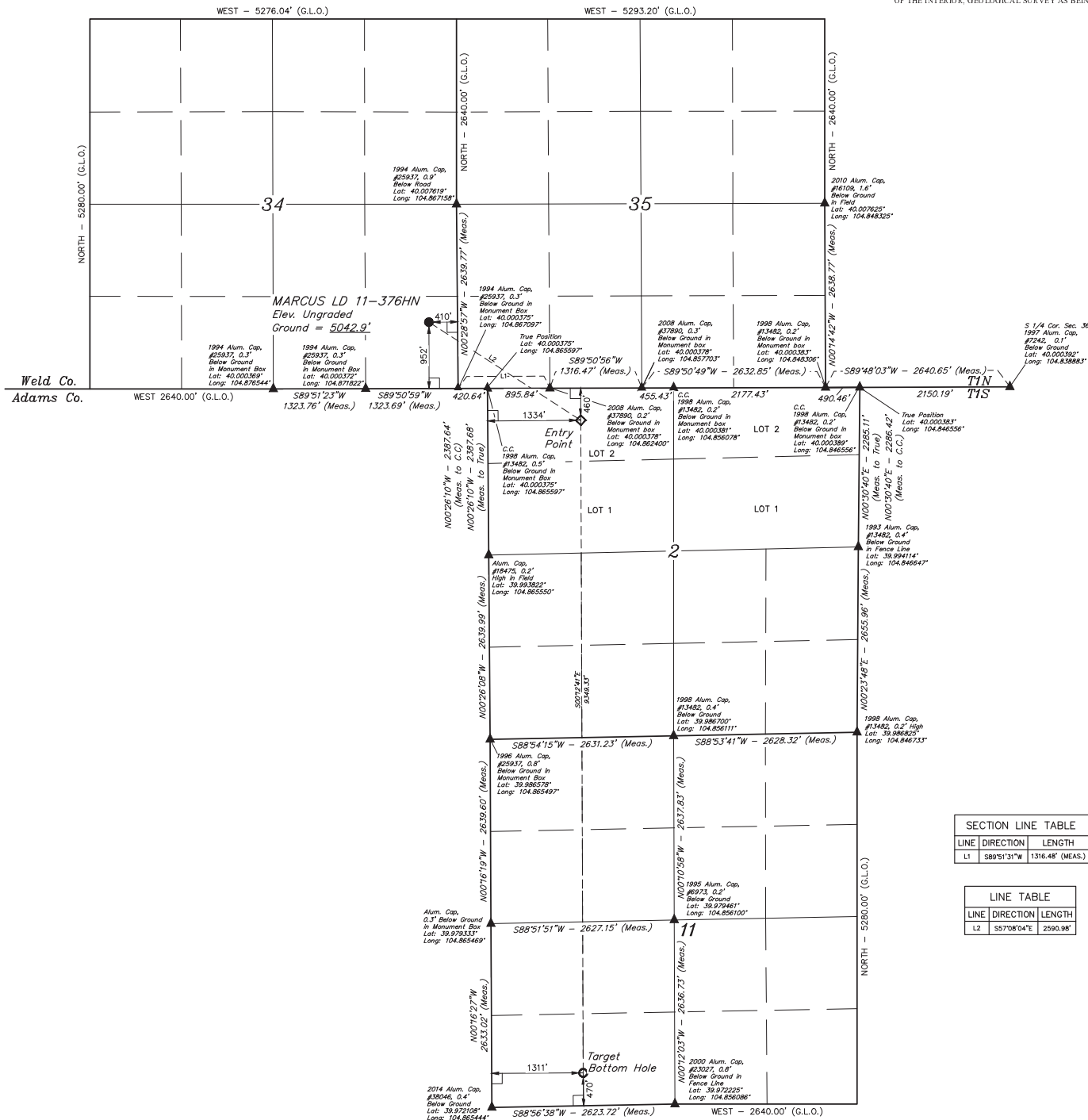
LEGEND:
 - 90° SYMBOL
 - PROPOSED WELLHEAD
 - ENTRY POINT
 - TARGET BOTTOM HOLE
 - SECTION CORNERS LOCATED

T1N, R67W, 6th P.M.



BASIS OF BEARINGS
 BASIS OF BEARINGS IS A G.P.S. OBSERVATION

BASIS OF ELEVATION
 BENCHMARK IR 53 5026 LOCATED IN THE SW 1/4 SE 1/4 OF SECTION 18, T1N, R68W, 6th P.M., TAKEN FROM 1988 PUBLISHED DATUM BY THE UNITED STATES DEPARTMENT OF THE INTERIOR, GEOLOGICAL SURVEY AS BEING 5028 FEET



| SECTION LINE TABLE | | |
|--------------------|-------------|------------------|
| LINE | DIRECTION | LENGTH |
| L1 | S89°51'31"W | 1316.48' (MEAS.) |

| LINE TABLE | | |
|------------|-------------|----------|
| LINE | DIRECTION | LENGTH |
| L2 | S57°08'04"E | 2590.96' |

THIS IS TO CERTIFY THAT THE ABOVE DESCRIBED SURVEY WAS MADE BY ME OR UNDER MY CLOSE PERSONAL SUPERVISION AND THAT THE SAME ARE TRUE AND CORRECT TO THE BEST OF MY KNOWLEDGE AND BELIEF.

[Signature]
 JARED CHRISTOPHER, J.C.
 REGISTERED LAND SURVEYOR
 REGISTRATION NO. 24233
 EXPIRATION DATE 12/31/2014

GREAT WESTERN OIL & GAS COMPANY
 MARCUS LD 11-376HN
 SE 1/4 SE 1/4, SECTION 34, T1N, R67W, 6th P.M.
 WELD COUNTY, COLORADO

WELLS, LLC
 Corporate Office • 85 South 200 East
 Vernal, UT 84078 • (435) 789-1817

PROP - L4

| NAD83 (TARGET BOTTOM HOLE) | NAD83 (ENTRY POINT) | NAD83 (SURFACE LOCATION) |
|---------------------------------------|---------------------------------------|---------------------------------------|
| LATITUDE = 39°58'24.44" (39.973456) | LATITUDE = 39°59'36.81" (39.99114) | LATITUDE = 40°00'07.51" (40.00296) |
| LONGITUDE = 104°51'38.78" (104.86072) | LONGITUDE = 104°51'38.98" (104.86082) | LONGITUDE = 104°52'06.30" (104.86858) |
| NAD83 (TARGET BOTTOM HOLE) | NAD83 (ENTRY POINT) | NAD83 (SURFACE LOCATION) |
| LATITUDE = 39°58'24.50" (39.97342) | LATITUDE = 39°59'36.87" (39.99131) | LATITUDE = 40°00'08.17" (40.00303) |
| LONGITUDE = 104°51'36.87" (104.86062) | LONGITUDE = 104°51'37.07" (104.8607) | LONGITUDE = 104°52'04.99" (104.86803) |



SURVEYED BY: JARED CHRISTOPHER, J.C. DATE: 11-20-14
 DRAWN BY: J.W. DATE DRAWN: 12-01-14
 SCALE: 1" = 1000'

WELL LOCATION PLAT