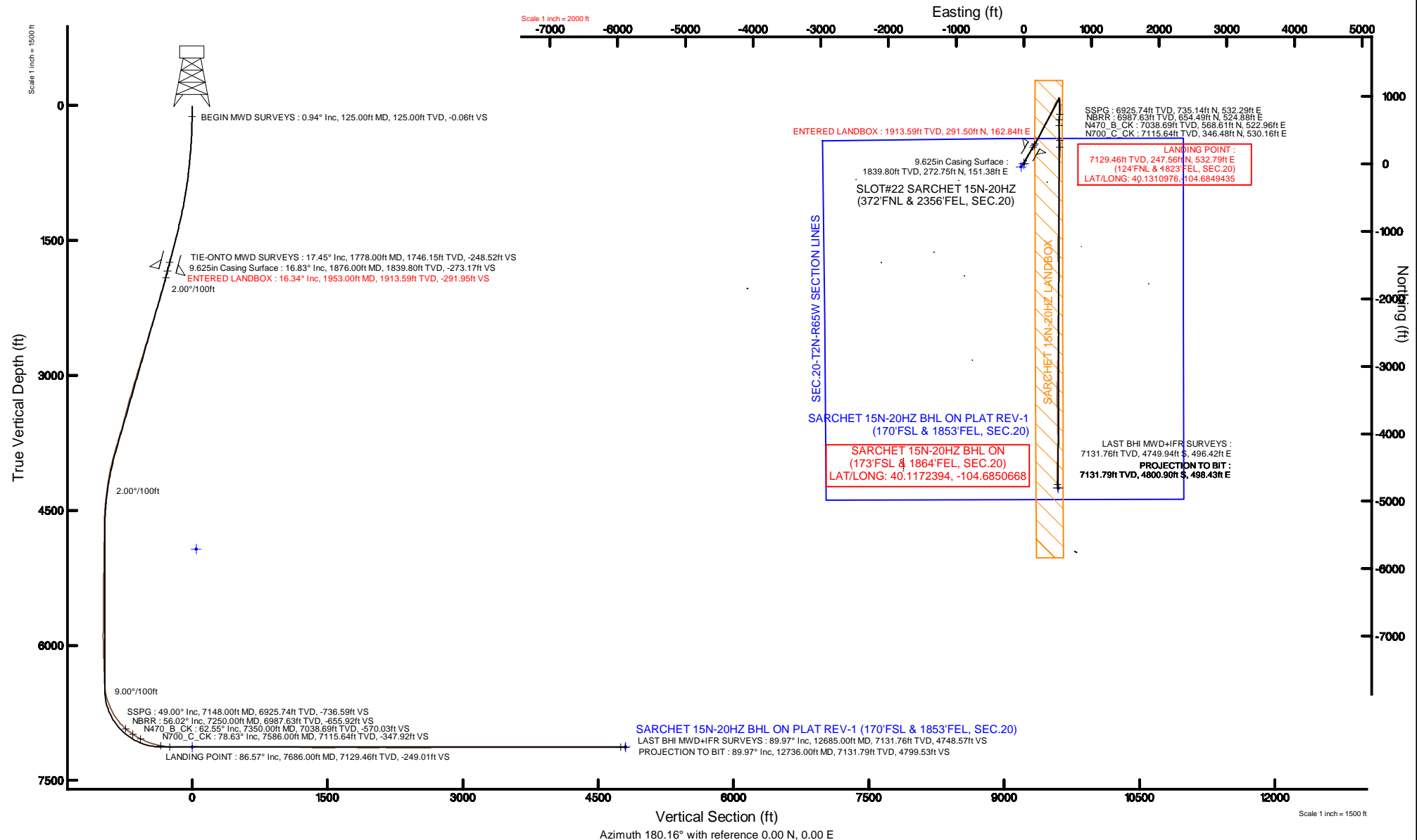


Location:	COLORADO	Slot:	SLOT#22 SARCHET 15N-20HZ (372'FNL & 2356'FEL, SEC.20)
Field:	WELD COUNTY (UTM/TRUE NORTH)	Well:	SARCHET 15N-20HZ
Facility:	SEC.20-T2N-R65W	Wellbore:	SARCHET 15N-20HZ PWB

Anadarko
Petroleum Corporation





Actual Wellpath Report

SARCHET 15N-20HZ AWP

Page 1 of 6



REFERENCE WELLPATH IDENTIFICATION

Operator	KERR-MCGEE OIL & GAS ONSHORE LP (WA)	Slot	SLOT#22 SARCHET 15N-20HZ (372'FNL & 2356'FEL, SEC.20)
Area	COLORADO	Well	SARCHET 15N-20HZ
Field	WELD COUNTY (UTM/TRUE NORTH)	Wellbore	SARCHET 15N-20HZ AWB <12736>
Facility	SEC.20-T2N-R65W		

REPORT SETUP INFORMATION

Projection System	NAD83 / UTM Zone 13 North, US feet	Software System	WellArchitect® 4.0.0
North Reference	True	User	Amarcar
Scale	0.999609	Report Generated	23/Sep/2015 at 12:02
Convergence at slot	0.20° East	Database/Source file	KERR MCGEE UTM/SARCHET_15N-20HZ_AWB__12736_.xml

WELLPATH LOCATION

	Local coordinates		Grid coordinates		Geographic coordinates	
	North[ft]	East[ft]	Easting[US ft]	Northing[US ft]	Latitude	Longitude
Slot Location	4488.28	1778.83	1727947.94	14574378.67	40°07'49.505"N	104°41'12.656"W
Facility Reference Pt			1726185.29	14569886.05	40°07'05.152"N	104°41'35.557"W
Field Reference Pt			1698235.31	14552047.82	40°04'09.600"N	104°47'36.000"W

WELLPATH DATUM

Calculation method	Minimum curvature	XTREME 24 (16'KB) (RKB) to Facility Vertical Datum	4930.00ft
Horizontal Reference Pt	Slot	XTREME 24 (16'KB) (RKB) to Mean Sea Level	4930.00ft
Vertical Reference Pt	XTREME 24 (16'KB) (RKB)	XTREME 24 (16'KB) (RKB) to Mud Line at Slot (SLOT#22 SARCHET 15N-20HZ (372'FNL & 2356'FEL, SEC.20))	4930.00ft
MD Reference Pt	XTREME 24 (16'KB) (RKB)	Section Origin	N 0.00, E 0.00 ft
Field Vertical Reference	Mean Sea Level	Section Azimuth	180.16°

REFERENCE WELLPATH IDENTIFICATION			
Operator	KERR-MCGEE OIL & GAS ONSHORE LP (WA)	Slot	SLOT#22 SARCHET 15N-20HZ (372°FNL & 2356°FEL, SEC.20)
Area	COLORADO	Well	SARCHET 15N-20HZ
Field	WELD COUNTY (UTM/TRUE NORTH)	Wellbore	SARCHET 15N-20HZ AWB <12736>
Facility	SEC.20-T2N-R65W		

WELLPATH DATA (135 stations) † = interpolated/extrapolated station										
MD [ft]	Inclination [°]	Azimuth [°]	TVD [ft]	Vert Sect [ft]	North [ft]	East [ft]	Latitude	Longitude	DLS [°/100ft]	Comments
0.00†	0.000	274.180	0.00	0.00	0.00	0.00	40°07'49.505"N	104°41'12.656"W	0.00	
16.00	0.000	274.180	16.00	0.00	0.00	0.00	40°07'49.505"N	104°41'12.656"W	0.00	
125.00	0.940	274.180	125.00	-0.06	0.07	-0.89	40°07'49.506"N	104°41'12.667"W	0.86	BEGIN MWD SURVEYS
214.00	1.440	353.310	213.98	-1.22	1.23	-1.75	40°07'49.517"N	104°41'12.679"W	1.76	
304.00	2.330	12.720	303.93	-4.13	4.14	-1.48	40°07'49.546"N	104°41'12.675"W	1.20	
382.00	3.420	21.090	381.83	-7.85	7.85	-0.29	40°07'49.583"N	104°41'12.660"W	1.49	
472.00	4.840	26.970	471.60	-13.75	13.74	2.40	40°07'49.641"N	104°41'12.625"W	1.64	
562.00	6.060	29.900	561.19	-21.26	21.25	6.49	40°07'49.715"N	104°41'12.573"W	1.39	
652.00	6.980	30.440	650.61	-30.11	30.08	11.62	40°07'49.802"N	104°41'12.506"W	1.02	
743.00	7.030	31.270	740.93	-39.65	39.61	17.32	40°07'49.896"N	104°41'12.433"W	0.12	
833.00	8.490	27.740	830.10	-50.26	50.19	23.27	40°07'50.001"N	104°41'12.356"W	1.71	
923.00	9.930	27.410	918.94	-63.04	62.96	29.93	40°07'50.127"N	104°41'12.271"W	1.60	
1013.00	10.720	29.070	1007.48	-77.27	77.17	37.57	40°07'50.268"N	104°41'12.172"W	0.94	
1103.00	12.180	30.090	1095.69	-92.83	92.70	46.40	40°07'50.421"N	104°41'12.059"W	1.64	
1238.00	14.410	31.450	1227.06	-119.53	119.36	62.31	40°07'50.684"N	104°41'11.854"W	1.67	
1328.00	15.170	28.610	1314.08	-139.45	139.25	73.79	40°07'50.881"N	104°41'11.706"W	1.17	
1418.00	15.190	29.120	1400.94	-160.12	159.89	85.17	40°07'51.085"N	104°41'11.560"W	0.15	
1508.00	15.560	29.020	1487.72	-181.01	180.74	96.76	40°07'51.291"N	104°41'11.410"W	0.41	
1598.00	16.530	30.370	1574.21	-202.64	202.35	109.09	40°07'51.505"N	104°41'11.252"W	1.15	
1688.00	17.430	30.360	1660.29	-225.36	225.02	122.37	40°07'51.729"N	104°41'11.081"W	1.00	
1778.00	17.450	31.620	1746.15	-248.52	248.15	136.26	40°07'51.957"N	104°41'10.902"W	0.42	TIE-ONTO MWD SURVEYS
1953.00	16.340	31.390	1913.59	-291.95	291.50	162.84	40°07'52.386"N	104°41'10.560"W	0.64	ENTERED LANDBOX
2048.00	16.930	33.980	2004.62	-314.86	314.38	177.53	40°07'52.612"N	104°41'10.370"W	1.00	
2143.00	18.390	29.090	2095.14	-339.47	338.95	192.55	40°07'52.855"N	104°41'10.177"W	2.19	
2237.00	19.610	29.370	2184.02	-366.22	365.66	207.50	40°07'53.118"N	104°41'09.985"W	1.30	
2332.00	18.870	28.490	2273.72	-393.66	393.05	222.64	40°07'53.389"N	104°41'09.790"W	0.84	
2427.00	19.260	25.650	2363.51	-421.32	420.68	236.76	40°07'53.662"N	104°41'09.608"W	1.06	
2522.00	18.490	23.570	2453.40	-449.29	448.61	249.56	40°07'53.938"N	104°41'09.443"W	1.08	
2616.00	18.360	24.200	2542.58	-476.49	475.78	261.59	40°07'54.207"N	104°41'09.288"W	0.25	
2711.00	18.010	25.200	2632.83	-503.46	502.71	273.98	40°07'54.473"N	104°41'09.129"W	0.49	
2806.00	18.050	24.680	2723.17	-530.15	529.37	286.38	40°07'54.736"N	104°41'08.969"W	0.17	
2900.00	17.770	27.900	2812.62	-556.10	555.28	299.17	40°07'54.992"N	104°41'08.804"W	1.09	
2995.00	19.840	29.410	2902.54	-582.99	582.14	313.87	40°07'55.258"N	104°41'08.615"W	2.24	
3089.00	18.820	28.930	2991.24	-610.20	609.31	329.04	40°07'55.526"N	104°41'08.420"W	1.10	
3184.00	18.720	28.400	3081.19	-637.06	636.13	343.70	40°07'55.791"N	104°41'08.231"W	0.21	
3279.00	18.100	26.000	3171.33	-663.77	662.80	357.42	40°07'56.055"N	104°41'08.054"W	1.03	
3374.00	17.330	25.460	3261.82	-689.85	688.84	369.97	40°07'56.312"N	104°41'07.893"W	0.83	
3468.00	16.990	29.250	3351.64	-714.51	713.47	382.70	40°07'56.556"N	104°41'07.729"W	1.24	
3563.00	16.910	29.210	3442.51	-738.71	737.64	396.23	40°07'56.794"N	104°41'07.555"W	0.09	
3658.00	17.100	25.980	3533.36	-763.36	762.25	409.09	40°07'57.038"N	104°41'07.389"W	1.01	
3752.00	17.530	26.130	3623.10	-788.53	787.38	421.38	40°07'57.286"N	104°41'07.231"W	0.46	
3847.00	18.470	25.110	3713.45	-815.04	813.86	434.06	40°07'57.548"N	104°41'07.068"W	1.04	
3941.00	18.100	24.590	3802.71	-841.83	840.62	446.46	40°07'57.812"N	104°41'06.908"W	0.43	
4036.00	16.480	18.230	3893.42	-868.08	866.84	456.82	40°07'58.071"N	104°41'06.775"W	2.62	
4131.00	14.440	27.410	3984.99	-891.42	890.16	466.49	40°07'58.302"N	104°41'06.650"W	3.35	

REFERENCE WELLPATH IDENTIFICATION

Operator	KERR-MCGEE OIL & GAS ONSHORE LP (WA)	Slot	SLOT#22 SARCHET 15N-20HZ (372°FNL & 2356°FEL, SEC.20)
Area	COLORADO	Well	SARCHET 15N-20HZ
Field	WELD COUNTY (UTM/TRUE NORTH)	Wellbore	SARCHET 15N-20HZ AWP <12736>
Facility	SEC.20-T2N-R65W		

WELLPATH DATA (135 stations) † = interpolated/extrapolated station

MD [ft]	Inclination [°]	Azimuth [°]	TVD [ft]	Vert Sect [ft]	North [ft]	East [ft]	Latitude	Longitude	DLS [°/100ft]	Comments
4226.00	13.400	35.720	4077.21	-910.91	909.61	478.37	40°07'58.494"N	104°41'06.497"W	2.37	
4321.00	11.960	40.630	4169.89	-927.36	926.02	491.21	40°07'58.656"N	104°41'06.332"W	1.89	
4415.00	9.030	36.960	4262.31	-940.67	939.31	501.99	40°07'58.787"N	104°41'06.193"W	3.20	
4510.00	8.040	28.660	4356.26	-952.48	951.10	509.66	40°07'58.904"N	104°41'06.094"W	1.66	
4604.00	6.300	34.530	4449.52	-962.52	961.12	515.73	40°07'59.003"N	104°41'06.016"W	2.01	
4699.00	3.460	44.630	4544.17	-968.87	967.45	520.70	40°07'59.065"N	104°41'05.952"W	3.11	
4793.00	1.140	51.300	4638.09	-971.48	970.06	523.42	40°07'59.091"N	104°41'05.917"W	2.48	
4888.00	0.870	36.650	4733.07	-972.65	971.23	524.59	40°07'59.103"N	104°41'05.902"W	0.39	
5078.00	1.990	299.310	4923.03	-975.42	974.00	522.58	40°07'59.130"N	104°41'05.928"W	1.20	
5172.00	3.220	287.600	5016.93	-977.00	975.60	518.64	40°07'59.146"N	104°41'05.979"W	1.42	
5267.00	1.260	309.030	5111.86	-978.46	977.06	515.28	40°07'59.160"N	104°41'06.022"W	2.21	
5361.00	0.770	61.980	5205.85	-979.41	978.01	515.04	40°07'59.170"N	104°41'06.025"W	1.82	
5645.00	0.140	25.820	5489.84	-980.62	979.22	516.87	40°07'59.182"N	104°41'06.001"W	0.23	
5930.00	0.990	26.200	5774.82	-983.15	981.74	518.11	40°07'59.207"N	104°41'05.985"W	0.30	
6024.00	1.680	72.170	5868.80	-984.30	982.89	519.78	40°07'59.218"N	104°41'05.964"W	1.30	
6119.00	1.100	152.960	5963.78	-983.92	982.50	521.52	40°07'59.214"N	104°41'05.942"W	1.95	
6308.00	1.990	163.670	6152.71	-979.16	977.74	523.27	40°07'59.167"N	104°41'05.919"W	0.49	
6403.00	2.140	156.620	6247.64	-975.95	974.53	524.44	40°07'59.135"N	104°41'05.904"W	0.31	
6498.00	2.360	158.260	6342.57	-972.51	971.08	525.87	40°07'59.101"N	104°41'05.886"W	0.24	
6593.00	2.620	153.630	6437.48	-968.75	967.32	527.55	40°07'59.064"N	104°41'05.864"W	0.35	
6687.00	11.700	168.790	6530.66	-957.46	956.02	530.37	40°07'58.952"N	104°41'05.828"W	9.78	
6782.00	18.770	177.700	6622.27	-932.71	931.27	532.86	40°07'58.708"N	104°41'05.796"W	7.82	
6877.00	25.310	173.180	6710.29	-897.25	895.79	535.89	40°07'58.357"N	104°41'05.757"W	7.11	
6971.00	32.610	178.620	6792.49	-851.91	850.45	538.89	40°07'57.909"N	104°41'05.718"W	8.25	
7066.00	41.700	183.560	6868.14	-794.65	793.19	537.54	40°07'57.343"N	104°41'05.735"W	10.06	
7148.00†	48.996	186.585	6925.74	-736.59	735.14	532.29	40°07'56.770"N	104°41'05.803"W	9.27	SSPG
7160.00	50.070	186.970	6933.53	-727.52	726.08	531.21	40°07'56.680"N	104°41'05.817"W	9.27	
7250.00†	56.017	183.289	6987.63	-655.92	654.49	524.88	40°07'55.973"N	104°41'05.898"W	7.37	NBRR
7255.00	56.350	183.100	6990.41	-651.77	650.35	524.64	40°07'55.932"N	104°41'05.901"W	7.37	
7350.00	62.550	179.380	7038.69	-570.03	568.61	522.96	40°07'55.124"N	104°41'05.923"W	7.34	N470_B_CK
7445.00	69.420	177.540	7077.33	-483.35	481.92	525.33	40°07'54.267"N	104°41'05.893"W	7.44	
7540.00	76.010	178.170	7105.54	-392.77	391.33	528.71	40°07'53.372"N	104°41'05.849"W	6.97	
7586.00†	78.630	178.121	7115.64	-347.92	346.48	530.16	40°07'52.929"N	104°41'05.830"W	5.70	N700_C_CK
7635.00	81.420	178.070	7124.12	-299.70	298.25	531.77	40°07'52.452"N	104°41'05.810"W	5.70	
7686.00†	86.573	179.618	7129.46	-249.01	247.56	532.79	40°07'51.951"N	104°41'05.797"W	10.55	LANDING POINT
7729.00	90.920	180.910	7130.40	-206.03	204.58	532.59	40°07'51.527"N	104°41'05.799"W	10.55	
7824.00	92.070	181.120	7127.92	-111.07	109.63	530.91	40°07'50.588"N	104°41'05.821"W	1.23	
7918.00	90.680	180.420	7125.66	-17.11	15.67	529.64	40°07'49.660"N	104°41'05.837"W	1.66	
8013.00	89.420	181.260	7125.58	77.88	-79.32	528.25	40°07'48.721"N	104°41'05.855"W	1.59	
8108.00	90.460	181.720	7125.68	172.85	-174.29	525.78	40°07'47.783"N	104°41'05.887"W	1.20	
8202.00	88.710	181.300	7126.36	266.82	-268.25	523.30	40°07'46.854"N	104°41'05.919"W	1.91	
8297.00	89.260	180.860	7128.04	361.79	-363.21	521.51	40°07'45.916"N	104°41'05.942"W	0.74	
8392.00	89.660	180.690	7128.94	456.78	-458.20	520.23	40°07'44.977"N	104°41'05.959"W	0.46	
8486.00	91.230	180.180	7128.21	550.78	-552.19	519.51	40°07'44.048"N	104°41'05.968"W	1.76	
8581.00	91.110	180.780	7126.27	645.75	-647.17	518.72	40°07'43.110"N	104°41'05.978"W	0.64	

REFERENCE WELLPATH IDENTIFICATION			
Operator	KERR-MCGEE OIL & GAS ONSHORE LP (WA)	Slot	SLOT#22 SARCHET 15N-20HZ (372°FNL & 2356°FEL, SEC.20)
Area	COLORADO	Well	SARCHET 15N-20HZ
Field	WELD COUNTY (UTM/TRUE NORTH)	Wellbore	SARCHET 15N-20HZ AWB <12736>
Facility	SEC.20-T2N-R65W		

WELLPATH DATA (135 stations)										
MD [ft]	Inclination [°]	Azimuth [°]	TVD [ft]	Vert Sect [ft]	North [ft]	East [ft]	Latitude	Longitude	DLS [°/100ft]	Comments
8676.00	88.670	180.960	7126.45	740.74	-742.15	517.28	40°07'42.171"N	104°41'05.997"W	2.58	
8771.00	89.080	180.700	7128.32	835.71	-837.12	515.90	40°07'41.232"N	104°41'06.014"W	0.51	
8866.00	90.860	181.740	7128.37	930.69	-932.10	513.88	40°07'40.294"N	104°41'06.040"W	2.17	
8961.00	90.590	181.210	7127.16	1025.66	-1027.06	511.43	40°07'39.355"N	104°41'06.072"W	0.63	
9056.00	88.030	180.380	7128.31	1120.64	-1122.03	510.12	40°07'38.417"N	104°41'06.089"W	2.83	
9150.00	88.030	180.000	7131.54	1214.58	-1215.97	509.80	40°07'37.489"N	104°41'06.093"W	0.40	
9245.00	88.180	180.040	7134.68	1309.53	-1310.92	509.77	40°07'36.550"N	104°41'06.093"W	0.16	
9340.00	89.450	179.420	7136.64	1404.50	-1405.90	510.22	40°07'35.612"N	104°41'06.088"W	1.49	
9435.00	90.590	179.400	7136.61	1499.49	-1500.89	511.20	40°07'34.673"N	104°41'06.075"W	1.20	
9529.00	91.110	179.330	7135.22	1593.48	-1594.88	512.24	40°07'33.744"N	104°41'06.062"W	0.56	
9624.00	89.320	178.570	7134.86	1688.45	-1689.85	513.98	40°07'32.806"N	104°41'06.039"W	2.05	
9719.00	90.120	179.150	7135.32	1783.42	-1784.83	515.87	40°07'31.867"N	104°41'06.015"W	1.04	
9814.00	89.320	180.430	7135.79	1878.42	-1879.83	516.22	40°07'30.928"N	104°41'06.011"W	1.59	
9908.00	90.120	179.400	7136.25	1972.41	-1973.83	516.36	40°07'29.999"N	104°41'06.009"W	1.39	
10003.00	90.710	179.640	7135.56	2067.40	-2068.82	517.15	40°07'29.061"N	104°41'05.999"W	0.67	
10098.00	89.350	181.980	7135.51	2162.39	-2163.80	515.81	40°07'28.122"N	104°41'06.016"W	2.85	
10192.00	89.660	184.660	7136.32	2256.23	-2257.63	510.37	40°07'27.195"N	104°41'06.086"W	2.87	
10287.00	89.570	179.420	7136.96	2351.15	-2352.54	506.99	40°07'26.257"N	104°41'06.130"W	5.52	
10381.00	89.230	177.820	7137.95	2445.10	-2446.50	509.25	40°07'25.328"N	104°41'06.100"W	1.74	
10476.00	90.920	180.330	7137.82	2540.08	-2541.48	510.78	40°07'24.390"N	104°41'06.081"W	3.19	
10570.00	91.780	180.520	7135.61	2634.05	-2635.45	510.09	40°07'23.461"N	104°41'06.090"W	0.94	
10665.00	91.200	181.280	7133.14	2729.01	-2730.40	508.59	40°07'22.523"N	104°41'06.109"W	1.01	
10760.00	90.220	181.660	7131.96	2823.97	-2825.36	506.16	40°07'21.584"N	104°41'06.140"W	1.11	
10855.00	89.940	180.960	7131.83	2918.95	-2920.34	503.99	40°07'20.646"N	104°41'06.168"W	0.79	
10949.00	89.750	181.480	7132.08	3012.94	-3014.31	501.98	40°07'19.717"N	104°41'06.194"W	0.59	
11044.00	89.350	181.210	7132.83	3107.91	-3109.29	499.75	40°07'18.779"N	104°41'06.223"W	0.51	
11139.00	90.490	181.030	7132.96	3202.90	-3204.27	497.90	40°07'17.840"N	104°41'06.247"W	1.21	
11234.00	91.140	181.030	7131.61	3297.88	-3299.24	496.19	40°07'16.902"N	104°41'06.269"W	0.68	
11328.00	89.660	179.760	7130.95	3391.87	-3393.23	495.54	40°07'15.973"N	104°41'06.277"W	2.07	
11422.00	90.620	180.050	7130.72	3485.87	-3487.23	495.70	40°07'15.044"N	104°41'06.275"W	1.07	
11517.00	89.110	178.850	7130.95	3580.85	-3582.22	496.61	40°07'14.105"N	104°41'06.263"W	2.03	
11612.00	89.320	178.200	7132.25	3675.81	-3677.18	499.05	40°07'13.167"N	104°41'06.232"W	0.72	
11706.00	90.650	179.140	7132.27	3769.77	-3771.15	501.24	40°07'12.238"N	104°41'06.204"W	1.73	
11801.00	89.750	179.430	7131.94	3864.76	-3866.14	502.42	40°07'11.299"N	104°41'06.189"W	1.00	
11896.00	90.650	179.270	7131.61	3959.75	-3961.13	503.50	40°07'10.361"N	104°41'06.175"W	0.96	
11991.00	89.690	179.260	7131.33	4054.74	-4056.12	504.72	40°07'09.422"N	104°41'06.159"W	1.01	
12085.00	90.830	182.190	7130.90	4148.72	-4150.10	503.53	40°07'08.493"N	104°41'06.175"W	3.34	
12180.00	89.020	181.210	7131.03	4243.68	-4245.06	500.71	40°07'07.555"N	104°41'06.211"W	2.17	
12275.00	89.720	181.090	7132.07	4338.66	-4340.03	498.80	40°07'06.616"N	104°41'06.235"W	0.75	
12370.00	89.940	181.470	7132.35	4433.64	-4435.01	496.68	40°07'05.678"N	104°41'06.263"W	0.46	
12464.00	90.220	181.030	7132.22	4527.62	-4528.98	494.63	40°07'04.749"N	104°41'06.289"W	0.55	
12559.00	90.150	180.050	7131.91	4622.62	-4623.98	493.74	40°07'03.810"N	104°41'06.301"W	1.03	
12654.00	90.030	178.080	7131.76	4717.60	-4718.96	495.29	40°07'02.872"N	104°41'06.281"W	2.08	
12685.00	89.970	177.740	7131.76	4748.57	-4749.94	496.42	40°07'02.566"N	104°41'06.266"W	1.11	LAST BHI MWD+IFR SURVEYS
12736.00	89.970	177.740	7131.79	4799.53	-4800.90	498.43	40°07'02.062"N	104°41'06.240"W	0.00	PROJECTION TO BIT



Actual Wellpath Report

SARCHET 15N-20HZ AWP

Page 5 of 6



REFERENCE WELLPATH IDENTIFICATION

Operator	KERR-MCGEE OIL & GAS ONSHORE LP (WA)	Slot	SLOT#22 SARCHET 15N-20HZ (372'FNL & 2356'FEL, SEC.20)
Area	COLORADO	Well	SARCHET 15N-20HZ
Field	WELD COUNTY (UTM/TRUE NORTH)	Wellbore	SARCHET 15N-20HZ AWB <12736>
Facility	SEC.20-T2N-R65W		

HOLE & CASING SECTIONS - Ref Wellbore: SARCHET 15N-20HZ AWB <12736> Ref Wellpath: SARCHET 15N-20HZ AWP

String/Diameter	Start MD [ft]	End MD [ft]	Interval [ft]	Start TVD [ft]	End TVD [ft]	Start N/S [ft]	Start E/W [ft]	End N/S [ft]	End E/W [ft]
13.5in Open Hole	16.00	1887.00	1871.00	16.00	1850.33	0.00	0.00	275.46	153.04
9.625in Casing Surface	16.00	1876.00	1860.00	16.00	1839.80	0.00	0.00	272.75	151.38
7.875in Open Hole	1887.00	12736.00	10849.00	1850.33	7131.79	275.46	153.04	-4800.90	498.43

TARGETS

Name	TVD [ft]	North [ft]	East [ft]	Grid East [US ft]	Grid North [US ft]	Latitude	Longitude	Shape
SEC.20-T2N-R65W SECTION LINES	4930.00	-44.10	-40.58	1727907.53	14574334.44	40°07'49.069"N	104°41'13.178"W	polygon
SARCHET 15N-20HZ BHL ON PLAT REV-1 (170'FSL & 1853'FEL, SEC.20)	7130.00	-4804.33	509.02	1728473.67	14569578.05	40°07'02.028"N	104°41'06.104"W	point
SARCHET 15N-20HZ LANDBOX	7130.00	-0.02	-0.03	1727947.91	14574378.65	40°07'49.505"N	104°41'12.656"W	polygon

WELLPATH COMPOSITION - Ref Wellbore: SARCHET 15N-20HZ AWB <12736> Ref Wellpath: SARCHET 15N-20HZ AWP

Start MD [ft]	End MD [ft]	Positional Uncertainty Model	Log Name/Comment	Wellbore
16.00	1778.00	Custom APC_ISCWSA REV 2 MWD	SDI MWD SURVEYS 13.5" <125-1778>	SARCHET 15N-20HZ AWB <12736>
1778.00	12685.00	Custom APC_ISCWSA REV 2 MWD+IFR1+SC (approximation)	BHI MWD+IFR SURVEYS 7.875" <1953-12685>	SARCHET 15N-20HZ AWB <12736>
12685.00	12736.00	Blind Drilling (std)	Projection to bit	SARCHET 15N-20HZ AWB <12736>

REFERENCE WELLPATH IDENTIFICATION

Operator	KERR-MCGEE OIL & GAS ONSHORE LP (WA)	Slot	SLOT#22 SARCHET 15N-20HZ (372'FNL & 2356'FEL, SEC.20)
Area	COLORADO	Well	SARCHET 15N-20HZ
Field	WELD COUNTY (UTM/TRUE NORTH)	Wellbore	SARCHET 15N-20HZ AWB <12736>
Facility	SEC.20-T2N-R65W		

WELLPATH COMMENTS

MD [ft]	Inclination [°]	Azimuth [°]	TVD [ft]	Comment
125.00	0.940	274.180	125.00	BEGIN MWD SURVEYS
1778.00	17.450	31.620	1746.15	TIE-ONTO MWD SURVEYS
1953.00	16.340	31.390	1913.59	ENTERED LANDBOX
7148.00	48.996	186.585	6925.74	SSPG
7250.00	56.017	183.289	6987.63	NBRR
7350.00	62.550	179.380	7038.69	N470_B_CK
7586.00	78.630	178.121	7115.64	N700_C_CK
7686.00	86.573	179.618	7129.46	LANDING POINT
12685.00	89.970	177.740	7131.76	LAST BHI MWD+IFR SURVEYS
12736.00	89.970	177.740	7131.79	PROJECTION TO BIT