



part of Baker Hughes. Unless other contract terms have been agreed to by the parties, each party's liabilities and

## Log Run Summary

Run No	Bit Run No.	Bit Size (in)	Bit Type	Bit Gauge Length (in)	Assembly Type	Logged Interval		Bit Depth Interval		Date / Time		Circ. Hours (h)
						Top	Bottom	From	To	Start Logging	End Logging	
						(ft)	(ft)	(ft)	(ft)			
1	1	7.875	PDC	2.00	Motor	1841.52	12693.33	1887.00	12738.81	2015-09-11 02:45	2015-09-13 00:50	40.42

## Crew

Name	Arrive Wellsite	Depart Wellsite	Name	Arrive Wellsite	Depart Wellsite	Name	Arrive Wellsite	Depart Wellsite
Adam Harris	2015-09-10	2015-09-13	Jason Cross	2015-09-10	2015-09-13	Marcus Boucher	2015-09-10	2015-09-13
Nicholas Gerard	2015-09-10	2015-09-13						

## Equipment and Service Data

Run No.	Tool	Serial Number	Measurement	Sensor Offset (ft)	Bit Offset (ft)	Max O.D. (in)	Min I.D. (in)
1	NaviGamma	13629341	Gamma (single)	14.45	45.48	6.625	3.500
1	NaviGamma	13629341	Directional (mag)	17.86	48.89	6.625	3.500
1	NaviGamma	13629341	VSS	17.86	48.89	6.625	3.500

## Service and Tool Mnemonics

Mnemonic	Name	Description
GAM	NaviGamma	Probe Based Gamma Module, NaviTrak Platform

## Comments

- 1 Baker Hughes run 1 utilized a 6.5 inch NaviGamma (Directional and Gamma Ray) tool ran behind an 7.875 inch bit with a steerable assembly from 1887 to 12736 feet MD (1850 to 7132 feet TVD).
- 2 A sliding indicator is shown on the left side of track 1 as a heavy line. The indicator has been shifted to the Gamma Ray sensor offset to correspond with Gamma Ray data acquired while sliding.

## Remarks

Number	Measured Depth (ft)	Hole Section (in)	Run No.	Remark
--------	---------------------------	-------------------------	------------	--------

1	6600.00	7.875	1	The interval from 16 to 6600 feet MD (16 to 6444 feet TVD) was not logged due to directional only services provided in the vertical.
2	12736.00	7.875	1	The interval from 12693 to 12736 feet MD (7132 feet TVD) has no GRAX, GRIX or GRTX due to the Gamma Ray sensor offset to bit.

Curve Mnemonics

Presented Curves	Description	Units
ROPA	Depth Averaged ROP 3 ft Average	ft/h
GRAX	Gamma Ray - Apparent 0.5 ft Average	API
GRIX	Gamma Ray - Data Point Indicator	unitless
GRTX	Gamma Time Since Drilled	min
GRSI	Sliding Indicator Flag	unitless
TCDX	Downhole Temperature	degF
TVD	True Vertical Depth	ft
WOBA	Weight On Bit, Average 1 ft Average	klb



Company

Well

Interval

Created

Anadarko

SARCHET 15N-20HZ

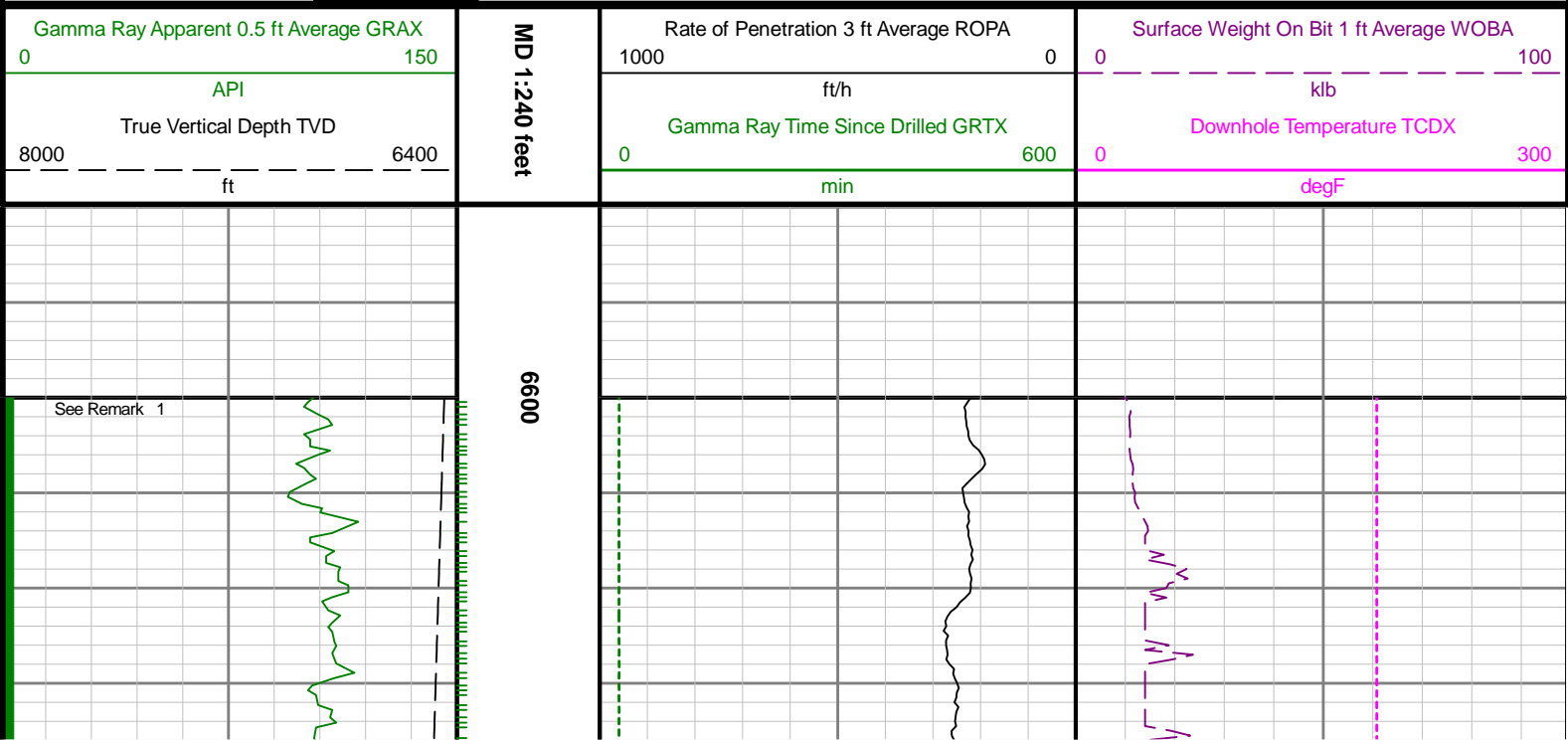
Date From: 2015-09-10 18:00

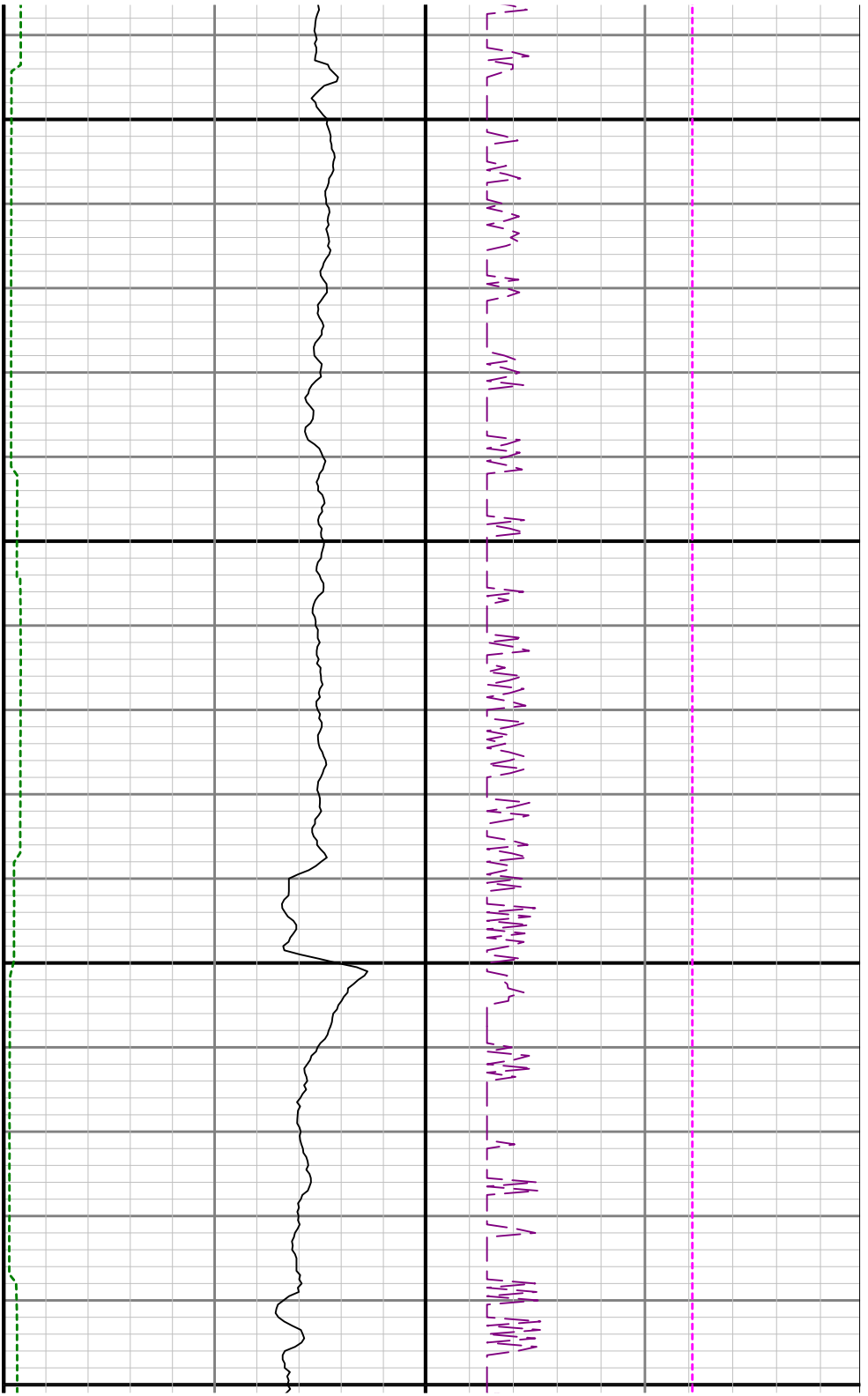
Date To: 2015-09-13 01:50

2015-09-13 02:26

Top: 6600.00

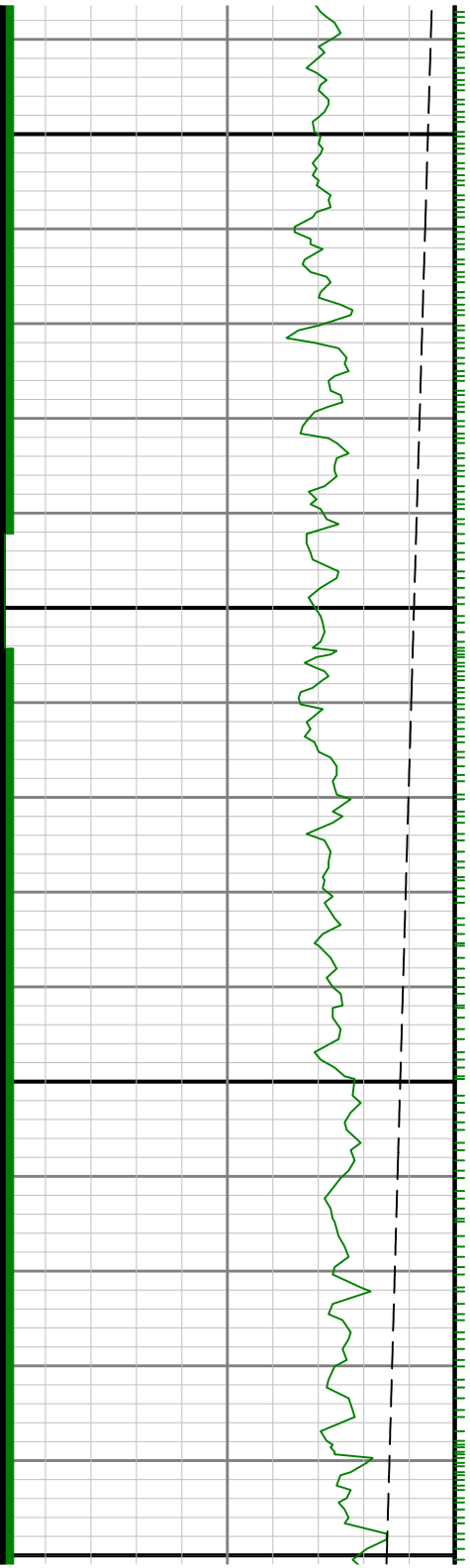
Bottom: 12693.00

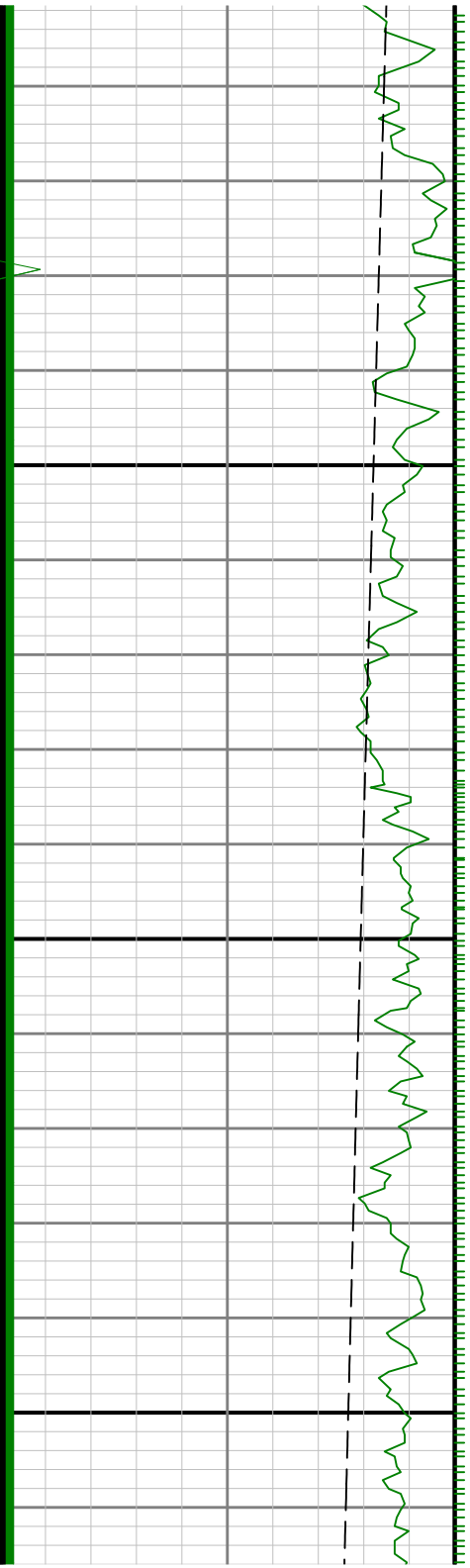




6700

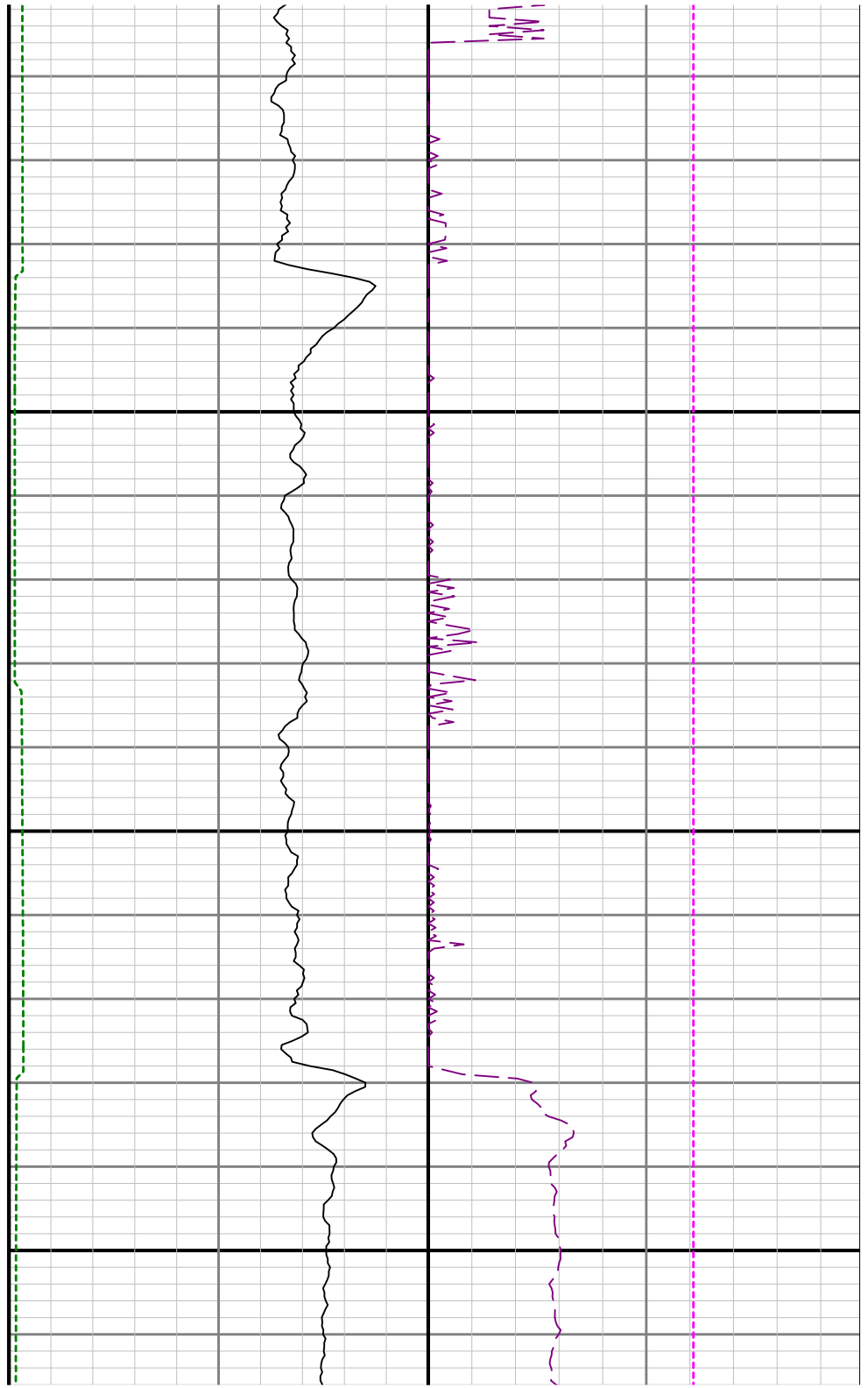
689

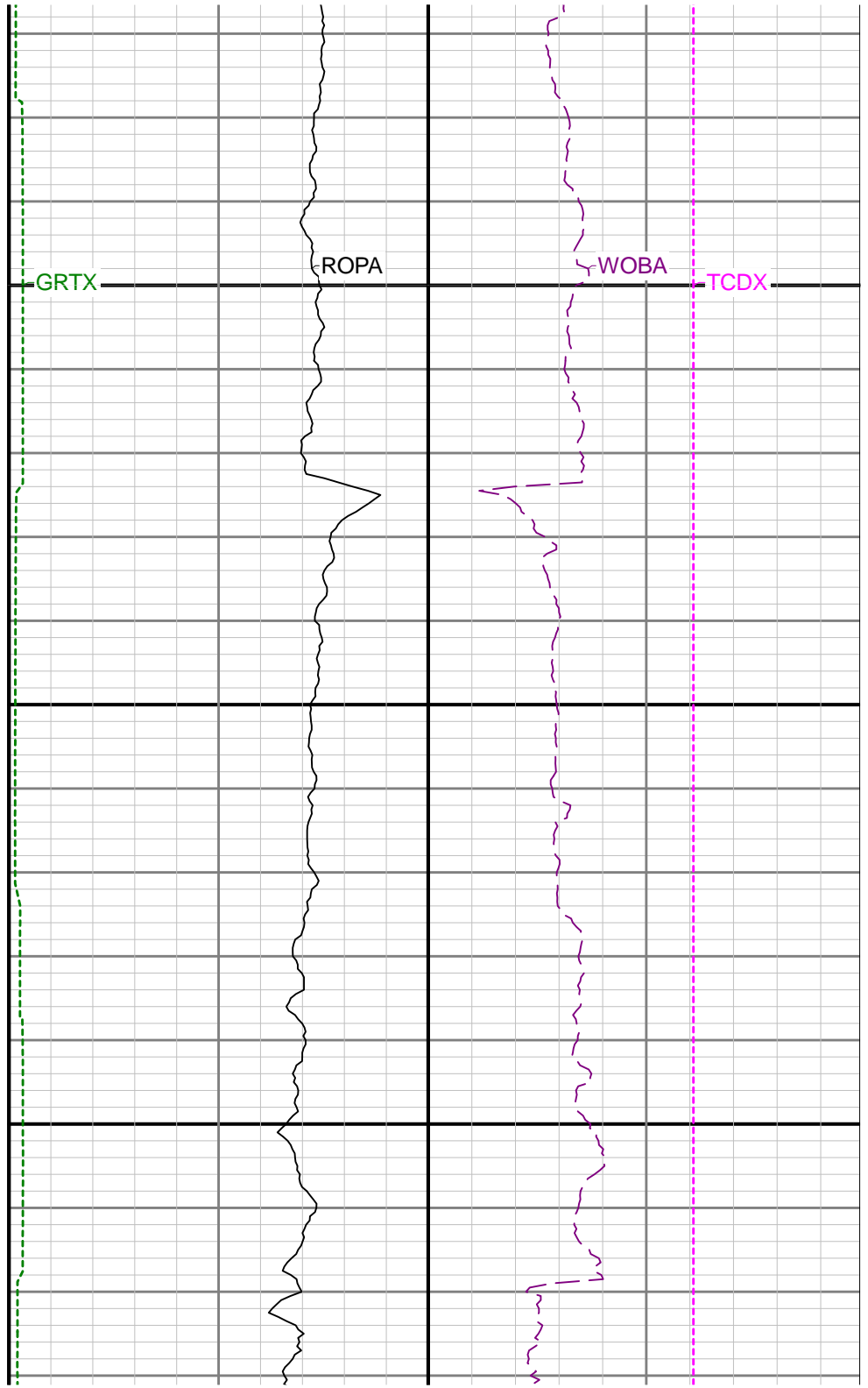
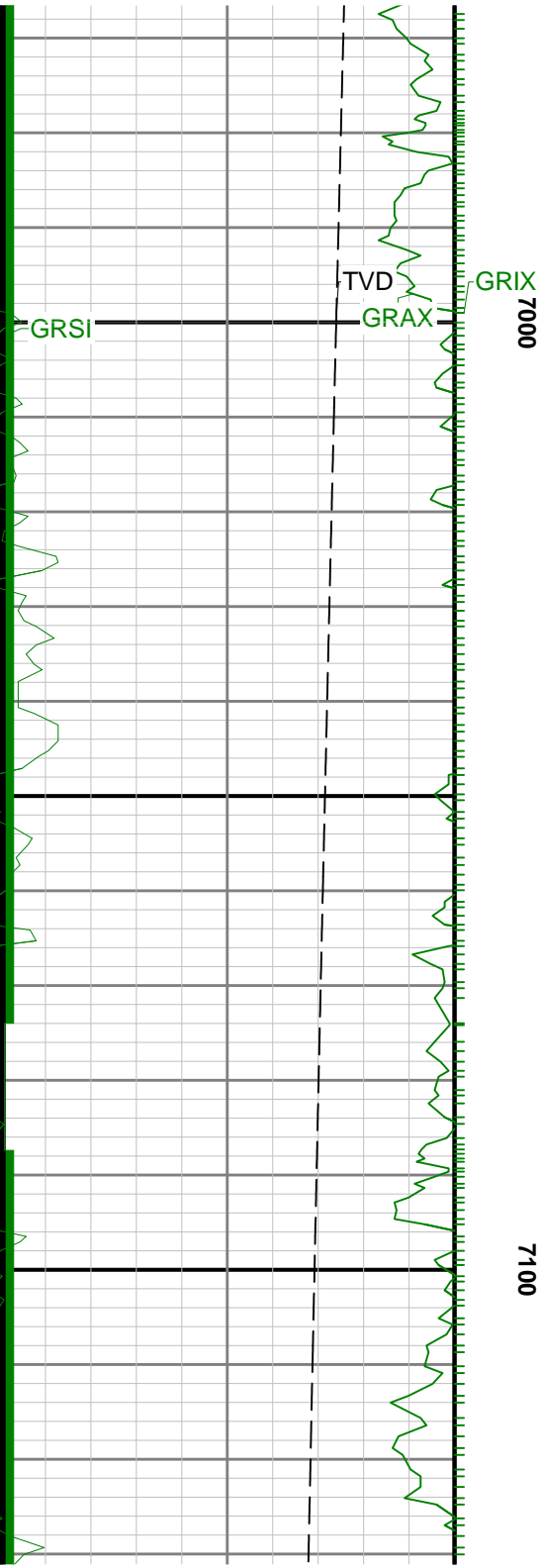




0069

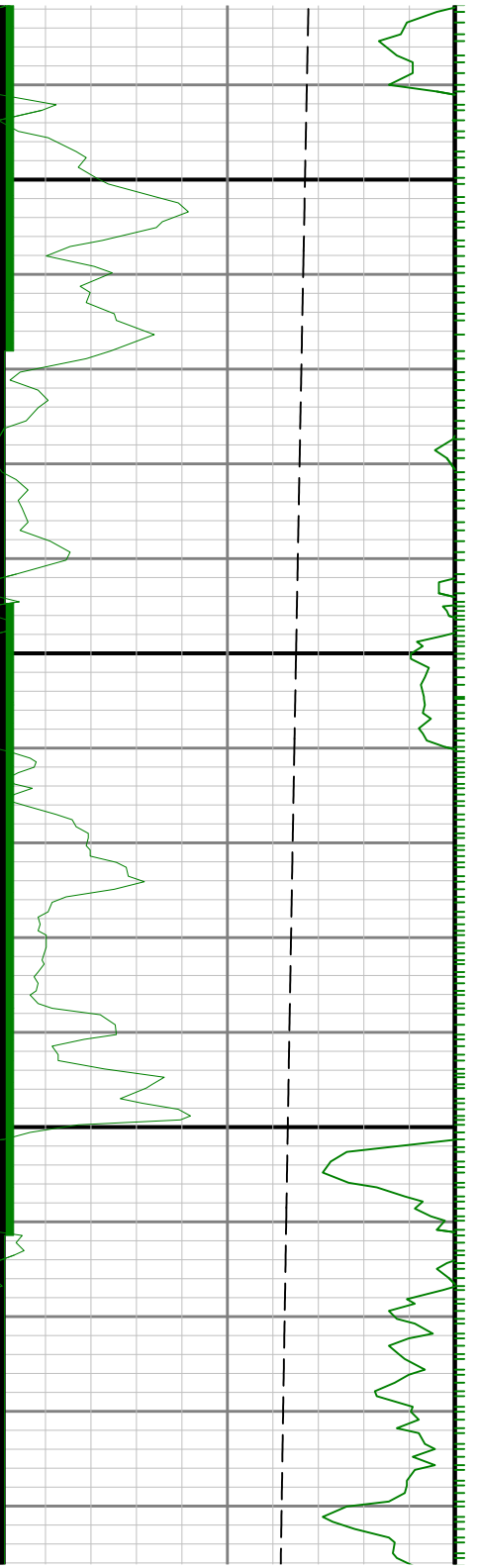
0

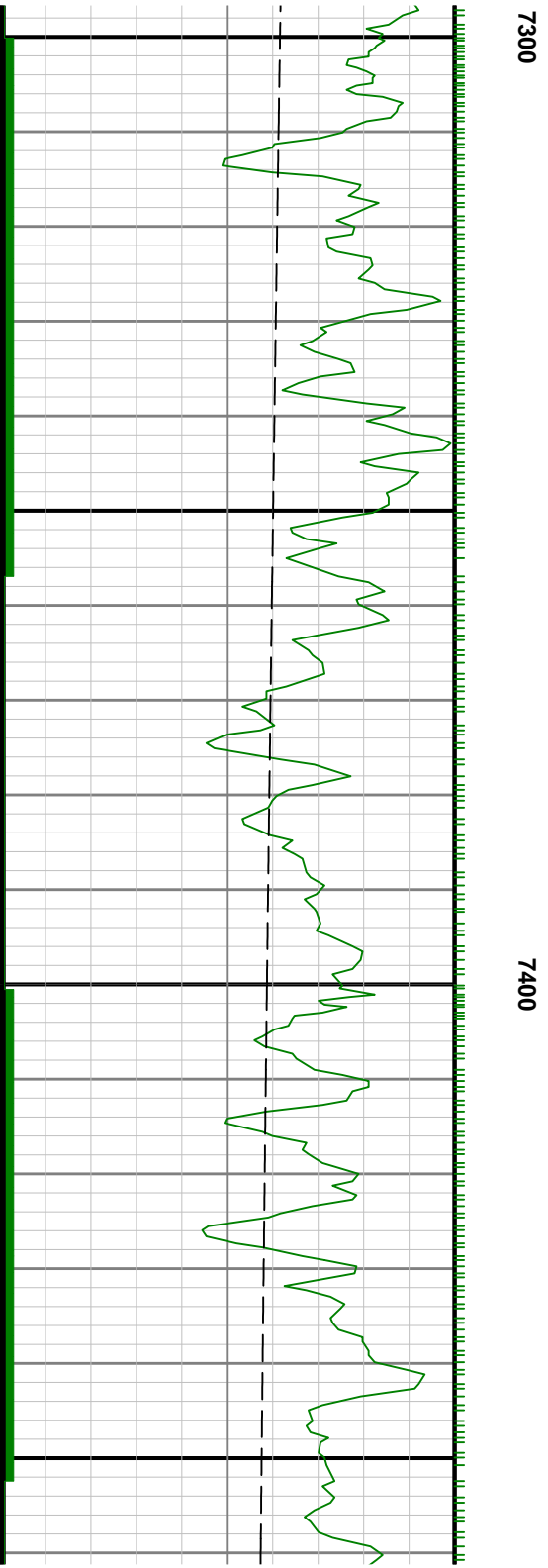
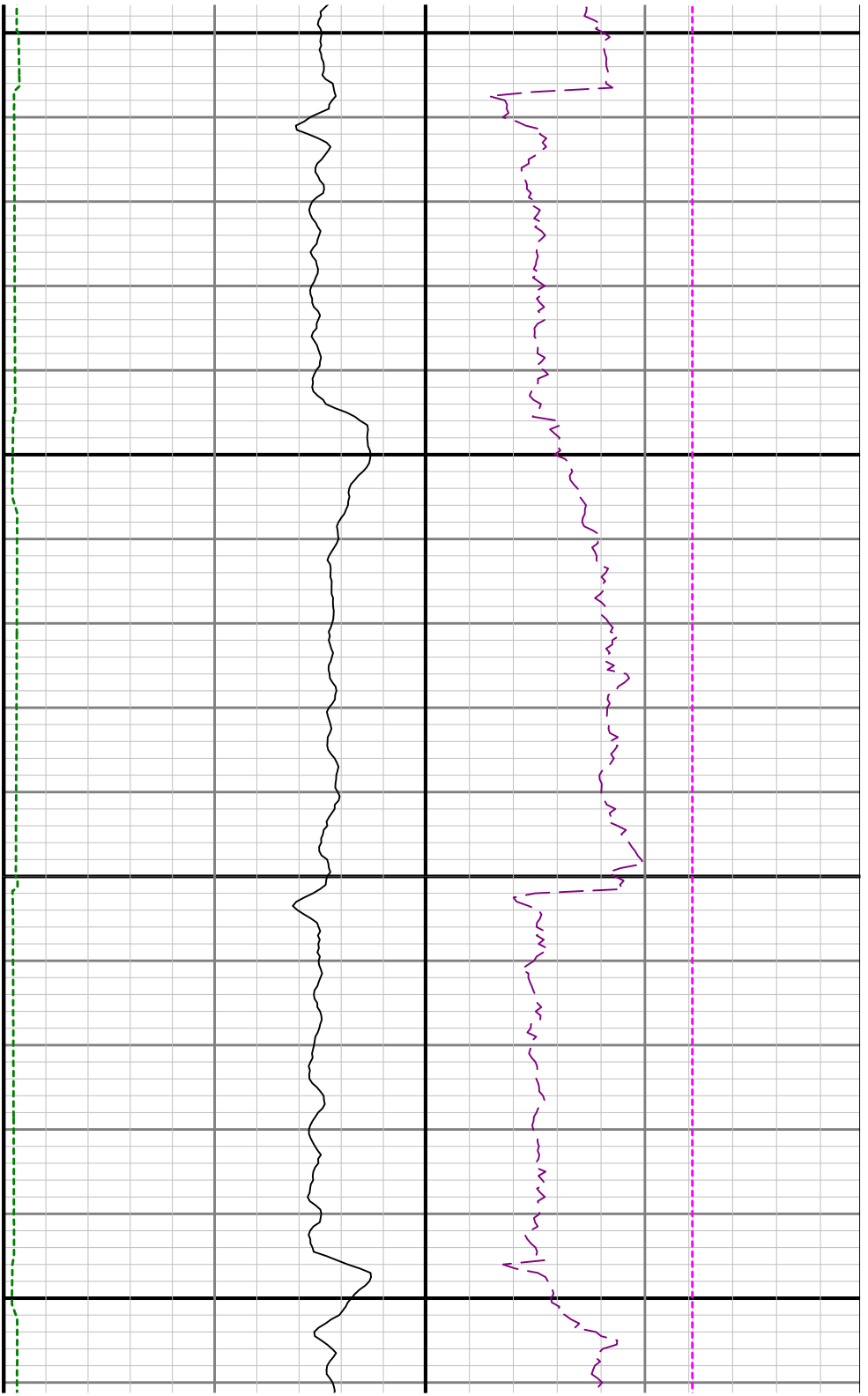




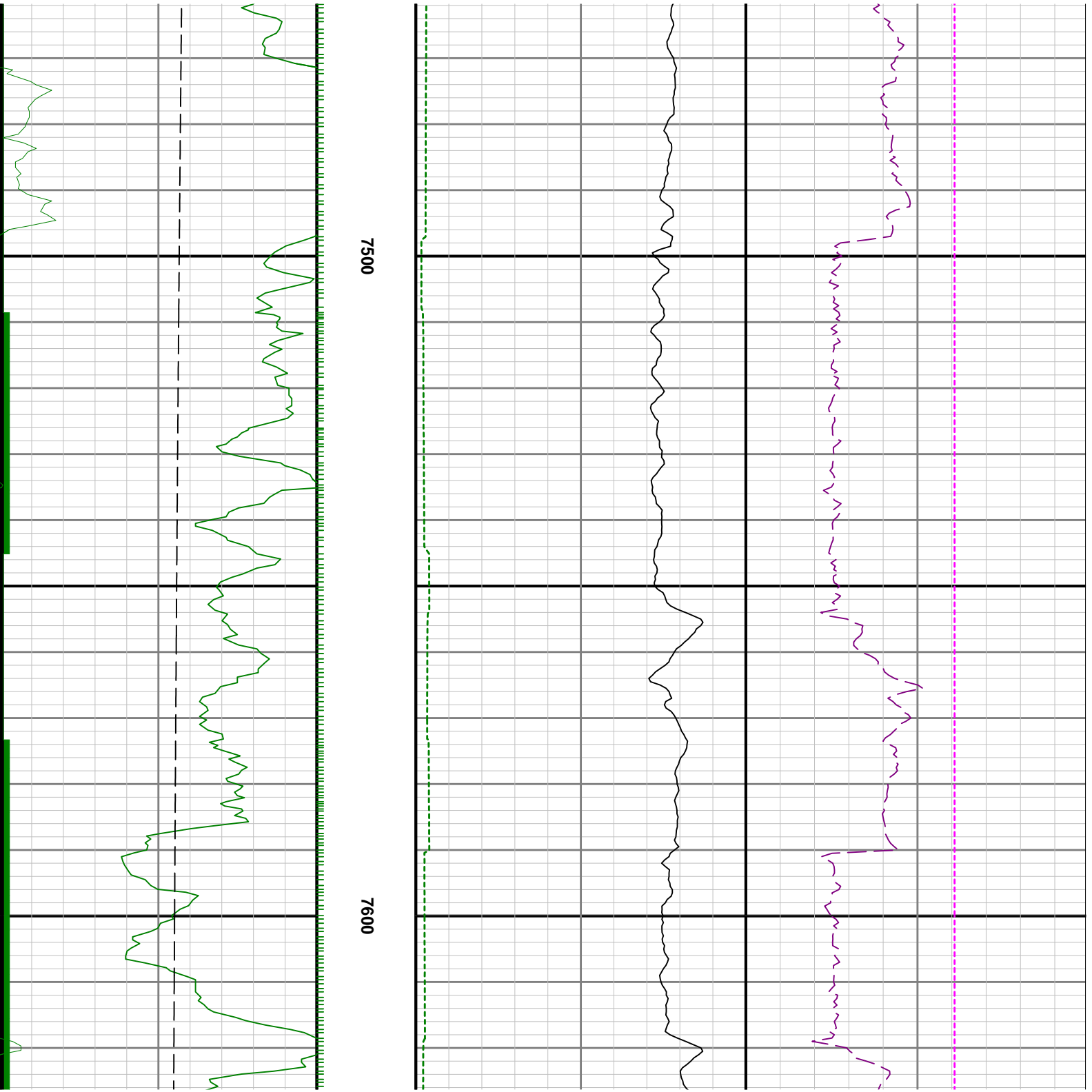


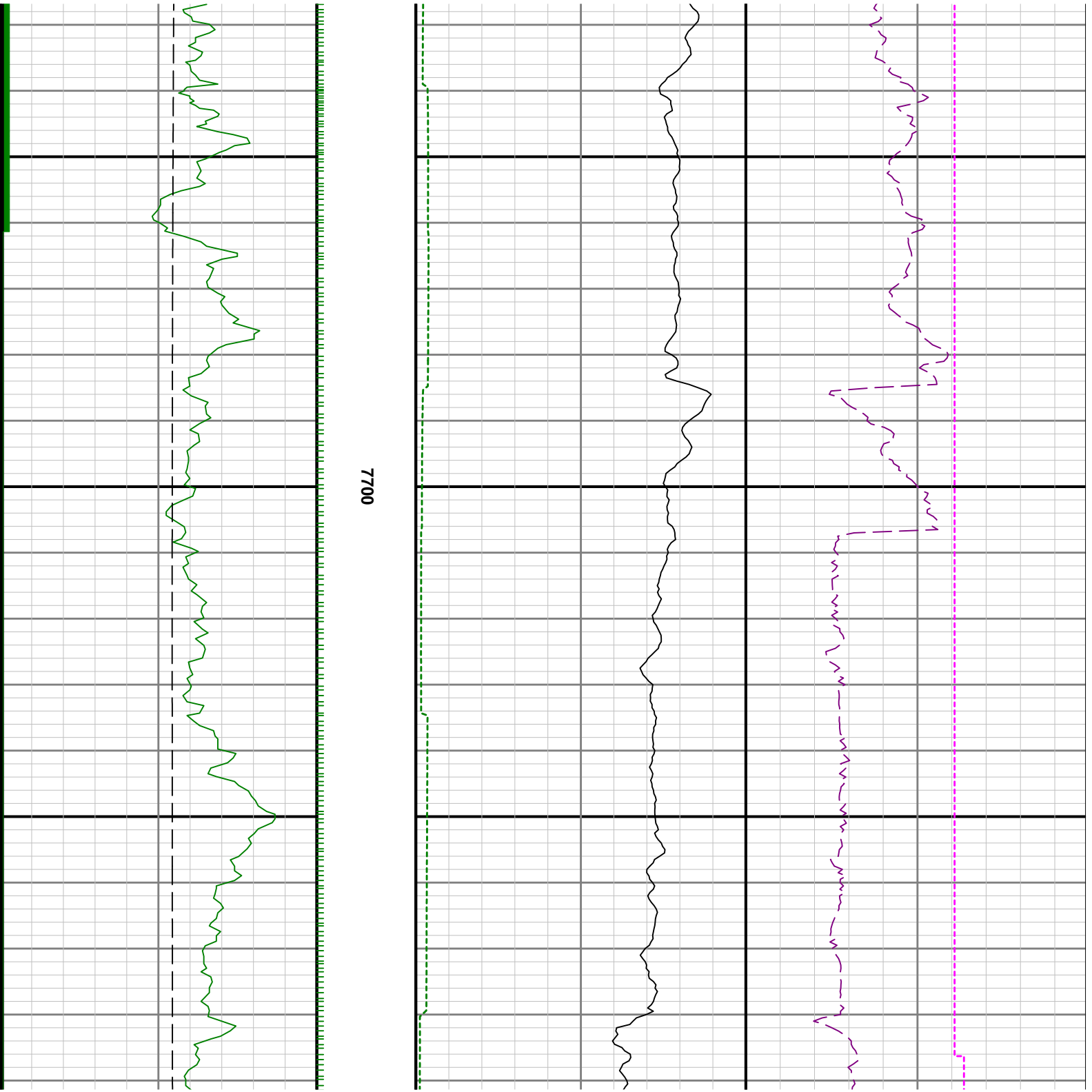
7200

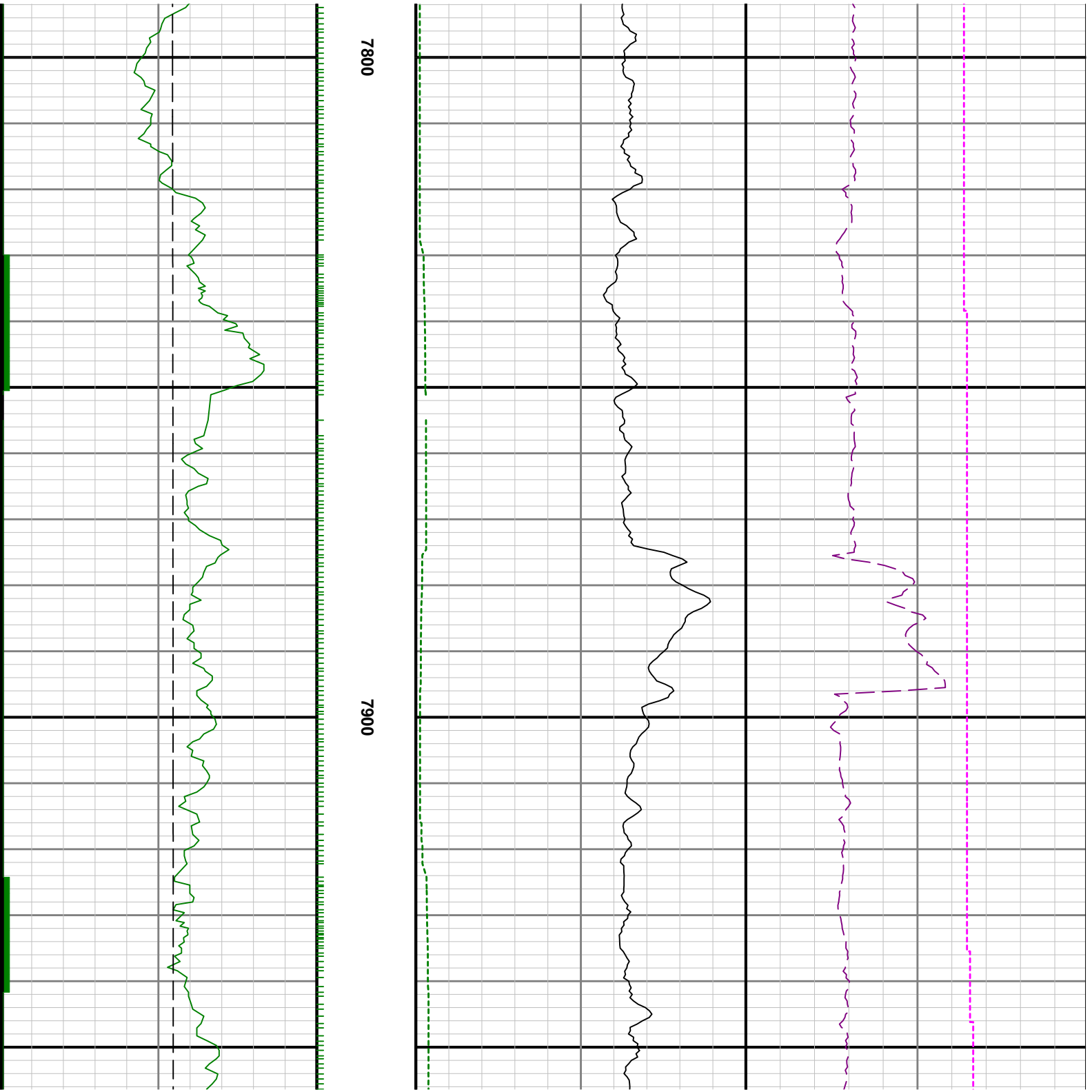


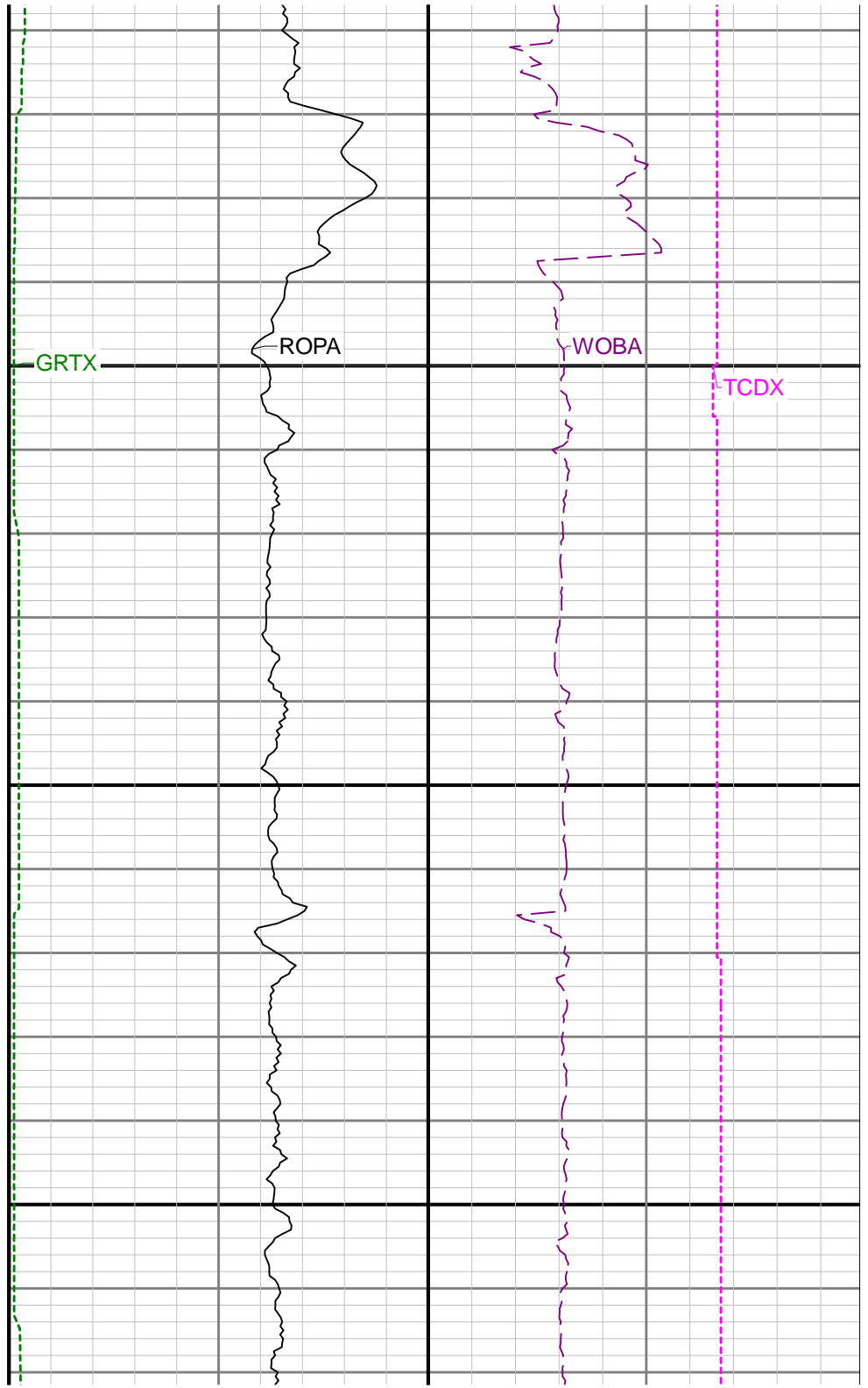


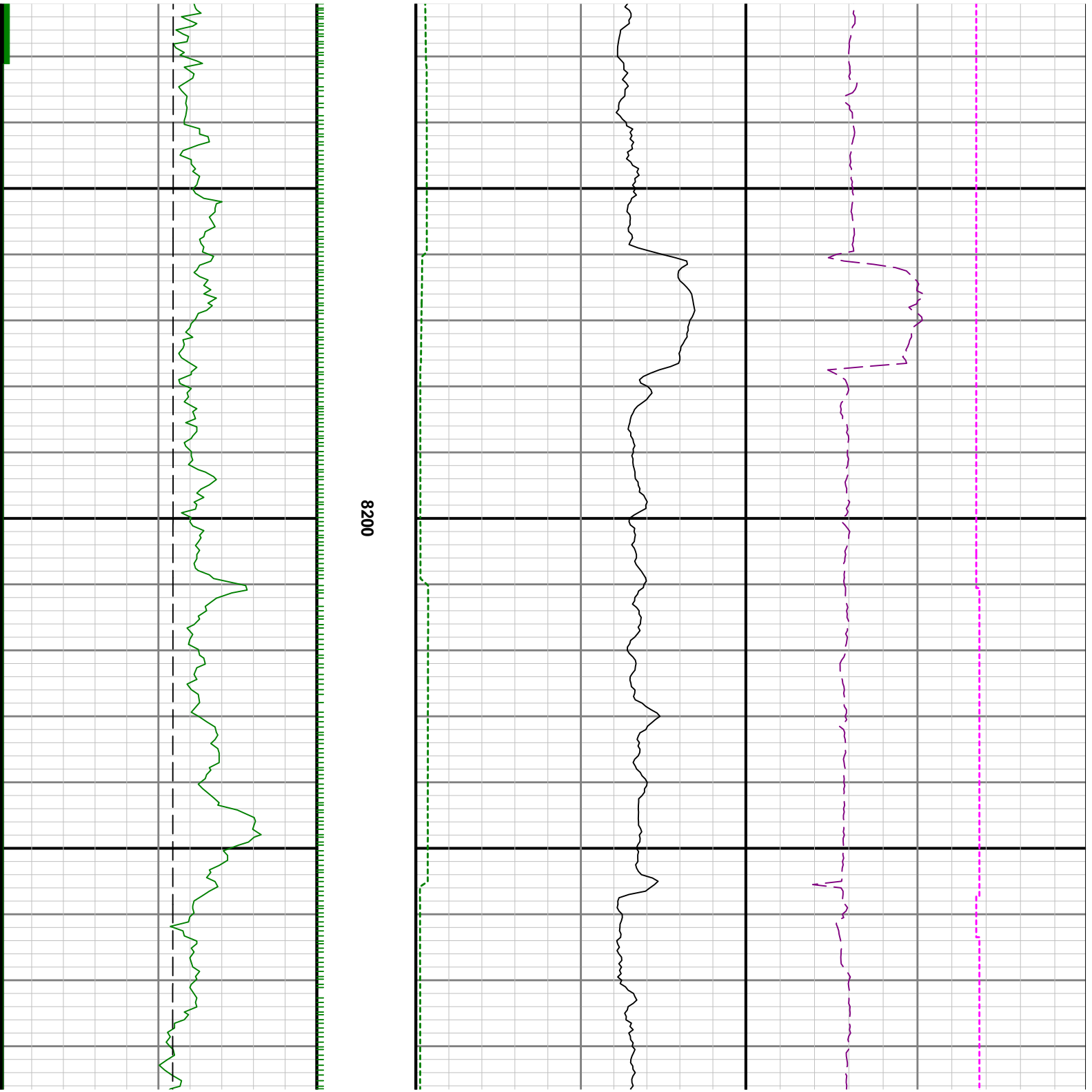


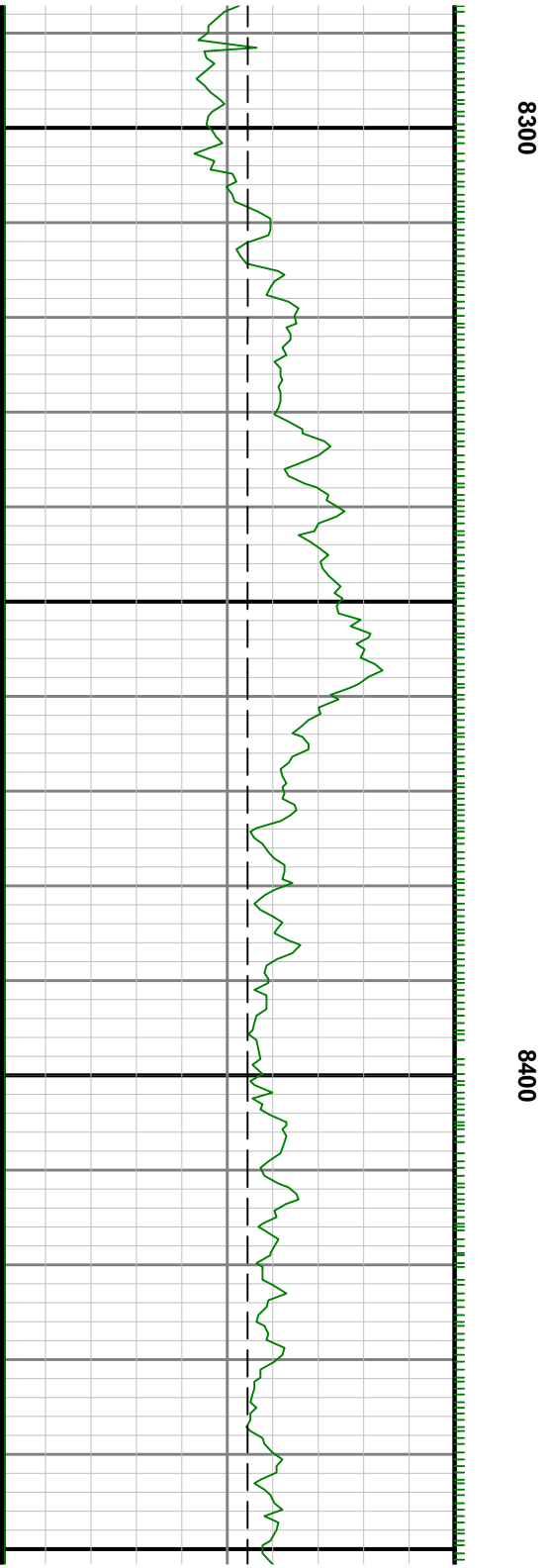


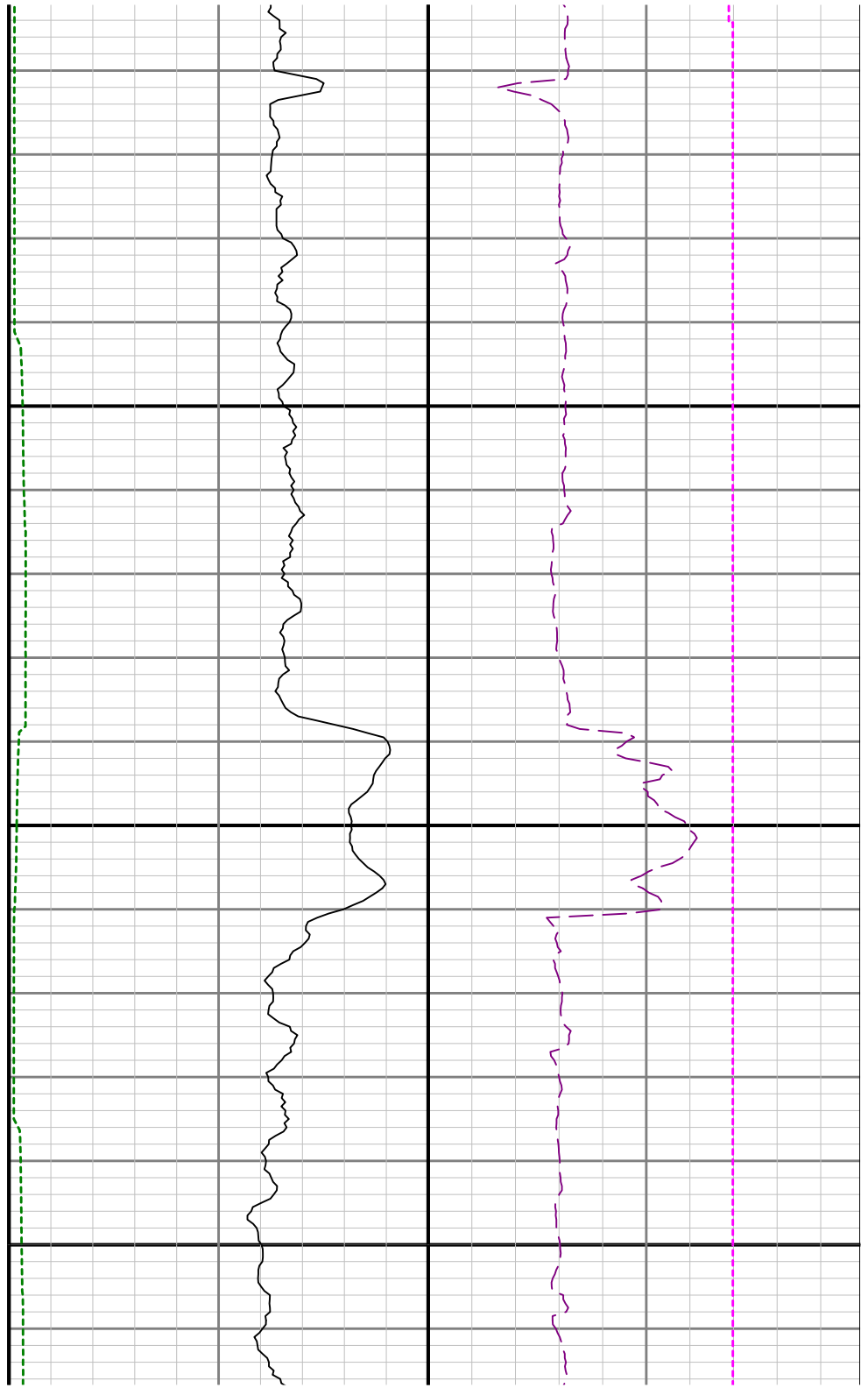
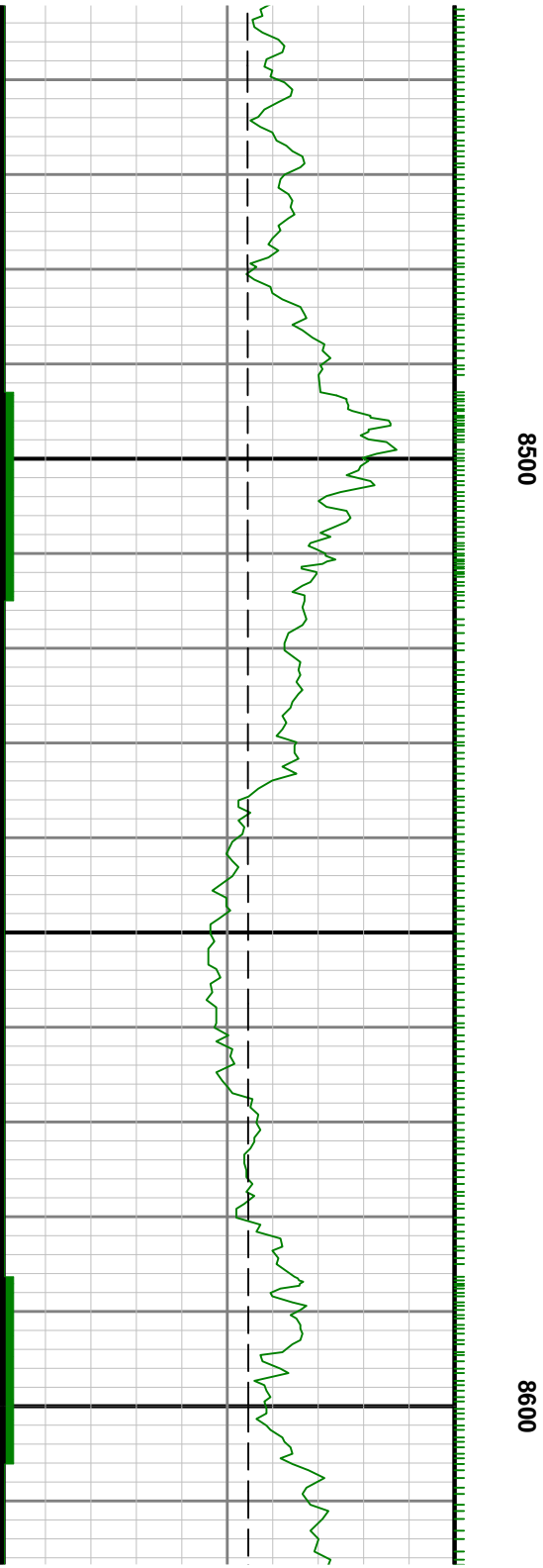


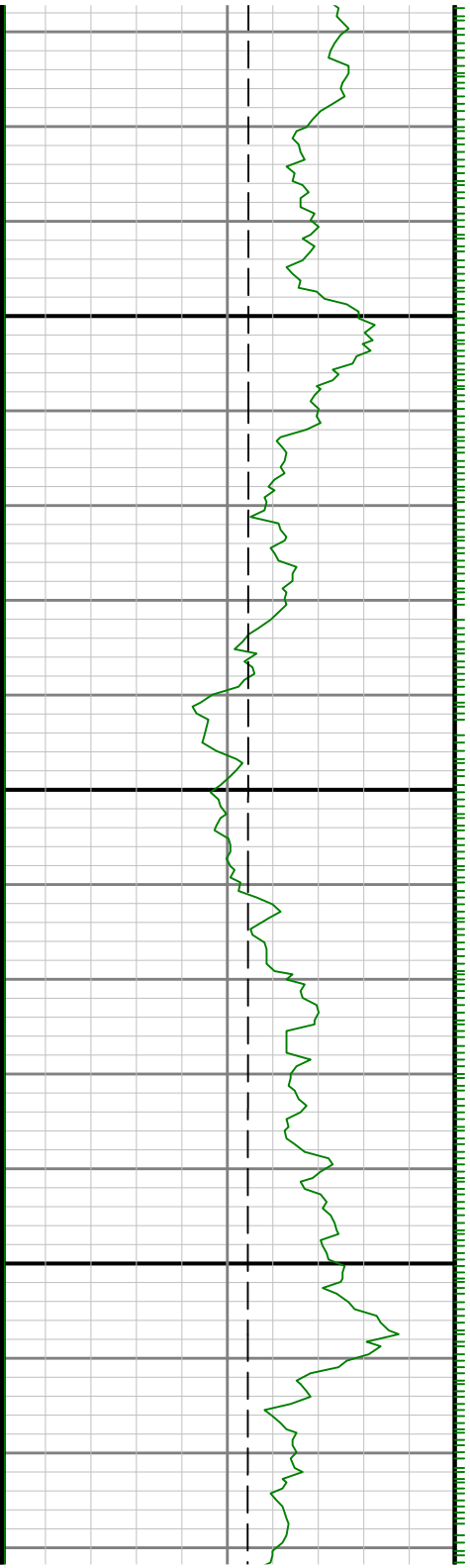




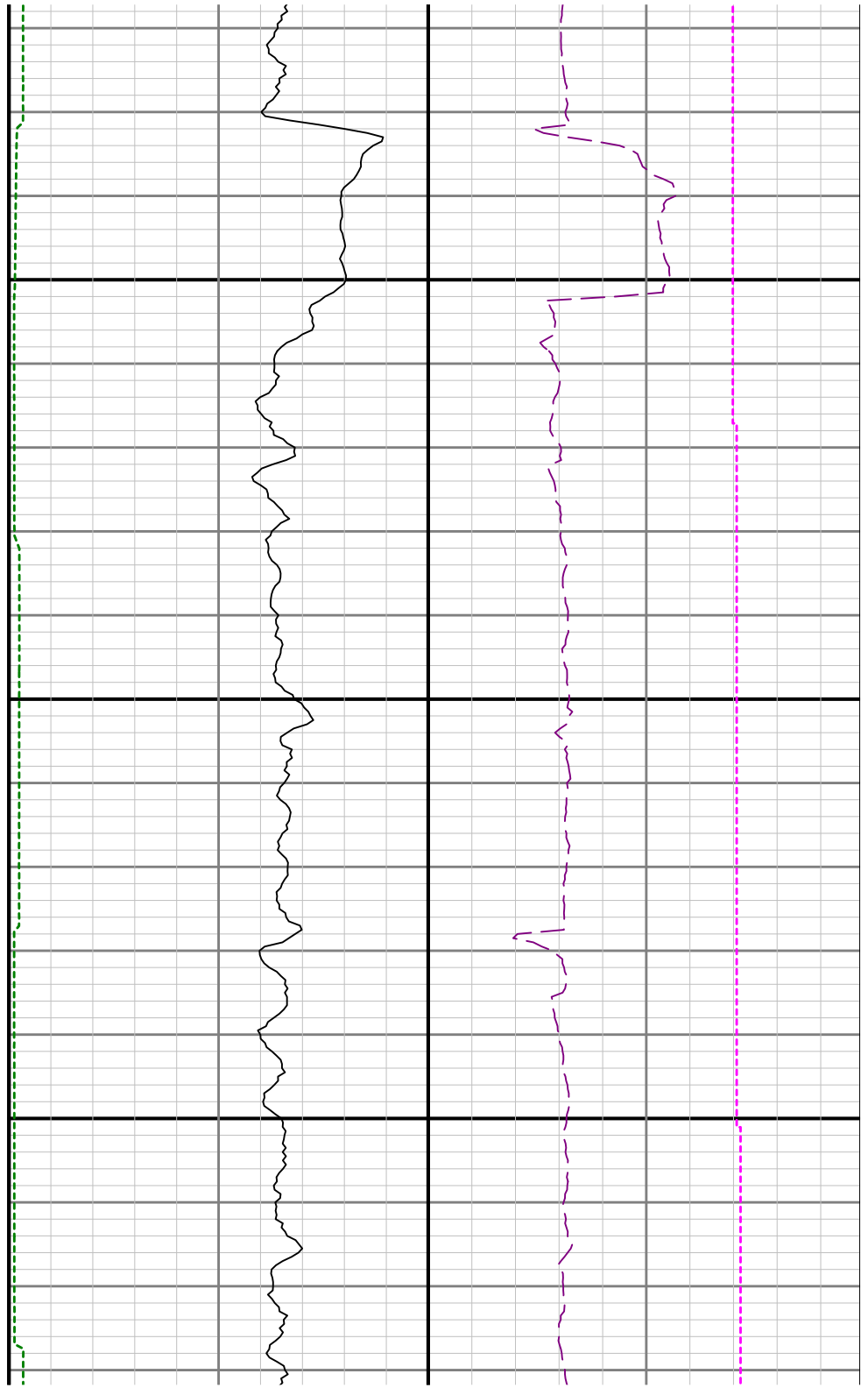




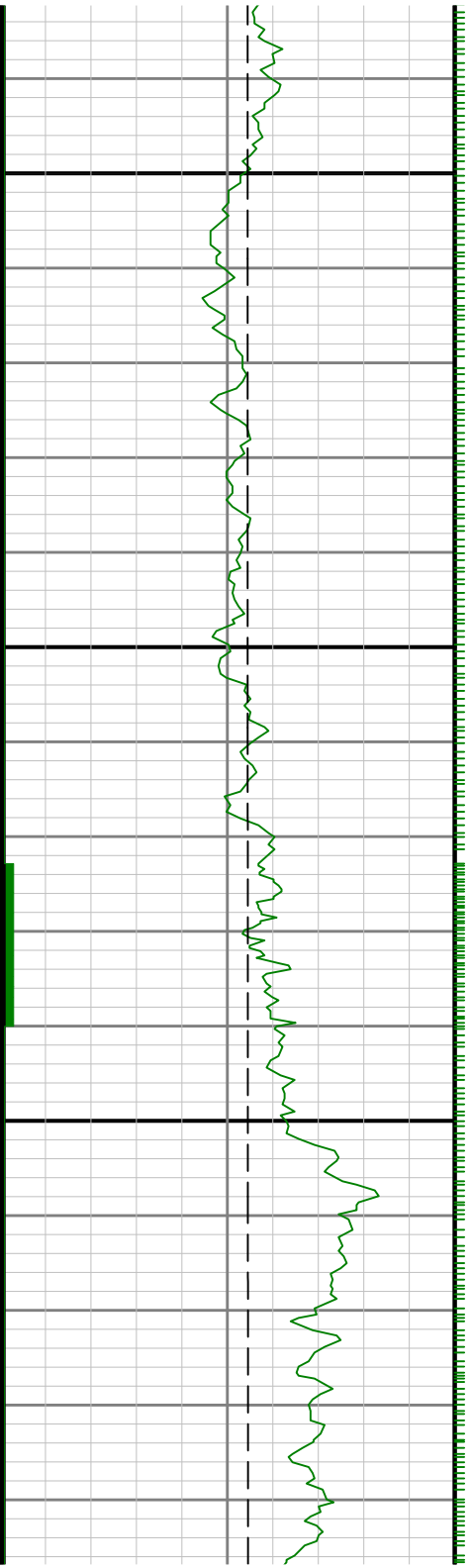




8700



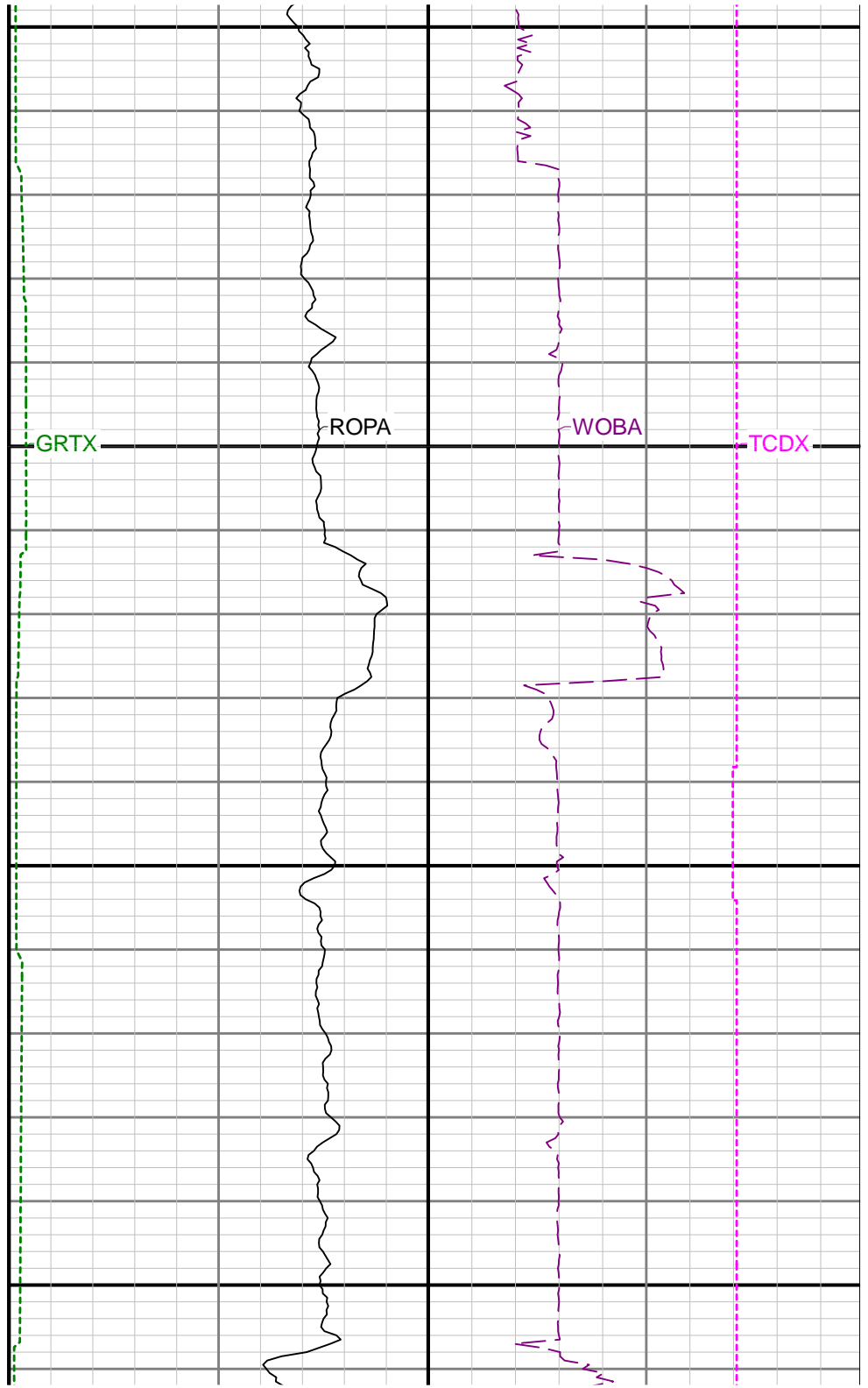
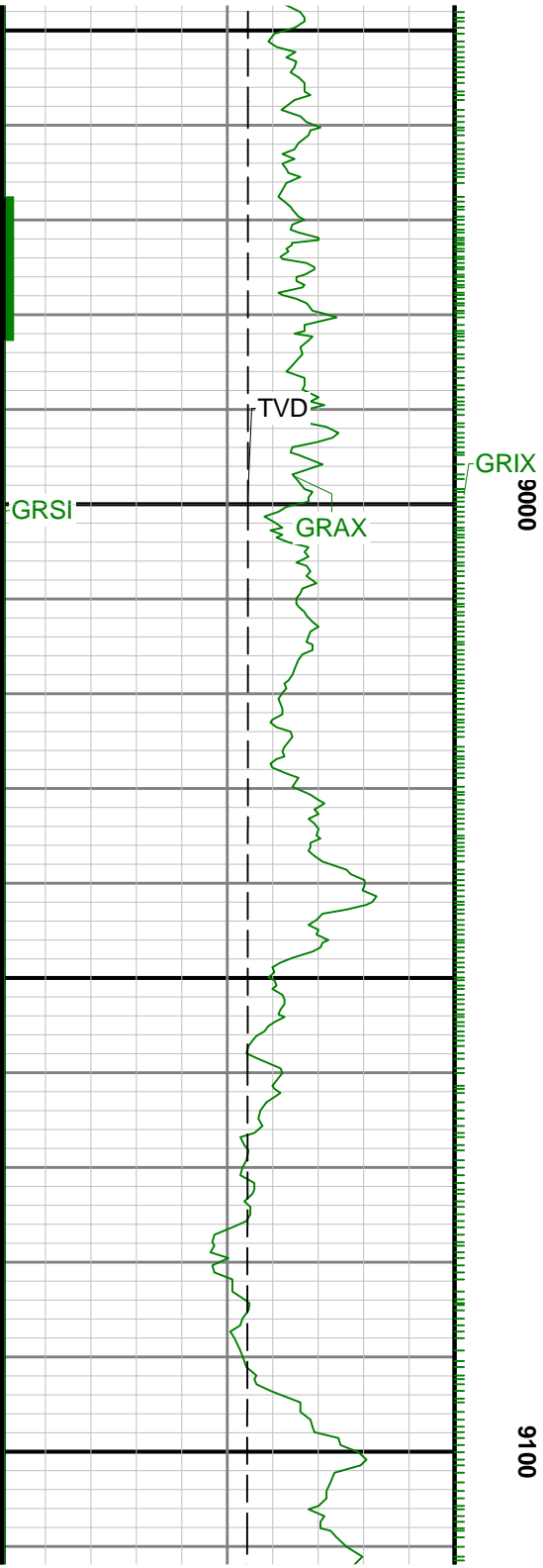


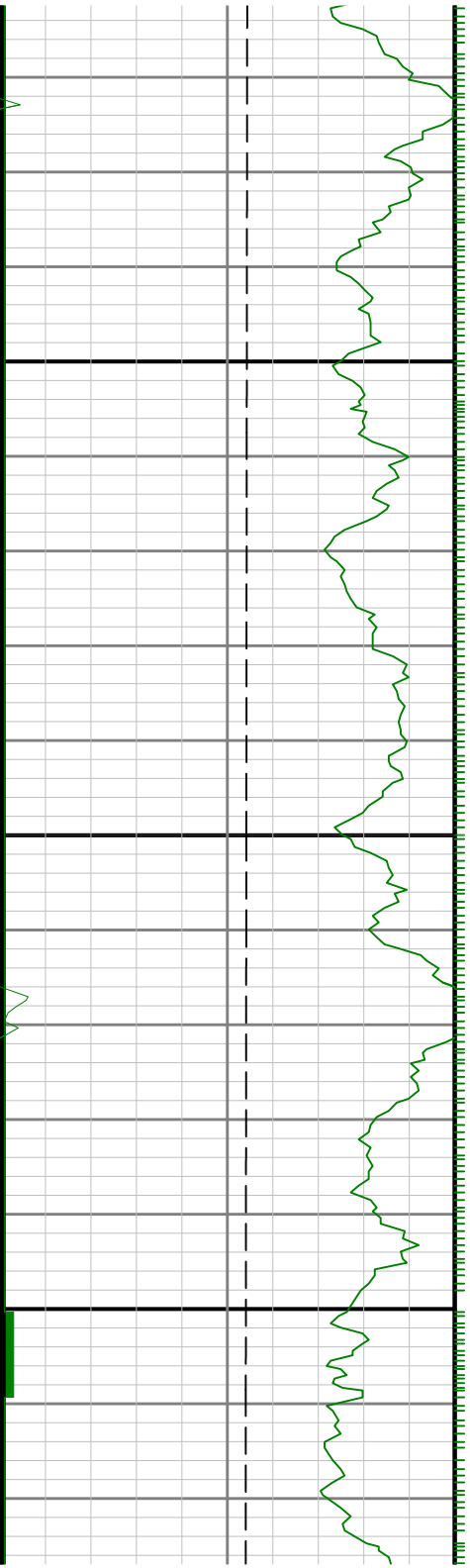


8900

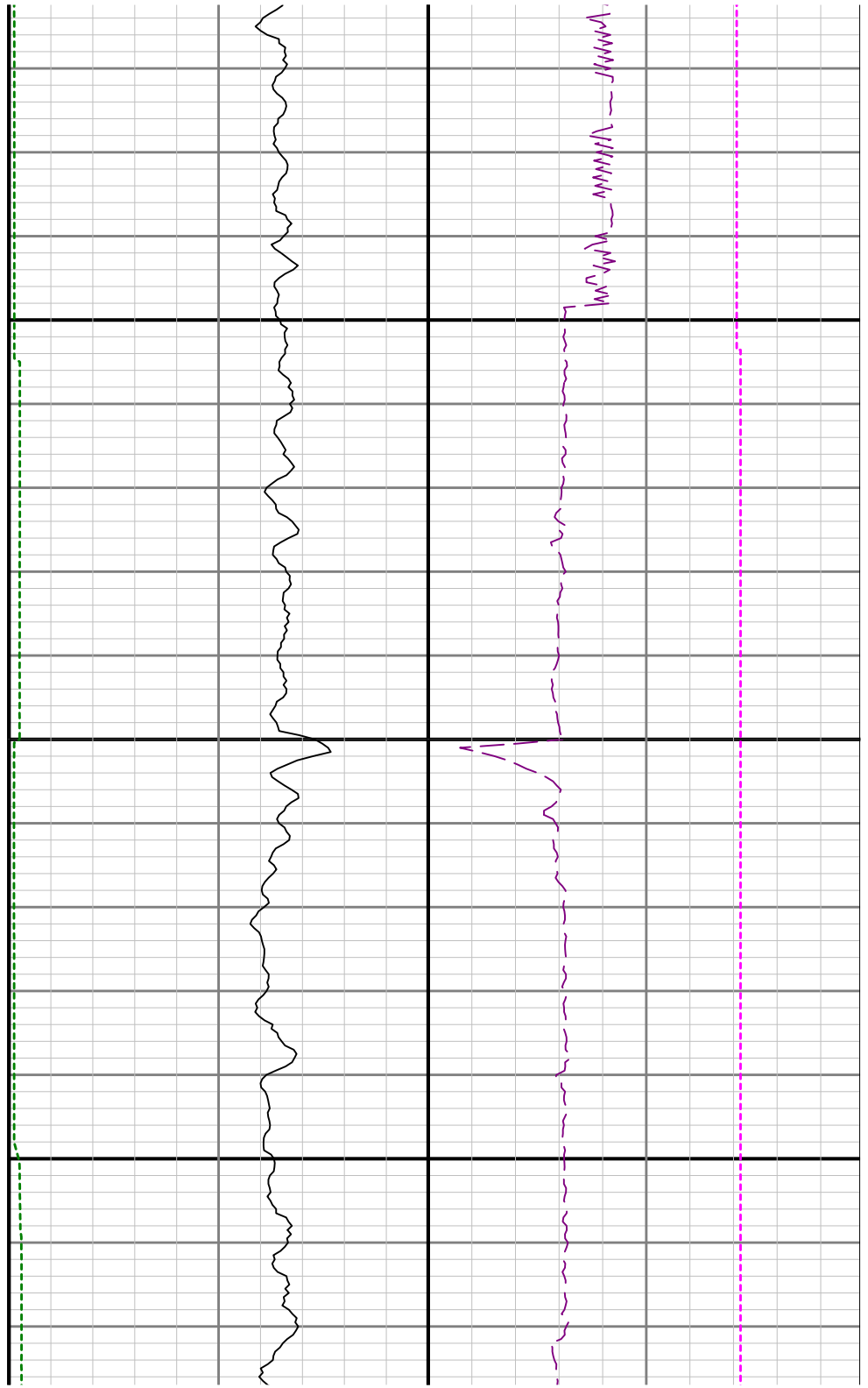
8800

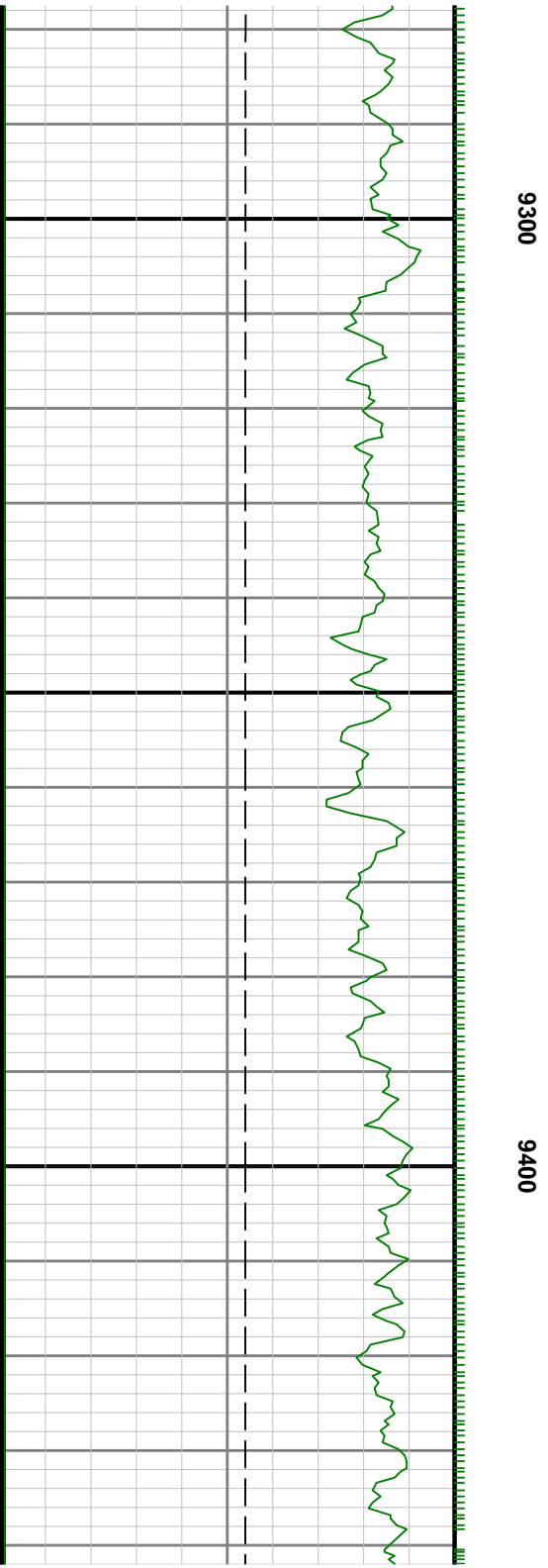
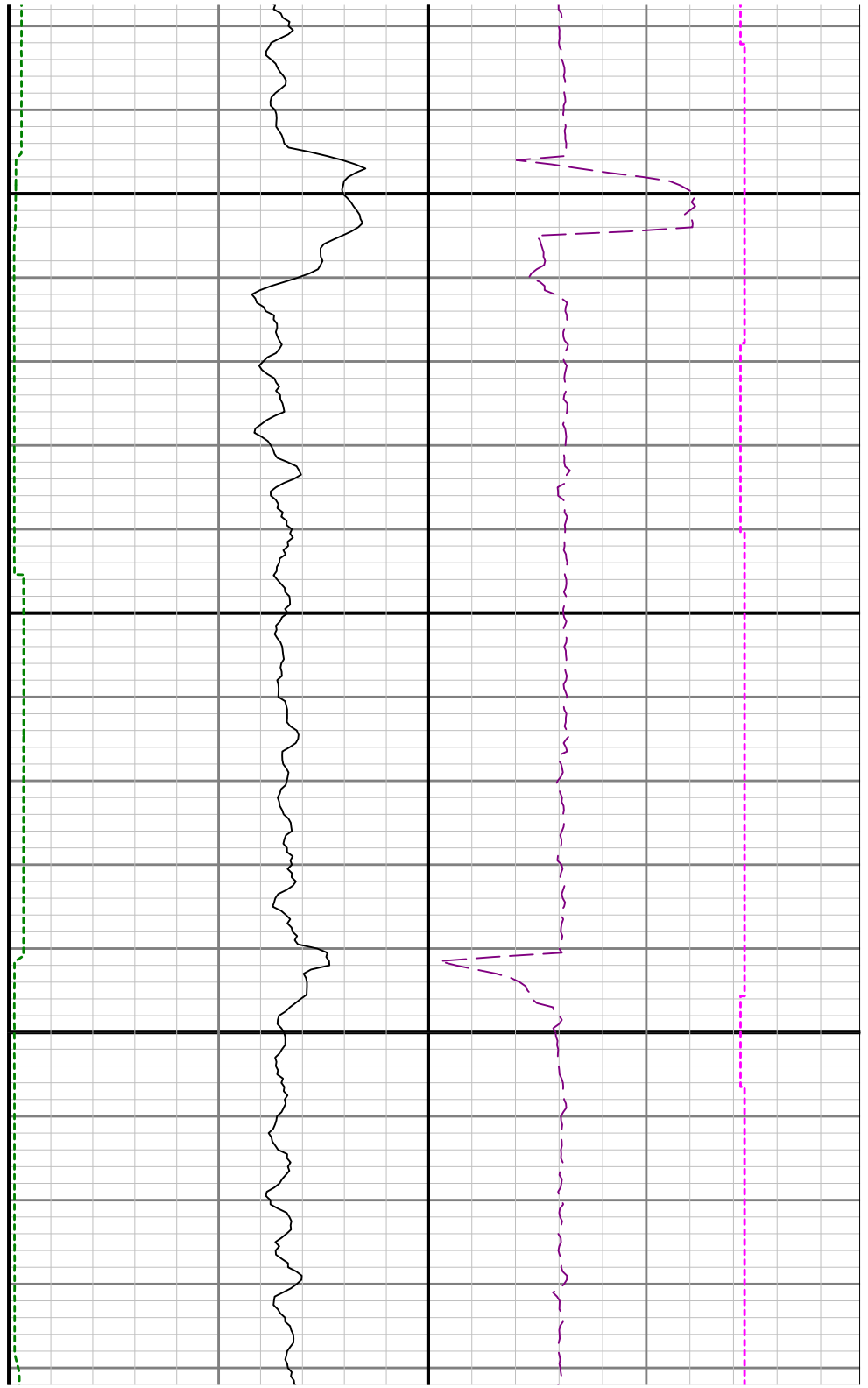


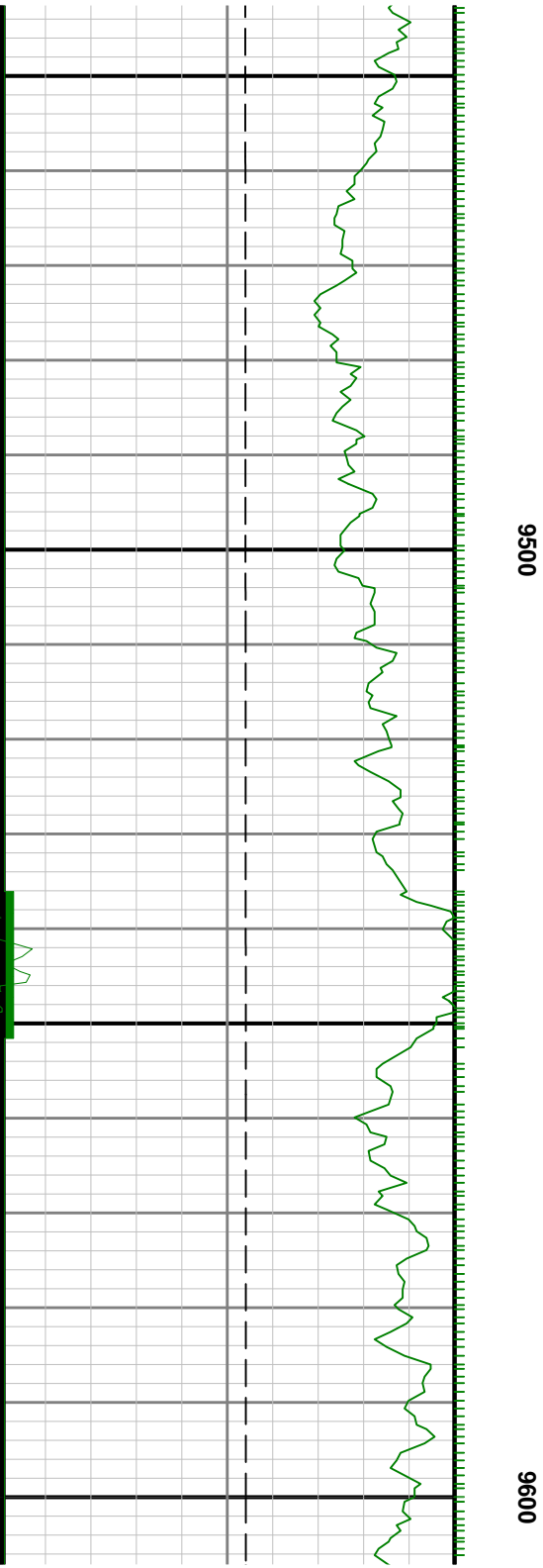


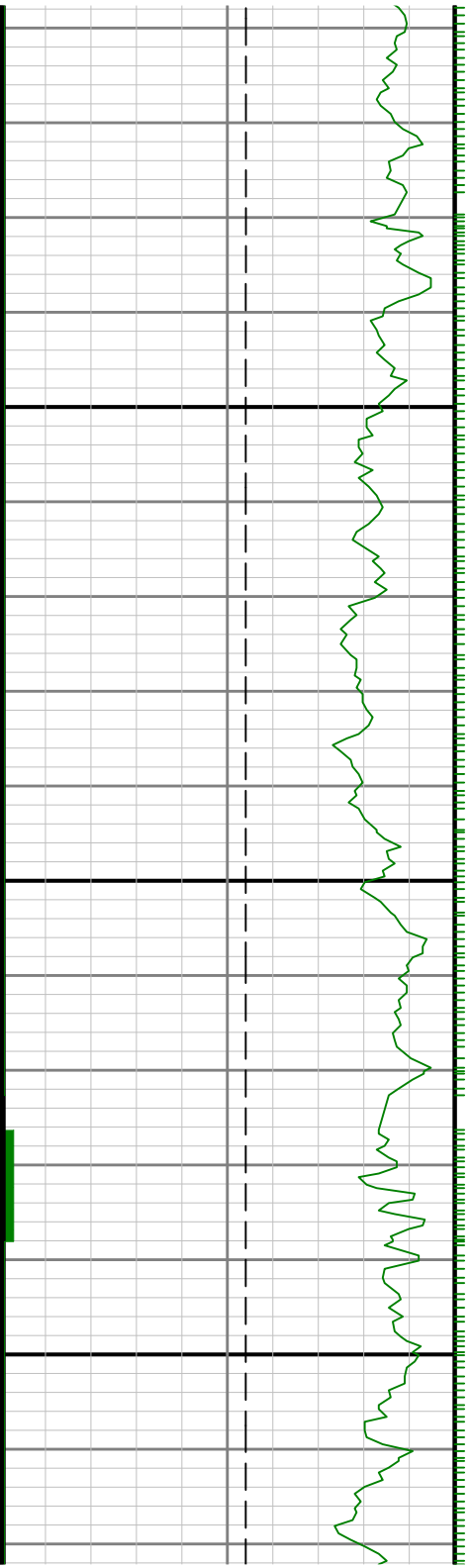


**9200**

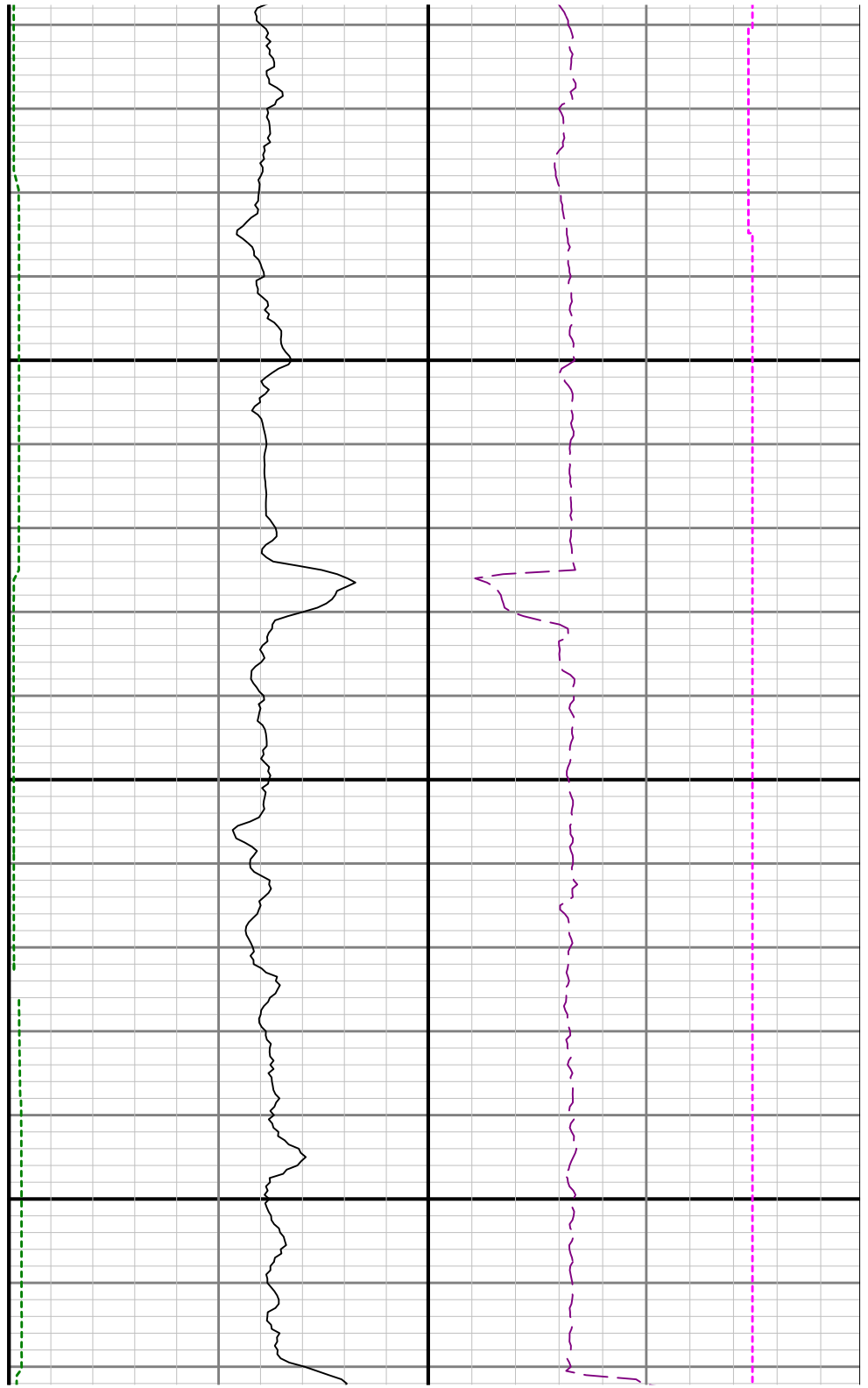


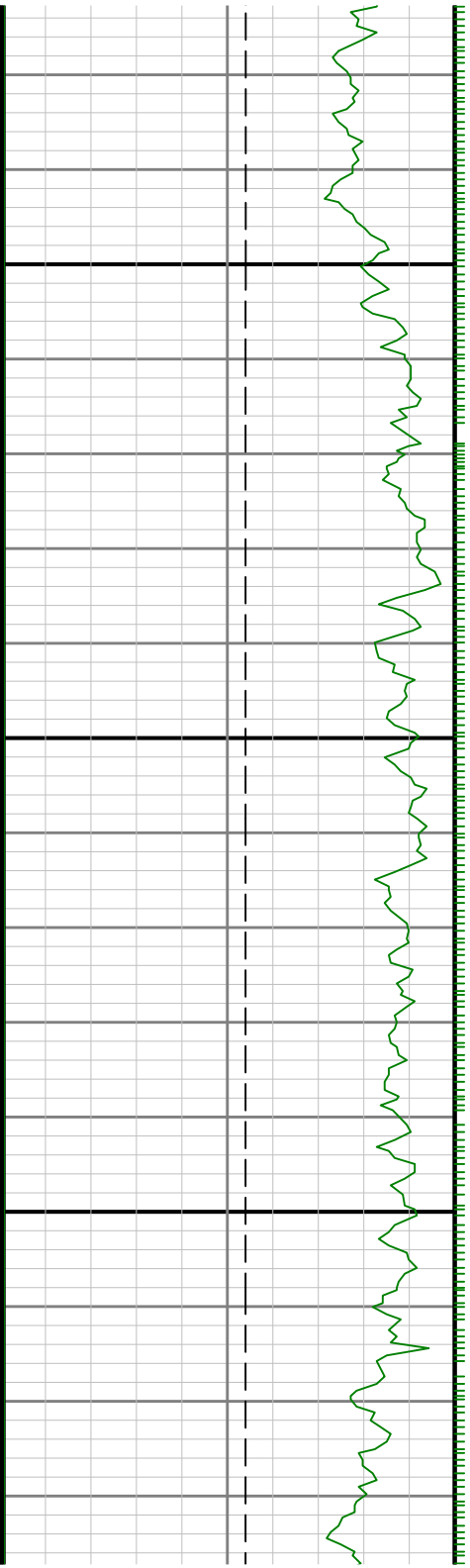






9700

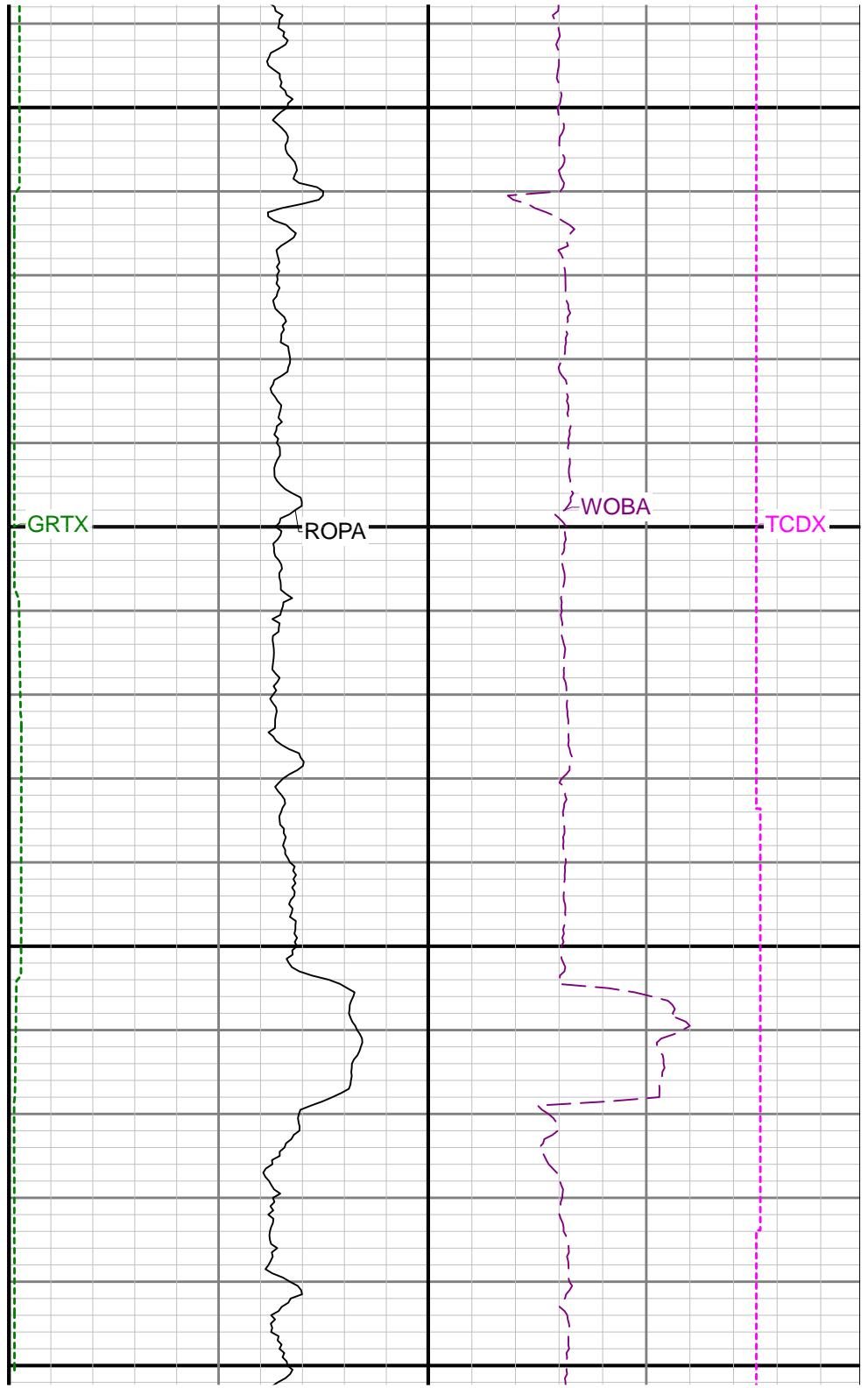
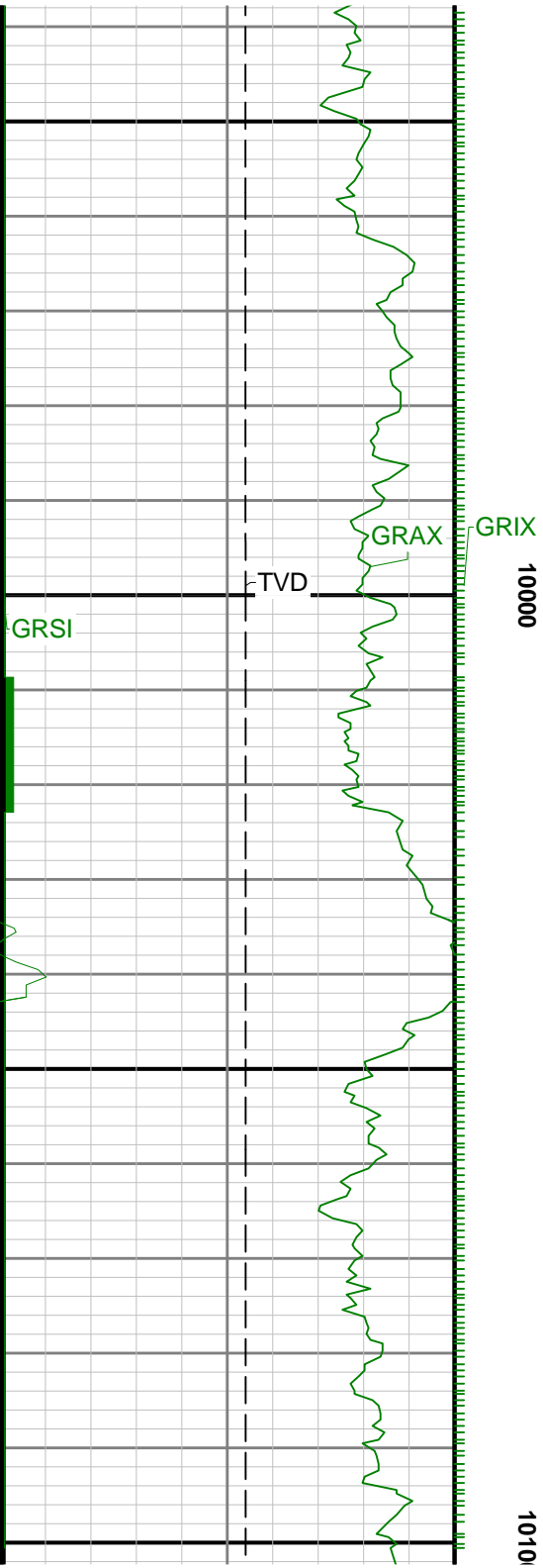




0066

0086

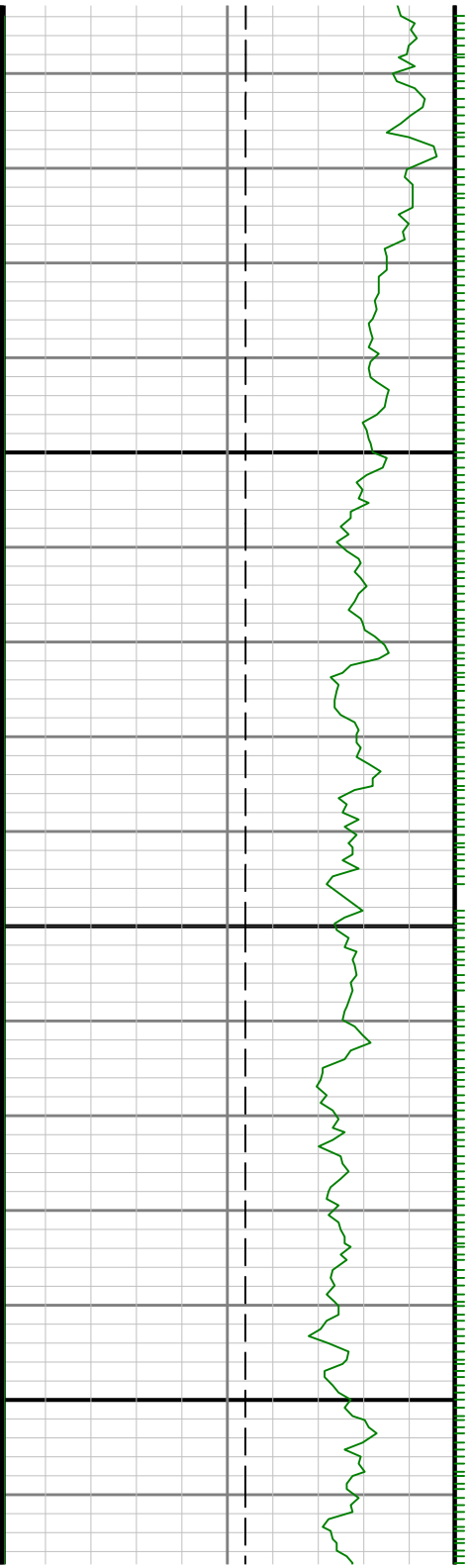


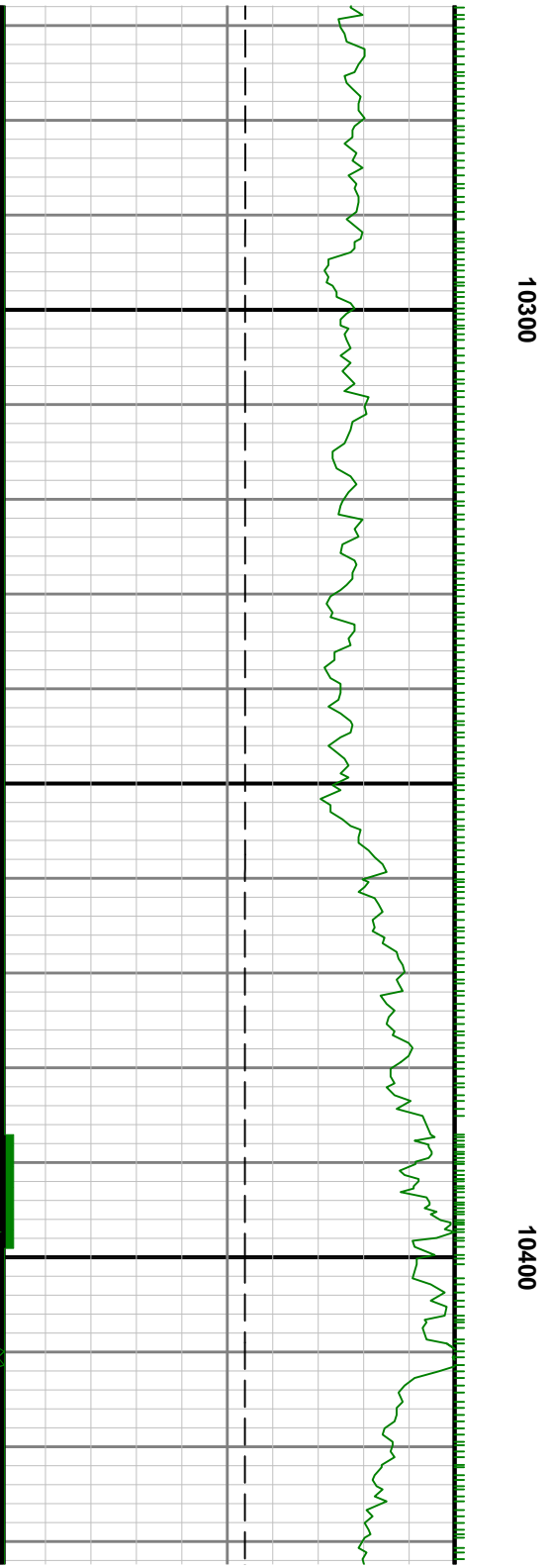
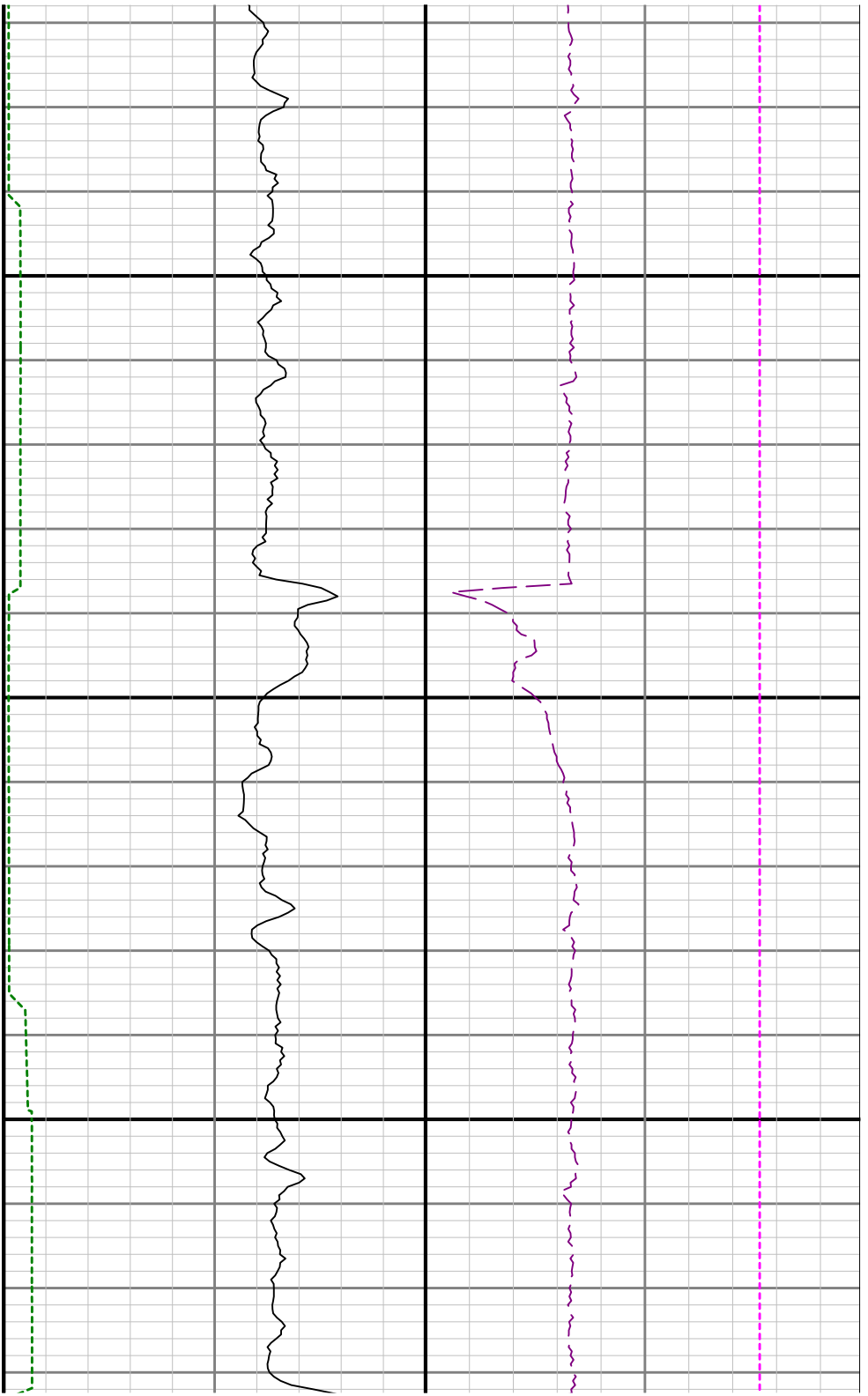


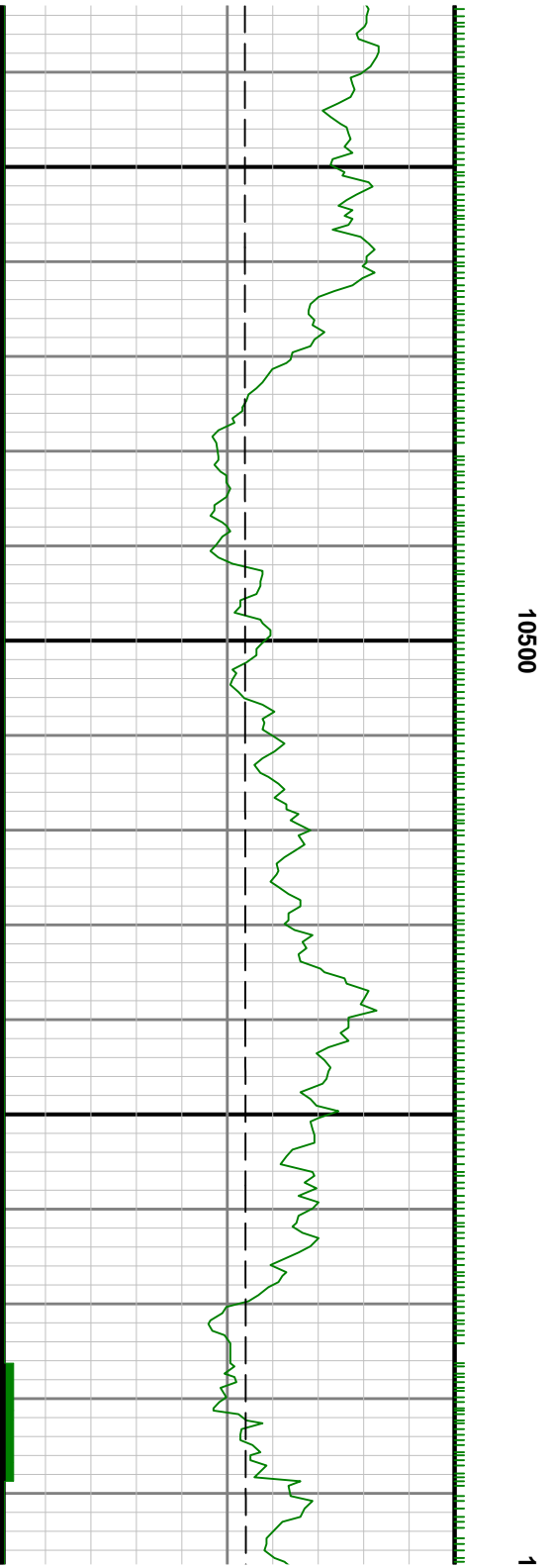
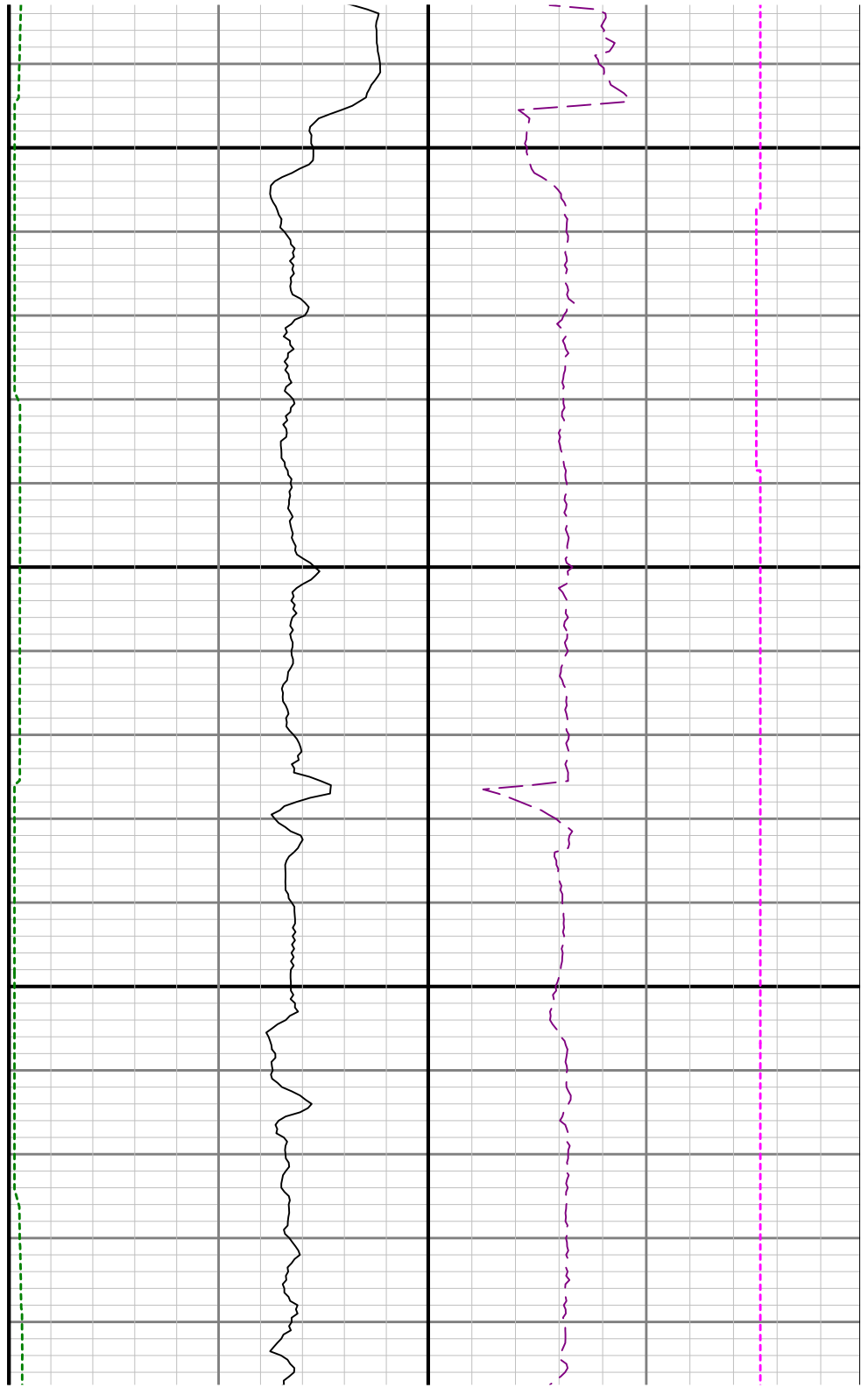


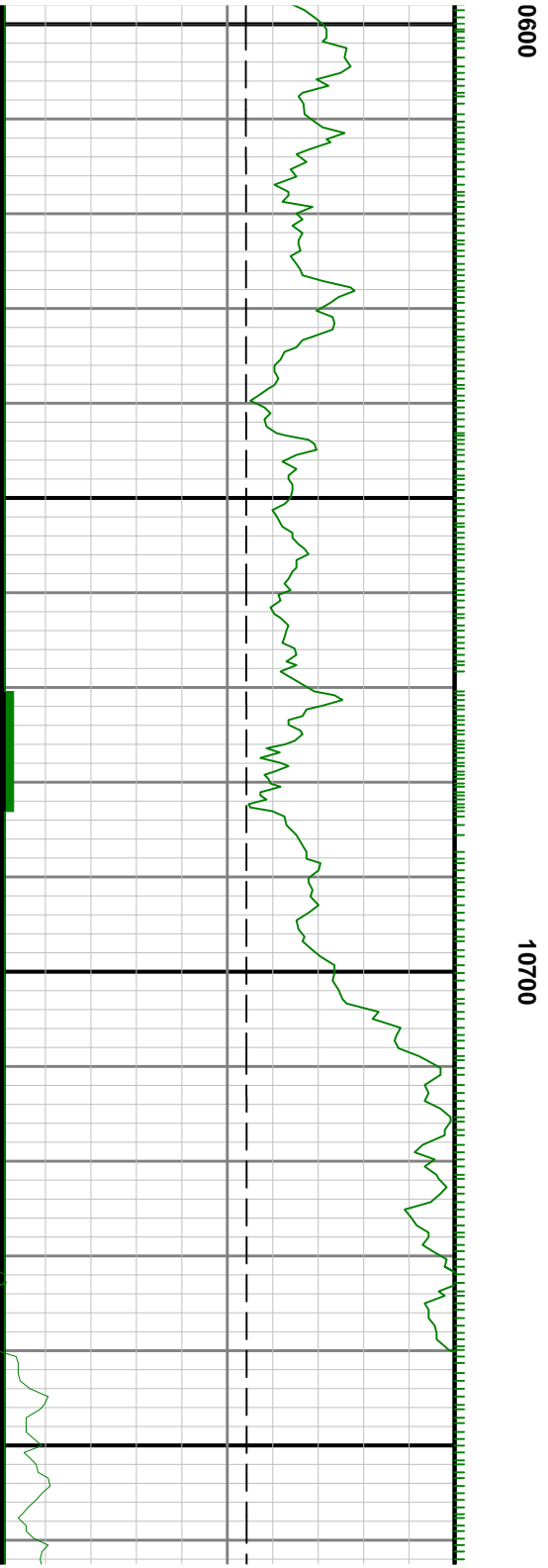
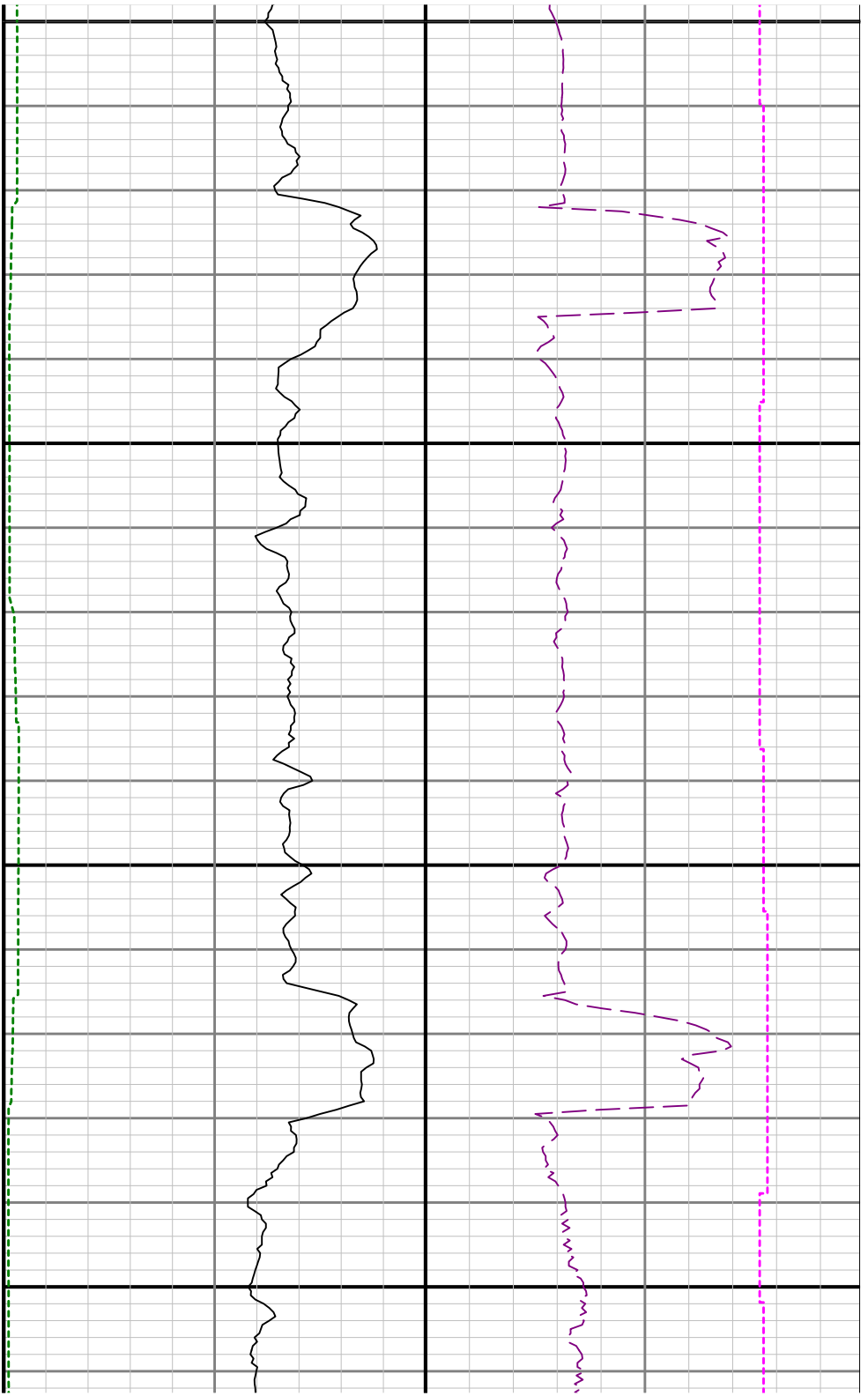


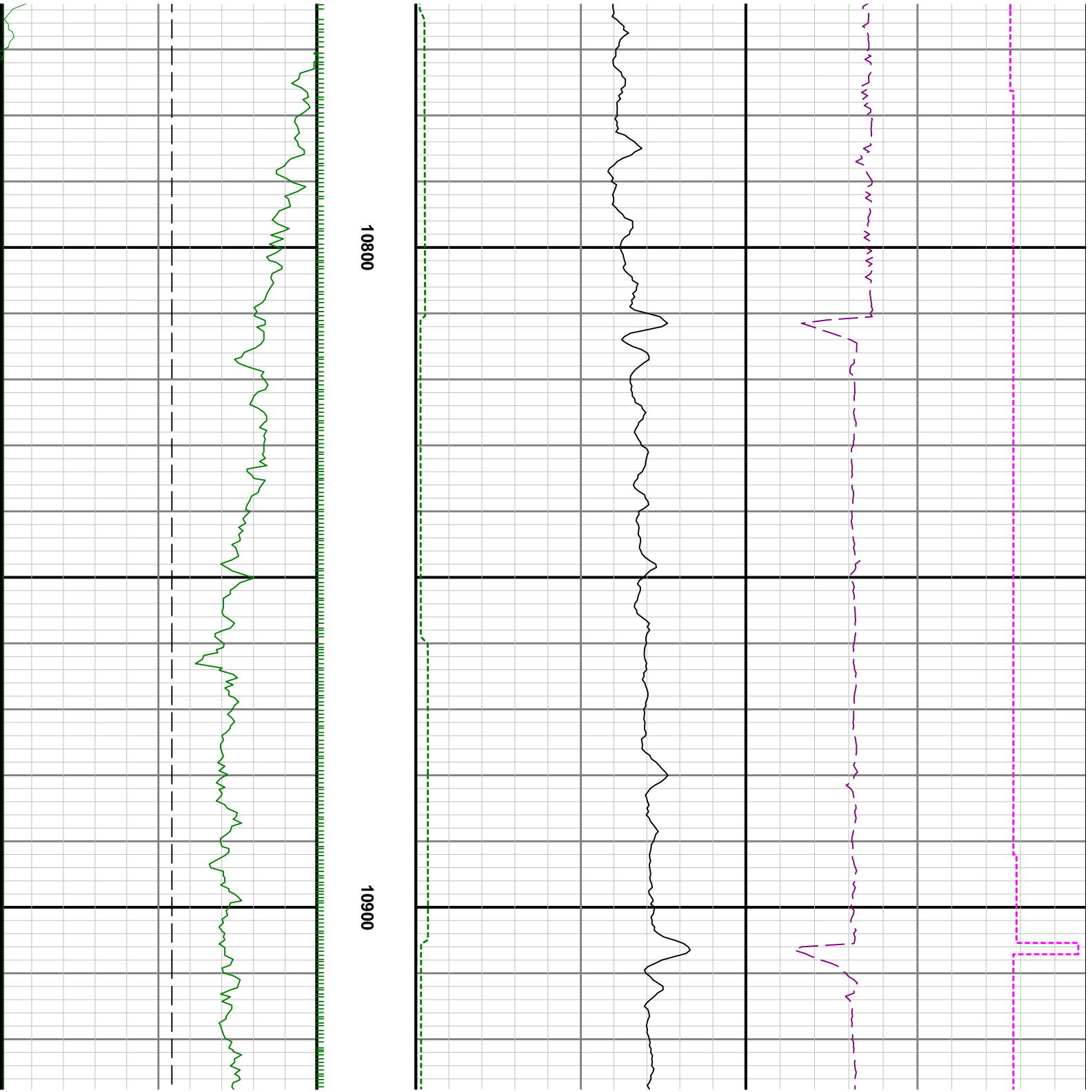
) 10200

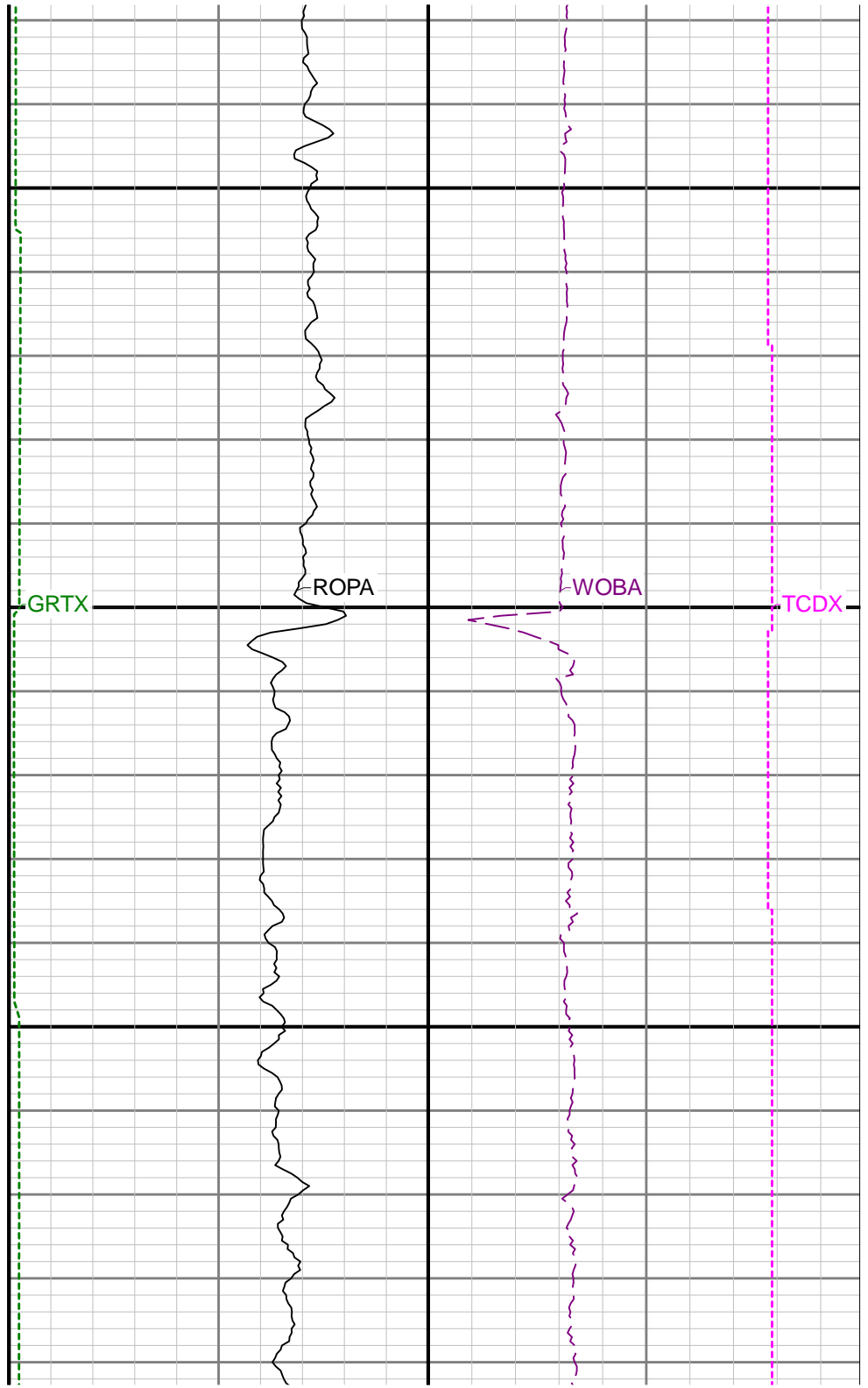
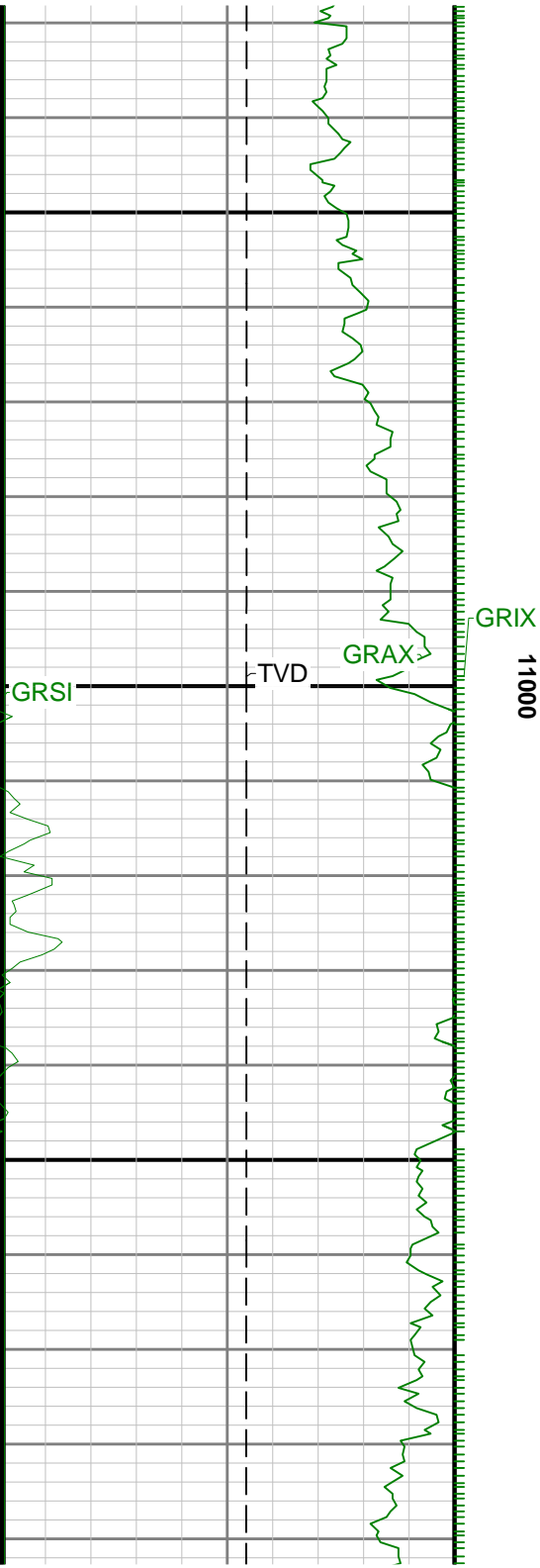




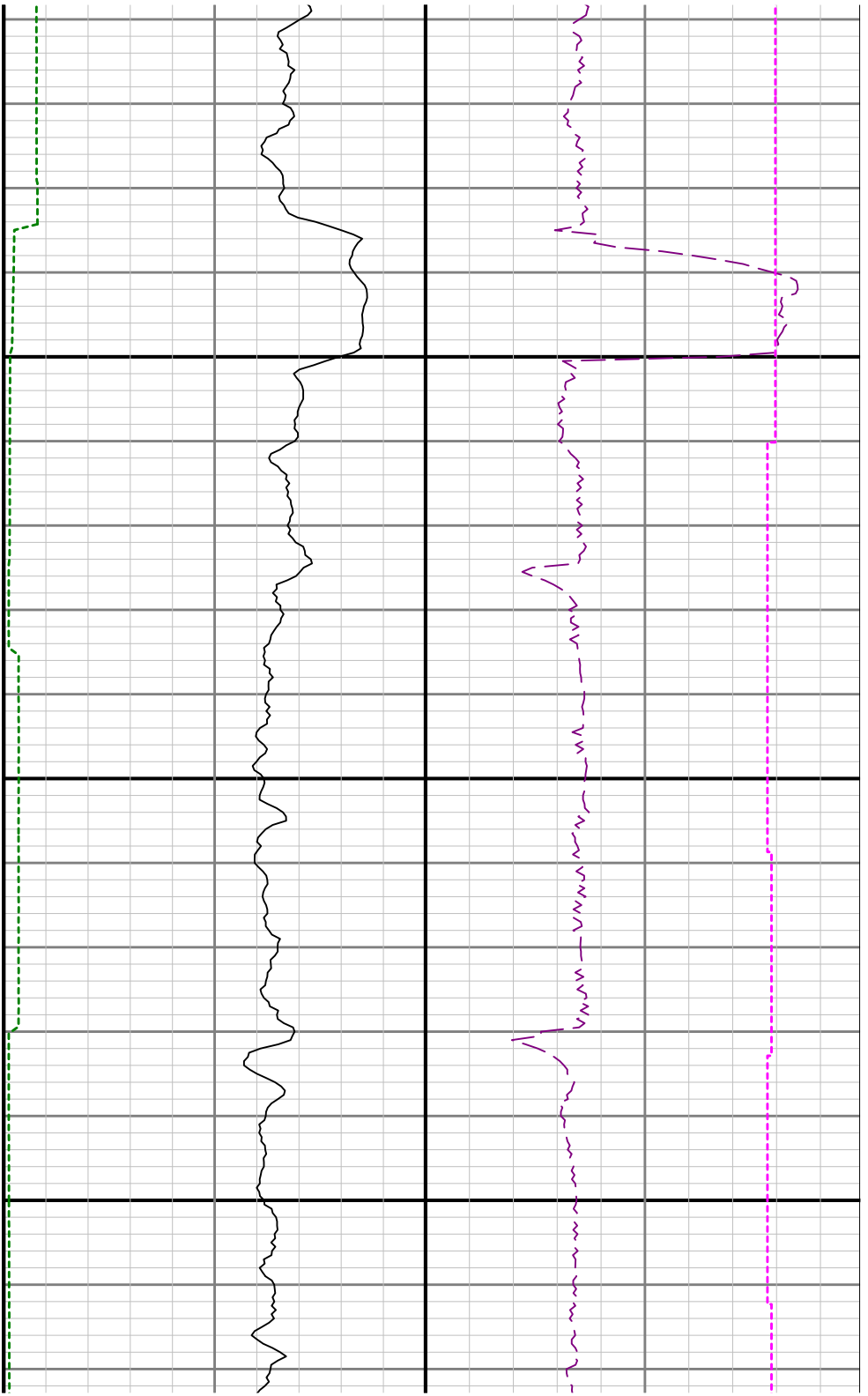






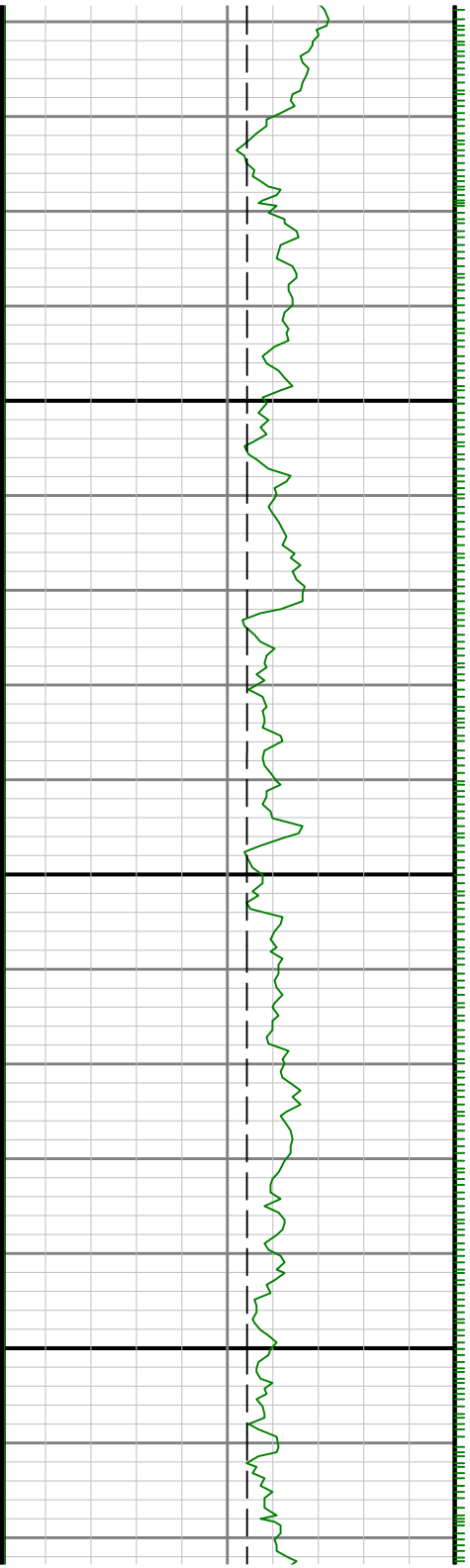






11300

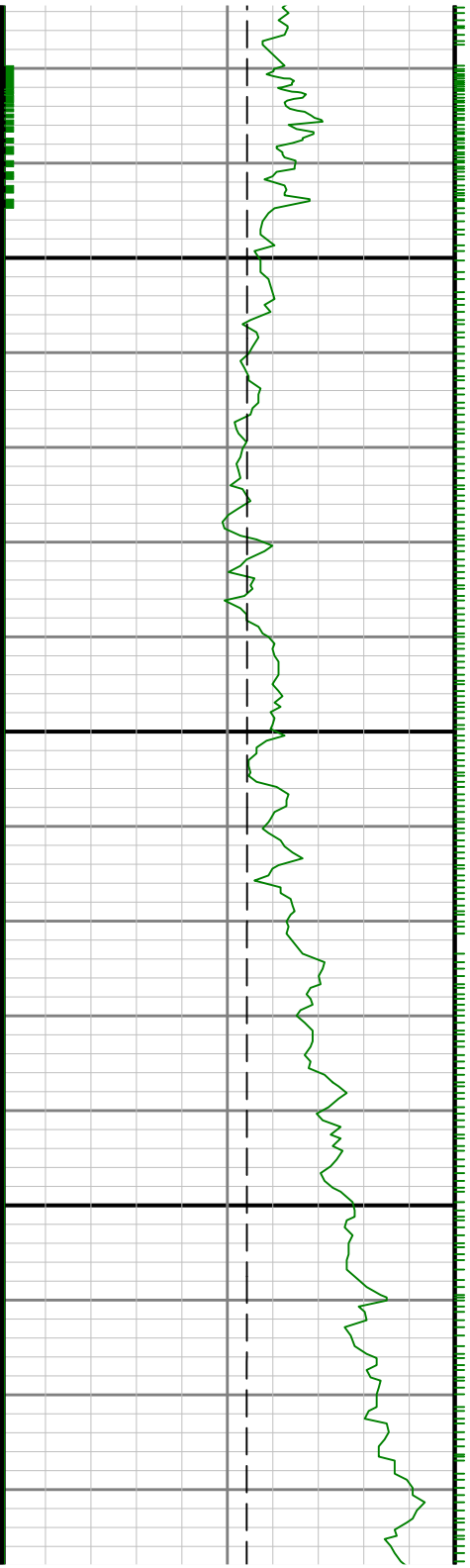
11400

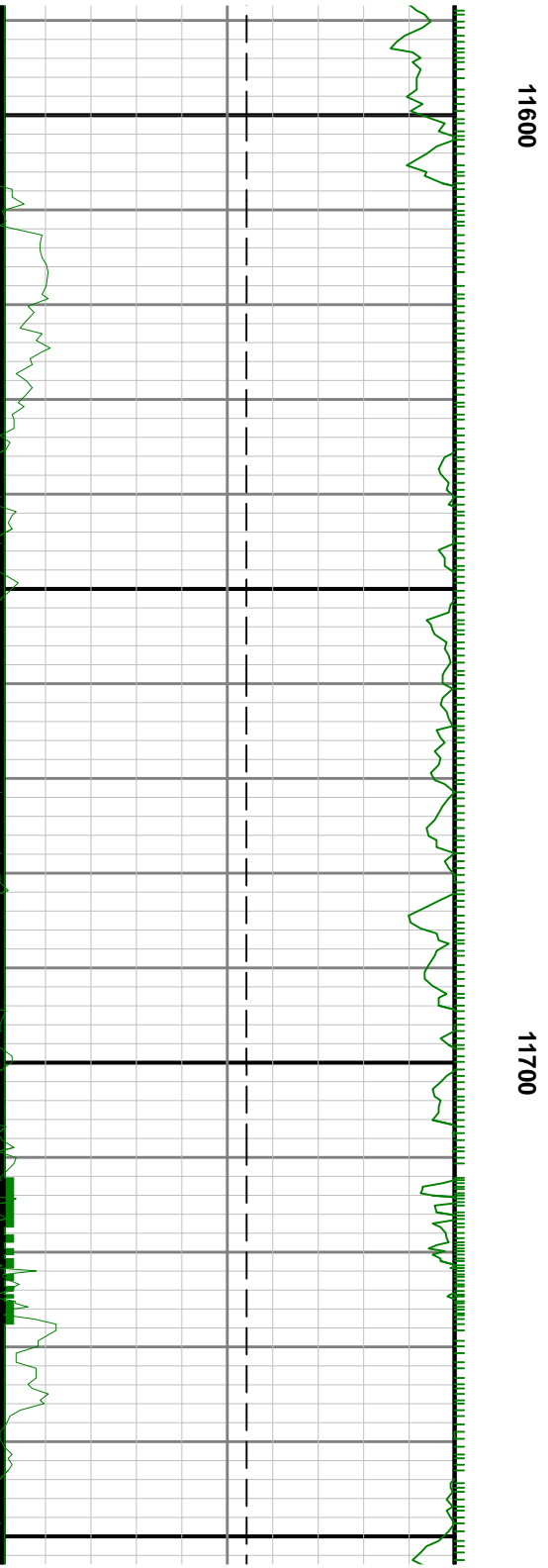


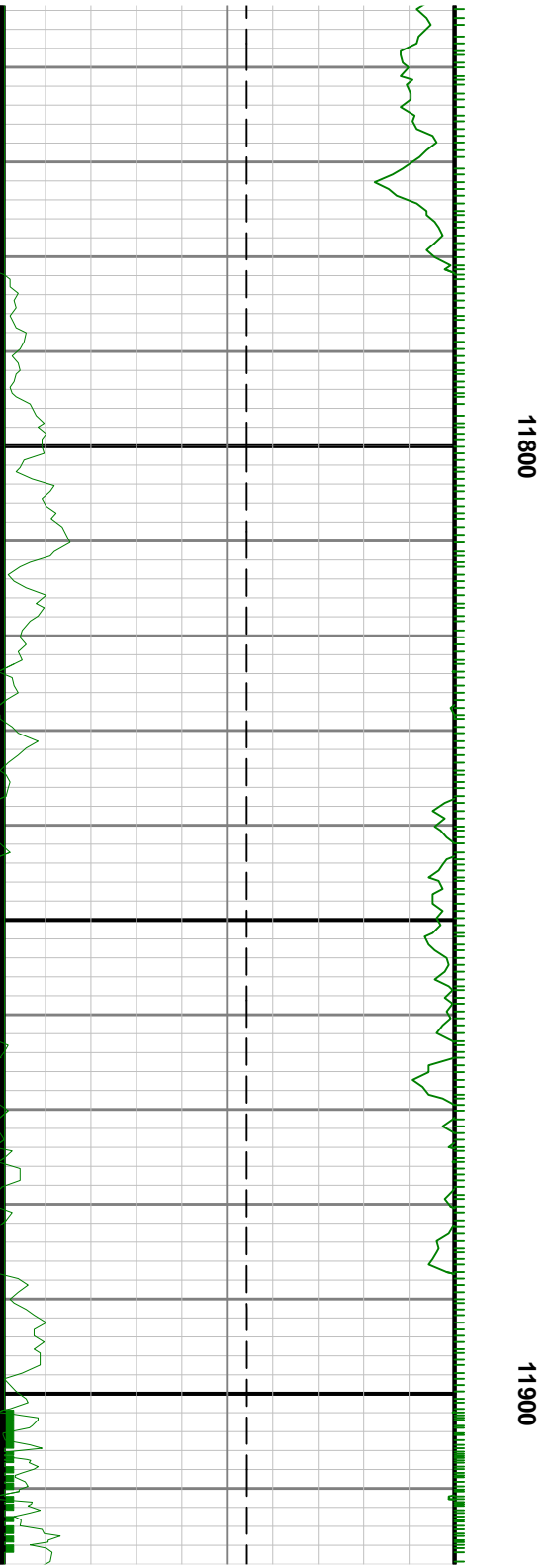


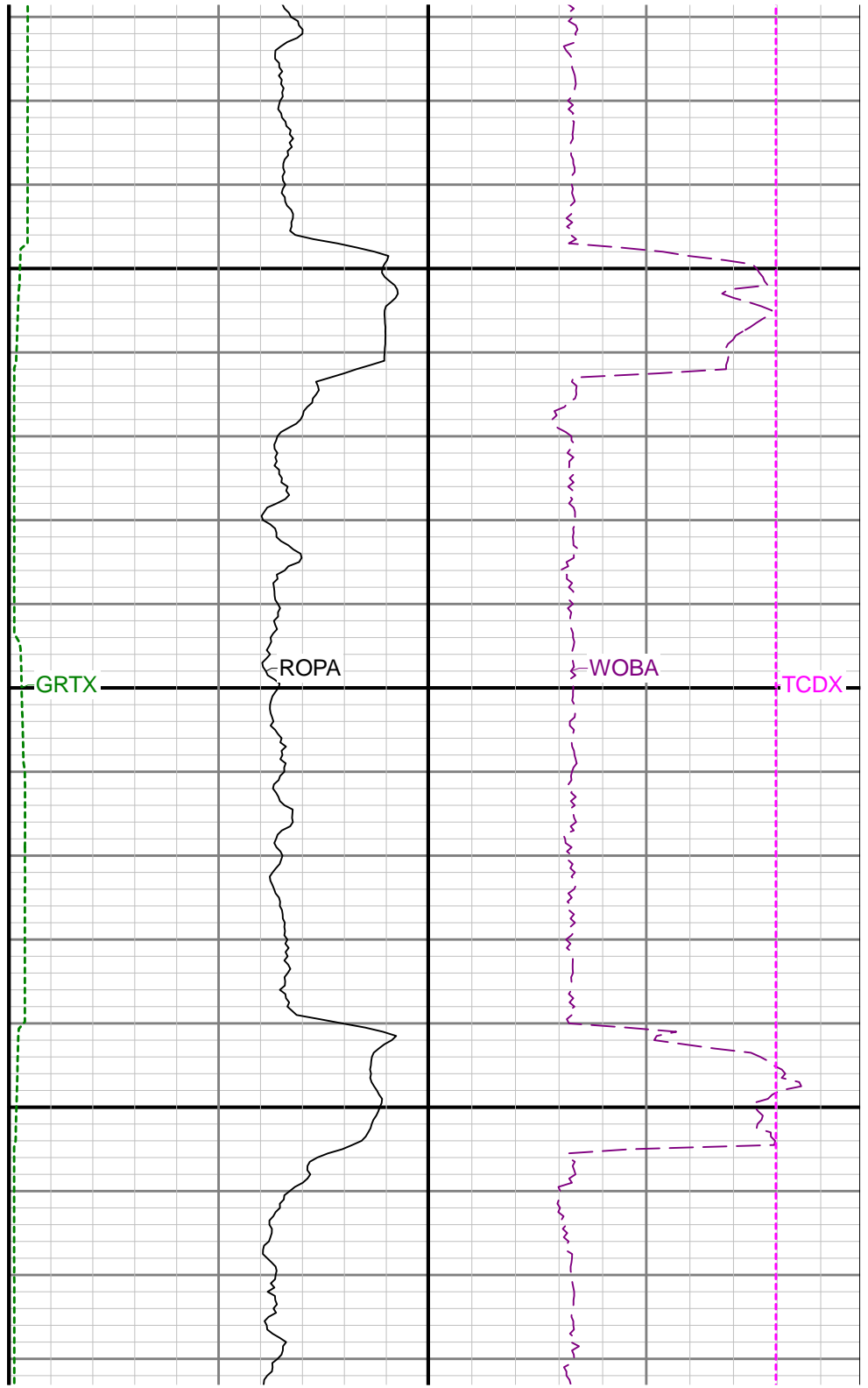
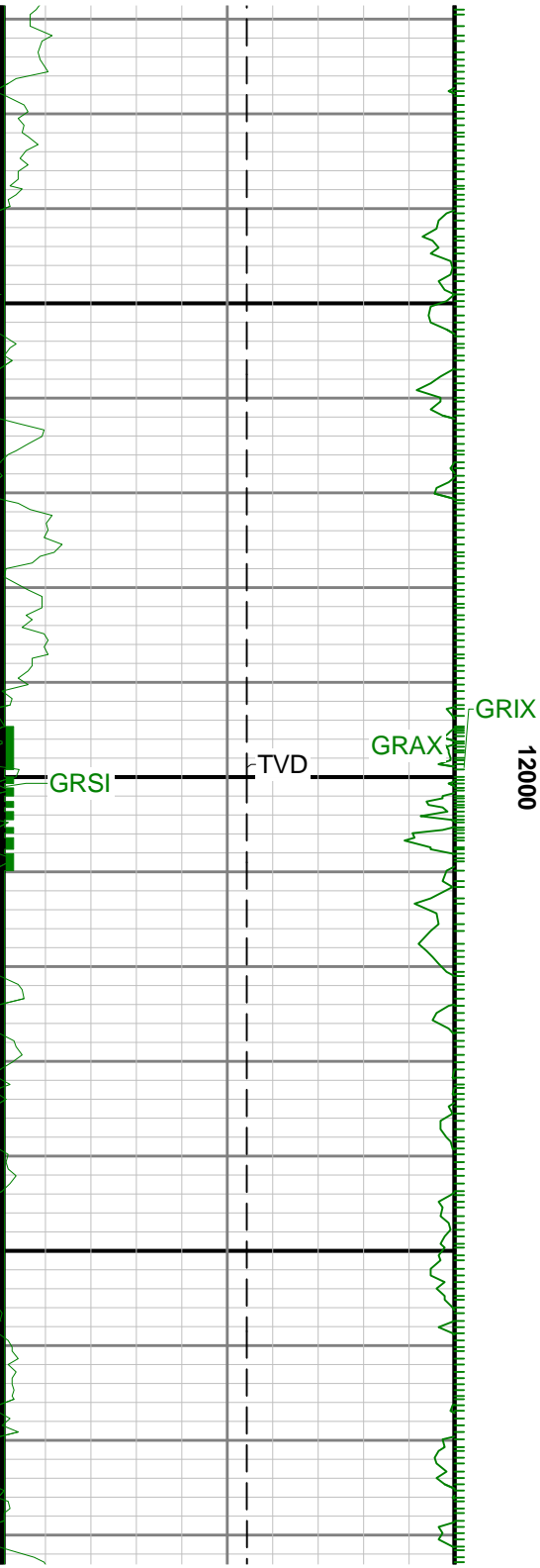


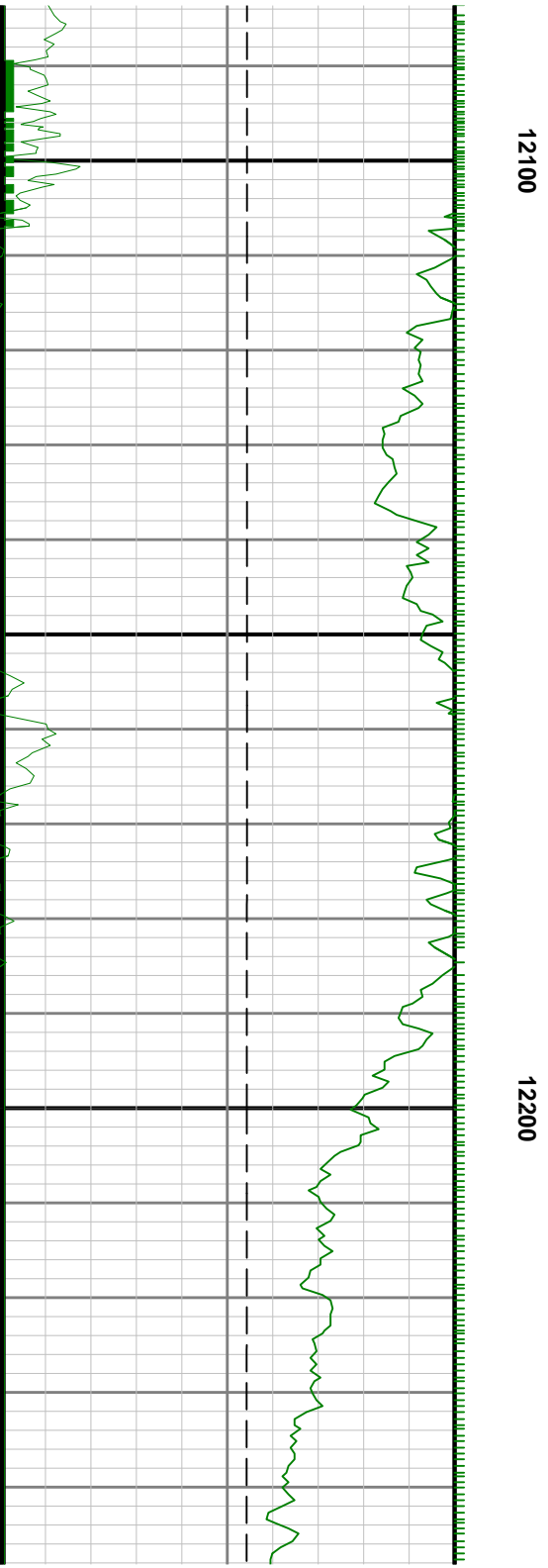
11500

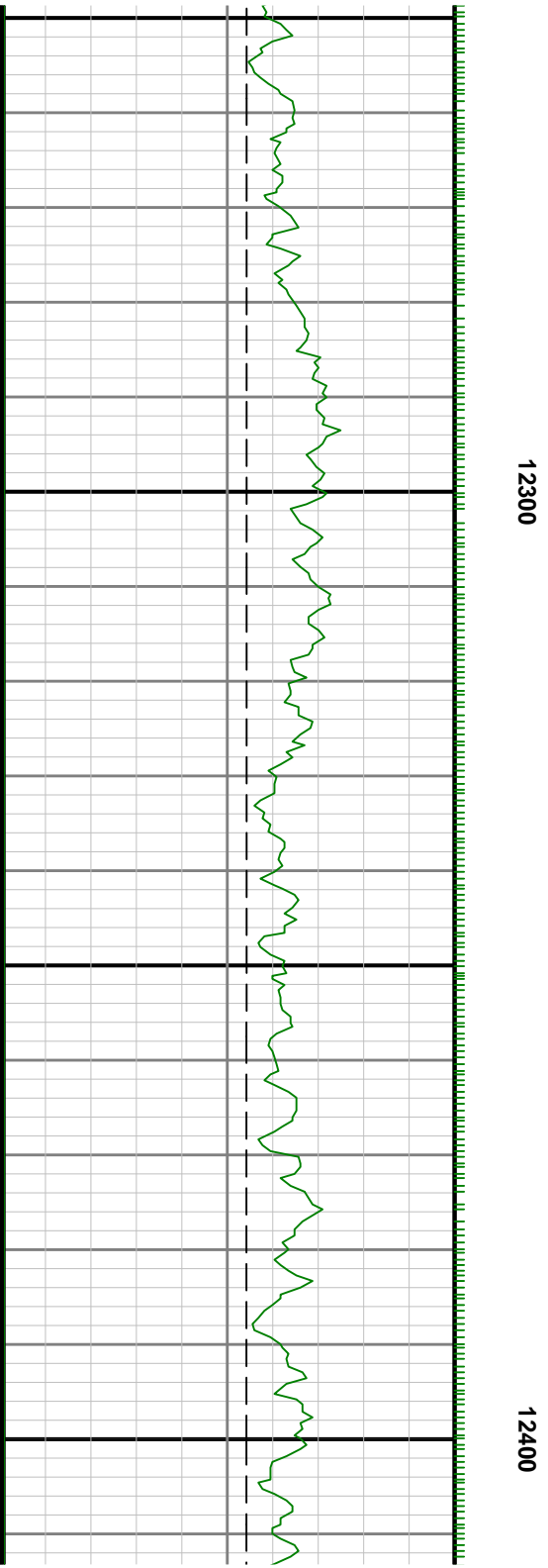
















See Remark 2



[illegible]