

KERR-MCGEE OIL & GAS ONSHORE LP (WA)

Location: COLORADO Slot: SLOT#21 SARCHET 36N-20HZ (394'FNL & 2377'FEL, SEC.20)
Field: WELD COUNTY (UTM/TRUE NORTH) Well: SARCHET 36N-20HZ
Facility: SEC.20-T2N-R65W Wellbore: SARCHET 36N-20HZ PWB

Plot reference wellpath is SARCHET 36N-20HZ (REV-C.0) PWP

True vertical depths are referenced to XTREME 24 (16'KB) (RKB)

Grid System: NAD83 / UTM Zone 13 North, US feet

Measured depths are referenced to XTREME 24 (16'KB) (RKB)

North Reference: True north

XTREME 24 (16'KB) (RKB) to Mean Sea Level: 4930 feet

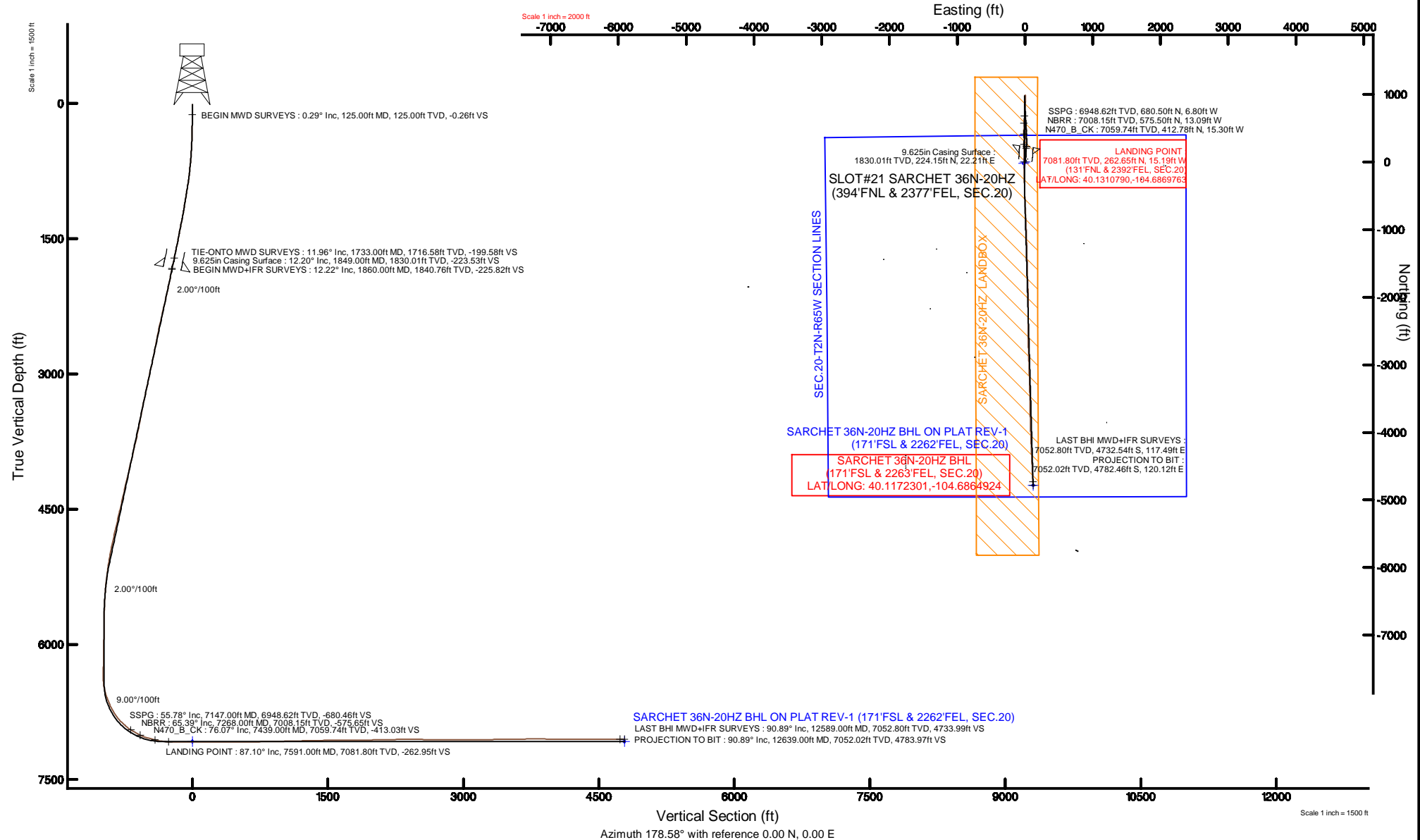
Scale: True distance

Mean Sea Level to Mud line (At Slot: SLOT#21 SARCHET 36N-20HZ (394'FNL & 2377'FEL, SEC.20)): 0 feet

Depths are in feet

Coordinates are in feet referenced to Slot

Created by: amarc on 23/Sep/2015





Actual Wellpath Report

SARCHET 36N-20HZ AWP

Page 1 of 6



REFERENCE WELLPATH IDENTIFICATION

Operator	KERR-MCGEE OIL & GAS ONSHORE LP (WA)	Slot	SLOT#21 SARCHET 36N-20HZ (394'FNL & 2377'FEL, SEC.20)
Area	COLORADO	Well	SARCHET 36N-20HZ
Field	WELD COUNTY (UTM/TRUE NORTH)	Wellbore	SARCHET 36N-20HZ AWB <12639>
Facility	SEC.20-T2N-R65W		

REPORT SETUP INFORMATION

Projection System	NAD83 / UTM Zone 13 North, US feet	Software System	WellArchitect® 4.0.0
North Reference	True	User	Amarcar
Scale	0.999609	Report Generated	23/Sep/2015 at 13:32
Convergence at slot	0.20° East	Database/Source file	KERR MCGEE UTM/SARCHET_36N-20HZ_AWB__12639_.xml

WELLPATH LOCATION

	Local coordinates		Grid coordinates		Geographic coordinates	
	North[ft]	East[ft]	Easting[US ft]	Northing[US ft]	Latitude	Longitude
Slot Location	4466.42	1758.41	1727927.59	14574356.75	40°07'49.289"N	104°41'12.919"W
Facility Reference Pt			1726185.29	14569886.05	40°07'05.152"N	104°41'35.557"W
Field Reference Pt			1698235.31	14552047.82	40°04'09.600"N	104°47'36.000"W

WELLPATH DATUM

Calculation method	Minimum curvature	XTREME 24 (16'KB) (RKB) to Facility Vertical Datum	4930.00ft
Horizontal Reference Pt	Slot	XTREME 24 (16'KB) (RKB) to Mean Sea Level	4930.00ft
Vertical Reference Pt	XTREME 24 (16'KB) (RKB)	XTREME 24 (16'KB) (RKB) to Mud Line at Slot (SLOT#21 SARCHET 36N-20HZ (394'FNL & 2377'FEL, SEC.20))	4930.00ft
MD Reference Pt	XTREME 24 (16'KB) (RKB)	Section Origin	N 0.00, E 0.00 ft
Field Vertical Reference	Mean Sea Level	Section Azimuth	178.58°

REFERENCE WELLPATH IDENTIFICATION			
Operator	KERR-MCGEE OIL & GAS ONSHORE LP (WA)	Slot	SLOT#21 SARCHET 36N-20HZ (394'FNL & 2377'FEL, SEC.20)
Area	COLORADO	Well	SARCHET 36N-20HZ
Field	WELD COUNTY (UTM/TRUE NORTH)	Wellbore	SARCHET 36N-20HZ AWB <12639>
Facility	SEC.20-T2N-R65W		

WELLPATH DATA (143 stations) † = interpolated/extrapolated station										
MD [ft]	Inclination [°]	Azimuth [°]	TVD [ft]	Vert Sect [ft]	North [ft]	East [ft]	Latitude	Longitude	DLS [°/100ft]	Comments
0.00†	0.000	339.370	0.00	0.00	0.00	0.00	40°07'49.289"N	104°41'12.919"W	0.00	
16.00	0.000	339.370	16.00	0.00	0.00	0.00	40°07'49.289"N	104°41'12.919"W	0.00	
125.00	0.290	339.370	125.00	-0.26	0.26	-0.10	40°07'49.292"N	104°41'12.920"W	0.27	BEGIN MWD SURVEYS
214.00	0.200	309.130	214.00	-0.57	0.57	-0.30	40°07'49.295"N	104°41'12.923"W	0.17	
304.00	1.160	354.610	303.99	-1.59	1.57	-0.50	40°07'49.305"N	104°41'12.925"W	1.14	
382.00	2.060	9.010	381.96	-3.75	3.74	-0.36	40°07'49.326"N	104°41'12.924"W	1.26	
472.00	3.220	12.970	471.86	-7.79	7.80	0.46	40°07'49.366"N	104°41'12.913"W	1.30	
562.00	3.940	19.020	561.69	-13.14	13.19	2.04	40°07'49.419"N	104°41'12.893"W	0.90	
652.00	5.130	12.710	651.40	-19.94	20.04	3.93	40°07'49.487"N	104°41'12.868"W	1.43	
743.00	6.260	9.440	741.95	-28.75	28.90	5.64	40°07'49.575"N	104°41'12.846"W	1.29	
833.00	7.610	7.450	831.29	-39.46	39.65	7.22	40°07'49.681"N	104°41'12.826"W	1.52	
923.00	9.060	7.960	920.34	-52.34	52.58	8.97	40°07'49.809"N	104°41'12.804"W	1.61	
1013.00	9.390	6.490	1009.18	-66.61	66.89	10.78	40°07'49.950"N	104°41'12.780"W	0.45	
1103.00	8.970	7.120	1098.02	-80.82	81.15	12.48	40°07'50.091"N	104°41'12.758"W	0.48	
1193.00	9.820	0.670	1186.82	-95.43	95.79	13.44	40°07'50.236"N	104°41'12.746"W	1.50	
1283.00	11.250	358.400	1275.30	-111.88	112.24	13.28	40°07'50.398"N	104°41'12.748"W	1.65	
1373.00	11.120	2.440	1363.59	-129.31	129.69	13.41	40°07'50.571"N	104°41'12.746"W	0.88	
1463.00	10.710	1.790	1451.96	-146.32	146.72	14.04	40°07'50.739"N	104°41'12.738"W	0.48	
1553.00	11.310	5.190	1540.31	-163.44	163.86	15.10	40°07'50.908"N	104°41'12.725"W	0.98	
1643.00	11.730	5.520	1628.49	-181.29	181.76	16.78	40°07'51.085"N	104°41'12.703"W	0.47	
1733.00	11.960	7.420	1716.58	-199.58	200.11	18.86	40°07'51.267"N	104°41'12.676"W	0.50	TIE-ONTO MWD SURVEYS
1860.00	12.220	8.540	1840.76	-225.82	226.45	22.56	40°07'51.527"N	104°41'12.629"W	0.28	BEGIN MWD+IFR SURVEYS
1954.00	11.360	4.670	1932.78	-244.83	245.52	24.79	40°07'51.715"N	104°41'12.600"W	1.24	
2049.00	12.410	358.680	2025.74	-264.34	265.05	25.32	40°07'51.908"N	104°41'12.593"W	1.70	
2144.00	11.880	357.570	2118.62	-284.33	285.03	24.67	40°07'52.106"N	104°41'12.601"W	0.61	
2238.00	13.170	354.010	2210.38	-304.68	305.34	23.14	40°07'52.306"N	104°41'12.621"W	1.60	
2333.00	12.440	353.020	2303.02	-325.65	326.26	20.76	40°07'52.513"N	104°41'12.652"W	0.80	
2428.00	13.180	353.400	2395.65	-346.62	347.18	18.28	40°07'52.720"N	104°41'12.684"W	0.78	
2523.00	12.370	353.880	2488.30	-367.55	368.06	15.95	40°07'52.926"N	104°41'12.714"W	0.86	
2617.00	10.700	2.180	2580.40	-386.29	386.79	15.21	40°07'53.111"N	104°41'12.723"W	2.50	
2712.00	10.750	1.580	2673.74	-403.94	404.46	15.79	40°07'53.286"N	104°41'12.716"W	0.13	
2807.00	11.240	4.490	2767.00	-422.00	422.55	16.75	40°07'53.465"N	104°41'12.703"W	0.78	
2901.00	12.750	1.930	2858.95	-441.47	442.05	17.82	40°07'53.657"N	104°41'12.690"W	1.70	
2996.00	12.100	1.520	2951.72	-461.88	462.48	18.44	40°07'53.859"N	104°41'12.682"W	0.69	
3090.00	11.350	0.350	3043.76	-480.96	481.58	18.76	40°07'54.048"N	104°41'12.678"W	0.84	
3185.00	12.370	355.560	3136.73	-500.47	501.07	18.03	40°07'54.241"N	104°41'12.687"W	1.49	
3280.00	12.130	356.330	3229.57	-520.61	521.18	16.60	40°07'54.439"N	104°41'12.705"W	0.31	
3375.00	12.500	356.250	3322.38	-540.85	541.40	15.29	40°07'54.639"N	104°41'12.722"W	0.39	
3469.00	10.570	351.790	3414.48	-559.58	560.08	13.39	40°07'54.824"N	104°41'12.747"W	2.26	
3564.00	10.360	354.300	3507.90	-576.75	577.21	11.30	40°07'54.993"N	104°41'12.774"W	0.53	
3659.00	11.310	354.620	3601.21	-594.56	594.98	9.58	40°07'55.169"N	104°41'12.796"W	1.00	
3753.00	12.560	354.890	3693.17	-613.96	614.34	7.80	40°07'55.360"N	104°41'12.819"W	1.33	
3848.00	13.260	356.270	3785.77	-635.15	635.50	6.17	40°07'55.569"N	104°41'12.840"W	0.81	
3942.00	12.210	356.830	3877.46	-655.86	656.18	4.92	40°07'55.773"N	104°41'12.856"W	1.12	
4037.00	13.190	357.160	3970.13	-676.74	677.04	3.83	40°07'55.980"N	104°41'12.870"W	1.03	

REFERENCE WELLPATH IDENTIFICATION

Operator	KERR-MCGEE OIL & GAS ONSHORE LP (WA)	Slot	SLOT#21 SARCHET 36N-20HZ (394°FNL & 2377°FEL, SEC.20)
Area	COLORADO	Well	SARCHET 36N-20HZ
Field	WELD COUNTY (UTM/TRUE NORTH)	Wellbore	SARCHET 36N-20HZ AWP <12639>
Facility	SEC.20-T2N-R65W		

WELLPATH DATA (143 stations) † = interpolated/extrapolated station

MD [ft]	Inclination [°]	Azimuth [°]	TVD [ft]	Vert Sect [ft]	North [ft]	East [ft]	Latitude	Longitude	DLS [°/100ft]	Comments
4132.00	13.680	0.930	4062.53	-698.80	699.10	3.47	40°07'56.198"N	104°41'12.874"W	1.06	
4227.00	13.610	359.400	4154.85	-721.20	721.51	3.54	40°07'56.419"N	104°41'12.873"W	0.39	
4322.00	12.750	357.120	4247.35	-742.85	743.15	2.90	40°07'56.633"N	104°41'12.882"W	1.06	
4416.00	12.100	351.220	4339.15	-762.99	763.25	0.87	40°07'56.832"N	104°41'12.908"W	1.52	
4511.00	12.790	356.430	4431.92	-783.38	783.59	-1.30	40°07'57.032"N	104°41'12.936"W	1.39	
4605.00	13.430	352.990	4523.47	-804.64	804.81	-3.28	40°07'57.242"N	104°41'12.961"W	1.07	
4700.00	12.410	359.890	4616.07	-825.83	825.97	-4.65	40°07'57.451"N	104°41'12.979"W	1.94	
4794.00	13.430	4.410	4707.69	-846.79	846.95	-3.83	40°07'57.659"N	104°41'12.968"W	1.53	
4889.00	12.300	3.010	4800.31	-867.85	868.06	-2.45	40°07'57.867"N	104°41'12.951"W	1.23	
4984.00	12.490	0.150	4893.10	-888.21	888.43	-1.89	40°07'58.069"N	104°41'12.943"W	0.68	
5079.00	10.810	0.050	4906.13	-907.39	907.62	-1.86	40°07'58.258"N	104°41'12.943"W	1.77	
5173.00	8.540	2.510	5078.79	-923.16	923.41	-1.54	40°07'58.414"N	104°41'12.939"W	2.45	
5267.00	8.170	359.670	5171.79	-936.80	937.06	-1.28	40°07'58.549"N	104°41'12.935"W	0.59	
5362.00	6.780	355.890	5265.99	-949.15	949.40	-1.72	40°07'58.671"N	104°41'12.941"W	1.55	
5457.00	4.910	352.820	5360.49	-958.80	959.03	-2.63	40°07'58.766"N	104°41'12.953"W	2.00	
5552.00	3.710	349.580	5455.22	-965.88	966.09	-3.69	40°07'58.836"N	104°41'12.967"W	1.29	
5646.00	2.700	351.280	5549.07	-971.08	971.27	-4.58	40°07'58.887"N	104°41'12.978"W	1.08	
5741.00	1.770	4.200	5644.00	-974.76	974.94	-4.81	40°07'58.923"N	104°41'12.981"W	1.11	
5836.00	1.520	38.420	5738.96	-977.19	977.39	-3.92	40°07'58.948"N	104°41'12.969"W	1.05	
5931.00	0.980	71.740	5833.94	-978.39	978.63	-2.36	40°07'58.960"N	104°41'12.949"W	0.93	
6214.00	1.470	41.500	6116.88	-981.75	982.11	2.34	40°07'58.994"N	104°41'12.889"W	0.28	
6404.00	1.330	40.630	6306.82	-985.18	985.61	5.39	40°07'59.029"N	104°41'12.850"W	0.07	
6499.00	1.910	146.710	6401.80	-984.65	985.12	6.98	40°07'59.024"N	104°41'12.829"W	2.75	
6594.00	12.460	175.150	6495.93	-973.04	973.55	8.72	40°07'58.910"N	104°41'12.807"W	11.39	
6688.00	20.270	180.410	6586.06	-946.60	947.12	9.46	40°07'58.649"N	104°41'12.797"W	8.45	
6783.00	23.710	184.200	6674.14	-911.13	911.61	7.94	40°07'58.298"N	104°41'12.817"W	3.92	
6878.00	32.300	187.870	6757.94	-866.99	867.33	3.06	40°07'57.860"N	104°41'12.880"W	9.22	
6972.00	41.470	181.880	6833.07	-810.99	811.21	-1.41	40°07'57.305"N	104°41'12.937"W	10.47	
7067.00	49.080	181.970	6899.87	-743.66	743.80	-3.68	40°07'56.639"N	104°41'12.966"W	8.01	
7147.00†	55.785	183.602	6948.62	-680.46	680.50	-6.80	40°07'56.014"N	104°41'13.007"W	8.53	SSPG
7161.00	56.960	183.860	6956.38	-668.85	668.87	-7.56	40°07'55.899"N	104°41'13.016"W	8.53	
7256.00	64.160	183.080	7003.04	-586.48	586.34	-12.55	40°07'55.083"N	104°41'13.081"W	7.61	
7268.00†	65.393	182.716	7008.15	-575.65	575.50	-13.09	40°07'54.976"N	104°41'13.088"W	10.63	NBRR
7351.00	73.940	180.370	7036.97	-498.00	497.78	-15.14	40°07'54.208"N	104°41'13.114"W	10.63	
7439.00†	76.070	179.842	7059.74	-413.03	412.78	-15.30	40°07'53.368"N	104°41'13.116"W	2.49	N470_B_CK
7446.00	76.240	179.800	7061.41	-406.24	405.99	-15.28	40°07'53.301"N	104°41'13.116"W	2.49	
7541.00	83.830	180.050	7077.84	-312.77	312.49	-15.16	40°07'52.377"N	104°41'13.114"W	7.99	
7591.00†	87.096	180.018	7081.80	-262.95	262.65	-15.19	40°07'51.885"N	104°41'13.115"W	6.53	LANDING POINT
7635.00	89.970	179.990	7082.92	-218.98	218.67	-15.19	40°07'51.450"N	104°41'13.115"W	6.53	
7730.00	89.540	179.380	7083.33	-124.00	123.67	-14.67	40°07'50.511"N	104°41'13.108"W	0.79	
7825.00	90.120	179.630	7083.61	-29.01	28.68	-13.85	40°07'49.572"N	104°41'13.097"W	0.66	
7872.00	90.340	178.990	7083.42	17.98	-18.32	-13.28	40°07'49.108"N	104°41'13.090"W	1.44	
7919.00	90.340	179.710	7083.14	64.98	-65.31	-12.75	40°07'48.644"N	104°41'13.083"W	1.53	
7966.00	90.280	179.680	7082.89	111.97	-112.31	-12.50	40°07'48.179"N	104°41'13.080"W	0.14	
8014.00	90.520	179.330	7082.55	159.96	-160.31	-12.08	40°07'47.705"N	104°41'13.075"W	0.88	

REFERENCE WELLPATH IDENTIFICATION

Operator	KERR-MCGEE OIL & GAS ONSHORE LP (WA)	Slot	SLOT#21 SARCHET 36N-20HZ (394°FNL & 2377°FEL, SEC.20)
Area	COLORADO	Well	SARCHET 36N-20HZ
Field	WELD COUNTY (UTM/TRUE NORTH)	Wellbore	SARCHET 36N-20HZ AWP <12639>
Facility	SEC.20-T2N-R65W		

WELLPATH DATA (143 stations)

MD [ft]	Inclination [°]	Azimuth [°]	TVD [ft]	Vert Sect [ft]	North [ft]	East [ft]	Latitude	Longitude	DLS [°/100ft]	Comments
8061.00	90.620	178.910	7082.09	206.96	-207.30	-11.36	40°07'47.240"N	104°41'13.065"W	0.92	
8109.00	90.520	178.580	7081.61	254.95	-255.29	-10.31	40°07'46.766"N	104°41'13.052"W	0.72	
8156.00	90.280	178.440	7081.28	301.95	-302.27	-9.09	40°07'46.302"N	104°41'13.036"W	0.59	
8203.00	90.220	178.160	7081.07	348.95	-349.25	-7.69	40°07'45.838"N	104°41'13.018"W	0.61	
8250.00	90.310	178.060	7080.86	395.95	-396.22	-6.14	40°07'45.373"N	104°41'12.998"W	0.29	
8298.00	90.090	178.010	7080.69	443.95	-444.20	-4.50	40°07'44.899"N	104°41'12.977"W	0.47	
8393.00	90.090	177.820	7080.54	538.94	-539.13	-1.04	40°07'43.961"N	104°41'12.932"W	0.20	
8487.00	89.720	177.320	7080.70	632.93	-633.05	2.94	40°07'43.033"N	104°41'12.881"W	0.66	
8582.00	90.400	177.430	7080.60	727.90	-727.95	7.29	40°07'42.095"N	104°41'12.825"W	0.73	
8677.00	90.920	177.980	7079.50	822.89	-822.86	11.10	40°07'41.157"N	104°41'12.776"W	0.80	
8772.00	91.200	177.820	7077.74	917.86	-917.78	14.58	40°07'40.219"N	104°41'12.731"W	0.34	
8867.00	91.420	177.200	7075.57	1012.82	-1012.67	18.71	40°07'39.282"N	104°41'12.678"W	0.69	
8962.00	91.290	178.460	7073.33	1107.78	-1107.57	22.30	40°07'38.344"N	104°41'12.632"W	1.33	
9057.00	92.120	178.040	7070.50	1202.74	-1202.48	25.20	40°07'37.406"N	104°41'12.595"W	0.98	
9151.00	90.860	178.830	7068.06	1296.70	-1296.41	27.77	40°07'36.478"N	104°41'12.562"W	1.58	
9246.00	91.110	178.580	7066.42	1391.69	-1391.38	29.91	40°07'35.539"N	104°41'12.534"W	0.37	
9341.00	91.360	177.940	7064.38	1486.67	-1486.31	32.80	40°07'34.601"N	104°41'12.497"W	0.72	
9435.00	91.420	179.170	7062.09	1580.64	-1580.25	35.17	40°07'33.673"N	104°41'12.466"W	1.31	
9530.00	89.660	178.750	7061.20	1675.63	-1675.23	36.89	40°07'32.734"N	104°41'12.444"W	1.90	
9625.00	89.910	177.880	7061.56	1770.62	-1770.18	39.69	40°07'31.796"N	104°41'12.408"W	0.95	
9720.00	90.310	176.800	7061.37	1865.60	-1865.08	44.09	40°07'30.858"N	104°41'12.351"W	1.21	
9814.00	90.460	178.620	7060.74	1959.58	-1959.00	47.85	40°07'29.930"N	104°41'12.303"W	1.94	
9909.00	90.800	180.280	7059.70	2054.56	-2053.99	48.76	40°07'28.991"N	104°41'12.291"W	1.78	
10004.00	91.260	180.540	7057.99	2149.50	-2148.97	48.08	40°07'28.053"N	104°41'12.300"W	0.56	
10098.00	91.730	180.570	7055.54	2243.41	-2242.93	47.17	40°07'27.124"N	104°41'12.312"W	0.50	
10193.00	89.750	179.130	7054.31	2338.37	-2337.91	47.42	40°07'26.185"N	104°41'12.309"W	2.58	
10288.00	90.370	179.380	7054.21	2433.37	-2432.91	48.66	40°07'25.247"N	104°41'12.293"W	0.70	
10382.00	88.800	179.950	7054.89	2527.34	-2526.90	49.21	40°07'24.318"N	104°41'12.286"W	1.78	
10477.00	89.050	180.110	7056.67	2622.30	-2621.88	49.16	40°07'23.379"N	104°41'12.286"W	0.31	
10571.00	90.030	178.350	7057.43	2716.28	-2715.87	50.42	40°07'22.451"N	104°41'12.270"W	2.14	
10666.00	89.850	178.720	7057.53	2811.28	-2810.83	52.85	40°07'21.512"N	104°41'12.239"W	0.43	
10761.00	89.630	177.290	7057.96	2906.27	-2905.77	56.15	40°07'20.574"N	104°41'12.196"W	1.52	
10855.00	90.370	178.100	7057.96	3000.26	-2999.70	59.94	40°07'19.646"N	104°41'12.147"W	1.17	
10950.00	90.490	178.040	7057.25	3095.25	-3094.64	63.13	40°07'18.707"N	104°41'12.106"W	0.14	
11045.00	90.400	178.410	7056.51	3190.25	-3189.59	66.08	40°07'17.769"N	104°41'12.068"W	0.40	
11139.00	90.430	178.660	7055.83	3284.25	-3283.56	68.48	40°07'16.841"N	104°41'12.037"W	0.27	
11234.00	90.680	178.610	7054.91	3379.24	-3378.53	70.74	40°07'15.902"N	104°41'12.008"W	0.27	
11329.00	90.960	178.930	7053.55	3474.23	-3473.49	72.78	40°07'14.964"N	104°41'11.982"W	0.45	
11423.00	91.200	179.100	7051.78	3568.21	-3567.46	74.40	40°07'14.035"N	104°41'11.961"W	0.31	
11518.00	90.340	178.930	7050.50	3663.20	-3662.44	76.03	40°07'13.096"N	104°41'11.940"W	0.92	
11613.00	90.770	178.880	7049.58	3758.19	-3757.42	77.85	40°07'12.158"N	104°41'11.917"W	0.46	
11707.00	89.140	178.420	7049.65	3852.19	-3851.39	80.06	40°07'11.229"N	104°41'11.888"W	1.80	
11802.00	89.290	178.100	7050.95	3947.18	-3946.34	82.95	40°07'10.291"N	104°41'11.851"W	0.37	
11897.00	89.290	178.040	7052.13	4042.17	-4041.27	86.14	40°07'09.353"N	104°41'11.810"W	0.06	
11991.00	90.090	177.680	7052.64	4136.16	-4135.21	89.65	40°07'08.424"N	104°41'11.765"W	0.93	

REFERENCE WELLPATH IDENTIFICATION

Operator	KERR-MCGEE OIL & GAS ONSHORE LP (WA)	Slot	SLOT#21 SARCHET 36N-20HZ (394'FNL & 2377'FEL, SEC.20)
Area	COLORADO	Well	SARCHET 36N-20HZ
Field	WELD COUNTY (UTM/TRUE NORTH)	Wellbore	SARCHET 36N-20HZ AWB <12639>
Facility	SEC.20-T2N-R65W		

WELLPATH DATA (143 stations)

MD [ft]	Inclination [°]	Azimuth [°]	TVD [ft]	Vert Sect [ft]	North [ft]	East [ft]	Latitude	Longitude	DLS [°/100ft]	Comments
12086.00	90.620	177.320	7052.05	4231.14	-4230.11	93.80	40°07'07.487"N	104°41'11.712"W	0.67	
12181.00	89.320	177.550	7052.10	4326.12	-4325.02	98.05	40°07'06.549"N	104°41'11.657"W	1.39	
12276.00	90.460	177.450	7052.28	4421.10	-4419.92	102.19	40°07'05.611"N	104°41'11.604"W	1.20	
12370.00	89.290	177.020	7052.49	4515.07	-4513.81	106.73	40°07'04.683"N	104°41'11.545"W	1.33	
12465.00	89.450	177.130	7053.53	4610.03	-4608.68	111.58	40°07'03.745"N	104°41'11.483"W	0.20	
12560.00	90.890	177.440	7053.25	4705.01	-4703.57	116.08	40°07'02.808"N	104°41'11.425"W	1.55	
12589.00	90.890	176.980	7052.80	4733.99	-4732.54	117.49	40°07'02.522"N	104°41'11.407"W	1.59	LAST BHI MWD+IFR SURVEYS
12639.00	90.890	176.980	7052.02	4783.97	-4782.46	120.12	40°07'02.028"N	104°41'11.373"W	0.00	PROJECTION TO BIT

HOLE & CASING SECTIONS - Ref Wellbore: SARCHET 36N-20HZ AWB <12639> Ref Wellpath: SARCHET 36N-20HZ AWP

String/Diameter	Start MD [ft]	End MD [ft]	Interval [ft]	Start TVD [ft]	End TVD [ft]	Start N/S [ft]	Start E/W [ft]	End N/S [ft]	End E/W [ft]
13.5in Open Hole	16.00	1859.00	1843.00	16.00	1839.78	0.00	0.00	226.24	22.53
9.625in Casing Surface	16.00	1849.00	1833.00	16.00	1830.01	0.00	0.00	224.15	22.21
7.875in Open Hole	1859.00	12639.00	10780.00	1839.78	7052.02	226.24	22.53	-4782.46	120.12

TARGETS

Name	TVD [ft]	North [ft]	East [ft]	Grid East [US ft]	Grid North [US ft]	Latitude	Longitude	Shape
SEC.20-T2N-R65W SECTION LINES	4930.00	-22.24	-20.15	1727907.53	14574334.44	40°07'49.069"N	104°41'13.178"W	polygon
SARCHET 36N-20HZ LANDBOX	7078.00	-0.02	-0.02	1727927.58	14574356.73	40°07'49.289"N	104°41'12.919"W	polygon
SARCHET 36N-20HZ BHL ON PLAT REV-1 (171'FSL & 2262'FEL, SEC.20)	7078.00	-4782.48	120.81	1728065.19	14569576.60	40°07'02.028"N	104°41'11.364"W	point

WELLPATH COMPOSITION - Ref Wellbore: SARCHET 36N-20HZ AWB <12639> Ref Wellpath: SARCHET 36N-20HZ AWP

Start MD [ft]	End MD [ft]	Positional Uncertainty Model	Log Name/Comment	Wellbore
16.00	1733.00	Custom APC_ISCWSA REV 2 MWD	SDI MWD SURVEYS 13.5" <125-1733>	SARCHET 36N-20HZ AWB <12639>
1733.00	12589.00	Custom APC_ISCWSA REV 2 MWD+IFR1+SC (approximation)	BHI MWD+IFR SURVEYS 7.875" <1860-12589>	SARCHET 36N-20HZ AWB <12639>
12589.00	12639.00	Blind Drilling (std)	Projection to bit	SARCHET 36N-20HZ AWB <12639>

REFERENCE WELLPATH IDENTIFICATION

Operator	KERR-MCGEE OIL & GAS ONSHORE LP (WA)	Slot	SLOT#21 SARCHET 36N-20HZ (394'FNL & 2377'FEL, SEC.20)
Area	COLORADO	Well	SARCHET 36N-20HZ
Field	WELD COUNTY (UTM/TRUE NORTH)	Wellbore	SARCHET 36N-20HZ AWB <12639>
Facility	SEC.20-T2N-R65W		

WELLPATH COMMENTS

MD [ft]	Inclination [°]	Azimuth [°]	TVD [ft]	Comment
125.00	0.290	339.370	125.00	BEGIN MWD SURVEYS
1733.00	11.960	7.420	1716.58	TIE-ONTO MWD SURVEYS
1860.00	12.220	8.540	1840.76	BEGIN MWD+IFR SURVEYS
7147.00	55.785	183.602	6948.62	SSPG
7268.00	65.393	182.716	7008.15	NBRR
7439.00	76.070	179.842	7059.74	N470_B_CK
7591.00	87.096	180.018	7081.80	LANDING POINT
12589.00	90.890	176.980	7052.80	LAST BHI MWD+IFR SURVEYS
12639.00	90.890	176.980	7052.02	PROJECTION TO BIT