



Drilling Dynamics  
Gamma Ray

Scale:

1:240 MD

Company: Anadarko

Well: Sarchet 36N-20HZ

Field: DJ Basin

Driller's Depth

County: Weld County State: United States

Status:

Final Print

Surface Location:

Latitude:

Longitude:

Other Services:

Wellbore Surveys  
Directional  
VSS

API No: 05123419200000

Job ID: 7447118

SEC: 20

TWN: 2N

RGE: 65W

Permanent Datum (P.D.): Ground Level

Elevation:

4914.00 ft

KB:

DF:

4930.00 ft

Log Measured From: Rig Floor

Above P.D.

16.00 ft

GL:

4914.00 ft

Dates

Interval Logged

Magnetic Field Reference

Date From: 2015-09-15

Top: (ft)

6400.00

Azi Reference North: True

Dip Angle: (deg)

66.83

Date To: 2015-09-17

Bottom: (ft)

12639.00

Total Magnetic Field Strength: (nT)

52637

Spud Date: 2015-09-14

Mag to Reference North Correction: (deg)

8.20 E

Borehole Record

Casing Record

Hole Size (in)

From (ft)

To (ft)

Size (in)

Weight (lb/ft)

From (ft)

To (ft)

7.875

1858.00

12639.00

9.625

95.00

16.00

1849.00

Mud Record

Deviation Record

Type

From (ft)

To (ft)

Hole Size (in)

Interval (ft)

Inc | Az (Start)

Inc | Az (End)

Oil Based Mud

1858.00

12639.00

7.875

10781.00

12.22 | 8.54

90.89 | 176.98

Acquisition System

Software Version

Other

Baker Hughes Cadence

2.0.7102.1

Rig:

Xtreme 24

Prior Studio

2.0.7102.1

Contractor:

Xtreme

Unit:

D&E

"These interpretations and analyses ("Interpretations") are opinions provided by Baker Hughes Oilfield Operations, Inc ("Baker Hughes"), based upon industry practice, empirical relationships, assumptions and measurements, (many of which may be provided by the customer). The Interpretations are not infallible and may be subject to different opinions. Vjwu. "Dcmgt"Jwijgu"fqgu"pqv"ycttcpv"vjgkt"ceewtce{. "eqttgevpguu. "qt"eqorngvgpguu. "qt"vjcv"vjg"ewuvqogtøu"cpflqt"cp{ "vjktf"rctv{øu"tgnkcpeg"qp"uwej"Kpvgtrtgv cvkqpu"yknn"cee qornkuj"cp{ "rctvkewnct"tguwnvu0"Vjg"ewuvqogt"cuuwogu"hwnn" responsibility for the use of the Interpretations and for decisions based thereon and the customer agrees to release, defend and indemnify Baker Hughes, its parent, subsidiaries and affiliated or related entities, and subcontractors, together with its and their officers, directors, employees, agents and invitees against, any and all claims, losses, damages, or expenses sustained by the customer or any third party arising out of reliance upon or use of the Interpretations, without regard to the cause(s) thereof, including without limitation any form of negligence on the

part of Baker Hughes. Unless other contract terms have been agreed to by the parties, each party's liabilities and qdnkicvkqpu"ujcnn"dg"iqxgtpgf"d{"Dcmgt"JwiJgu"Kpeqtrqtctvgfðu"Yqtnfykfg"Vgtou"cpf"Egpfkvkqpu0\$""

Log Run Summary

Run No	Bit Run No.	Bit Size (in)	Bit Type	Bit Gauge Length (in)	Assembly Type	Logged Interval		Bit Depth Interval		Date / Time		Circ. Hours (h)
						Top	Bottom	From	To	Start Logging	End Logging	
						(ft)	(ft)	(ft)	(ft)			
1	1	7.875	PDC	2.00	Motor	6400.00	12594.00	1858.00	12639.00	2015-09-14 21:47	2015-09-17 00:17	45.65

Crew

Name		Arrive Wellsite	Depart Wellsite	Name		Arrive Wellsite	Depart Wellsite	Name		Arrive Wellsite	Depart Wellsite
Adam Harris		2015-09-14	2015-09-17	Matthew Delmore		2015-09-14	2015-09-17	Matthew Leopold		2015-09-14	2015-09-17
Ryan Kielian		2015-09-14	2015-09-17								

Equipment and Service Data

Run No.	Tool	Serial Number	Measurement	Sensor Offset (ft)	Bit Offset (ft)	Max O.D. (in)	Min I.D. (in)
1	NaviGamma	13191957	Gamma (single)	14.08	45.08	6.500	3.250
1	NaviGamma	13191957	VSS	17.49	48.49	6.500	3.250
1	NaviGamma	13191957	Directional (mag)	17.49	48.49	6.500	3.250

Comments


1	Baker Hughes INTEQ run 1 utilized a 6.5 inch NaviGamma (Directional and Gamma Ray) tool ran behind an 7 7/8 inch bit with a steerable assembly from 1858 to 12639 feet MD (1842 to 7052.02 feet TVD).
2	A sliding indicator is shown on the left side of track 1 as a heavy line. The indicator has been shifted to the Gamma Ray sensor offset to correspond with Gamma Ray data acquired while sliding.
3	Depth measurements obtained from a depth control system not supplied or operated by Baker Hughes INTEQ. Due to lack of control by Baker Hughes INTEQ logging engineers, depth calibration and measurements could not be independently verified.

Remarks

Number	Measured Depth (ft)	Hole Section (in)	Run No.	Remark
1	6400.00	7.875	1	The interval from surface to 6400 feet MD (16 to 6384 feet TVD) was not logged due to directional only services required in the vertical section.
2	12600.00	7.875	1	The interval from 12594 to 12639 feet MD (7052.72 to 7052.02 feet TVD) has no GRAX, GRIX or GRTX due to the Gamma Ray sensor offset to bit.

Curve Mnemonics

Presented Curves	Description	Units
ROPA	Depth Averaged ROP 3 ft Average	ft/h
GRAX	Gamma Ray - Apparent 0.5 ft Average	API
GRIX	Gamma Ray - Data Point Indicator	unitless
GRTX	Gamma Time Since Drilled	min
GRSI	Sliding Indicator Flag	unitless
TCDX	Downhole Temperature	degF
TVD	True Vertical Depth	ft
WOBA	Weight On Bit, Average 1 ft Average	klb



Company

Well

Interval

Created

Anadarko

Sarchet 36N-20HZ

Date From: 2015-09-15 12:48

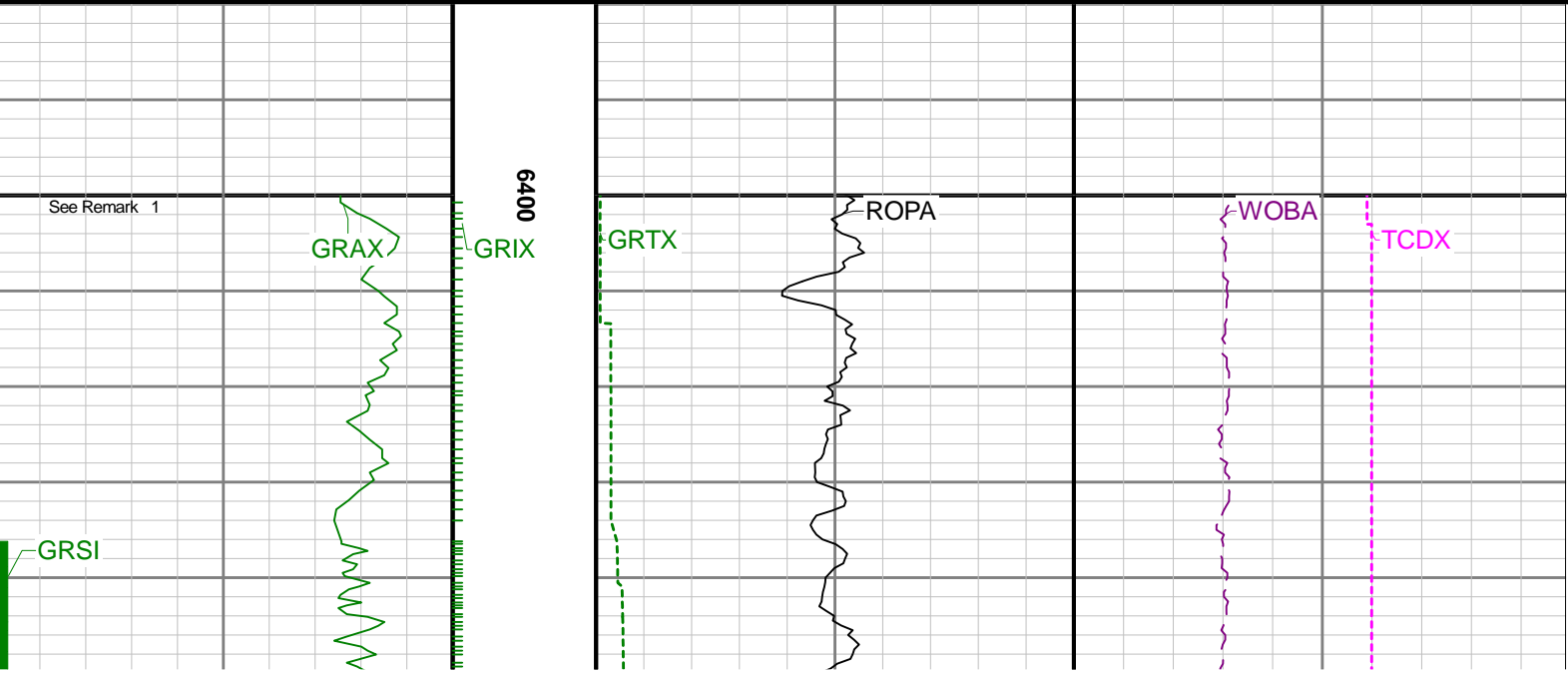
Date To: 2015-09-17 00:17

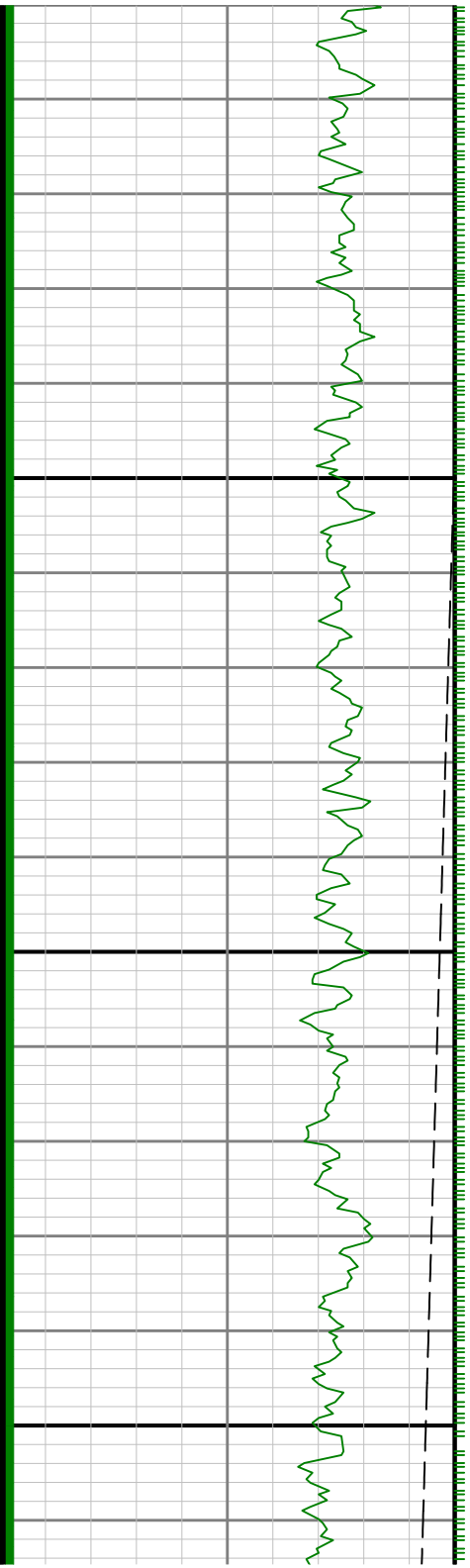
Created: 2015-09-17 02:55

Top: 6400.00

Bottom: 12639.00

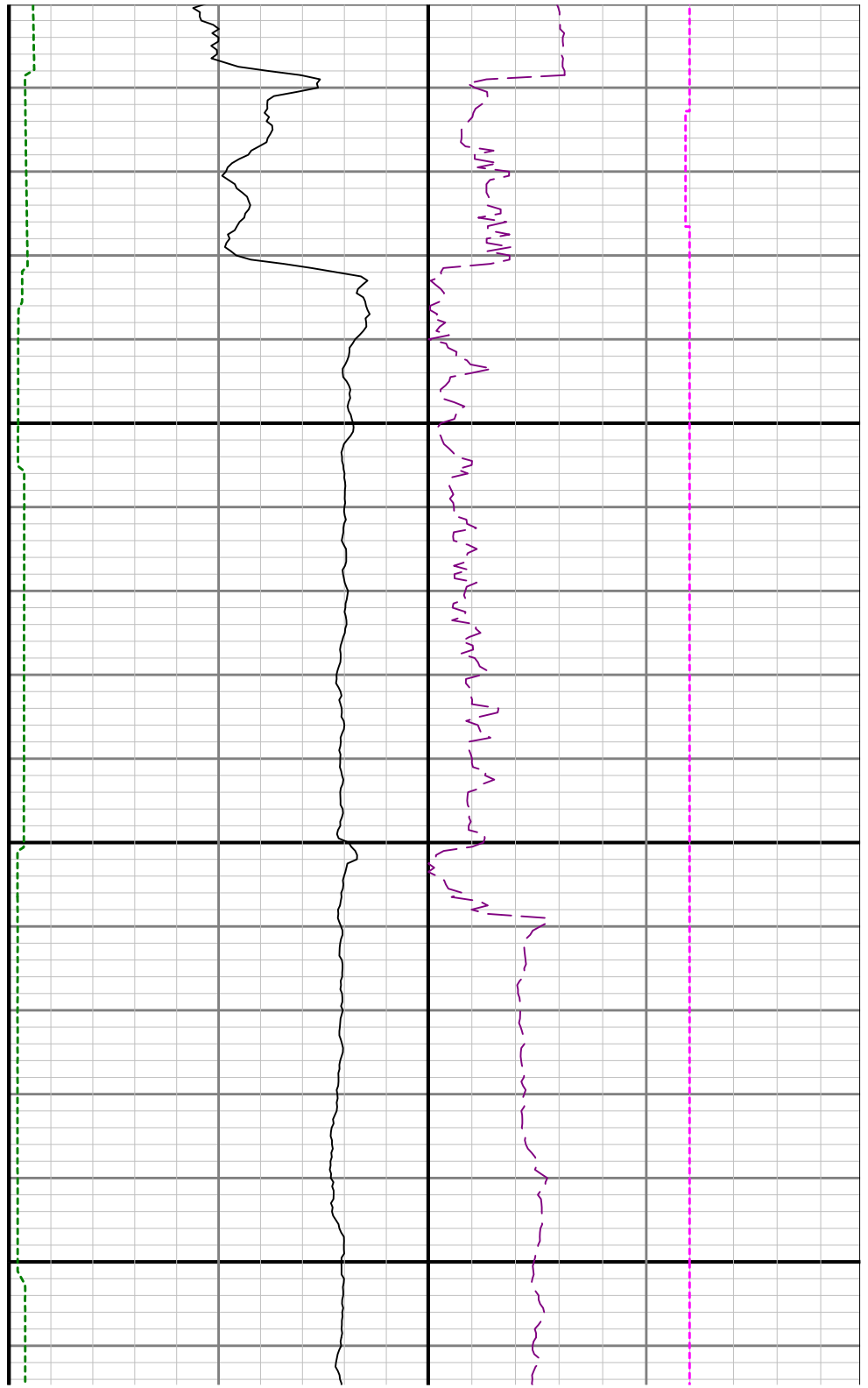
Gamma Ray Apparent 0.5 ft Average GRAX	MD 1:240 feet	Rate of Penetration 3 ft Average ROPA	Surface Weight On Bit 1 ft Average WOBA
0 150		1000 0	0 100
API		ft/h	klb
True Vertical Depth TVD		Gamma Ray Time Since Drilled GRTX	Downhole Temperature TCDX
8000 6400		0 600	0 300
ft		min	degF

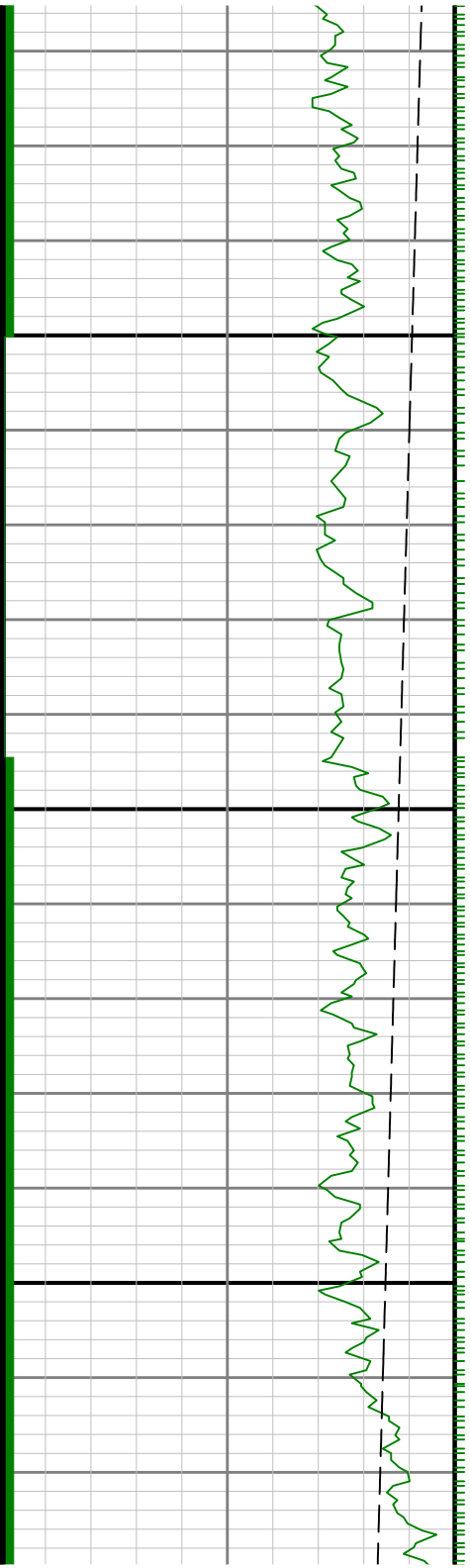




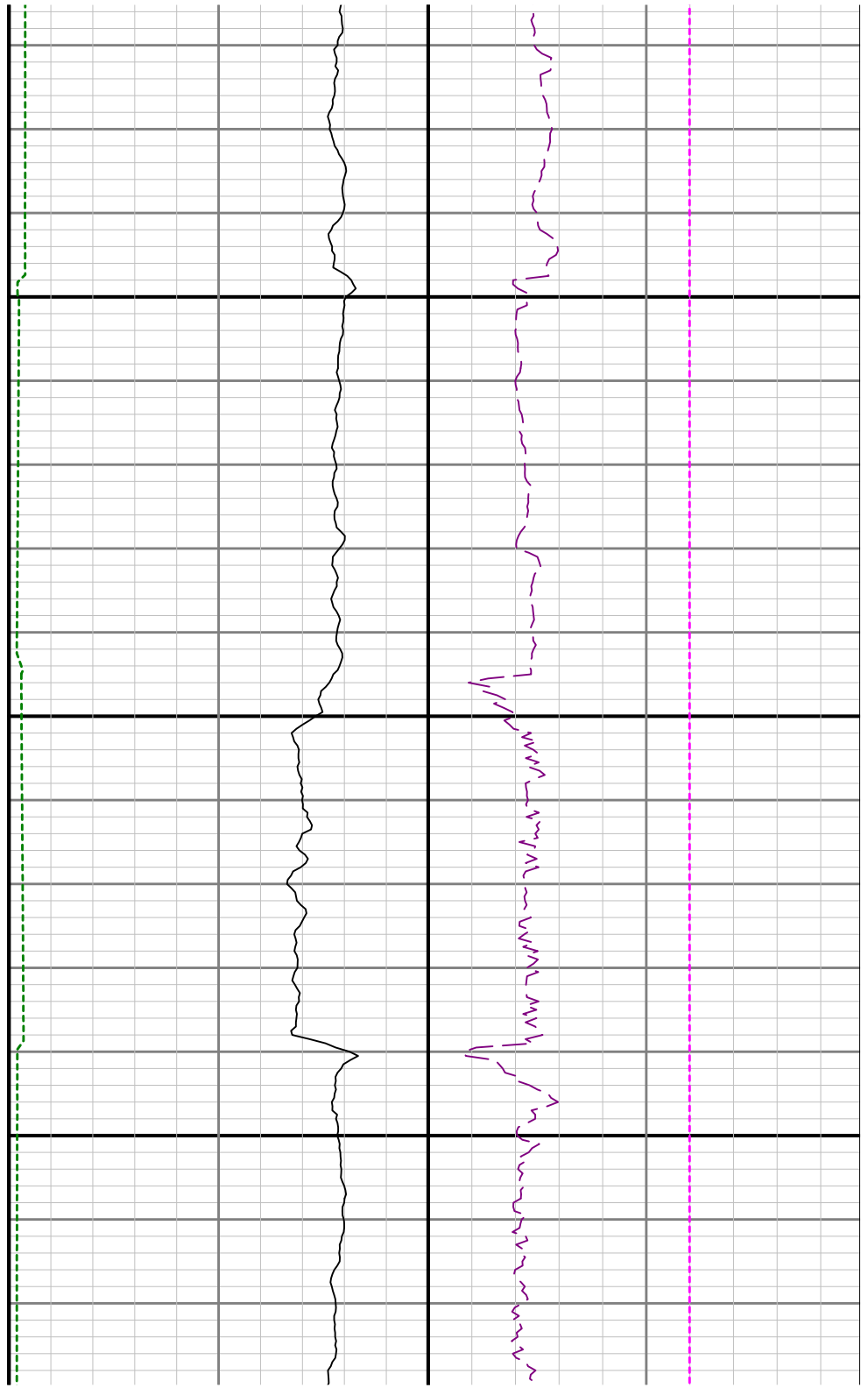
6500

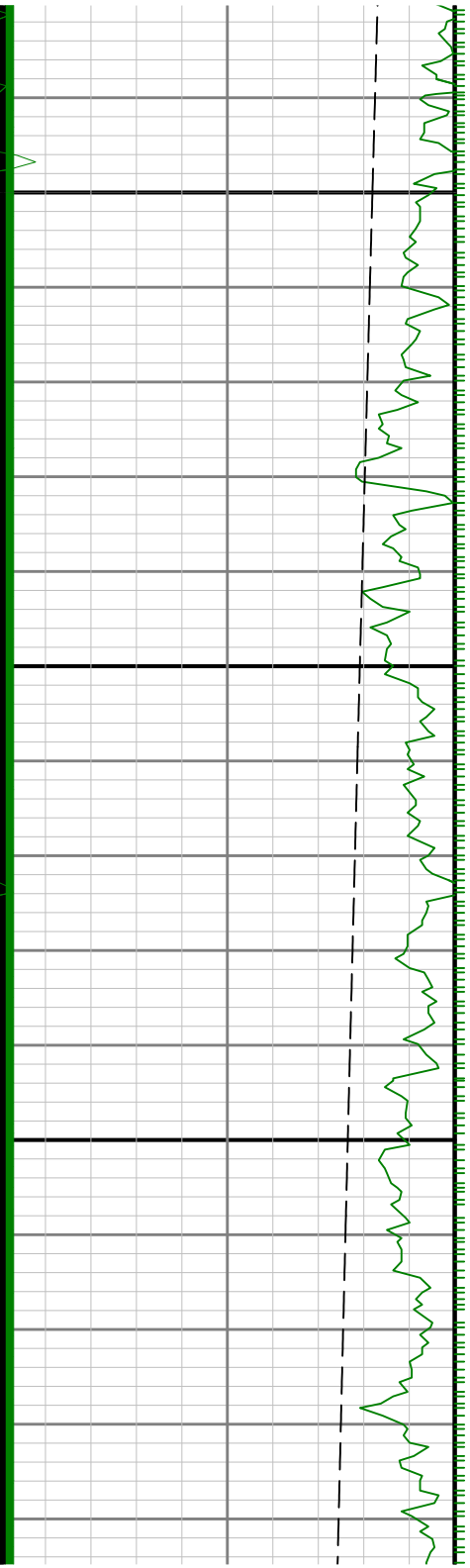
6600





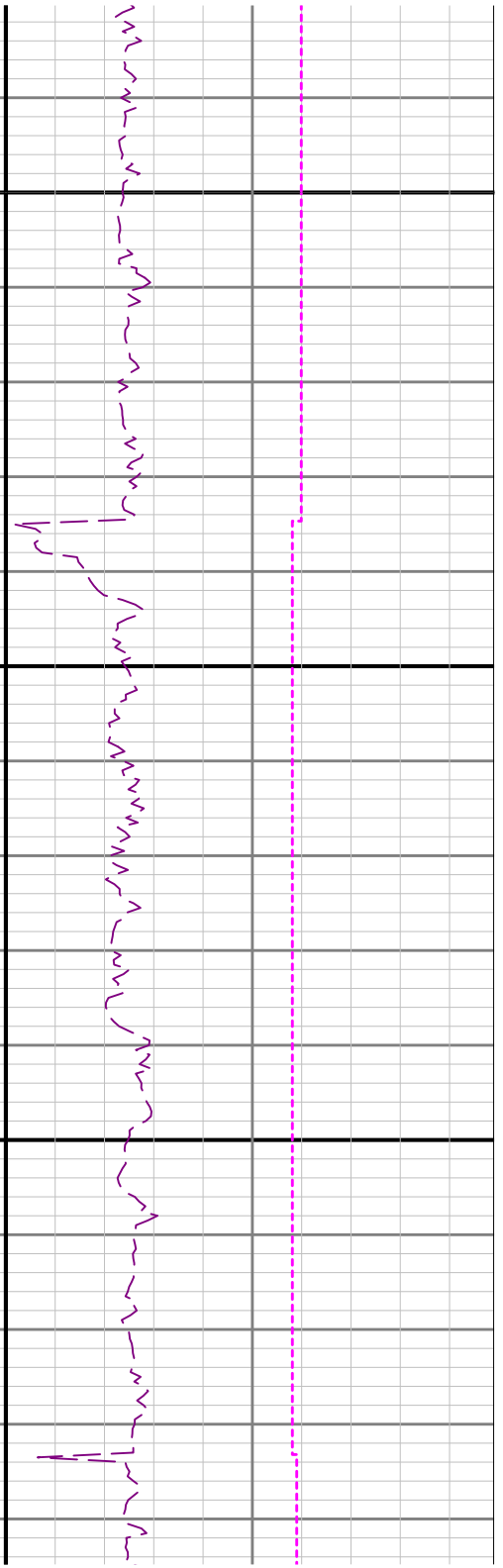
6700

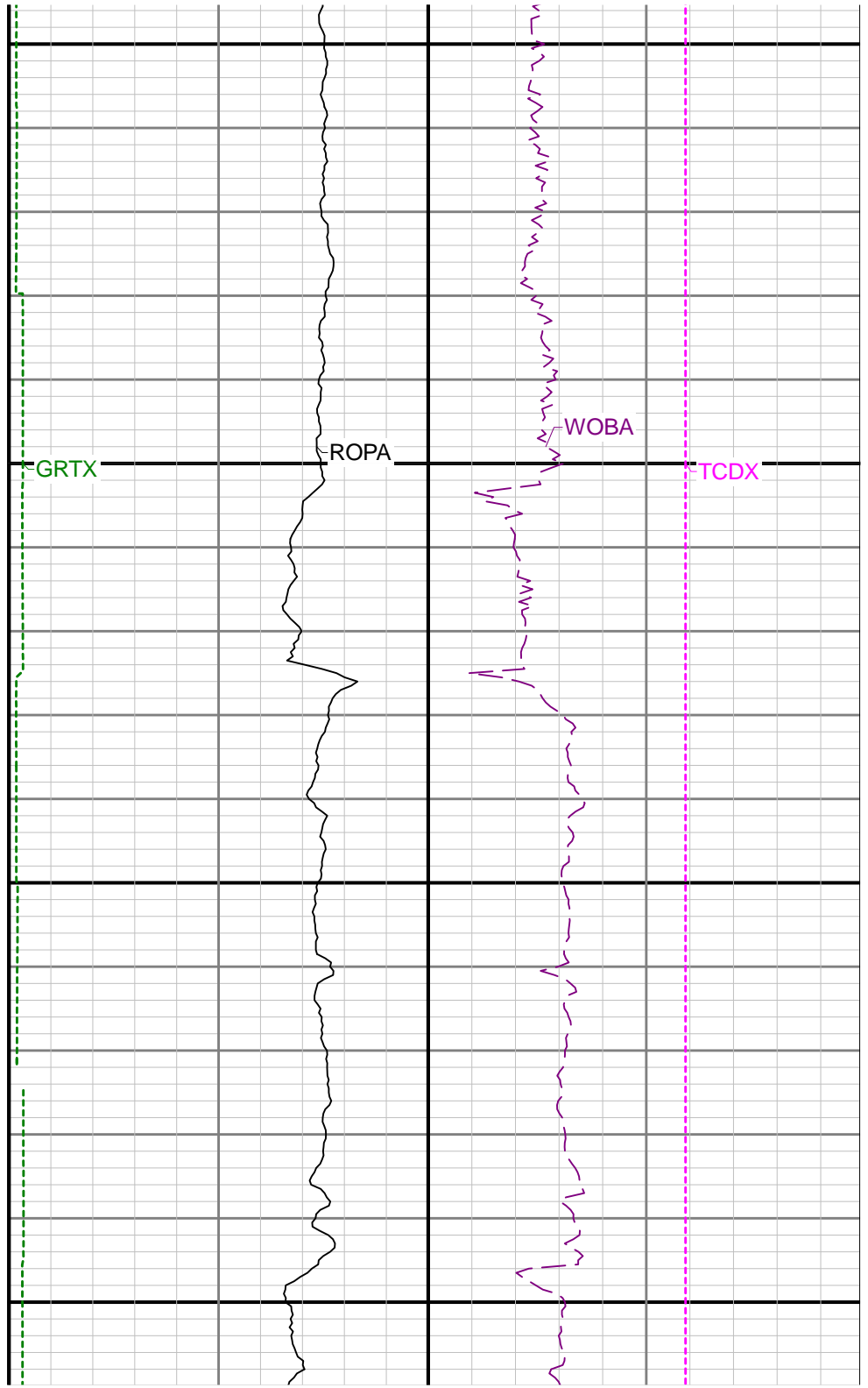
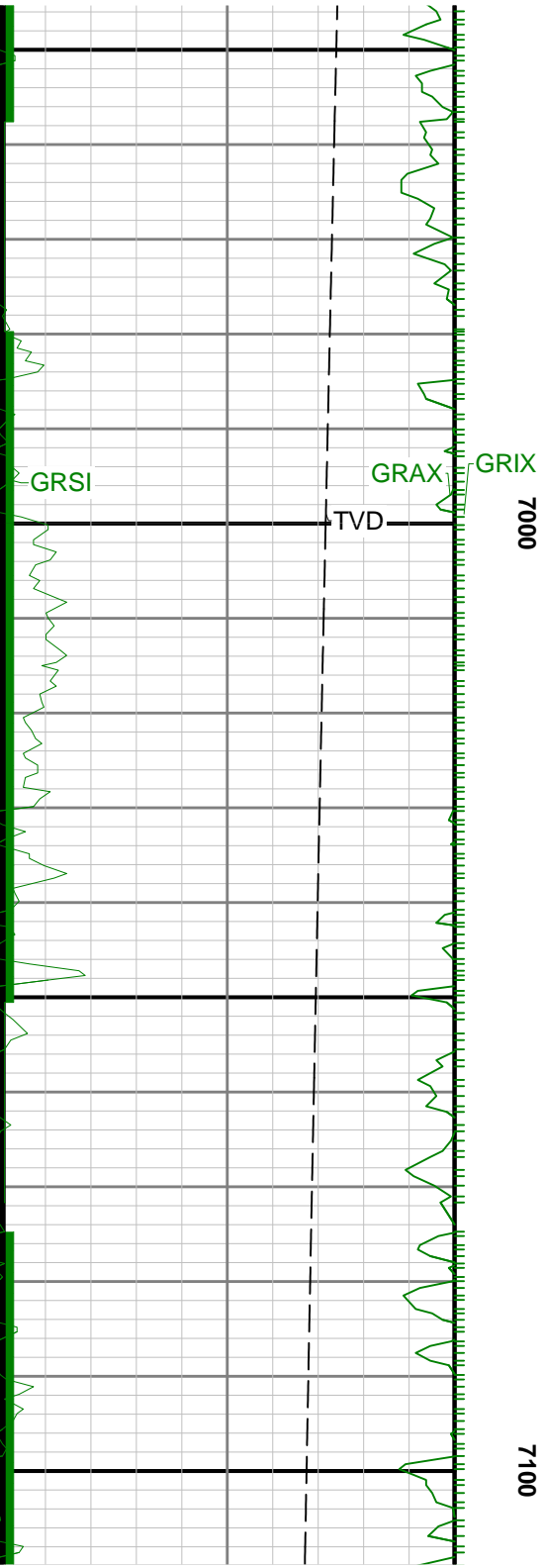


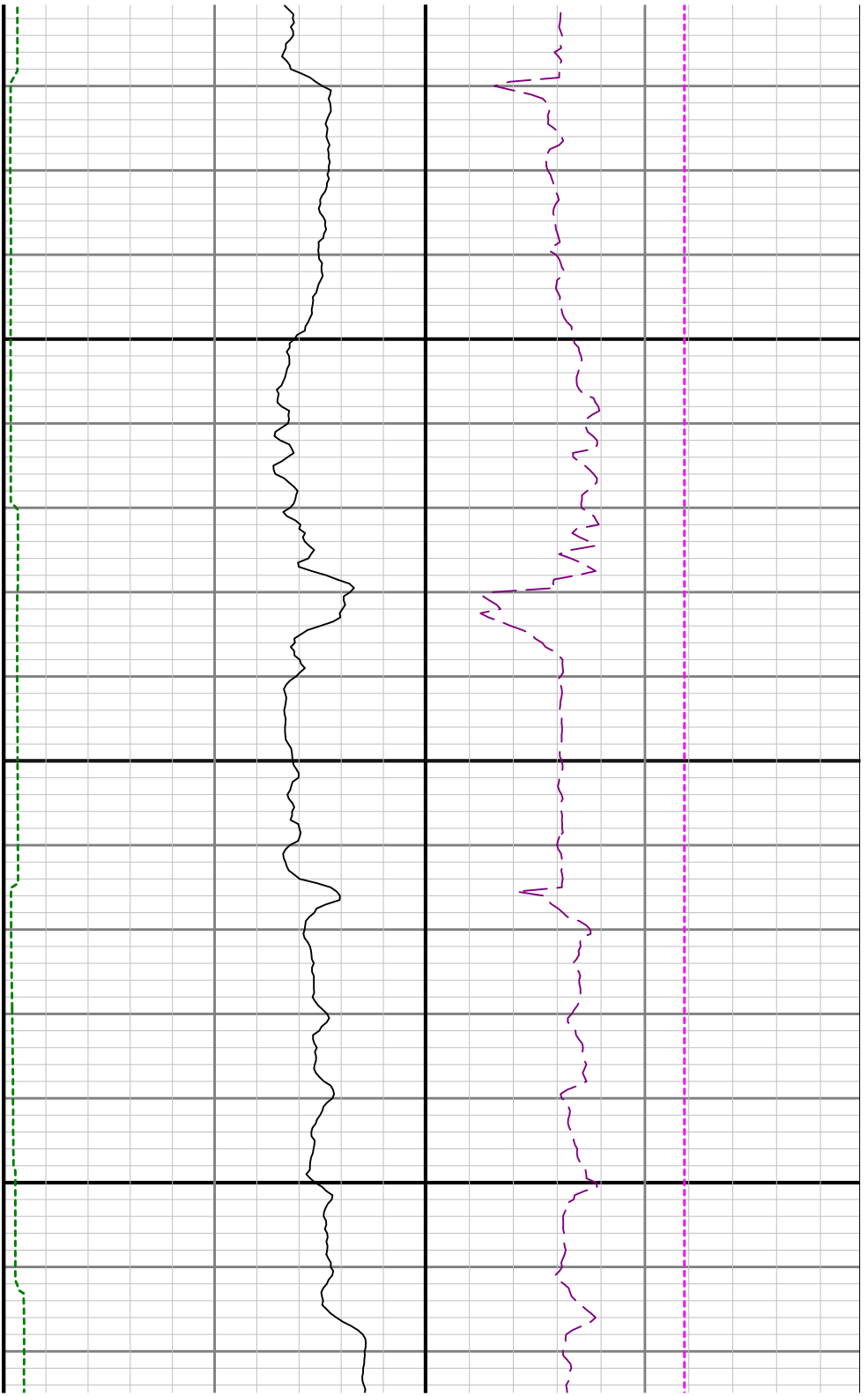


0069

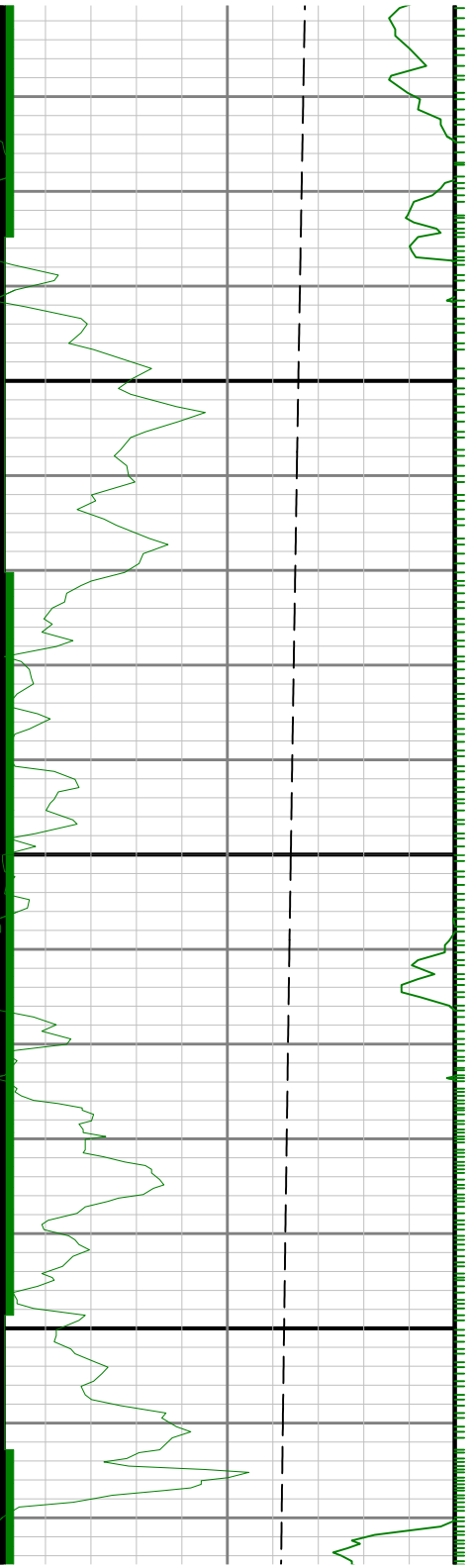
0089



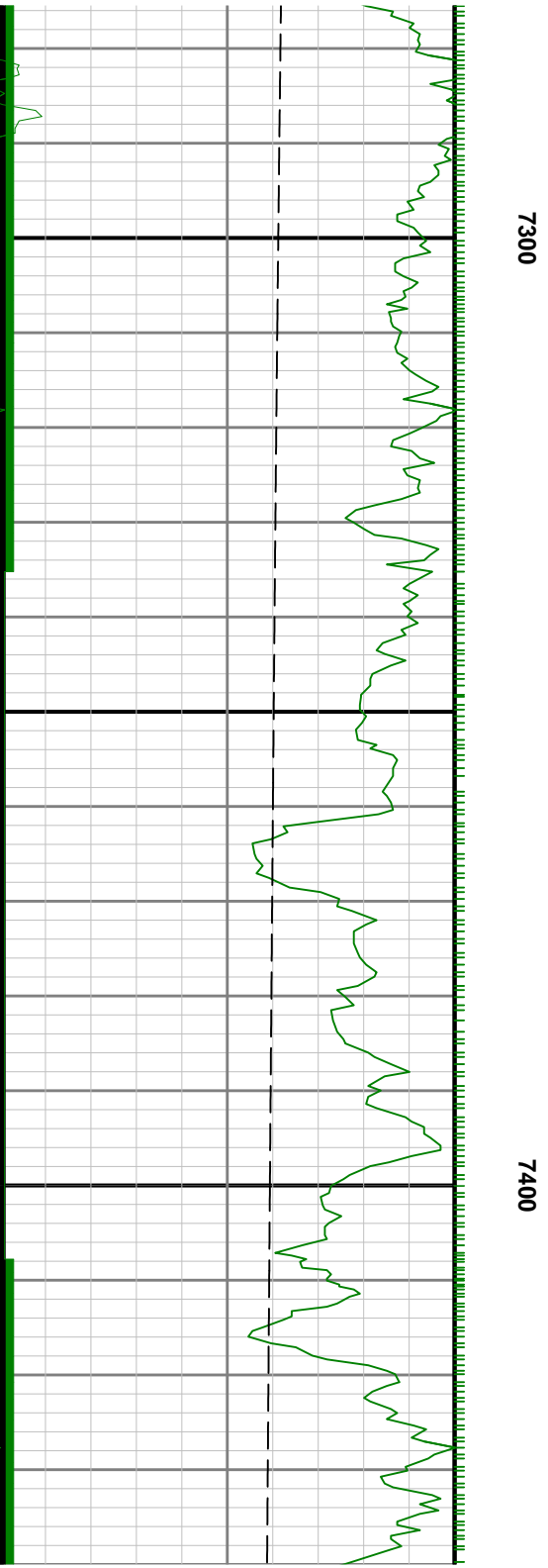
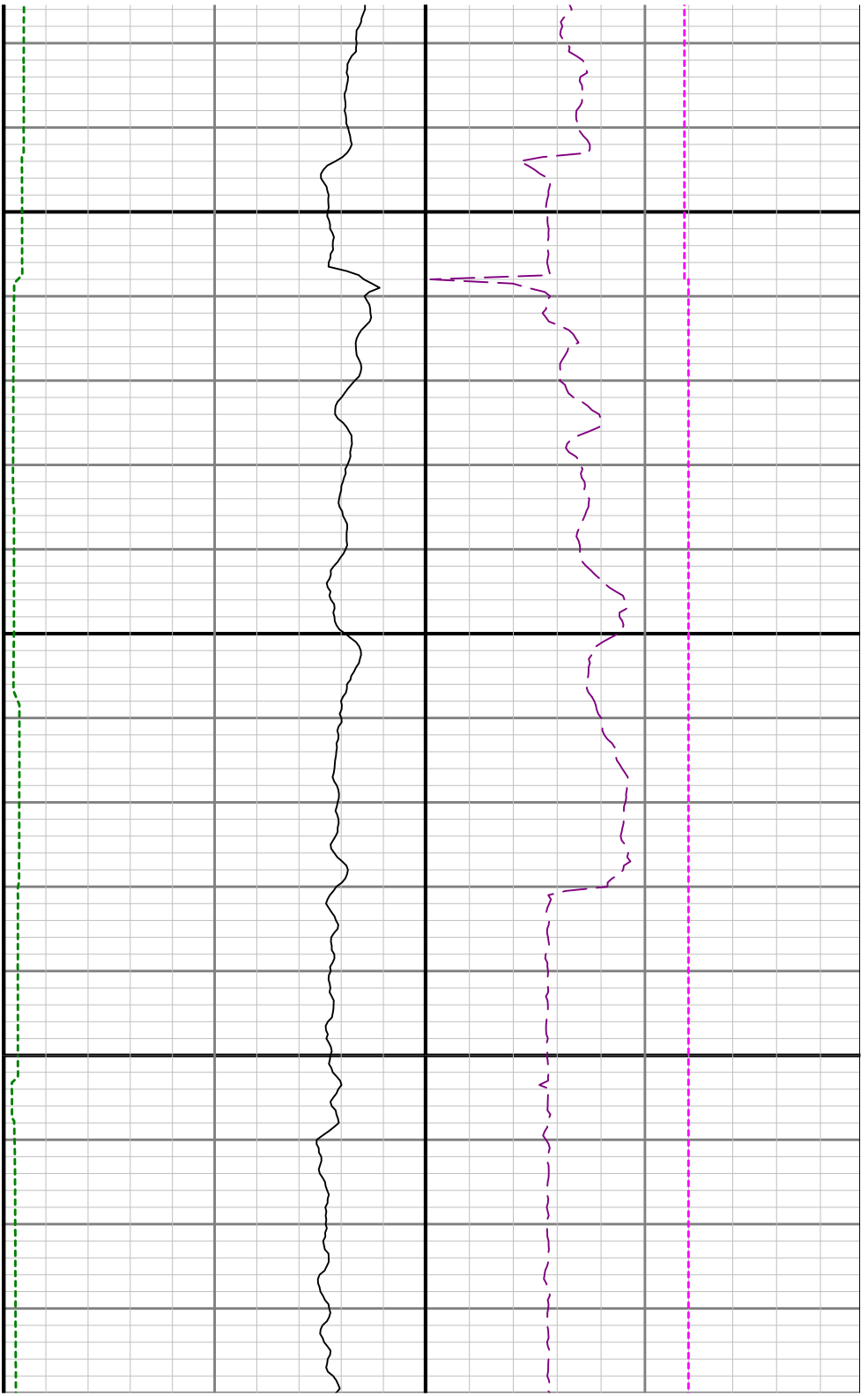


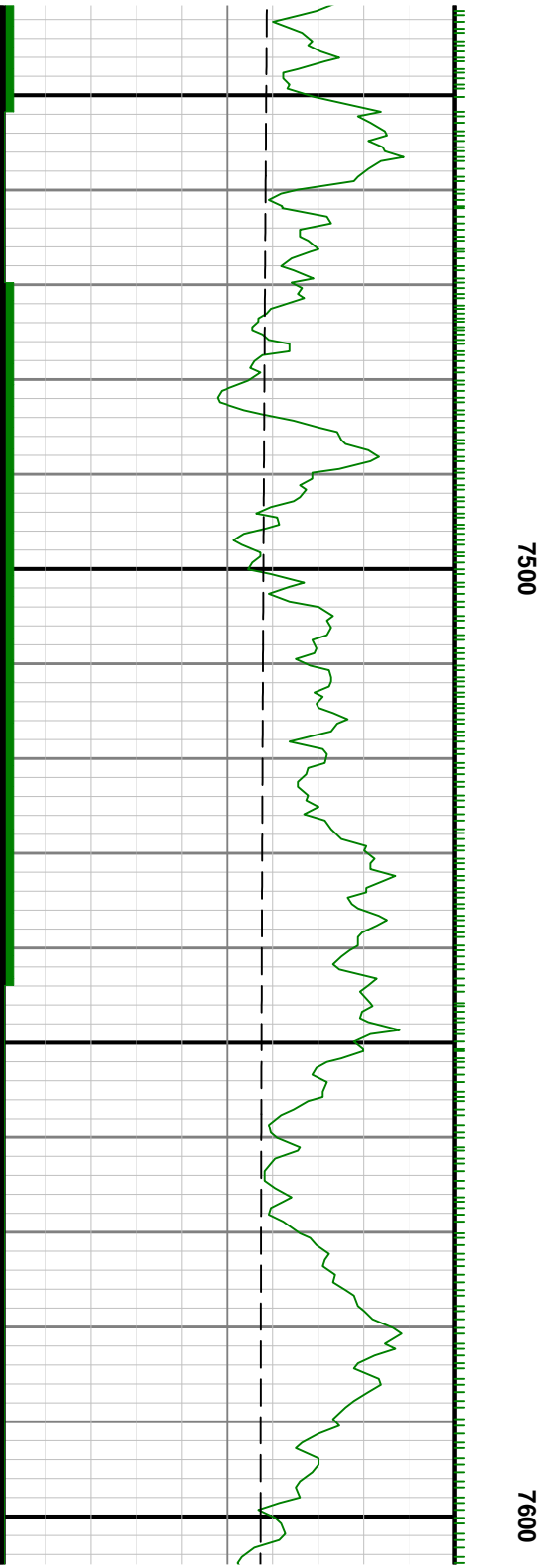


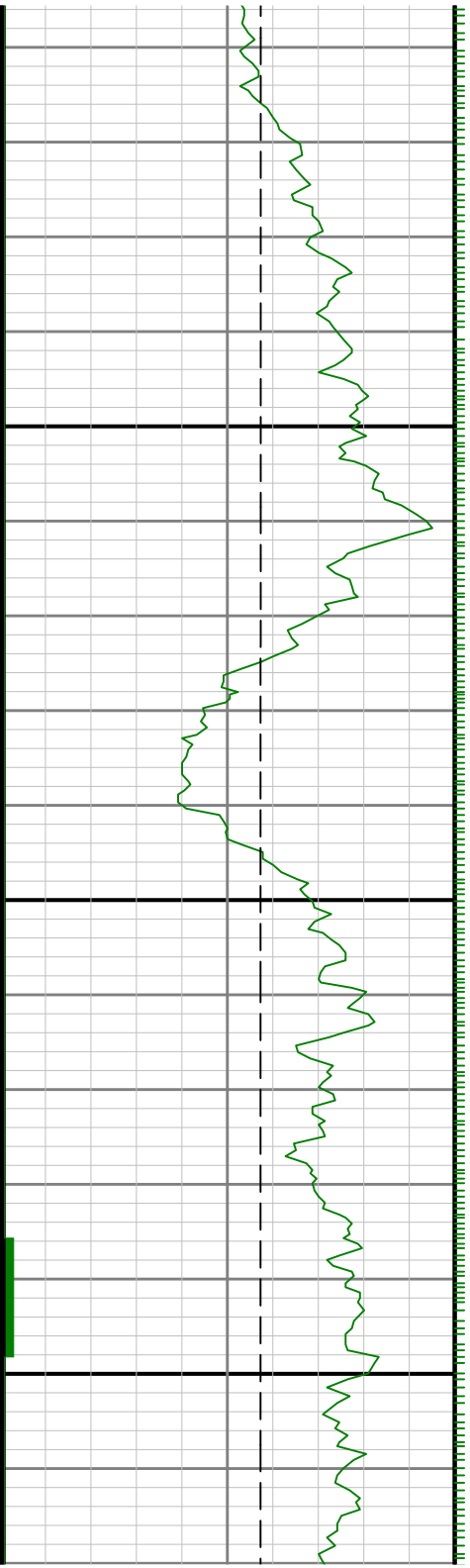
7200



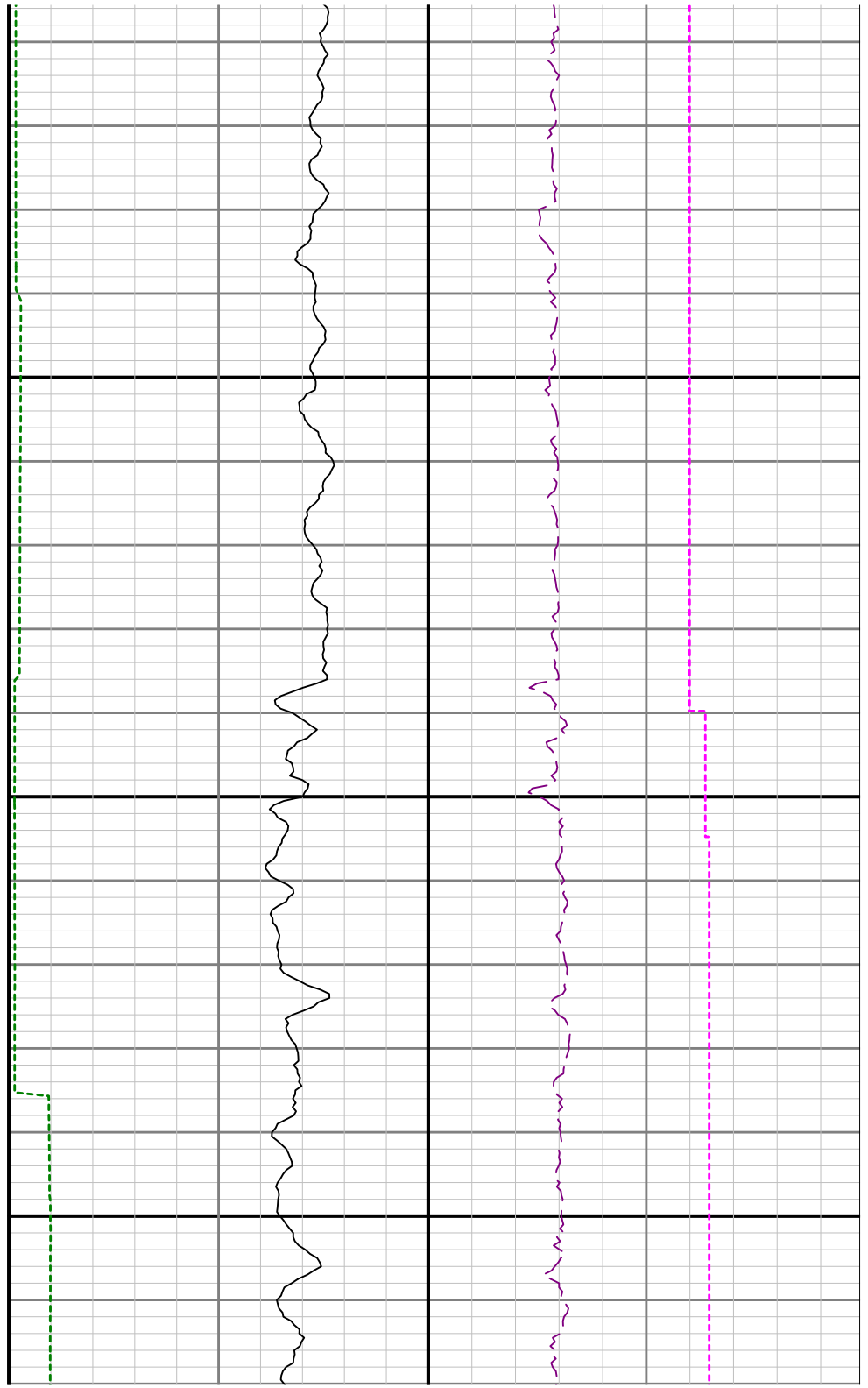


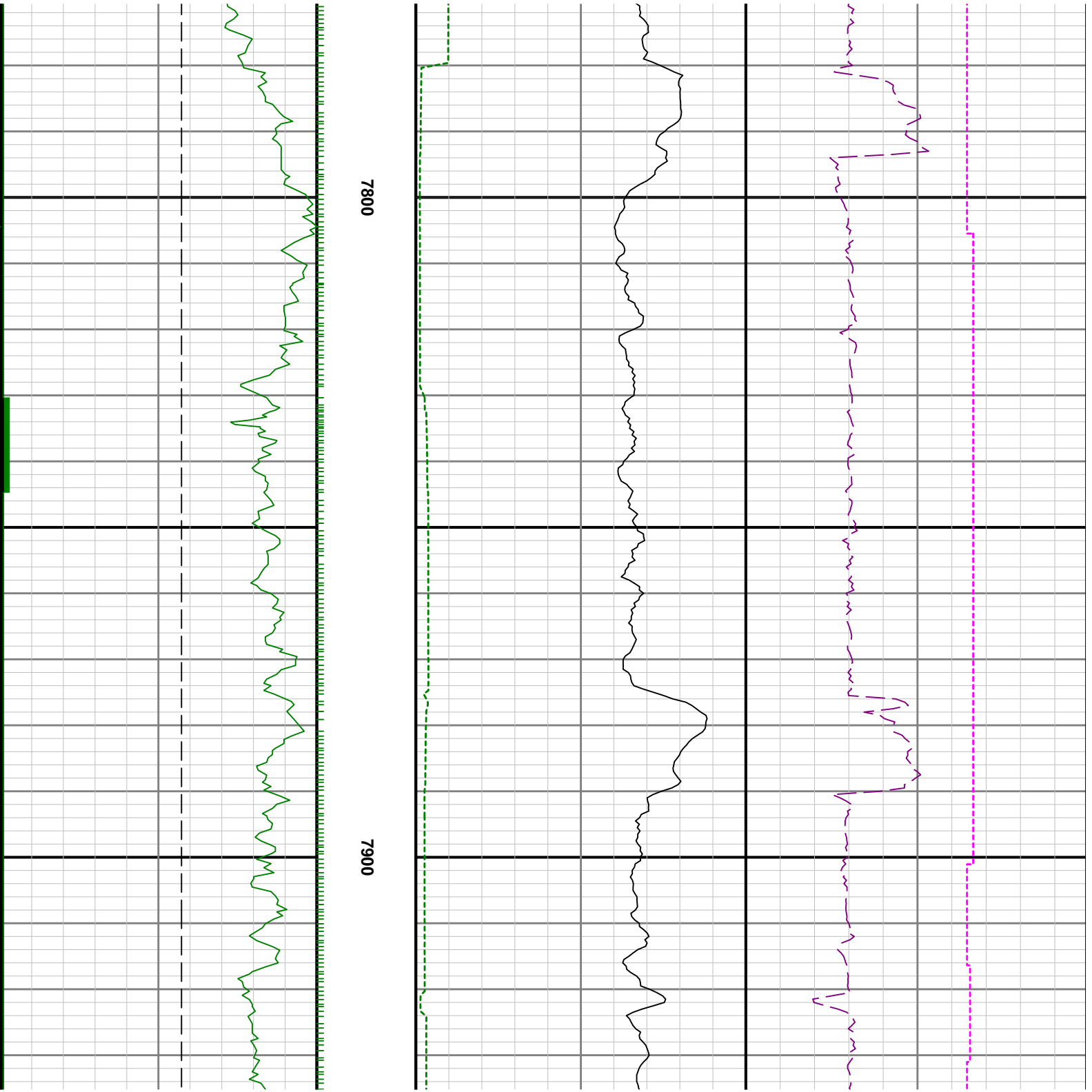


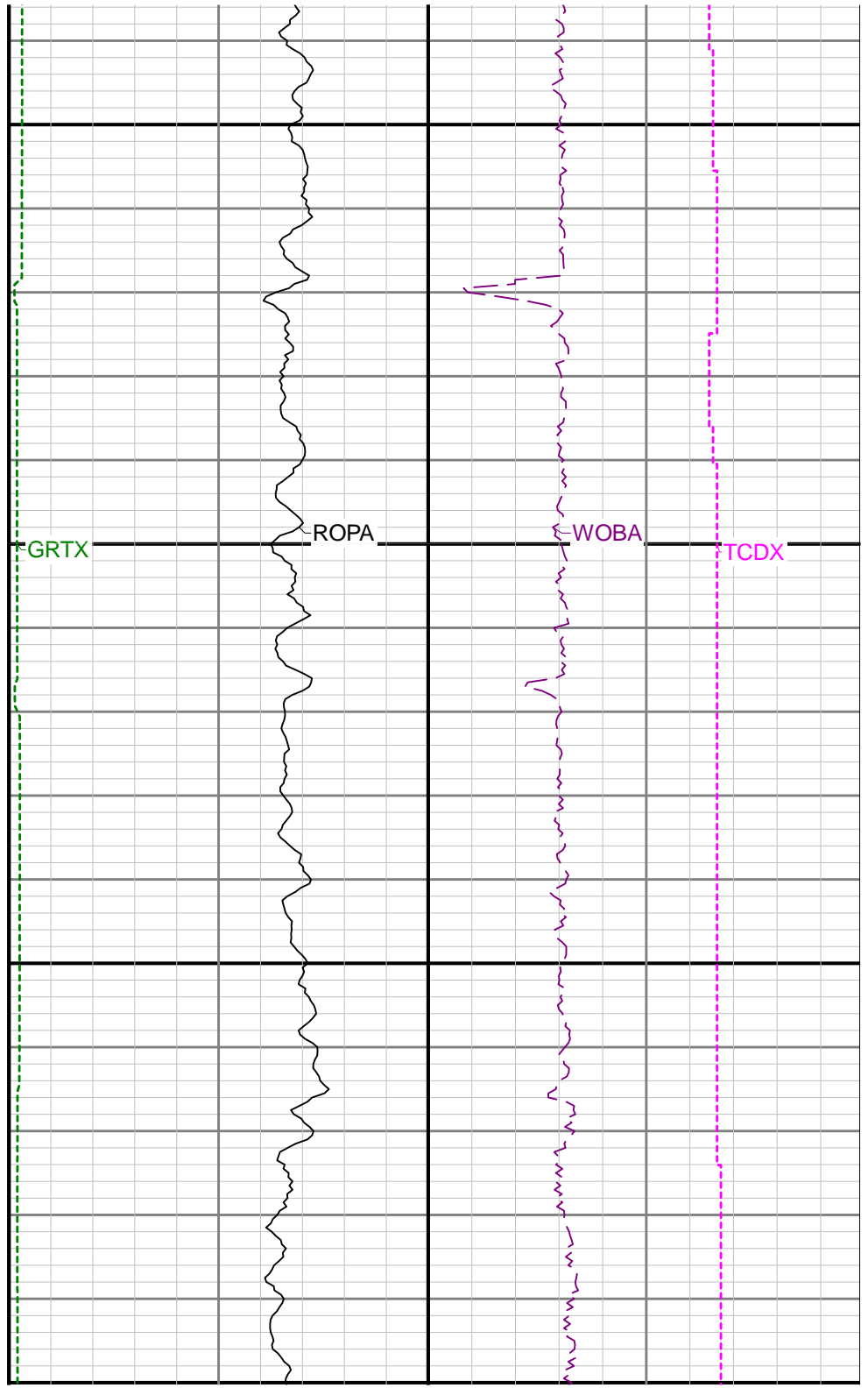
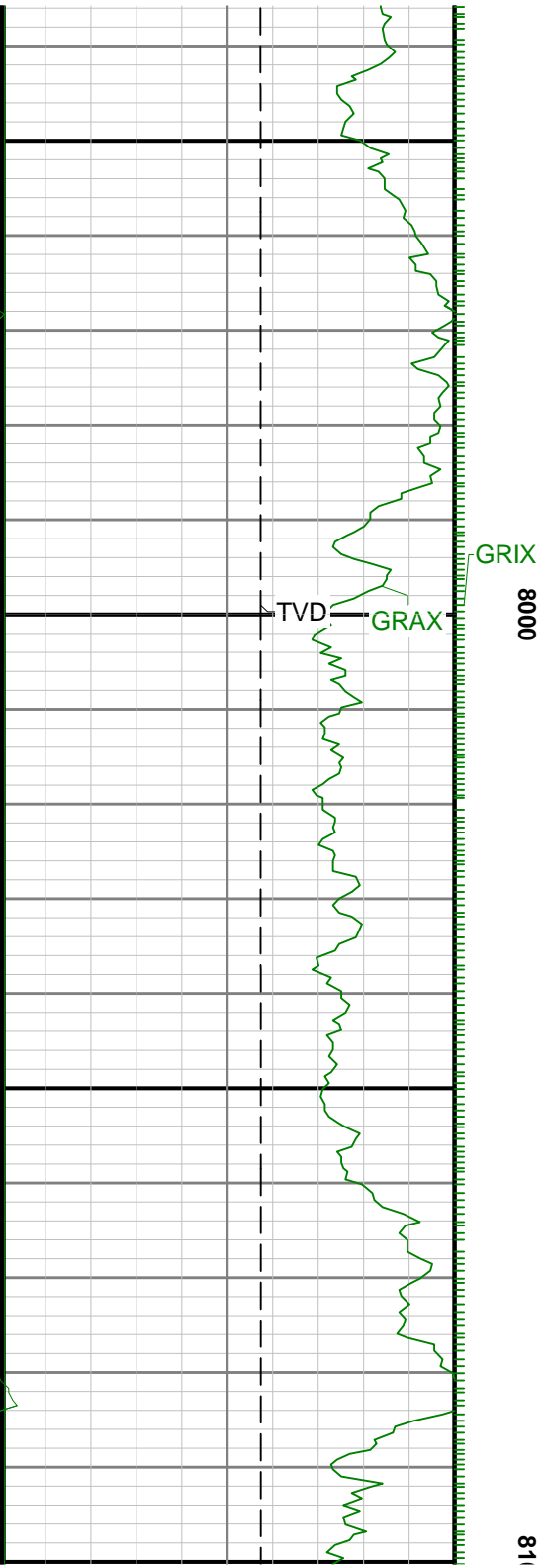


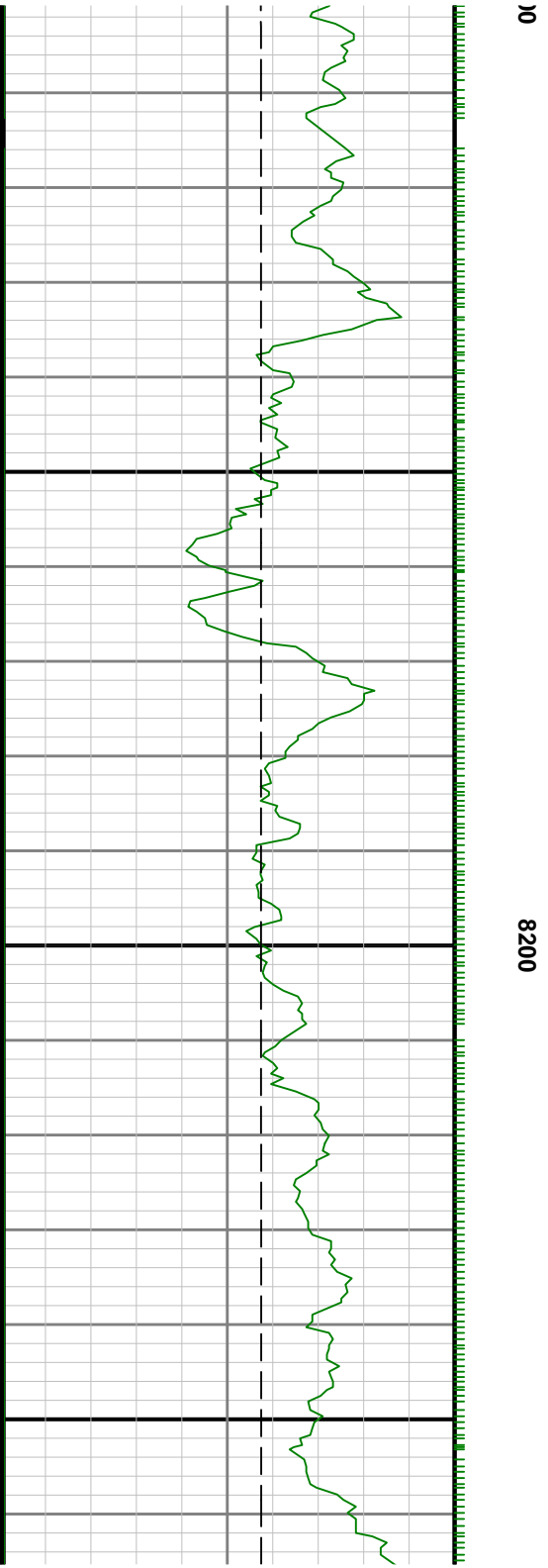
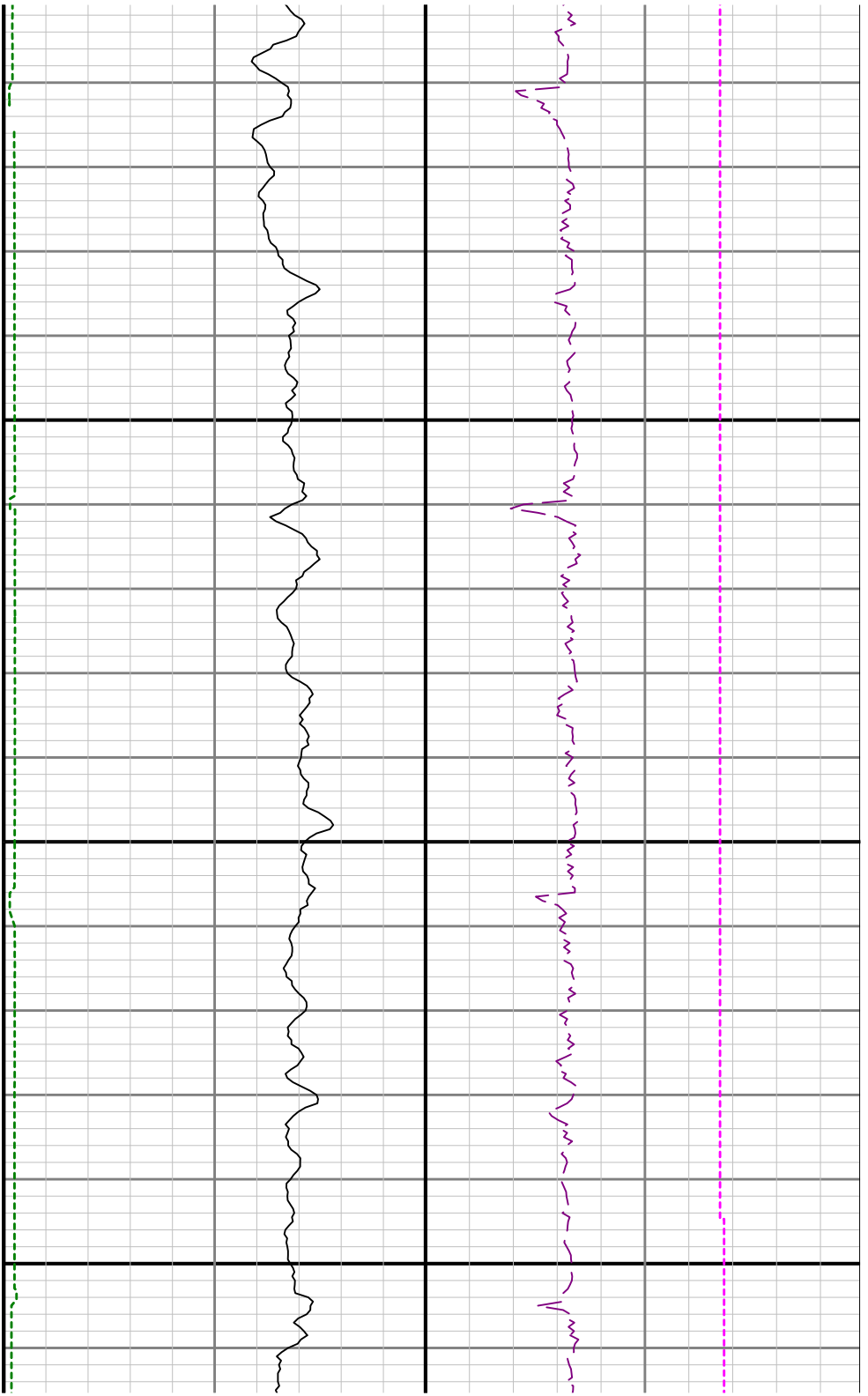


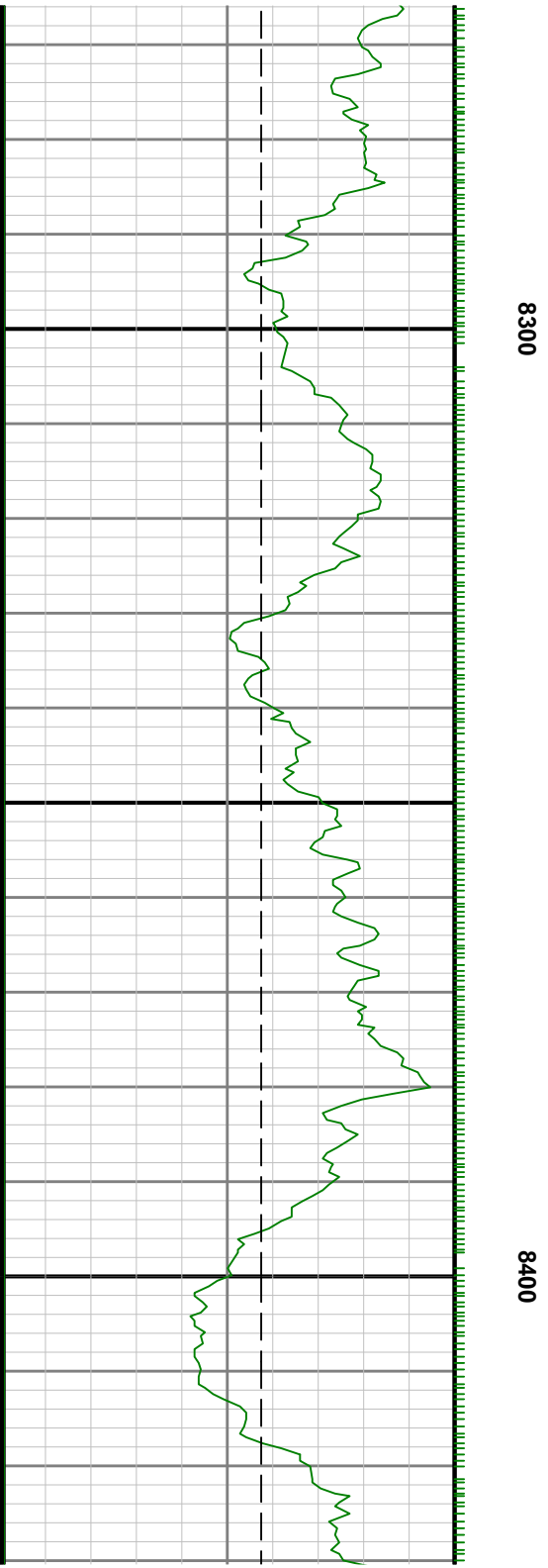
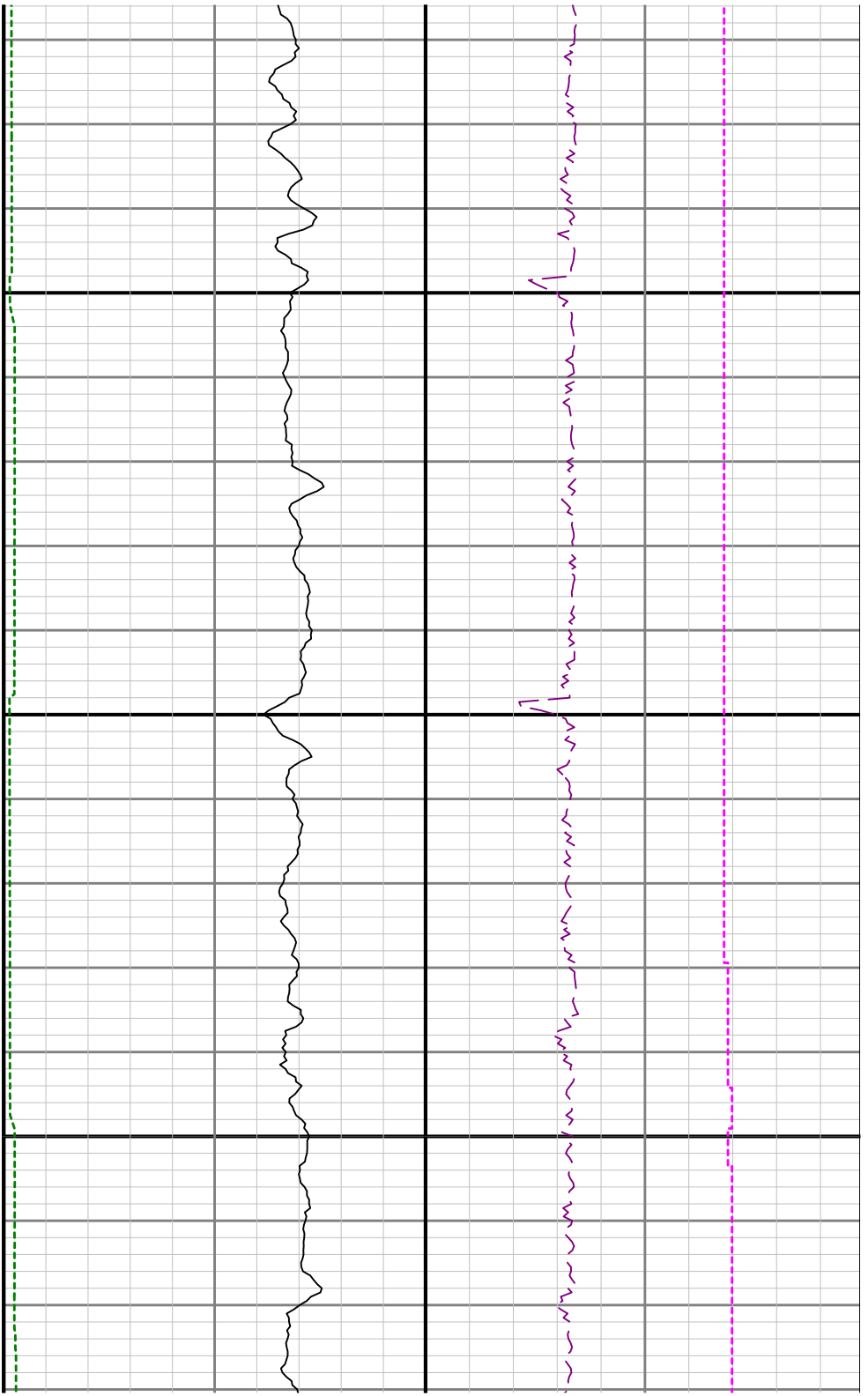
7700

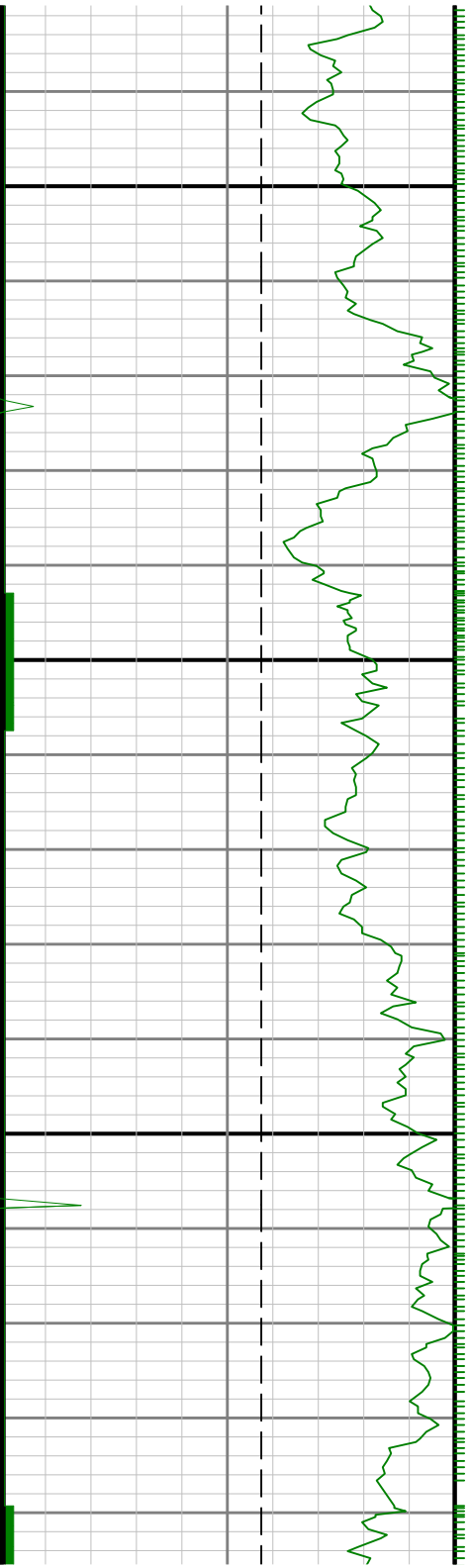




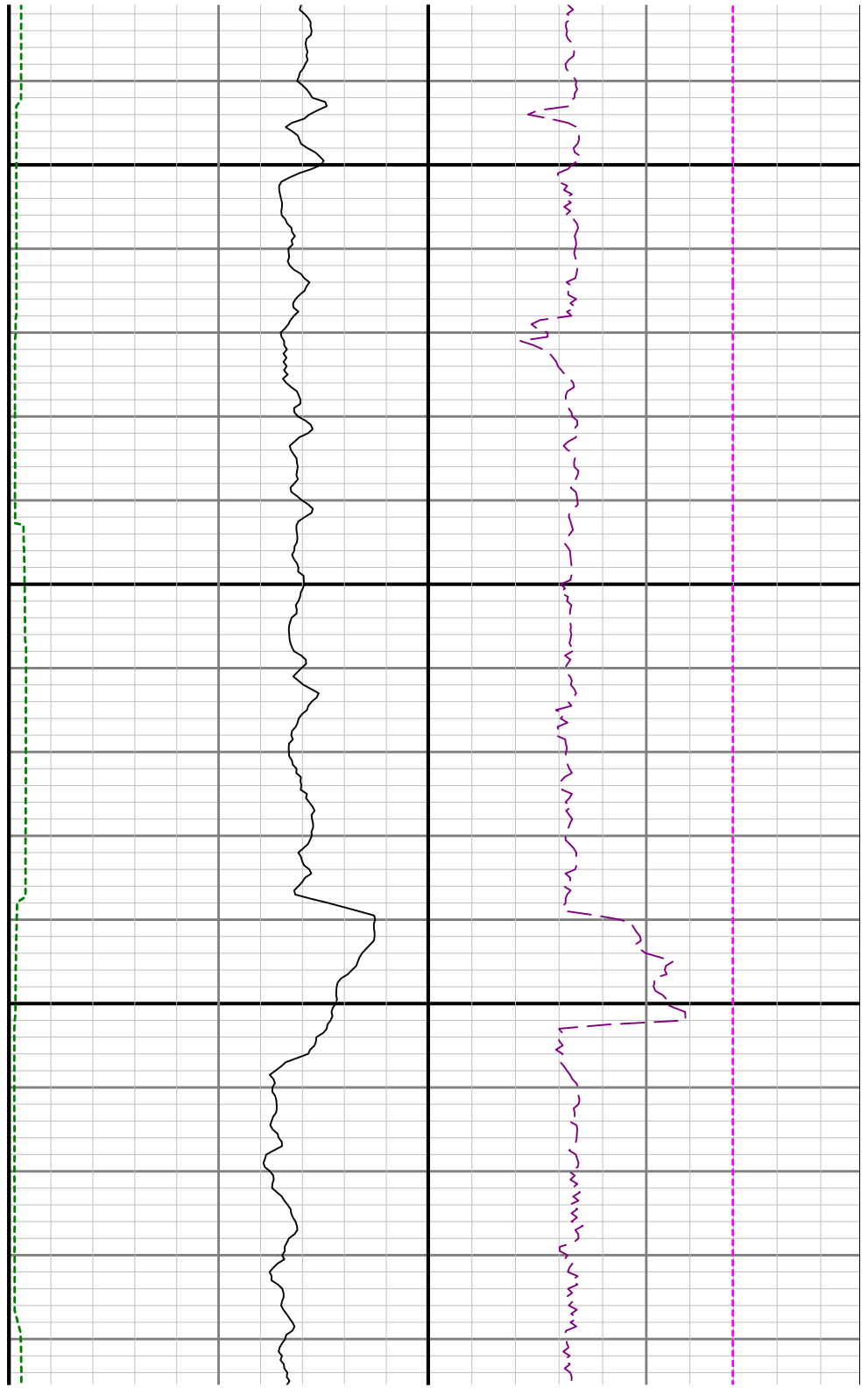




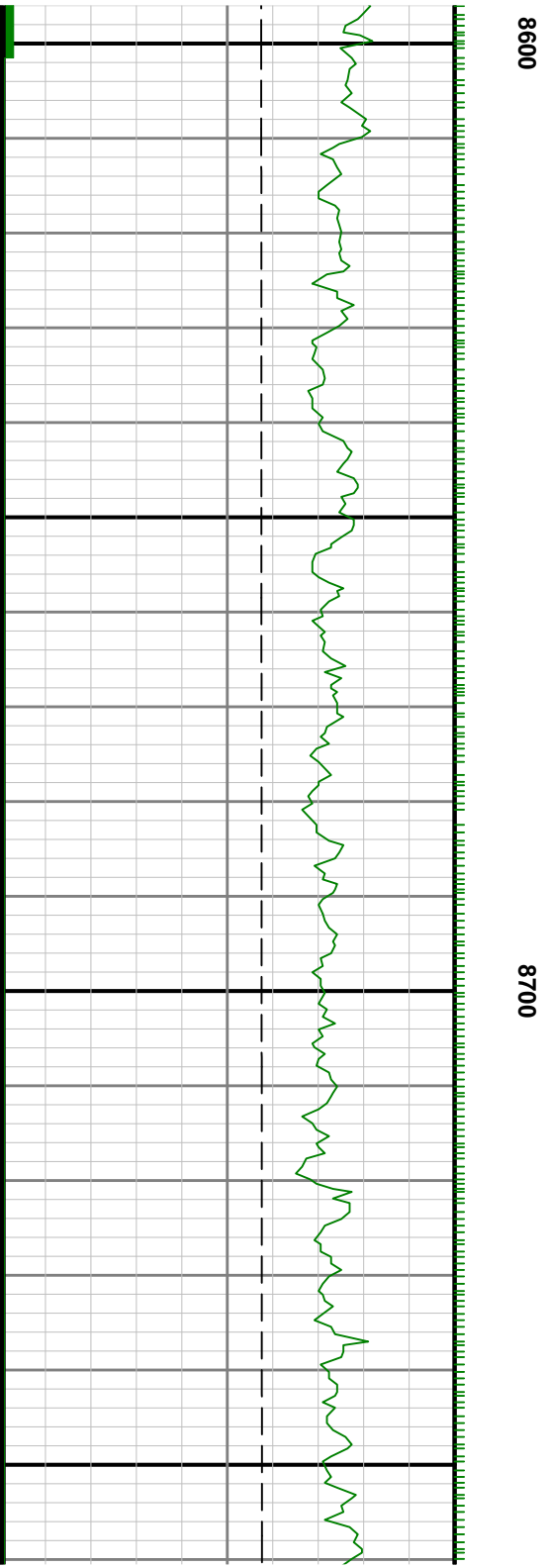
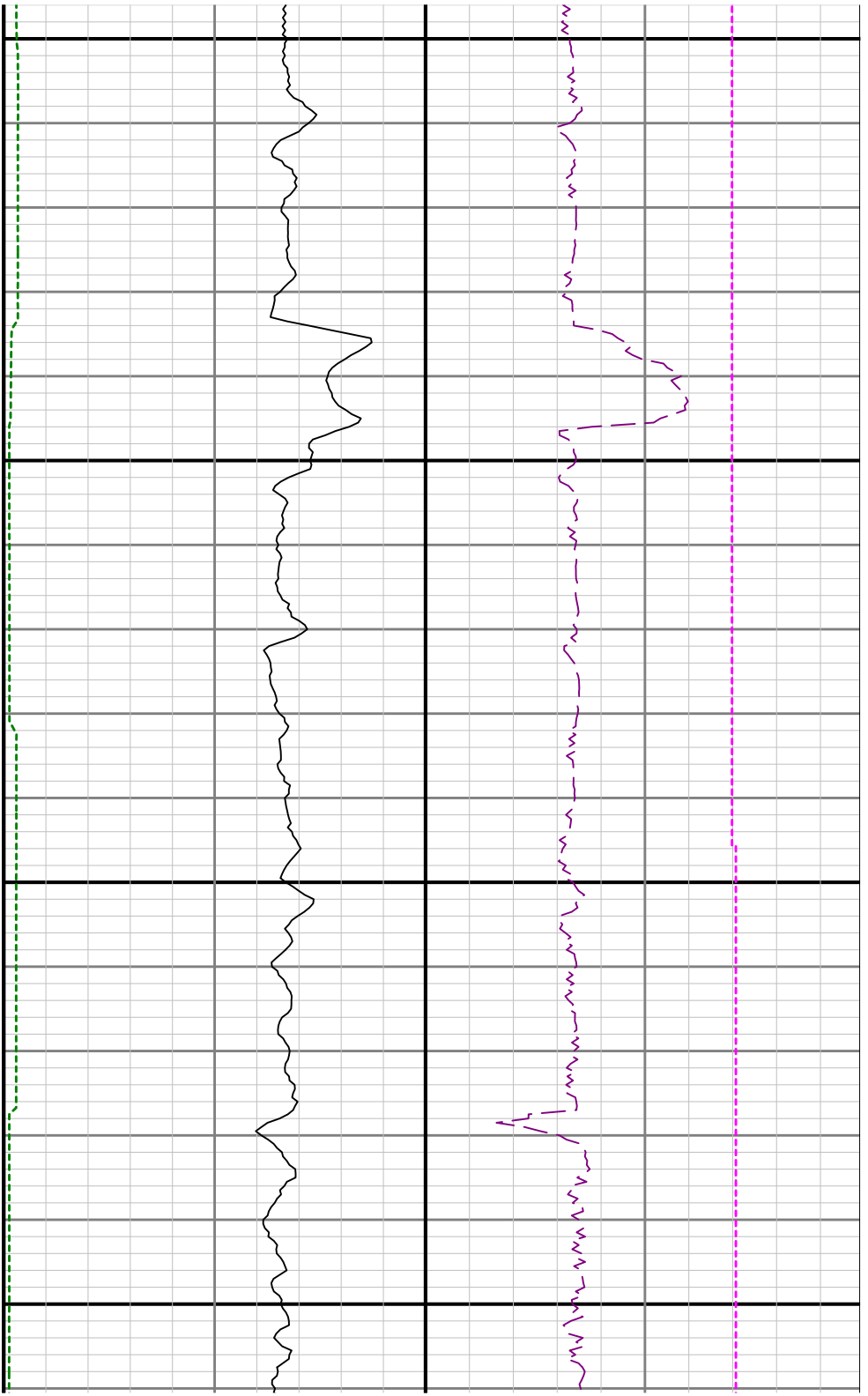


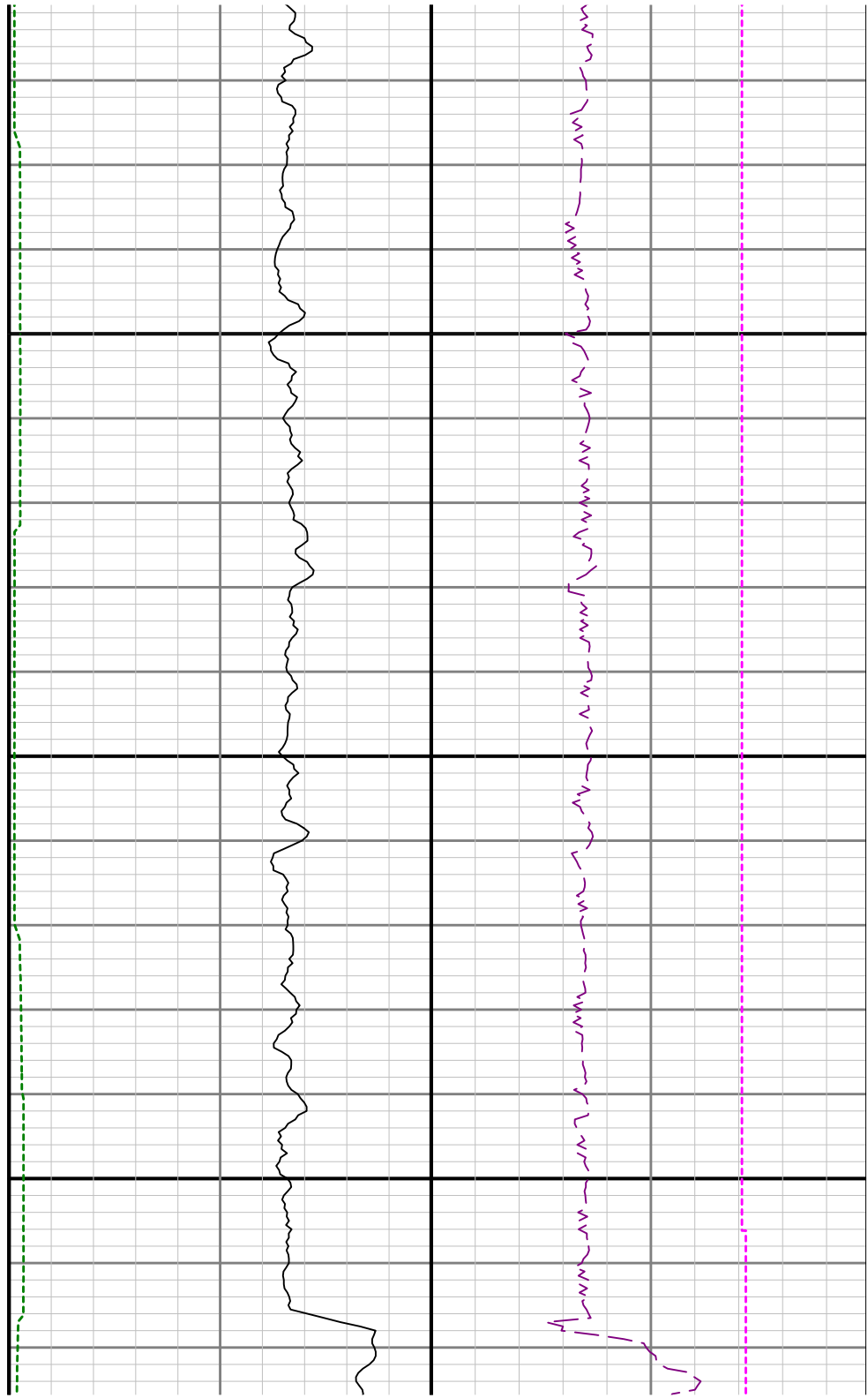
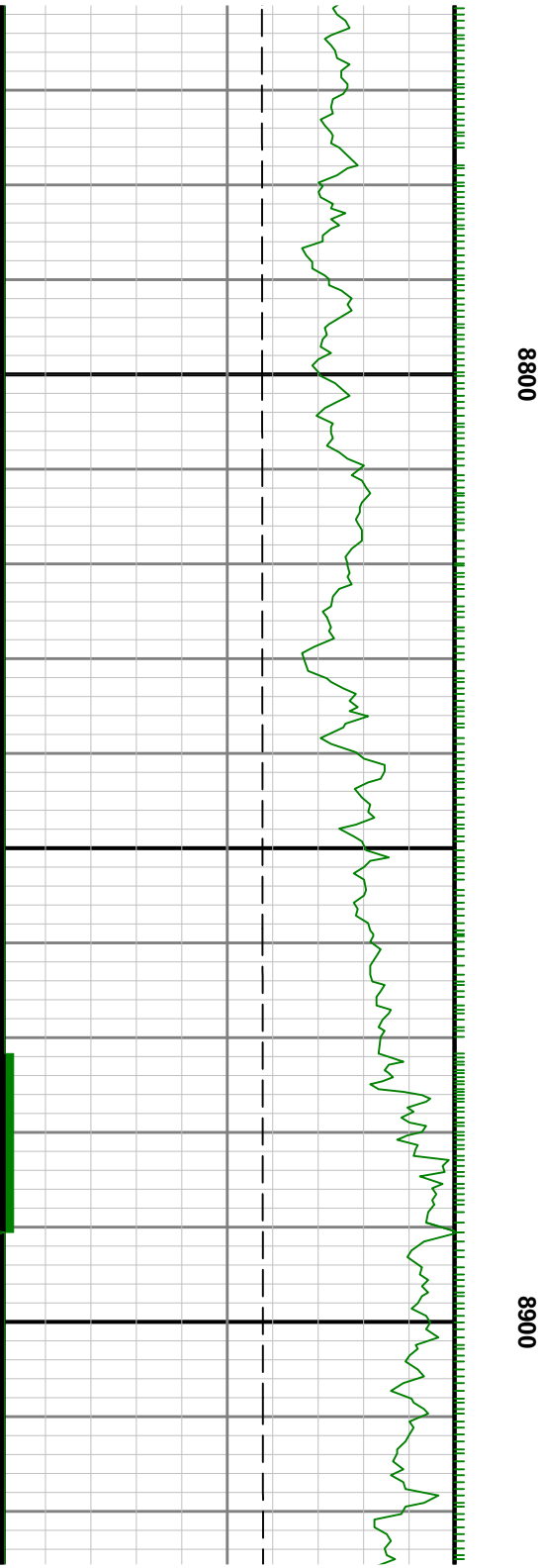


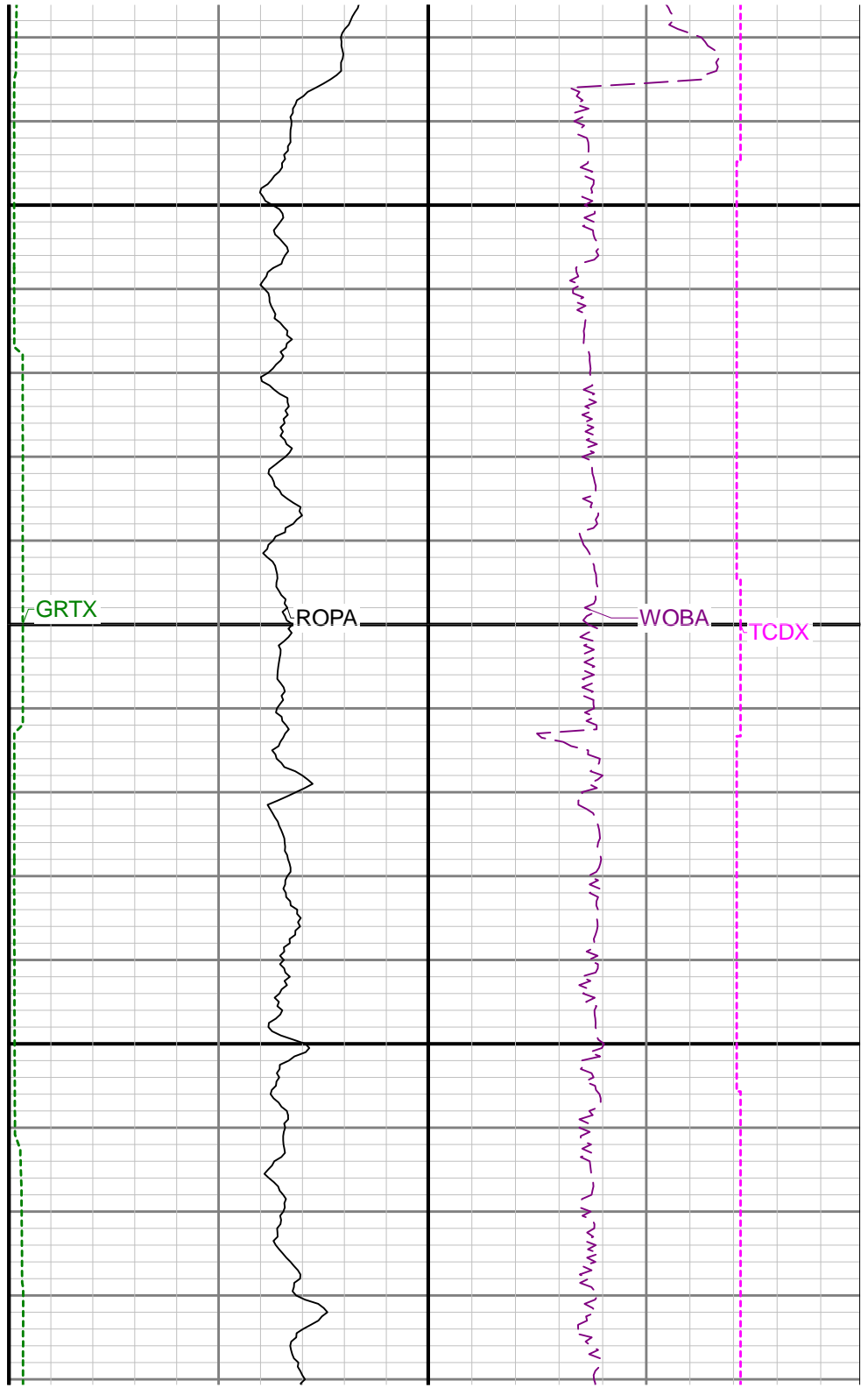
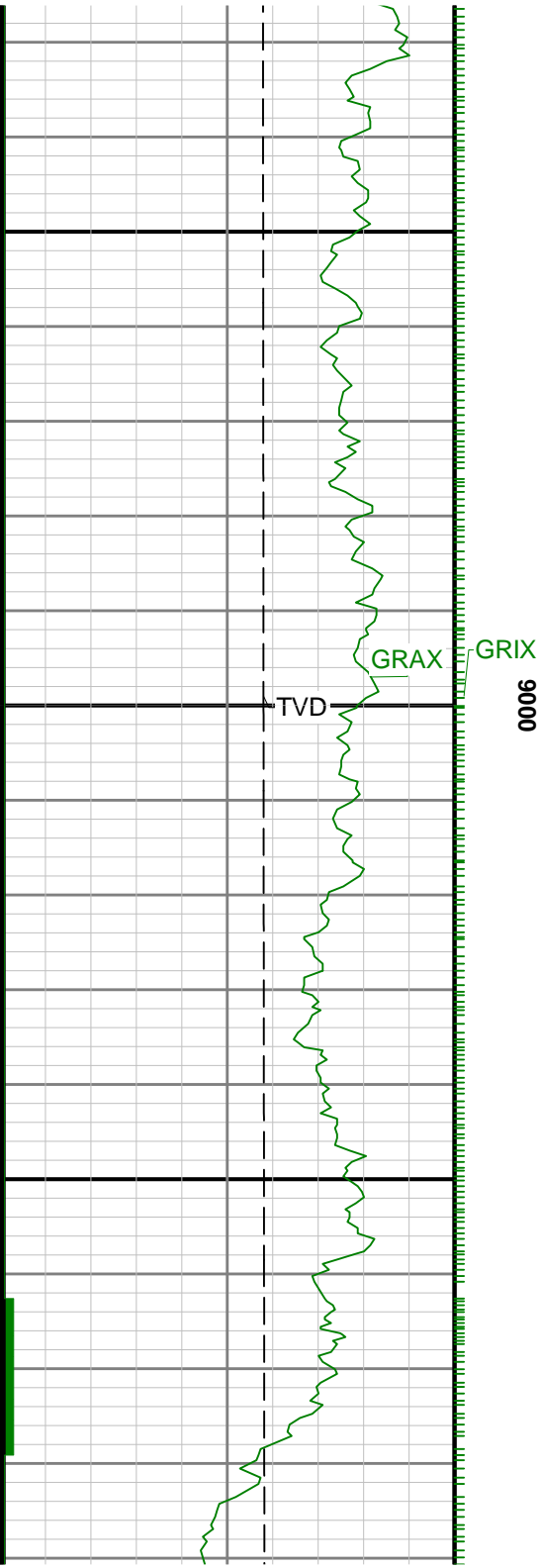
8500

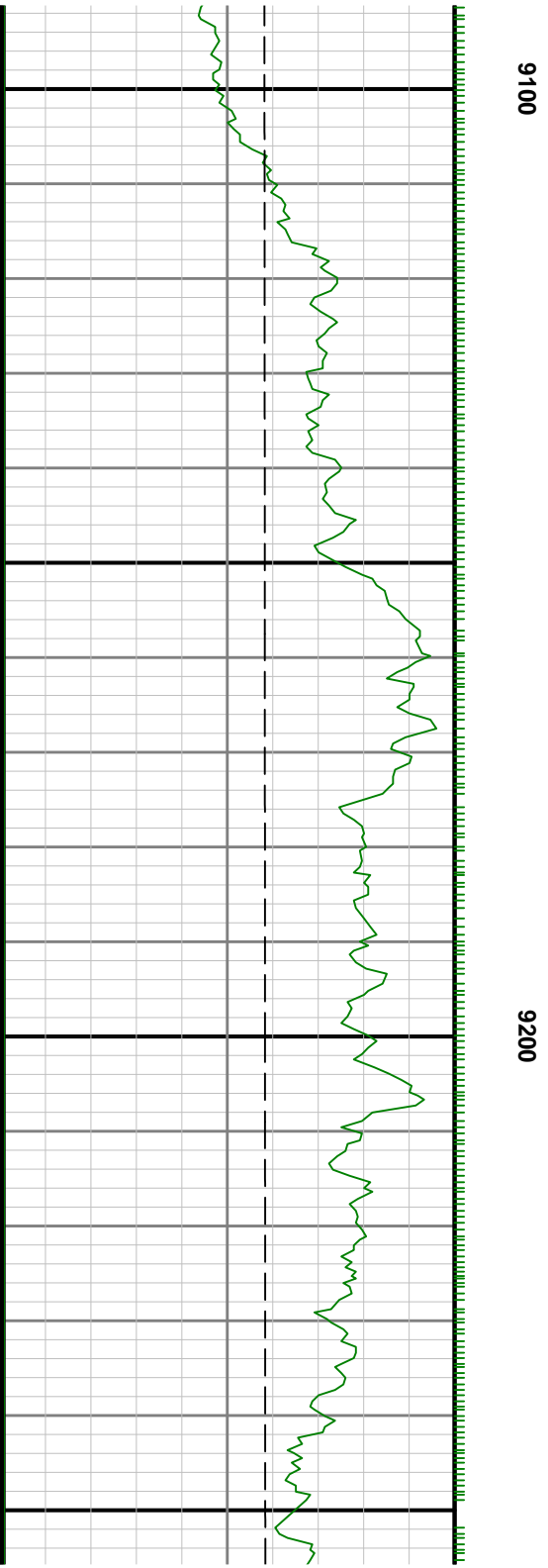
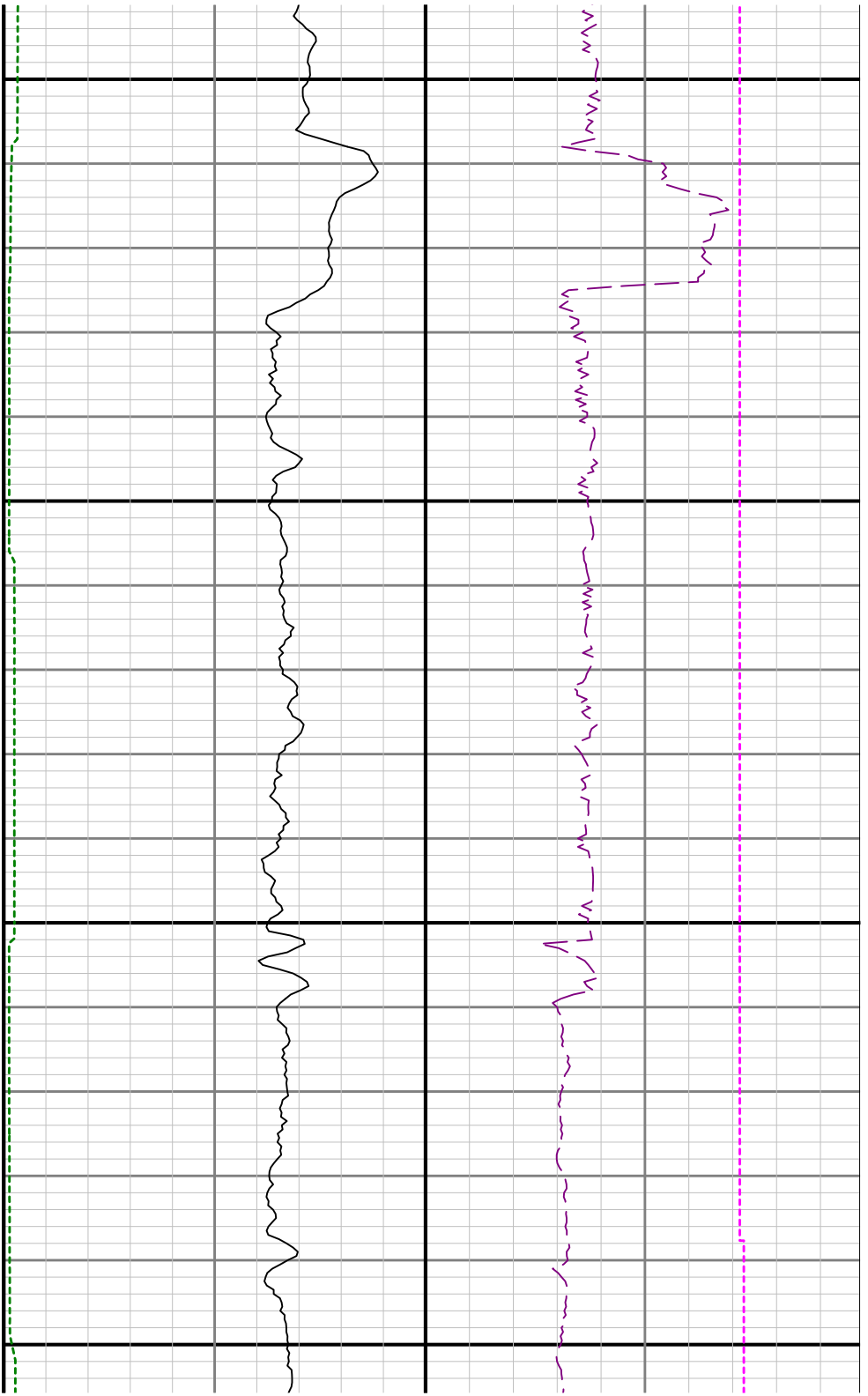


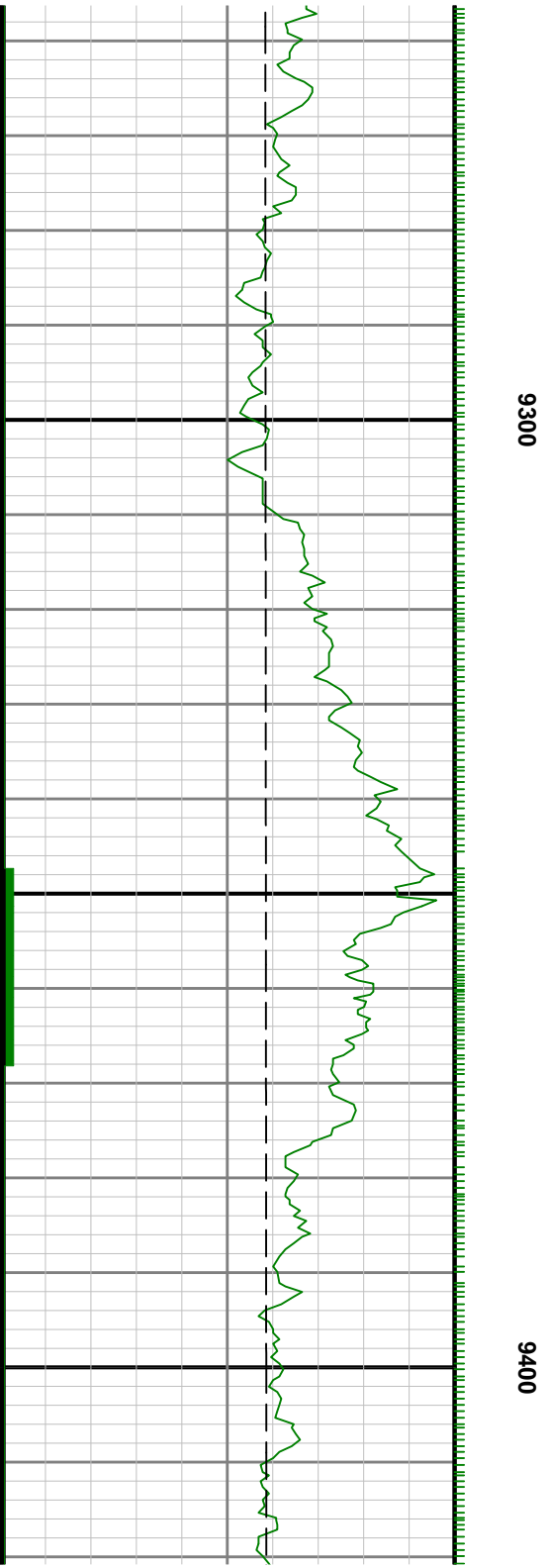




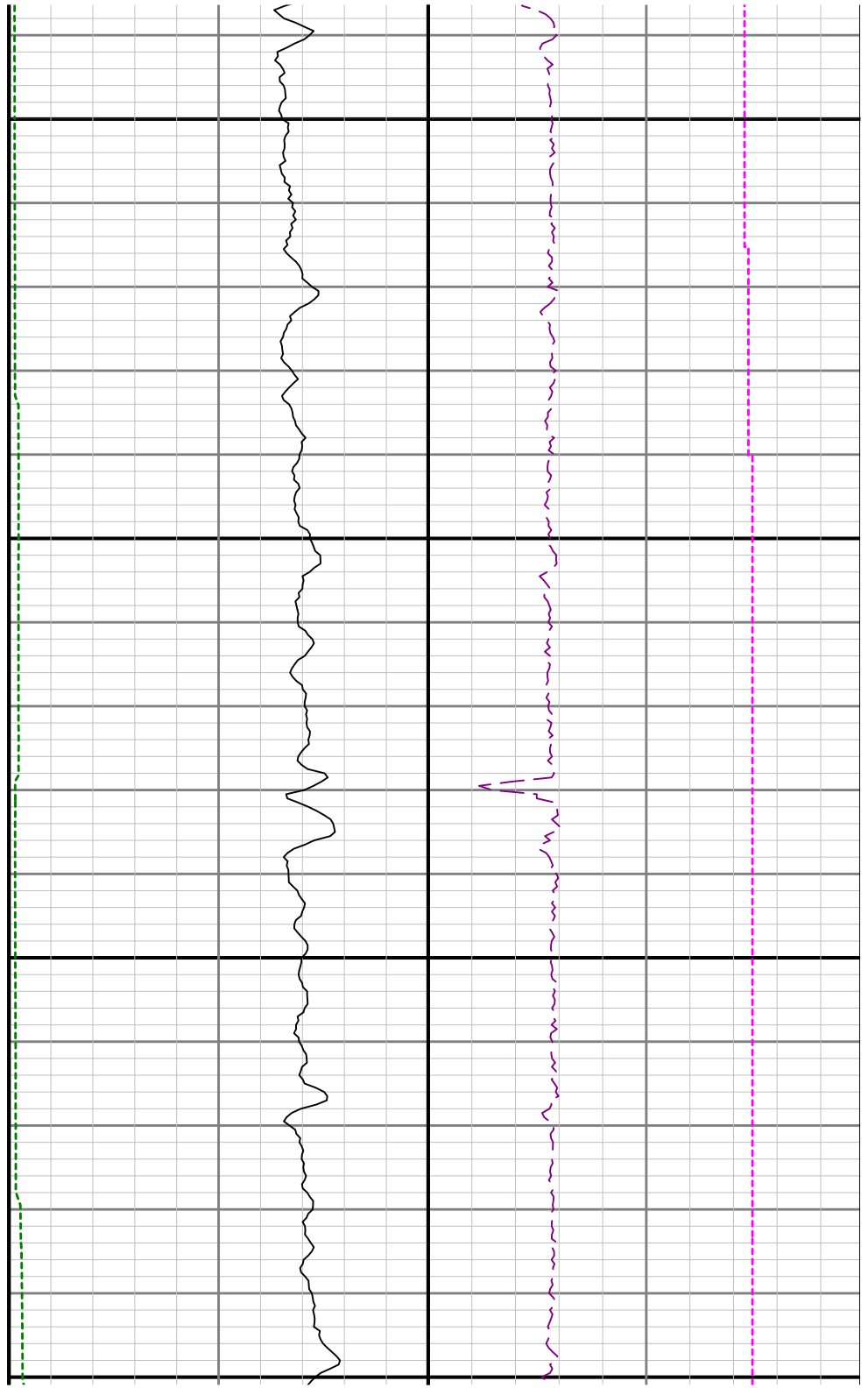
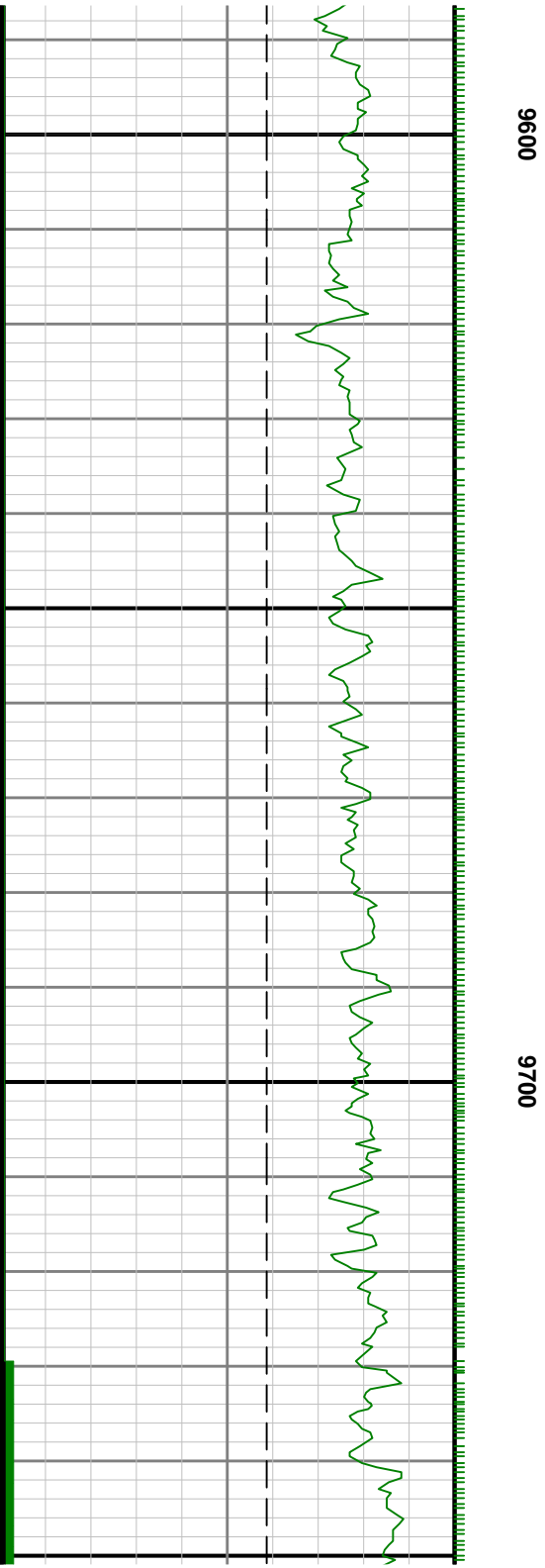


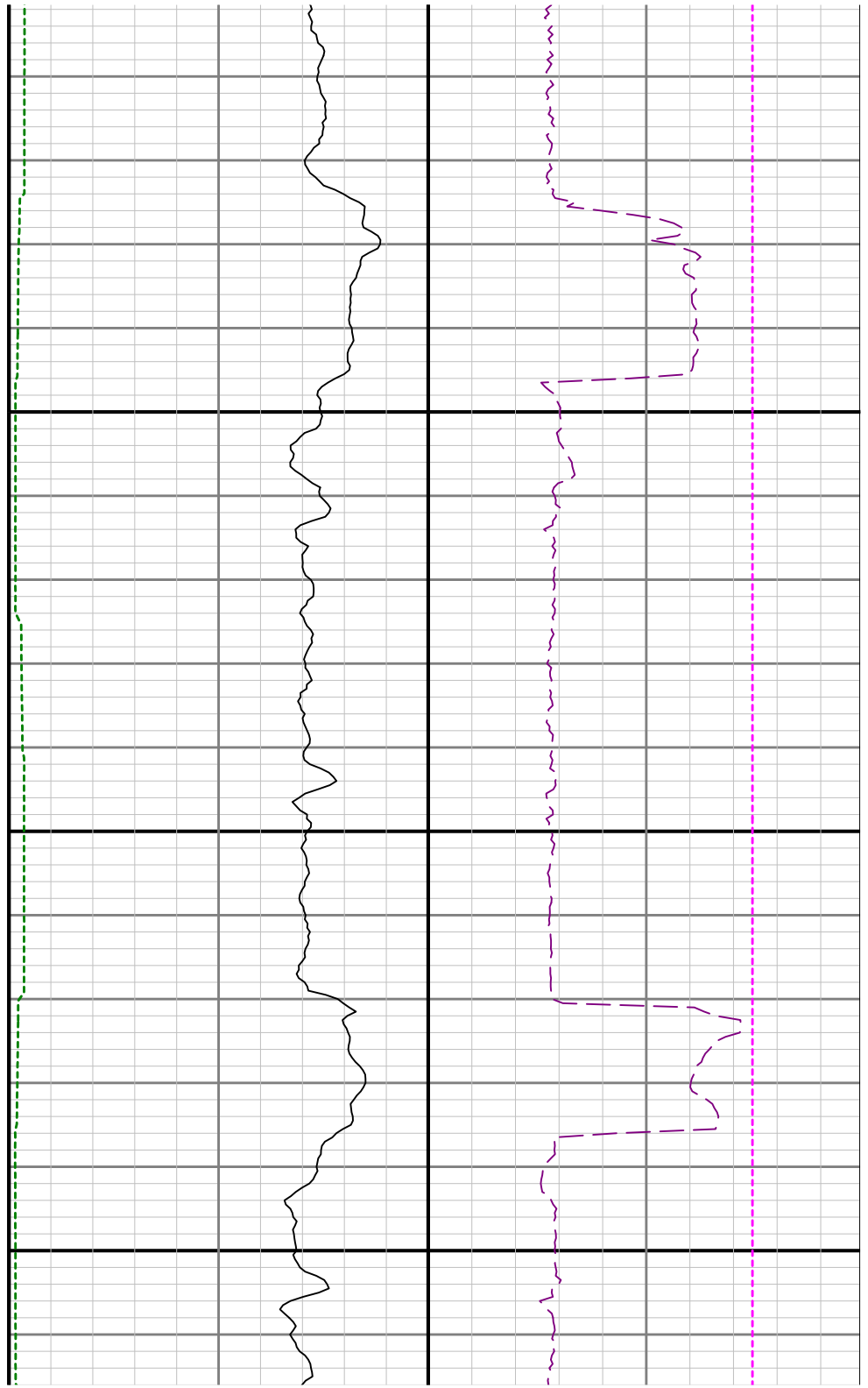
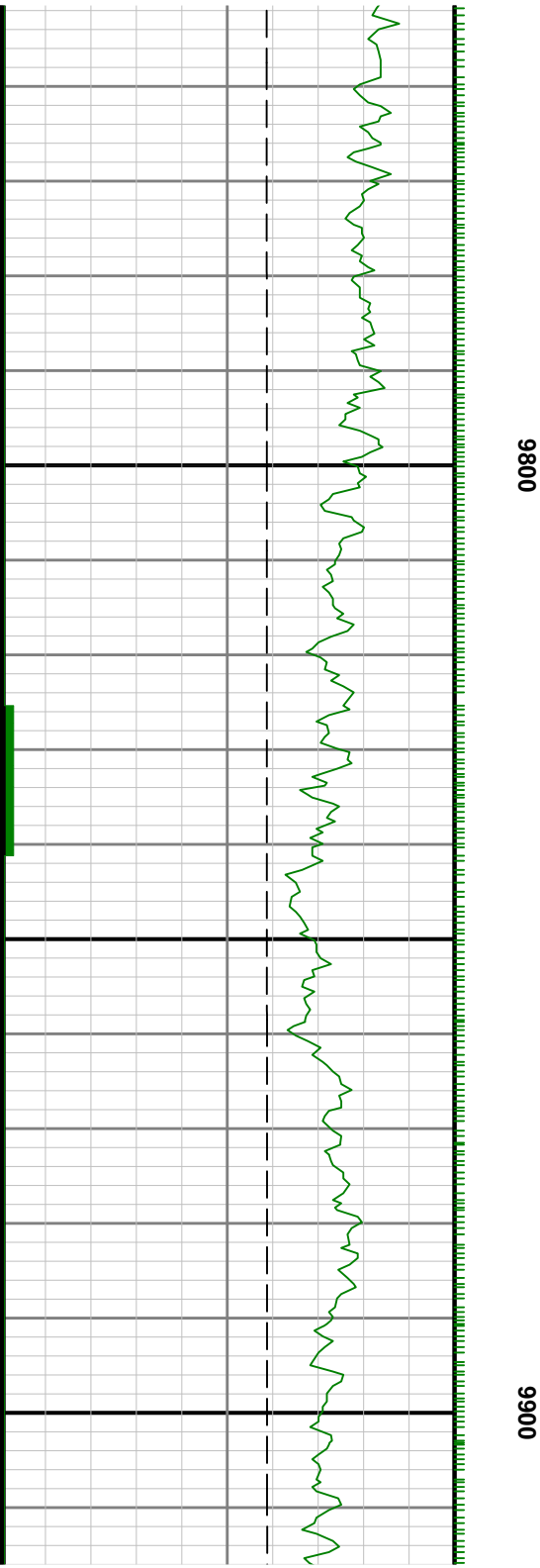




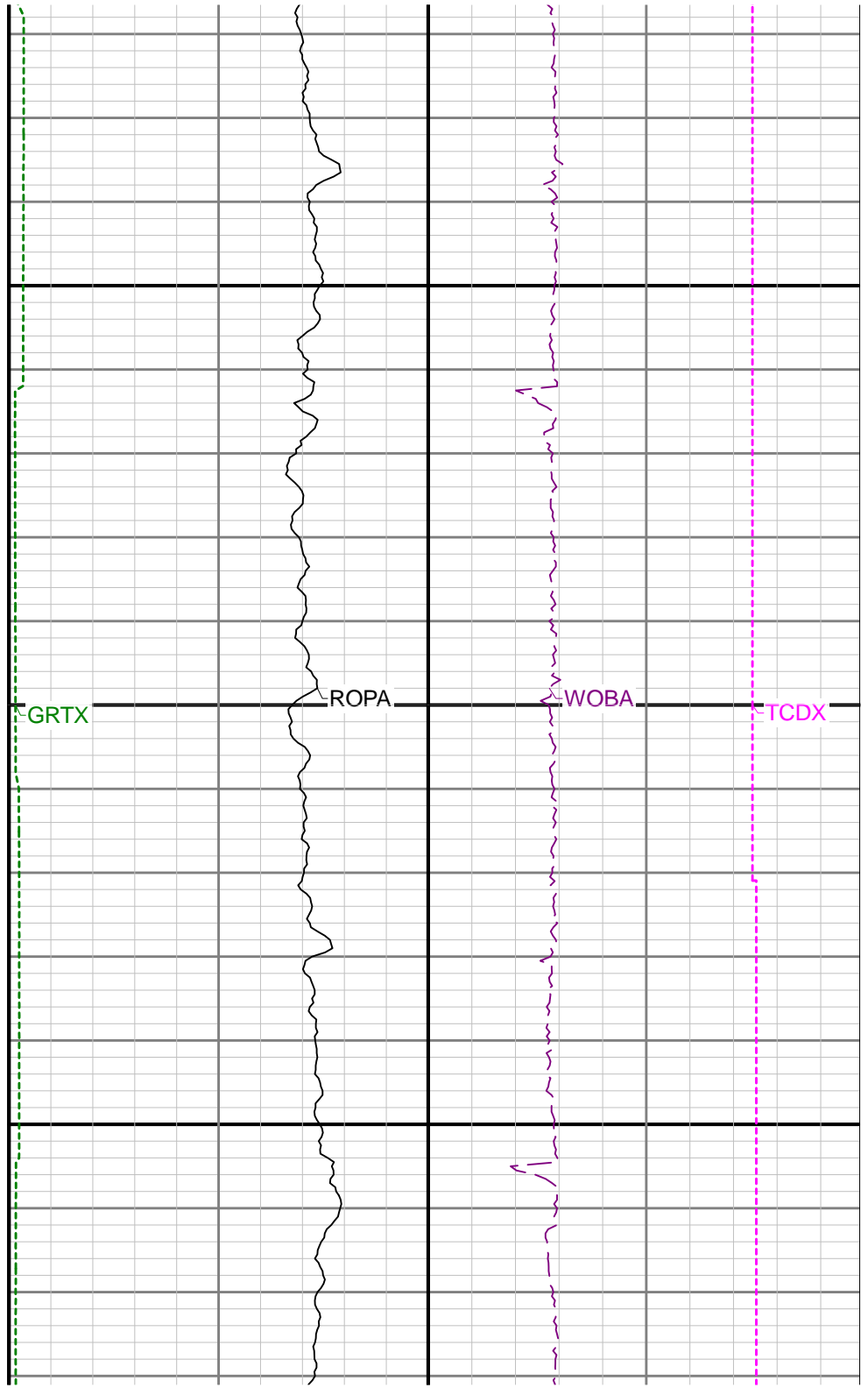
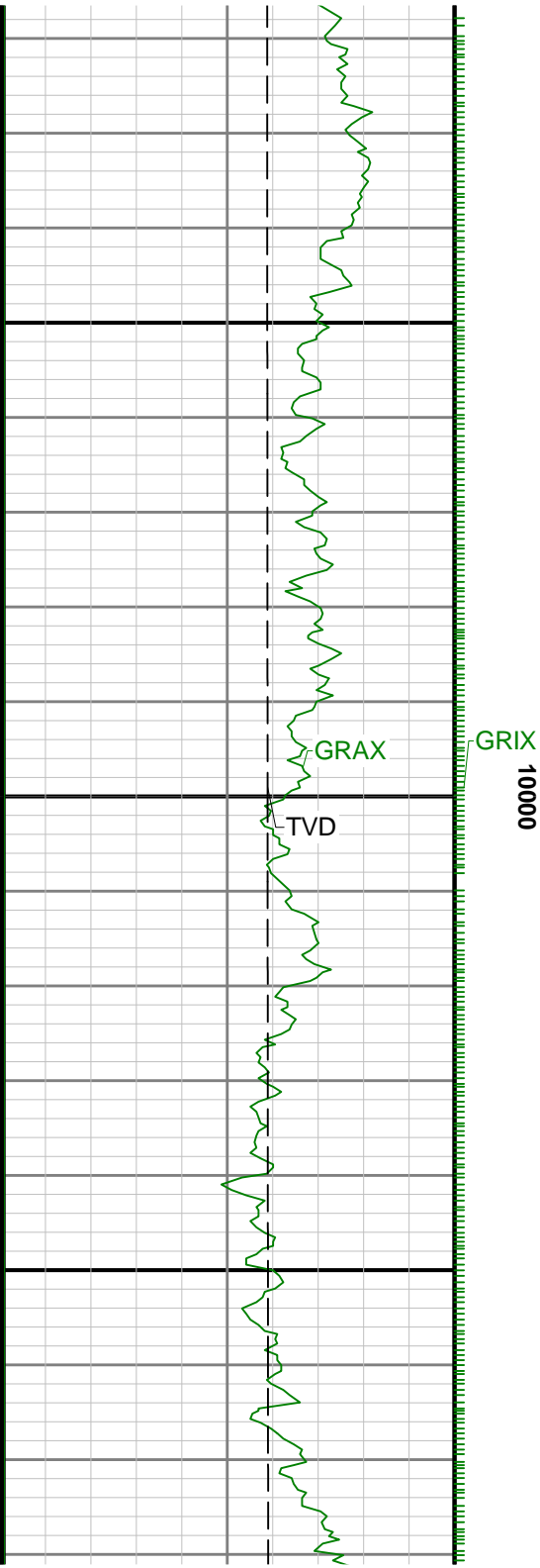


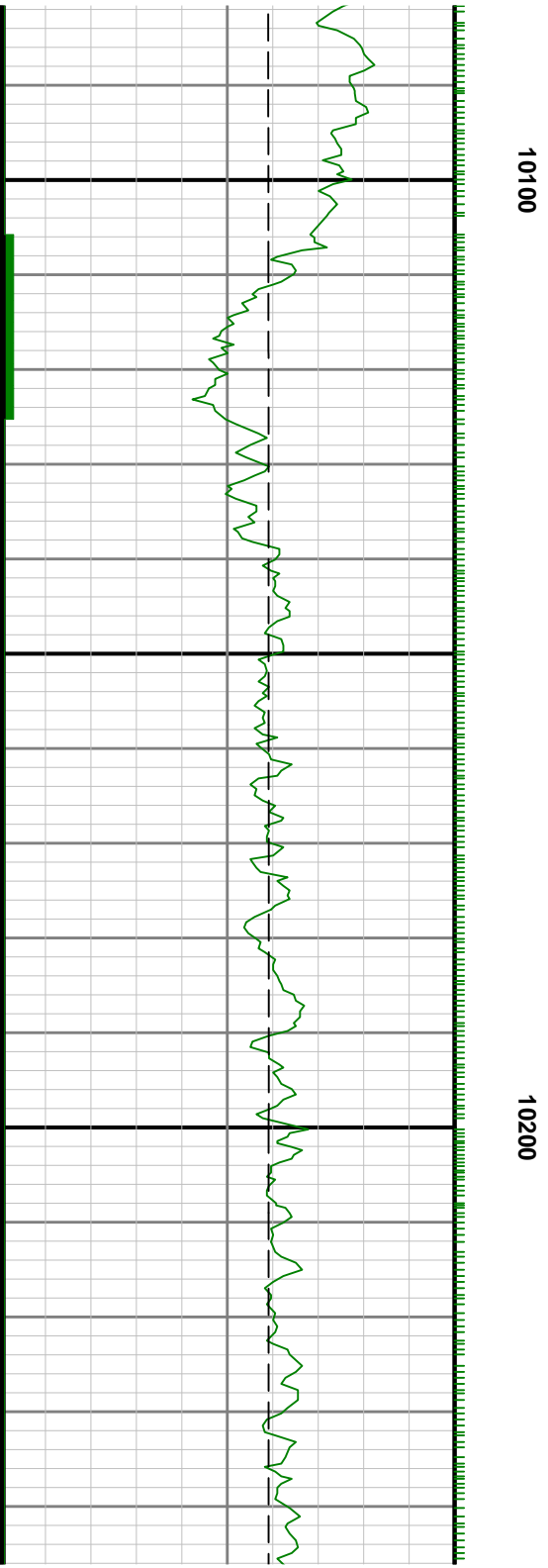
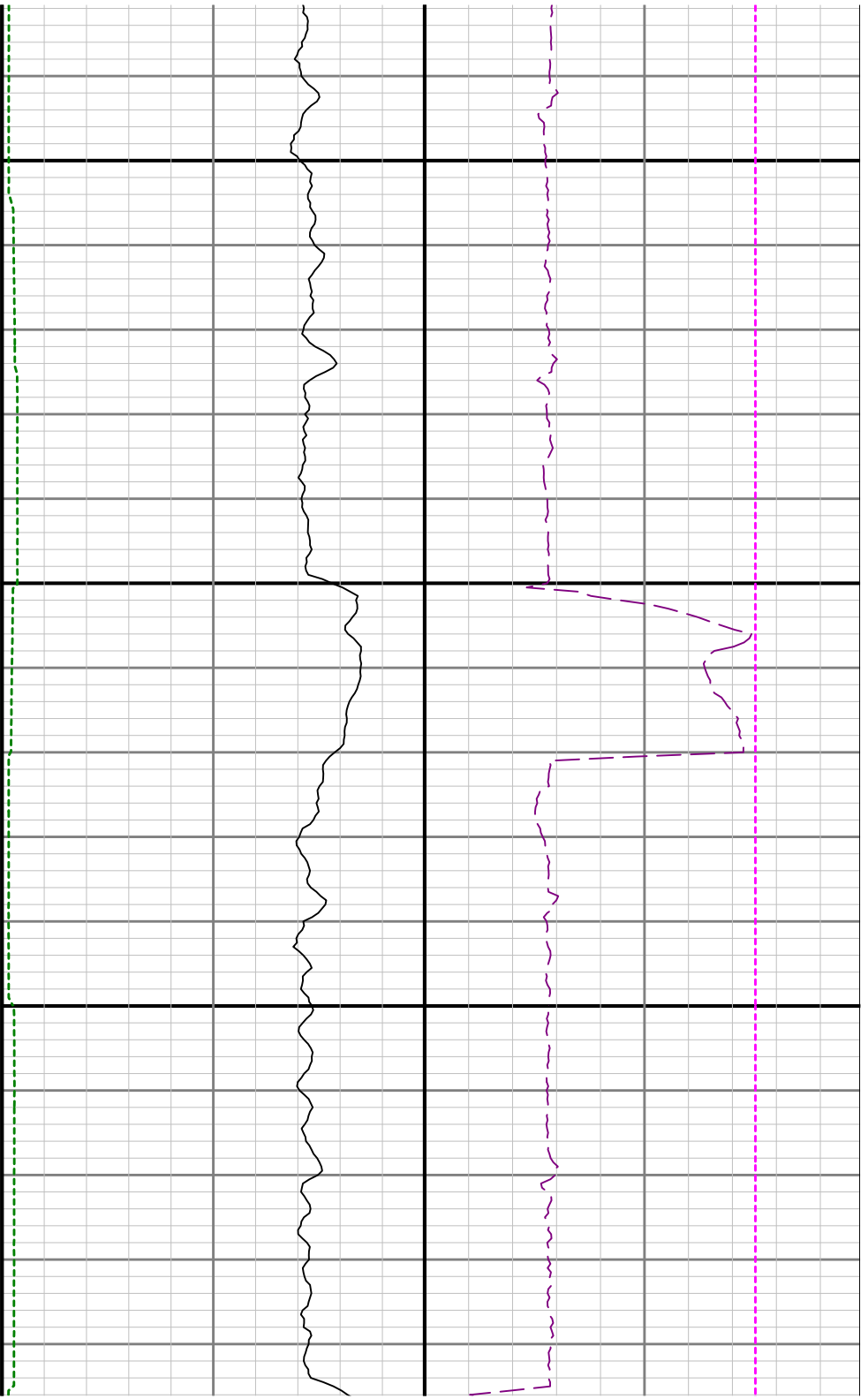


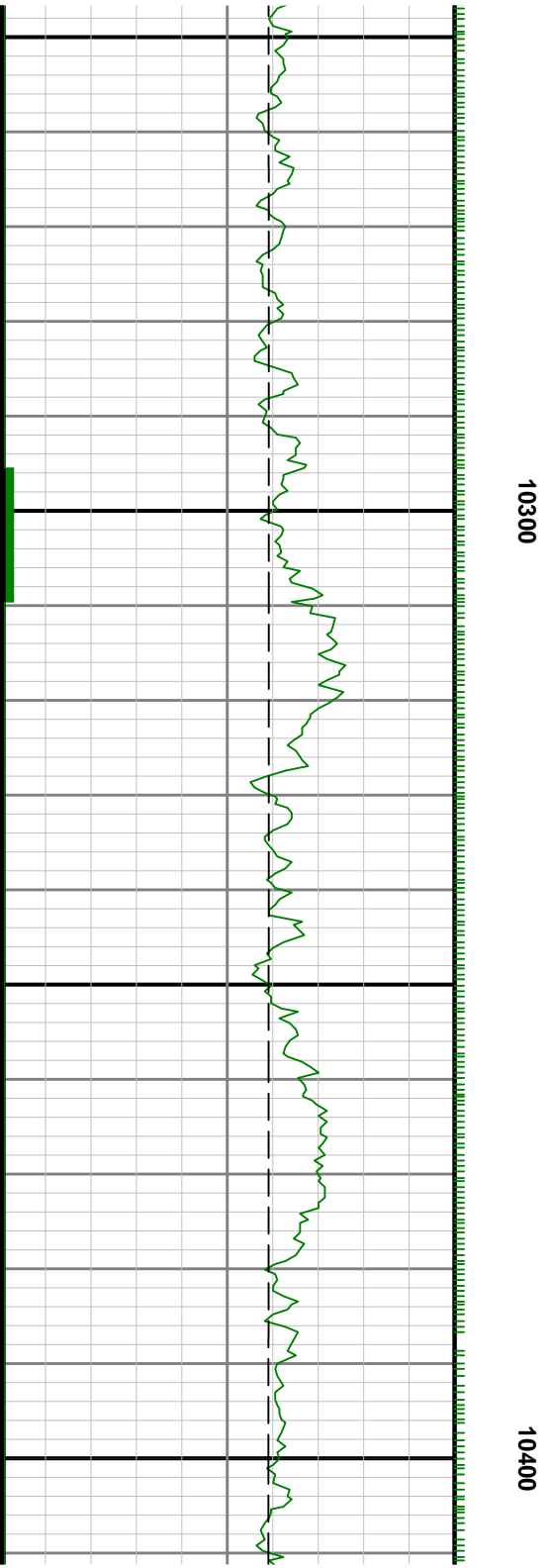
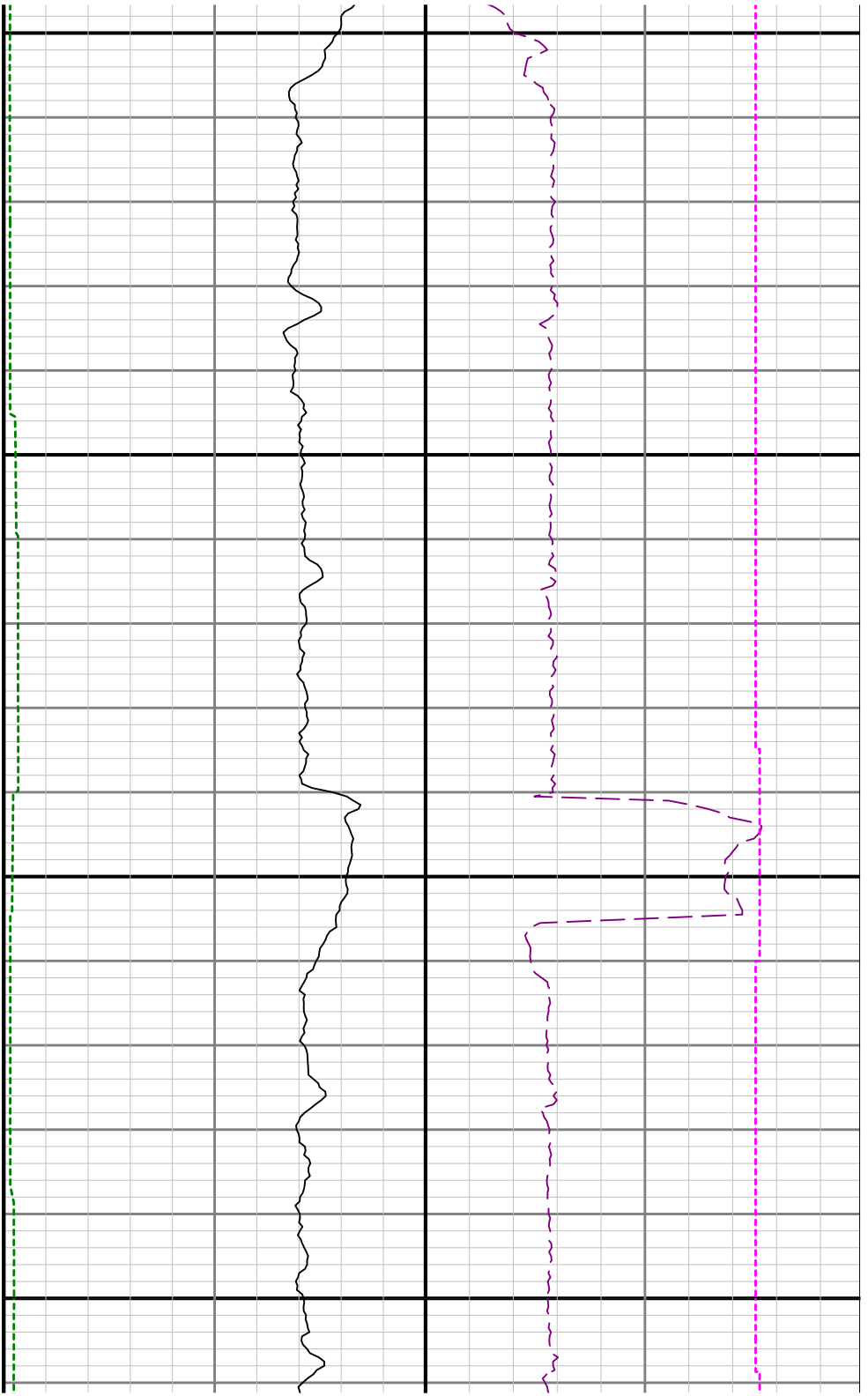


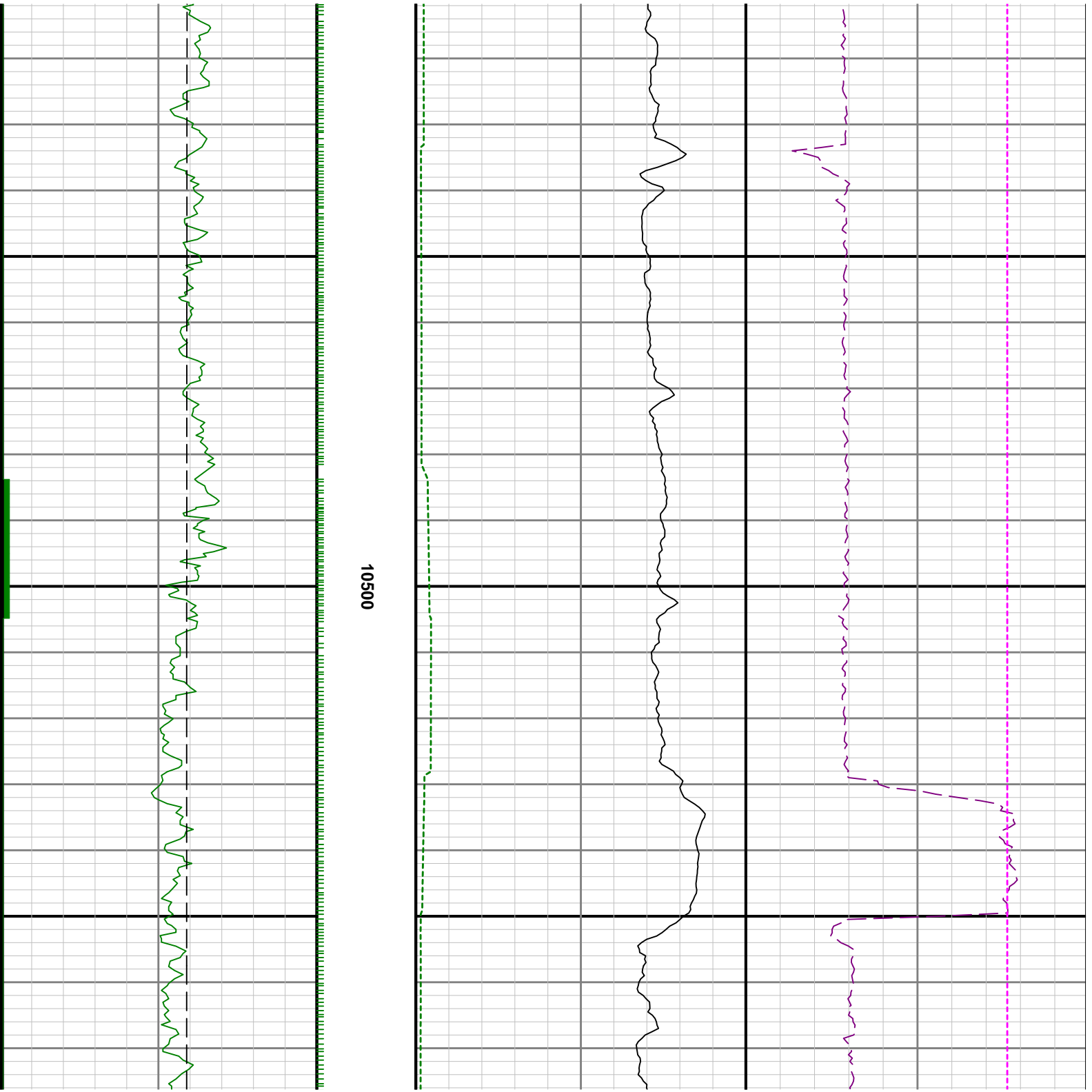


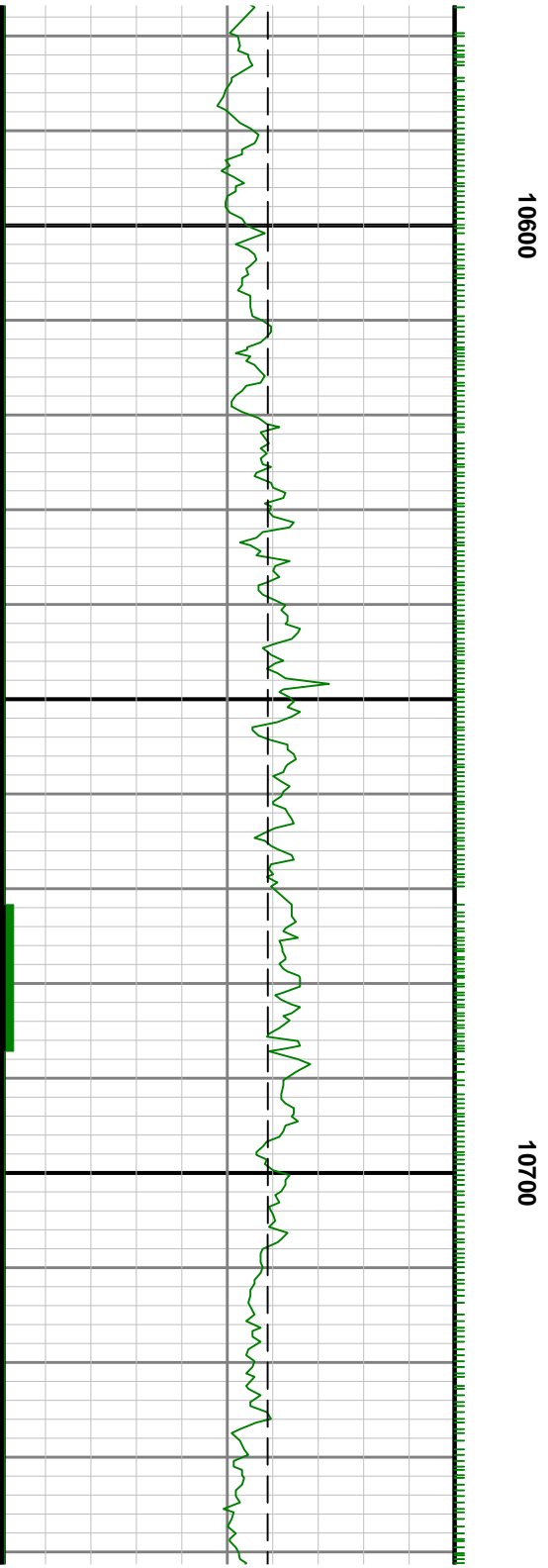
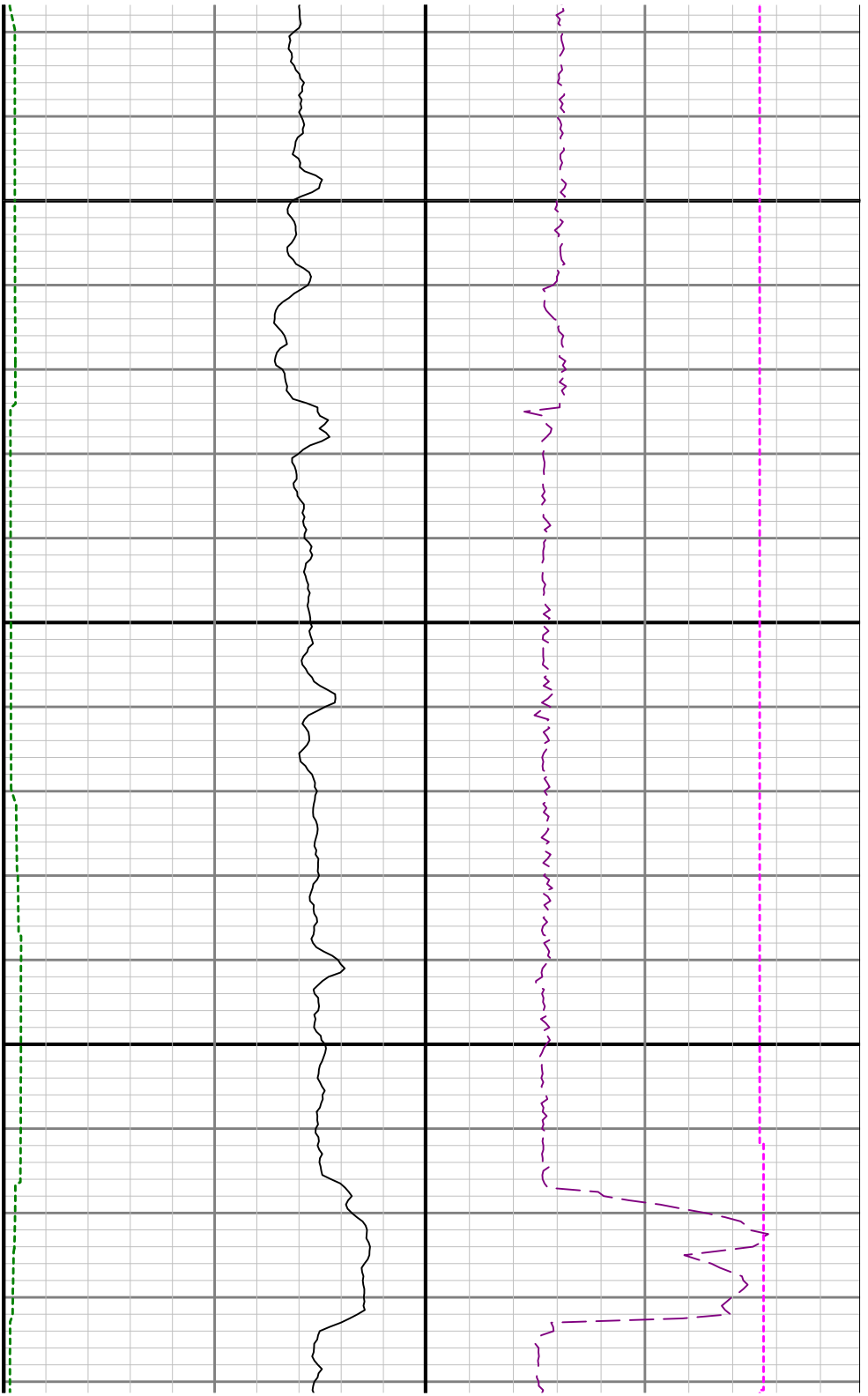


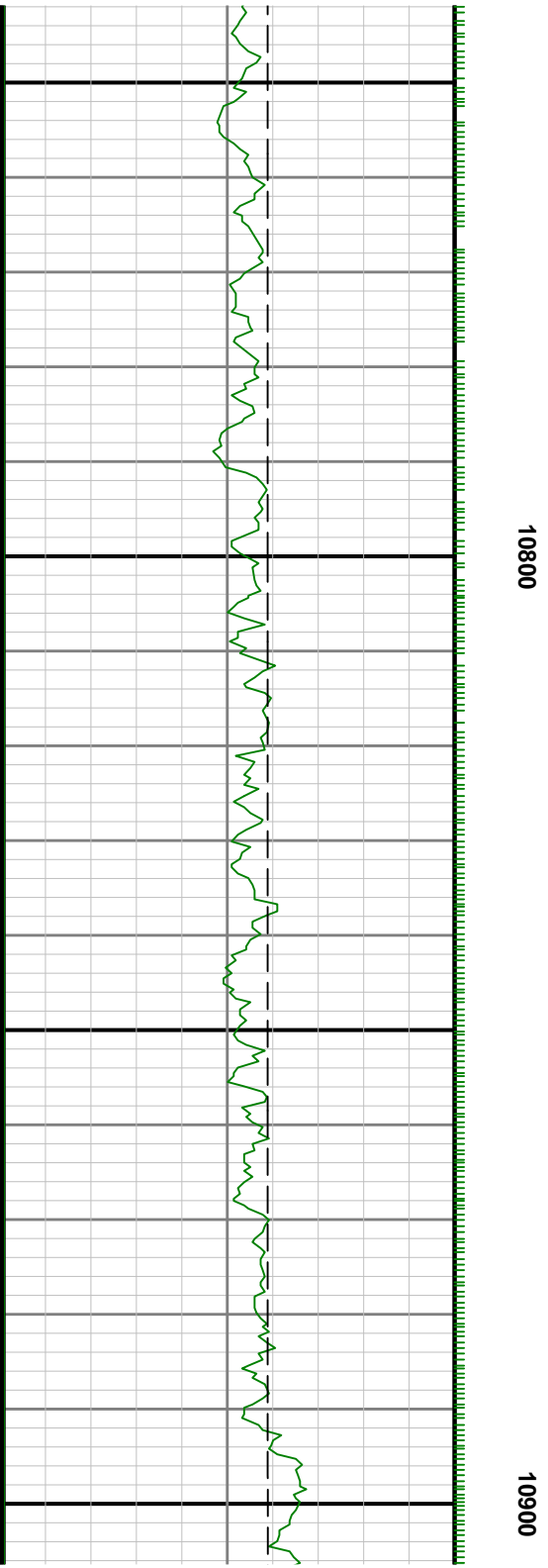
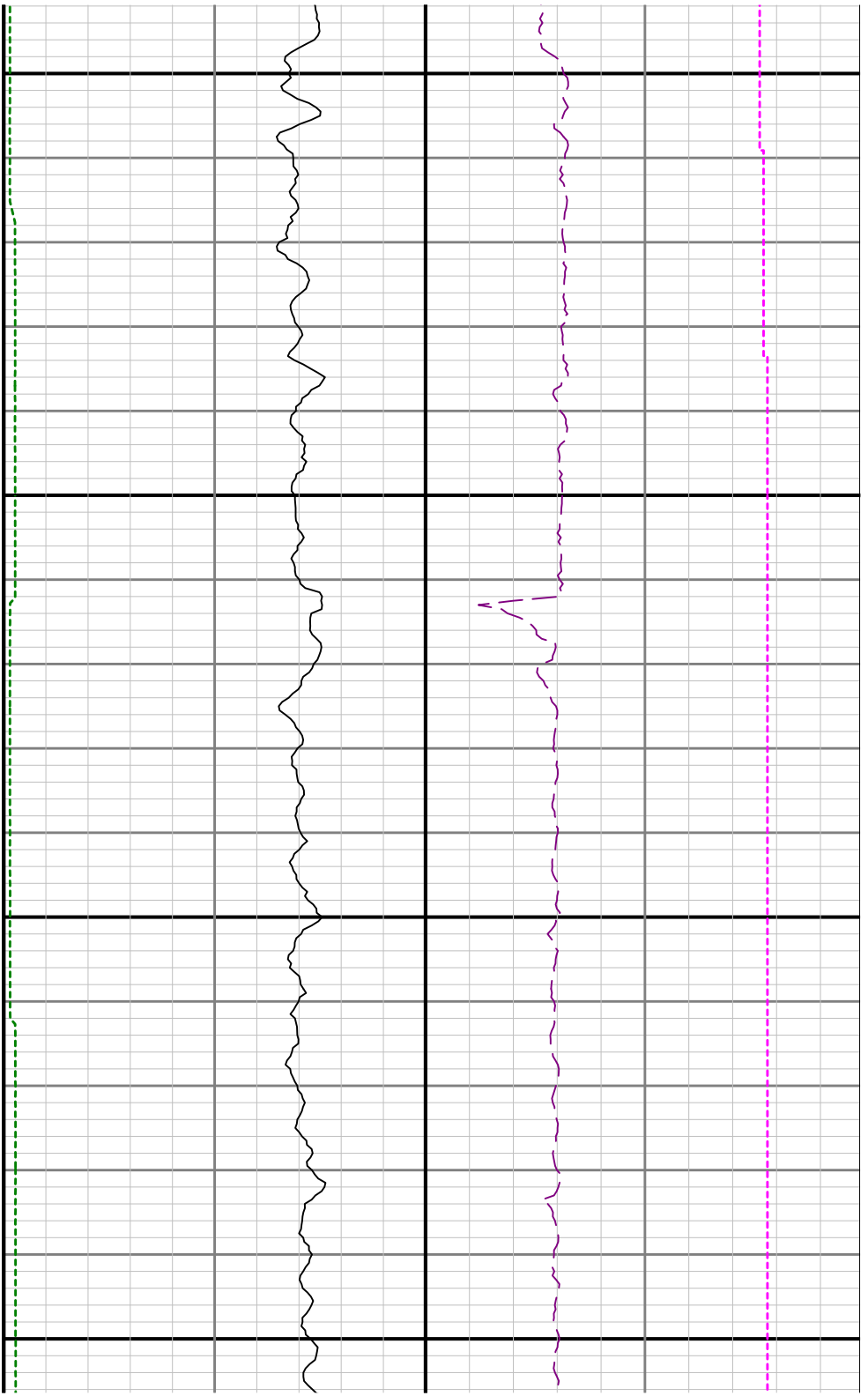


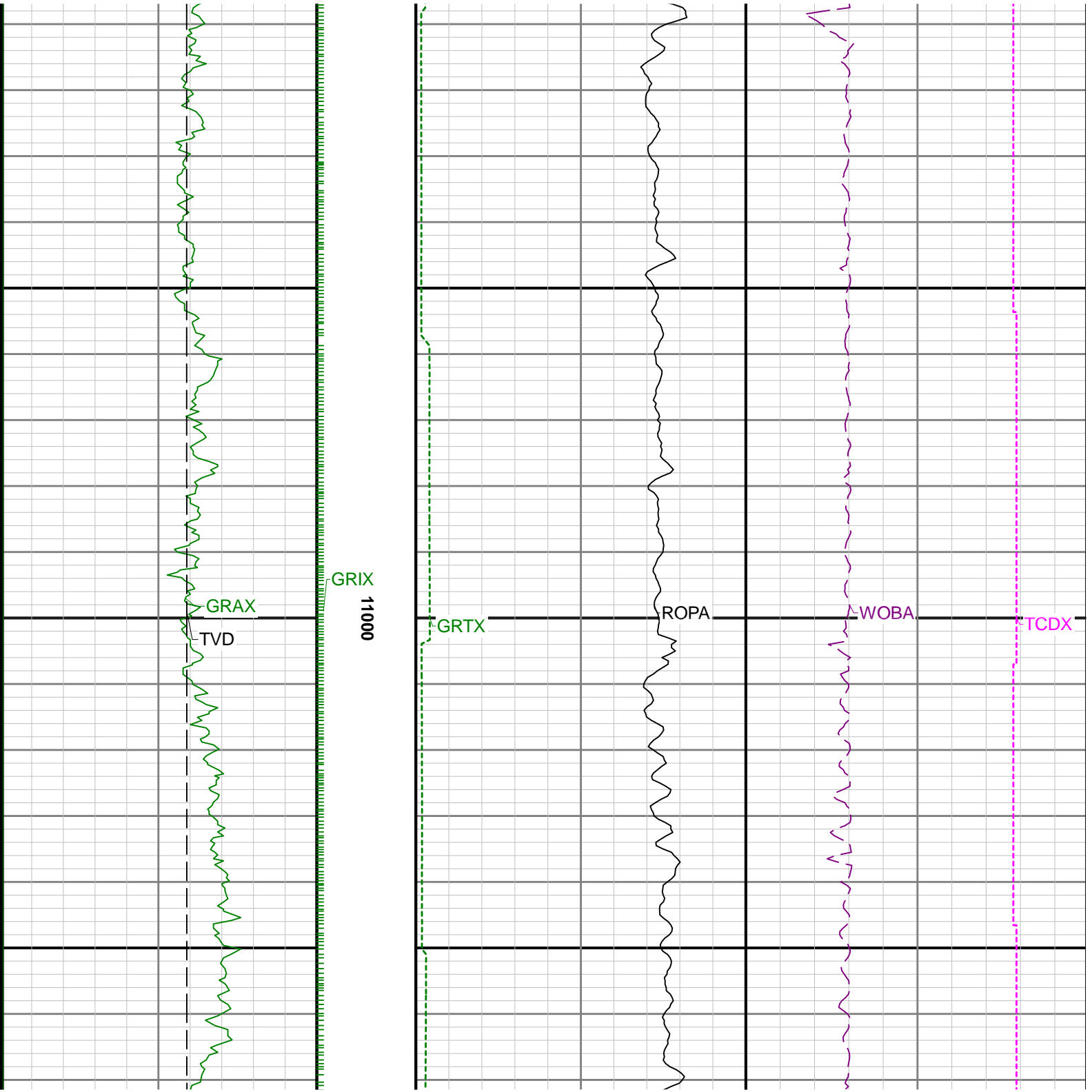








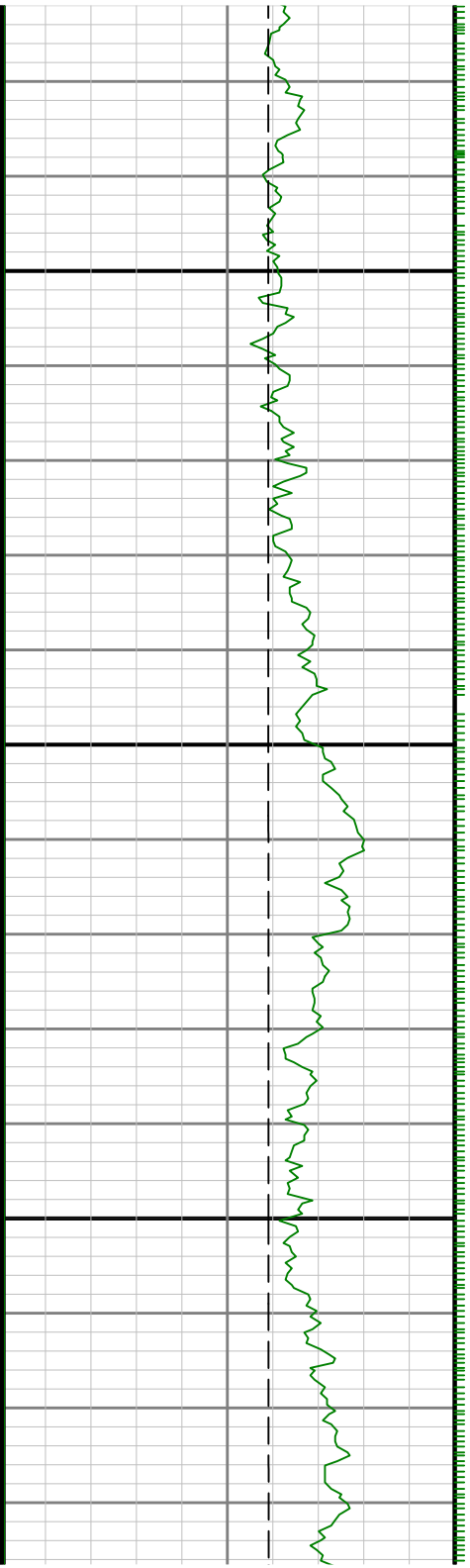




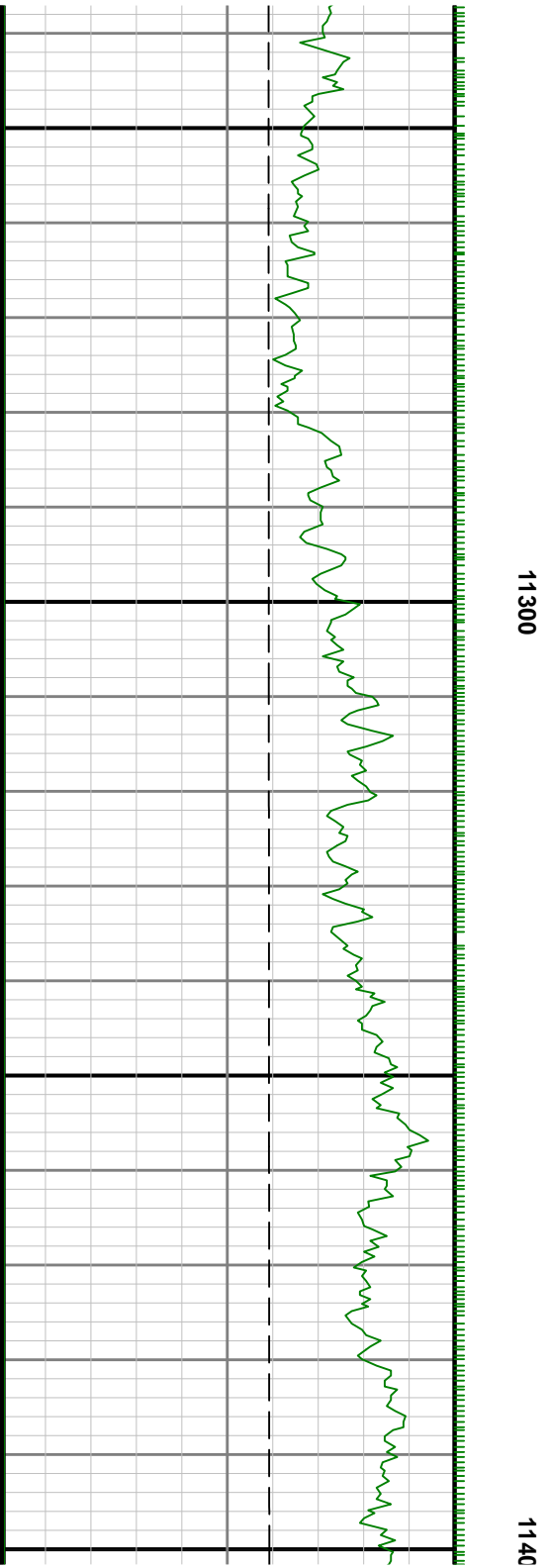
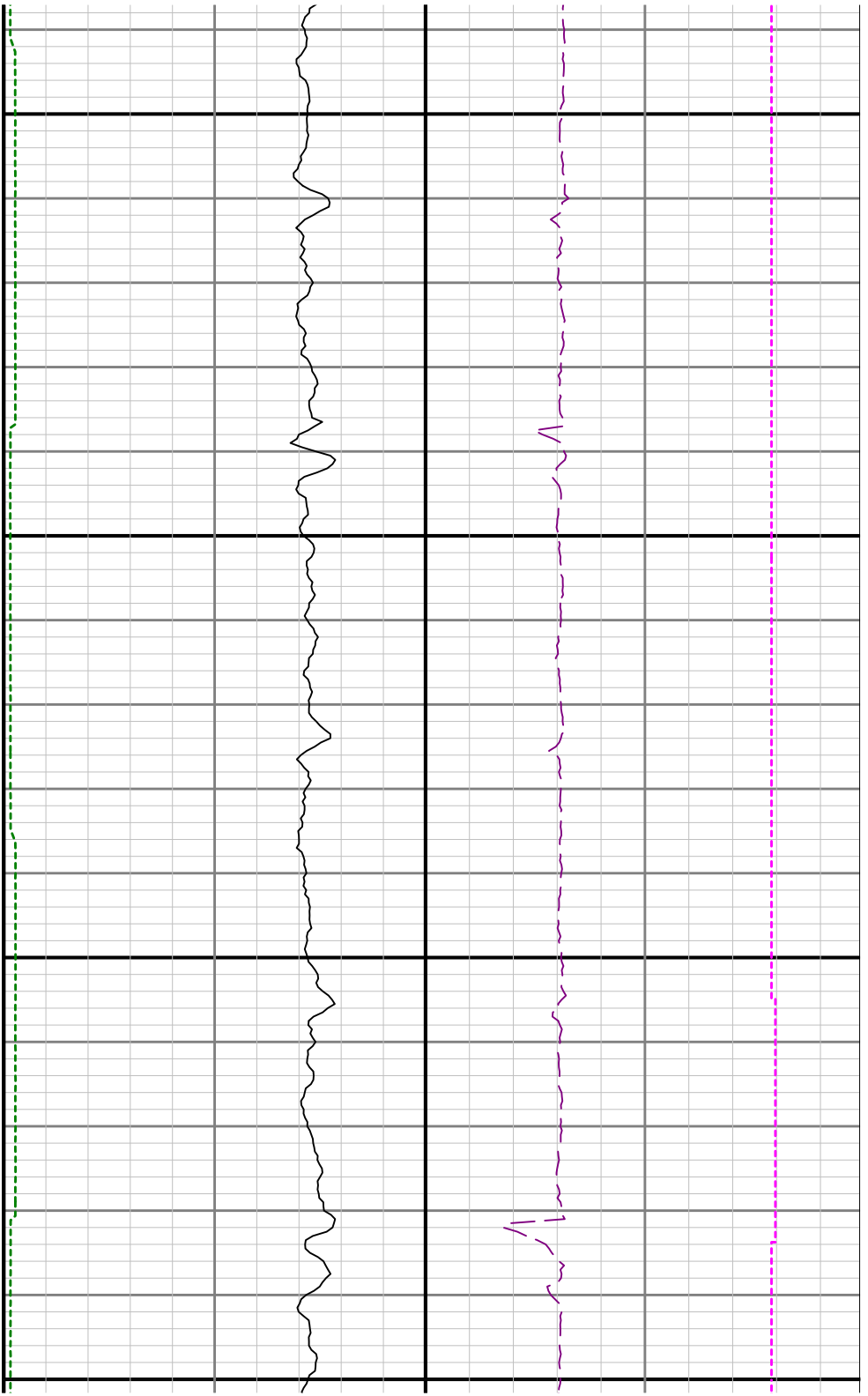


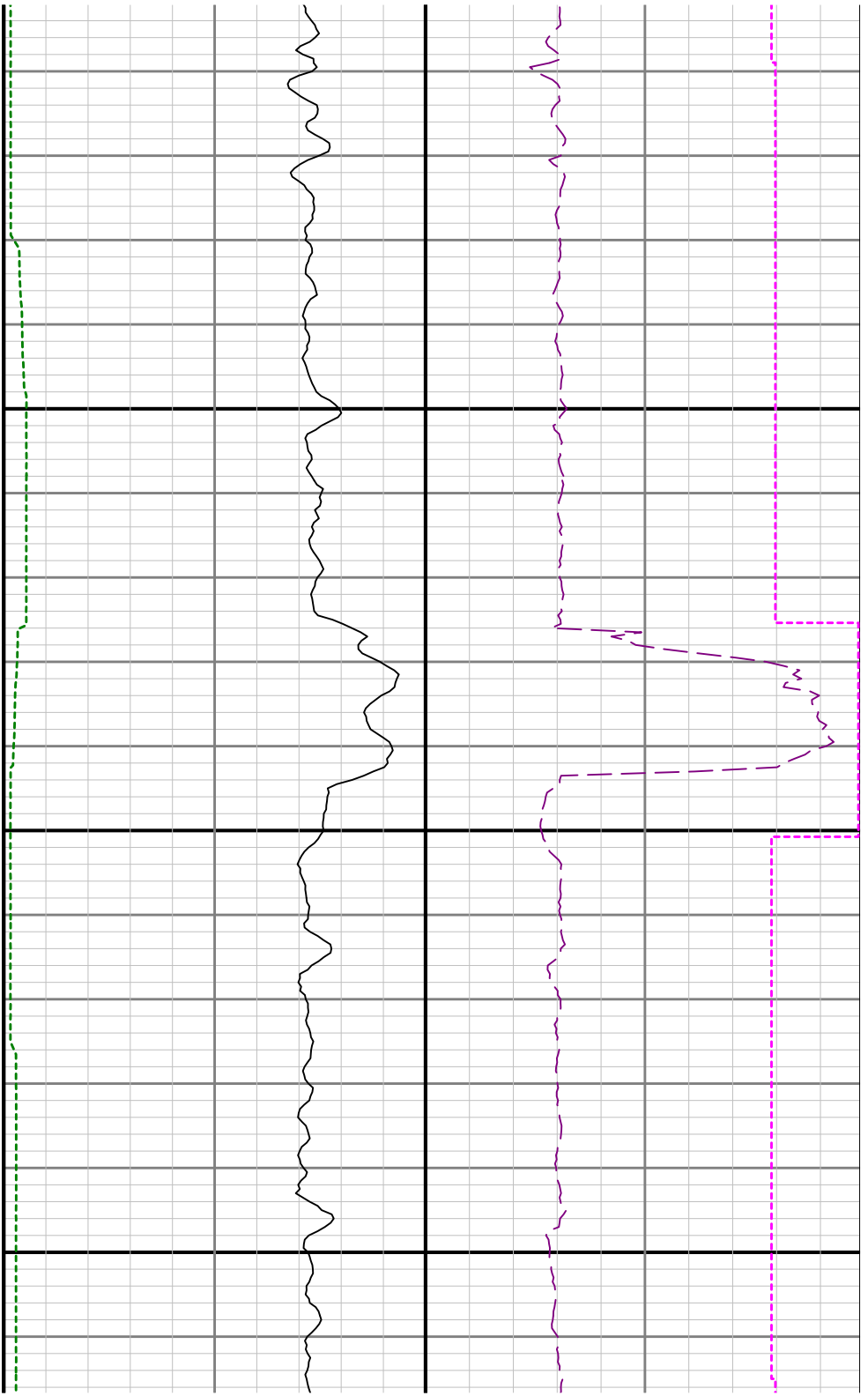
11100

11200









0

11500

