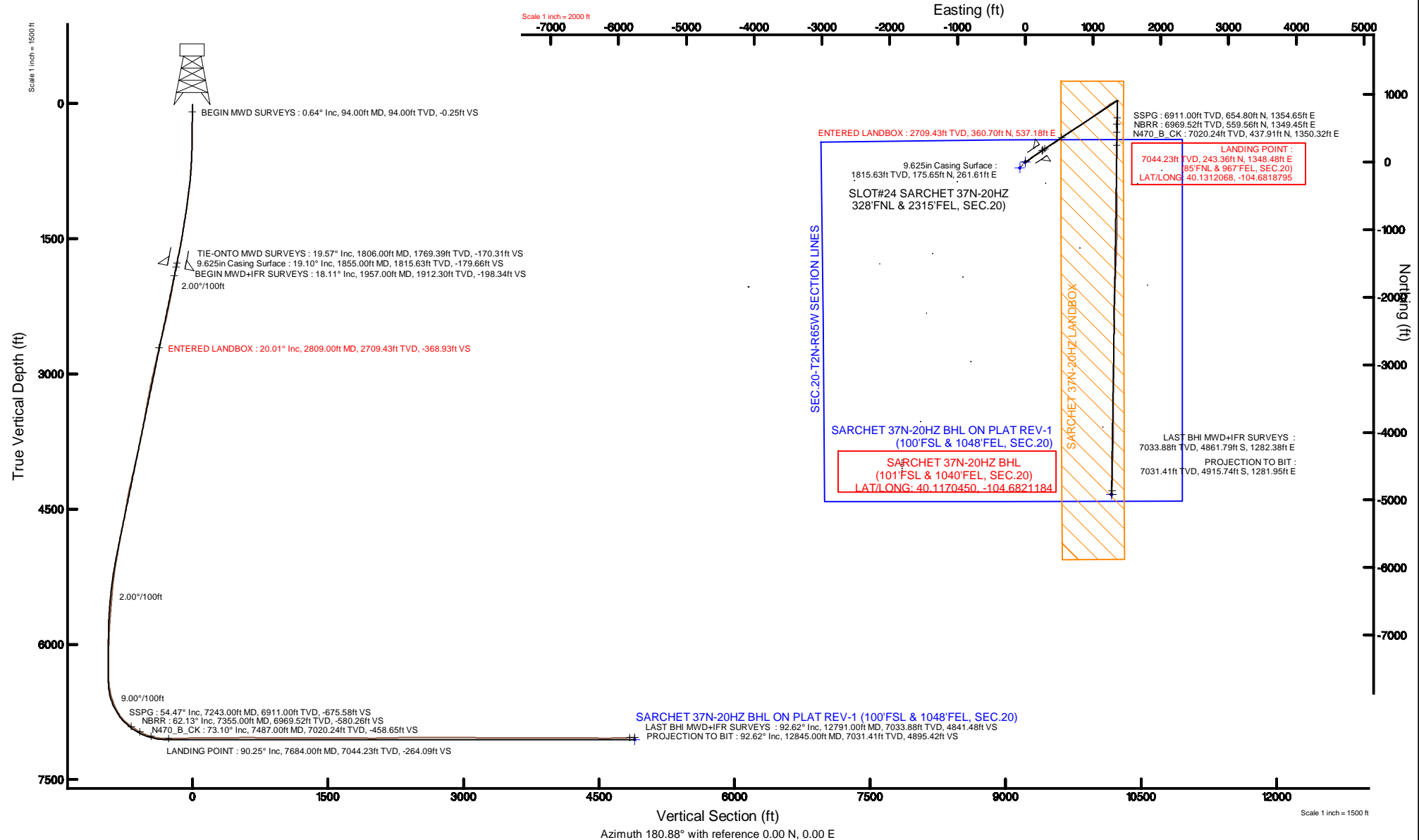


KERR-MCGEE OIL & GAS ONSHORE LP (WA)

Location: COLORADO Slot: SLOT#24 SARCHET 37N-20HZ (328°FNL & 2315°FEL, SEC.20)
Field: WELD COUNTY (UTM/TRUE NORTH) Well: SARCHET 37N-20HZ
Facility: SEC.20-T2N-R65W Wellbore: SARCHET 37N-20HZ PWB

Plot reference wellpath is SARCHET 37N-20HZ (REV-A.0) PWP

True vertical depths are referenced to XTREME 24 (16KB) (RKB)	Grid System: NAD83 / UTM Zone 13 North, US feet
Measured depths are referenced to XTREME 24 (16KB) (RKB)	North Reference: True north
XTREME 24 (16KB) (RKB) to Mean Sea Level: 4930 feet	Scale: True distance
Mean Sea Level to Mud line (At Slot: SLOT#24 SARCHET 37N-20HZ (328°FNL & 2315°FEL, SEC.20)): 0 feet	Depths are in feet
Coordinates are in feet referenced to Slot	Created by: amarc on 22/Sep/2015





Actual Wellpath Report

SARCHET 37N-20HZ AWP
Page 1 of 6



REFERENCE WELLPATH IDENTIFICATION			
Operator	KERR-MCGEE OIL & GAS ONSHORE LP (WA)	Slot	SLOT#24 SARCHET 37N-20HZ (328°FNL & 2315°FEL, SEC.20)
Area	COLORADO	Well	SARCHET 37N-20HZ
Field	WELD COUNTY (UTM/TRUE NORTH)	Wellbore	SARCHET 37N-20HZ AWB <12845>
Facility	SEC.20-T2N-R65W		

REPORT SETUP INFORMATION			
Projection System	NAD83 / UTM Zone 13 North, US feet	Software System	WellArchitect® 4.0.0
North Reference	True	User	Amarcar
Scale	0.999609	Report Generated	22/Sep/2015 at 15:43
Convergence at slot	0.20° East	Database/Source file	KERR MCGEE UTM/SARCHET_37N-20HZ_AWB_12845_.xml

WELLPATH LOCATION						
	Local coordinates		Grid coordinates		Geographic coordinates	
	North[ft]	East[ft]	Easting[US ft]	Northing[US ft]	Latitude	Longitude
Slot Location	4532.30	1819.92	1727988.86	14574422.82	40°07'49.940"N	104°41'12.127"W
Facility Reference Pt			1726185.29	14569886.05	40°07'05.152"N	104°41'35.557"W
Field Reference Pt			1698235.31	14552047.82	40°04'09.600"N	104°47'36.000"W

WELLPATH DATUM			
Calculation method	Minimum curvature	XTREME 24 (16'KB) (RKB) to Facility Vertical Datum	4930.00ft
Horizontal Reference Pt	Slot	XTREME 24 (16'KB) (RKB) to Mean Sea Level	4930.00ft
Vertical Reference Pt	XTREME 24 (16'KB) (RKB)	XTREME 24 (16'KB) (RKB) to Mud Line at Slot (SLOT#24 SARCHET 37N-20HZ (328°FNL & 2315°FEL, SEC.20))	4930.00ft
MD Reference Pt	XTREME 24 (16'KB) (RKB)	Section Origin	N 0.00, E 0.00 ft
Field Vertical Reference	Mean Sea Level	Section Azimuth	180.88°

REFERENCE WELLPATH IDENTIFICATION

Operator	KERR-MCGEE OIL & GAS ONSHORE LP (WA)	Slot	SLOT#24 SARCHET 37N-20HZ (328°FNL & 2315°FEL, SEC.20)
Area	COLORADO	Well	SARCHET 37N-20HZ
Field	WELD COUNTY (UTM/TRUE NORTH)	Wellbore	SARCHET 37N-20HZ AWP <12845>
Facility	SEC.20-T2N-R65W		

WELLPATH DATA (143 stations) † = interpolated/extrapolated station

MD [ft]	Inclination [°]	Azimuth [°]	TVD [ft]	Vert Sect [ft]	North [ft]	East [ft]	Latitude	Longitude	DLS [°/100ft]	Comments
0.00†	0.000	305.770	0.00	0.00	0.00	0.00	40°07'49.940"N	104°41'12.127"W	0.00	
16.00	0.000	305.770	16.00	0.00	0.00	0.00	40°07'49.940"N	104°41'12.127"W	0.00	
94.00	0.640	305.770	94.00	-0.25	0.25	-0.35	40°07'49.943"N	104°41'12.132"W	0.82	BEGIN MWD SURVEYS
184.00	0.350	60.610	184.00	-0.68	0.68	-0.52	40°07'49.947"N	104°41'12.134"W	0.94	
274.00	1.710	73.120	273.98	-1.22	1.21	1.00	40°07'49.952"N	104°41'12.114"W	1.52	
382.00	2.850	71.510	381.89	-2.61	2.53	5.09	40°07'49.965"N	104°41'12.061"W	1.06	
472.00	4.050	69.920	471.73	-4.48	4.33	10.20	40°07'49.983"N	104°41'11.996"W	1.34	
562.00	5.560	72.200	561.41	-7.02	6.75	17.34	40°07'50.007"N	104°41'11.904"W	1.69	
652.00	6.570	65.250	650.91	-10.64	10.24	26.16	40°07'50.041"N	104°41'11.790"W	1.39	
743.00	7.040	55.470	741.27	-16.13	15.58	35.48	40°07'50.094"N	104°41'11.670"W	1.37	
878.00	9.500	53.340	874.85	-27.71	26.92	51.24	40°07'50.206"N	104°41'11.467"W	1.84	
968.00	10.130	49.420	963.54	-37.48	36.51	63.21	40°07'50.301"N	104°41'11.313"W	1.02	
1058.00	11.380	50.800	1051.95	-48.43	47.27	76.10	40°07'50.407"N	104°41'11.147"W	1.42	
1193.00	13.950	53.190	1183.66	-66.96	65.44	99.46	40°07'50.587"N	104°41'10.847"W	1.94	
1283.00	15.120	54.240	1270.78	-80.60	78.80	117.67	40°07'50.719"N	104°41'10.612"W	1.33	
1373.00	16.210	58.140	1357.44	-94.40	92.29	137.86	40°07'50.852"N	104°41'10.352"W	1.68	
1463.00	16.420	59.110	1443.81	-107.89	105.45	159.45	40°07'50.982"N	104°41'10.074"W	0.38	
1553.00	17.620	55.340	1529.87	-122.51	119.73	181.57	40°07'51.123"N	104°41'09.789"W	1.81	
1643.00	18.390	54.960	1615.46	-138.76	135.63	204.40	40°07'51.280"N	104°41'09.496"W	0.87	
1733.00	19.480	54.370	1700.59	-156.02	152.52	228.22	40°07'51.447"N	104°41'09.189"W	1.23	
1806.00	19.570	55.650	1769.39	-170.31	166.51	248.21	40°07'51.585"N	104°41'08.932"W	0.60	TIE-ONTO MWD SURVEYS
1957.00	18.110	55.960	1912.30	-198.34	193.92	288.54	40°07'51.856"N	104°41'08.412"W	0.97	BEGIN MWD+IFR SURVEYS
2052.00	17.450	60.180	2002.77	-214.06	209.27	313.13	40°07'52.008"N	104°41'08.096"W	1.52	
2146.00	19.400	57.860	2091.94	-229.77	224.58	338.58	40°07'52.159"N	104°41'07.768"W	2.22	
2241.00	20.380	58.960	2181.28	-247.11	241.51	366.11	40°07'52.327"N	104°41'07.414"W	1.10	
2336.00	21.920	58.590	2269.87	-265.34	259.28	395.42	40°07'52.502"N	104°41'07.036"W	1.63	
2431.00	21.280	59.250	2358.20	-283.85	277.34	425.37	40°07'52.681"N	104°41'06.651"W	0.72	
2525.00	23.060	55.050	2445.26	-303.58	296.61	455.12	40°07'52.871"N	104°41'06.268"W	2.53	
2623.00	21.570	53.390	2535.91	-325.78	318.35	485.32	40°07'53.086"N	104°41'05.879"W	1.65	
2715.00	21.440	50.510	2621.51	-346.96	339.12	511.87	40°07'53.291"N	104°41'05.537"W	1.16	
2809.00	20.010	48.520	2709.43	-368.93	360.70	537.18	40°07'53.504"N	104°41'05.211"W	1.70	ENTERED LANDBOX
2904.00	19.590	54.880	2798.82	-389.25	380.63	562.39	40°07'53.701"N	104°41'04.887"W	2.31	
2999.00	21.000	54.520	2887.92	-408.70	399.68	589.28	40°07'53.890"N	104°41'04.540"W	1.49	
3093.00	21.350	56.320	2975.58	-428.39	418.94	617.23	40°07'54.080"N	104°41'04.181"W	0.79	
3188.00	20.280	54.810	3064.38	-447.90	438.02	645.08	40°07'54.268"N	104°41'03.822"W	1.26	
3282.00	20.240	58.560	3152.56	-466.19	455.89	672.26	40°07'54.445"N	104°41'03.472"W	1.38	
3377.00	20.420	59.520	3241.65	-483.60	472.87	700.57	40°07'54.613"N	104°41'03.108"W	0.40	
3472.00	18.310	58.180	3331.27	-500.29	489.14	727.53	40°07'54.774"N	104°41'02.760"W	2.27	
3567.00	19.170	59.340	3421.23	-516.51	504.97	753.63	40°07'54.930"N	104°41'02.424"W	0.99	
3662.00	19.150	61.480	3510.97	-532.32	520.36	780.74	40°07'55.082"N	104°41'02.075"W	0.74	
3756.00	18.700	57.670	3599.89	-548.14	535.78	807.02	40°07'55.235"N	104°41'01.737"W	1.40	
3851.00	19.290	56.430	3689.72	-565.36	552.60	832.96	40°07'55.401"N	104°41'01.403"W	0.75	
3945.00	20.560	54.330	3778.09	-583.97	570.81	859.31	40°07'55.581"N	104°41'01.064"W	1.55	
4040.00	20.480	55.250	3867.06	-603.59	590.01	886.52	40°07'55.770"N	104°41'00.714"W	0.35	
4135.00	20.310	54.350	3956.11	-623.09	609.10	913.57	40°07'55.959"N	104°41'00.365"W	0.38	

REFERENCE WELLPATH IDENTIFICATION			
Operator	KERR-MCGEE OIL & GAS ONSHORE LP (WA)	Slot	SLOT#24 SARCHET 37N-20HZ (328°FNL & 2315°FEL, SEC.20)
Area	COLORADO	Well	SARCHET 37N-20HZ
Field	WELD COUNTY (UTM/TRUE NORTH)	Wellbore	SARCHET 37N-20HZ AWP <12845>
Facility	SEC.20-T2N-R65W		

WELLPATH DATA (143 stations) † = interpolated/extrapolated station										
MD [ft]	Inclination [°]	Azimuth [°]	TVD [ft]	Vert Sect [ft]	North [ft]	East [ft]	Latitude	Longitude	DLS [°/100ft]	Comments
4230.00	21.300	56.010	4044.91	-642.77	628.35	941.27	40°07'56.149"N	104°41'00.009"W	1.21	
4323.00	22.380	55.550	4131.24	-662.66	647.81	969.88	40°07'56.342"N	104°40'59.640"W	1.18	
4418.00	21.400	54.220	4219.39	-683.47	668.18	998.86	40°07'56.543"N	104°40'59.267"W	1.16	
4513.00	17.940	52.410	4308.83	-702.93	687.24	1024.52	40°07'56.731"N	104°40'58.937"W	3.70	
4607.00	16.100	53.980	4398.71	-719.76	703.74	1046.53	40°07'56.894"N	104°40'58.653"W	2.02	
4702.00	16.510	57.380	4489.89	-735.13	718.76	1068.56	40°07'57.043"N	104°40'58.370"W	1.09	
4796.00	17.460	54.700	4579.79	-750.82	734.11	1091.32	40°07'57.194"N	104°40'58.077"W	1.31	
4891.00	19.220	54.310	4669.96	-768.56	751.47	1115.65	40°07'57.366"N	104°40'57.763"W	1.86	
4986.00	19.050	55.890	4759.71	-786.76	769.29	1141.19	40°07'57.542"N	104°40'57.435"W	0.57	
5080.00	16.880	56.320	4849.13	-803.30	785.46	1165.25	40°07'57.702"N	104°40'57.125"W	2.31	
5175.00	16.090	53.980	4940.22	-819.03	800.85	1187.37	40°07'57.854"N	104°40'56.840"W	1.09	
5269.00	14.880	49.370	5030.81	-834.86	816.37	1207.07	40°07'58.007"N	104°40'56.586"W	1.84	
5364.00	13.460	51.230	5122.92	-850.00	831.24	1224.95	40°07'58.154"N	104°40'56.356"W	1.57	
5459.00	13.750	52.760	5215.25	-864.02	844.99	1242.56	40°07'58.290"N	104°40'56.130"W	0.49	
5554.00	11.900	60.180	5307.89	-875.99	856.70	1260.05	40°07'58.406"N	104°40'55.904"W	2.60	
5648.00	10.800	63.260	5400.05	-885.03	865.48	1276.32	40°07'58.492"N	104°40'55.695"W	1.34	
5743.00	9.800	62.390	5493.51	-893.01	873.23	1291.43	40°07'58.569"N	104°40'55.500"W	1.07	
5838.00	7.130	56.350	5587.47	-900.21	880.25	1303.51	40°07'58.638"N	104°40'55.345"W	2.96	
5932.00	7.550	48.250	5680.70	-907.70	887.59	1312.97	40°07'58.711"N	104°40'55.223"W	1.19	
6027.00	6.730	56.590	5774.97	-915.06	894.82	1322.27	40°07'58.782"N	104°40'55.103"W	1.39	
6122.00	6.440	73.270	5869.35	-919.81	899.41	1332.02	40°07'58.828"N	104°40'54.978"W	2.03	
6216.00	4.860	70.760	5962.89	-922.78	902.24	1340.83	40°07'58.856"N	104°40'54.864"W	1.70	
6311.00	4.100	70.210	6057.60	-925.36	904.72	1347.83	40°07'58.880"N	104°40'54.774"W	0.80	
6406.00	2.020	83.720	6152.46	-926.77	906.05	1352.69	40°07'58.893"N	104°40'54.712"W	2.30	
6501.00	0.230	79.600	6247.44	-927.01	906.27	1354.54	40°07'58.895"N	104°40'54.688"W	1.88	
6595.00	0.390	65.660	6341.44	-927.19	906.44	1355.02	40°07'58.897"N	104°40'54.682"W	0.19	
6690.00	5.650	170.840	6436.29	-922.72	901.95	1356.06	40°07'58.853"N	104°40'54.668"W	6.07	
6785.00	12.690	171.420	6530.01	-907.80	887.00	1358.36	40°07'58.705"N	104°40'54.639"W	7.41	
6880.00	18.380	175.650	6621.51	-882.57	861.72	1361.06	40°07'58.455"N	104°40'54.604"W	6.10	
6911.00	20.150	177.020	6650.77	-872.38	851.52	1361.71	40°07'58.354"N	104°40'54.596"W	5.89	
6974.00	24.300	180.240	6709.08	-848.58	827.71	1362.22	40°07'58.119"N	104°40'54.589"W	6.86	
7036.00	32.650	182.970	6763.53	-819.05	798.19	1361.29	40°07'57.827"N	104°40'54.601"W	13.63	
7069.00	37.160	181.180	6790.59	-800.18	779.33	1360.63	40°07'57.641"N	104°40'54.609"W	14.01	
7163.00	46.880	182.540	6860.34	-737.35	716.52	1358.52	40°07'57.020"N	104°40'54.637"W	10.39	
7243.00†	54.473	184.522	6911.00	-675.58	654.80	1354.65	40°07'56.410"N	104°40'54.687"W	9.68	SSPG
7258.00	55.900	184.850	6919.57	-663.29	642.53	1353.64	40°07'56.289"N	104°40'54.699"W	9.68	
7353.00	61.970	181.140	6968.58	-582.03	561.32	1349.48	40°07'55.487"N	104°40'54.753"W	7.21	
7355.00†	62.125	181.086	6969.52	-580.26	559.56	1349.45	40°07'55.469"N	104°40'54.754"W	8.13	NBRR
7448.00	69.370	178.720	7007.69	-495.55	474.83	1349.64	40°07'54.632"N	104°40'54.751"W	8.13	
7487.00†	73.101	179.163	7020.24	-458.65	437.91	1350.32	40°07'54.267"N	104°40'54.742"W	9.63	N470_B_CK
7543.00	78.460	179.770	7033.99	-404.40	383.65	1350.82	40°07'53.731"N	104°40'54.736"W	9.63	
7637.00	89.260	181.580	7044.03	-311.08	290.34	1349.71	40°07'52.809"N	104°40'54.750"W	11.65	
7684.00†	90.246	181.399	7044.23	-264.09	243.36	1348.48	40°07'52.345"N	104°40'54.766"W	2.13	LANDING POINT
7728.00	91.170	181.230	7043.69	-220.09	199.37	1347.48	40°07'51.910"N	104°40'54.779"W	2.13	
7824.00	91.290	180.520	7041.63	-124.11	103.41	1346.01	40°07'50.962"N	104°40'54.798"W	0.75	

REFERENCE WELLPATH IDENTIFICATION

Operator	KERR-MCGEE OIL & GAS ONSHORE LP (WA)	Slot	SLOT#24 SARCHET 37N-20HZ (328°FNL & 2315°FEL, SEC.20)
Area	COLORADO	Well	SARCHET 37N-20HZ
Field	WELD COUNTY (UTM/TRUE NORTH)	Wellbore	SARCHET 37N-20HZ AWP <12845>
Facility	SEC.20-T2N-R65W		

WELLPATH DATA (143 stations)

MD [ft]	Inclination [°]	Azimuth [°]	TVD [ft]	Vert Sect [ft]	North [ft]	East [ft]	Latitude	Longitude	DLS [°/100ft]	Comments
7918.00	90.460	180.380	7040.19	-30.13	9.42	1345.27	40°07'50.033"N	104°40'54.808"W	0.90	
8013.00	90.490	180.600	7039.40	64.87	-85.57	1344.46	40°07'49.094"N	104°40'54.818"W	0.23	
8108.00	89.350	180.530	7039.54	159.86	-180.57	1343.52	40°07'48.155"N	104°40'54.830"W	1.20	
8202.00	90.000	178.600	7040.07	253.83	-274.56	1344.24	40°07'47.226"N	104°40'54.821"W	2.17	
8297.00	91.380	178.110	7038.93	348.73	-369.51	1346.96	40°07'46.288"N	104°40'54.786"W	1.54	
8392.00	91.230	178.540	7036.76	443.61	-464.44	1349.74	40°07'45.350"N	104°40'54.751"W	0.48	
8486.00	91.070	179.480	7034.87	537.54	-558.41	1351.36	40°07'44.421"N	104°40'54.730"W	1.01	
8581.00	89.290	179.520	7034.58	632.51	-653.40	1352.19	40°07'43.483"N	104°40'54.719"W	1.87	
8676.00	89.500	179.530	7035.58	727.48	-748.39	1352.98	40°07'42.544"N	104°40'54.709"W	0.22	
8771.00	90.430	180.690	7035.64	822.46	-843.39	1352.80	40°07'41.605"N	104°40'54.711"W	1.57	
8866.00	89.690	180.470	7035.54	917.46	-938.38	1351.84	40°07'40.666"N	104°40'54.724"W	0.81	
8961.00	89.810	180.440	7035.95	1012.46	-1033.38	1351.08	40°07'39.728"N	104°40'54.734"W	0.13	
9056.00	90.030	181.030	7036.09	1107.46	-1128.37	1349.86	40°07'38.789"N	104°40'54.749"W	0.66	
9150.00	89.440	181.090	7036.52	1201.46	-1222.35	1348.12	40°07'37.860"N	104°40'54.772"W	0.63	
9245.00	89.720	181.950	7037.22	1296.45	-1317.32	1345.60	40°07'36.922"N	104°40'54.804"W	0.95	
9340.00	89.840	182.450	7037.58	1391.42	-1412.25	1341.96	40°07'35.984"N	104°40'54.851"W	0.54	
9433.00	89.630	182.730	7038.01	1484.38	-1505.15	1337.75	40°07'35.066"N	104°40'54.906"W	0.38	
9528.00	89.660	181.540	7038.60	1579.35	-1600.08	1334.22	40°07'34.127"N	104°40'54.951"W	1.25	
9623.00	89.810	182.270	7039.04	1674.34	-1695.03	1331.06	40°07'33.189"N	104°40'54.992"W	0.78	
9718.00	89.720	183.150	7039.43	1769.29	-1789.92	1326.57	40°07'32.252"N	104°40'55.050"W	0.93	
9812.00	89.630	184.040	7039.96	1863.18	-1883.73	1320.67	40°07'31.324"N	104°40'55.126"W	0.95	
9907.00	89.780	183.950	7040.45	1958.04	-1978.50	1314.05	40°07'30.388"N	104°40'55.211"W	0.18	
10002.00	90.430	180.750	7040.28	2052.99	-2073.40	1310.16	40°07'29.450"N	104°40'55.261"W	3.44	
10096.00	91.630	180.320	7038.59	2146.97	-2167.38	1309.28	40°07'28.521"N	104°40'55.273"W	1.36	
10191.00	91.140	179.860	7036.29	2241.94	-2262.36	1309.13	40°07'27.583"N	104°40'55.275"W	0.71	
10286.00	91.380	179.420	7034.20	2336.89	-2357.33	1309.73	40°07'26.644"N	104°40'55.267"W	0.53	
10380.00	90.800	180.080	7032.41	2430.85	-2451.31	1310.14	40°07'25.716"N	104°40'55.262"W	0.93	
10475.00	89.660	180.870	7032.03	2525.85	-2546.31	1309.35	40°07'24.777"N	104°40'55.272"W	1.46	
10569.00	90.430	181.070	7031.96	2619.85	-2640.29	1307.76	40°07'23.848"N	104°40'55.292"W	0.85	
10664.00	89.260	180.250	7032.22	2714.84	-2735.28	1306.67	40°07'22.909"N	104°40'55.307"W	1.50	
10759.00	89.750	179.830	7033.04	2809.83	-2830.28	1306.60	40°07'21.971"N	104°40'55.308"W	0.68	
10853.00	89.320	180.640	7033.80	2903.82	-2924.27	1306.21	40°07'21.042"N	104°40'55.313"W	0.98	
10948.00	90.550	180.170	7033.91	2998.81	-3019.27	1305.54	40°07'20.103"N	104°40'55.321"W	1.39	
11043.00	88.830	181.260	7034.42	3093.81	-3114.25	1304.36	40°07'19.164"N	104°40'55.337"W	2.14	
11137.00	88.890	181.020	7036.29	3187.79	-3208.22	1302.49	40°07'18.236"N	104°40'55.361"W	0.26	
11232.00	89.170	180.760	7037.90	3282.77	-3303.19	1301.01	40°07'17.297"N	104°40'55.380"W	0.40	
11327.00	89.690	180.570	7038.84	3377.77	-3398.18	1299.91	40°07'16.358"N	104°40'55.394"W	0.58	
11421.00	89.570	179.920	7039.45	3471.76	-3492.18	1299.51	40°07'15.430"N	104°40'55.399"W	0.70	
11516.00	90.680	178.920	7039.24	3566.73	-3587.17	1300.47	40°07'14.491"N	104°40'55.387"W	1.57	
11611.00	89.600	180.100	7039.01	3661.70	-3682.16	1301.28	40°07'13.552"N	104°40'55.377"W	1.68	
11705.00	89.750	180.490	7039.55	3755.69	-3776.16	1300.80	40°07'12.623"N	104°40'55.383"W	0.44	
11800.00	90.240	179.580	7039.55	3850.68	-3871.16	1300.74	40°07'11.684"N	104°40'55.384"W	1.09	
11895.00	89.970	180.840	7039.38	3945.67	-3966.16	1300.39	40°07'10.746"N	104°40'55.388"W	1.36	
11989.00	89.510	180.670	7039.81	4039.67	-4060.15	1299.15	40°07'09.817"N	104°40'55.404"W	0.52	
12084.00	90.370	181.900	7039.91	4134.66	-4155.12	1297.02	40°07'08.878"N	104°40'55.432"W	1.58	

REFERENCE WELLPATH IDENTIFICATION

Operator	KERR-MCGEE OIL & GAS ONSHORE LP (WA)	Slot	SLOT#24 SARCHET 37N-20HZ (328°FNL & 2315°FEL, SEC.20)
Area	COLORADO	Well	SARCHET 37N-20HZ
Field	WELD COUNTY (UTM/TRUE NORTH)	Wellbore	SARCHET 37N-20HZ AWB <12845>
Facility	SEC.20-T2N-R65W		

WELLPATH DATA (143 stations)

MD [ft]	Inclination [°]	Azimuth [°]	TVD [ft]	Vert Sect [ft]	North [ft]	East [ft]	Latitude	Longitude	DLS [°/100ft]	Comments
12179.00	90.180	181.730	7039.45	4229.65	-4250.07	1294.01	40°07'07.940"N	104°40'55.470"W	0.27	
12274.00	90.920	181.870	7038.54	4324.63	-4345.02	1291.03	40°07'07.002"N	104°40'55.509"W	0.79	
12368.00	88.830	181.360	7038.74	4418.62	-4438.98	1288.38	40°07'06.073"N	104°40'55.543"W	2.29	
12463.00	88.890	180.930	7040.63	4513.60	-4533.94	1286.48	40°07'05.135"N	104°40'55.568"W	0.46	
12558.00	90.950	180.900	7040.77	4608.59	-4628.92	1284.96	40°07'04.196"N	104°40'55.587"W	2.17	
12653.00	91.450	180.640	7038.78	4703.57	-4723.89	1283.69	40°07'03.258"N	104°40'55.604"W	0.59	
12791.00	92.620	180.450	7033.88	4841.48	-4861.79	1282.38	40°07'01.895"N	104°40'55.621"W	0.86	LAST BHI MWD+IFR SURVEYS
12845.00	92.620	180.450	7031.41	4895.42	-4915.74	1281.95	40°07'01.362"N	104°40'55.626"W	0.00	PROJECTION TO BIT

HOLE & CASING SECTIONS - Ref Wellbore: SARCHET 37N-20HZ AWB <12845> Ref Wellpath: SARCHET 37N-20HZ AWP

String/Diameter	Start MD [ft]	End MD [ft]	Interval [ft]	Start TVD [ft]	End TVD [ft]	Start N/S [ft]	Start E/W [ft]	End N/S [ft]	End E/W [ft]
13.5in Open Hole	16.00	1865.00	1849.00	16.00	1825.08	0.00	0.00	177.49	264.31
9.625in Casing Surface	16.00	1855.00	1839.00	16.00	1815.63	0.00	0.00	175.65	261.61
8.5in Open Hole	1865.00	12845.00	10980.00	1825.08	7031.41	177.49	264.31	-4915.74	1281.95

TARGETS

Name	TVD [ft]	North [ft]	East [ft]	Grid East [US ft]	Grid North [US ft]	Latitude	Longitude	Shape
SARCHET 37N-20HZ LANDBOX	4930.00	0.04	-0.02	1727988.84	14574422.86	40°07'49.940"N	104°41'12.127"W	polygon
SEC.20-T2N-R65W SECTION LINES	4930.00	-88.12	-81.67	1727907.53	14574334.44	40°07'49.069"N	104°41'13.178"W	polygon
SARCHET 37N-20HZ BHL ON PLAT REV-1 (100°FSL & 1048°FEL, SEC.20)	7057.00	-4916.83	1273.11	1729278.78	14569512.43	40°07'01.351"N	104°40'55.740"W	point

WELLPATH COMPOSITION - Ref Wellbore: SARCHET 37N-20HZ AWB <12845> Ref Wellpath: SARCHET 37N-20HZ AWP

Start MD [ft]	End MD [ft]	Positional Uncertainty Model	Log Name/Comment	Wellbore
16.00	1806.00	Custom_APC_ISCWSA REV 2 MWD	SDI MWD SURVEYS 13.5" <94-1806>	SARCHET 37N-20HZ AWB <12845>
1806.00	12791.00	Custom APC_ISCWSA REV 2 MWD+IFR1+SC (approximation)	BHI MWD+IFR SURVEYS 8.5" <1957-12791>	SARCHET 37N-20HZ AWB <12845>
12791.00	12845.00	Blind Drilling (std)	Projection to bit	SARCHET 37N-20HZ AWB <12845>



Actual Wellpath Report

SARCHET 37N-20HZ AWP
Page 6 of 6



REFERENCE WELLPATH IDENTIFICATION			
Operator	KERR-MCGEE OIL & GAS ONSHORE LP (WA)	Slot	SLOT#24 SARCHET 37N-20HZ (328'FNL & 2315'FEL, SEC.20)
Area	COLORADO	Well	SARCHET 37N-20HZ
Field	WELD COUNTY (UTM/TRUE NORTH)	Wellbore	SARCHET 37N-20HZ AWB <12845>
Facility	SEC.20-T2N-R65W		

WELLPATH COMMENTS				
MD [ft]	Inclination [°]	Azimuth [°]	TVD [ft]	Comment
94.00	0.640	305.770	94.00	BEGIN MWD SURVEYS
1806.00	19.570	55.650	1769.39	TIE-ONTO MWD SURVEYS
1957.00	18.110	55.960	1912.30	BEGIN MWD+IFR SURVEYS
2809.00	20.010	48.520	2709.43	ENTERED LANDBOX
7243.00	54.473	184.522	6911.00	SSPG
7355.00	62.125	181.086	6969.52	NBRR
7487.00	73.101	179.163	7020.24	N470_B_CK
7684.00	90.246	181.399	7044.23	LANDING POINT
12791.00	92.620	180.450	7033.88	LAST BHI MWD+IFR SURVEYS
12845.00	92.620	180.450	7031.41	PROJECTION TO BIT