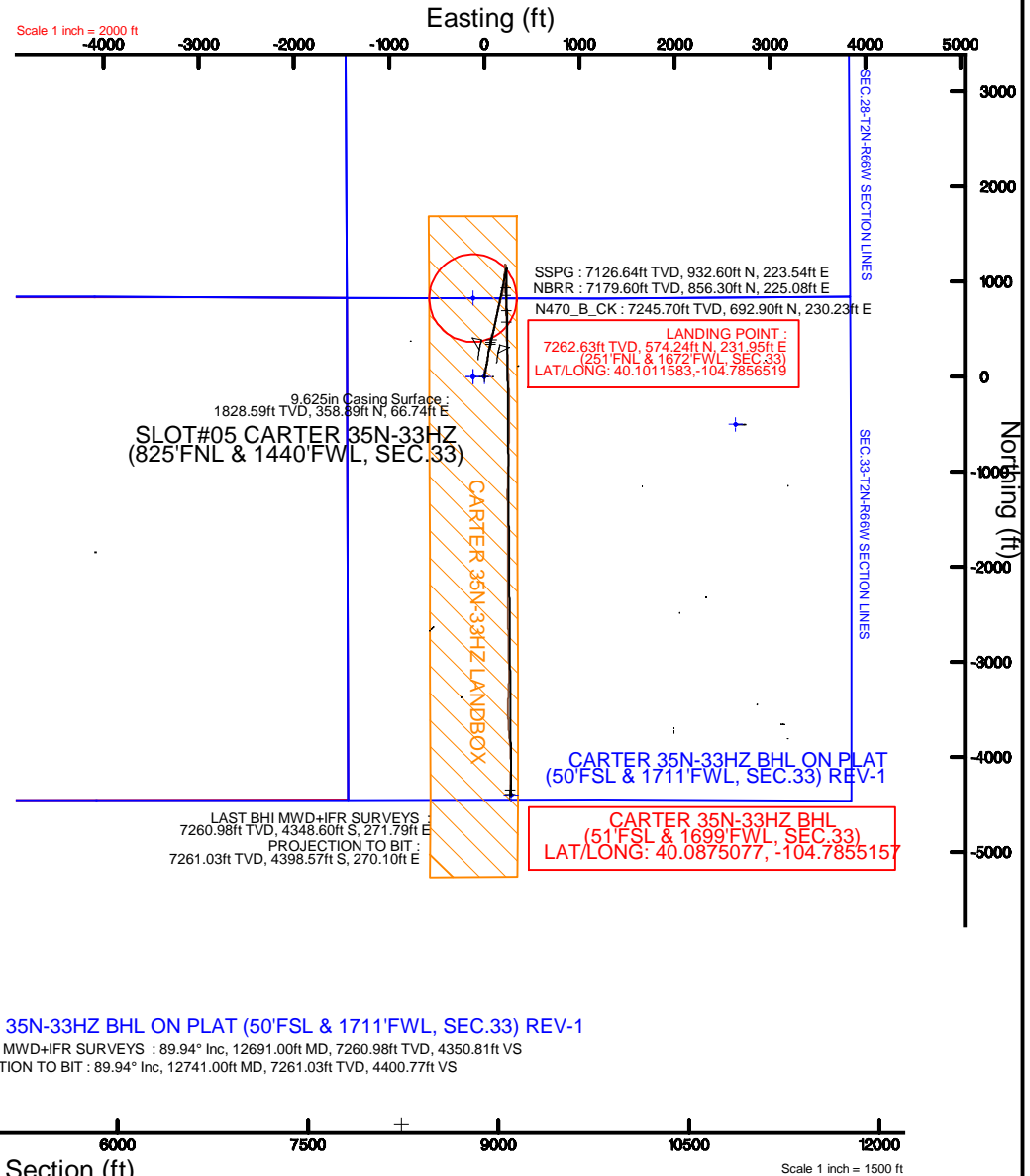
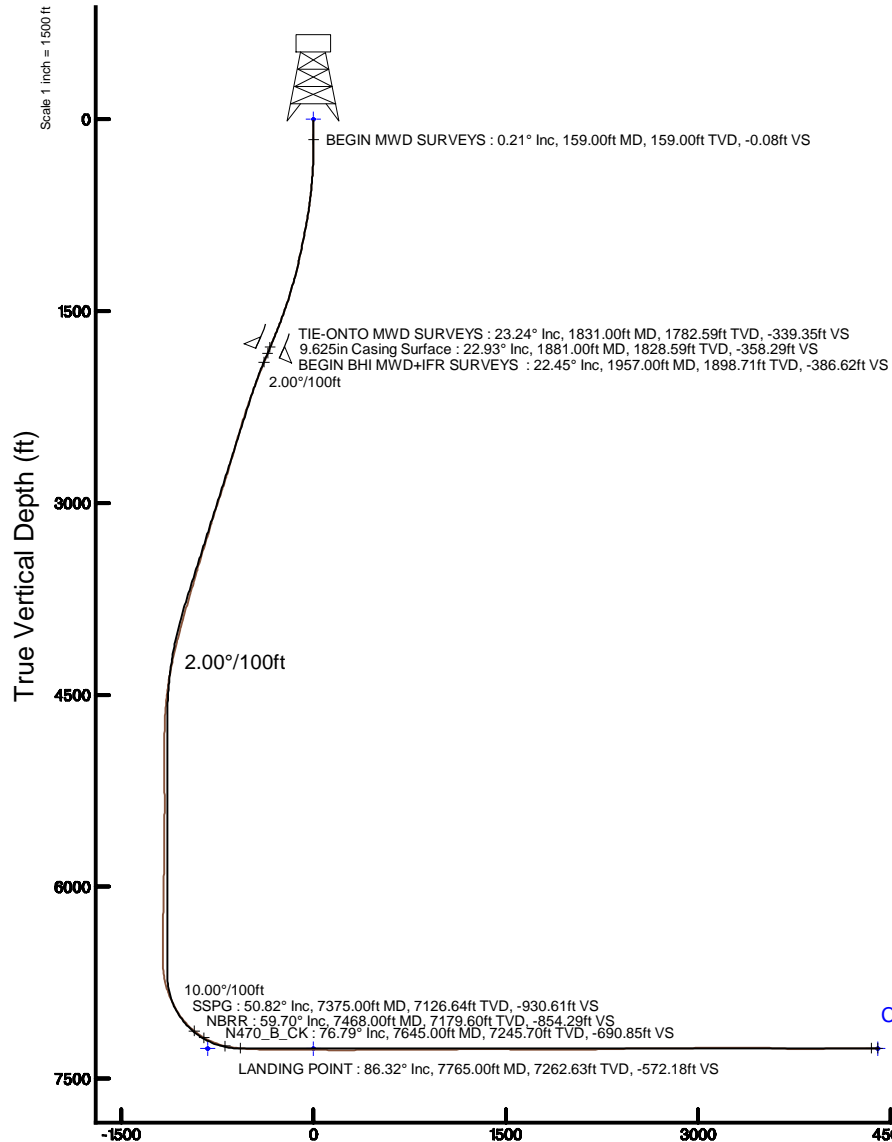


# KERR-MCGEE OIL & GAS ONSHORE LP (WA)

Location: COLORADO Slot: SLOT#05 CARTER 35N-33HZ (825'FNL & 1440'FWL, SEC.33)  
 Field: WELD COUNTY (UTM/TRUE NORTH) Well: CARTER 35N-33HZ  
 Facility: SEC.33-T2N-R66W Wellbore: CARTER 35N-33HZ PWB

Plot reference wellpath is CARTER 35N-33HZ (REV-B.0) PWP

True vertical depths are referenced to XTREME 23 (16'KB) (RKB)	Grid System: NAD83 / UTM Zone 13 North, US feet
Measured depths are referenced to XTREME 23 (16'KB) (RKB)	North Reference: True north
XTREME 23 (16'KB) (RKB) to Mean Sea Level: 4975 feet	Scale: True distance
Mean Sea Level to Mud line (At Slot: SLOT#05 CARTER 35N-33HZ (825'FNL & 1440'FWL, SEC.33)): 0 feet	Depths are in feet
Coordinates are in feet referenced to Slot	Created by: amarcar on 02/Oct/2015



Vertical Section (ft)  
 Azimuth 179.50° with reference 0.00 N, 0.00 E



# Actual Wellpath Report

CARTER 35N-33HZ AWP  
Page 1 of 6



## REFERENCE WELLPATH IDENTIFICATION

Operator	KERR-MCGEE OIL & GAS ONSHORE LP (WA)	Slot	SLOT#05 CARTER 35N-33HZ (825'FNL & 1440'FWL, SEC.33)
Area	COLORADO	Well	CARTER 35N-33HZ
Field	WELD COUNTY (UTM/TRUE NORTH)	Wellbore	CARTER 35N-33HZ AWB <12741>
Facility	SEC.33-T2N-R66W		

## REPORT SETUP INFORMATION

Projection System	NAD83 / UTM Zone 13 North, US feet	Software System	WellArchitect® 4.0.0
North Reference	True	User	Amarcar
Scale	0.999604	Report Generated	02/Oct/2015 at 12:36
Convergence at slot	0.14° East	Database/Source file	KERR MCGEE UTM/CARTER_35N-33HZ_AWB__12741_.xml

## WELLPATH LOCATION

	Local coordinates		Grid coordinates		Geographic coordinates	
	North[ft]	East[ft]	Easting[US ft]	Northing[US ft]	Latitude	Longitude
Slot Location	-373.37	775.19	1700125.94	14563067.28	40°05'58.495"N	104°47'11.332"W
Facility Reference Pt			1699350.17	14563438.66	40°06'02.185"N	104°47'21.307"W
Field Reference Pt			1698235.31	14552047.82	40°04'09.600"N	104°47'36.000"W

## WELLPATH DATUM

Calculation method	Minimum curvature	XTREME 23 (16'KB) (RKB) to Facility Vertical Datum	4975.00ft
Horizontal Reference Pt	Slot	XTREME 23 (16'KB) (RKB) to Mean Sea Level	4975.00ft
Vertical Reference Pt	XTREME 23 (16'KB) (RKB)	XTREME 23 (16'KB) (RKB) to Mud Line at Slot (SLOT#05 CARTER 35N-33HZ (825'FNL & 1440'FWL, SEC.33))	4975.00ft
MD Reference Pt	XTREME 23 (16'KB) (RKB)	Section Origin	N 0.00, E 0.00 ft
Field Vertical Reference	Mean Sea Level	Section Azimuth	179.50°

## REFERENCE WELLPATH IDENTIFICATION

Operator	KERR-MCGEE OIL & GAS ONSHORE LP (WA)	Slot	SLOT#05 CARTER 35N-33HZ (825'FNL & 1440'FWL, SEC.33)
Area	COLORADO	Well	CARTER 35N-33HZ
Field	WELD COUNTY (UTM/TRUE NORTH)	Wellbore	CARTER 35N-33HZ AWB <12741>
Facility	SEC.33-T2N-R66W		

## WELLPATH DATA (131 stations) † = interpolated/extrapolated station

MD [ft]	Inclination [°]	Azimuth [°]	TVD [ft]	Vert Sect [ft]	North [ft]	East [ft]	Latitude	Longitude	DLS [°/100ft]	Comments
0.00†	0.000	287.480	0.00	0.00	0.00	0.00	40°05'58.495"N	104°47'11.332"W	0.00	
16.00	0.000	287.480	16.00	0.00	0.00	0.00	40°05'58.495"N	104°47'11.332"W	0.00	
159.00	0.210	287.480	159.00	-0.08	0.08	-0.25	40°05'58.496"N	104°47'11.335"W	0.15	BEGIN MWD SURVEYS
250.00	0.920	337.770	249.99	-0.81	0.81	-0.69	40°05'58.503"N	104°47'11.340"W	0.88	
343.00	2.450	355.620	342.95	-3.49	3.48	-1.12	40°05'58.530"N	104°47'11.346"W	1.72	
438.00	3.830	10.650	437.81	-8.63	8.62	-0.69	40°05'58.580"N	104°47'11.340"W	1.68	
533.00	5.600	14.010	532.48	-16.23	16.24	1.02	40°05'58.656"N	104°47'11.318"W	1.88	
628.00	7.390	14.830	626.87	-26.61	26.64	3.71	40°05'58.758"N	104°47'11.284"W	1.89	
818.00	10.980	13.190	814.40	-55.98	56.08	10.97	40°05'59.049"N	104°47'11.190"W	1.89	
913.00	10.790	8.320	907.70	-73.56	73.69	14.32	40°05'59.223"N	104°47'11.147"W	0.99	
1008.00	12.030	10.530	1000.82	-92.07	92.22	17.41	40°05'59.407"N	104°47'11.108"W	1.38	
1103.00	12.880	13.050	1093.58	-112.08	112.27	21.61	40°05'59.605"N	104°47'11.053"W	1.06	
1262.00	15.480	9.740	1247.73	-150.19	150.45	29.21	40°05'59.982"N	104°47'10.956"W	1.71	
1356.00	16.410	7.970	1338.11	-175.67	175.97	33.17	40°06'00.234"N	104°47'10.905"W	1.12	
1521.00	19.680	6.600	1494.97	-226.31	226.66	39.60	40°06'00.735"N	104°47'10.822"W	2.00	
1641.00	21.540	10.630	1607.29	-267.98	268.39	45.98	40°06'01.147"N	104°47'10.740"W	1.95	
1736.00	22.980	12.350	1695.21	-303.17	303.65	53.17	40°06'01.496"N	104°47'10.647"W	1.66	
1831.00	23.240	14.540	1782.59	-339.35	339.91	61.84	40°06'01.854"N	104°47'10.536"W	0.95	TIE-ONTO MWD SURVEYS
1957.00	22.450	14.310	1898.71	-386.62	387.28	74.03	40°06'02.322"N	104°47'10.379"W	0.63	BEGIN BHI MWD+IFR SURVEYS
2052.00	21.500	13.020	1986.80	-421.08	421.82	82.43	40°06'02.664"N	104°47'10.271"W	1.12	
2147.00	20.930	12.230	2075.37	-454.56	455.37	89.95	40°06'02.995"N	104°47'10.174"W	0.67	
2242.00	20.120	12.060	2164.33	-487.06	487.93	96.96	40°06'03.317"N	104°47'10.084"W	0.85	
2337.00	19.220	10.950	2253.79	-518.34	519.26	103.34	40°06'03.627"N	104°47'10.002"W	1.03	
2432.00	17.960	10.890	2343.83	-548.02	549.00	109.08	40°06'03.920"N	104°47'09.928"W	1.33	
2527.00	16.390	10.520	2434.59	-575.54	576.56	114.29	40°06'04.193"N	104°47'09.861"W	1.66	
2623.00	16.790	15.490	2526.60	-602.16	603.24	120.47	40°06'04.457"N	104°47'09.781"W	1.54	
2718.00	16.360	12.960	2617.65	-628.36	629.50	127.13	40°06'04.716"N	104°47'09.696"W	0.88	
2813.00	17.100	10.370	2708.63	-655.09	656.28	132.65	40°06'04.981"N	104°47'09.625"W	1.11	
2909.00	17.500	12.840	2800.29	-683.00	684.24	138.40	40°06'05.257"N	104°47'09.551"W	0.87	
3004.00	18.270	13.490	2890.70	-711.35	712.64	145.05	40°06'05.538"N	104°47'09.465"W	0.84	
3099.00	19.050	13.650	2980.71	-740.83	742.19	152.18	40°06'05.830"N	104°47'09.373"W	0.82	
3194.00	18.800	14.860	3070.57	-770.62	772.05	159.76	40°06'06.125"N	104°47'09.276"W	0.49	
3289.00	16.410	17.230	3161.12	-798.17	799.67	167.66	40°06'06.398"N	104°47'09.174"W	2.63	
3385.00	17.790	17.530	3252.87	-825.03	826.61	176.10	40°06'06.664"N	104°47'09.065"W	1.44	
3480.00	17.850	13.890	3343.31	-852.94	854.58	183.97	40°06'06.940"N	104°47'08.964"W	1.17	
3575.00	17.530	10.120	3433.83	-881.10	882.80	189.98	40°06'07.219"N	104°47'08.887"W	1.25	
3670.00	16.180	11.710	3524.74	-908.10	909.85	195.18	40°06'07.486"N	104°47'08.820"W	1.50	
3765.00	16.240	6.010	3615.97	-934.24	936.02	199.25	40°06'07.745"N	104°47'08.767"W	1.68	
3861.00	16.620	8.880	3708.05	-961.12	962.93	202.78	40°06'08.011"N	104°47'08.722"W	0.93	
3956.00	16.790	5.620	3799.05	-988.17	990.01	206.22	40°06'08.279"N	104°47'08.678"W	1.00	
4051.00	16.050	2.420	3890.17	-1014.93	1016.79	208.12	40°06'08.543"N	104°47'08.653"W	1.23	
4146.00	14.880	0.530	3981.73	-1040.24	1042.11	208.78	40°06'08.793"N	104°47'08.645"W	1.34	
4241.00	13.750	4.720	4073.78	-1063.68	1065.56	209.83	40°06'09.025"N	104°47'08.631"W	1.61	
4336.00	13.240	15.320	4166.17	-1085.39	1087.31	213.63	40°06'09.240"N	104°47'08.582"W	2.65	
4432.00	12.060	13.720	4259.84	-1105.69	1107.65	218.91	40°06'09.441"N	104°47'08.514"W	1.28	

## REFERENCE WELLPATH IDENTIFICATION

Operator	KERR-MCGEE OIL & GAS ONSHORE LP (WA)	Slot	SLOT#05 CARTER 35N-33HZ (825'FNL & 1440'FWL, SEC.33)
Area	COLORADO	Well	CARTER 35N-33HZ
Field	WELD COUNTY (UTM/TRUE NORTH)	Wellbore	CARTER 35N-33HZ AWP <12741>
Facility	SEC.33-T2N-R66W		

## WELLPATH DATA (131 stations) † = interpolated/extrapolated station

MD [ft]	Inclination [°]	Azimuth [°]	TVD [ft]	Vert Sect [ft]	North [ft]	East [ft]	Latitude	Longitude	DLS [°/100ft]	Comments
4527.00	9.980	10.610	4353.09	-1123.39	1125.39	222.78	40°06'09.616"N	104°47'08.465"W	2.28	
4622.00	7.290	6.420	4447.00	-1137.46	1139.47	224.97	40°06'09.756"N	104°47'08.436"W	2.91	
4717.00	6.130	2.160	4541.35	-1148.51	1150.53	225.84	40°06'09.865"N	104°47'08.425"W	1.33	
4812.00	3.830	8.150	4635.99	-1156.71	1158.74	226.48	40°06'09.946"N	104°47'08.417"W	2.48	
4908.00	2.120	27.150	4731.86	-1161.46	1163.50	227.75	40°06'09.993"N	104°47'08.401"W	2.03	
5003.00	0.370	320.320	4826.83	-1163.25	1165.30	228.35	40°06'10.011"N	104°47'08.393"W	2.11	
5193.00	1.030	273.840	5016.82	-1163.86	1165.88	226.26	40°06'10.017"N	104°47'08.420"W	0.43	
5288.00	1.410	273.980	5111.80	-1164.01	1166.02	224.24	40°06'10.018"N	104°47'08.446"W	0.40	
5384.00	0.730	199.290	5207.78	-1163.53	1165.53	222.86	40°06'10.013"N	104°47'08.464"W	1.46	
5479.00	1.100	237.630	5302.77	-1162.48	1164.47	221.89	40°06'10.003"N	104°47'08.476"W	0.73	
5574.00	0.770	30.810	5397.77	-1162.54	1164.53	221.44	40°06'10.003"N	104°47'08.482"W	1.92	
5765.00	0.750	23.400	5588.75	-1164.78	1166.78	222.60	40°06'10.025"N	104°47'08.467"W	0.05	
6051.00	0.440	17.070	5874.73	-1167.54	1169.54	223.66	40°06'10.053"N	104°47'08.453"W	0.11	
6147.00	1.130	11.650	5970.72	-1168.82	1170.82	223.96	40°06'10.065"N	104°47'08.449"W	0.72	
6242.00	1.230	346.830	6065.70	-1170.73	1172.73	223.92	40°06'10.084"N	104°47'08.450"W	0.54	
6337.00	0.890	321.420	6160.69	-1172.30	1174.30	223.23	40°06'10.100"N	104°47'08.459"W	0.60	
6624.00	1.230	320.300	6447.64	-1176.44	1178.41	219.87	40°06'10.140"N	104°47'08.502"W	0.12	
6719.00	1.070	134.650	6542.63	-1176.60	1178.58	219.85	40°06'10.142"N	104°47'08.502"W	2.42	
6814.00	2.730	158.660	6637.58	-1173.86	1175.85	221.30	40°06'10.115"N	104°47'08.484"W	1.90	
6909.00	12.190	178.650	6731.68	-1161.69	1163.68	222.37	40°06'09.995"N	104°47'08.470"W	10.18	
7005.00	20.310	181.080	6823.76	-1134.86	1136.85	222.29	40°06'09.730"N	104°47'08.471"W	8.49	
7100.00	25.620	178.900	6911.21	-1097.81	1099.80	222.37	40°06'09.364"N	104°47'08.470"W	5.66	
7195.00	33.380	180.400	6993.83	-1051.07	1053.06	222.59	40°06'08.902"N	104°47'08.467"W	8.20	
7290.00	42.810	178.760	7068.51	-992.53	994.52	223.10	40°06'08.323"N	104°47'08.461"W	9.98	
7375.00†	50.817	180.330	7126.64	-930.61	932.60	223.54	40°06'07.711"N	104°47'08.455"W	9.51	SSPG
7385.00	51.760	180.490	7132.89	-922.80	924.80	223.48	40°06'07.634"N	104°47'08.456"W	9.51	
7468.00†	59.699	177.011	7179.60	-854.29	856.30	225.08	40°06'06.957"N	104°47'08.435"W	10.17	NBRR
7481.00	60.950	176.520	7186.04	-843.01	845.02	225.71	40°06'06.846"N	104°47'08.427"W	10.17	
7576.00	69.580	178.920	7225.75	-756.86	758.89	229.08	40°06'05.995"N	104°47'08.384"W	9.37	
7645.00†	76.792	179.089	7245.70	-690.85	692.90	230.23	40°06'05.342"N	104°47'08.369"W	10.46	N470_B_CK
7671.00	79.510	179.150	7251.04	-665.41	667.46	230.62	40°06'05.091"N	104°47'08.364"W	10.46	
7765.00†	86.318	179.209	7262.63	-572.18	574.24	231.95	40°06'04.170"N	104°47'08.347"W	7.24	LANDING POINT
7766.00	86.390	179.210	7262.69	-571.19	573.24	231.96	40°06'04.160"N	104°47'08.347"W	7.24	
7862.00	86.540	178.490	7268.61	-475.37	477.44	233.89	40°06'03.213"N	104°47'08.322"W	0.76	
7957.00	88.980	177.650	7272.32	-380.49	382.58	237.08	40°06'02.276"N	104°47'08.281"W	2.72	
8053.00	89.040	177.430	7273.98	-284.56	286.68	241.20	40°06'01.328"N	104°47'08.228"W	0.24	
8148.00	89.260	176.880	7275.39	-189.65	191.81	245.92	40°06'00.391"N	104°47'08.167"W	0.62	
8243.00	90.590	178.850	7275.51	-94.69	96.88	249.46	40°05'59.453"N	104°47'08.121"W	2.50	
8338.00	90.090	178.070	7274.95	0.29	1.92	252.01	40°05'58.514"N	104°47'08.089"W	0.98	
8434.00	89.230	177.270	7275.52	96.24	-94.00	255.91	40°05'57.566"N	104°47'08.038"W	1.22	
8529.00	89.230	178.210	7276.80	191.18	-188.92	259.66	40°05'56.628"N	104°47'07.990"W	0.99	
8624.00	90.950	179.930	7276.65	286.17	-283.90	261.20	40°05'55.690"N	104°47'07.970"W	2.56	
8719.00	91.320	179.930	7274.77	381.15	-378.88	261.32	40°05'54.751"N	104°47'07.969"W	0.39	
8814.00	90.430	180.570	7273.32	476.13	-473.86	260.90	40°05'53.812"N	104°47'07.974"W	1.15	
8909.00	91.390	180.330	7271.81	571.11	-568.85	260.16	40°05'52.874"N	104°47'07.984"W	1.04	



# Actual Wellpath Report

CARTER 35N-33HZ AWP  
Page 4 of 6



## REFERENCE WELLPATH IDENTIFICATION

Operator	KERR-MCGEE OIL & GAS ONSHORE LP (WA)	Slot	SLOT#05 CARTER 35N-33HZ (825'FNL & 1440'FWL, SEC.33)
Area	COLORADO	Well	CARTER 35N-33HZ
Field	WELD COUNTY (UTM/TRUE NORTH)	Wellbore	CARTER 35N-33HZ AWP <12741>
Facility	SEC.33-T2N-R66W		

## WELLPATH DATA (131 stations)

MD [ft]	Inclination [°]	Azimuth [°]	TVD [ft]	Vert Sect [ft]	North [ft]	East [ft]	Latitude	Longitude	DLS [°/100ft]	Comments
9005.00	88.860	181.390	7271.60	667.07	-664.83	258.72	40°05'51.925"N	104°47'08.002"W	2.86	
9100.00	89.170	181.600	7273.23	762.00	-759.78	256.24	40°05'50.987"N	104°47'08.034"W	0.39	
9196.00	90.310	181.850	7273.67	857.92	-855.74	253.35	40°05'50.039"N	104°47'08.072"W	1.22	
9291.00	90.830	181.320	7272.72	952.85	-950.69	250.72	40°05'49.100"N	104°47'08.105"W	0.78	
9386.00	90.310	181.750	7271.78	1047.79	-1045.65	248.18	40°05'48.162"N	104°47'08.138"W	0.71	
9481.00	91.630	181.720	7270.17	1142.70	-1140.59	245.30	40°05'47.224"N	104°47'08.175"W	1.39	
9576.00	90.030	180.010	7268.79	1237.66	-1235.57	243.87	40°05'46.285"N	104°47'08.194"W	2.46	
9671.00	89.510	179.080	7269.17	1332.65	-1330.56	244.62	40°05'45.346"N	104°47'08.184"W	1.12	
9767.00	89.540	179.270	7269.97	1428.65	-1426.55	246.00	40°05'44.398"N	104°47'08.166"W	0.20	
9862.00	89.510	179.650	7270.76	1523.65	-1521.54	246.90	40°05'43.459"N	104°47'08.155"W	0.40	
9957.00	89.080	180.070	7271.92	1618.64	-1616.53	247.13	40°05'42.520"N	104°47'08.152"W	0.63	
10053.00	88.770	180.060	7273.73	1714.61	-1712.52	247.02	40°05'41.572"N	104°47'08.153"W	0.32	
10148.00	89.540	179.290	7275.13	1809.60	-1807.50	247.56	40°05'40.633"N	104°47'08.146"W	1.15	
10243.00	90.400	180.310	7275.18	1904.60	-1902.50	247.89	40°05'39.694"N	104°47'08.142"W	1.40	
10338.00	90.460	180.340	7274.46	1999.59	-1997.50	247.35	40°05'38.756"N	104°47'08.149"W	0.07	
10433.00	90.830	179.930	7273.39	2094.57	-2092.49	247.13	40°05'37.817"N	104°47'08.152"W	0.58	
10528.00	91.910	179.880	7271.12	2189.54	-2187.46	247.29	40°05'36.878"N	104°47'08.150"W	1.14	
10624.00	91.760	178.750	7268.05	2285.49	-2283.40	248.43	40°05'35.930"N	104°47'08.135"W	1.19	
10719.00	90.370	180.130	7266.28	2380.47	-2378.38	249.36	40°05'34.992"N	104°47'08.123"W	2.06	
10814.00	91.050	180.310	7265.11	2475.46	-2473.37	249.00	40°05'34.053"N	104°47'08.128"W	0.74	
10909.00	89.540	179.200	7264.62	2570.45	-2568.36	249.40	40°05'33.114"N	104°47'08.123"W	1.97	
11004.00	89.970	178.950	7265.02	2665.45	-2663.35	250.94	40°05'32.176"N	104°47'08.103"W	0.52	
11100.00	90.830	178.880	7264.35	2761.44	-2759.33	252.76	40°05'31.227"N	104°47'08.079"W	0.90	
11195.00	91.350	178.670	7262.55	2856.41	-2854.29	254.79	40°05'30.289"N	104°47'08.053"W	0.59	
11291.00	90.680	179.140	7260.85	2952.39	-2950.26	256.62	40°05'29.340"N	104°47'08.030"W	0.85	
11386.00	91.050	179.020	7259.41	3047.38	-3045.23	258.15	40°05'28.402"N	104°47'08.010"W	0.41	
11481.00	90.890	180.080	7257.80	3142.36	-3140.21	258.89	40°05'27.463"N	104°47'08.001"W	1.13	
11575.00	90.220	181.830	7256.89	3236.32	-3234.19	257.32	40°05'26.534"N	104°47'08.021"W	1.99	
11670.00	90.250	182.670	7256.50	3331.21	-3329.12	253.59	40°05'25.596"N	104°47'08.069"W	0.88	
11765.00	89.570	182.660	7256.65	3426.07	-3424.01	249.18	40°05'24.659"N	104°47'08.126"W	0.72	
11860.00	87.590	178.420	7259.01	3521.00	-3518.95	248.28	40°05'23.720"N	104°47'08.137"W	4.92	
11955.00	87.380	178.020	7263.18	3615.88	-3613.82	251.23	40°05'22.783"N	104°47'08.099"W	0.48	
12050.00	88.210	176.250	7266.83	3710.72	-3708.62	255.97	40°05'21.846"N	104°47'08.038"W	2.06	
12146.00	89.140	174.800	7269.05	3806.46	-3804.30	263.46	40°05'20.900"N	104°47'07.942"W	1.79	
12241.00	91.390	175.840	7268.61	3901.20	-3898.98	271.21	40°05'19.965"N	104°47'07.842"W	2.61	
12336.00	92.470	177.890	7265.41	3996.04	-3993.77	276.41	40°05'19.028"N	104°47'07.775"W	2.44	
12431.00	91.020	179.800	7262.52	4090.99	-4088.70	278.32	40°05'18.090"N	104°47'07.751"W	2.52	
12526.00	90.520	181.820	7261.24	4185.95	-4183.68	276.98	40°05'17.151"N	104°47'07.768"W	2.19	
12621.00	89.910	181.730	7260.89	4280.87	-4278.63	274.03	40°05'16.213"N	104°47'07.806"W	0.65	
12691.00	89.940	181.940	7260.98	4350.81	-4348.60	271.79	40°05'15.522"N	104°47'07.835"W	0.30	LAST BHI MWD+IFR SURVEYS
12741.00	89.940	181.940	7261.03	4400.77	-4398.57	270.10	40°05'15.028"N	104°47'07.856"W	0.00	PROJECTION TO BIT

## REFERENCE WELLPATH IDENTIFICATION

Operator	KERR-MCGEE OIL & GAS ONSHORE LP (WA)	Slot	SLOT#05 CARTER 35N-33HZ (825'FNL & 1440'FWL, SEC.33)
Area	COLORADO	Well	CARTER 35N-33HZ
Field	WELD COUNTY (UTM/TRUE NORTH)	Wellbore	CARTER 35N-33HZ AWB <12741>
Facility	SEC.33-T2N-R66W		

## HOLE & CASING SECTIONS - Ref Wellbore: CARTER 35N-33HZ AWB <12741> Ref Wellpath: CARTER 35N-33HZ AWP

String/Diameter	Start MD [ft]	End MD [ft]	Interval [ft]	Start TVD [ft]	End TVD [ft]	Start N/S [ft]	Start E/W [ft]	End N/S [ft]	End E/W [ft]
13.5in Open Hole	16.00	1891.00	1875.00	16.00	1837.80	0.00	0.00	362.65	67.72
9.625in Casing Surface	16.00	1881.00	1865.00	16.00	1828.59	0.00	0.00	358.89	66.74
7.875in Open Hole	1891.00	12741.00	10850.00	1837.80	7261.03	362.65	67.72	-4398.57	270.10

## TARGETS

Name	TVD [ft]	North [ft]	East [ft]	Grid East [US ft]	Grid North [US ft]	Latitude	Longitude	Shape
SEC.32-T2N-R66W SECTION LINES	0.00	0.36	-119.74	1700006.25	14563067.36	40°05'58.499"N	104°47'12.872"W	polygon
SEC.28-T2N-R66W SECTION LINES	4975.00	-503.41	2639.60	1702765.69	14562570.40	40°05'53.519"N	104°46'37.365"W	polygon
SEC.33-T2N-R66W SECTION LINES	4975.00	0.36	-119.74	1700006.25	14563067.36	40°05'58.499"N	104°47'12.872"W	polygon
CARTER 35N-33HZ ARC	7265.00	825.33	-118.83	1700005.18	14563891.99	40°06'06.651"N	104°47'12.861"W	circle
CARTER 35N-33HZ BHL ON PLAT (50'FSL & 1711'FWL, SEC.33) REV-1	7265.00	-4399.16	282.34	1700418.72	14558670.56	40°05'15.022"N	104°47'07.699"W	point
CARTER 35N-33HZ LANDBOX	7265.00	0.00	0.00	1700125.94	14563067.28	40°05'58.495"N	104°47'11.332"W	polygon
SEC.29-T2N-R66W SECTION LINES	7524.00	5793.95	-3801.11	1696312.45	14568849.79	40°06'55.749"N	104°48'00.257"W	polygon

## WELLPATH COMPOSITION - Ref Wellbore: CARTER 35N-33HZ AWB <12741> Ref Wellpath: CARTER 35N-33HZ AWP

Start MD [ft]	End MD [ft]	Positional Uncertainty Model	Log Name/Comment	Wellbore
16.00	1831.00	Custom_APC_ISCWSA REV 2 MWD	SCIENTIFIC DRILLING MWD SURVEYS <159-1831>	CARTER 35N-33HZ AWB <12741>
1831.00	12691.00	Custom APC_ISCWSA REV 2 MWD+IFR1+SC (approximation)	BHI MWD+IFR SURVEYS 7.875" <1957-12691>	CARTER 35N-33HZ AWB <12741>
12691.00	12741.00	Blind Drilling (std)	Projection to bit	CARTER 35N-33HZ AWB <12741>



# Actual Wellpath Report

CARTER 35N-33HZ AWP  
Page 6 of 6



## REFERENCE WELLPATH IDENTIFICATION

Operator	KERR-MCGEE OIL & GAS ONSHORE LP (WA)	Slot	SLOT#05 CARTER 35N-33HZ (825'FNL & 1440'FWL, SEC.33)
Area	COLORADO	Well	CARTER 35N-33HZ
Field	WELD COUNTY (UTM/TRUE NORTH)	Wellbore	CARTER 35N-33HZ AWP <12741>
Facility	SEC.33-T2N-R66W		

## WELLPATH COMMENTS

MD [ft]	Inclination [°]	Azimuth [°]	TVD [ft]	Comment
159.00	0.210	287.480	159.00	BEGIN MWD SURVEYS
1831.00	23.240	14.540	1782.59	TIE-ONTO MWD SURVEYS
1957.00	22.450	14.310	1898.71	BEGIN BHI MWD+IFR SURVEYS
7375.00	50.817	180.330	7126.64	SSPG
7468.00	59.699	177.011	7179.60	NBRR
7645.00	76.792	179.089	7245.70	N470_B_CK
7765.00	86.318	179.209	7262.63	LANDING POINT
12691.00	89.940	181.940	7260.98	LAST BHI MWD+IFR SURVEYS
12741.00	89.940	181.940	7261.03	PROJECTION TO BIT