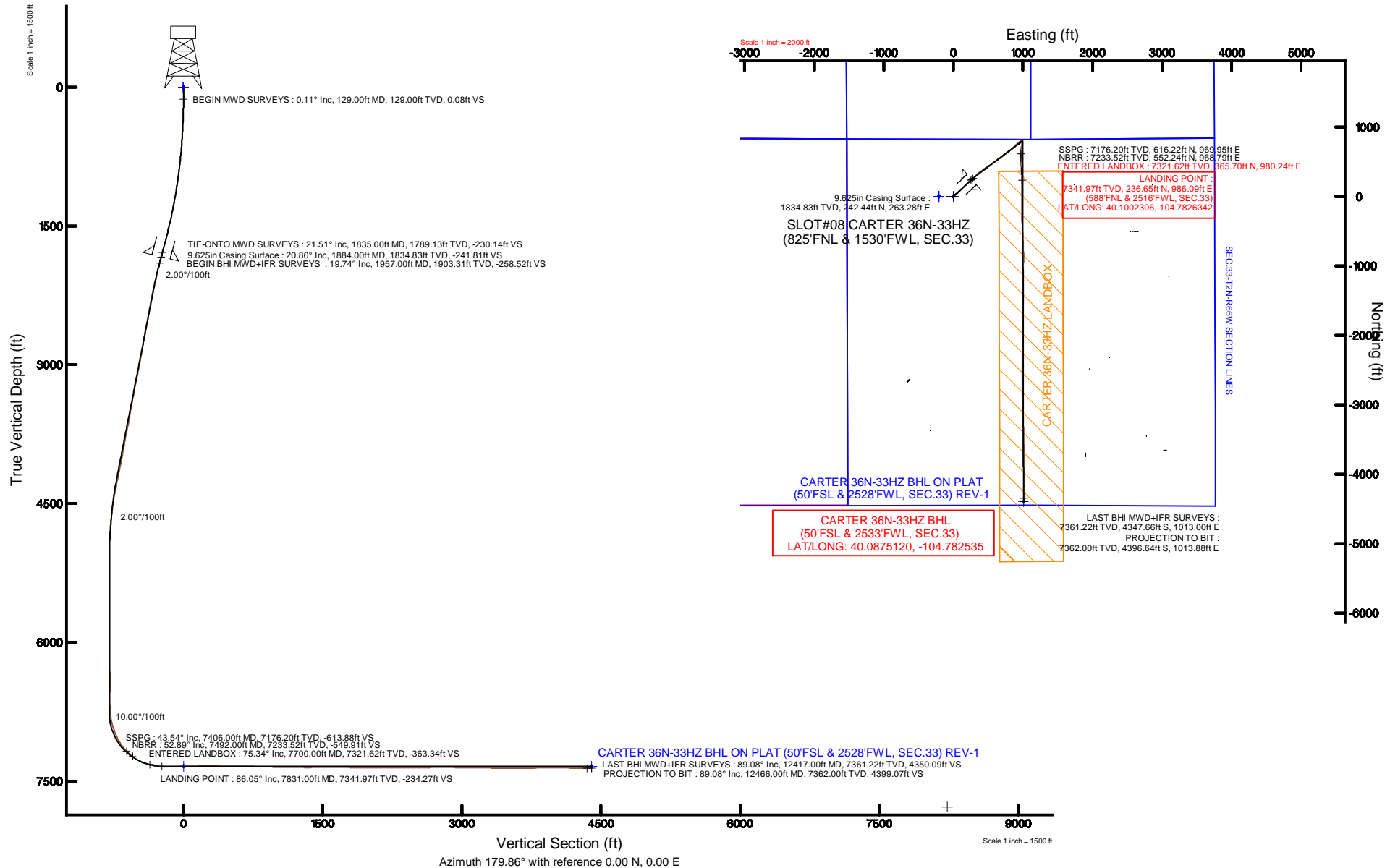


KERR-MCGEE OIL & GAS ONSHORE LP (WA)

Location: COLORADO Slot: SLOT#08 CARTER 36N-33HZ (825'FNL & 1530'FWL, SEC.33)
 Field: WELD COUNTY (UTM/TRUE NORTH) Well: CARTER 36N-33HZ
 Facility: SEC.33-T2N-R66W Wellbore: CARTER 36N-33HZ PWB

Plot reference wellpath is CARTER 36N-33HZ (REV-B.0) PWB

True vertical depths are referenced to XTREME 23 (16'KB) (RKB)	Grid System: NAD83 / UTM Zone 13 North, US feet
Measured depths are referenced to XTREME 23 (16'KB) (RKB)	North Reference: True north
XTREME 23 (16'KB) (RKB) to Mean Sea Level: 4975 feet	Scale: True distance
Mean Sea Level to Mud line (At Slot: SLOT#08 CARTER 36N-33HZ (825'FNL & 1530'FWL, SEC.33)): 0 feet	Depths are in feet
Coordinates are in feet referenced to Slot	Created by: amarcar on 24/Sep/2015





Actual Wellpath Report

CARTER 36N-33HZ AWP

Page 1 of 6



REFERENCE WELLPATH IDENTIFICATION

Operator	KERR-MCGEE OIL & GAS ONSHORE LP (WA)	Slot	SLOT#08 CARTER 36N-33HZ (825'FNL & 1530'FWL, SEC.33)
Area	COLORADO	Well	CARTER 36N-33HZ
Field	WELD COUNTY (UTM/TRUE NORTH)	Wellbore	CARTER 36N-33HZ AWB <12466>
Facility	SEC.33-T2N-R66W		

REPORT SETUP INFORMATION

Projection System	NAD83 / UTM Zone 13 North, US feet	Software System	WellArchitect® 4.0.0
North Reference	True	User	Amarcar
Scale	0.999604	Report Generated	24/Sep/2015 at 14:30
Convergence at slot	0.14° East	Database/Source file	KERR MCGEE UTM/CARTER_36N-33HZ_AWB__12466_.xml

WELLPATH LOCATION

	Local coordinates		Grid coordinates		Geographic coordinates	
	North[ft]	East[ft]	Easting[US ft]	Northing[US ft]	Latitude	Longitude
Slot Location	-373.73	865.27	1700215.98	14563067.13	40°05'58.492"N	104°47'10.172"W
Facility Reference Pt			1699350.17	14563438.66	40°06'02.185"N	104°47'21.307"W
Field Reference Pt			1698235.31	14552047.82	40°04'09.600"N	104°47'36.000"W

WELLPATH DATUM

Calculation method	Minimum curvature	XTREME 23 (16'KB) (RKB) to Facility Vertical Datum	4975.00ft
Horizontal Reference Pt	Slot	XTREME 23 (16'KB) (RKB) to Mean Sea Level	4975.00ft
Vertical Reference Pt	XTREME 23 (16'KB) (RKB)	XTREME 23 (16'KB) (RKB) to Mud Line at Slot (SLOT#08 CARTER 36N-33HZ (825'FNL & 1530'FWL, SEC.33))	4975.00ft
MD Reference Pt	XTREME 23 (16'KB) (RKB)	Section Origin	N 0.00, E 0.00 ft
Field Vertical Reference	Mean Sea Level	Section Azimuth	179.86°

Actual Wellpath Report

CARTER 36N-33HZ AWP

Page 2 of 6

REFERENCE WELLPATH IDENTIFICATION

Operator	KERR-MCGEE OIL & GAS ONSHORE LP (WA)	Slot	SLOT#08 CARTER 36N-33HZ (825'FNL & 1530'FWL, SEC.33)
Area	COLORADO	Well	CARTER 36N-33HZ
Field	WELD COUNTY (UTM/TRUE NORTH)	Wellbore	CARTER 36N-33HZ AWP <12466>
Facility	SEC.33-T2N-R66W		

WELLPATH DATA (134 stations) † = interpolated/extrapolated station

MD [ft]	Inclination [°]	Azimuth [°]	TVD [ft]	Vert Sect [ft]	North [ft]	East [ft]	Latitude	Longitude	DLS [°/100ft]	Comments
0.00†	0.000	134.080	0.00	0.00	0.00	0.00	40°05'58.492"N	104°47'10.172"W	0.00	
16.00	0.000	134.080	16.00	0.00	0.00	0.00	40°05'58.492"N	104°47'10.172"W	0.00	
129.00	0.110	134.080	129.00	0.08	-0.08	0.08	40°05'58.491"N	104°47'10.171"W	0.10	BEGIN MWD SURVEYS
219.00	1.530	24.080	218.99	-0.96	0.96	0.63	40°05'58.501"N	104°47'10.164"W	1.75	
310.00	2.760	48.750	309.93	-3.51	3.52	2.77	40°05'58.526"N	104°47'10.137"W	1.66	
438.00	4.010	45.270	437.70	-8.68	8.70	8.27	40°05'58.578"N	104°47'10.066"W	0.99	
533.00	5.160	44.760	532.39	-14.04	14.07	13.64	40°05'58.631"N	104°47'09.997"W	1.21	
628.00	6.620	51.500	626.89	-20.46	20.51	20.93	40°05'58.694"N	104°47'09.903"W	1.70	
724.00	8.520	52.490	722.05	-28.21	28.29	30.91	40°05'58.771"N	104°47'09.775"W	1.98	
881.00	11.440	50.770	876.66	-45.09	45.22	52.20	40°05'58.938"N	104°47'09.501"W	1.87	
977.00	10.990	47.530	970.83	-57.26	57.42	66.32	40°05'59.059"N	104°47'09.319"W	0.81	
1072.00	12.450	44.400	1063.84	-70.66	70.85	80.17	40°05'59.192"N	104°47'09.141"W	1.68	
1167.00	14.060	46.270	1156.31	-85.91	86.14	95.67	40°05'59.343"N	104°47'08.941"W	1.75	
1262.00	14.640	47.430	1248.35	-101.97	102.24	112.85	40°05'59.502"N	104°47'08.720"W	0.68	
1356.00	16.450	48.540	1338.90	-118.78	119.09	131.57	40°05'59.668"N	104°47'08.479"W	1.95	
1451.00	17.780	45.970	1429.70	-137.71	138.08	152.08	40°05'59.856"N	104°47'08.215"W	1.61	
1546.00	19.430	45.070	1519.73	-158.90	159.32	173.70	40°06'00.066"N	104°47'07.937"W	1.76	
1642.00	21.050	46.370	1609.80	-182.02	182.50	197.49	40°06'00.295"N	104°47'07.631"W	1.75	
1737.00	22.100	47.370	1698.14	-205.84	206.37	222.98	40°06'00.531"N	104°47'07.303"W	1.17	
1835.00	21.510	48.600	1789.13	-230.14	230.74	250.03	40°06'00.772"N	104°47'06.955"W	0.76	TIE-ONTO MWD SURVEYS
1957.00	19.740	48.430	1903.31	-258.52	259.21	282.22	40°06'01.053"N	104°47'06.541"W	1.45	BEGIN BHI MWD+IFR SURVEYS
2052.00	17.750	45.400	1993.26	-279.29	280.02	304.54	40°06'01.259"N	104°47'06.253"W	2.33	
2147.00	18.630	44.970	2083.52	-300.14	300.92	325.57	40°06'01.465"N	104°47'05.983"W	0.94	
2242.00	18.420	46.220	2173.59	-321.21	322.04	347.13	40°06'01.674"N	104°47'05.705"W	0.47	
2337.00	17.800	51.440	2263.89	-340.59	341.48	369.32	40°06'01.866"N	104°47'05.420"W	1.83	
2432.00	18.220	55.200	2354.24	-358.06	359.01	392.88	40°06'02.039"N	104°47'05.117"W	1.30	
2527.00	16.420	53.050	2444.93	-374.56	375.56	415.80	40°06'02.203"N	104°47'04.822"W	2.01	
2623.00	18.170	54.740	2536.59	-391.30	392.36	438.87	40°06'02.369"N	104°47'04.525"W	1.90	
2718.00	18.460	55.020	2626.78	-408.41	409.53	463.29	40°06'02.539"N	104°47'04.211"W	0.32	
2813.00	17.400	56.130	2717.16	-424.90	426.07	487.41	40°06'02.702"N	104°47'03.900"W	1.17	
2909.00	18.000	58.380	2808.62	-440.61	441.85	511.96	40°06'02.858"N	104°47'03.584"W	0.95	
3004.00	18.680	57.590	2898.79	-456.40	457.70	537.30	40°06'03.015"N	104°47'03.258"W	0.76	
3099.00	19.390	54.930	2988.60	-473.55	474.91	563.05	40°06'03.185"N	104°47'02.927"W	1.18	
3194.00	18.870	55.310	3078.35	-491.30	492.72	588.59	40°06'03.361"N	104°47'02.598"W	0.56	
3290.00	18.830	52.600	3169.20	-509.48	510.96	613.66	40°06'03.541"N	104°47'02.275"W	0.91	
3385.00	17.950	53.170	3259.35	-527.51	529.05	637.56	40°06'03.720"N	104°47'01.968"W	0.95	
3481.00	16.710	52.310	3350.99	-544.76	546.36	660.32	40°06'03.891"N	104°47'01.675"W	1.32	
3576.00	16.360	53.240	3442.06	-561.07	562.71	681.85	40°06'04.052"N	104°47'01.398"W	0.46	
3670.00	15.730	52.250	3532.40	-576.74	578.44	702.53	40°06'04.208"N	104°47'01.132"W	0.73	
3766.00	16.640	52.010	3624.60	-593.12	594.86	723.65	40°06'04.370"N	104°47'00.860"W	0.95	
3861.00	18.000	49.160	3715.29	-611.04	612.84	745.48	40°06'04.548"N	104°47'00.579"W	1.69	
3956.00	17.420	51.880	3805.79	-629.36	631.21	767.77	40°06'04.729"N	104°47'00.292"W	1.06	
4051.00	17.280	57.650	3896.47	-645.64	647.54	790.88	40°06'04.891"N	104°46'59.995"W	1.82	
4147.00	17.470	53.240	3988.09	-661.83	663.80	814.47	40°06'05.051"N	104°46'59.691"W	1.39	
4242.00	17.140	49.660	4078.80	-679.38	681.39	836.57	40°06'05.225"N	104°46'59.407"W	1.17	

REFERENCE WELLPATH IDENTIFICATION

Operator	KERR-MCGEE OIL & GAS ONSHORE LP (WA)	Slot	SLOT#08 CARTER 36N-33HZ (825'FNL & 1530'FWL, SEC.33)
Area	COLORADO	Well	CARTER 36N-33HZ
Field	WELD COUNTY (UTM/TRUE NORTH)	Wellbore	CARTER 36N-33HZ AWP <12466>
Facility	SEC.33-T2N-R66W		

WELLPATH DATA (134 stations) † = interpolated/extrapolated station

MD [ft]	Inclination [°]	Azimuth [°]	TVD [ft]	Vert Sect [ft]	North [ft]	East [ft]	Latitude	Longitude	DLS [°/100ft]	Comments
4337.00	15.730	45.830	4169.92	-697.37	699.43	856.47	40°06'05.403"N	104°46'59.151"W	1.87	
4432.00	16.860	45.330	4261.10	-715.98	718.09	875.51	40°06'05.588"N	104°46'58.906"W	1.20	
4527.00	16.060	42.510	4352.21	-735.31	737.46	894.19	40°06'05.779"N	104°46'58.665"W	1.19	
4623.00	14.140	50.810	4444.90	-752.46	754.66	912.25	40°06'05.949"N	104°46'58.433"W	3.01	
4718.00	10.950	52.090	4537.62	-765.30	767.54	928.37	40°06'06.076"N	104°46'58.225"W	3.37	
4813.00	9.680	49.690	4631.08	-775.98	778.25	941.58	40°06'06.182"N	104°46'58.055"W	1.41	
4908.00	8.200	59.130	4724.93	-784.60	786.90	953.48	40°06'06.268"N	104°46'57.902"W	2.19	
5004.00	6.010	55.220	4820.19	-790.96	793.28	963.49	40°06'06.331"N	104°46'57.773"W	2.33	
5099.00	5.210	67.060	4914.73	-795.45	797.80	971.55	40°06'06.375"N	104°46'57.670"W	1.48	
5194.00	3.110	85.250	5009.48	-797.33	799.69	978.09	40°06'06.394"N	104°46'57.586"W	2.58	
5289.00	2.450	84.540	5104.37	-797.73	800.10	982.68	40°06'06.398"N	104°46'57.527"W	0.70	
5384.00	0.970	71.820	5199.33	-798.17	800.54	985.46	40°06'06.402"N	104°46'57.491"W	1.60	
5480.00	1.370	79.050	5295.31	-798.63	801.01	987.36	40°06'06.407"N	104°46'57.466"W	0.44	
5575.00	0.830	76.460	5390.29	-799.01	801.39	989.15	40°06'06.411"N	104°46'57.443"W	0.57	
5671.00	0.460	65.900	5486.28	-799.32	801.71	990.17	40°06'06.414"N	104°46'57.430"W	0.40	
5861.00	0.250	244.390	5676.28	-799.46	801.84	990.50	40°06'06.415"N	104°46'57.426"W	0.37	
5957.00	1.200	145.820	5772.27	-798.53	800.92	990.87	40°06'06.406"N	104°46'57.421"W	1.31	
6052.00	0.740	163.680	5867.26	-797.12	799.51	991.60	40°06'06.392"N	104°46'57.412"W	0.57	
6147.00	0.480	171.700	5962.25	-796.14	798.53	991.83	40°06'06.383"N	104°46'57.409"W	0.29	
6243.00	0.730	243.820	6058.25	-795.47	797.86	991.34	40°06'06.376"N	104°46'57.415"W	0.77	
6338.00	0.220	269.490	6153.25	-795.20	797.59	990.62	40°06'06.373"N	104°46'57.424"W	0.57	
6433.00	0.970	270.220	6248.24	-795.21	797.59	989.63	40°06'06.373"N	104°46'57.437"W	0.79	
6529.00	0.700	128.070	6344.24	-794.85	797.23	989.28	40°06'06.370"N	104°46'57.442"W	1.65	
6624.00	0.340	244.140	6439.23	-794.37	796.75	989.48	40°06'06.365"N	104°46'57.439"W	0.95	
6720.00	1.440	61.080	6535.22	-794.82	797.21	990.28	40°06'06.370"N	104°46'57.429"W	1.85	
6814.00	0.930	57.850	6629.20	-795.80	798.19	991.96	40°06'06.379"N	104°46'57.407"W	0.55	
6910.00	3.720	194.030	6725.15	-793.19	795.58	991.87	40°06'06.353"N	104°46'57.408"W	4.62	
7005.00	9.170	187.370	6819.51	-782.69	785.08	990.15	40°06'06.250"N	104°46'57.430"W	5.78	
7100.00	17.180	187.780	6911.93	-761.25	763.63	987.27	40°06'06.038"N	104°46'57.467"W	8.43	
7196.00	23.700	191.240	7001.84	-728.26	730.62	981.59	40°06'05.712"N	104°46'57.541"W	6.90	
7290.00	32.410	188.160	7084.72	-684.72	687.07	974.31	40°06'05.281"N	104°46'57.634"W	9.39	
7386.00	41.400	180.880	7161.45	-627.38	629.72	970.16	40°06'04.714"N	104°46'57.688"W	10.40	
7406.00†	43.539	180.952	7176.20	-613.88	616.22	969.95	40°06'04.581"N	104°46'57.690"W	10.70	SSPG
7481.00	51.560	181.180	7226.78	-558.60	560.94	968.91	40°06'04.035"N	104°46'57.704"W	10.70	
7492.00†	52.892	180.484	7233.52	-549.91	552.24	968.79	40°06'03.949"N	104°46'57.705"W	13.10	NBRR
7576.00	63.170	175.840	7277.95	-478.81	481.15	971.23	40°06'03.246"N	104°46'57.674"W	13.10	
7672.00	72.760	175.270	7313.92	-390.18	392.54	978.13	40°06'02.371"N	104°46'57.585"W	10.00	
7700.00†	75.344	175.745	7321.62	-363.34	365.70	980.24	40°06'02.105"N	104°46'57.558"W	9.37	ENTERED LANDBOX
7767.00	81.530	176.840	7335.04	-297.86	300.23	984.48	40°06'01.458"N	104°46'57.504"W	9.37	
7831.00†	86.046	180.246	7341.97	-234.27	236.65	986.09	40°06'00.830"N	104°46'57.483"W	8.82	LANDING POINT
7862.00	88.240	181.880	7343.51	-203.32	205.70	985.51	40°06'00.524"N	104°46'57.490"W	8.82	
7958.00	91.110	181.200	7344.06	-107.38	109.74	982.93	40°05'59.576"N	104°46'57.524"W	3.07	
8053.00	91.200	179.320	7342.14	-12.40	14.77	982.50	40°05'58.637"N	104°46'57.529"W	1.98	
8148.00	91.850	178.840	7339.61	82.55	-80.18	984.03	40°05'57.699"N	104°46'57.510"W	0.85	
8339.00	90.280	179.680	7336.06	273.50	-271.13	986.49	40°05'55.812"N	104°46'57.478"W	0.93	

Actual Wellpath Report

CARTER 36N-33HZ AWP

Page 4 of 6

REFERENCE WELLPATH IDENTIFICATION

Operator	KERR-MCGEE OIL & GAS ONSHORE LP (WA)	Slot	SLOT#08 CARTER 36N-33HZ (825'FNL & 1530'FWL, SEC.33)
Area	COLORADO	Well	CARTER 36N-33HZ
Field	WELD COUNTY (UTM/TRUE NORTH)	Wellbore	CARTER 36N-33HZ AWP <12466>
Facility	SEC.33-T2N-R66W		

WELLPATH DATA (134 stations)

MD [ft]	Inclination [°]	Azimuth [°]	TVD [ft]	Vert Sect [ft]	North [ft]	East [ft]	Latitude	Longitude	DLS [°/100ft]	Comments
8434.00	88.250	178.400	7337.28	368.48	-366.10	988.08	40°05'54.874"N	104°46'57.458"W	2.53	
8529.00	88.860	177.240	7339.68	463.39	-461.00	991.70	40°05'53.936"N	104°46'57.411"W	1.38	
8624.00	90.060	176.910	7340.57	558.27	-555.87	996.54	40°05'52.998"N	104°46'57.349"W	1.31	
8719.00	88.980	176.460	7341.37	653.12	-650.71	1002.04	40°05'52.061"N	104°46'57.278"W	1.23	
8815.00	89.720	178.130	7342.46	749.01	-746.59	1006.57	40°05'51.114"N	104°46'57.220"W	1.90	
8910.00	88.830	178.890	7343.66	843.97	-841.55	1009.04	40°05'50.175"N	104°46'57.188"W	1.23	
9005.00	87.660	181.520	7346.57	938.92	-936.49	1008.70	40°05'49.237"N	104°46'57.193"W	3.03	
9101.00	88.710	181.170	7349.61	1034.84	-1032.42	1006.44	40°05'48.289"N	104°46'57.222"W	1.15	
9196.00	90.000	181.080	7350.68	1129.81	-1127.39	1004.58	40°05'47.350"N	104°46'57.246"W	1.36	
9291.00	88.920	180.260	7351.57	1224.79	-1222.38	1003.47	40°05'46.412"N	104°46'57.260"W	1.43	
9386.00	89.850	180.030	7352.59	1319.78	-1317.37	1003.23	40°05'45.473"N	104°46'57.263"W	1.01	
9481.00	90.460	179.940	7352.34	1414.78	-1412.37	1003.25	40°05'44.534"N	104°46'57.263"W	0.65	
9577.00	89.880	181.190	7352.05	1510.77	-1508.36	1002.31	40°05'43.586"N	104°46'57.275"W	1.44	
9672.00	91.290	180.950	7351.08	1605.74	-1603.34	1000.53	40°05'42.647"N	104°46'57.298"W	1.51	
9768.00	88.950	181.530	7350.88	1701.71	-1699.31	998.46	40°05'41.699"N	104°46'57.325"W	2.51	
9863.00	89.010	180.700	7352.57	1796.67	-1794.27	996.61	40°05'40.760"N	104°46'57.349"W	0.88	
9958.00	89.260	179.720	7354.01	1891.65	-1889.26	996.26	40°05'39.821"N	104°46'57.353"W	1.06	
10053.00	90.430	179.540	7354.26	1986.65	-1984.26	996.87	40°05'38.883"N	104°46'57.345"W	1.25	
10149.00	89.600	180.580	7354.24	2082.65	-2080.25	996.77	40°05'37.934"N	104°46'57.347"W	1.39	
10244.00	90.460	180.720	7354.19	2177.64	-2175.25	995.69	40°05'36.995"N	104°46'57.361"W	0.92	
10339.00	89.910	181.260	7353.88	2272.62	-2270.23	994.05	40°05'36.057"N	104°46'57.382"W	0.81	
10434.00	90.460	180.770	7353.58	2367.60	-2365.22	992.37	40°05'35.118"N	104°46'57.403"W	0.78	
10529.00	90.430	180.280	7352.84	2462.59	-2460.21	991.50	40°05'34.179"N	104°46'57.415"W	0.52	
10625.00	89.630	179.850	7352.79	2558.59	-2556.21	991.39	40°05'33.231"N	104°46'57.416"W	0.95	
10720.00	90.620	179.890	7352.58	2653.59	-2651.21	991.61	40°05'32.292"N	104°46'57.413"W	1.04	
10815.00	89.940	178.890	7352.12	2748.58	-2746.20	992.62	40°05'31.353"N	104°46'57.400"W	1.27	
10910.00	90.060	179.230	7352.12	2843.57	-2841.18	994.18	40°05'30.414"N	104°46'57.380"W	0.38	
11005.00	89.230	178.870	7352.70	2938.56	-2936.17	995.75	40°05'29.476"N	104°46'57.360"W	0.95	
11101.00	89.850	178.940	7353.47	3034.54	-3032.15	997.59	40°05'28.527"N	104°46'57.337"W	0.65	
11196.00	88.610	178.070	7354.75	3129.50	-3127.10	1000.06	40°05'27.589"N	104°46'57.305"W	1.59	
11291.00	89.200	177.700	7356.57	3224.43	-3222.02	1003.57	40°05'26.651"N	104°46'57.260"W	0.73	
11386.00	89.570	176.920	7357.59	3319.33	-3316.91	1008.03	40°05'25.713"N	104°46'57.202"W	0.91	
11481.00	89.260	177.890	7358.56	3414.24	-3411.81	1012.33	40°05'24.775"N	104°46'57.147"W	1.07	
11576.00	89.380	179.630	7359.68	3509.21	-3506.77	1014.38	40°05'23.837"N	104°46'57.121"W	1.84	
11670.00	90.520	179.670	7359.77	3603.21	-3600.77	1014.96	40°05'22.908"N	104°46'57.113"W	1.21	
11766.00	90.400	180.300	7359.00	3699.20	-3696.77	1014.98	40°05'21.959"N	104°46'57.113"W	0.67	
11860.00	91.020	179.490	7357.83	3793.19	-3790.76	1015.16	40°05'21.031"N	104°46'57.111"W	1.09	
11956.00	90.650	180.850	7356.43	3889.18	-3886.75	1014.87	40°05'20.082"N	104°46'57.115"W	1.47	
12051.00	90.460	181.170	7355.51	3984.16	-3981.73	1013.20	40°05'19.143"N	104°46'57.136"W	0.39	
12146.00	88.890	180.160	7356.05	4079.14	-4076.71	1012.09	40°05'18.205"N	104°46'57.151"W	1.97	
12242.00	88.860	180.120	7357.94	4175.12	-4172.70	1011.86	40°05'17.256"N	104°46'57.154"W	0.05	
12337.00	88.890	179.660	7359.80	4270.10	-4267.68	1012.04	40°05'16.318"N	104°46'57.151"W	0.49	
12417.00	89.080	178.970	7361.22	4350.09	-4347.66	1013.00	40°05'15.527"N	104°46'57.139"W	0.89	LAST BHI MWD+IFR SURVEYS
12466.00	89.080	178.970	7362.00	4399.07	-4396.64	1013.88	40°05'15.043"N	104°46'57.128"W	0.00	PROJECTION TO BIT

Actual Wellpath Report

CARTER 36N-33HZ AWP

Page 5 of 6

REFERENCE WELLPATH IDENTIFICATION

Operator	KERR-MCGEE OIL & GAS ONSHORE LP (WA)	Slot	SLOT#08 CARTER 36N-33HZ (825'FNL & 1530'FWL, SEC.33)
Area	COLORADO	Well	CARTER 36N-33HZ
Field	WELD COUNTY (UTM/TRUE NORTH)	Wellbore	CARTER 36N-33HZ AWP <12466>
Facility	SEC.33-T2N-R66W		

HOLE & CASING SECTIONS - Ref Wellbore: CARTER 36N-33HZ AWP <12466> Ref Wellpath: CARTER 36N-33HZ AWP

String/Diameter	Start MD [ft]	End MD [ft]	Interval [ft]	Start TVD [ft]	End TVD [ft]	Start N/S [ft]	Start E/W [ft]	End N/S [ft]	End E/W [ft]
13.5in Open Hole	16.00	1894.00	1878.00	16.00	1844.18	0.00	0.00	244.79	265.94
9.625in Casing Surface	16.00	1884.00	1868.00	16.00	1834.83	0.00	0.00	242.44	263.28
7.875in Open Hole	1894.00	12466.00	10572.00	1844.18	7362.00	244.79	265.94	-4396.64	1013.88

TARGETS

Name	TVD [ft]	North [ft]	East [ft]	Grid East [US ft]	Grid North [US ft]	Latitude	Longitude	Shape
SEC.28-T2N-R66W SECTION LINES	0.00	0.73	-209.82	1700006.25	14563067.36	40°05'58.499"N	104°47'12.872"W	polygon
SEC.32-T2N-R66W SECTION LINES	0.00	0.73	-209.82	1700006.25	14563067.36	40°05'58.499"N	104°47'12.872"W	polygon
SEC.33-T2N-R66W SECTION LINES	0.00	0.73	-209.82	1700006.25	14563067.36	40°05'58.499"N	104°47'12.872"W	polygon
CARTER 36N-33HZ BHL ON PLAT (50'FSL & 2528'FWL, SEC.33) REV-1	7340.00	-4396.63	1009.26	1701235.40	14558674.69	40°05'15.043"N	104°46'57.187"W	point
CARTER 36N-33HZ LANDBOX	7340.00	0.00	0.00	1700215.98	14563067.13	40°05'58.492"N	104°47'10.172"W	polygon
SEC.29-T2N-R66W SECTION LINES	7524.00	5794.33	-3891.17	1696312.45	14568849.79	40°06'55.749"N	104°48'00.257"W	polygon

WELLPATH COMPOSITION - Ref Wellbore: CARTER 36N-33HZ AWP <12466> Ref Wellpath: CARTER 36N-33HZ AWP

Start MD [ft]	End MD [ft]	Positional Uncertainty Model	Log Name/Comment	Wellbore
16.00	1835.00	Custom_APC_ISCWSA REV 2 MWD	SCIENTIFIC DRILLING MWD SURVEYS <129-1835>	CARTER 36N-33HZ AWP <12466>
1835.00	12417.00	Custom APC_ISCWSA REV 2 MWD+IFR1+SC (approximation)	BHI MWD+IFR SURVEYS 7 7/8" HOLE <1957-12417>	CARTER 36N-33HZ AWP <12466>
12417.00	12466.00	Blind Drilling (std)	Projection to bit	CARTER 36N-33HZ AWP <12466>



Actual Wellpath Report

CARTER 36N-33HZ AWP
Page 6 of 6



REFERENCE WELLPATH IDENTIFICATION			
Operator	KERR-MCGEE OIL & GAS ONSHORE LP (WA)	Slot	SLOT#08 CARTER 36N-33HZ (825'FNL & 1530'FWL, SEC.33)
Area	COLORADO	Well	CARTER 36N-33HZ
Field	WELD COUNTY (UTM/TRUE NORTH)	Wellbore	CARTER 36N-33HZ AWB <12466>
Facility	SEC.33-T2N-R66W		

WELLPATH COMMENTS				
MD [ft]	Inclination [°]	Azimuth [°]	TVD [ft]	Comment
129.00	0.110	134.080	129.00	BEGIN MWD SURVEYS
1835.00	21.510	48.600	1789.13	TIE-ONTO MWD SURVEYS
1957.00	19.740	48.430	1903.31	BEGIN BHI MWD+IFR SURVEYS
7406.00	43.539	180.952	7176.20	SSPG
7492.00	52.892	180.484	7233.52	NBRR
7700.00	75.344	175.745	7321.62	ENTERED LANDBOX
7831.00	86.046	180.246	7341.97	LANDING POINT
12417.00	89.080	178.970	7361.22	LAST BHI MWD+IFR SURVEYS
12466.00	89.080	178.970	7362.00	PROJECTION TO BIT