

part of Baker Hughes. Unless other contract terms have been agreed to by the parties, each party's liabilities and

Log Run Summary

Run No	Bit Run No.	Bit Size (in)	Bit Type	Bit Gauge Length (in)	Assembly Type	Logged Interval		Bit Depth Interval		Date / Time		Circ. Hours (h)
						Top	Bottom	From	To	Start Logging	End Logging	
						(ft)	(ft)	(ft)	(ft)			
1	1	7.875	PDC	3.00	Motor	1863.82	12421.08	1909.00	12466.26	2015-08-25 01:57	2015-08-27 16:02	55.40

Crew

Name	Arrive Wellsite	Depart Wellsite	Name	Arrive Wellsite	Depart Wellsite	Name	Arrive Wellsite	Depart Wellsite
Andrew Clancy	2015-08-23	2015-08-28	Nick Gerard	2015-08-23	2015-08-28			

Mud Properties Record

Date / Time	Run No.	Measured Depth (ft)	Mud Type	Density (ppg)	Viscosity (cP)	pH	Fluid Loss (cm3)	Oil / Water	Source	Total Chlorides (ppm)	K+ (%)
2015-08-26 16:57	1	8561.42	Diesel-Oil Based Mud	9.5	48	N/A	0.0	65.4/34.6	Active Pit	77000	0.00

Equipment and Service Data

Run No.	Tool	Serial Number	Measurement	Sensor Offset (ft)	Bit Offset (ft)	Max O.D. (in)	Min I.D. (in)
1	NaviGamma	6055	Gamma (single)	14.26	45.18	6.670	3.000
1	NaviGamma	6055	Directional (mag)	17.67	48.59	6.670	3.000
1	NaviGamma	6055	VSS	17.67	48.59	6.670	3.000

Comments

- 1 Depth measurements were obtained from a depth control system not supplied or operated by Baker Hughes. Due to lack of control by Baker Hughes logging engineers, depth calibrations and measurements could not be independently verified and the unverified depths as supplied to Baker Hughes are being used to represent logging data.
- 2 Baker Hughes Run 1 utilized a 6 1/2 inch Navigamma (Directional and Gamma Ray) tool behind an 7 7/8 inch bit and steerable assembly from 1894 to 12466 feet MD (1844 to 7362 feet TVD).
- 3 A sliding indicator is shown on the left side of the track as a heavy line. This indicator has been depth-shifted to the Gamma Ray sensor offset to correspond with Gamma Ray data acquired while sliding.


Remarks

Number	Measured Depth	Hole Section	Run No.	Remark
--------	-------------------	-----------------	------------	--------

	(ft)	(in)		
1	6800.00	7.875	1	Logging began at 6800 feet MD (6615 feet TVD). No data prior to 6800 feet per Anadarko's request.
2	12421.00	7.875	1	The interval between 12421 to 12466 feet MD (7361 to 7362 feet TVD) has no GRAX, GRIX, GRTX values due to Gamma sensor offset to bit after TD.

Curve Mnemonics

Presented Curves	Description	Units
ROPA	Depth Averaged ROP 3 ft Average	ft/h
GRAX	Gamma Ray - Apparent 0.5 ft Average	API
GRIX	Gamma Ray - Data Point Indicator	unitless
GRTX	Gamma Time Since Drilled	min
GRSI	Sliding Indicator Flag	unitless
TCDX	Downhole Temperature	degF
TVD	True Vertical Depth	ft
WOBA	Weight On Bit, Average 1 ft Average	klb



Company

Well

Interval

Created

Anadarko

CARTER 36N-33HZ

Date From:

2015-08-26 04:03

Top:

6800.00

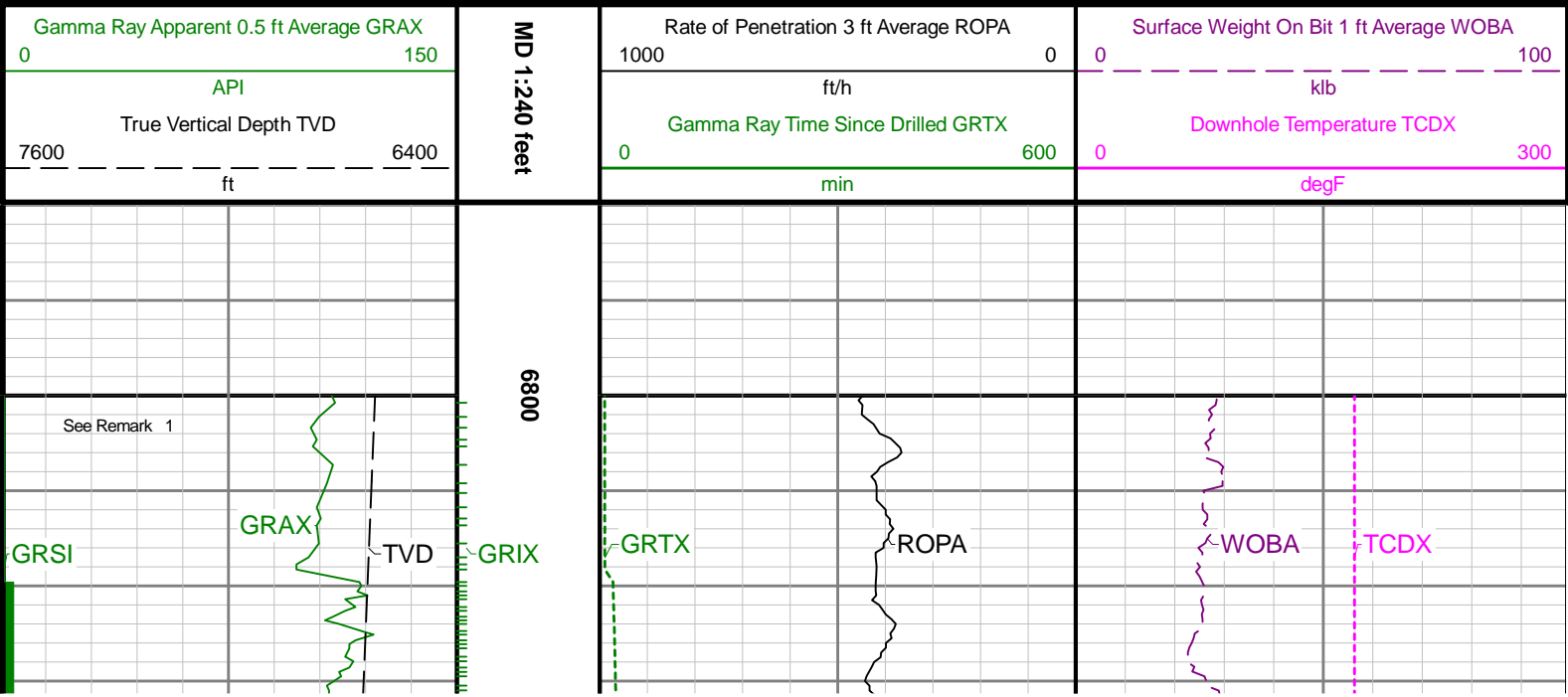
Date To:

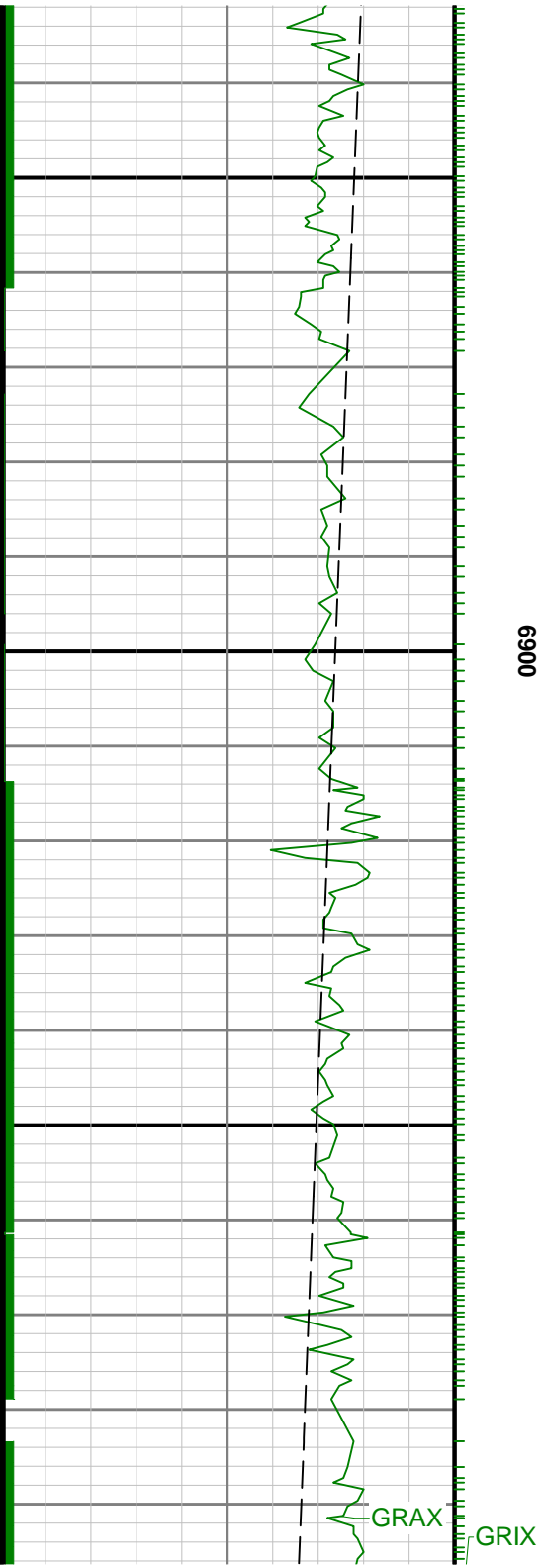
2015-08-27 16:00

Bottom:

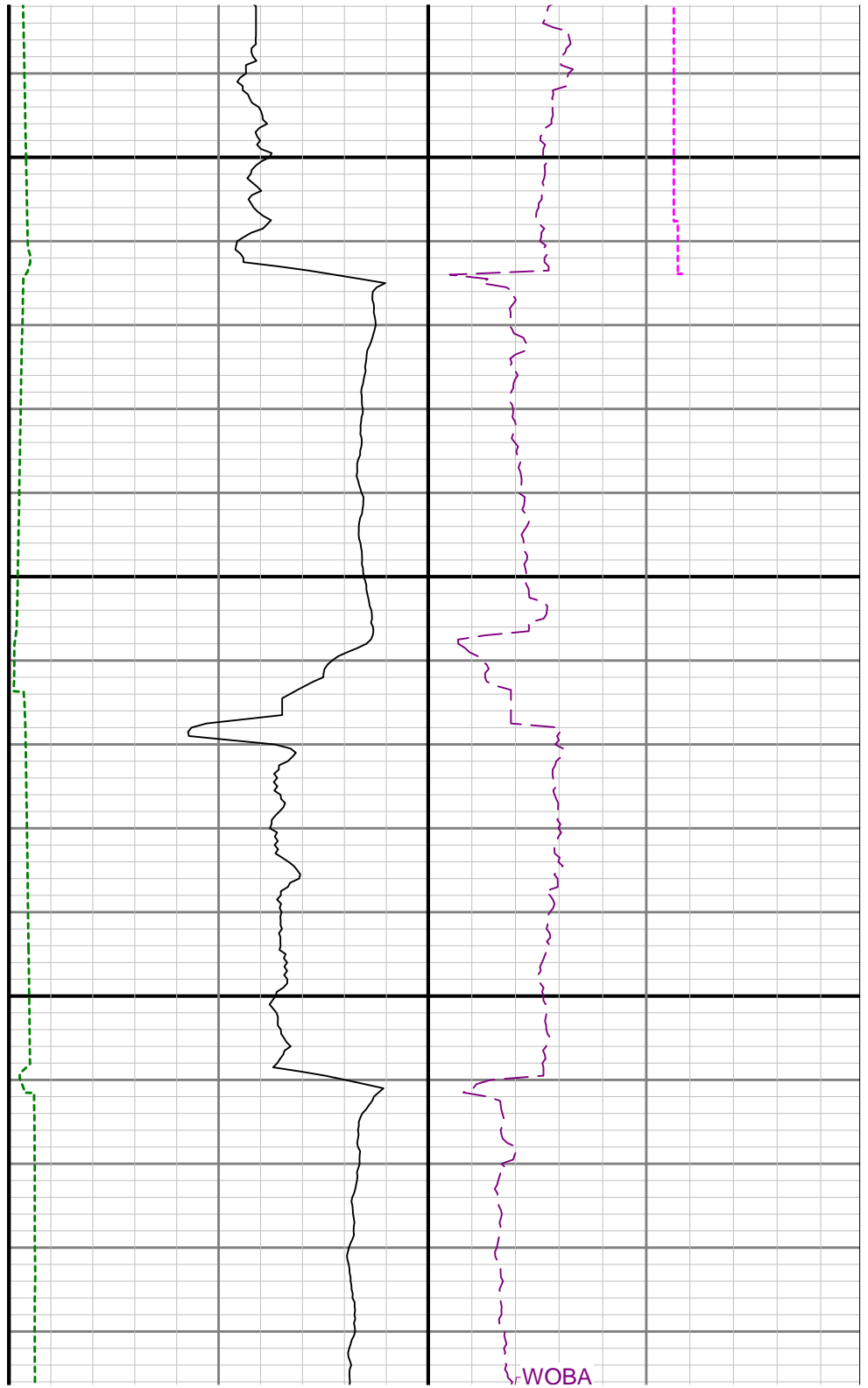
12466.00

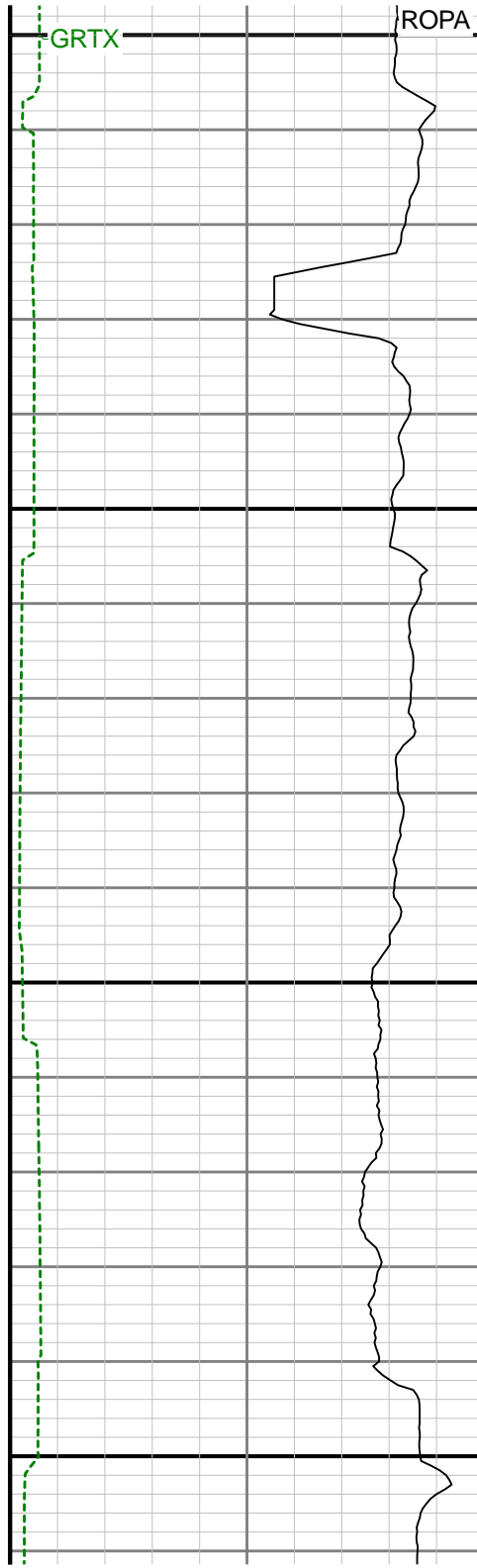
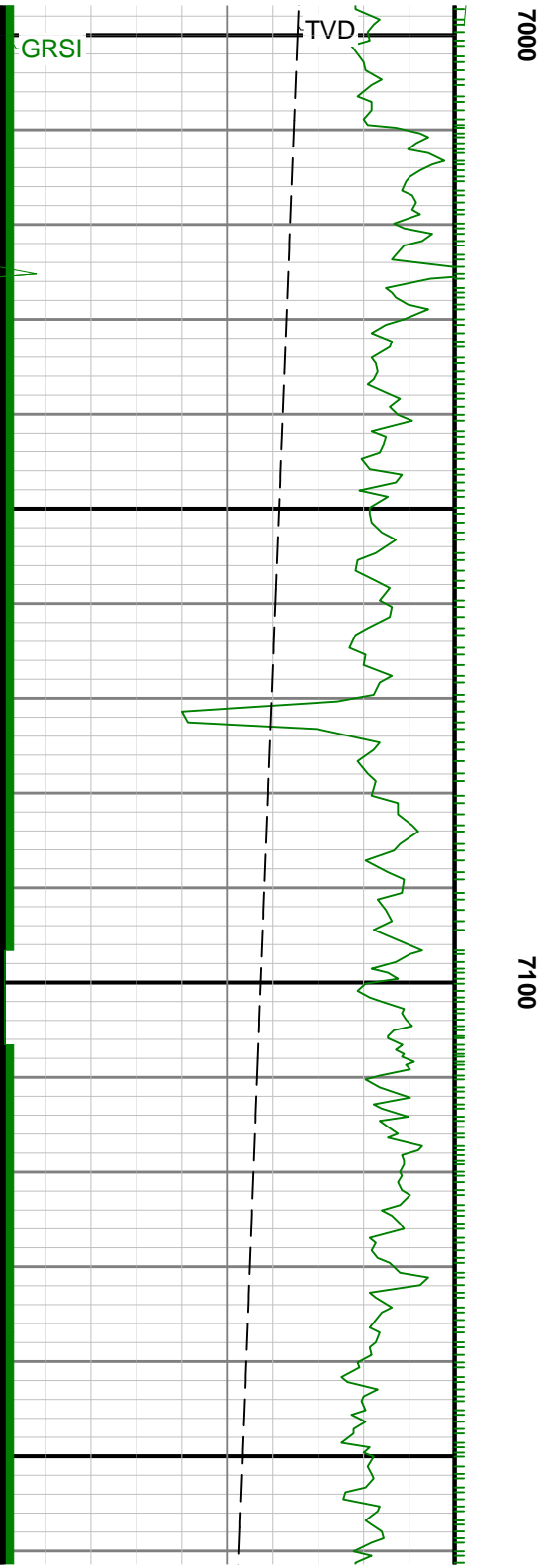
2015-08-27 17:23

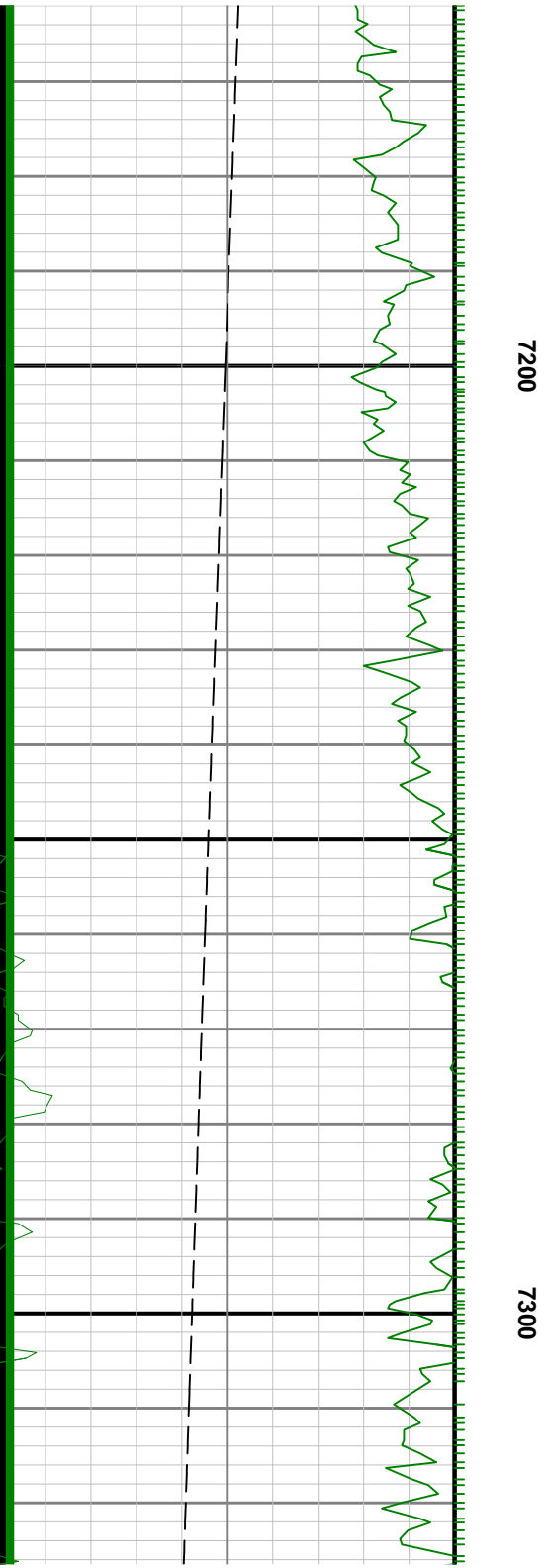
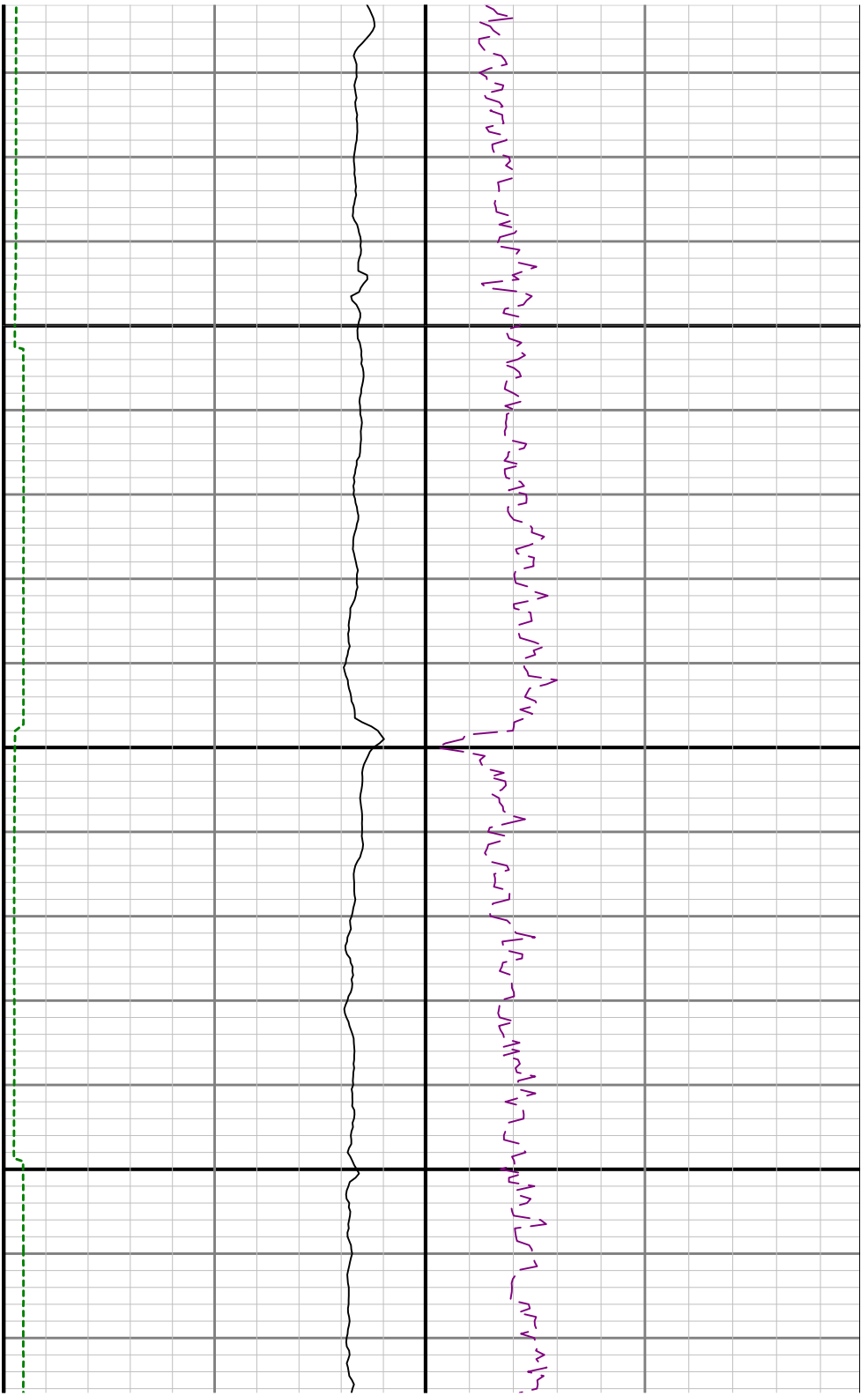


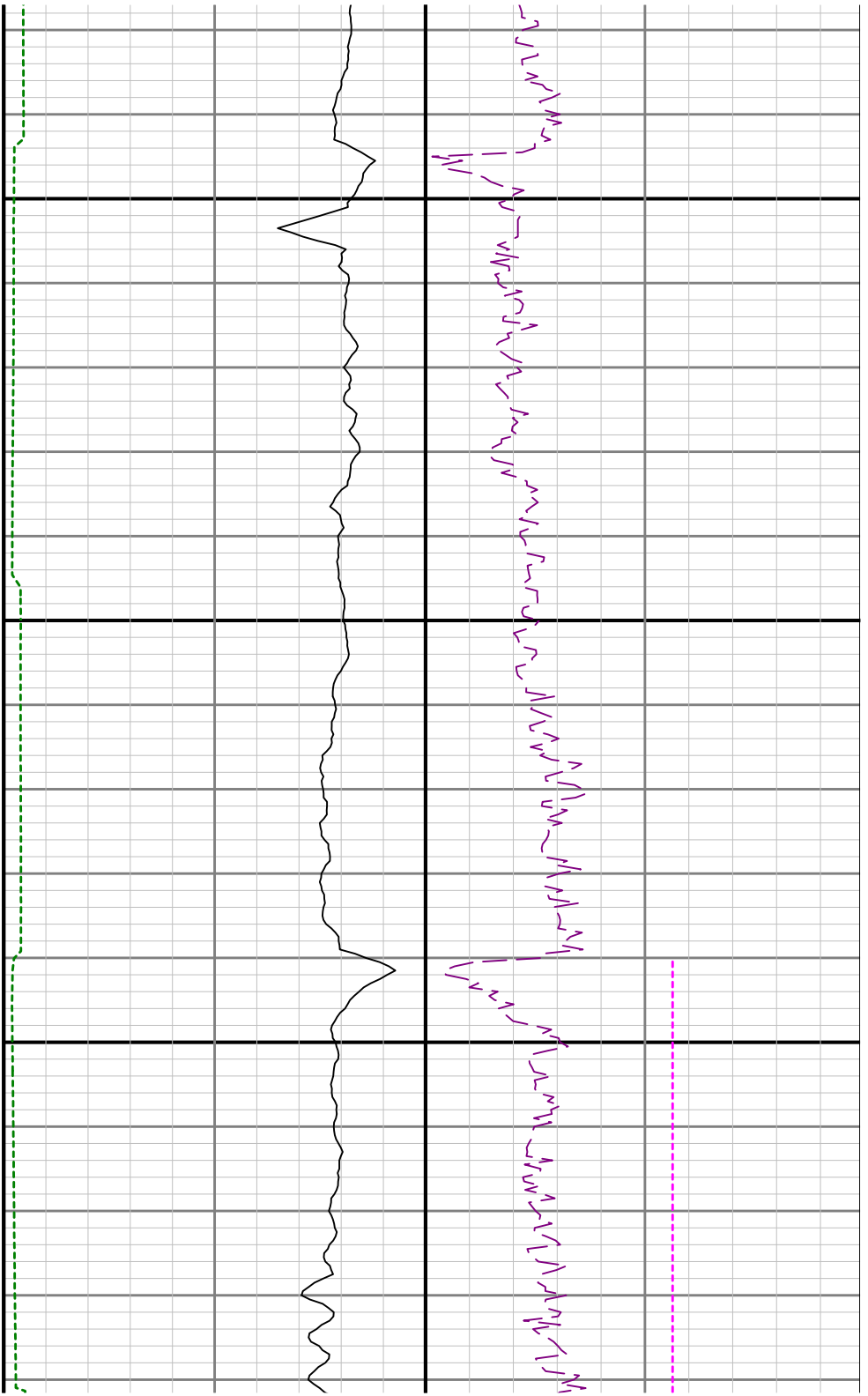


0069

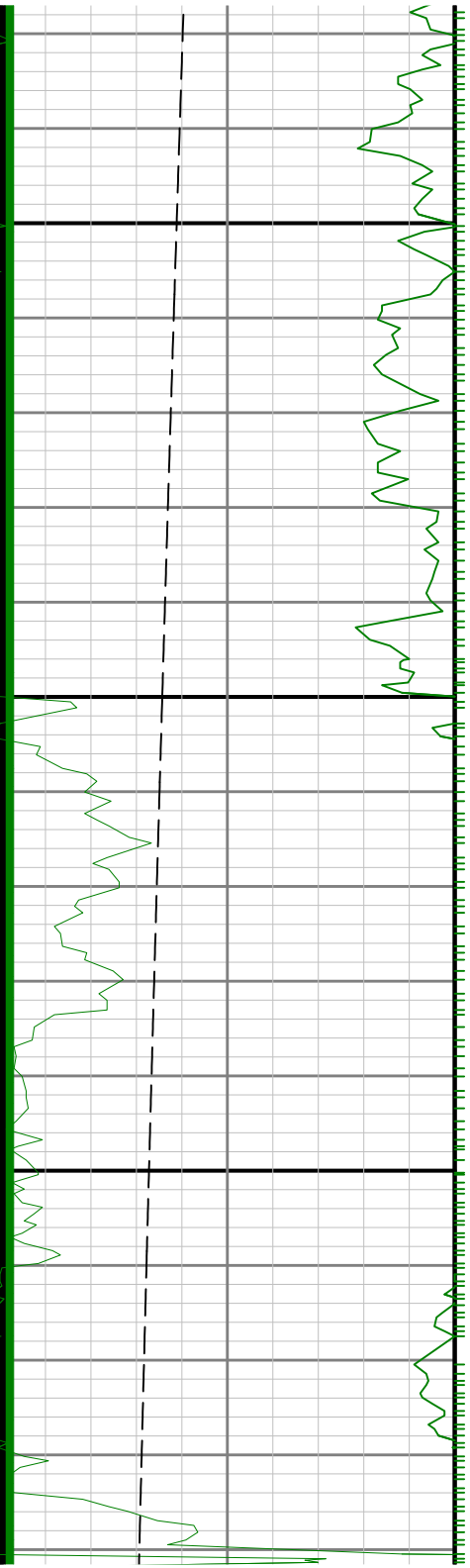


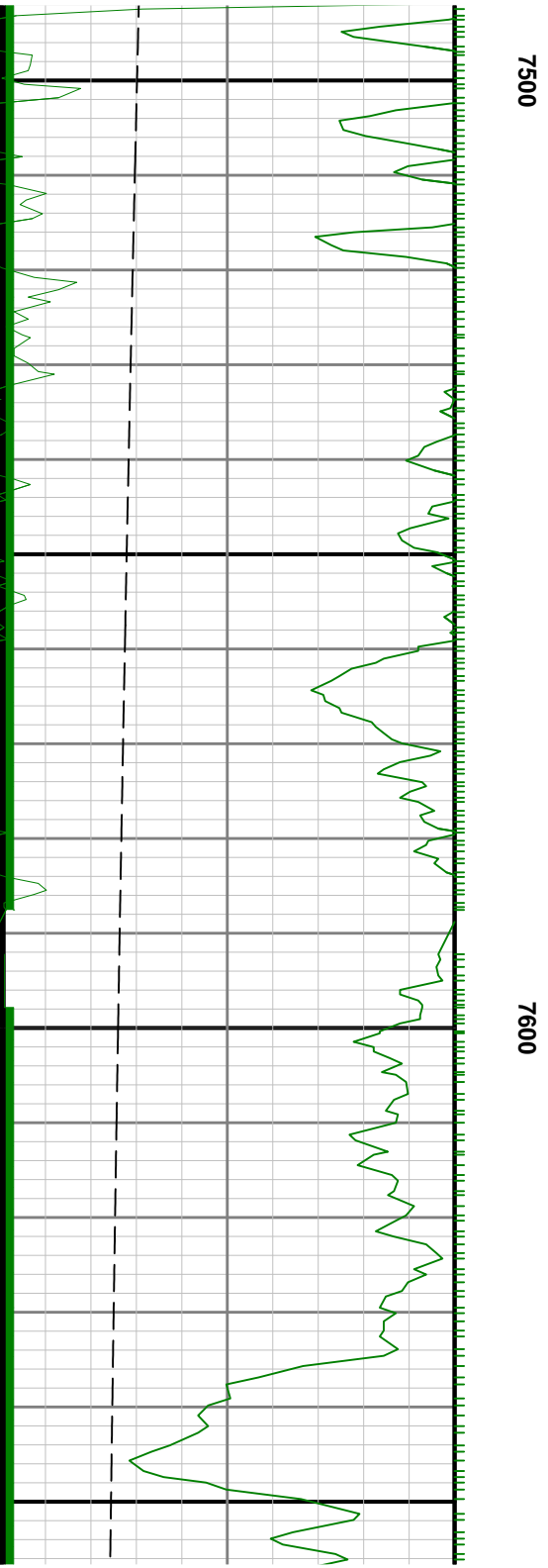
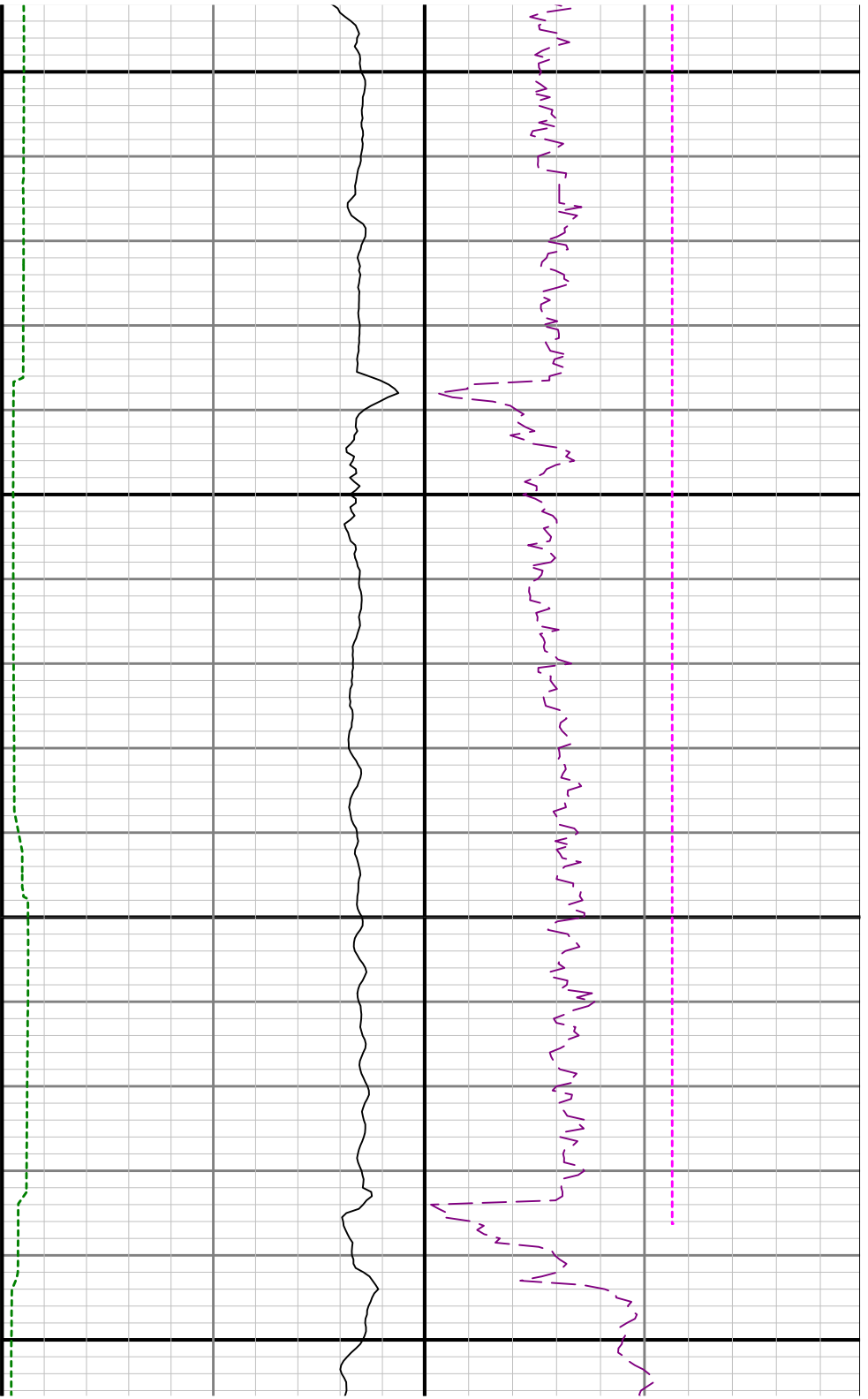


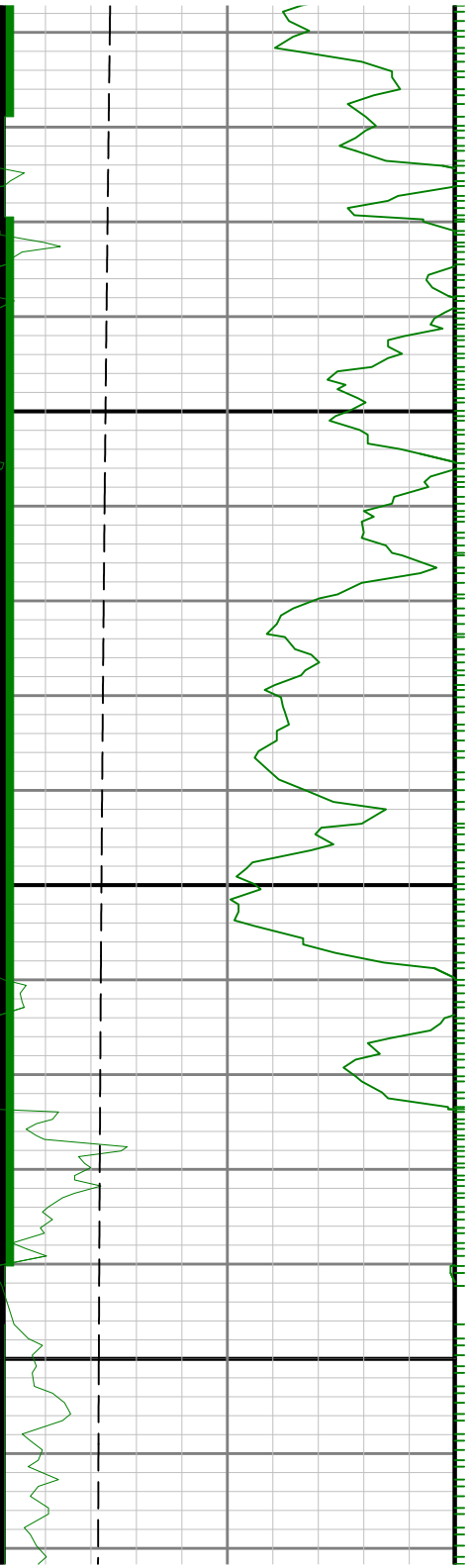




7400

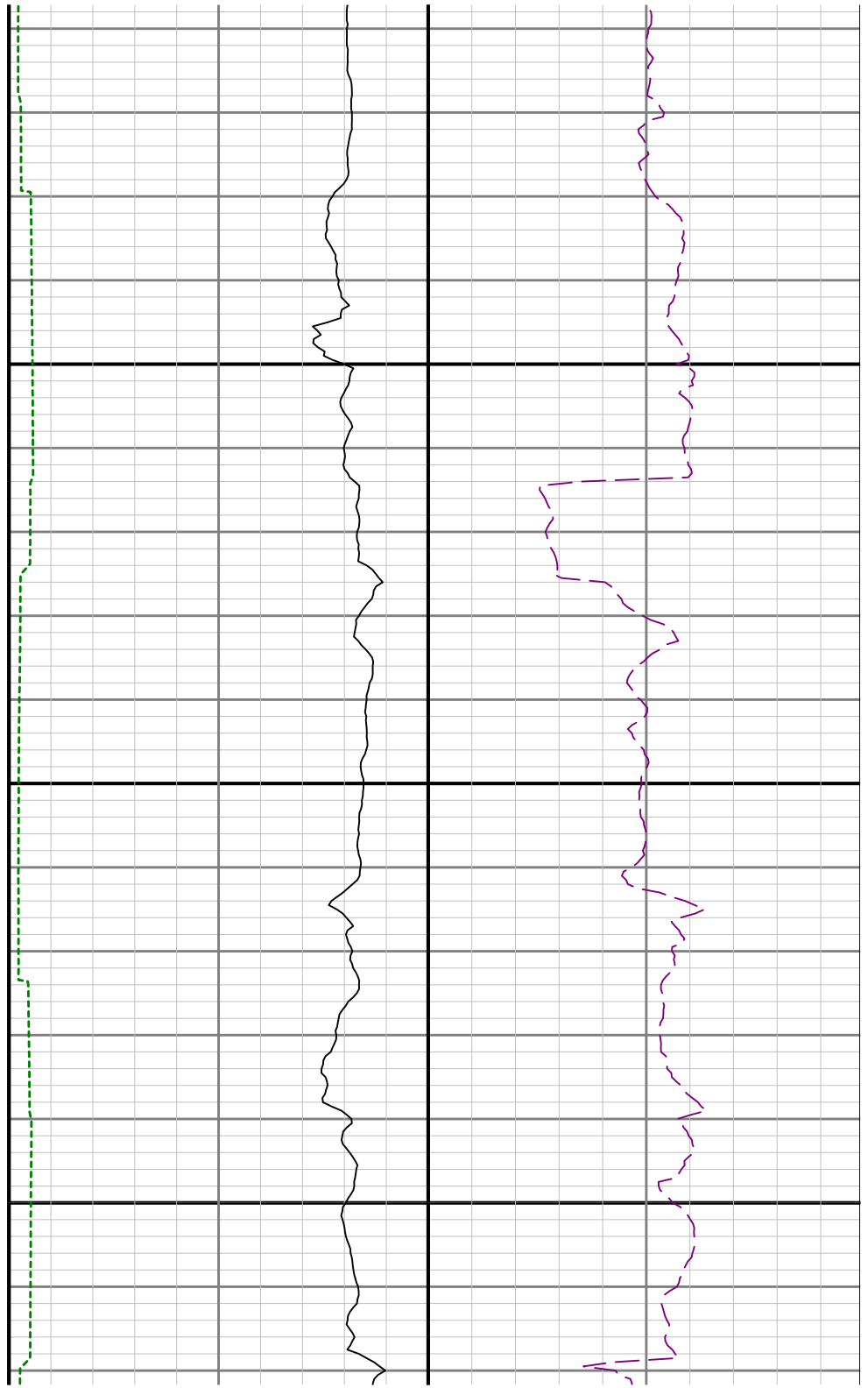


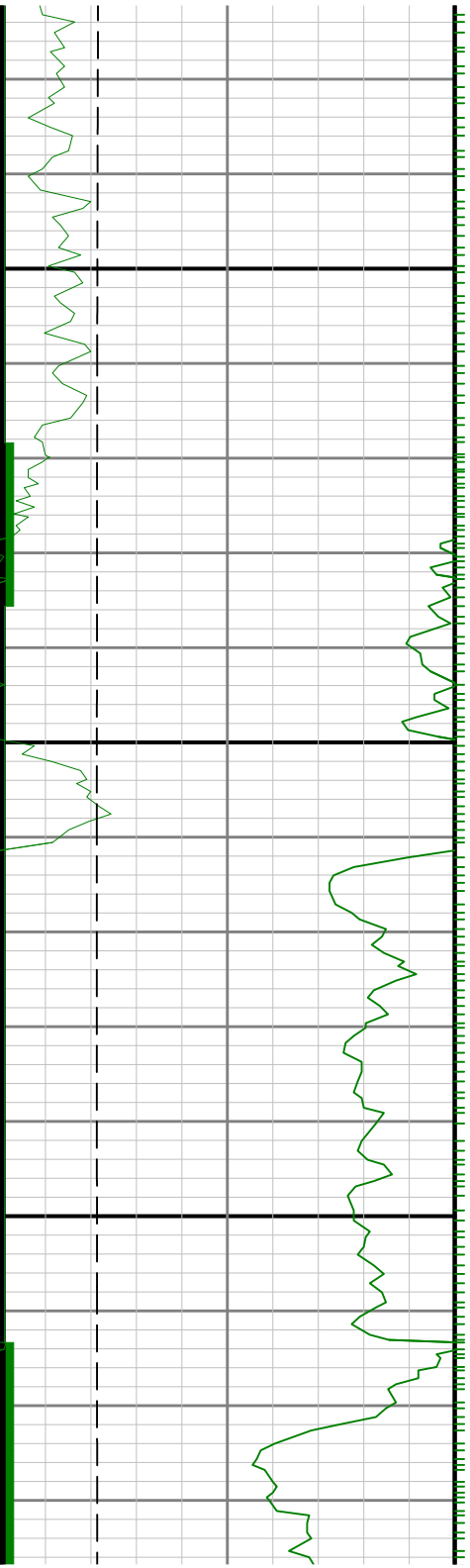




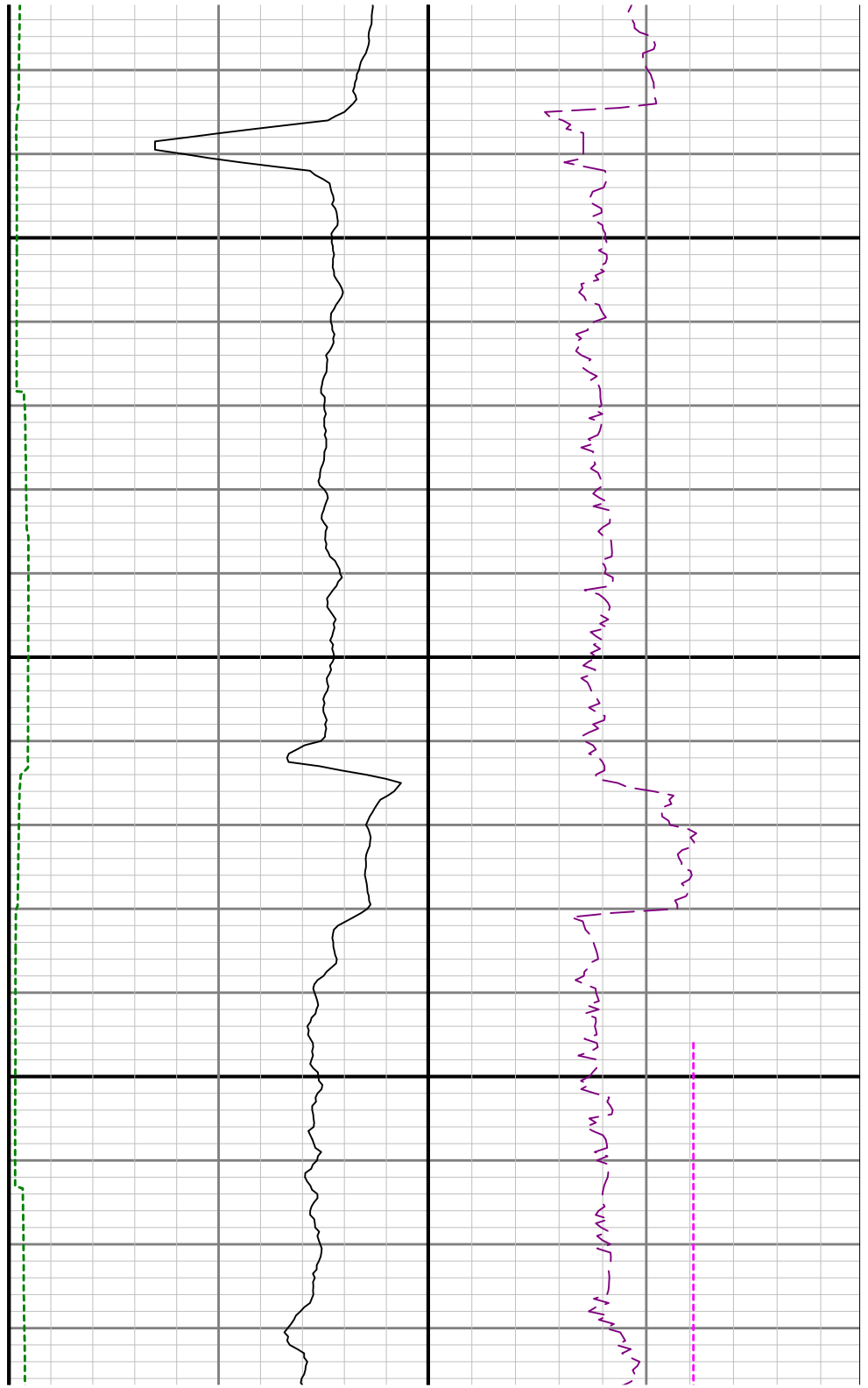
7700

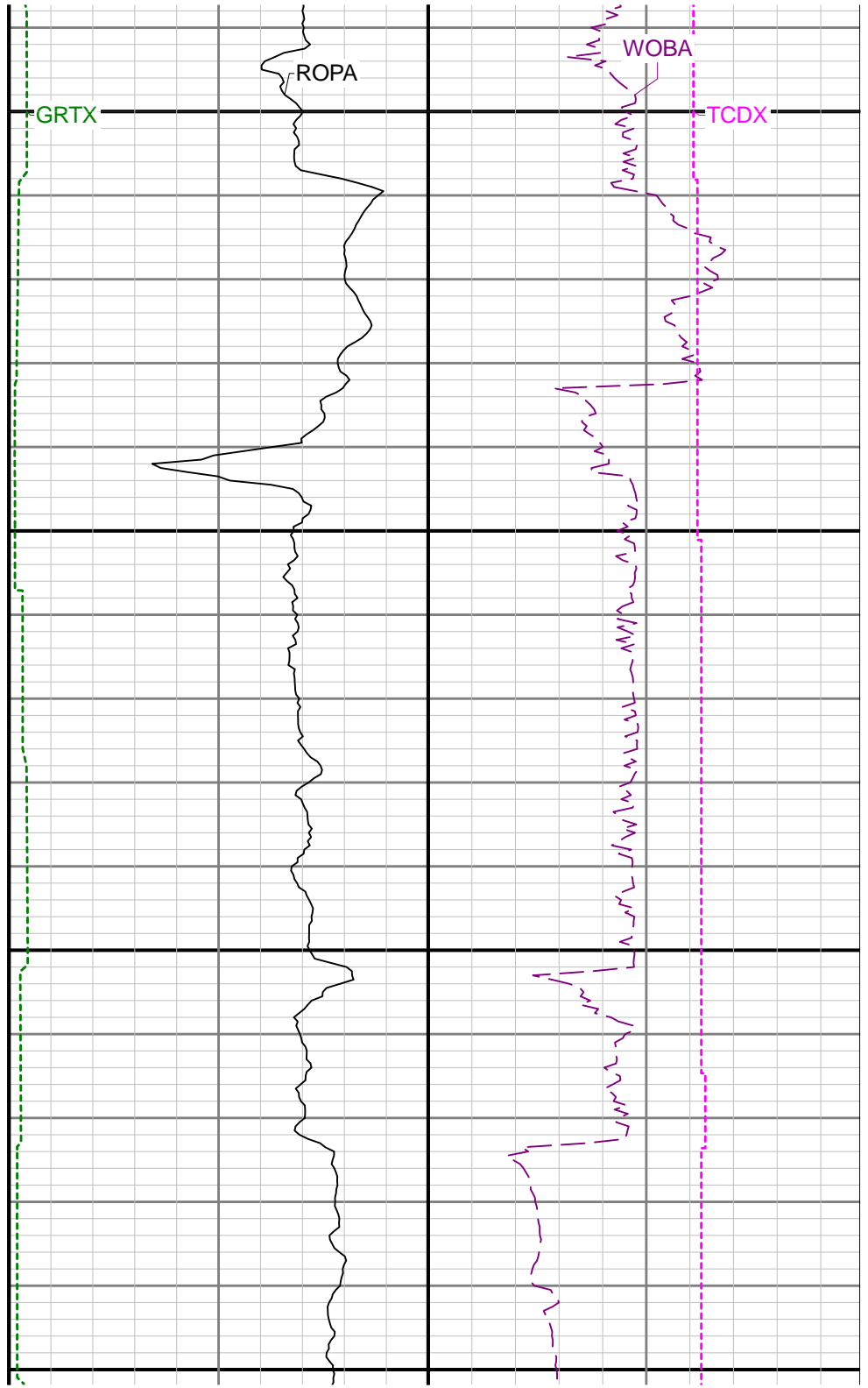
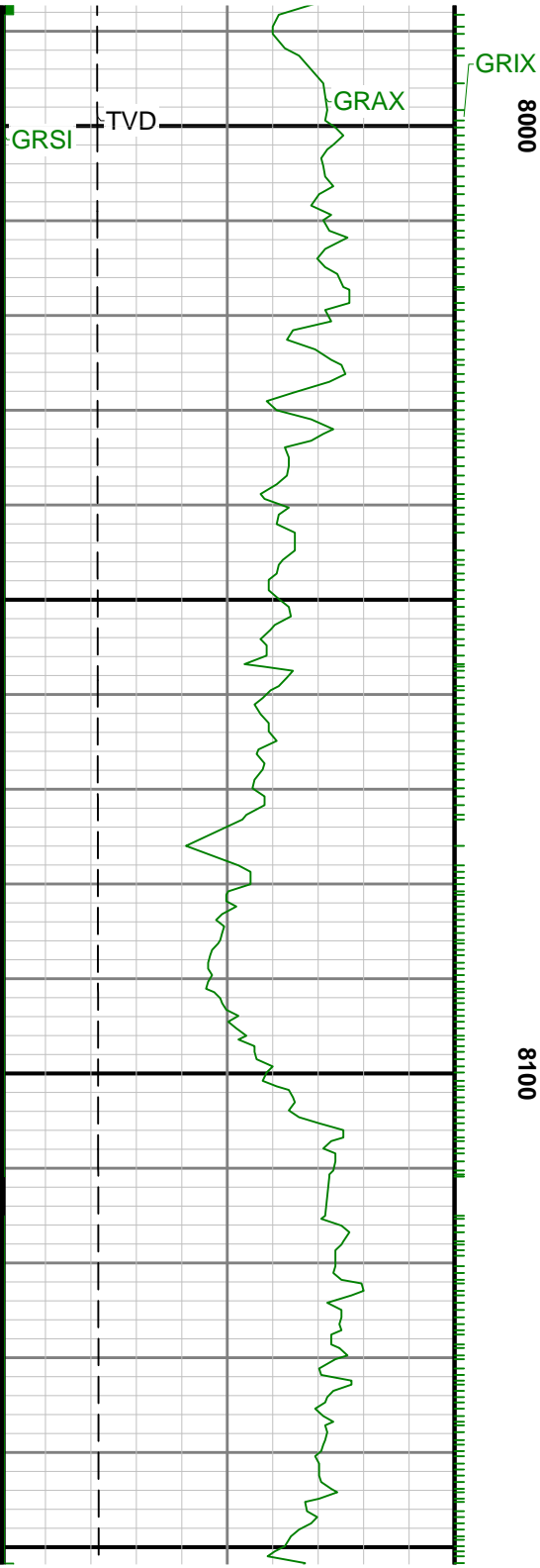
7800

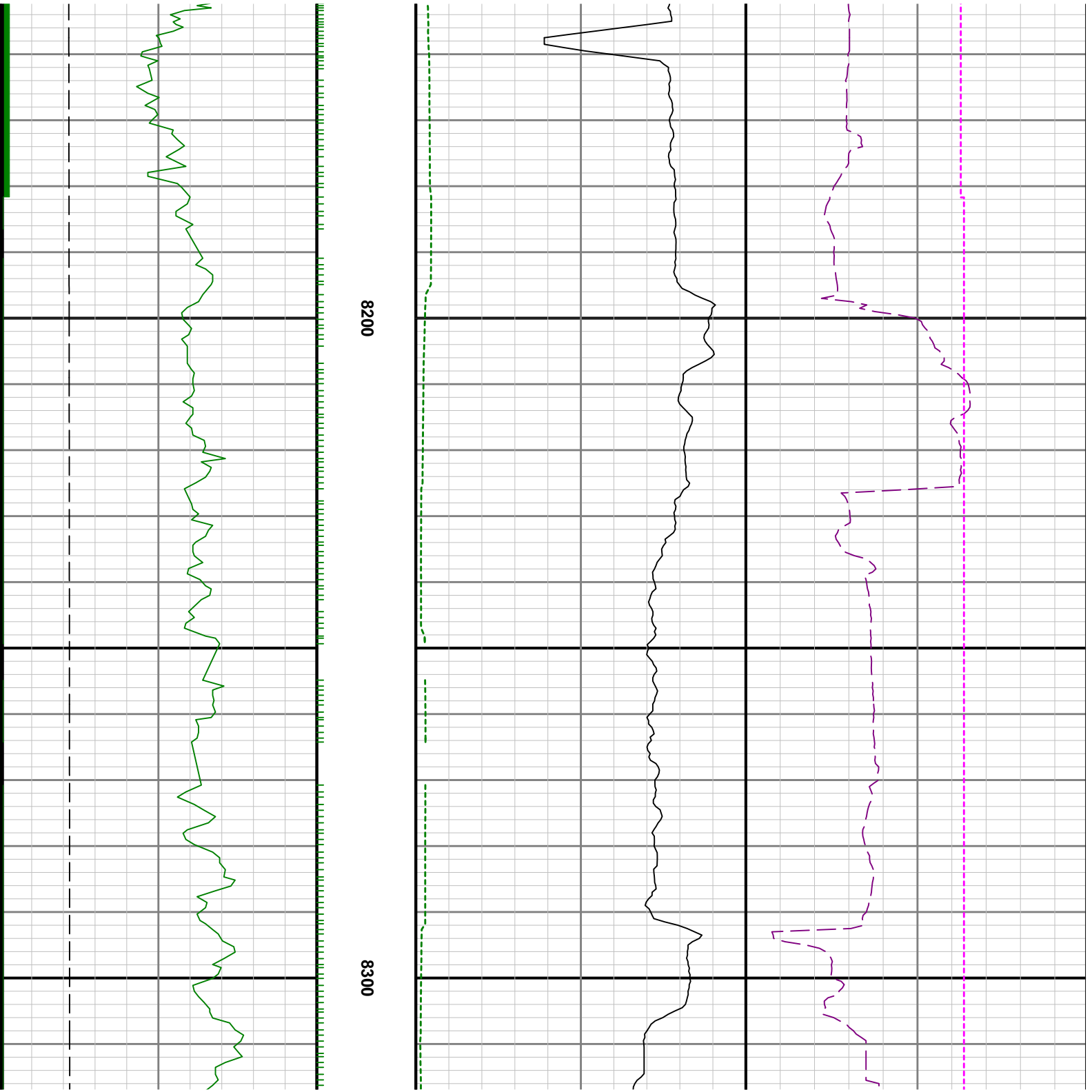


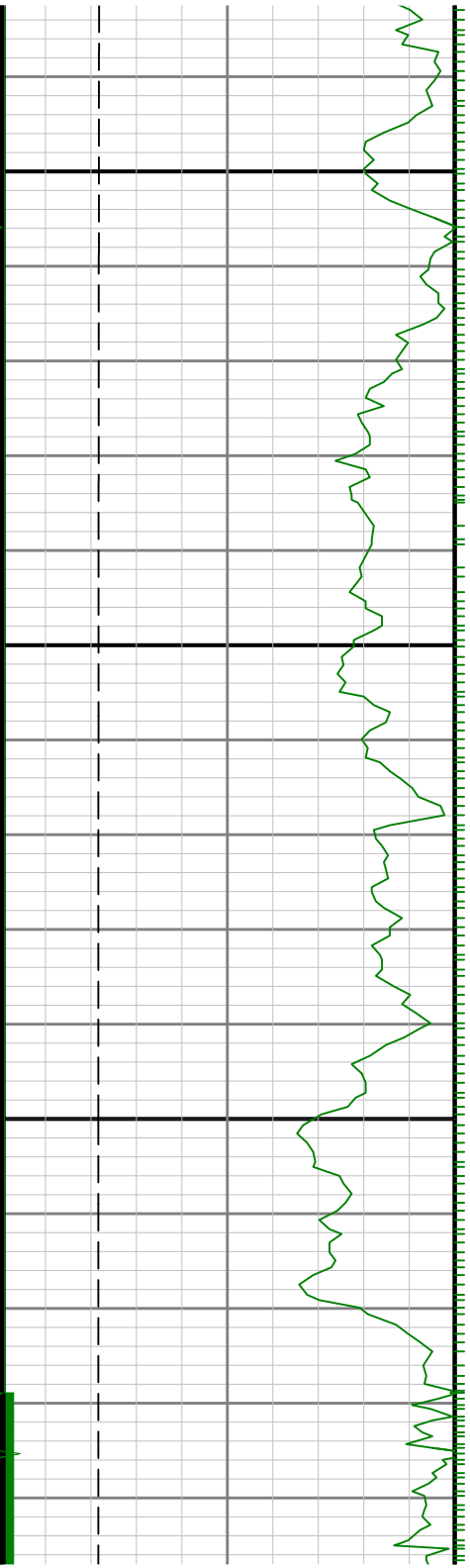


7900



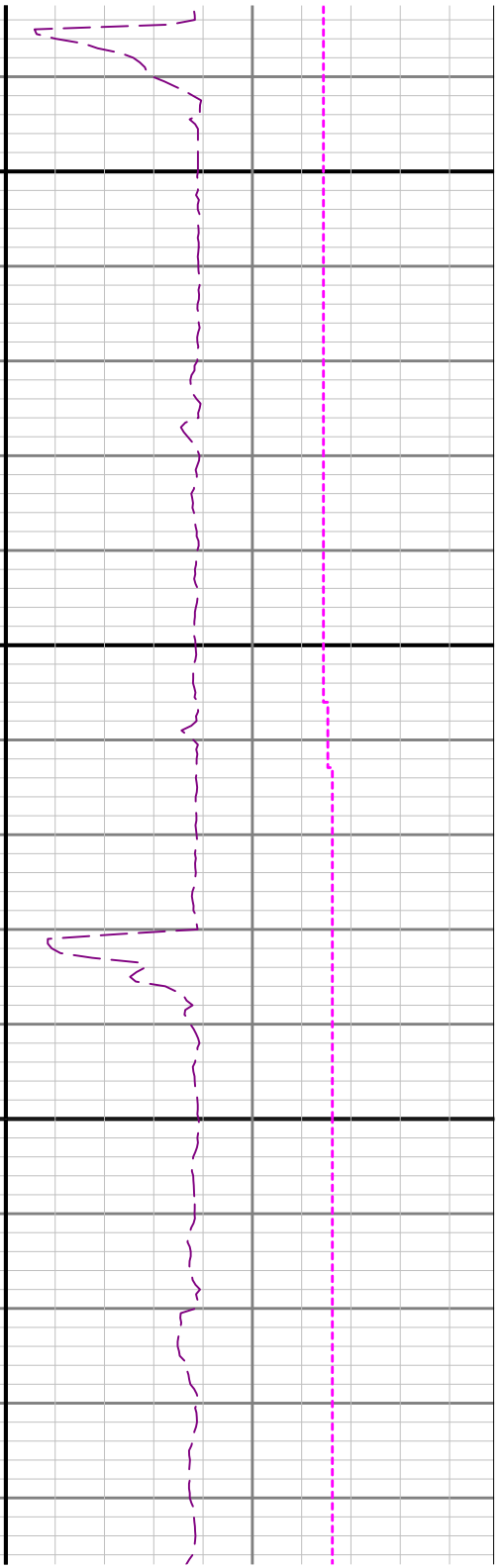
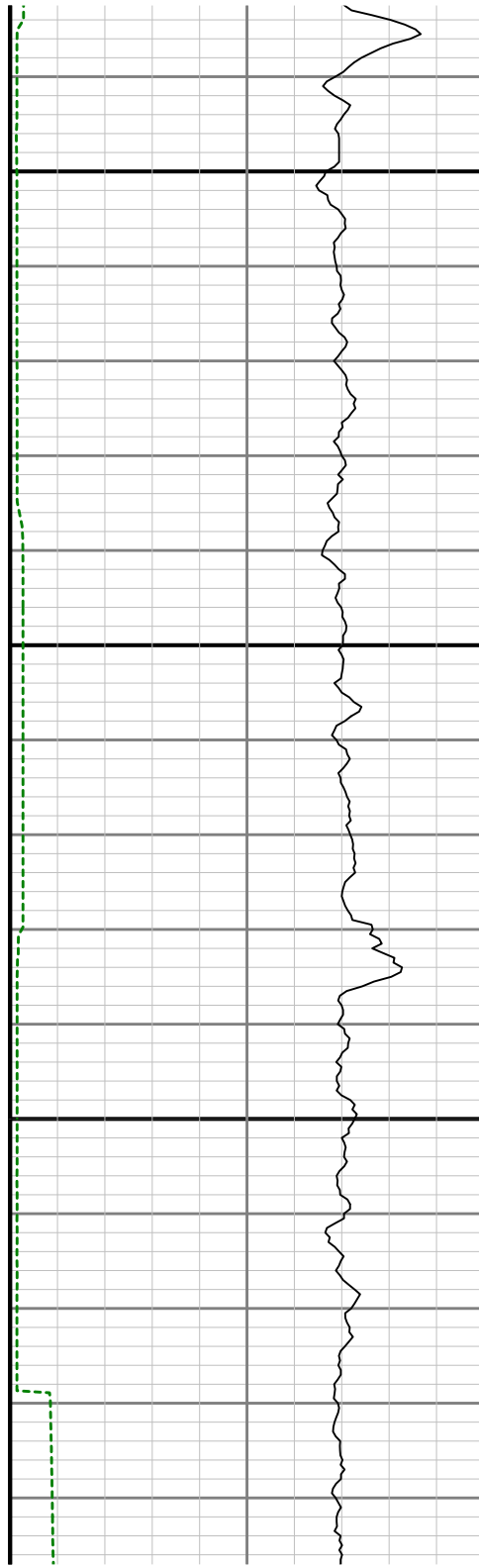


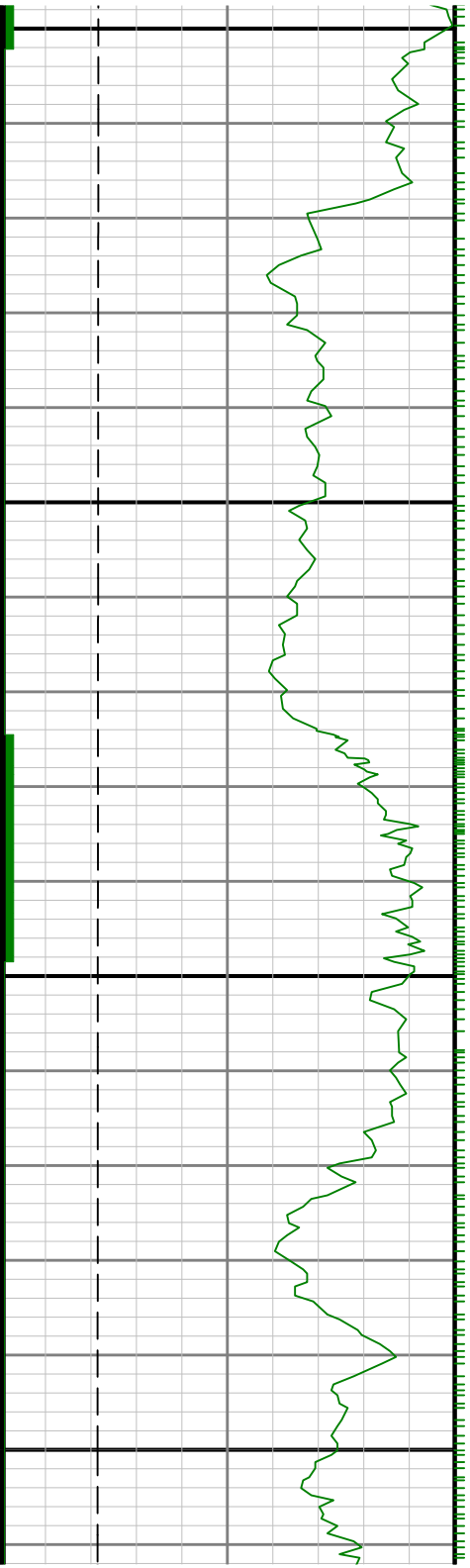




8500

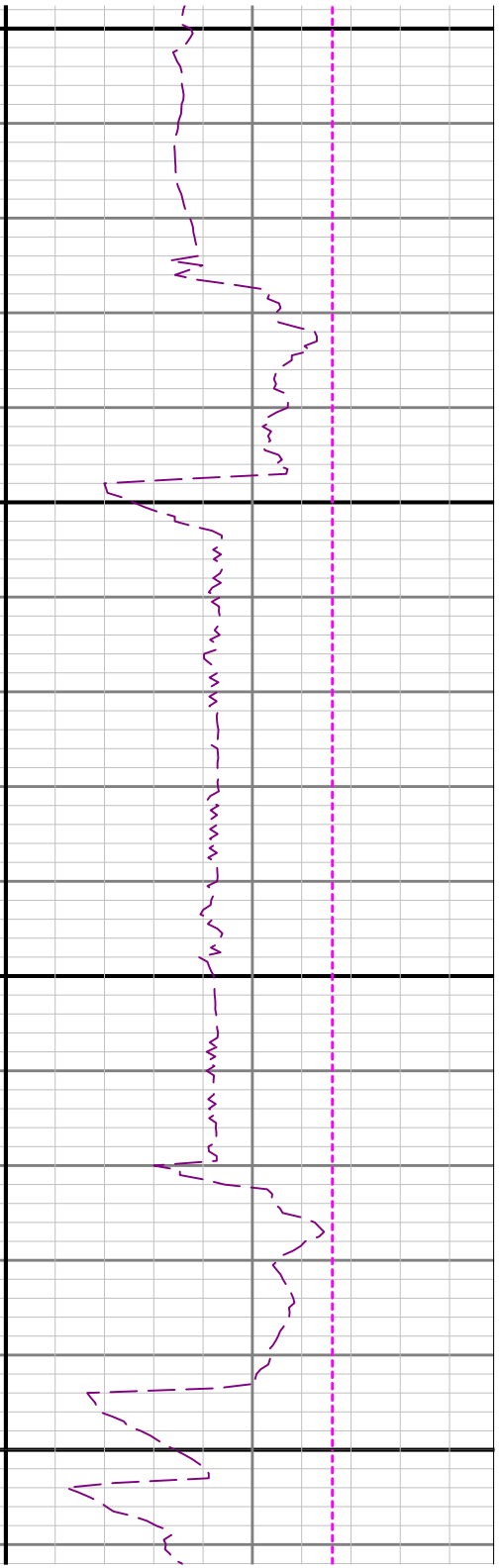
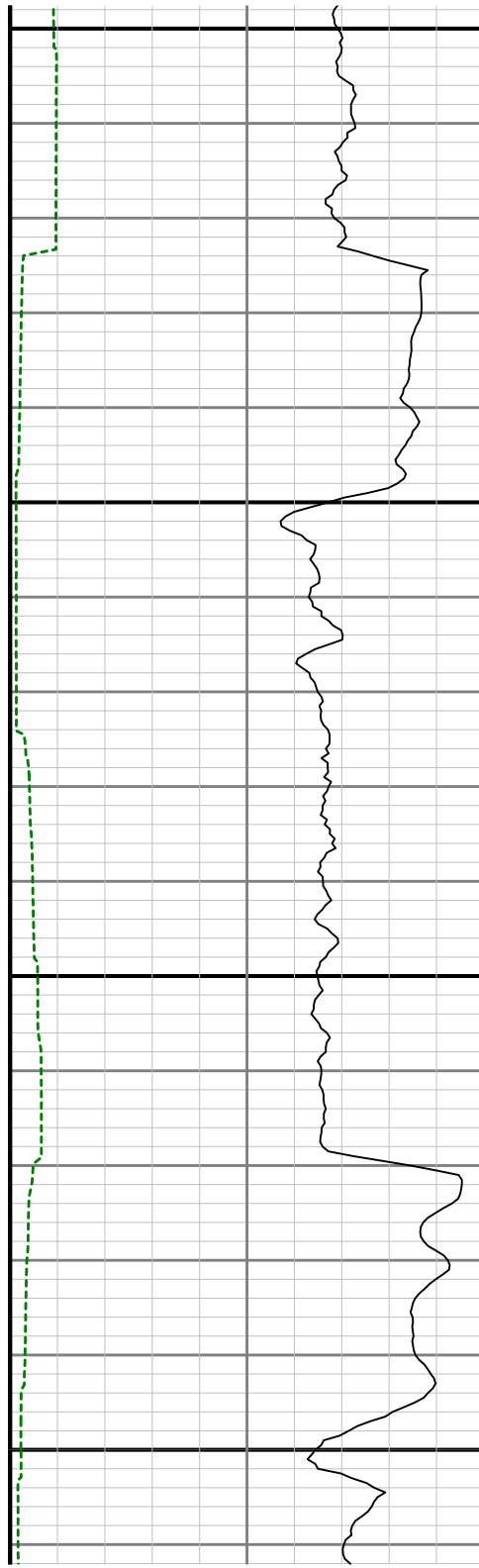
8600

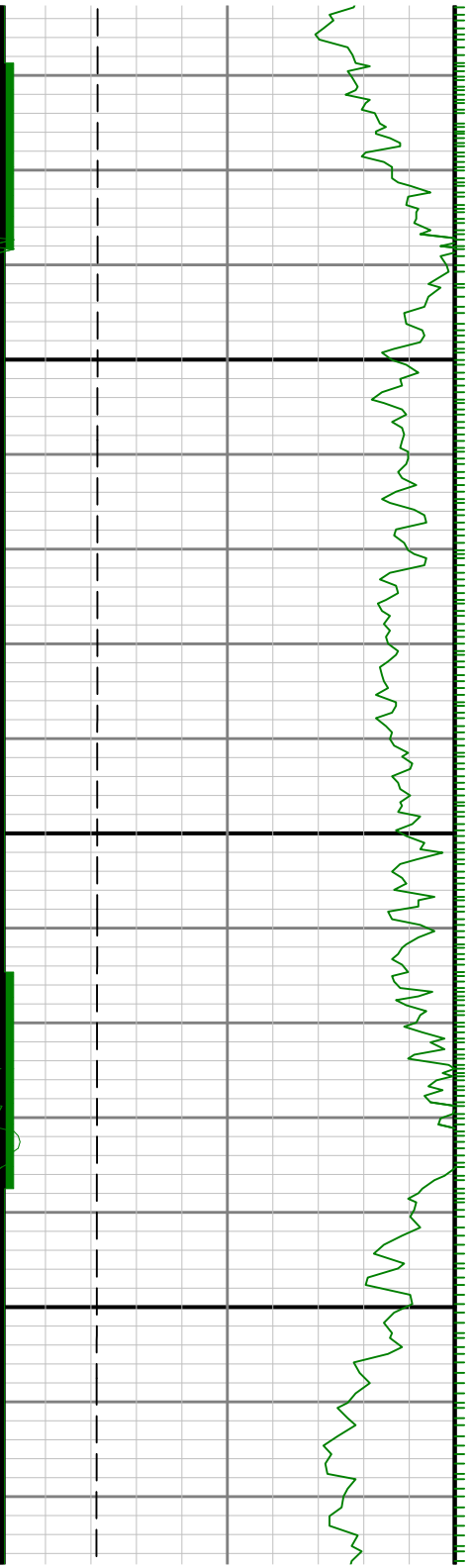




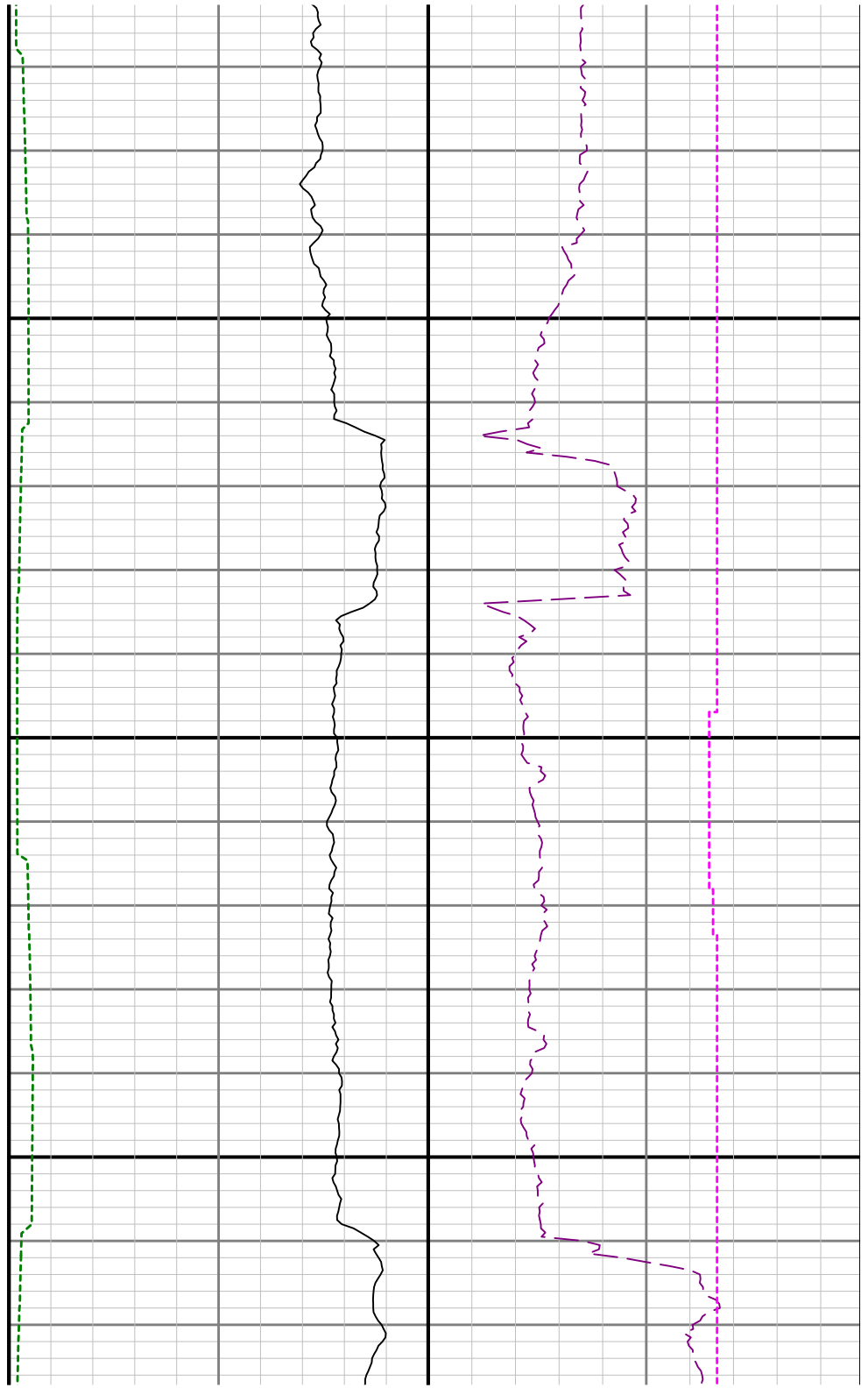
8700

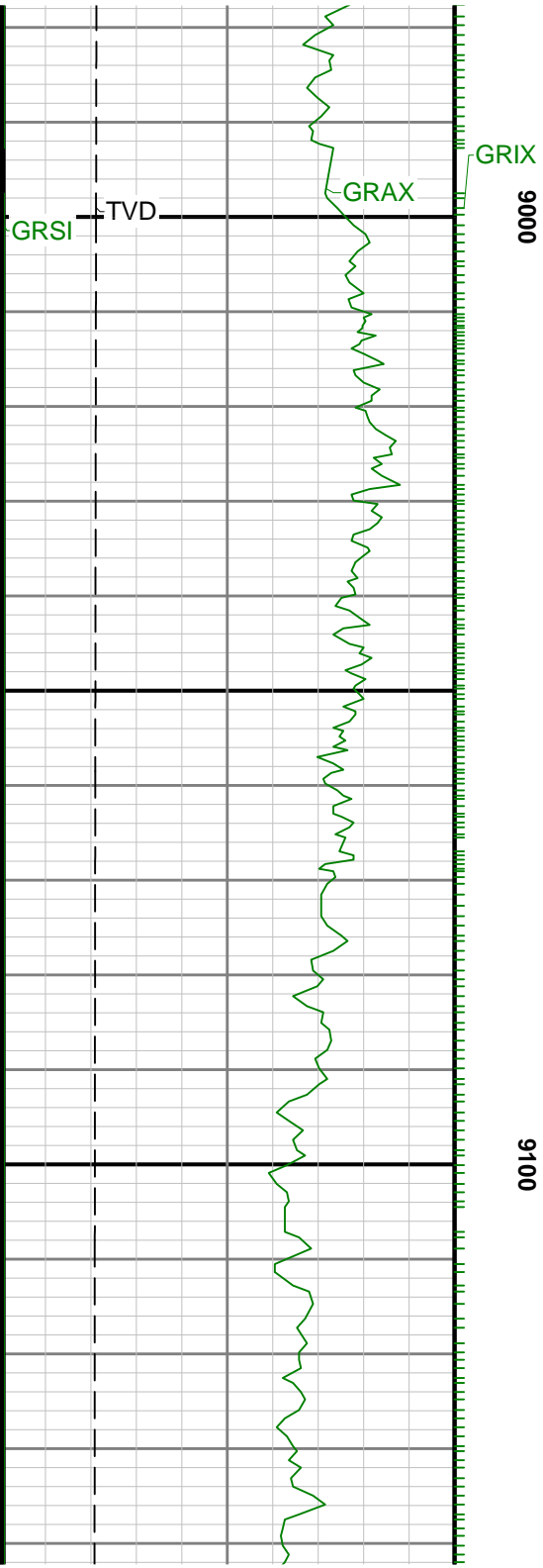
8800

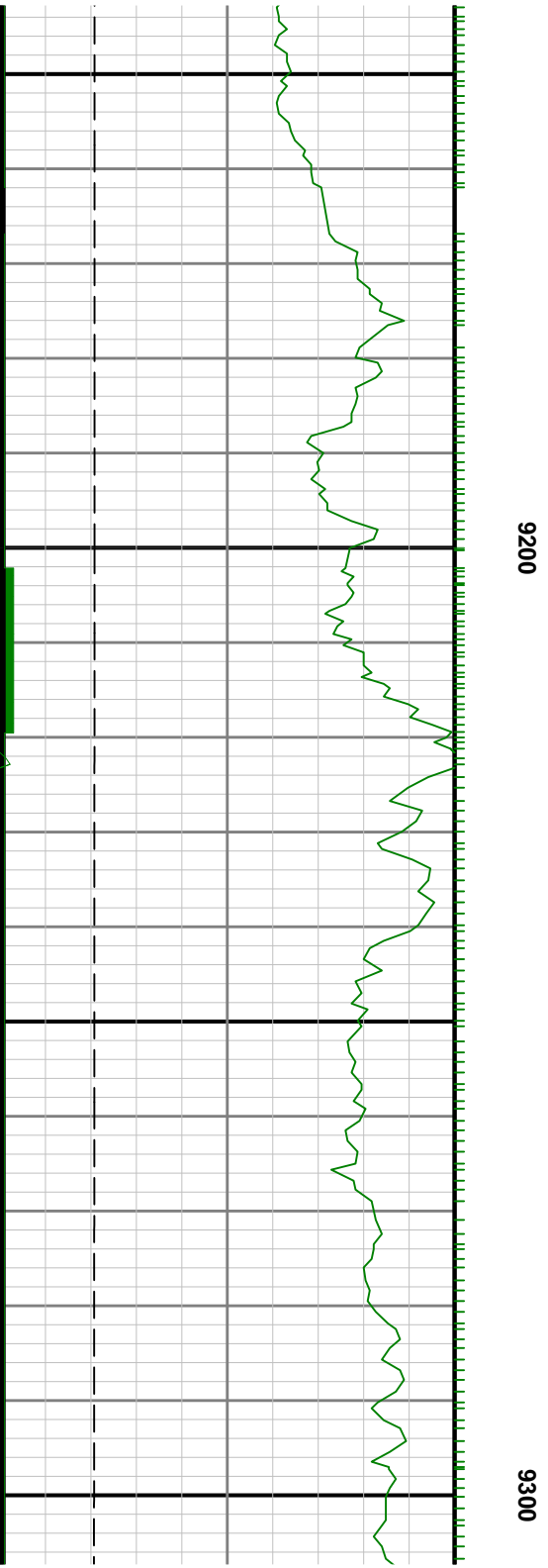
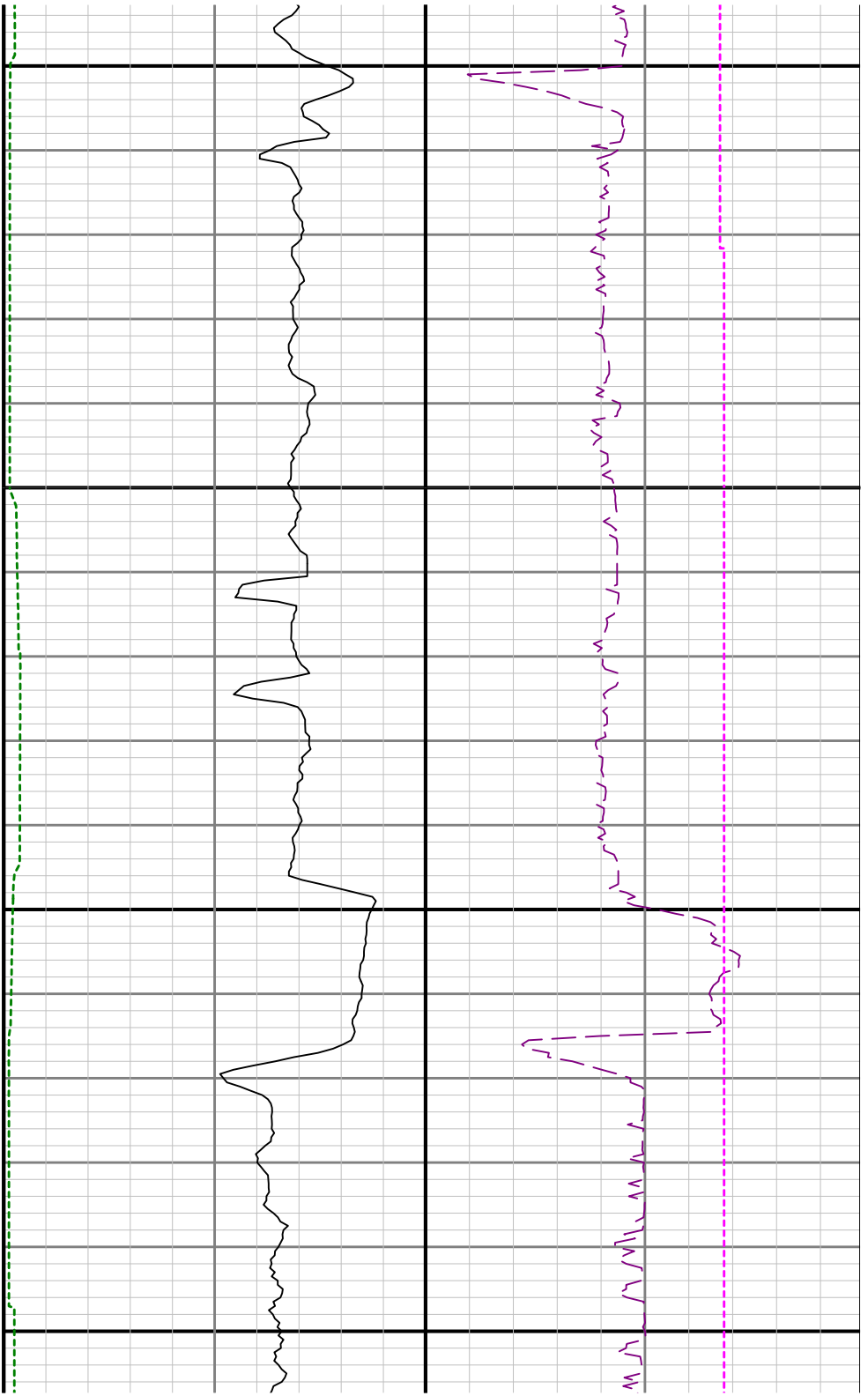


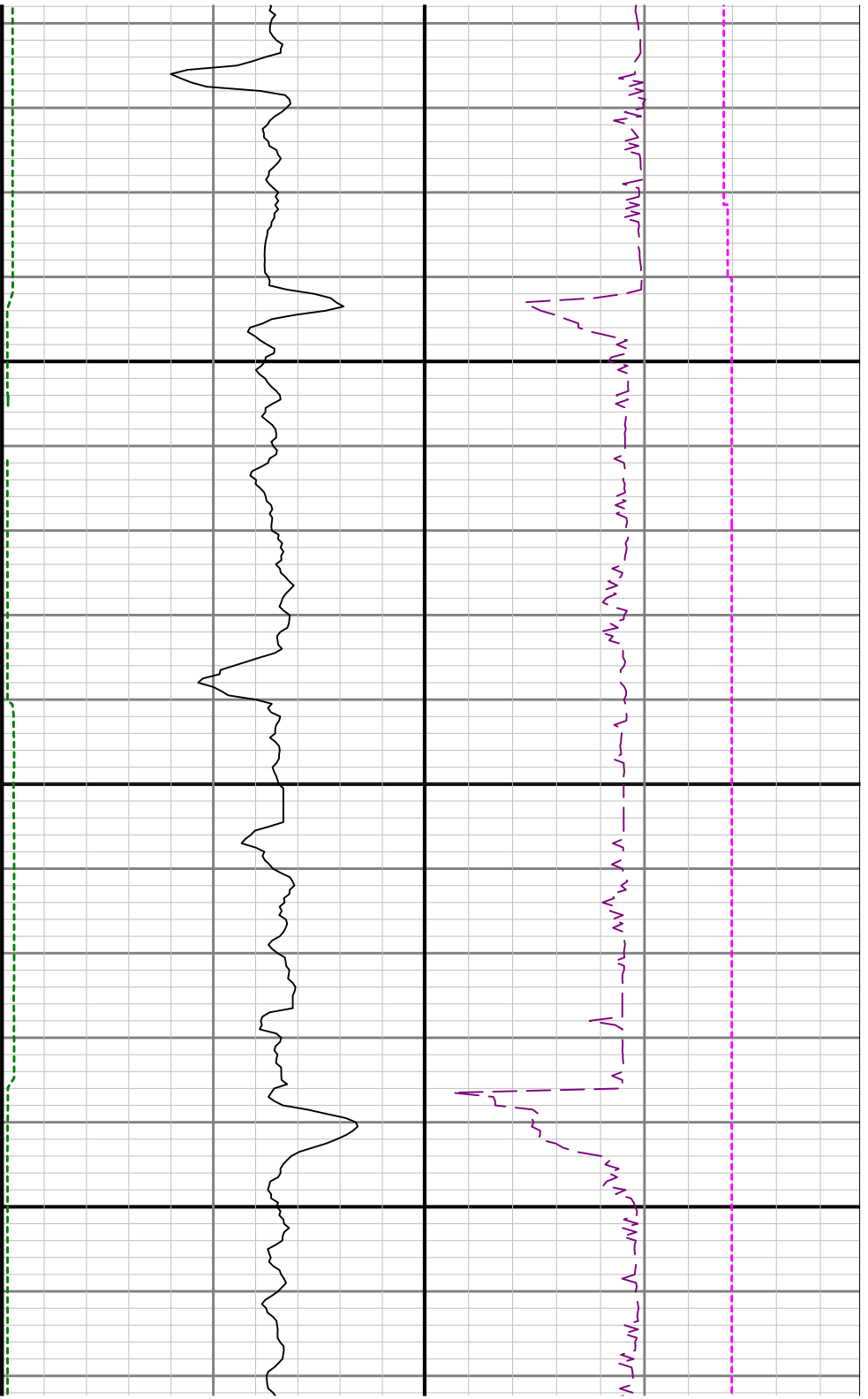


0068

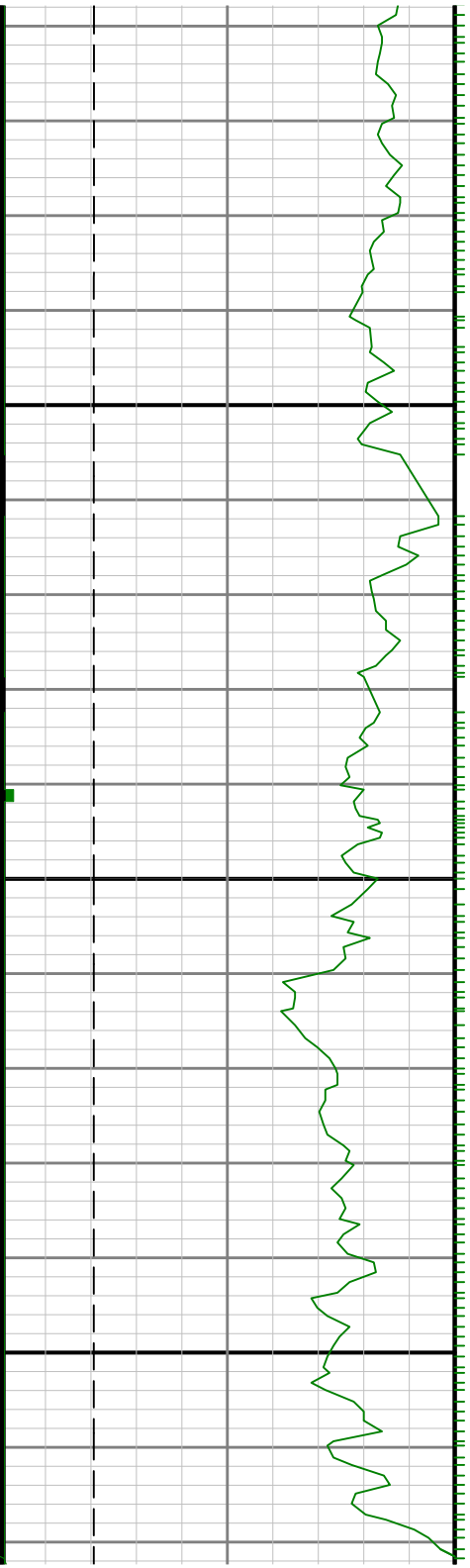


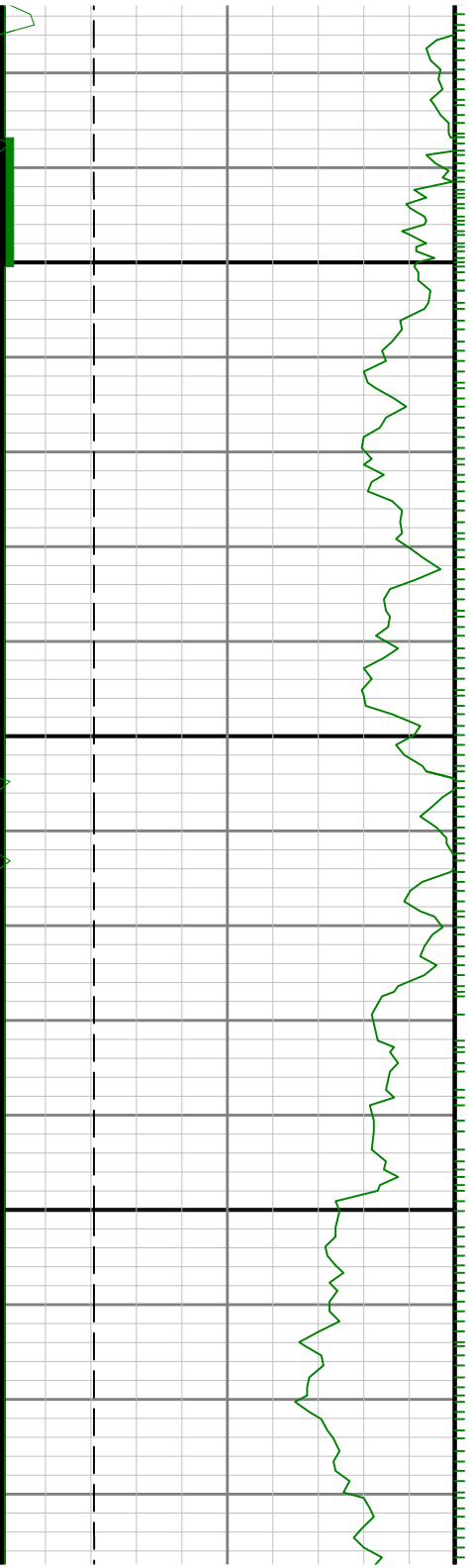






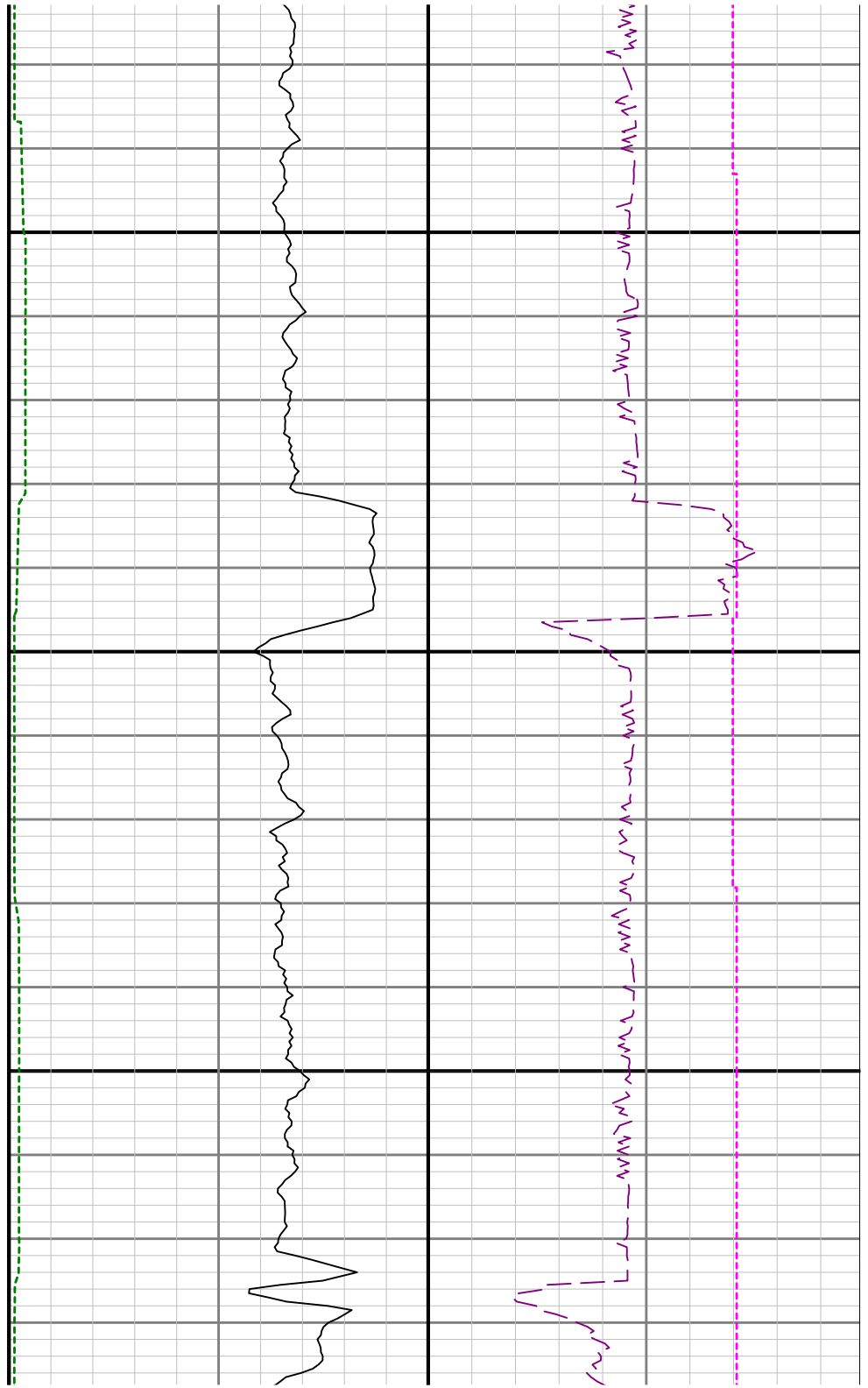
9400

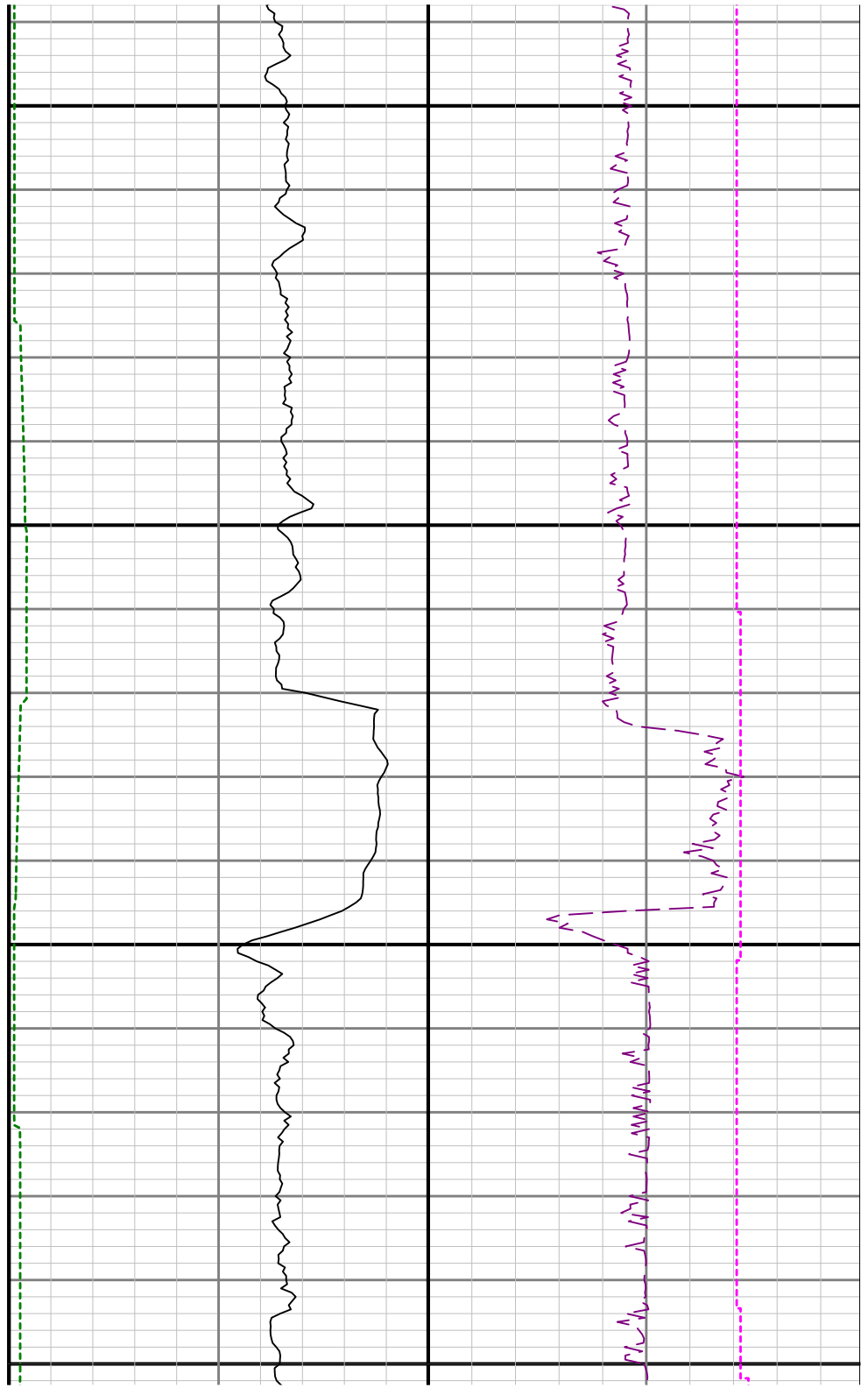
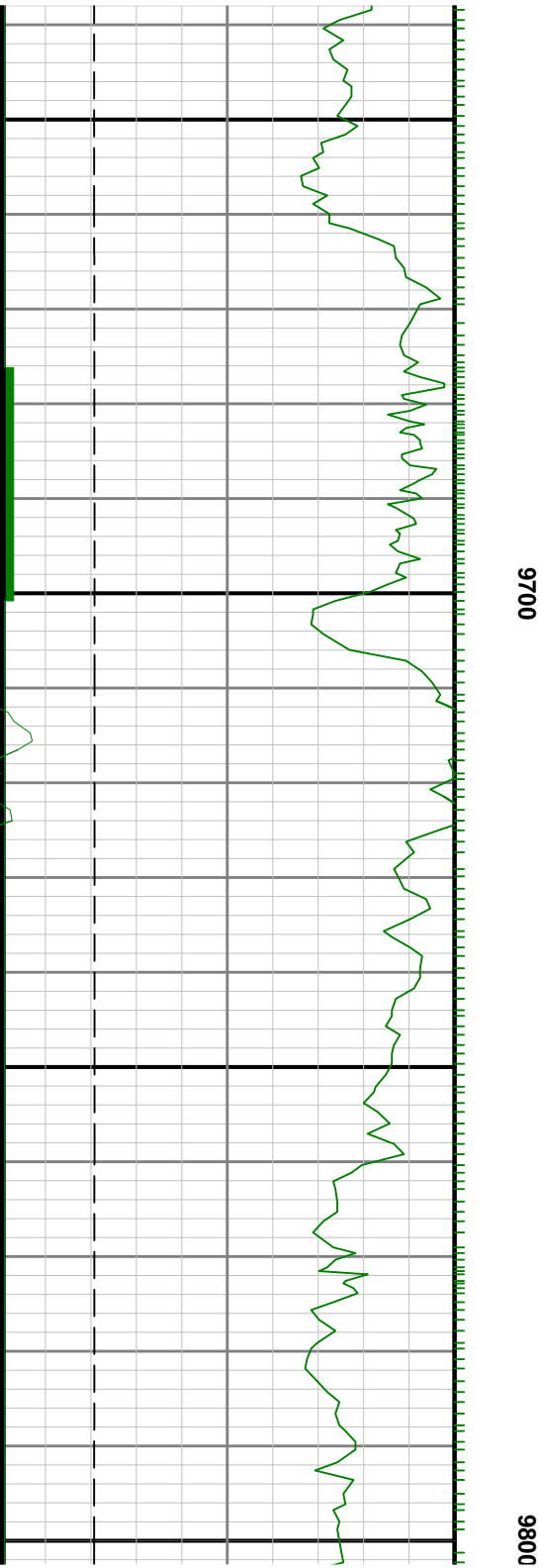


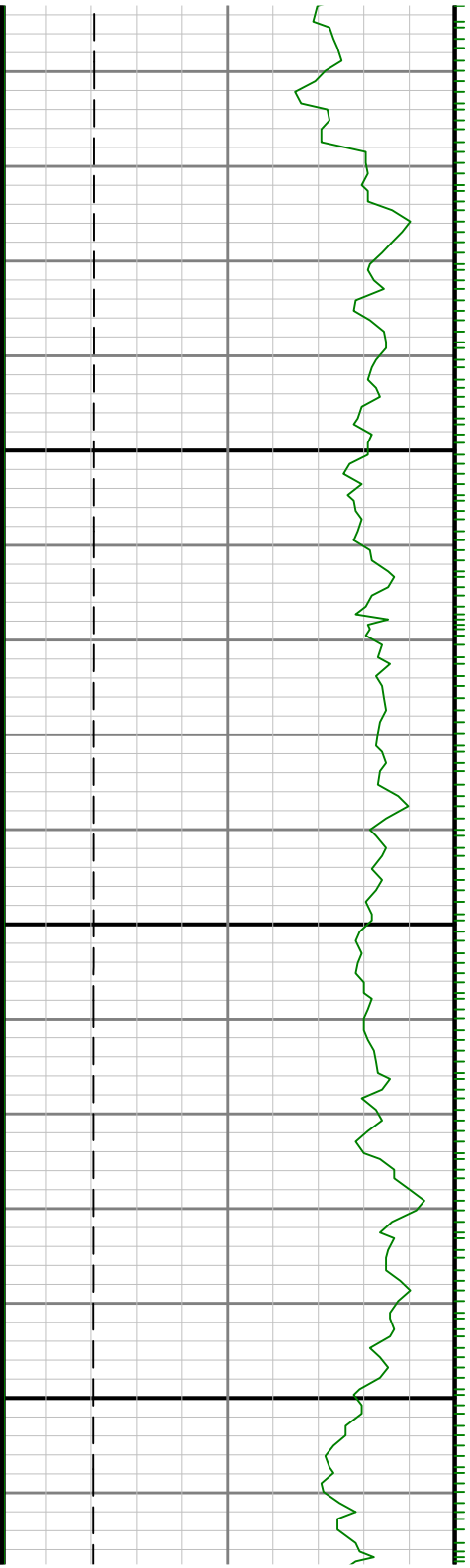


9500

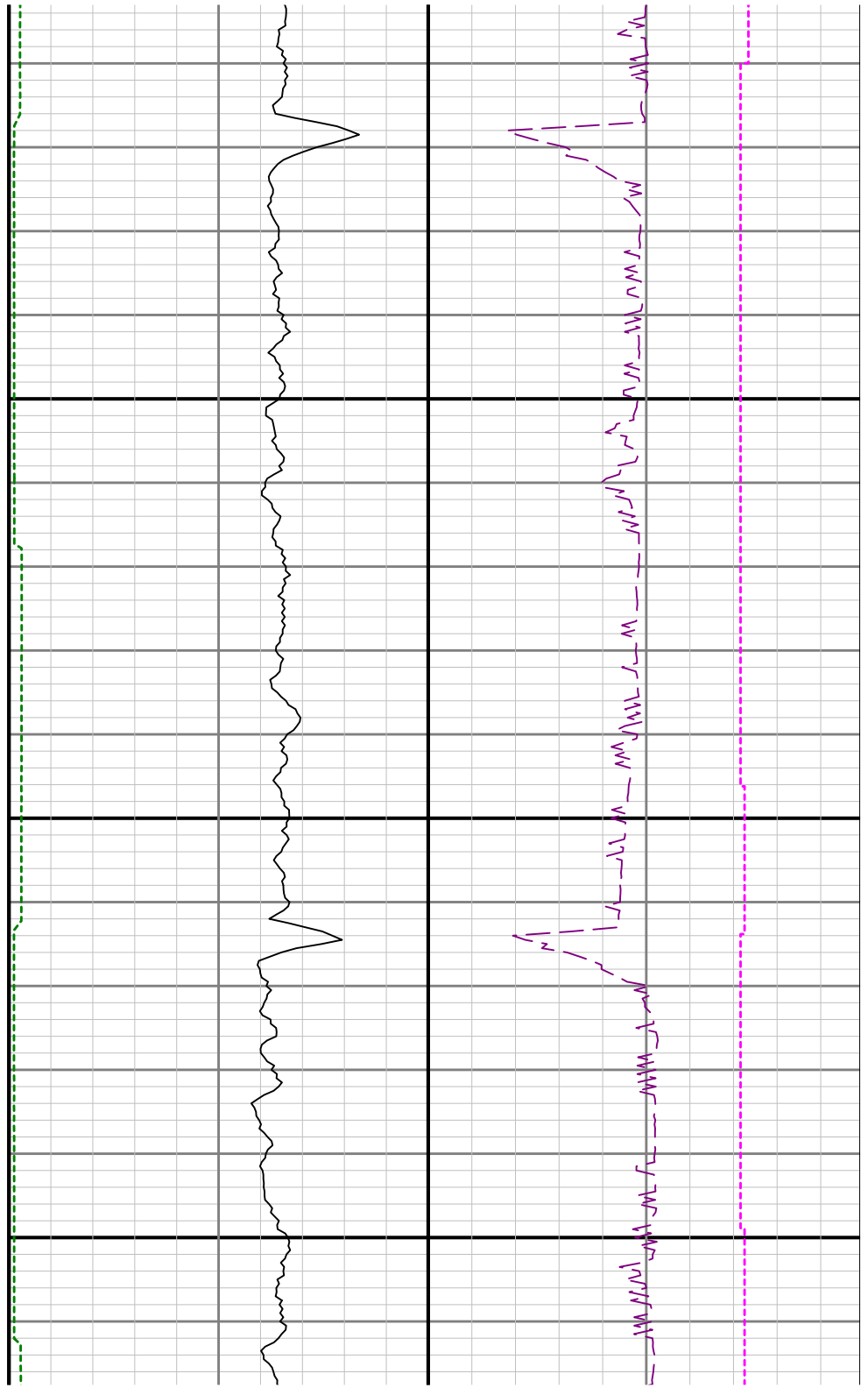
9000

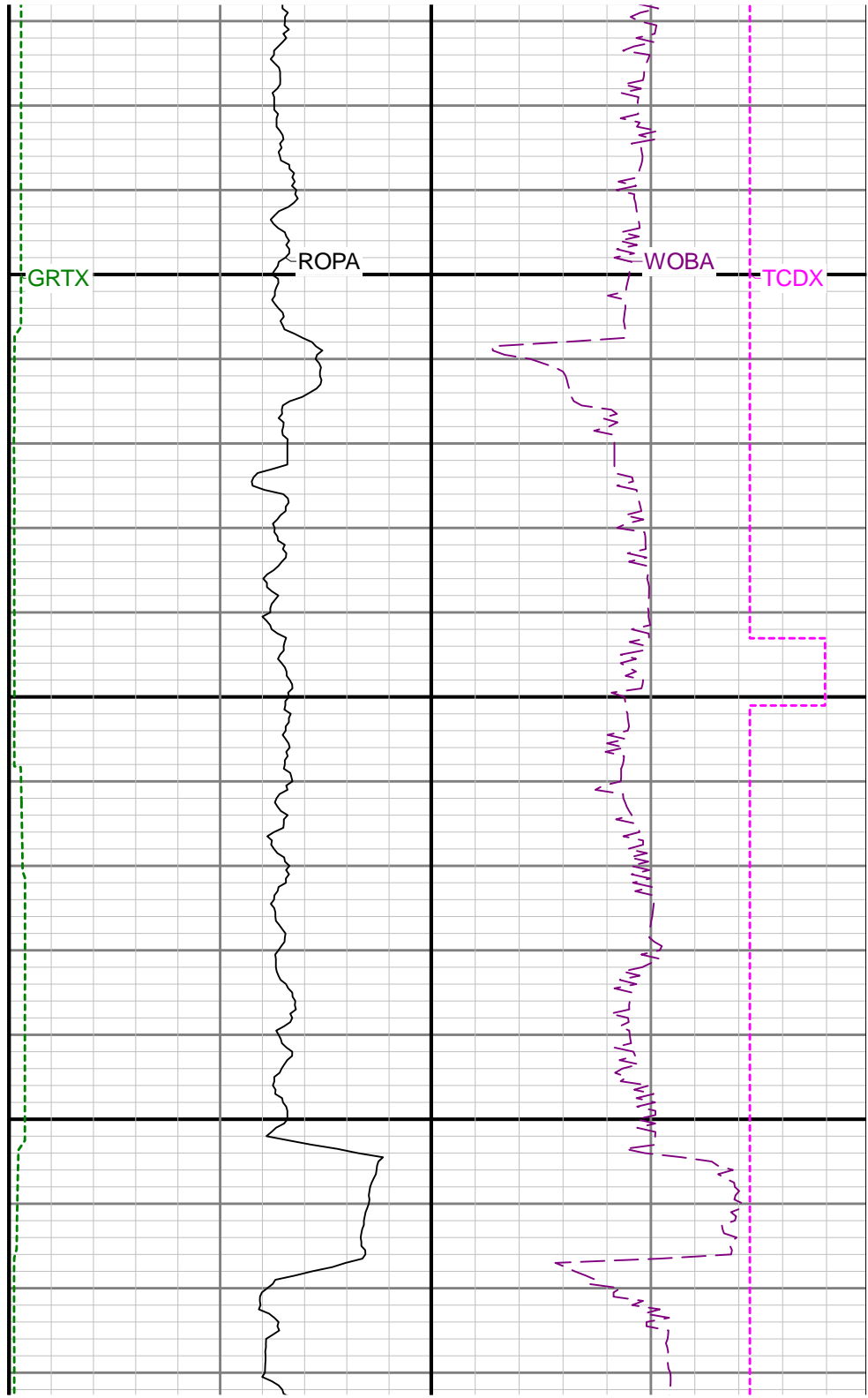


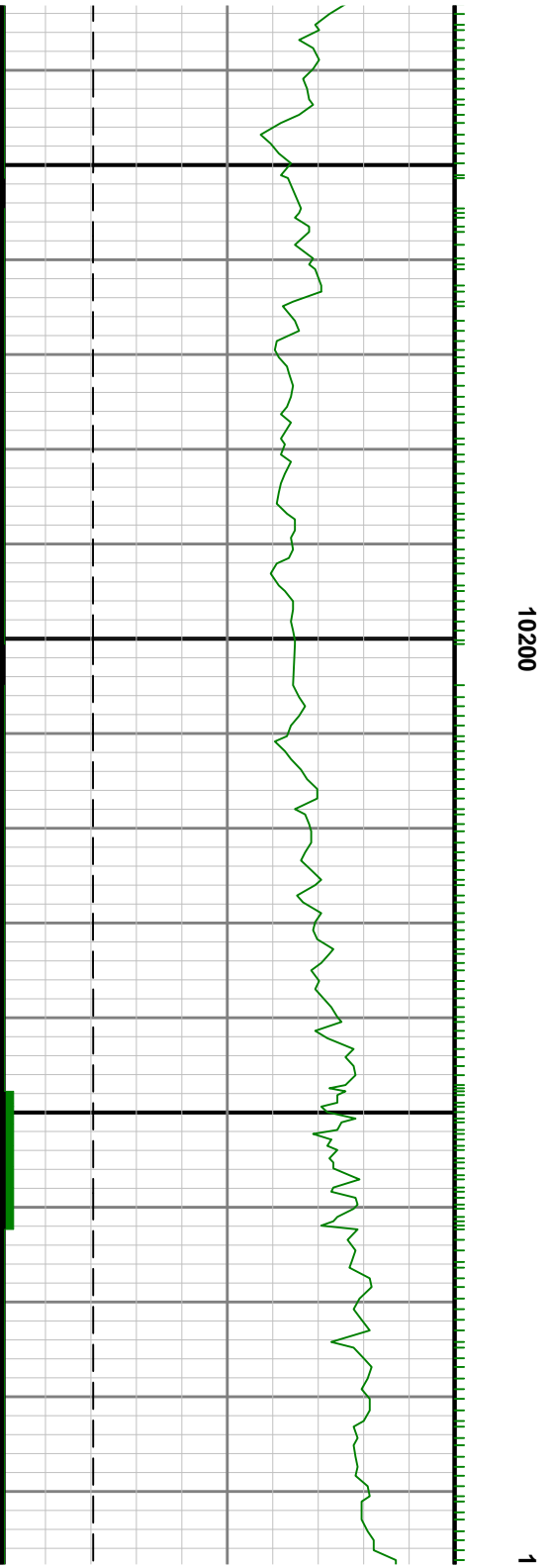
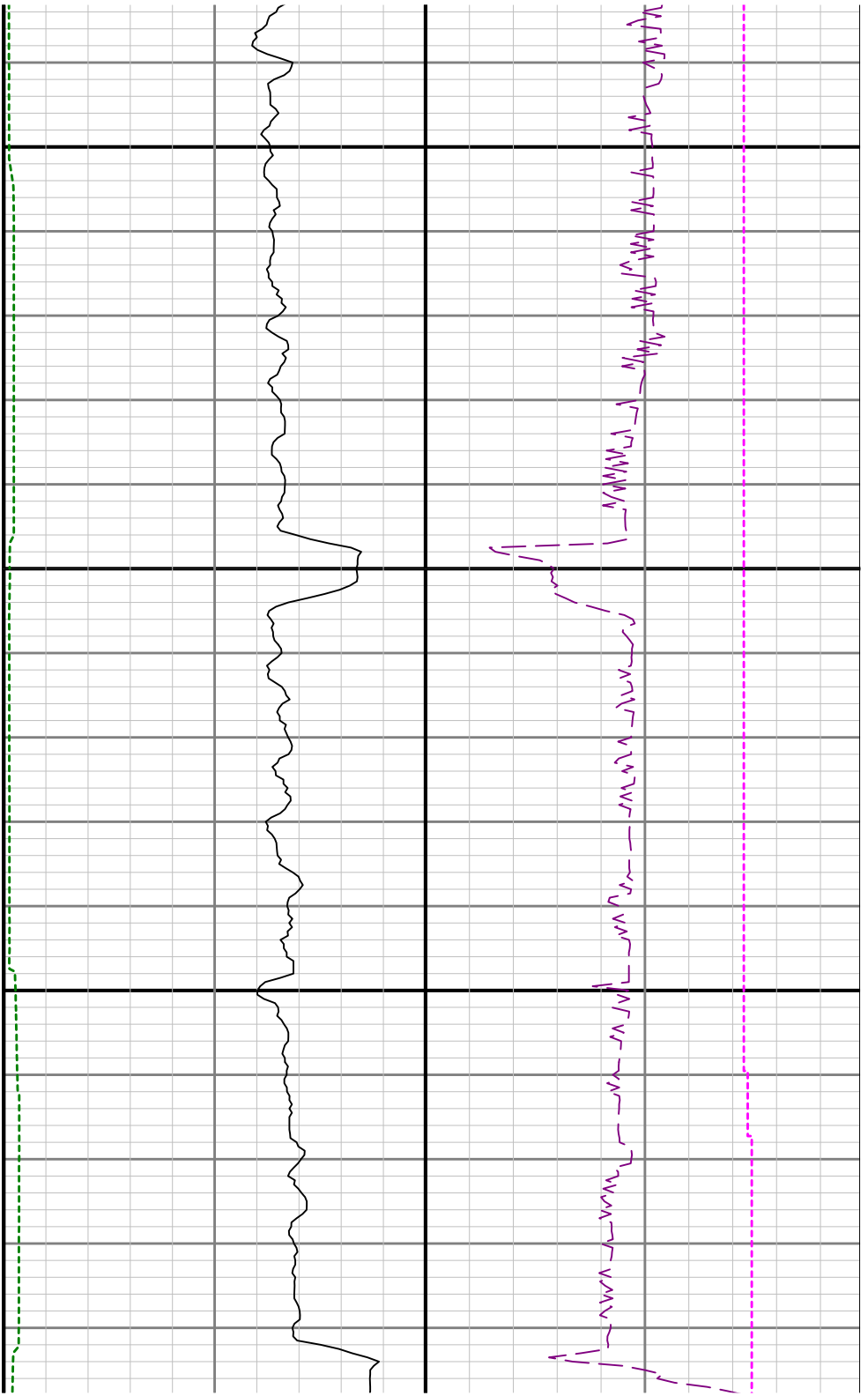


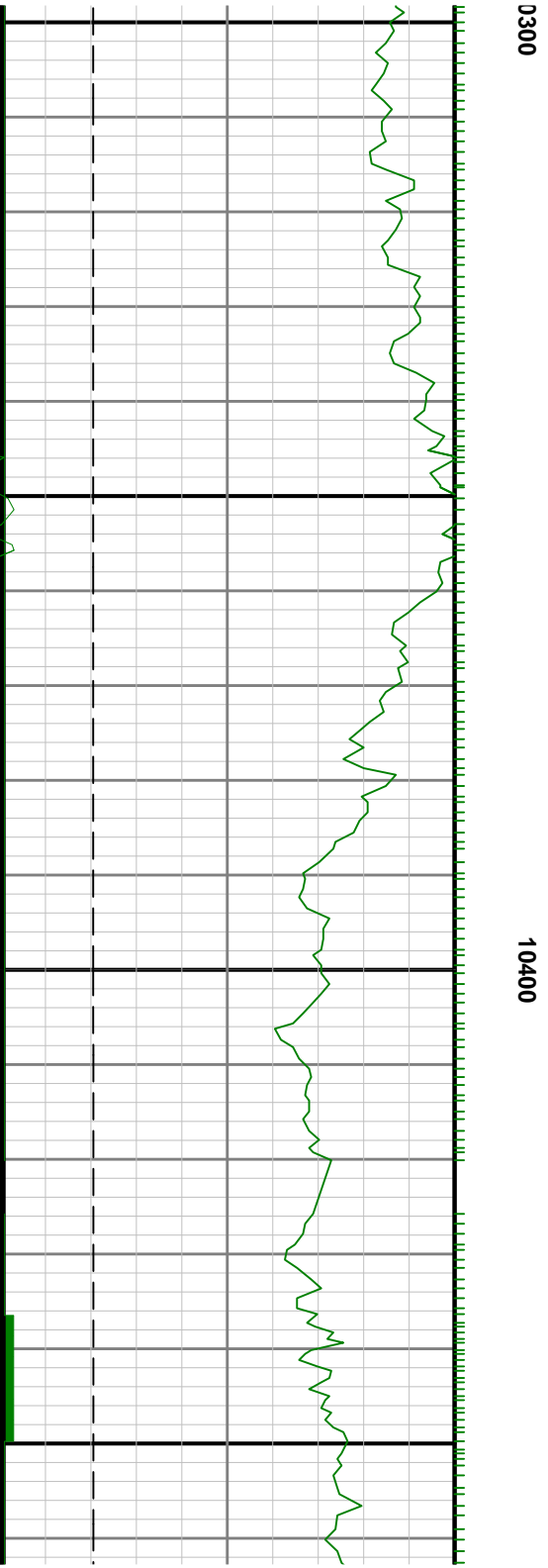
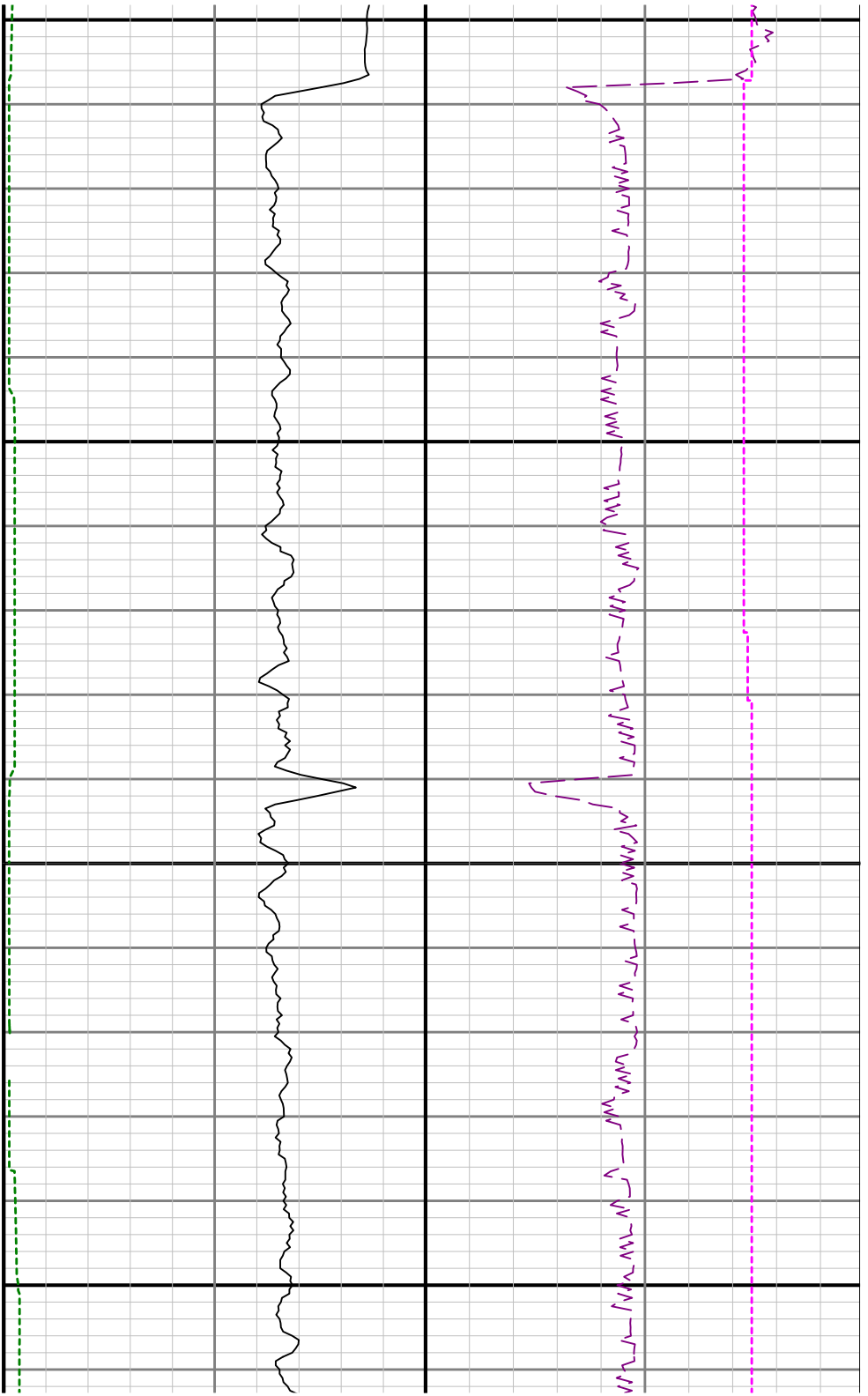


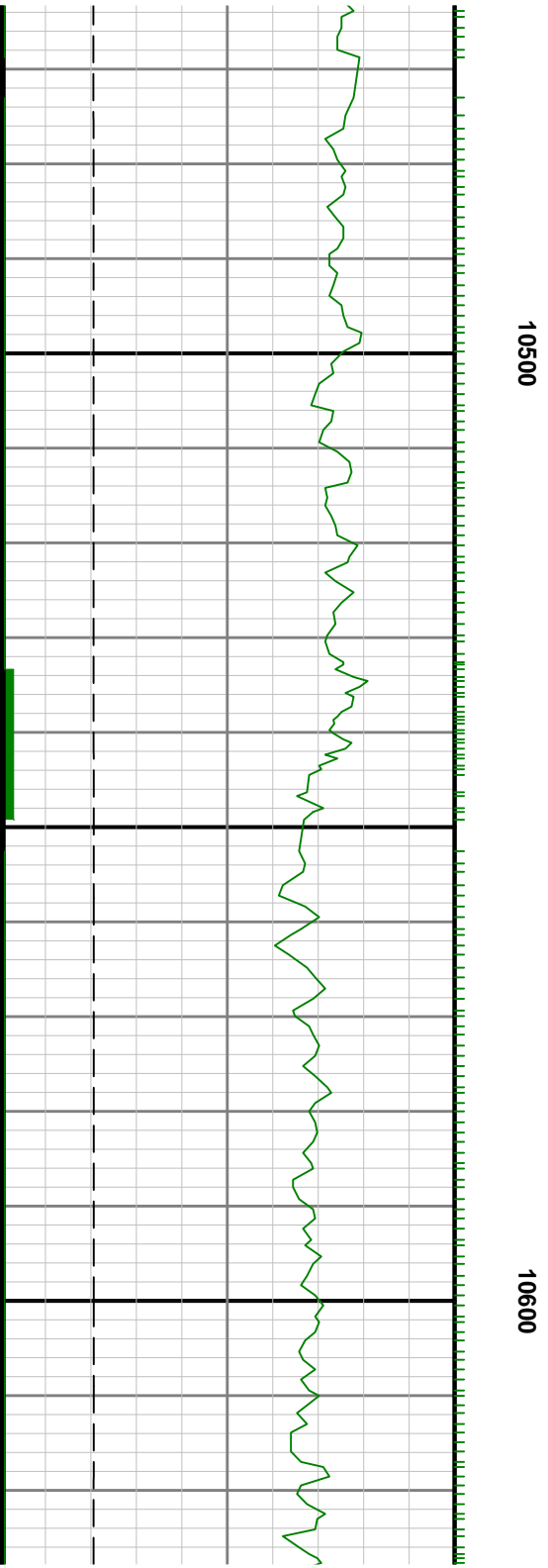
0066

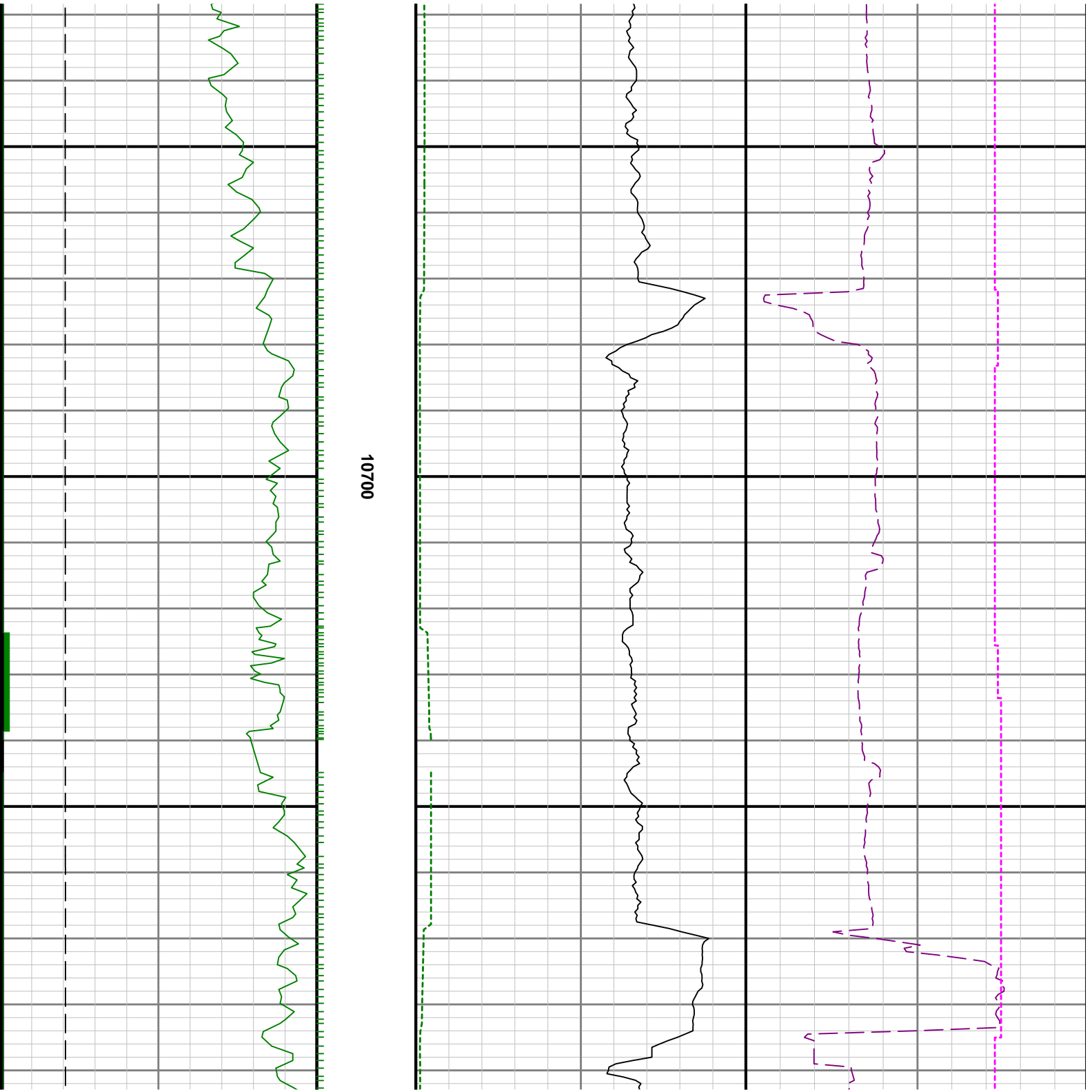


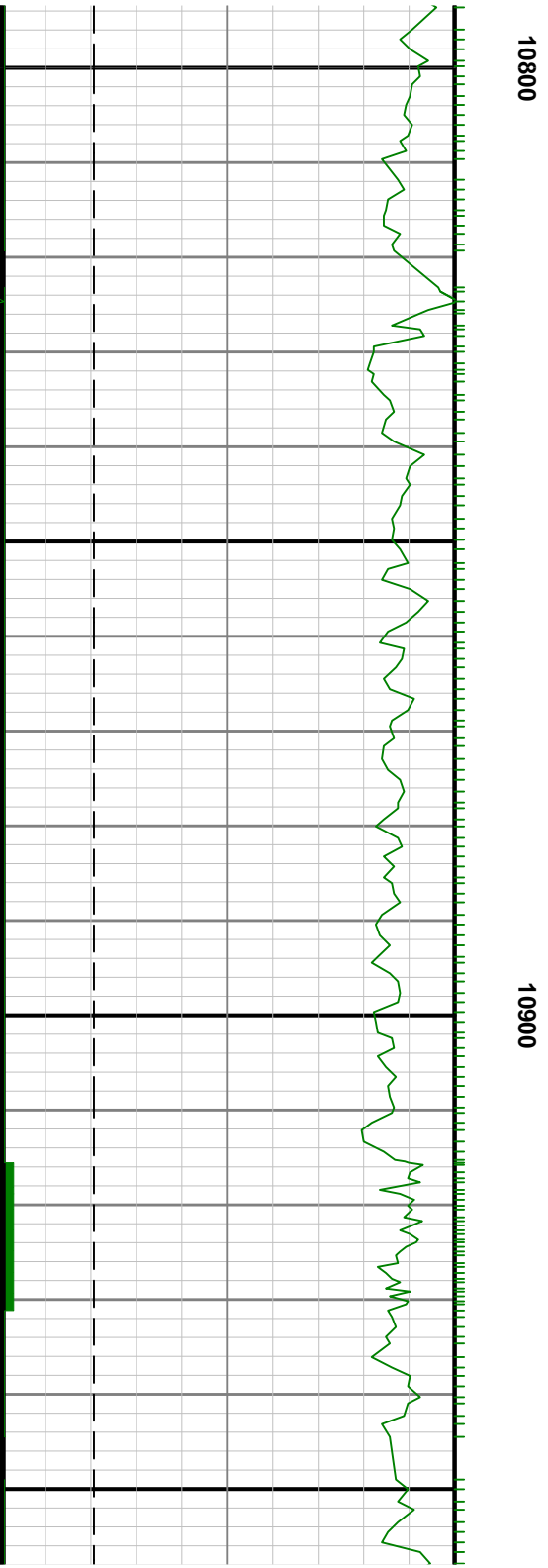
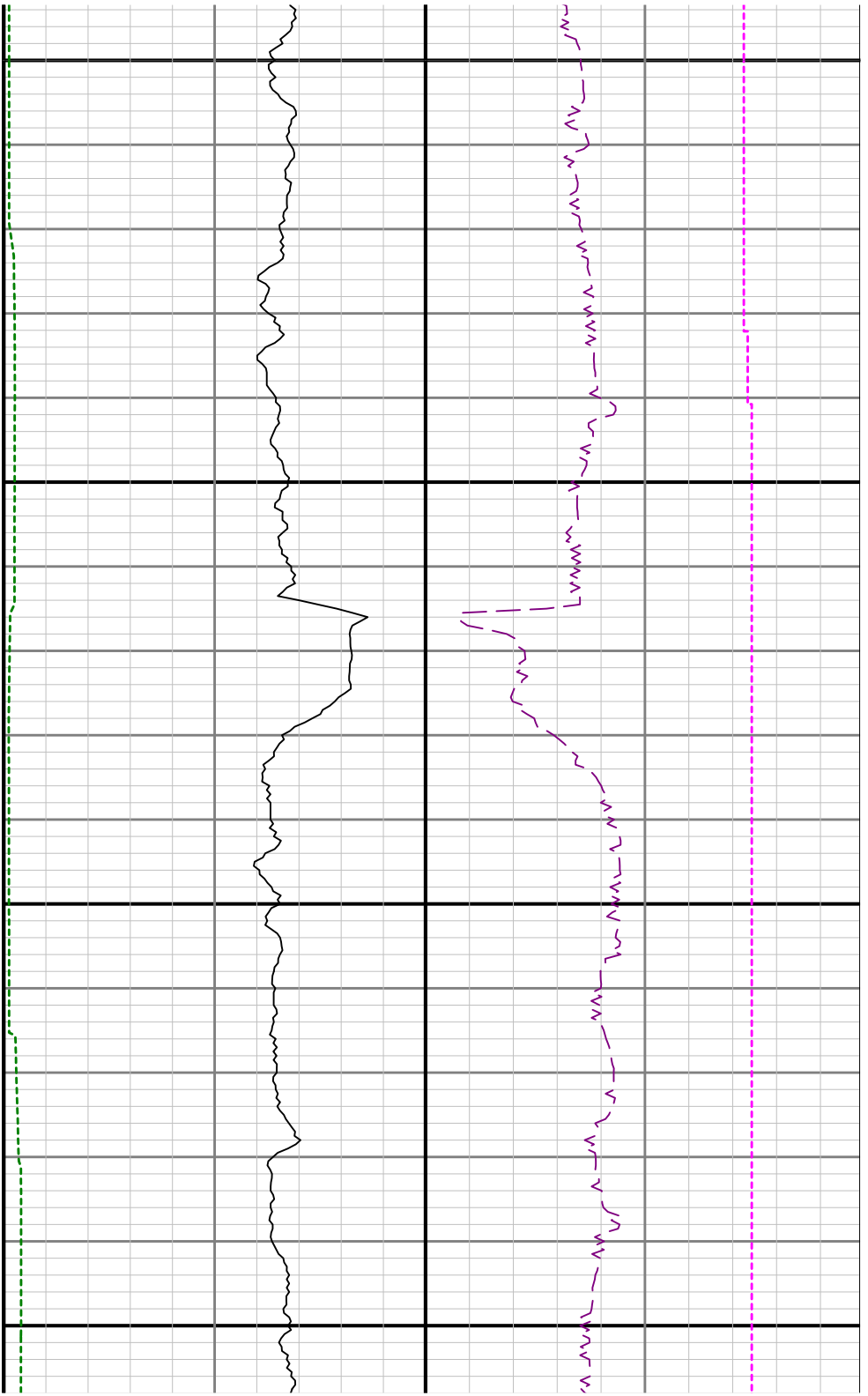


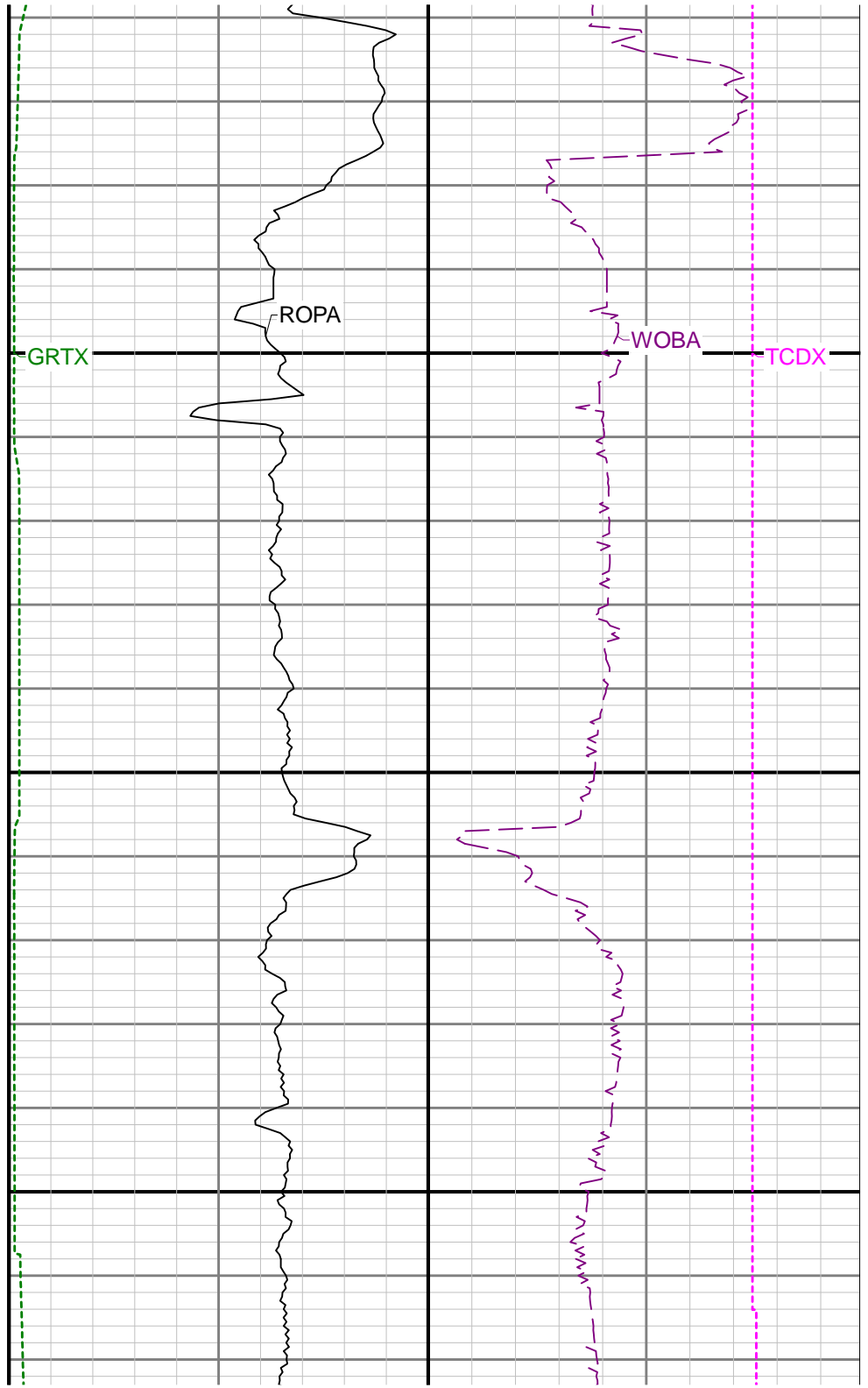
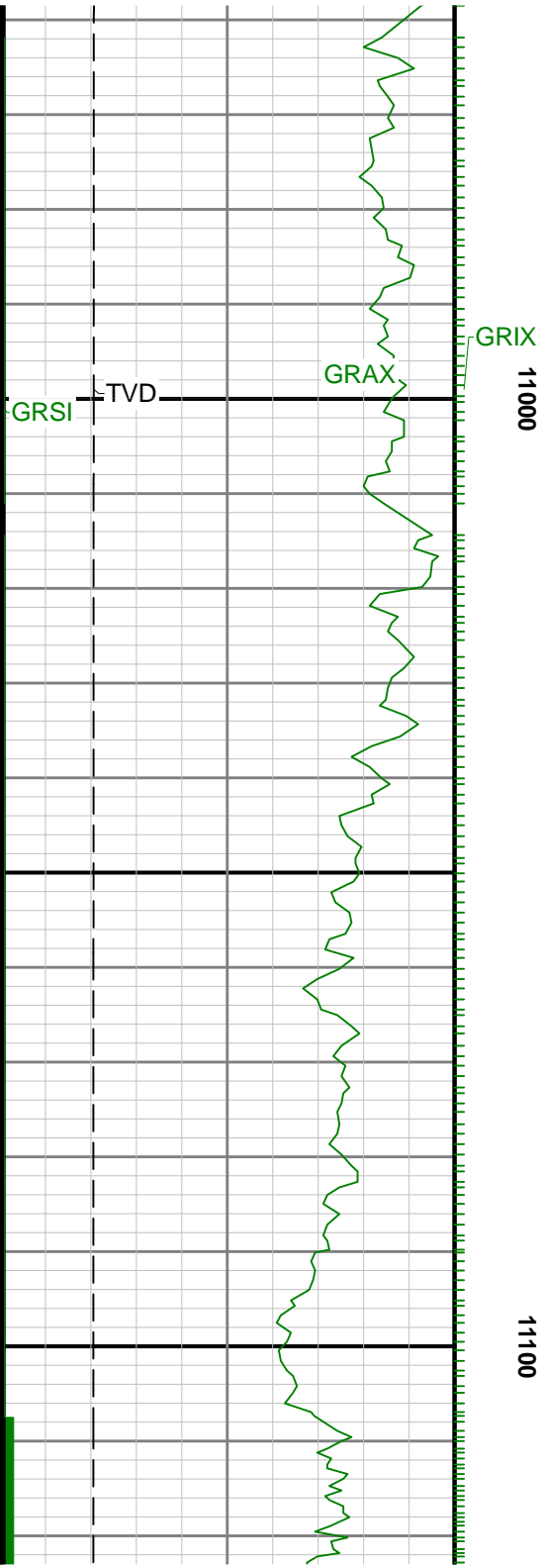


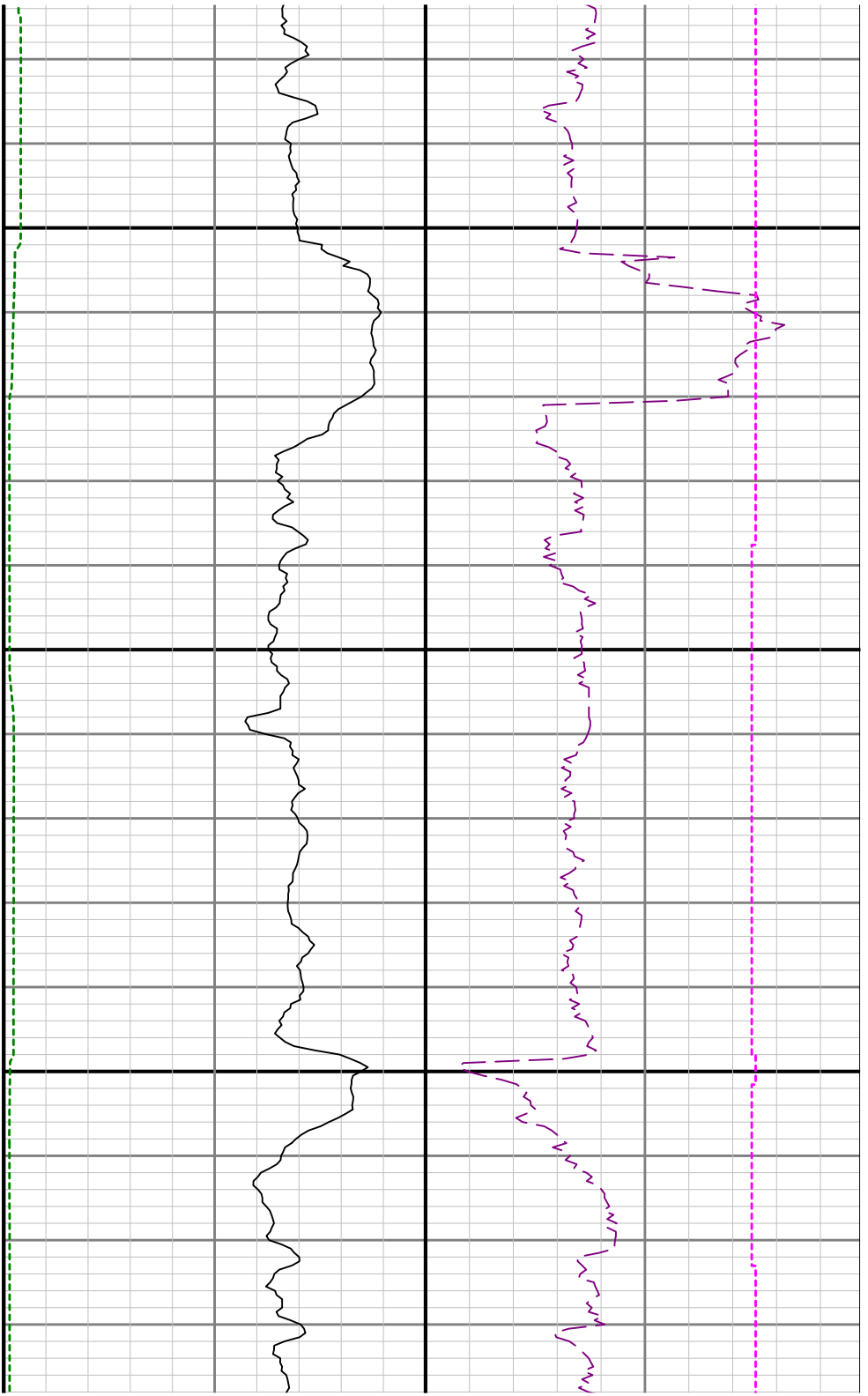




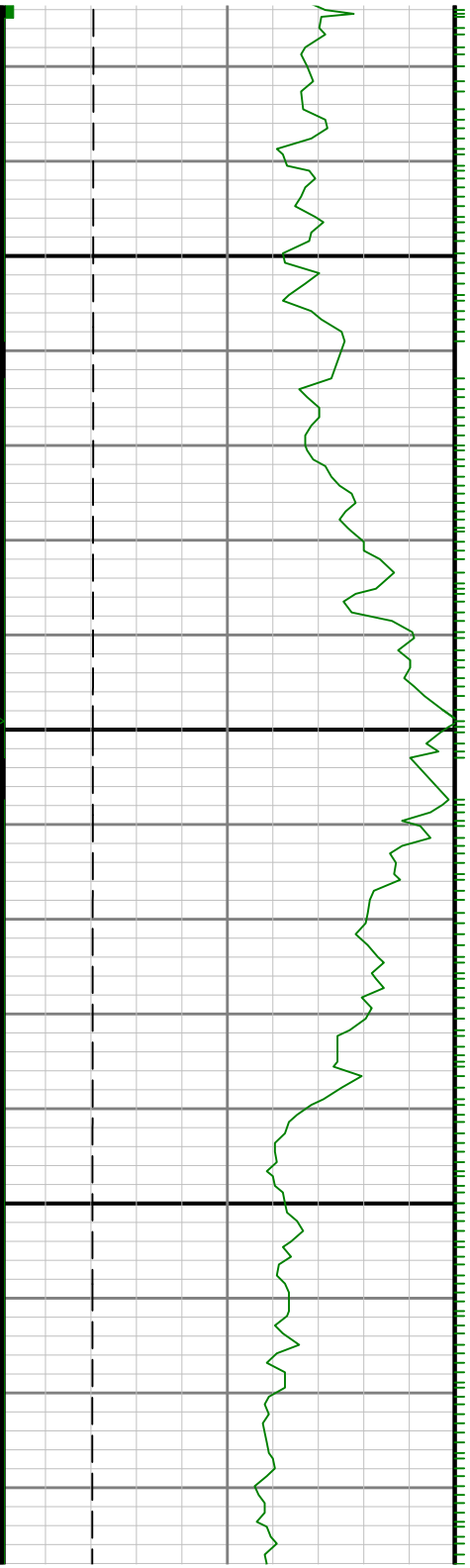


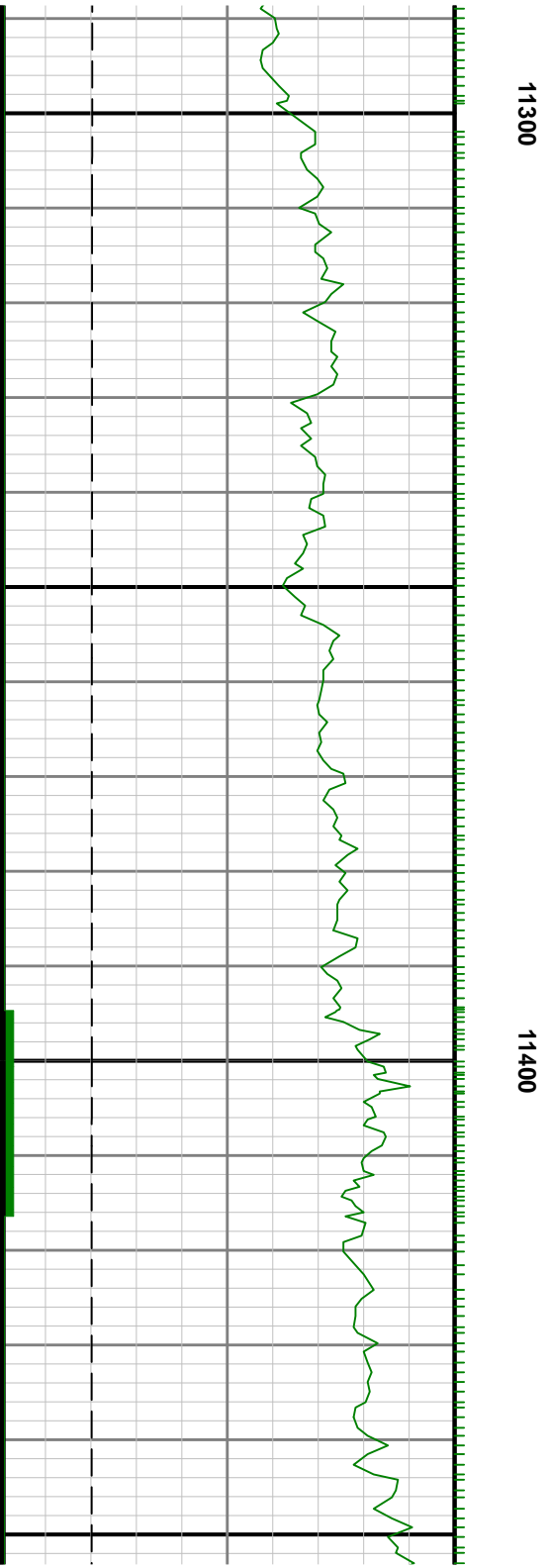
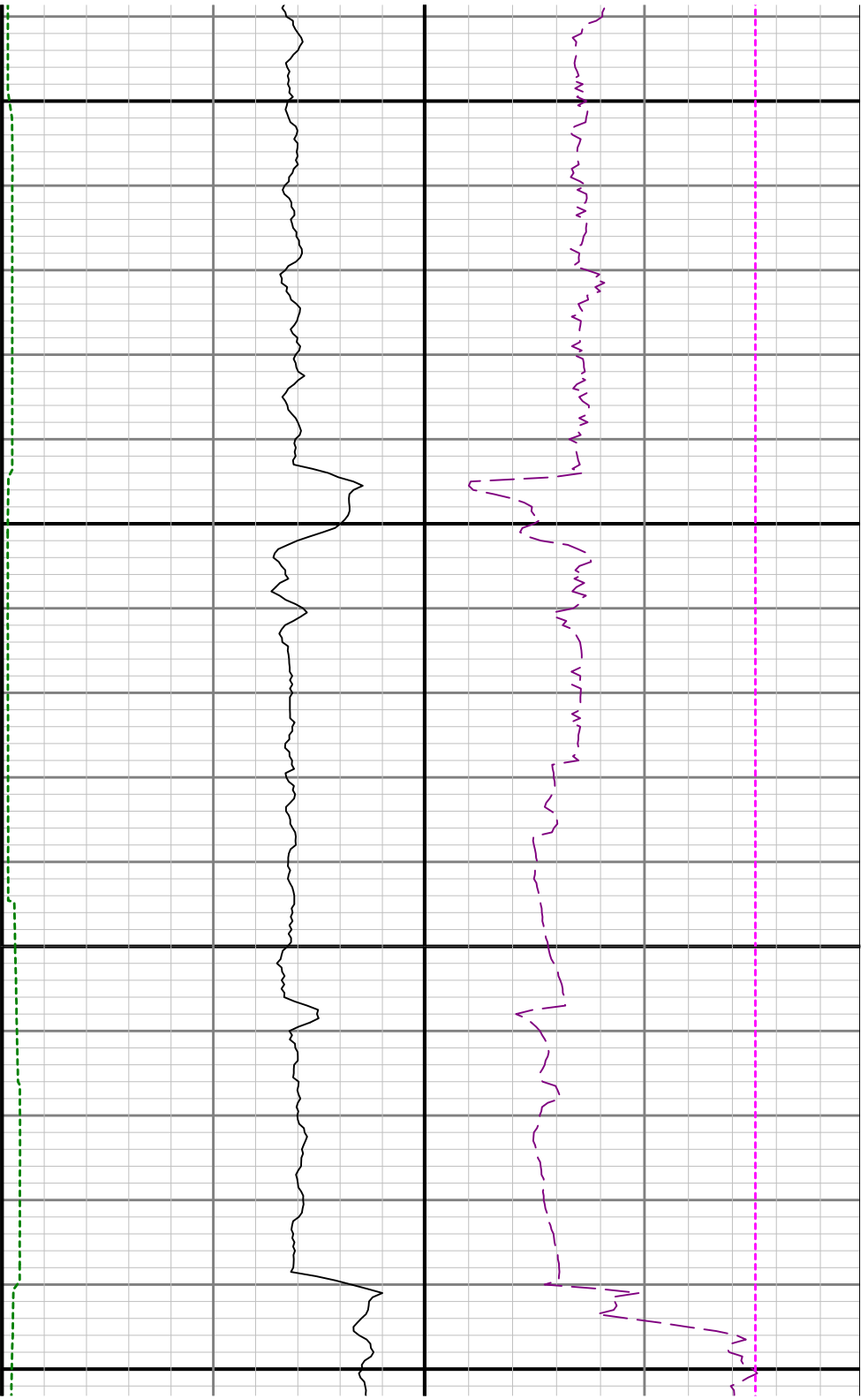


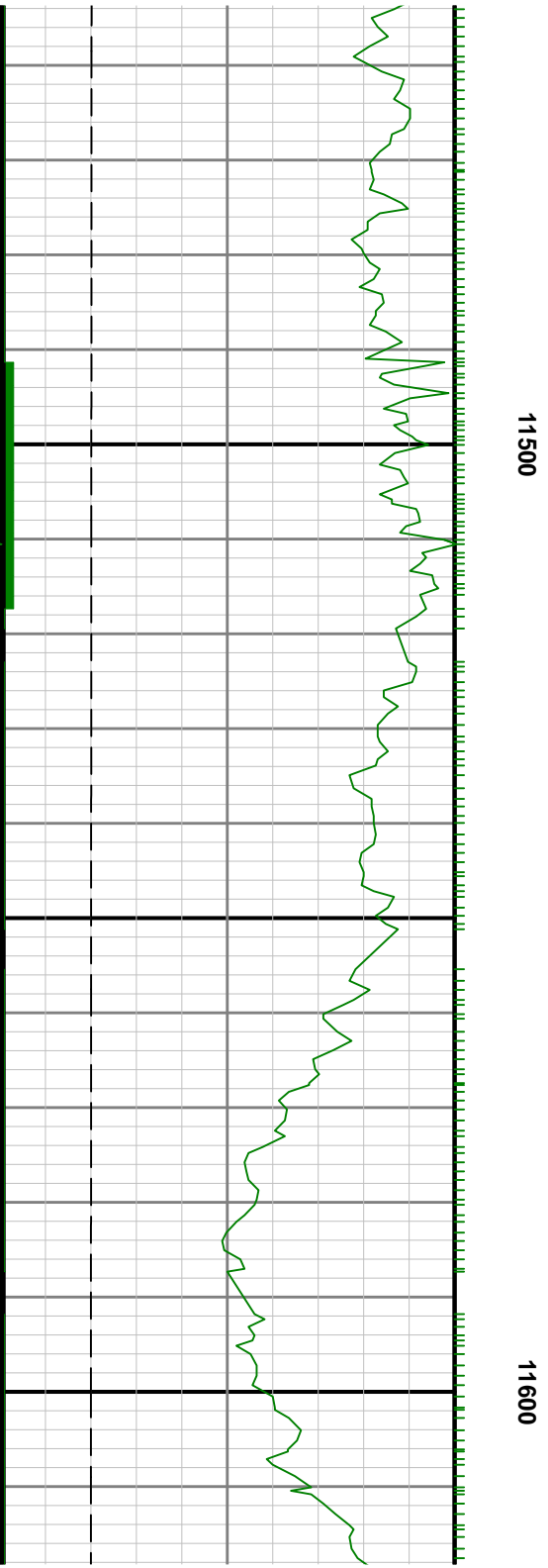
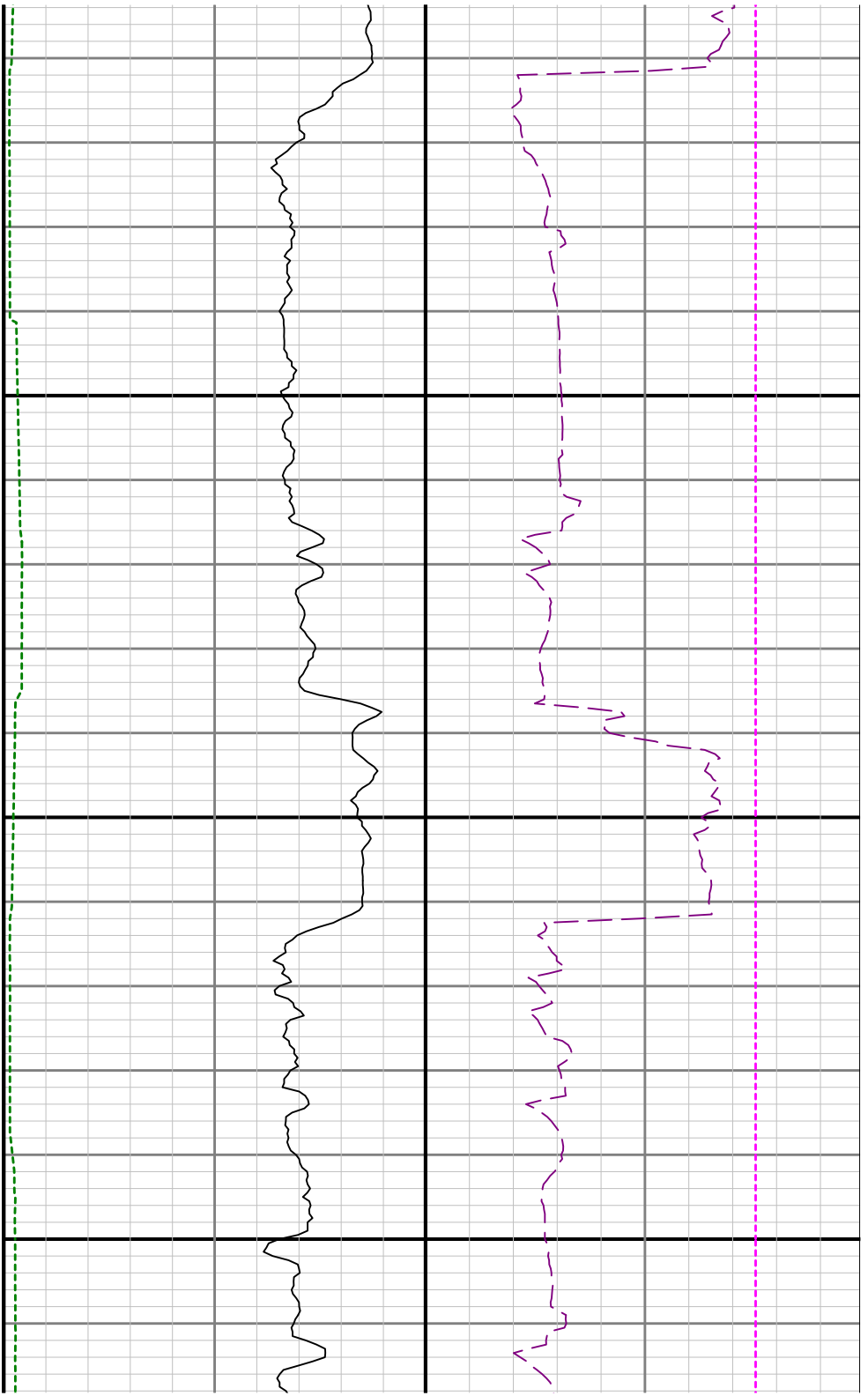


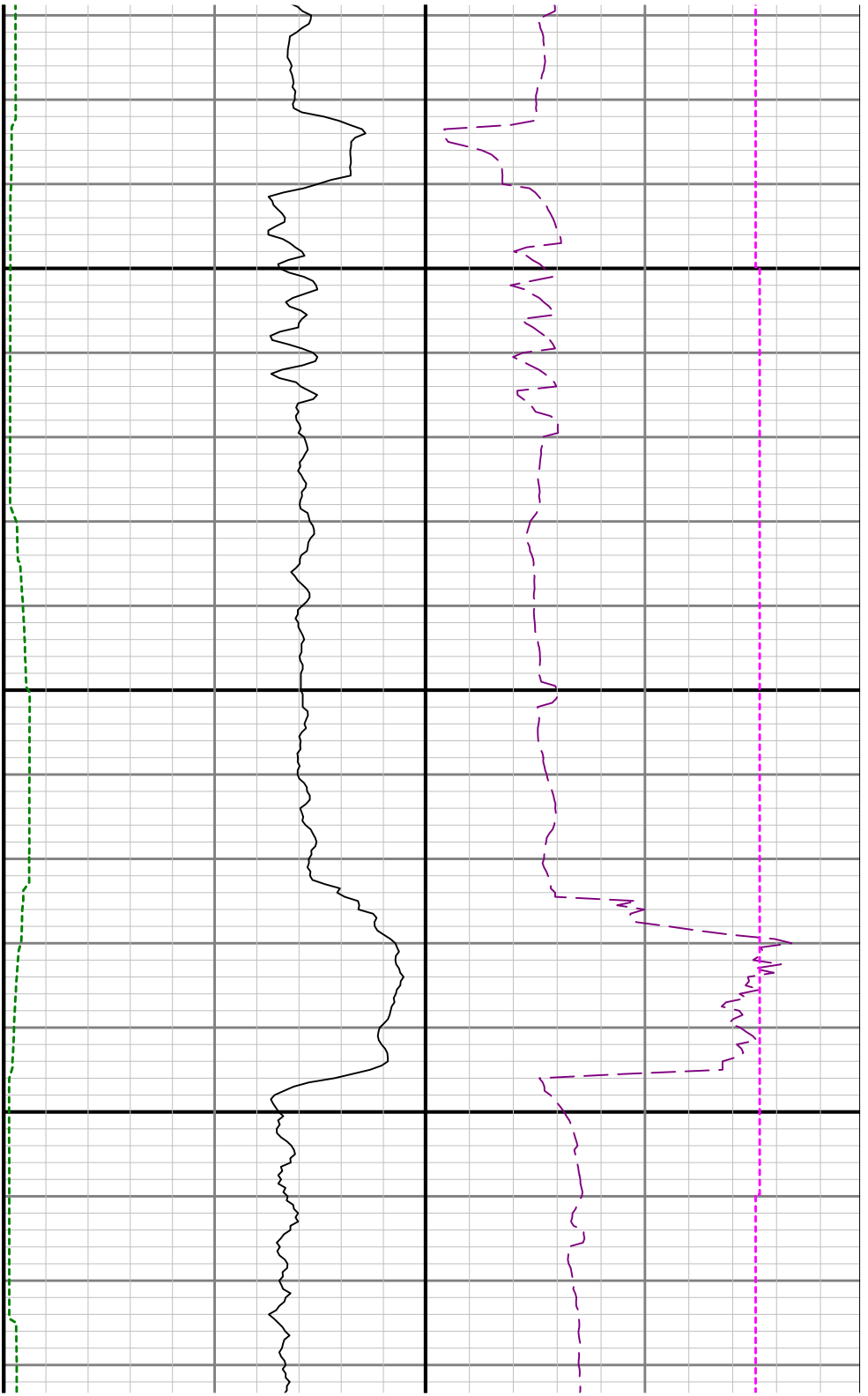


11200

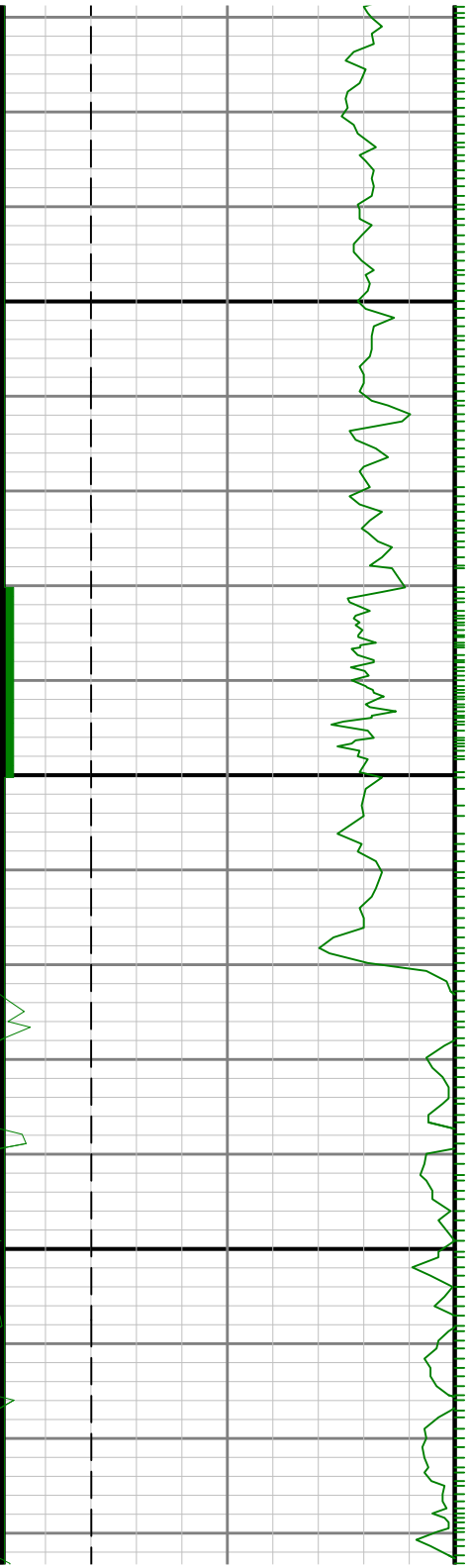


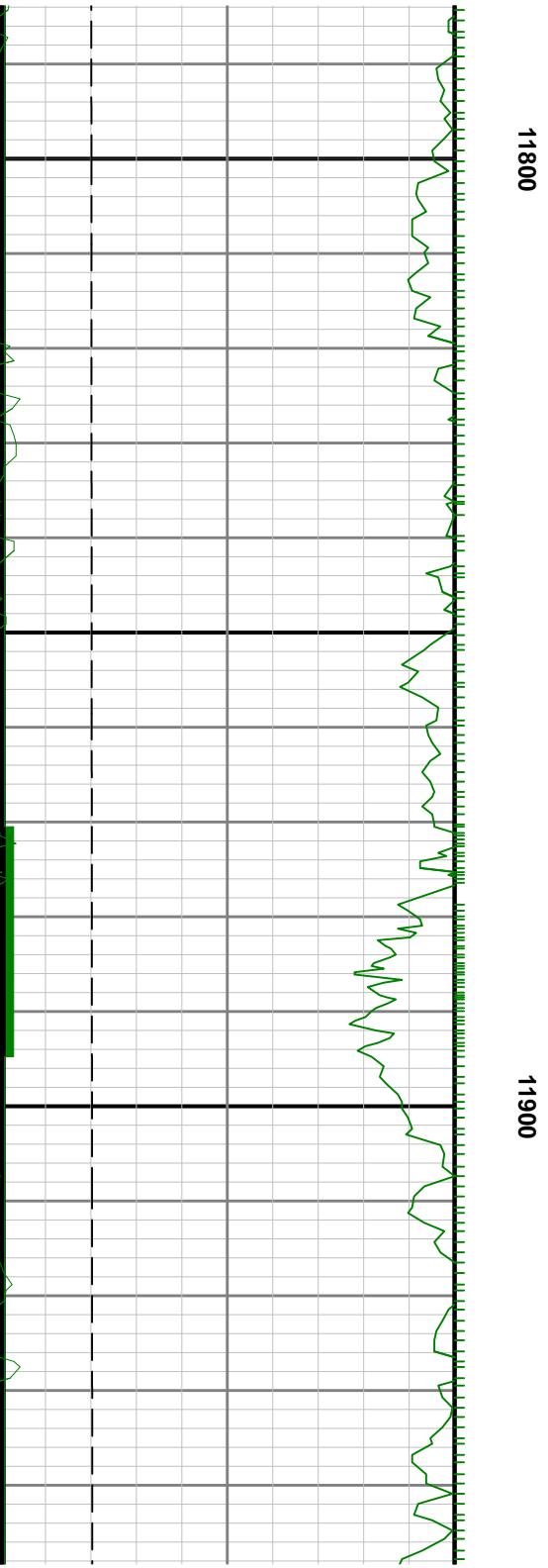


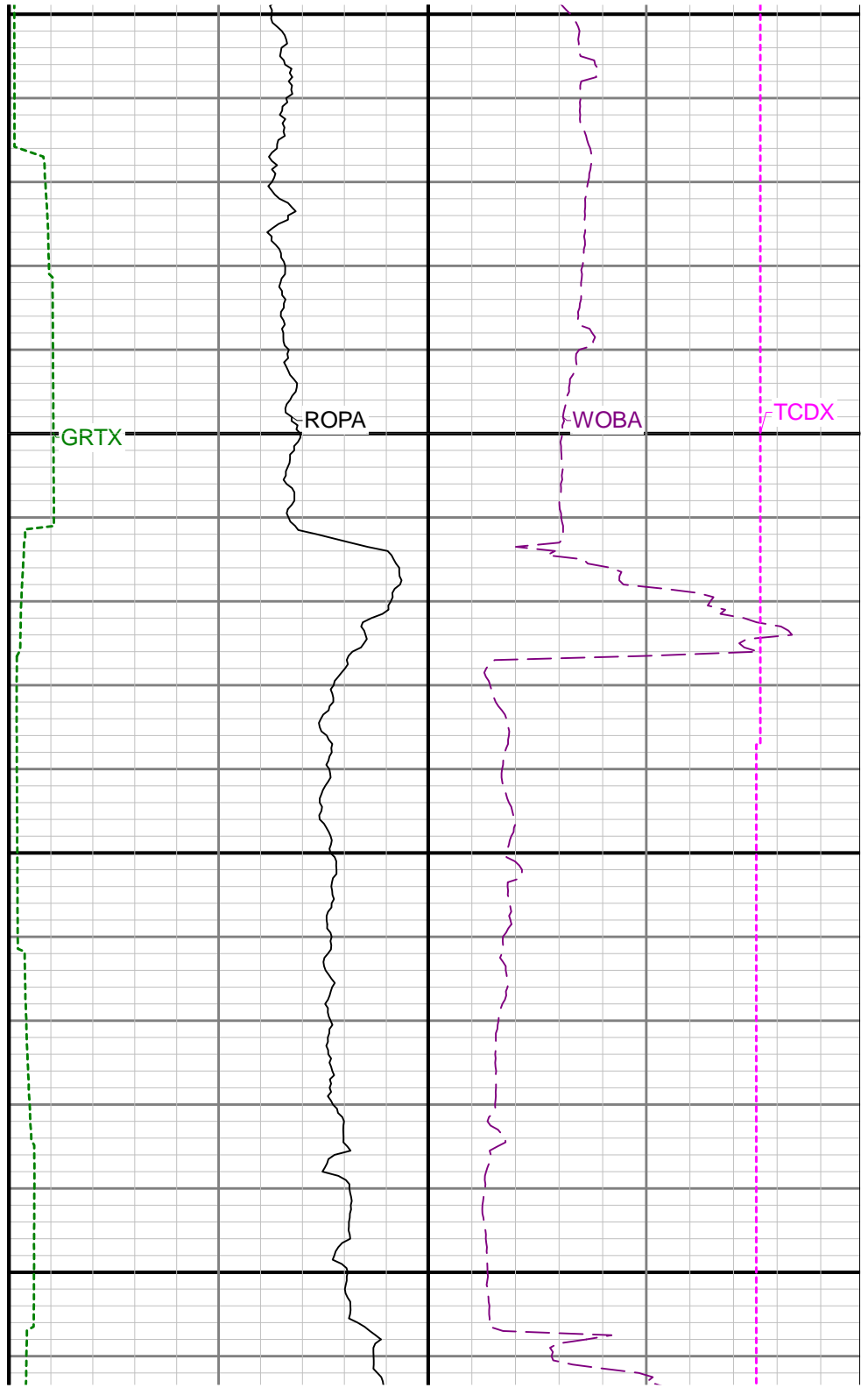
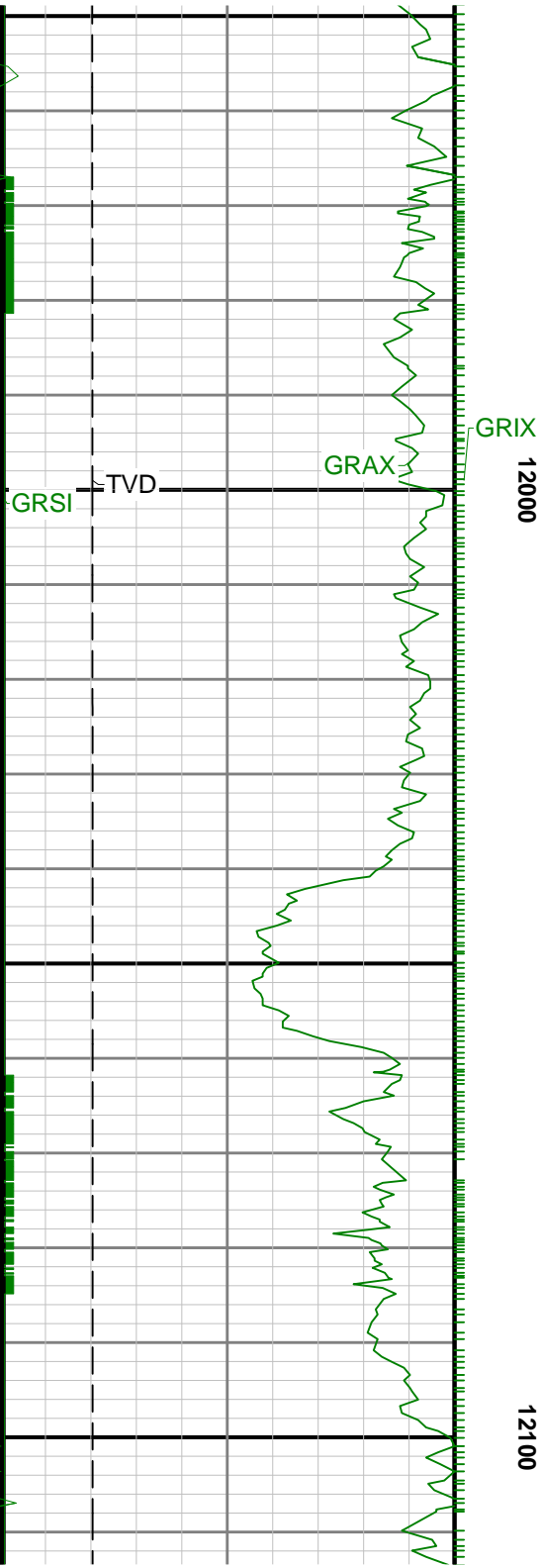




11700









12200

