



Drilling Dynamics
Gamma Ray

Scale:

1:240 MD

Company: Anadarko

Well: CARTER 14C-33HZ

Depth Reference:

Field: Weld County

Driller's Depth

County: Weld County State: Colorado

Status:

Final Print

Surface Location:

Latitude:

Longitude:

Other Services:

FEI ° Å i Ø Æ Æ i i Å Å

API No: 051234155100

Job ID: 7447039

SEC: 33

TWN: 2N

RGE: 66W

Permanent Datum (P.D.): Mean Sea Level

Elevation:

Log Measured From: Rig Floor

Above P.D.

KB: 0.00 ft
DF: 4991.00 ft
GL: 4975.00 ft

Dates

Interval Logged

Magnetic Field Reference

Date From: 2015-08-30

Top: (ft)

6858.00

Azi Reference North: True

Dip Angle: (deg)

66.72

Date To: 2015-09-01

Bottom: (ft)

12514.28

Total Magnetic Field Strength: (nT)

52761

Spud Date: 2015-08-25

Mag to Reference North Correction: (deg)

8.34 E

Borehole Record

Casing Record

Hole Size (in)

From (ft)

To (ft)

12514.28

Size (in)

Weight (lb/ft)

From (ft)

To (ft)

7.875

1900.00

12514.28

10.000

0.00

16.00

1841.00

Mud Record

Deviation Record

Type

From (ft)

To (ft)

12514.28

Hole Size (in)

Interval (ft)

Inc | Az (Start)

Inc | Az (End)

Diesel-Oil Based Mud

6858.00

12514.28

7.875

10614.33

13.94 | 39.12

88.49 | 178.39

Acquisition System

Software Version

Other

Baker Hughes Cadence

2.0.7102.1

Prior Studio

2.0.7102.1

Rig:

Xtreme 23

Contractor:

Xtreme Drilling

Unit:

D&E

District:

RMD

"These interpretations and analyses ("Interpretations") are opinions provided by Baker Hughes Oilfield Operations, Inc ("Baker Hughes"), based upon industry practice, empirical relationships, assumptions and measurements, (many of which may be provided by the customer). The Interpretations are not infallible and may be subject to different opinions. Vjwu. "Dcmgt"Jwijgu"fqgu"pqv"ycttcpv"vjgkt"ceewtce{. "eqttgevpguu. "qt"eqorngvgpguu. "qt"vjcv"vjg"ewuvqogtøu"cpflqt"cp{ "vjktf"rctv{øu"tgnkcpeg"qp"uwej"Kpvgtrtgv cvkqpu"yknn"cee qornkuj"cp{ "rctvkewnct"tguwnvu0"Vjg"ewuvqogt"cuuwogu"hwnn" responsibility for the use of the Interpretations and for decisions based thereon and the customer agrees to release, defend and indemnify Baker Hughes, its parent, subsidiaries and affiliated or related entities, and subcontractors, together with its and their officers, directors, employees, agents and invitees against, any and all claims, losses, damages, or expenses sustained by the customer or any third party arising out of reliance upon or use of the Interpretations, without regard to the cause(s) thereof, including without limitation any form of negligence on the

part of Baker Hughes. Unless other contract terms have been agreed to by the parties, each party's liabilities and

Log Run Summary

Run No	Bit Run No.	Bit Size (in)	Bit Type	Bit Gauge Length (in)	Assembly Type	Logged Interval		Bit Depth Interval		Date / Time		Circ.
						Top	Bottom	From	To	Start Logging	End Logging	Hours
						(ft)	(ft)	(ft)	(ft)			
1	1	7.875	PDC	2.50	Motor	6813.37	12003.60	6857.82	12048.05	2015-08-30 08:03	2015-08-31 21:31	49.40
2	3	7.875	PDC	2.50	Motor	12000.76	12467.04	12048.00	12514.28	2015-09-01 15:11	2015-09-01 17:35	4.04

Crew

Name	Arrive Wellsite	Depart Wellsite	Name	Arrive Wellsite	Depart Wellsite	Name	Arrive Wellsite	Depart Wellsite
Donald Delay	2015-08-28	2015-08-29	Matthew Delmore	2015-08-30	2015-09-02	Sumanth Belawadi	2015-08-30	2015-09-02

Mud Properties Record

Date / Time	Run No.	Measured Depth (ft)	Mud Type	Density (ppg)	Viscosity (cP)	pH	Fluid Loss (cm3)	Oil / Water	Source	Total Chlorides (ppm)	K+ (%)
2015-08-30 16:08	1	7840.03	Diesel-Oil Based Mud	9.0	48	0	9.0	60.5/30.5	Active Pit	73000	0.00
2015-08-31 13:29	1	11020.87	Diesel-Oil Based Mud	9.3	47	0	8.0	61.0/29.0	Active Pit	72000	0.00
2015-08-31 18:00	1	11719.00	Diesel-Oil Based Mud	9.4	57	0	7.7	60.5/28.5	Active Pit	69000	0.00

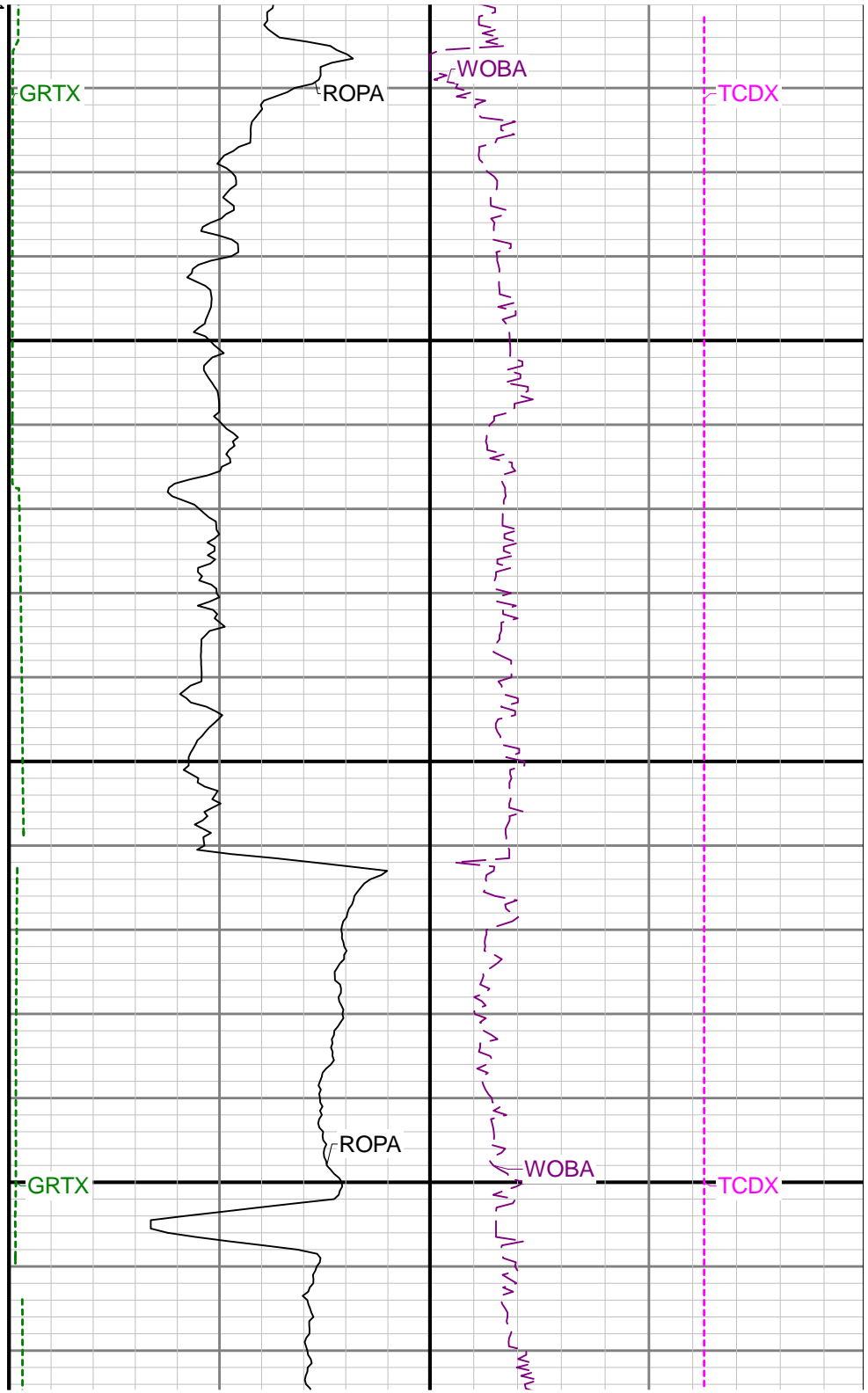
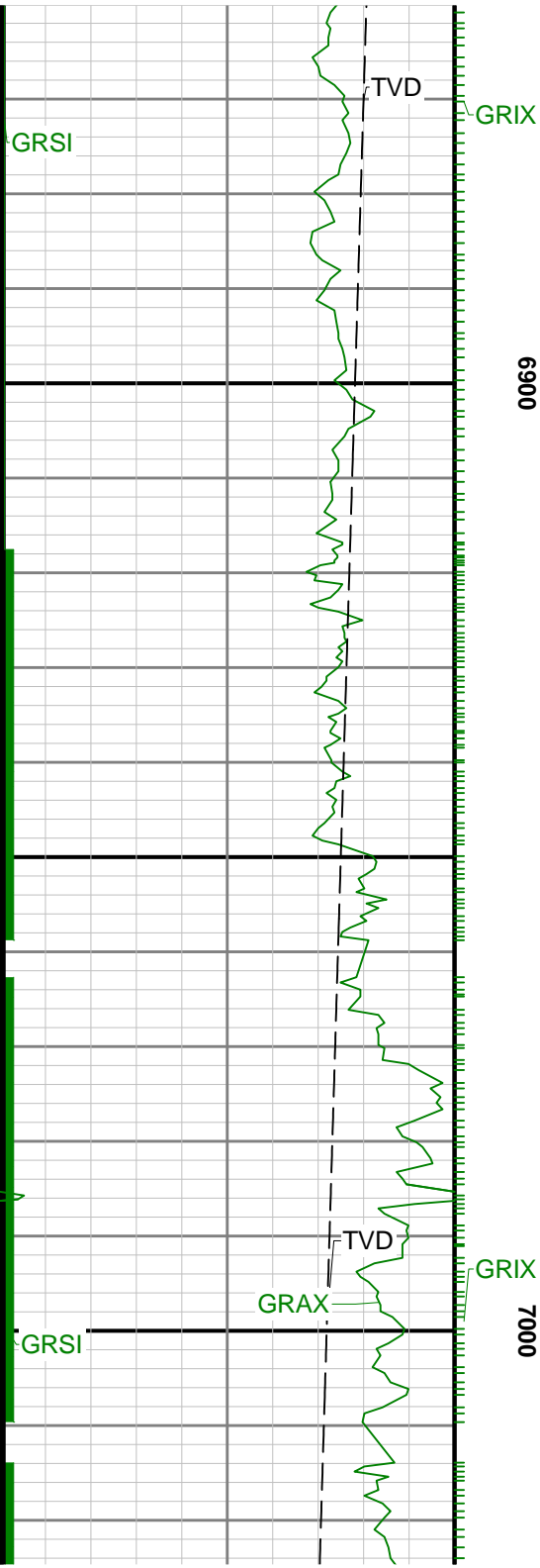
Equipment and Service Data

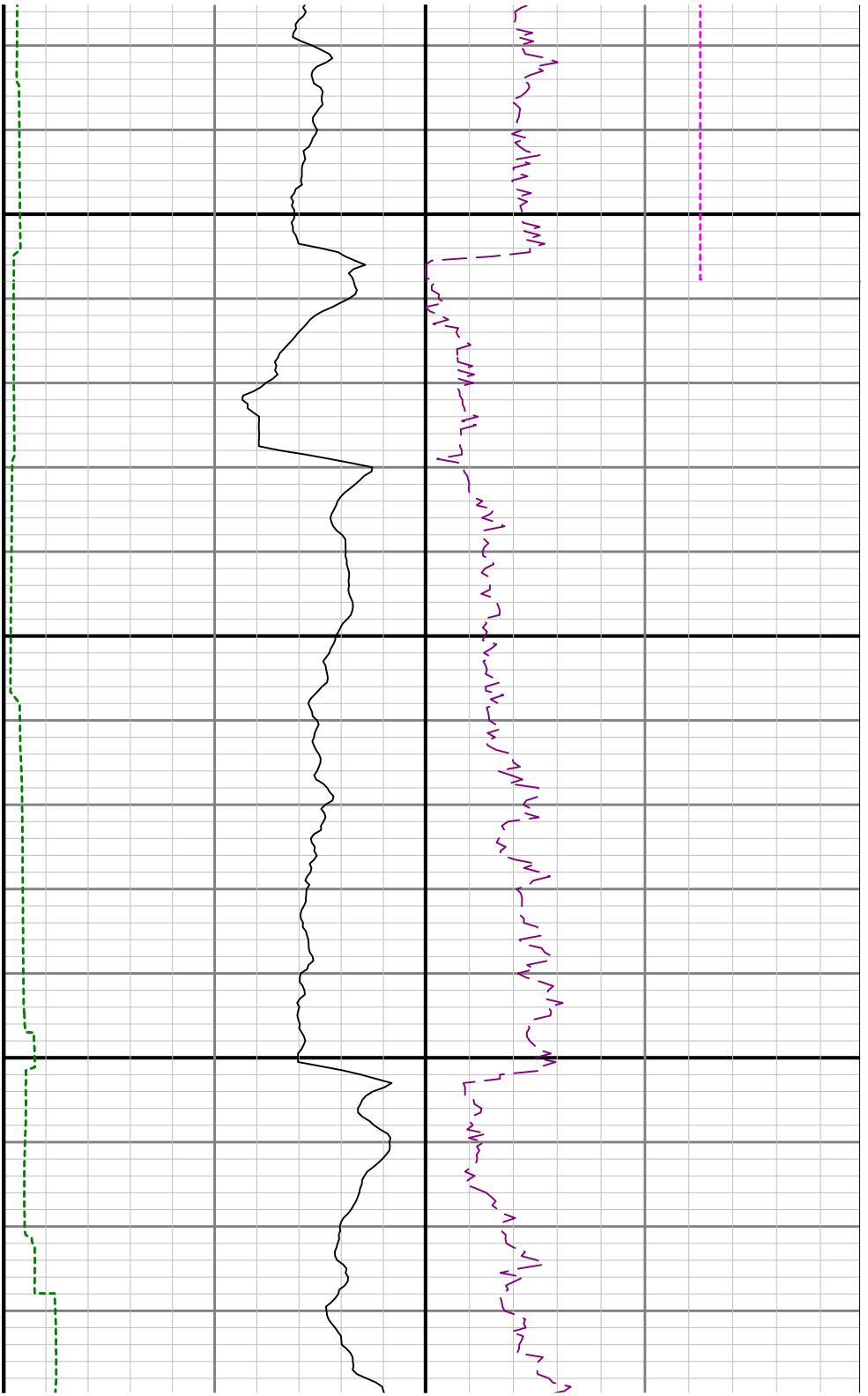
Run No.	Tool	Serial Number	Measurement	Sensor Offset (ft)	Bit Offset (ft)	Max O.D. (in)	Min I.D. (in)
1	NaviGamma	506	Gamma (single)	13.42	44.45	6.770	3.250
1	NaviGamma	506	Directional (mag)	16.84	47.87	6.770	3.250
1	NaviGamma	506	VSS	16.84	47.87	6.770	3.250
2	NaviGamma	10350731	Gamma (single)	14.43	47.24	6.500	3.250
2	NaviGamma	10350731	Directional (mag)	17.84	50.65	6.500	3.250
2	NaviGamma	10350731	VSS	17.84	50.65	6.500	3.250

Comments

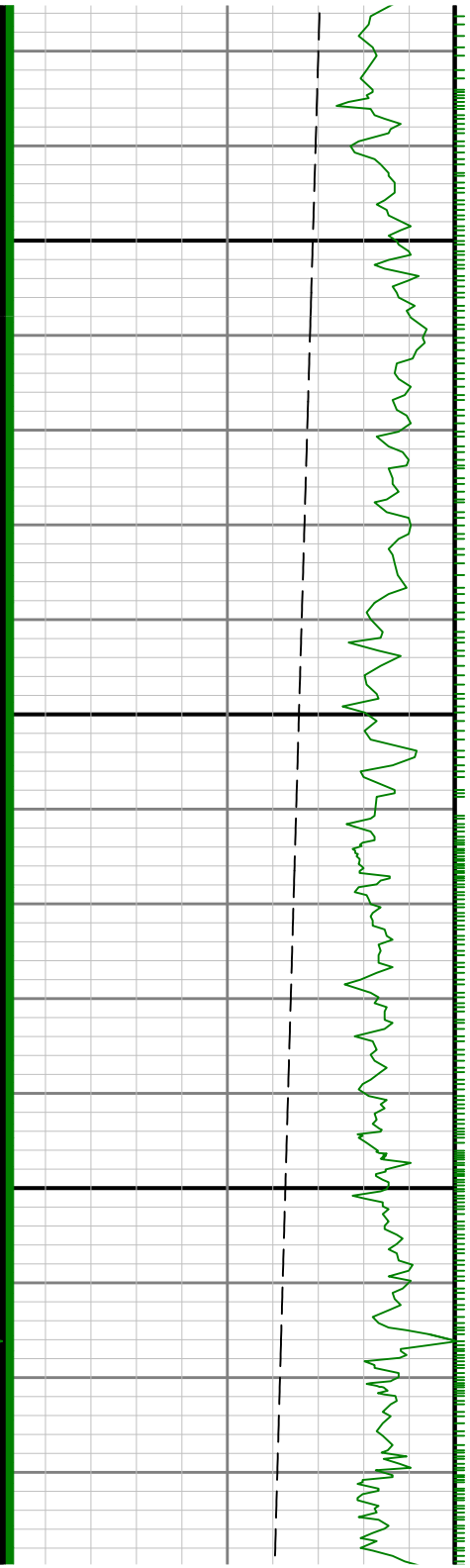
- 1 Depth measurements were obtained from a depth control system not supplied or operated by Baker Hughes. Due to lack of control by Baker Hughes logging
engineers, depth calibrations and measurements could not be independently verified and the unverified depths as supplied to Baker Hughes are being used to
represent logging data.
- 2 Baker Hughes Run 1 utilized a 6 3/4 inch Navitrak (Directional) tool behind an 7 7/8 inch bit and steerable assembly from 1900 to 6858 feet MD (1874.69 to
6708.24 feet TVD) and a Navigamma (Directional and gamma) tool behind a 7 7/8 inch bit from 6858 to 12514.28 feet MD (6708.24 to 7542.51 feet TVD).
- 3 A sliding indicator is shown on the left side of the track as a heavy line. This indicator has been depth-shifted to the Gamma Ray sensor offset to correspond with

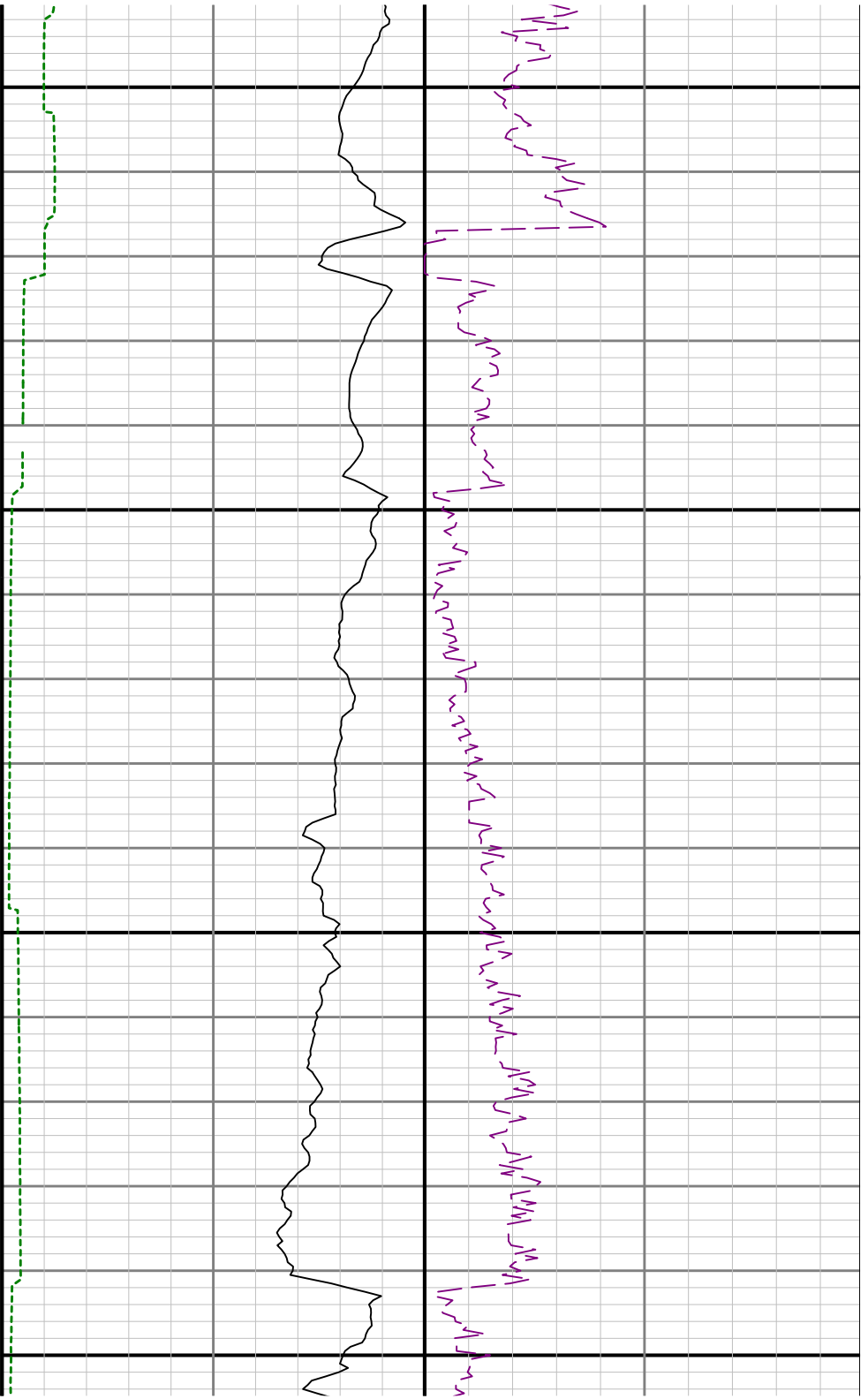
[illegible]





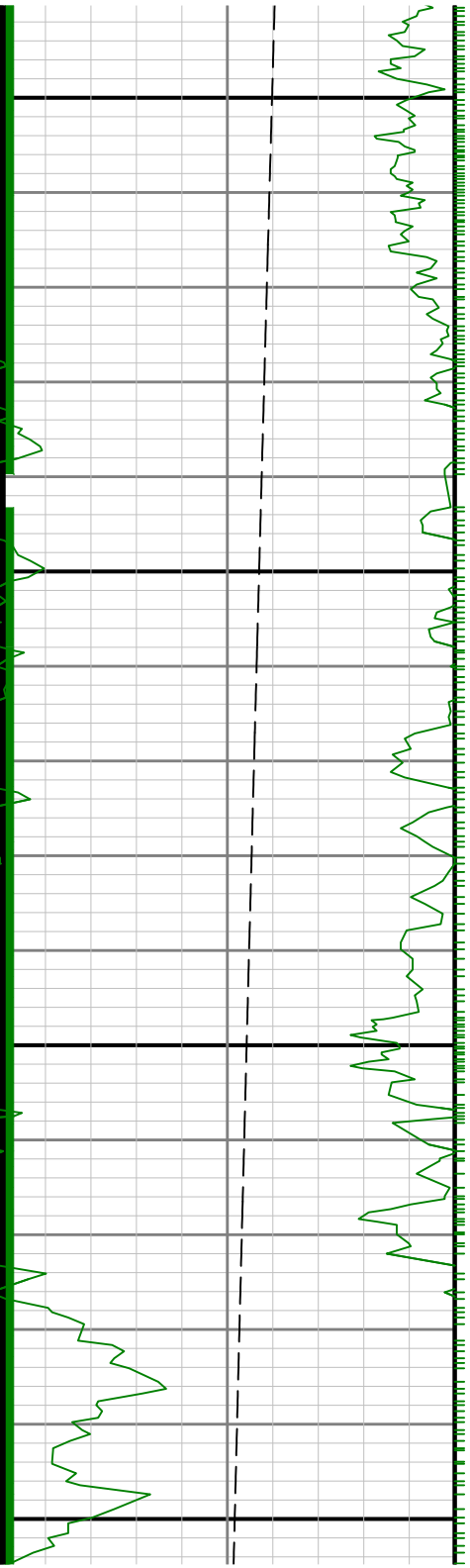
7100

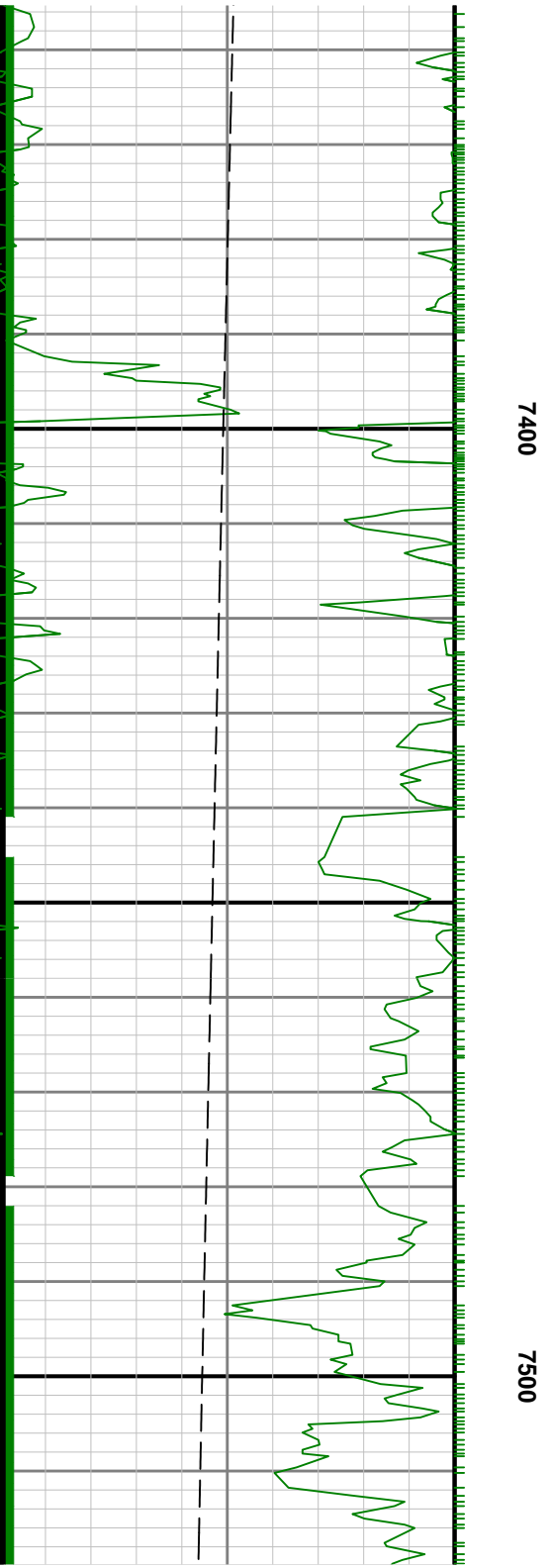


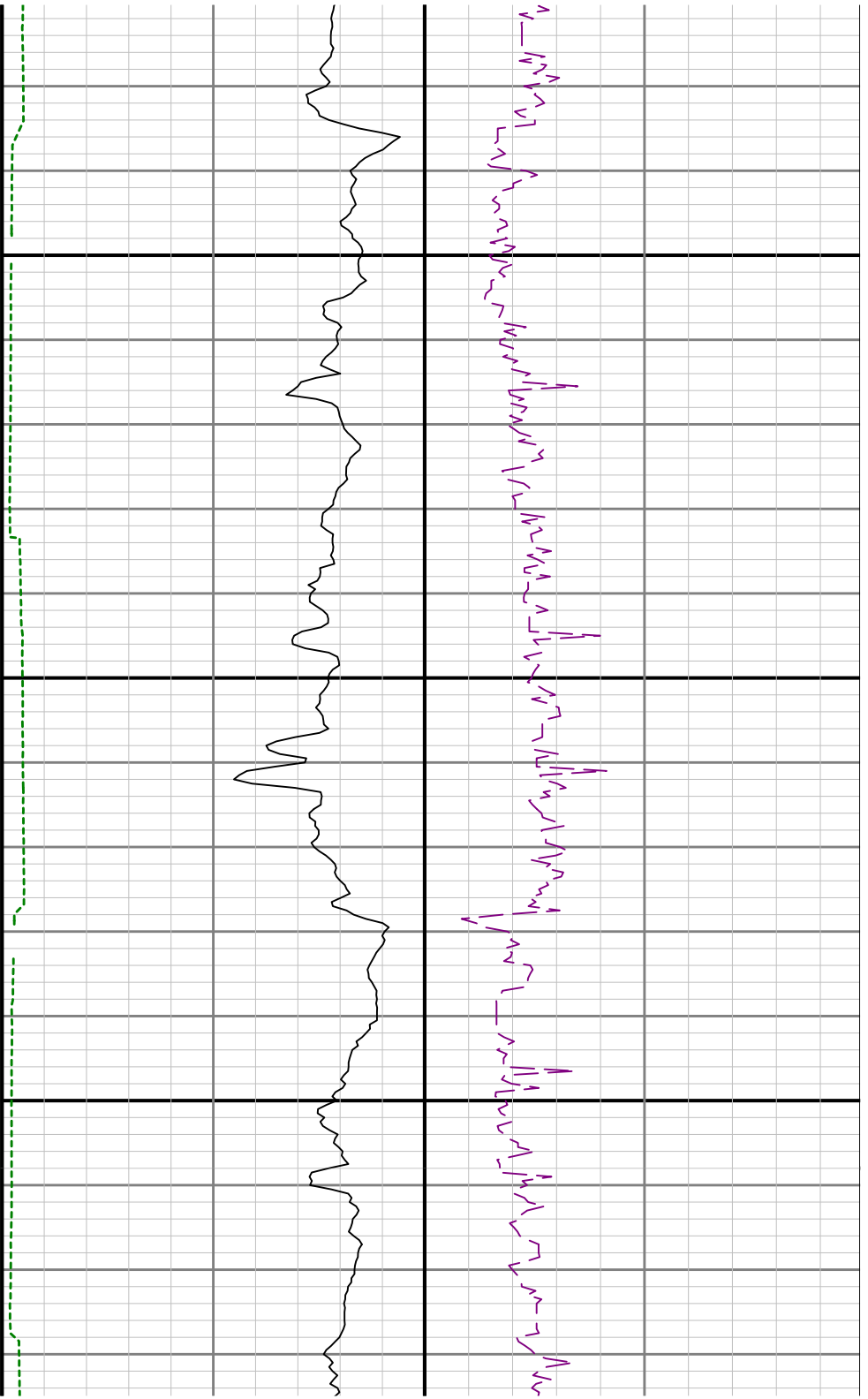


7200

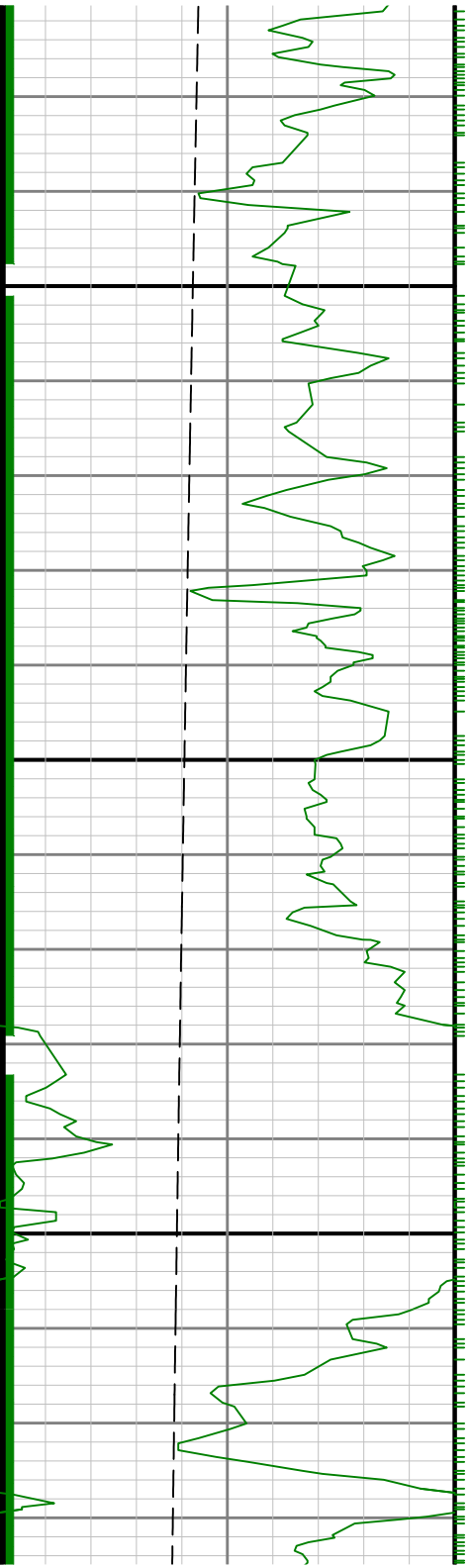
7300

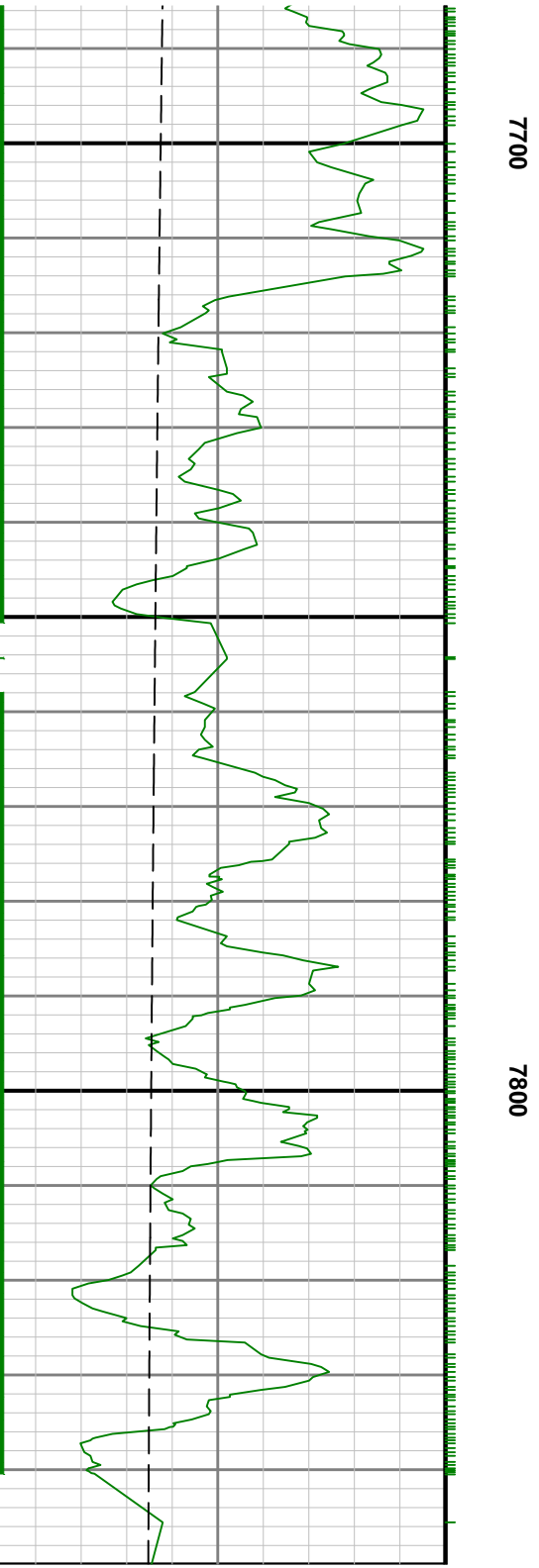
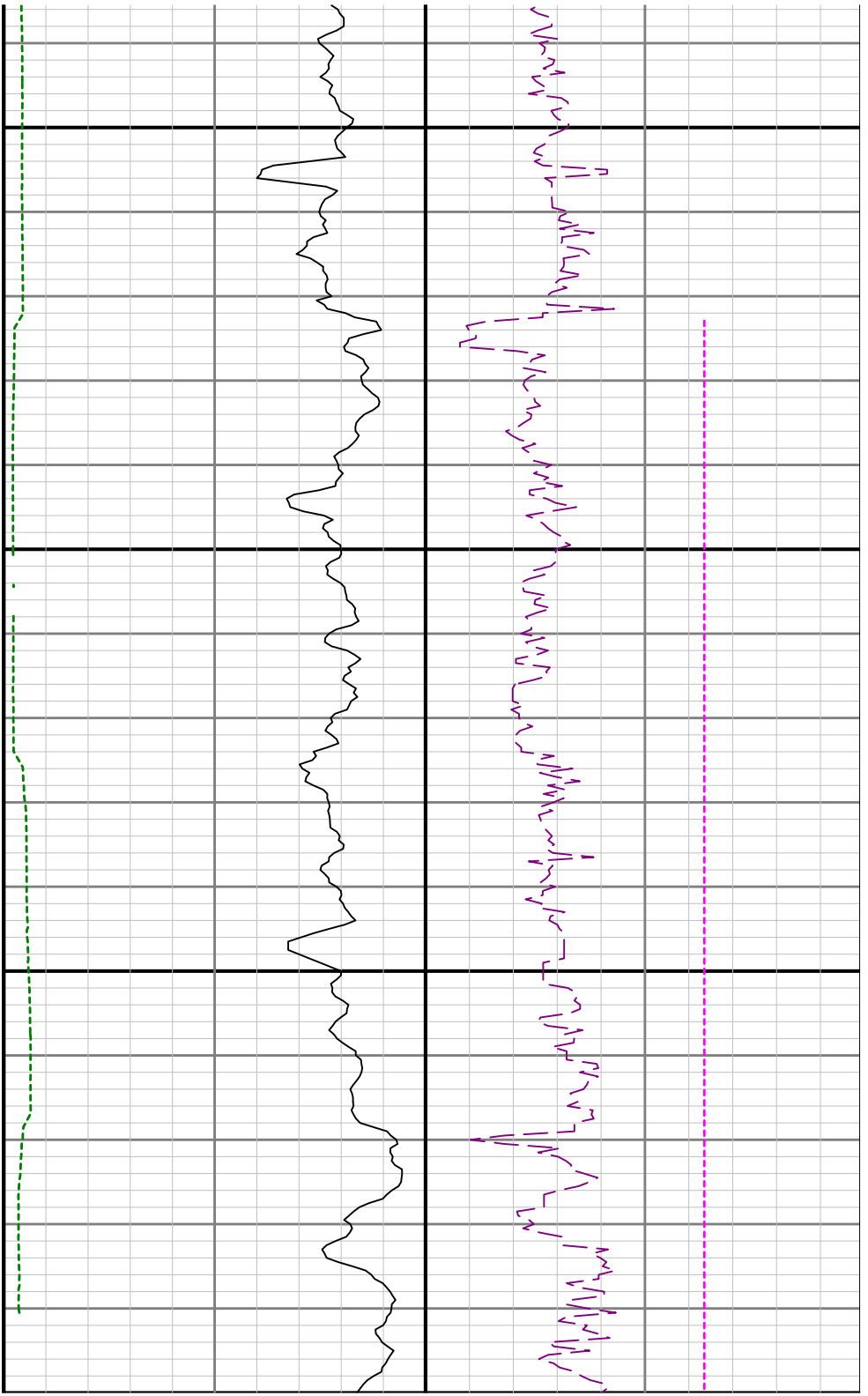


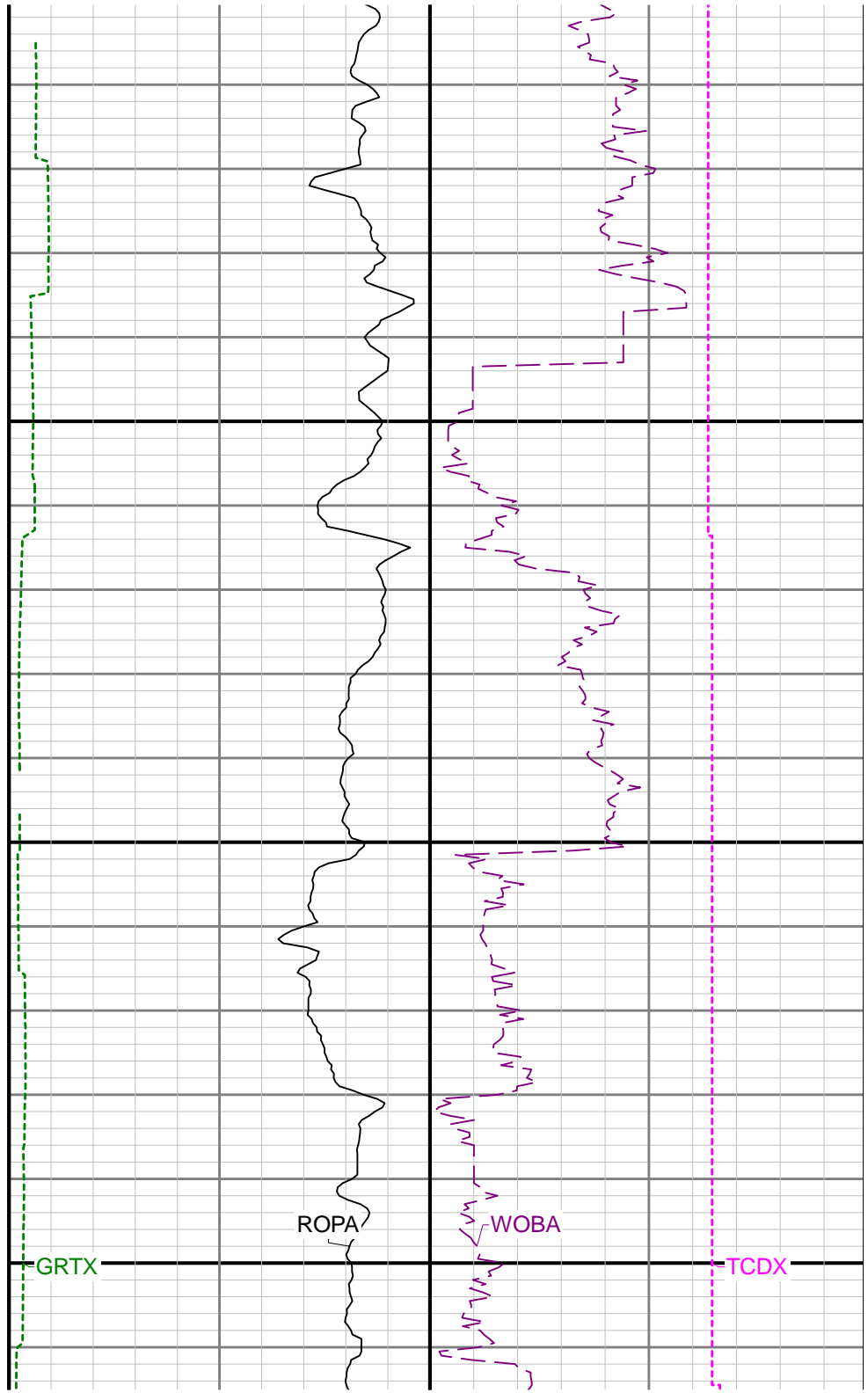
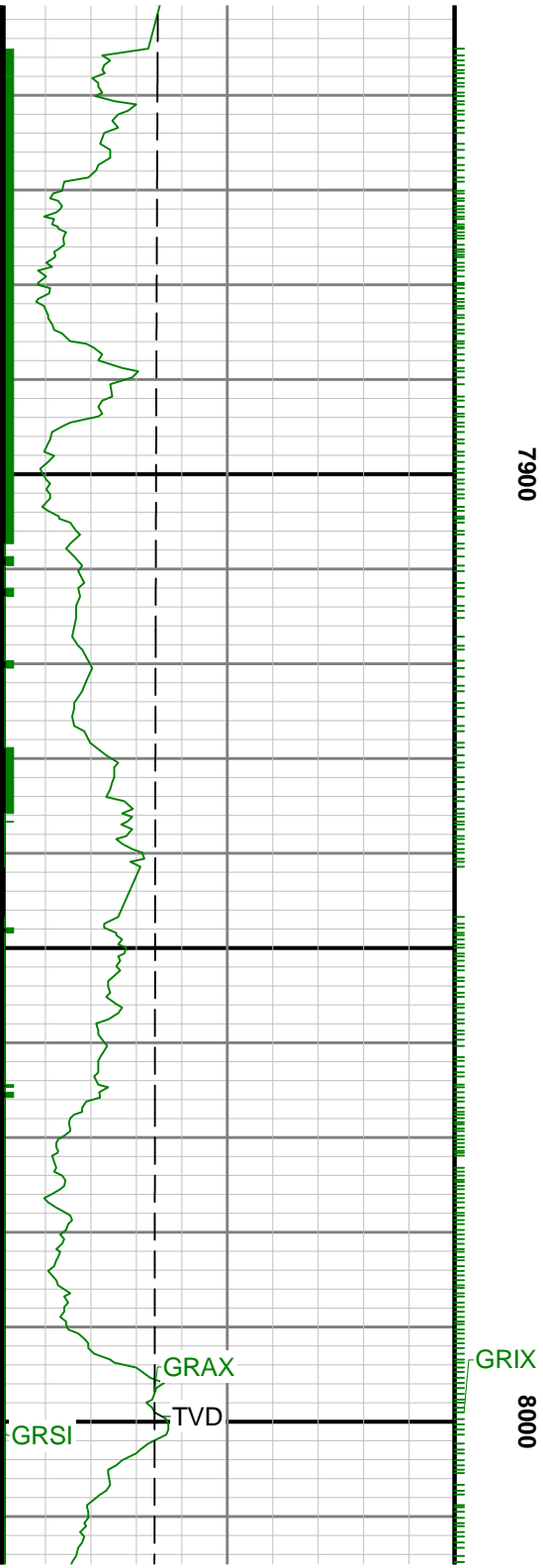




7600

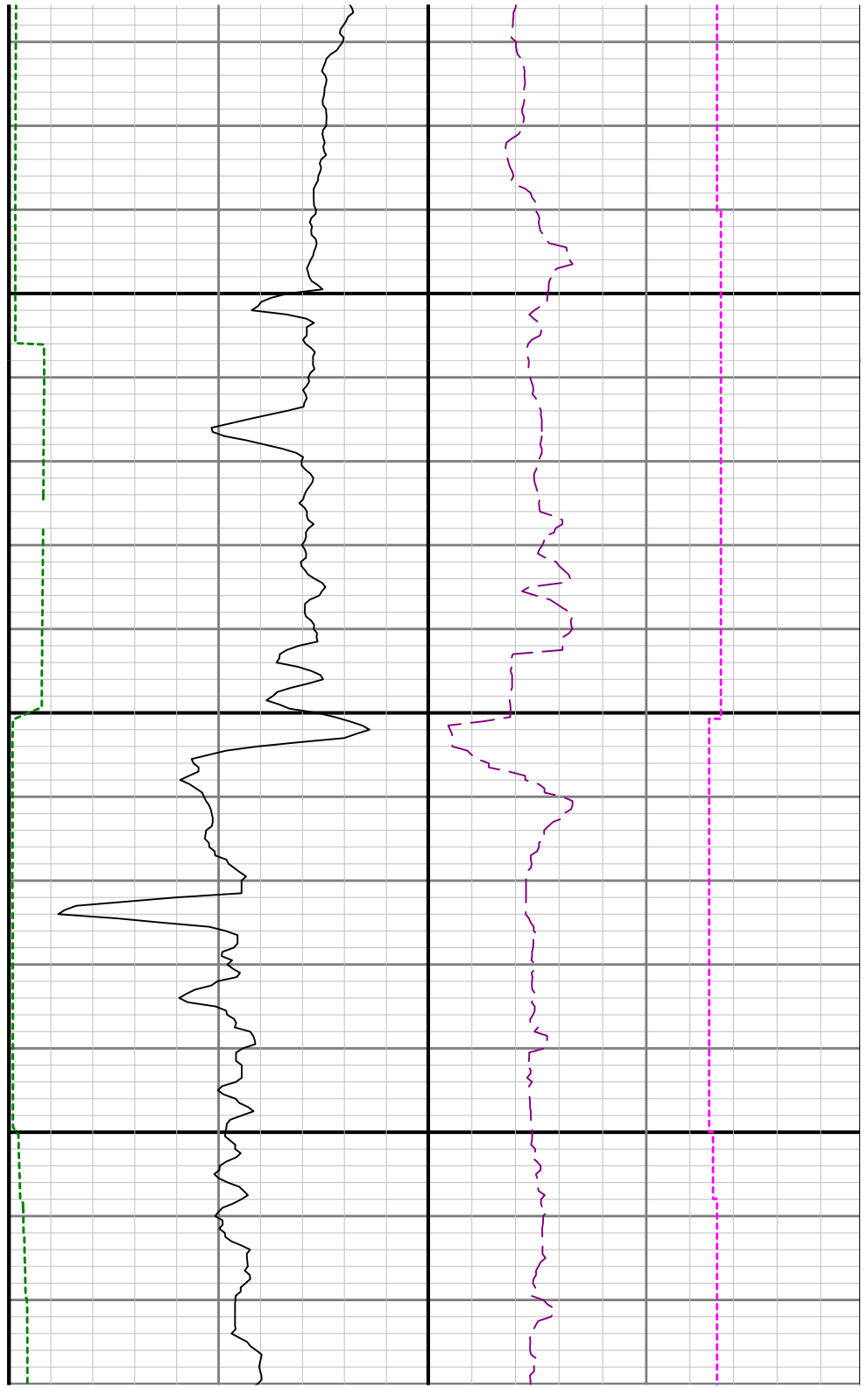


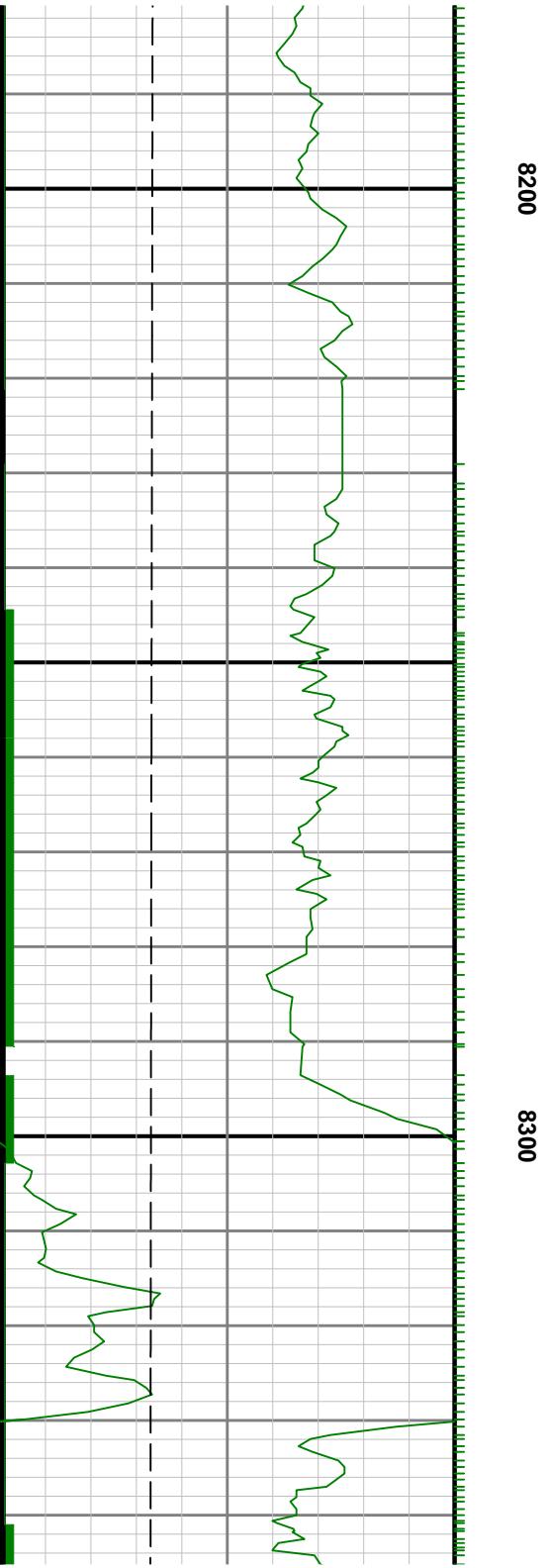


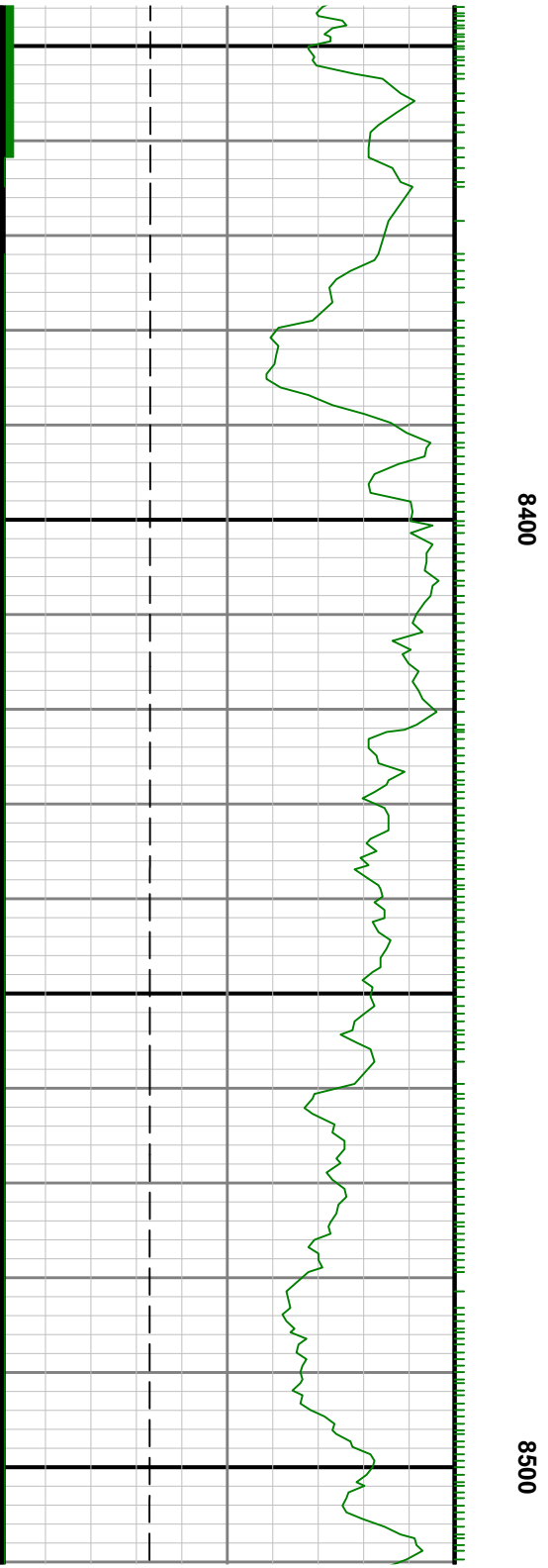
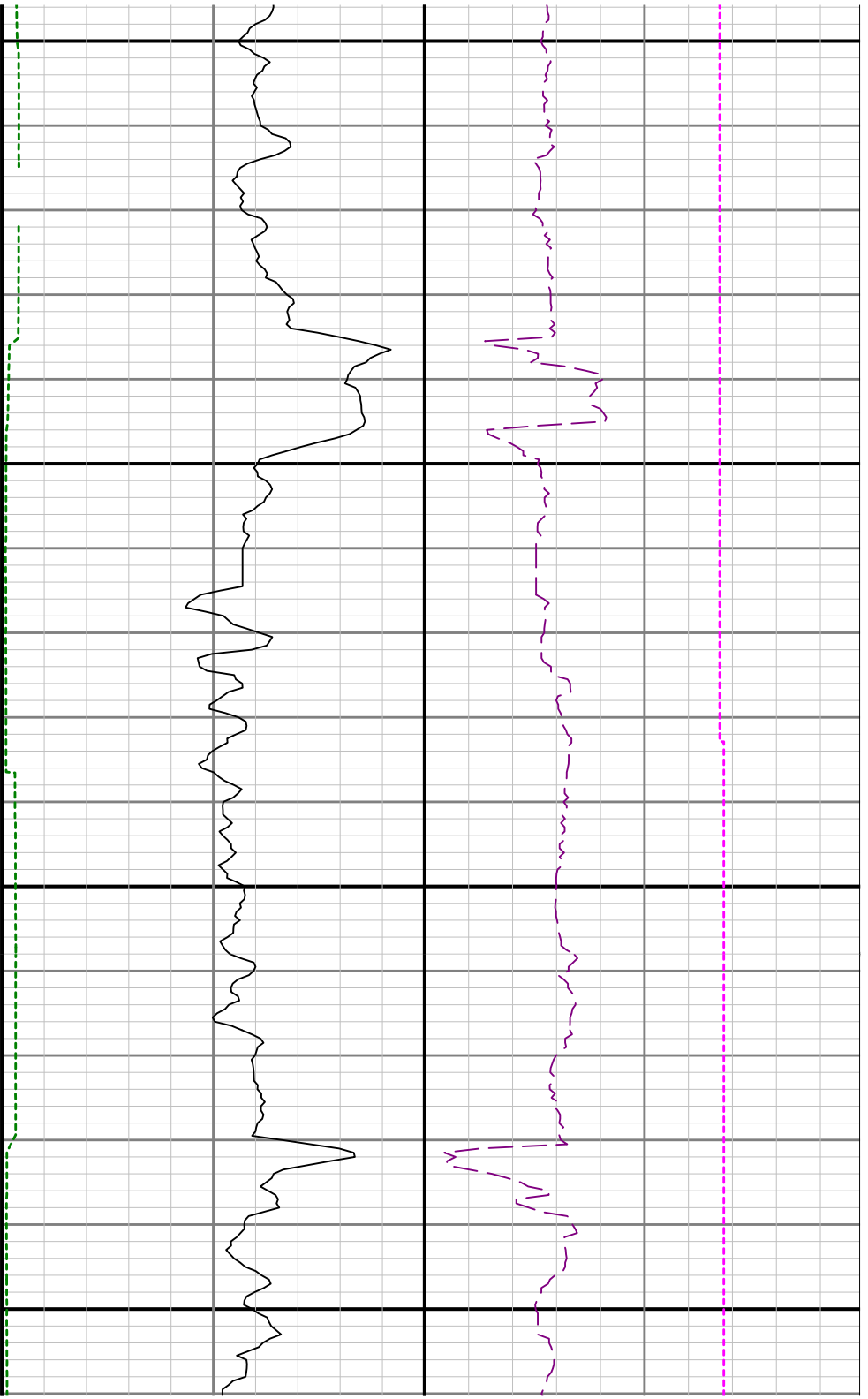


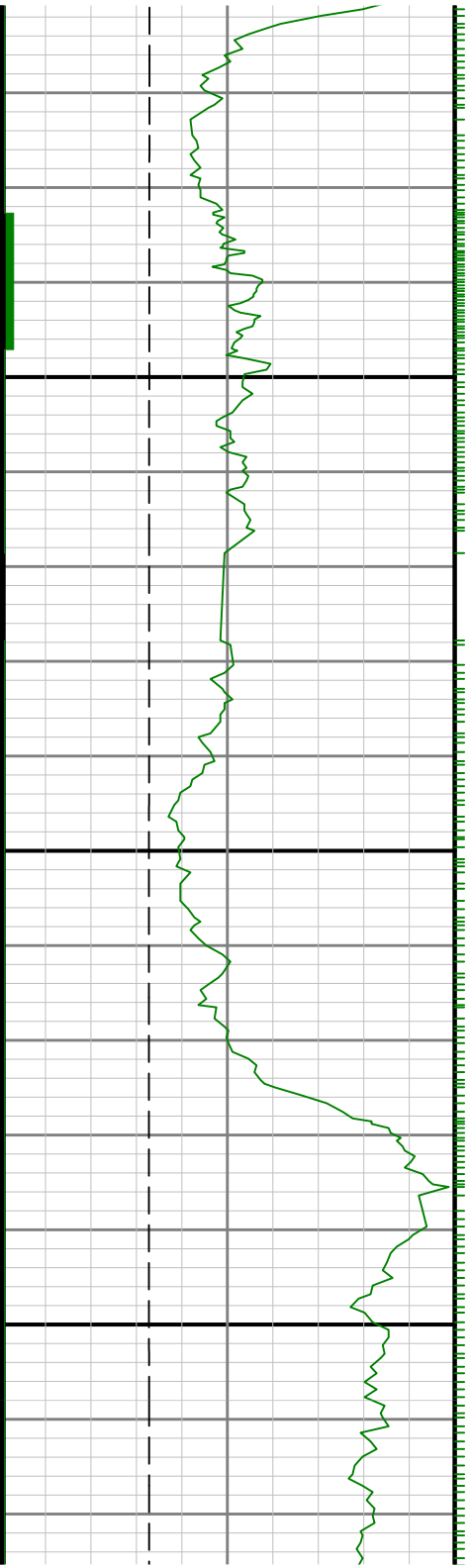


8100

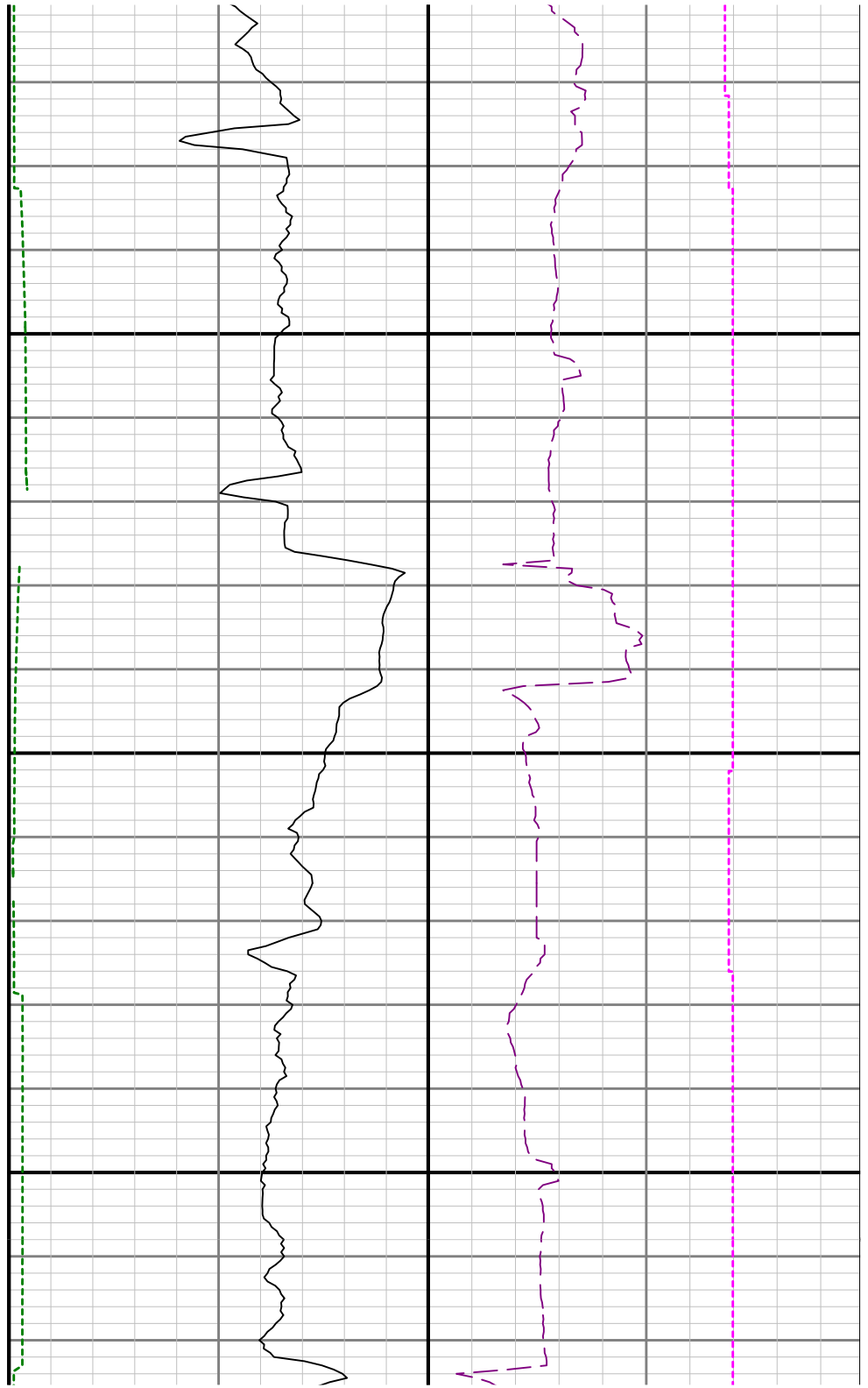


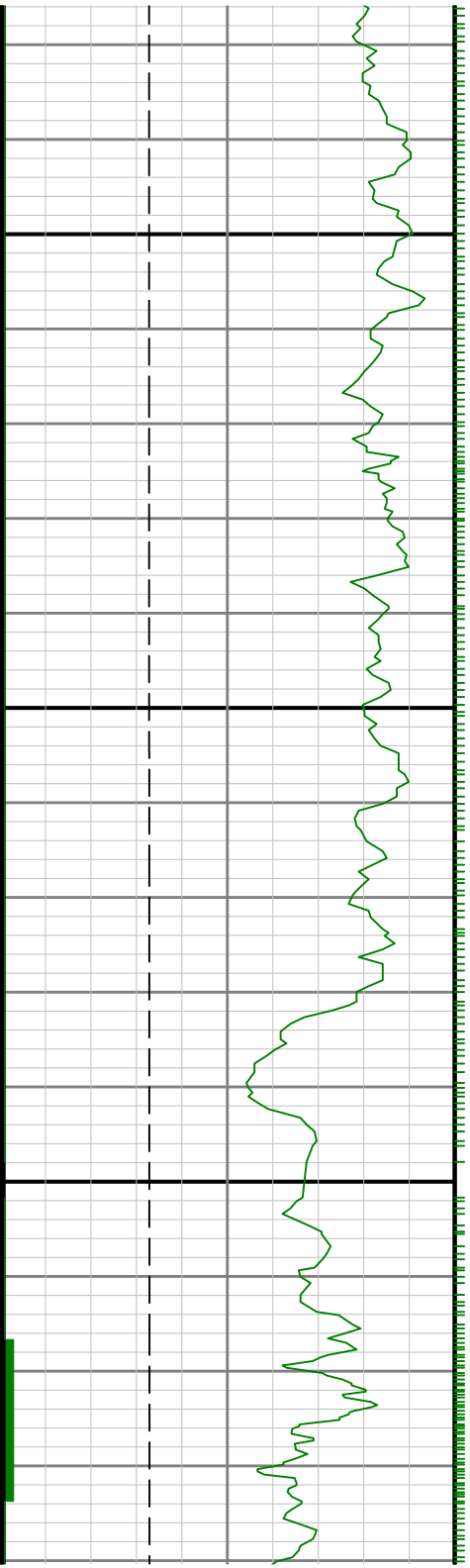






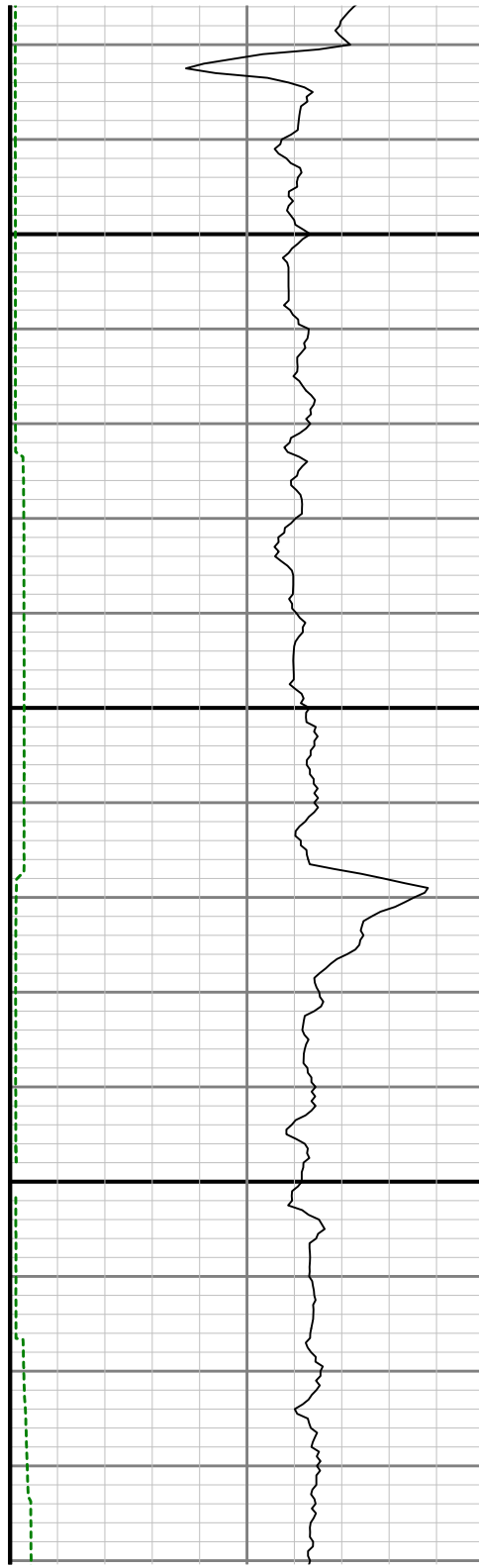
0098

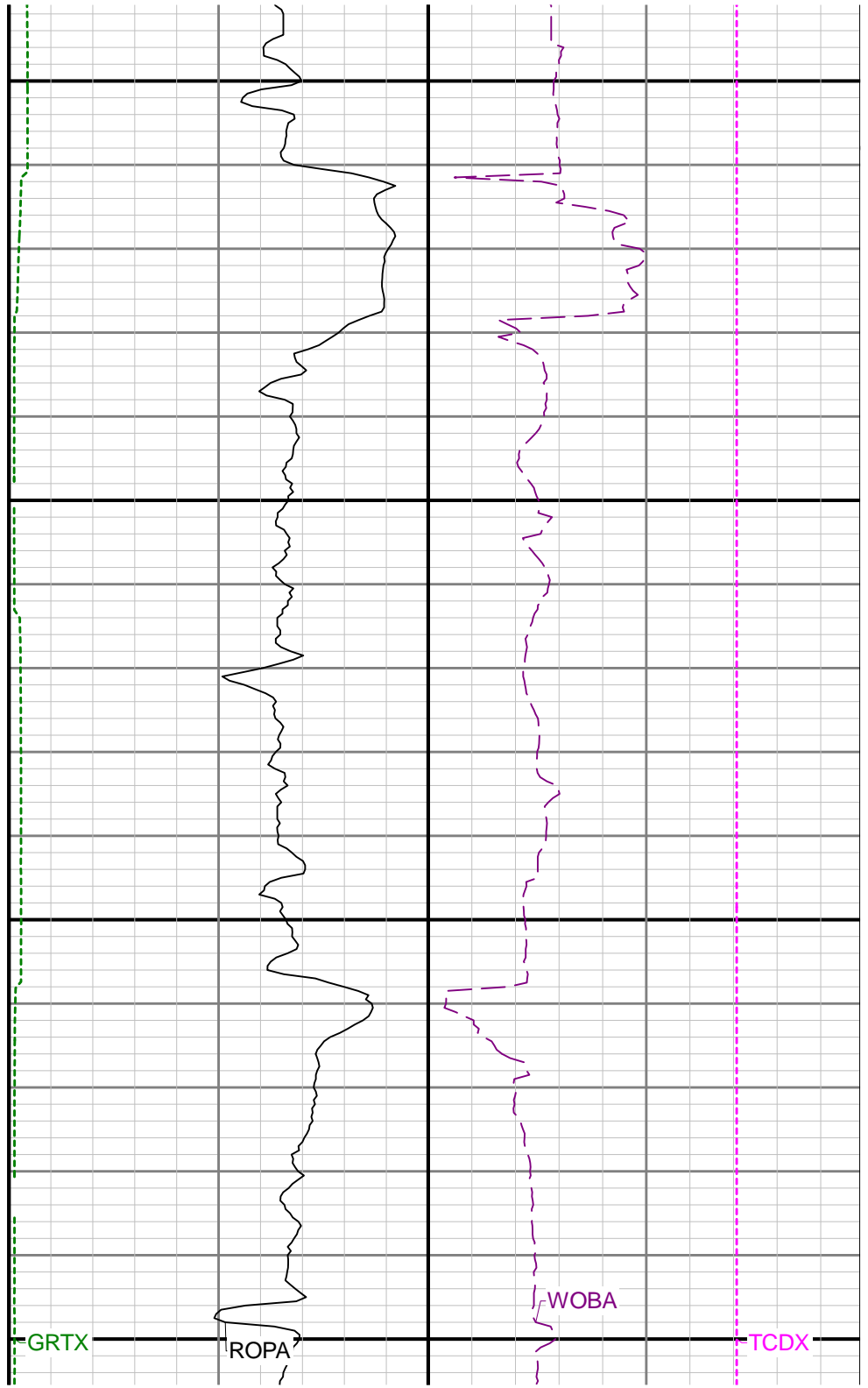
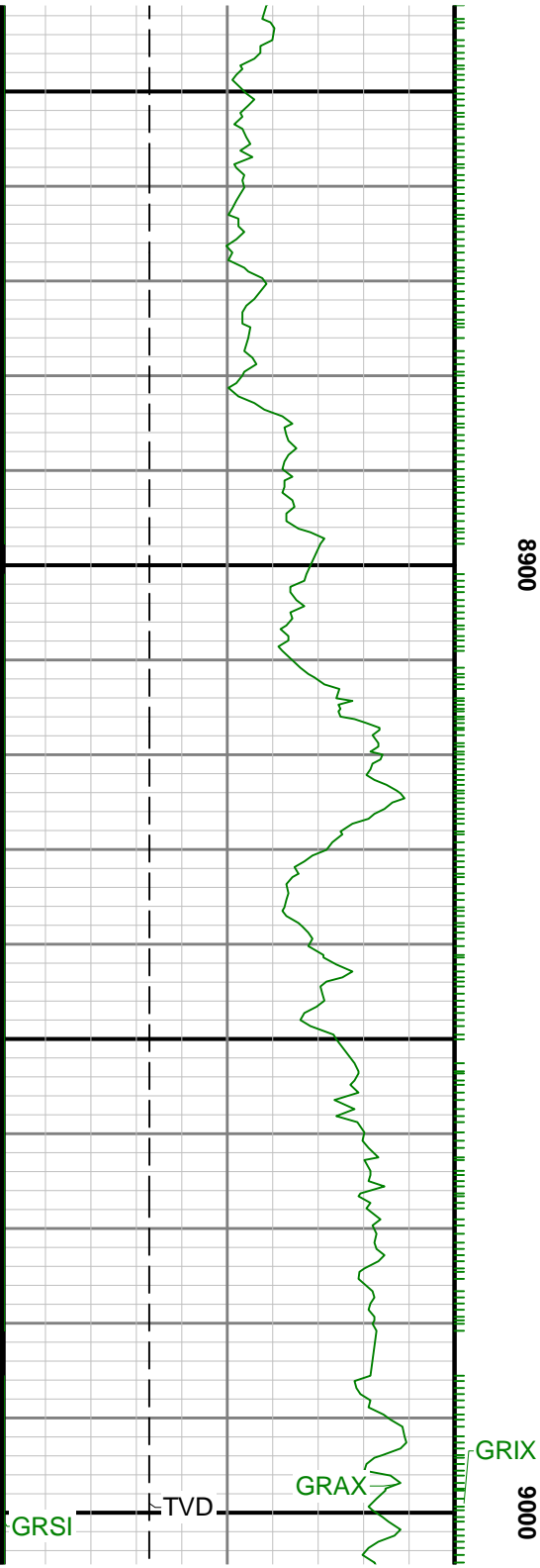


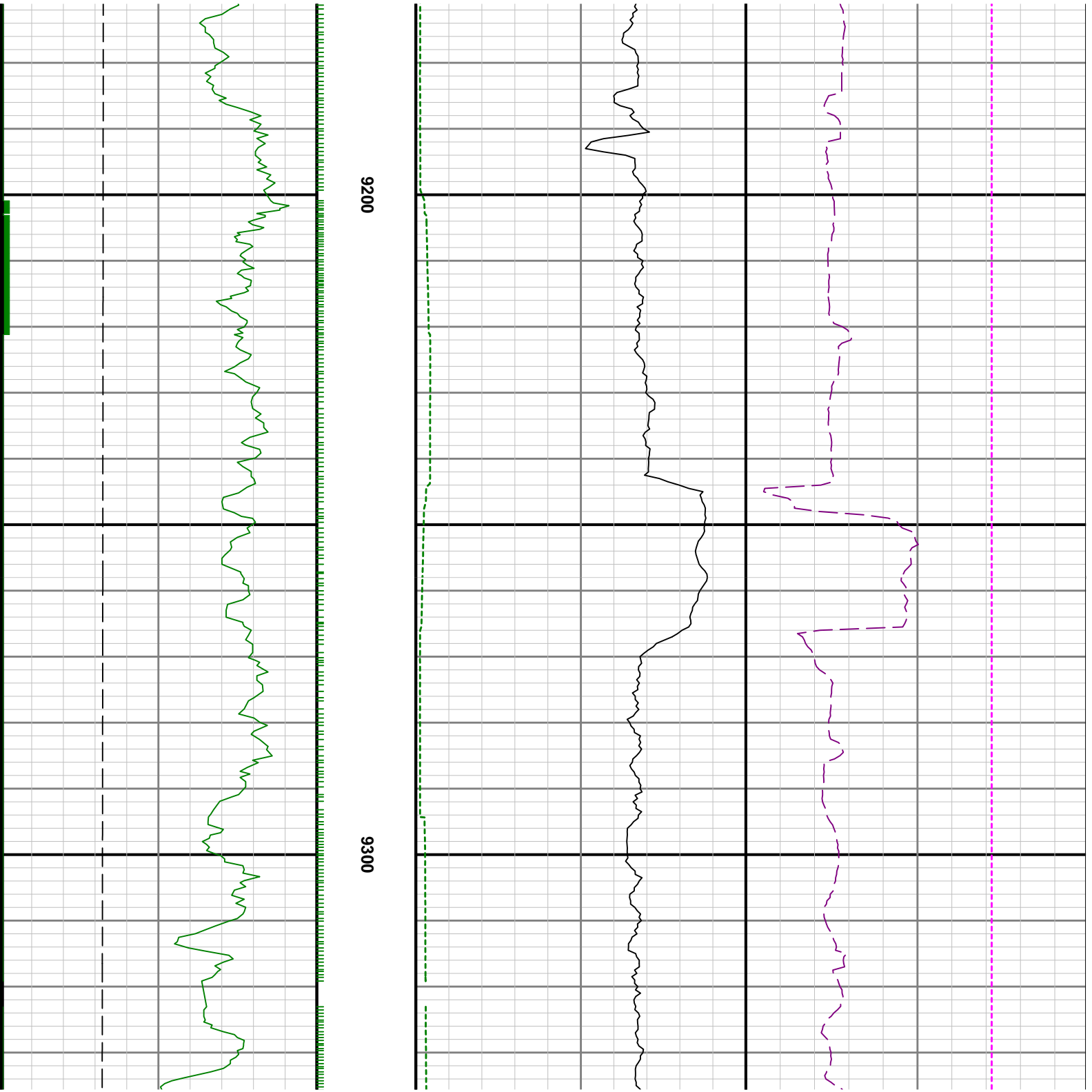


8700

8800



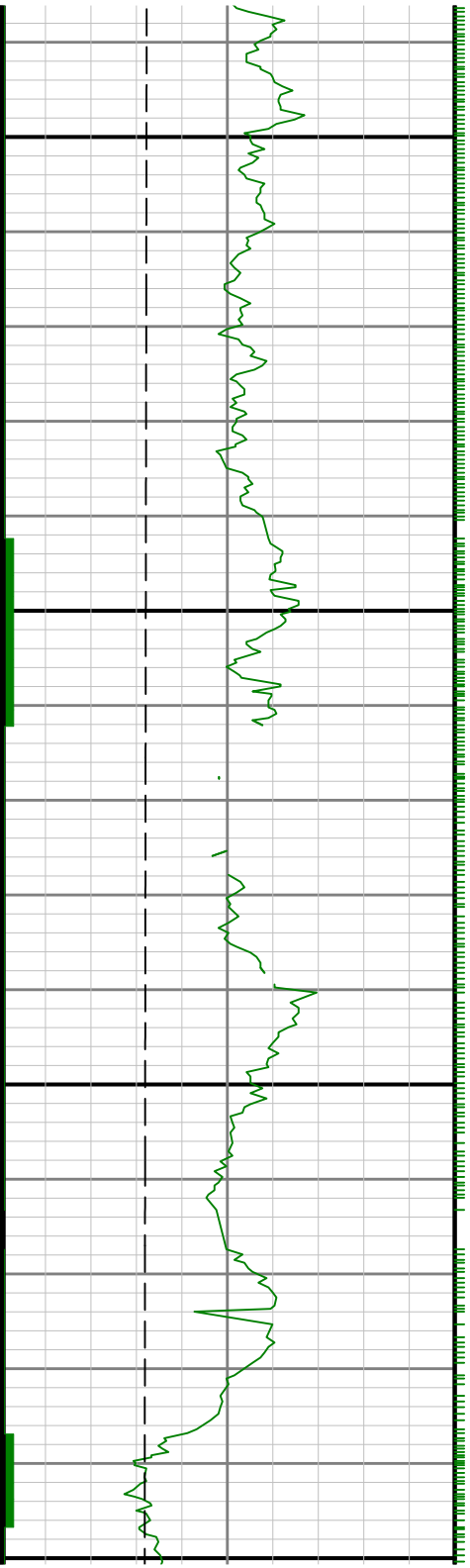


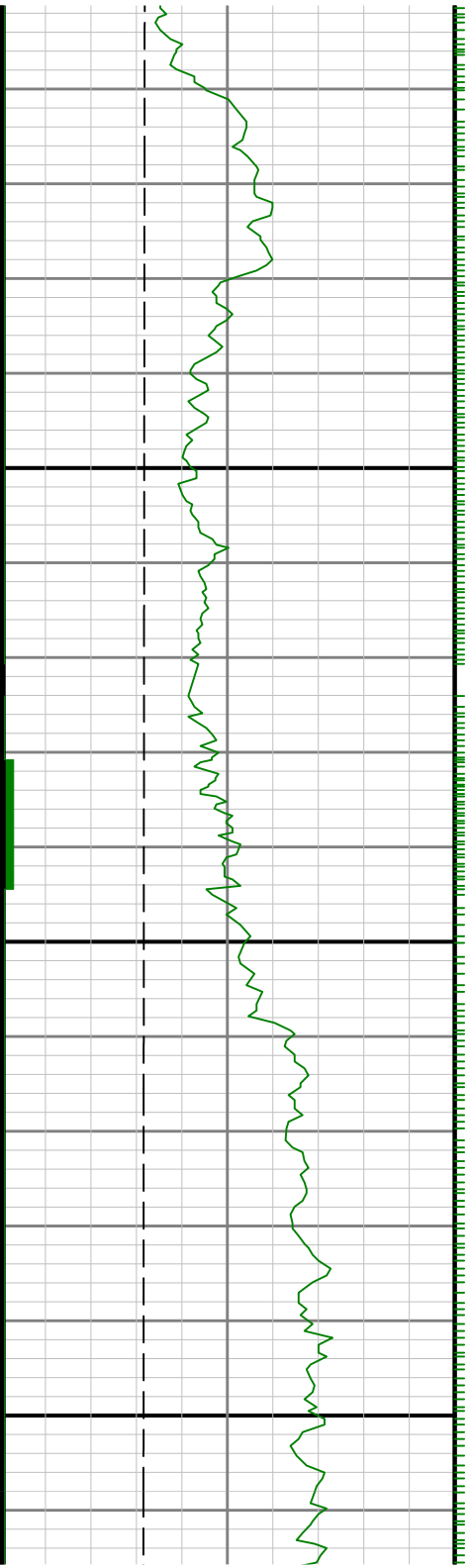




9400

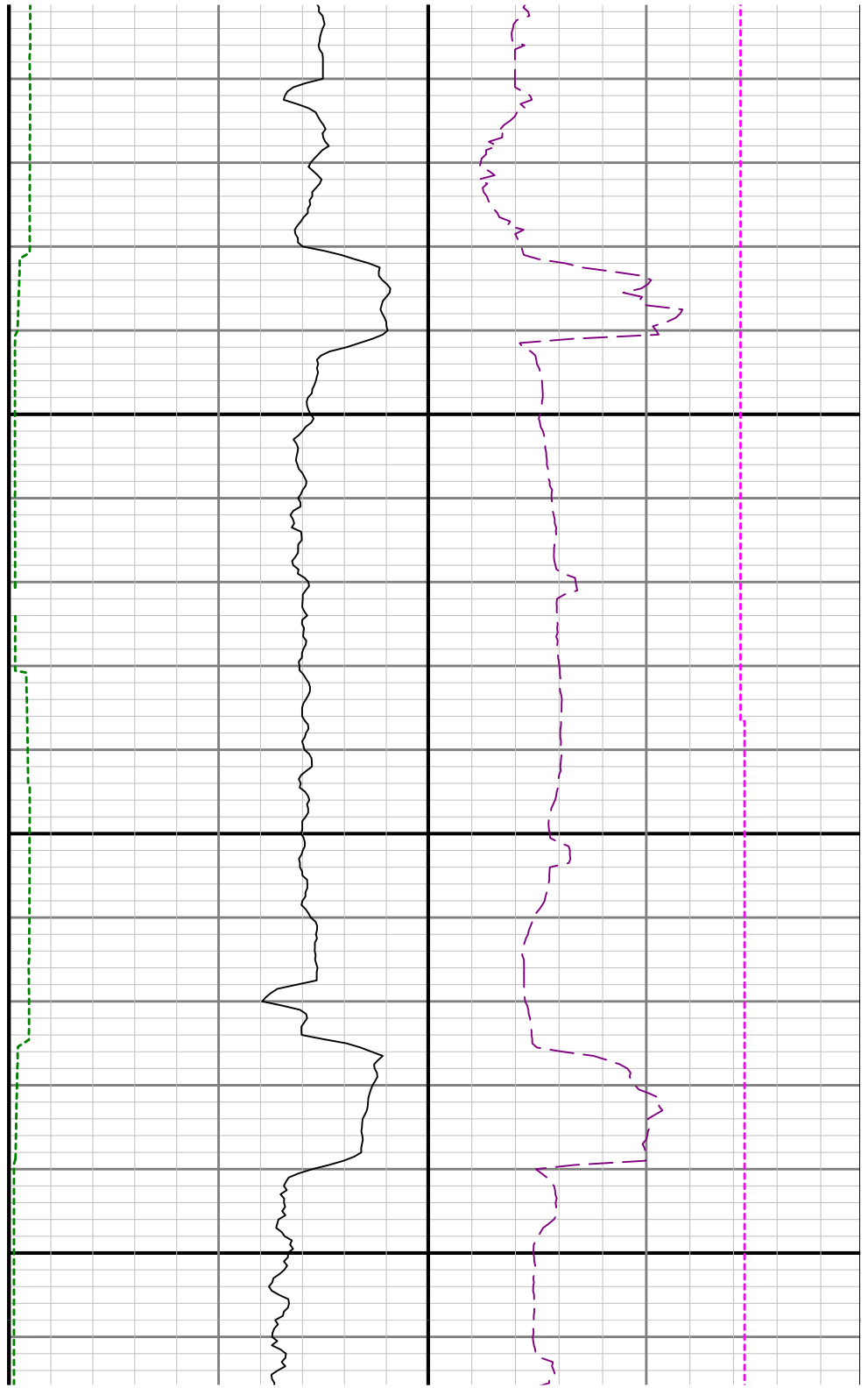
950

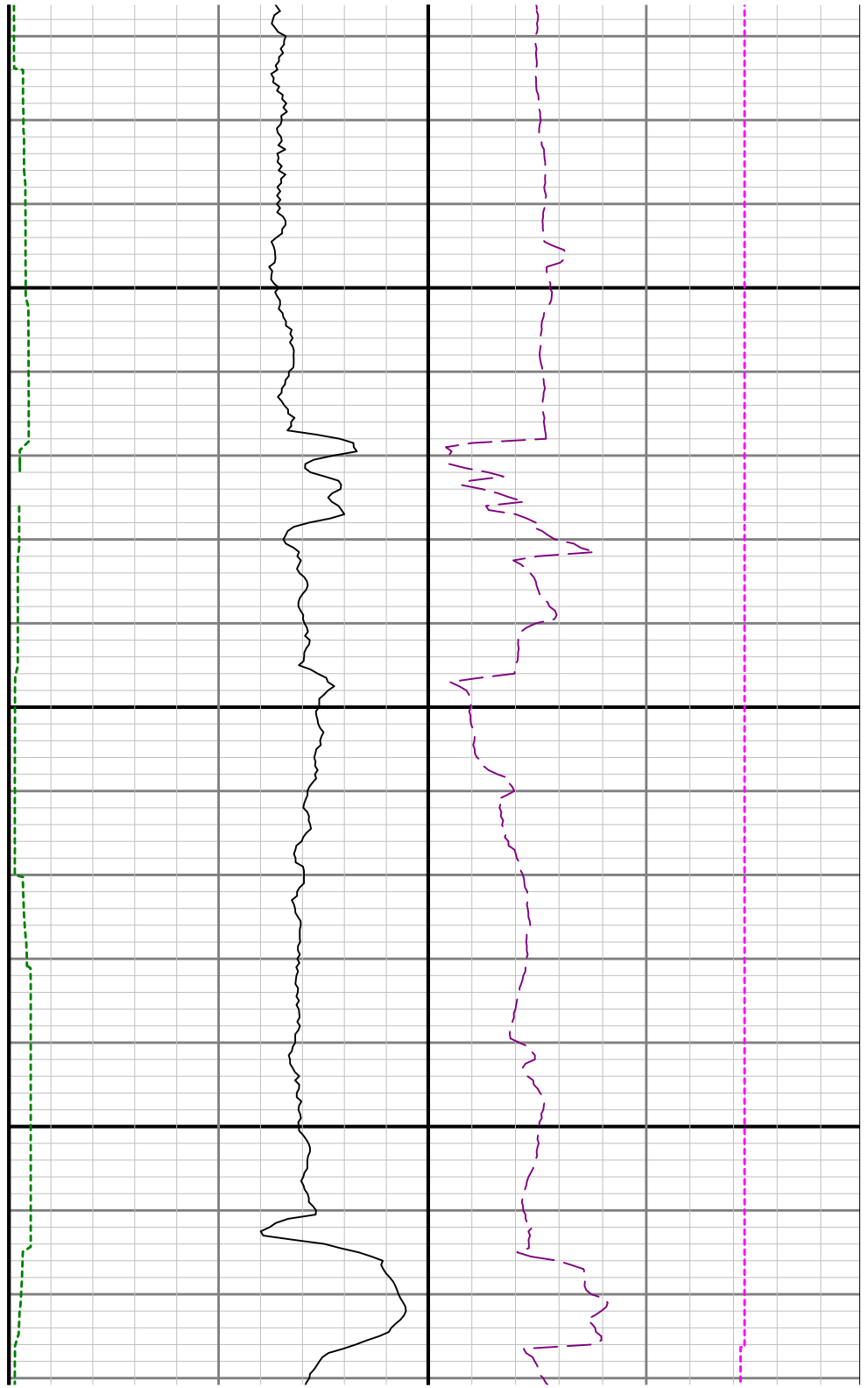
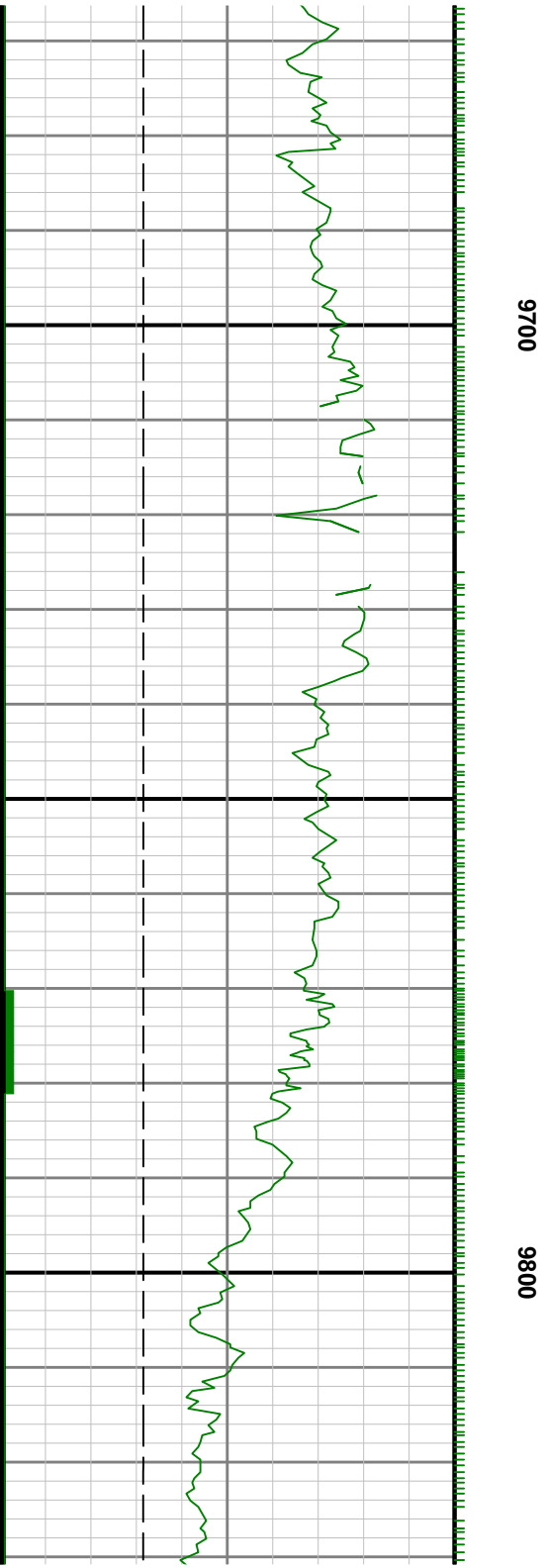


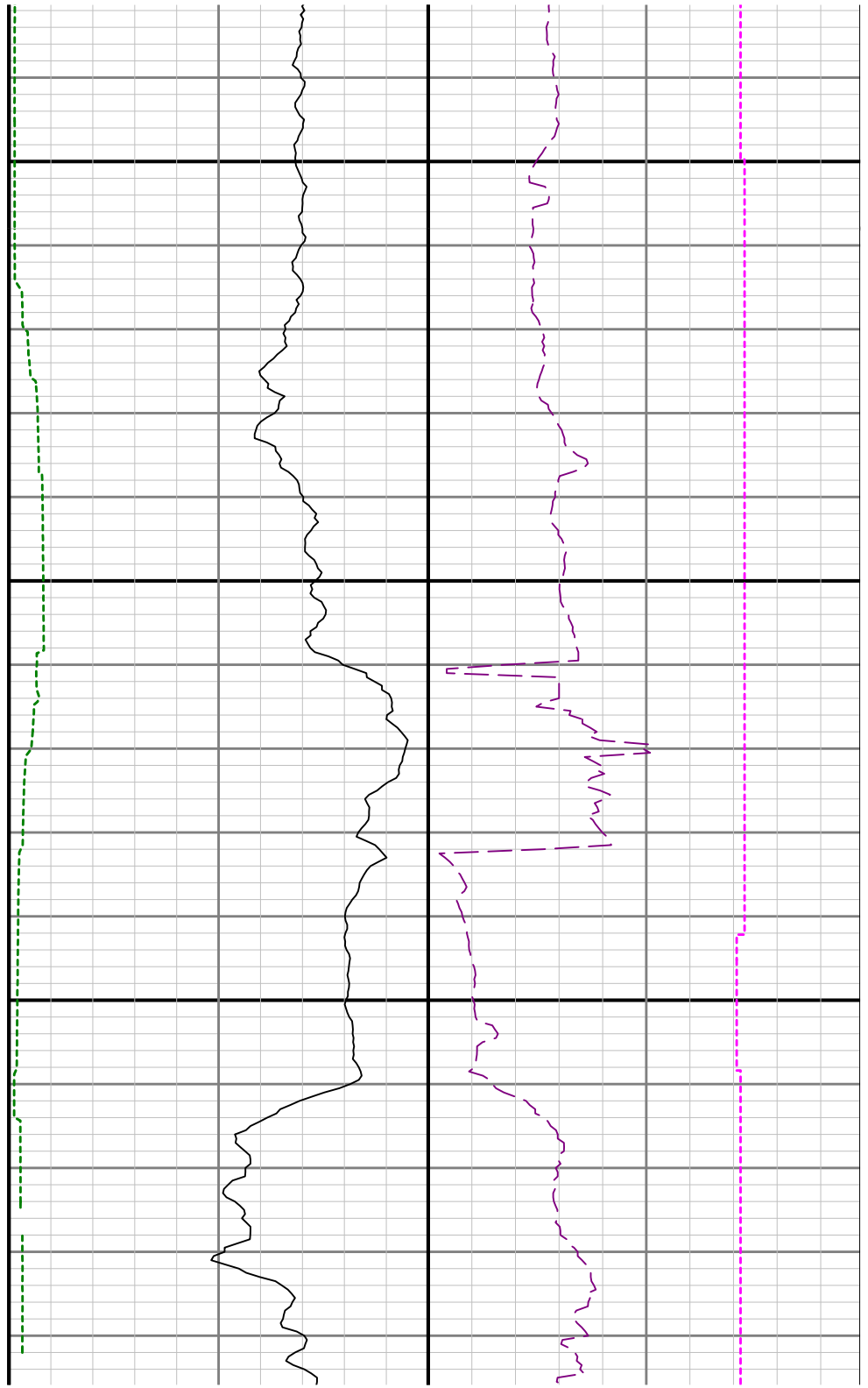
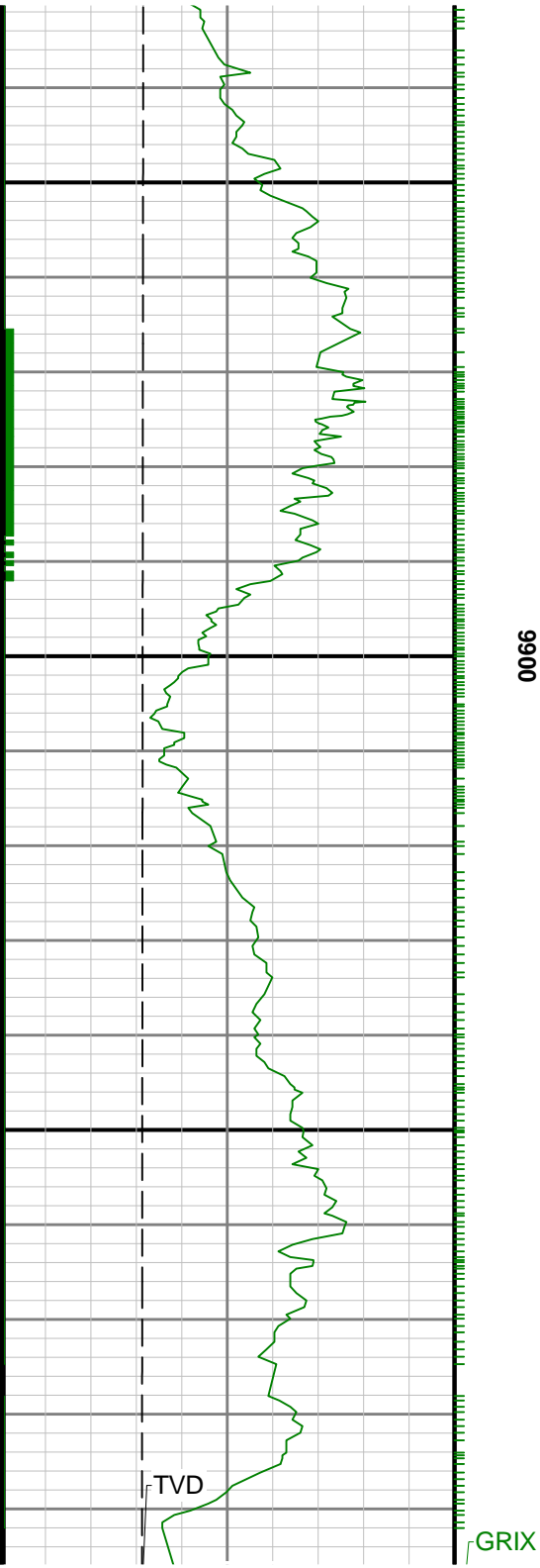


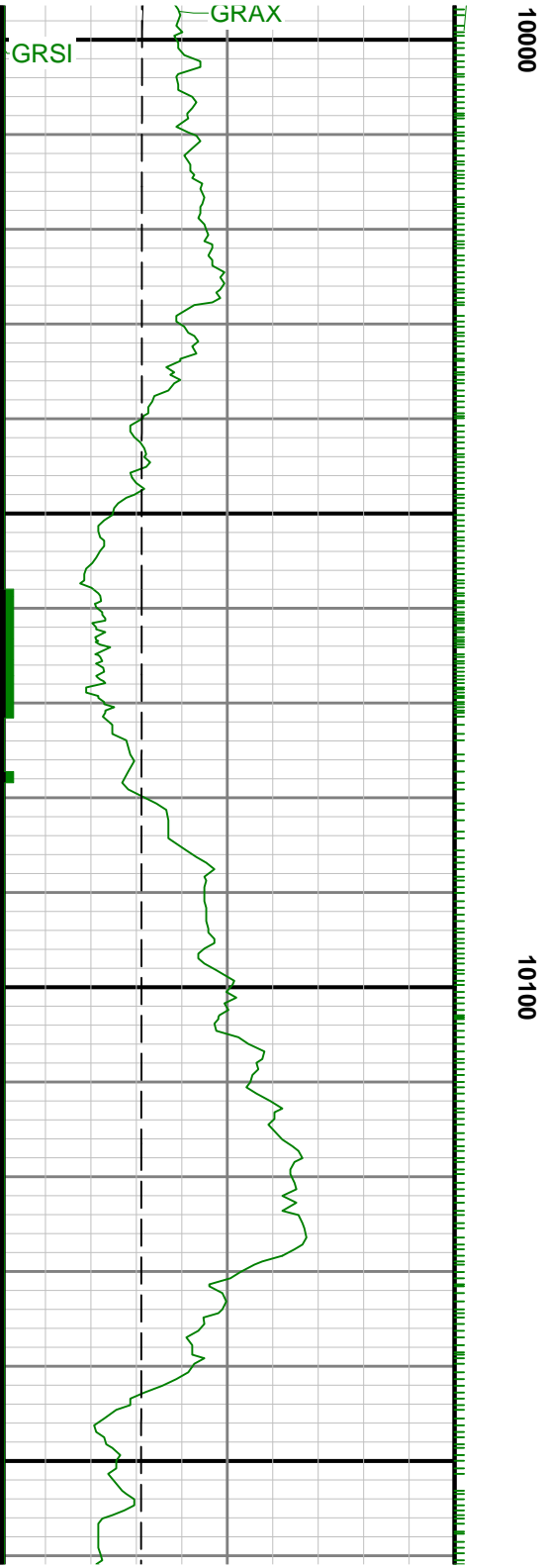
0096

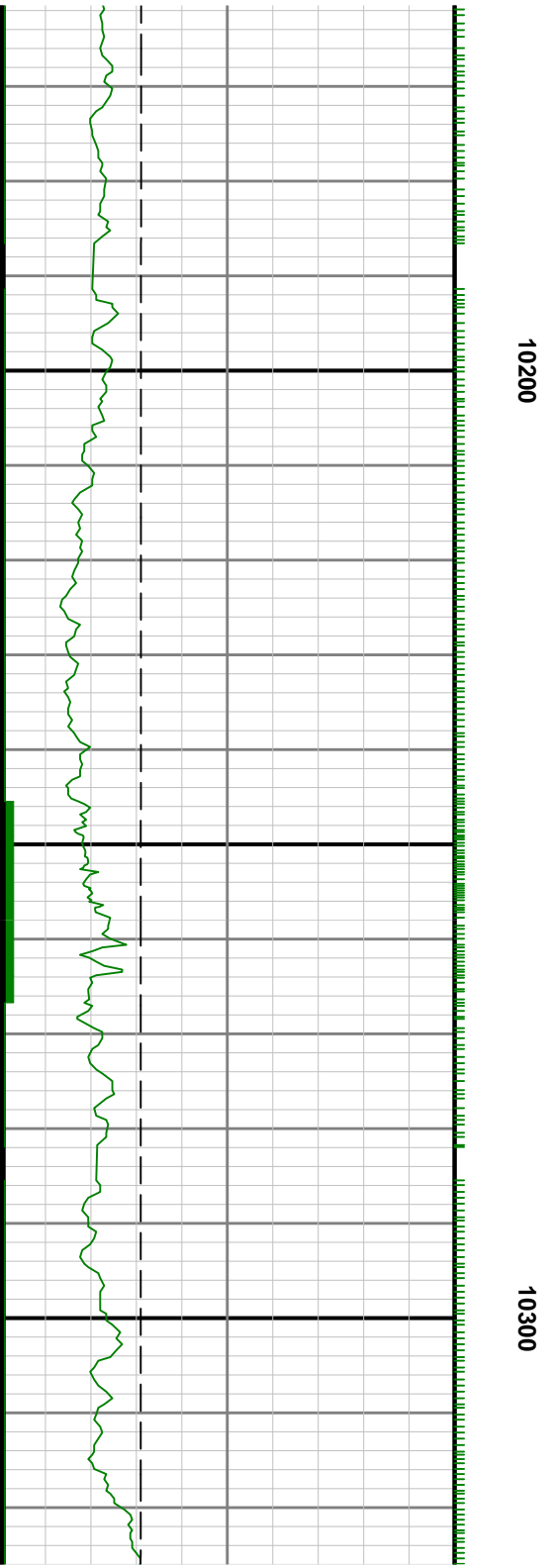
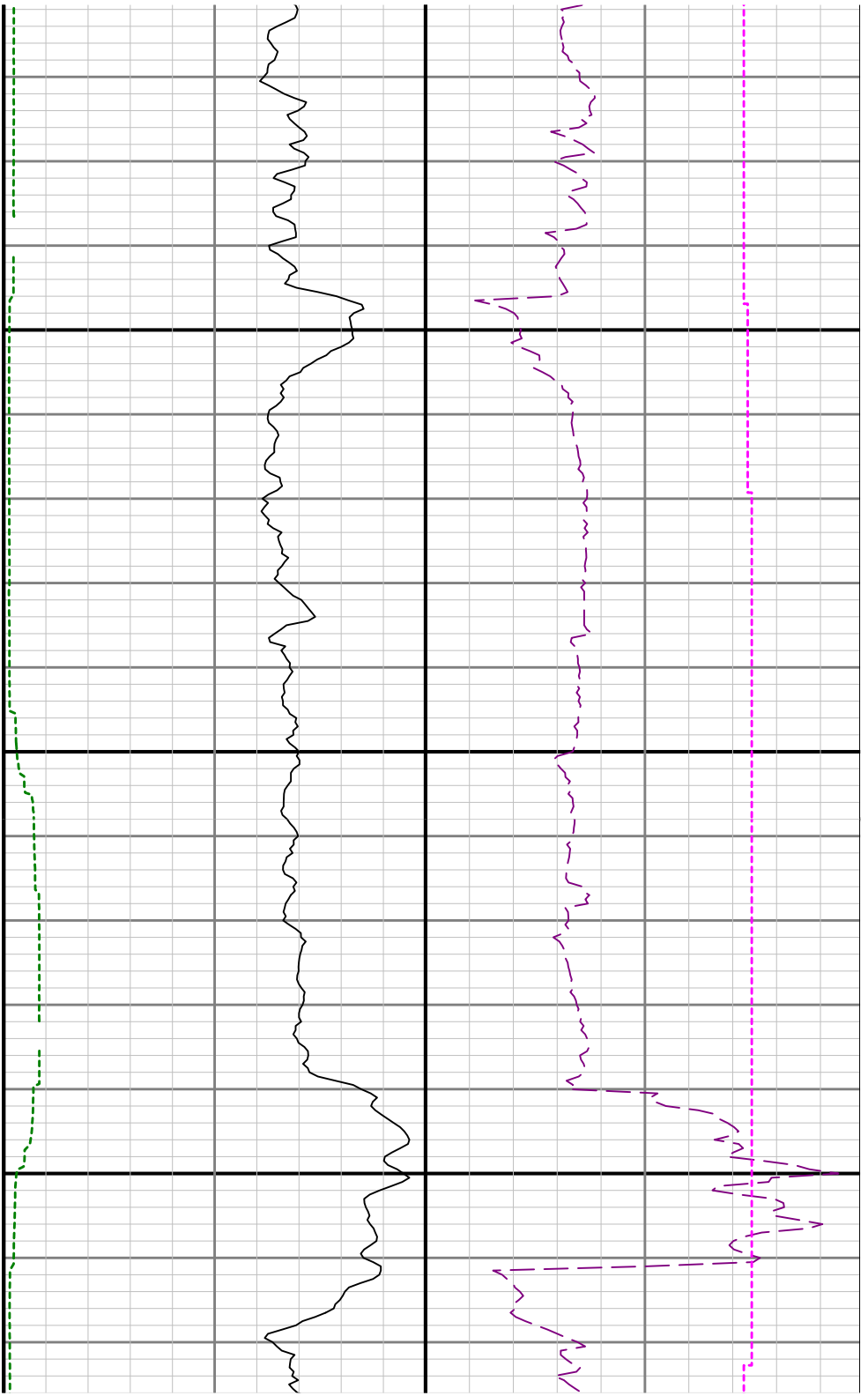
0

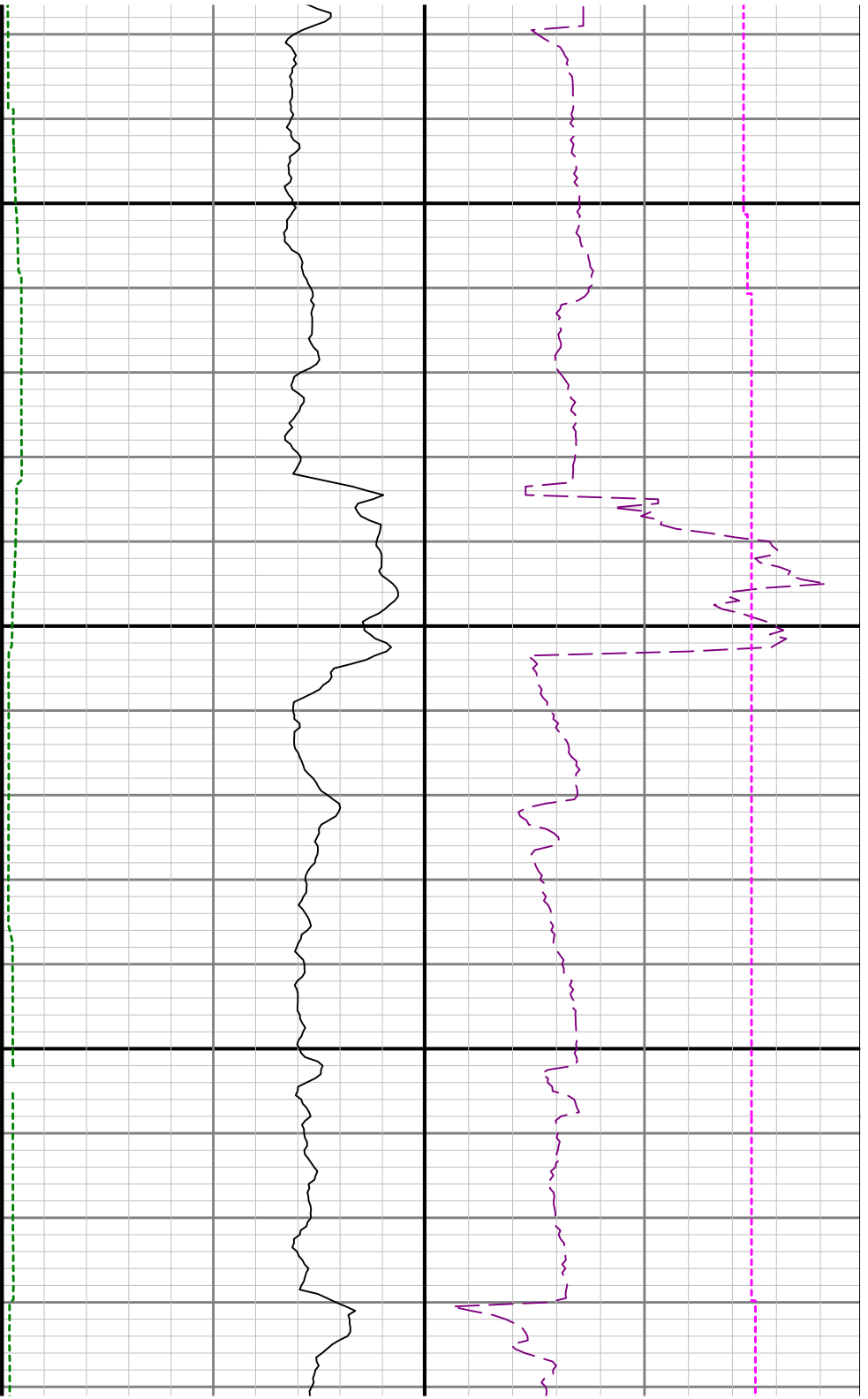




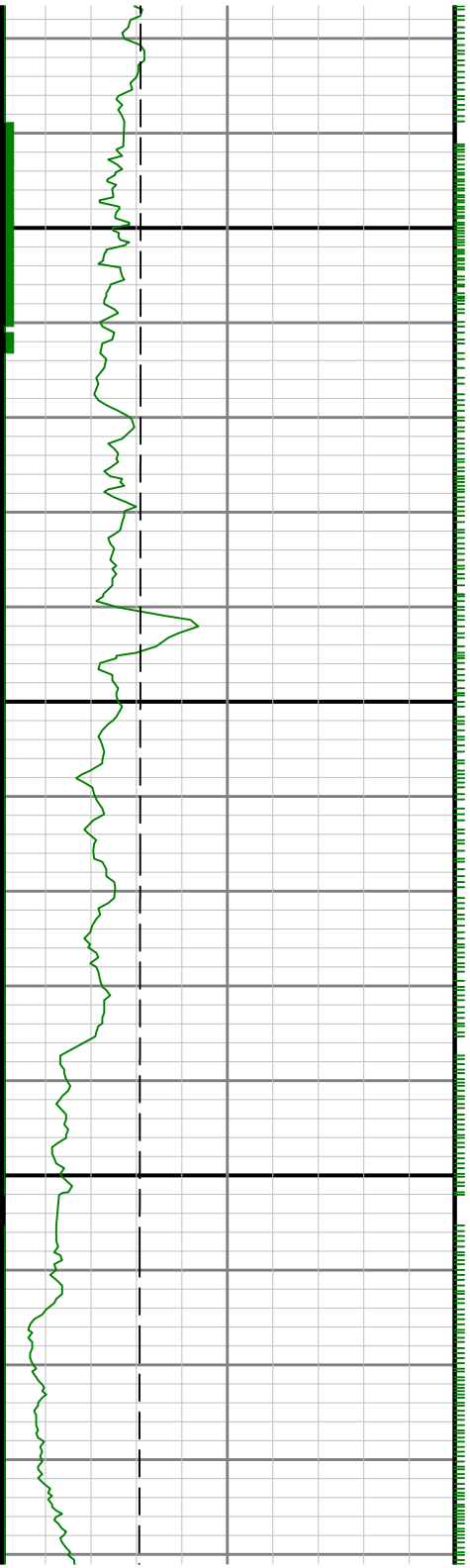


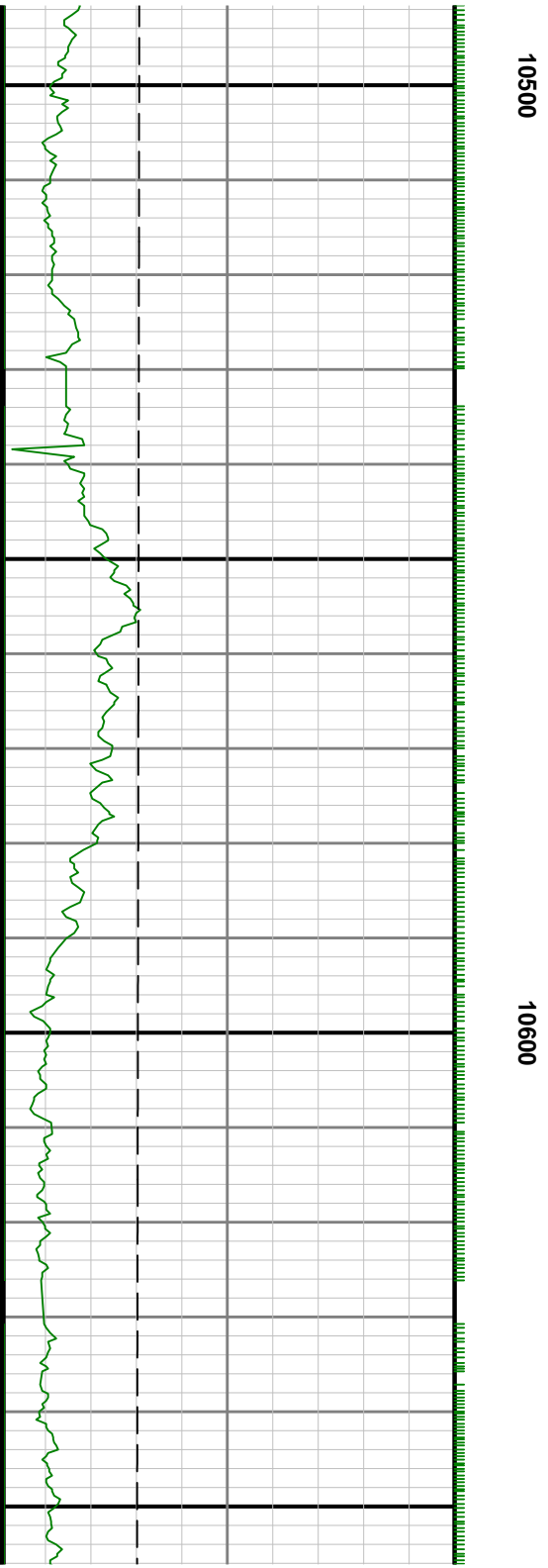
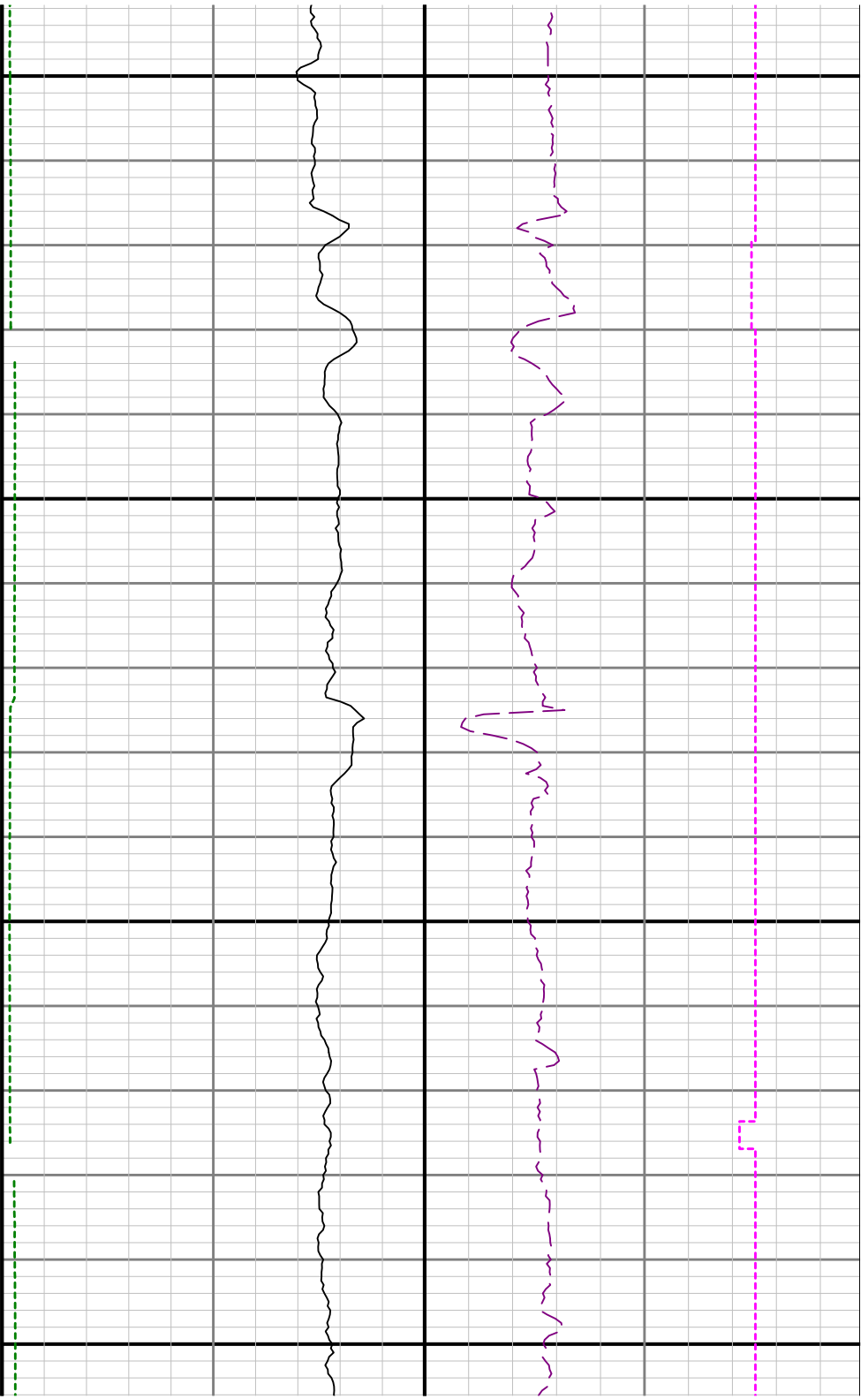


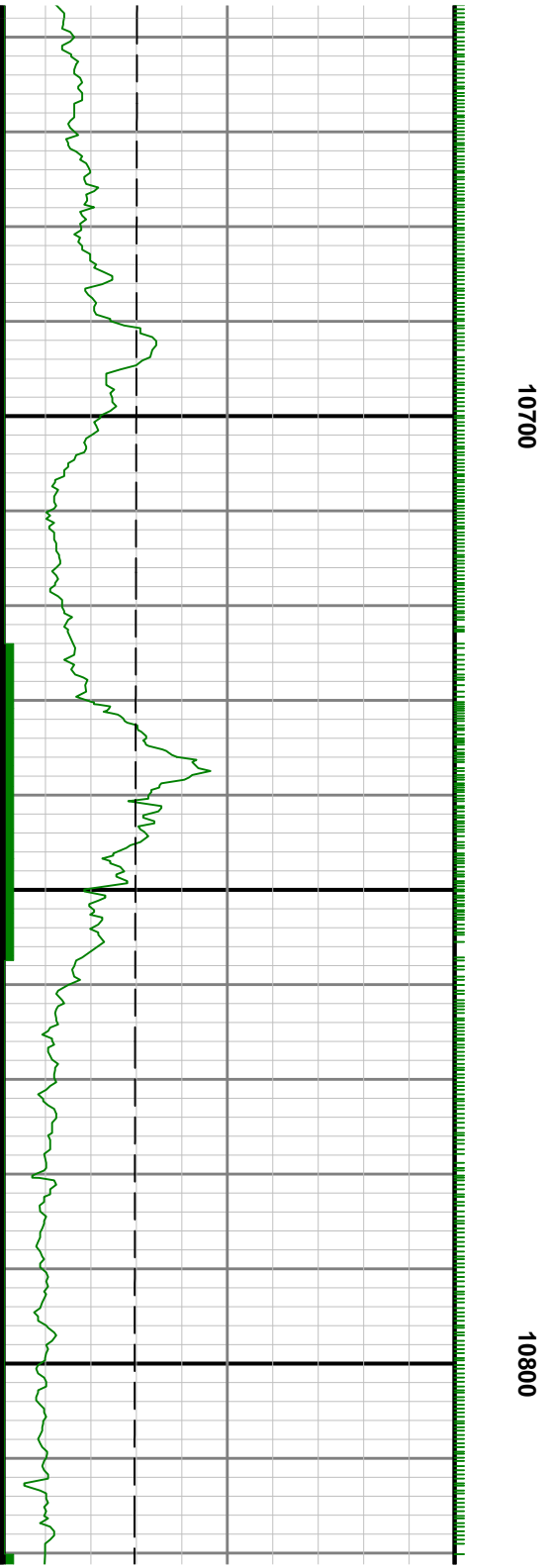


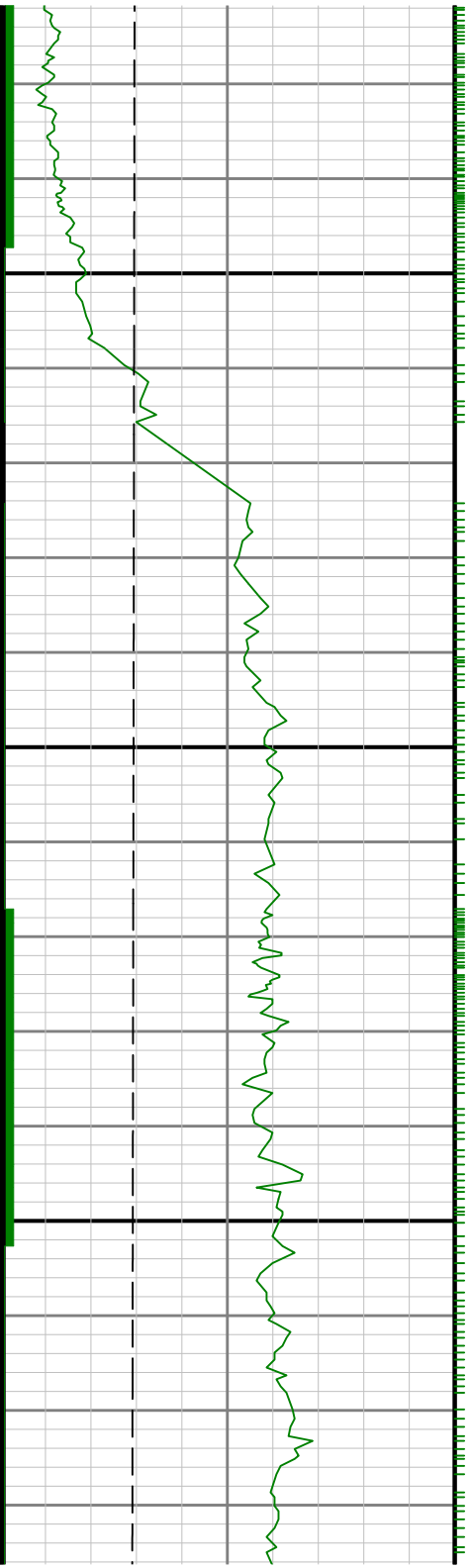


10400

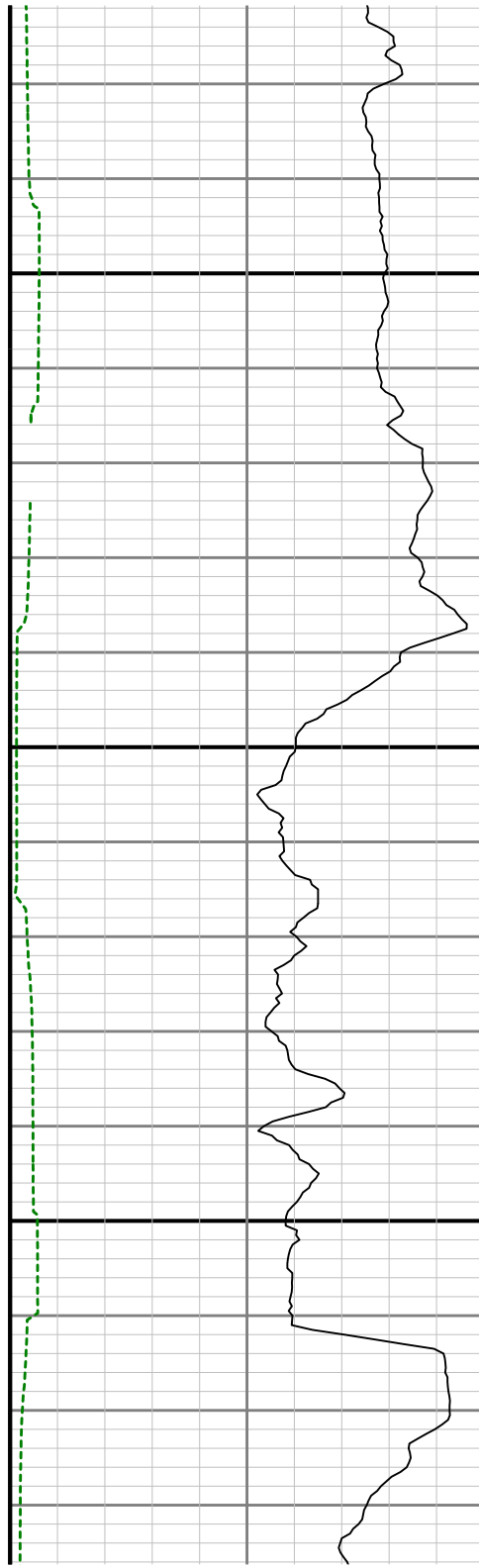


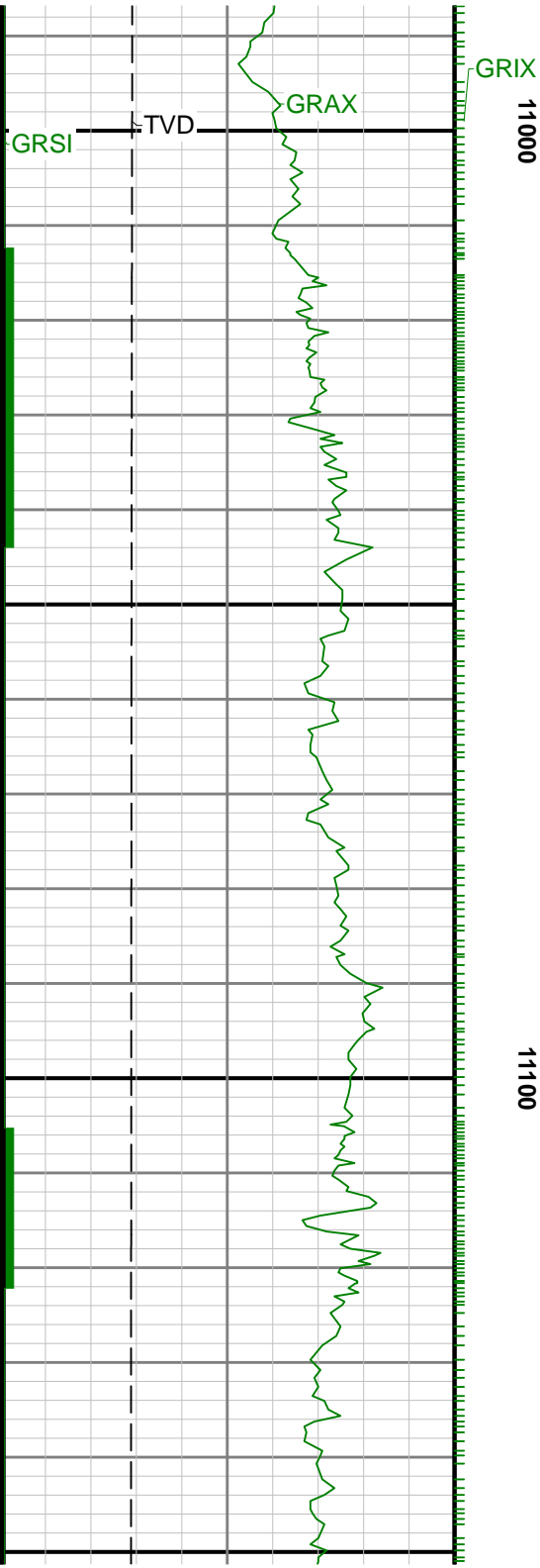


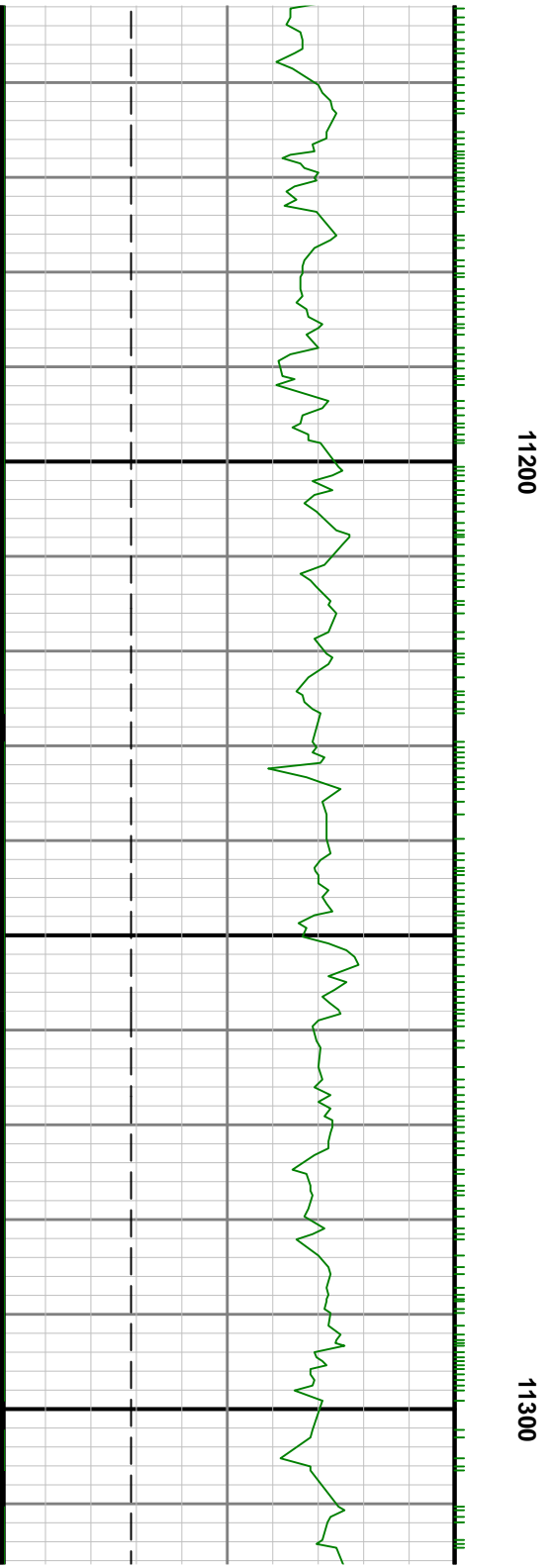
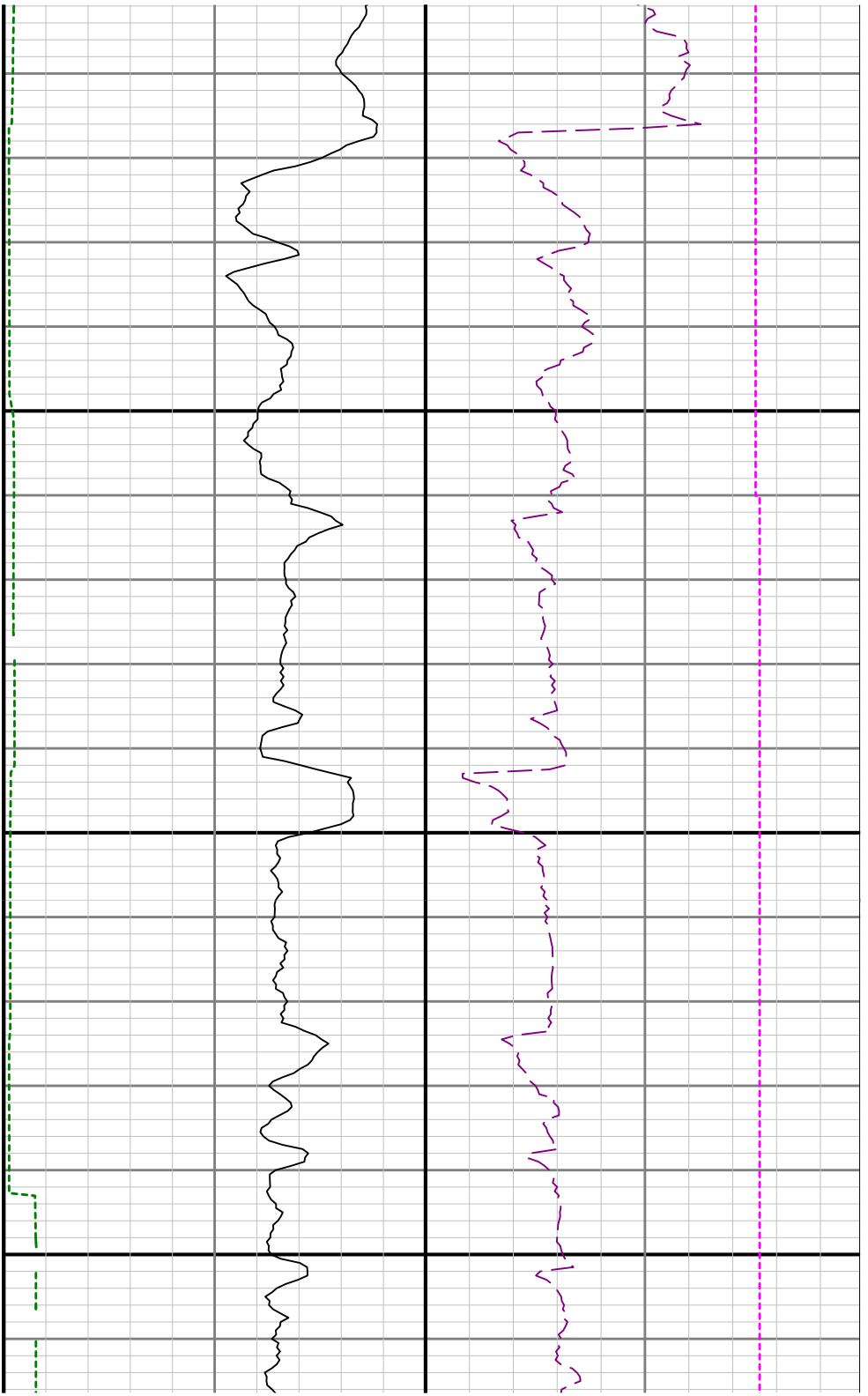


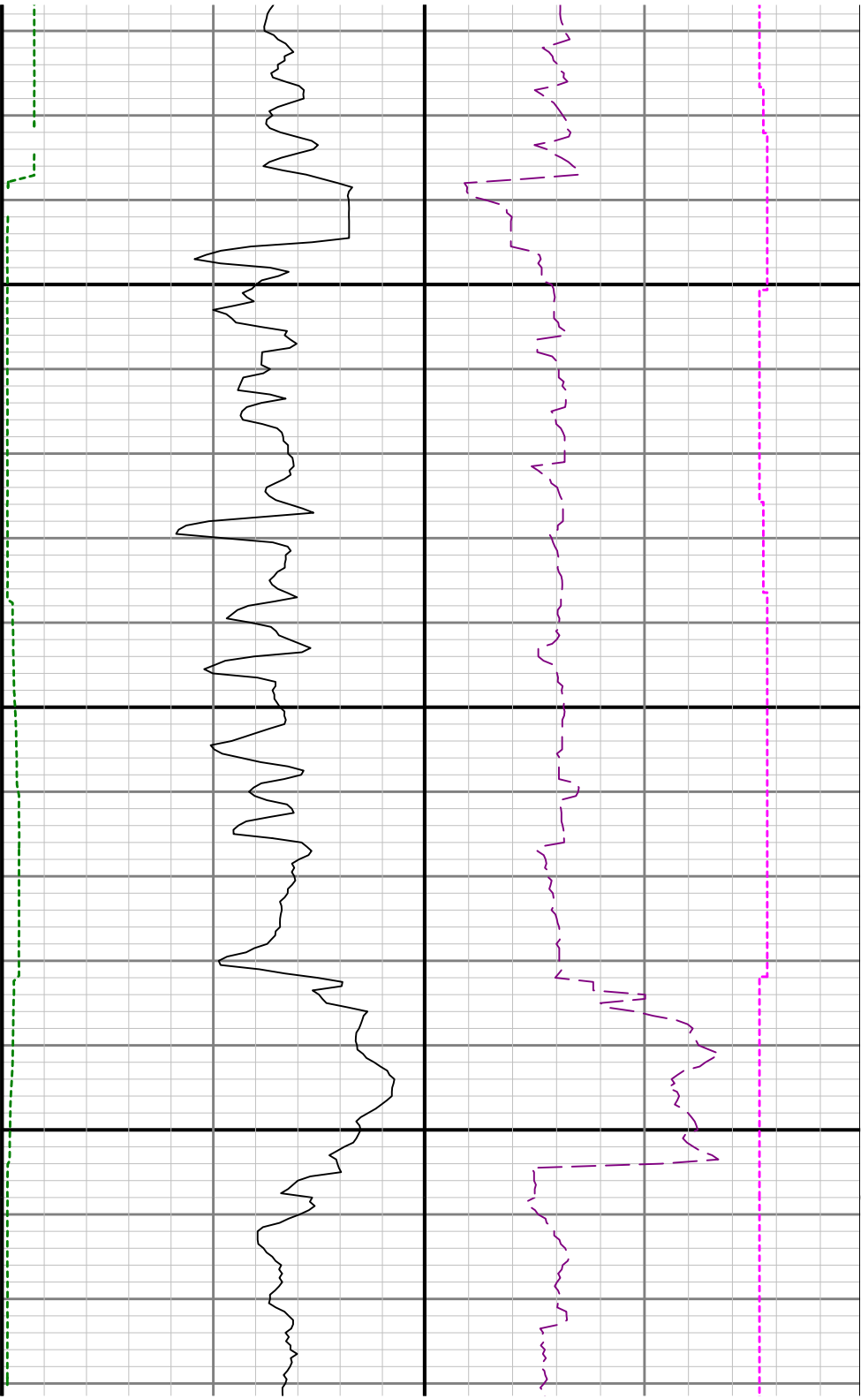


10900

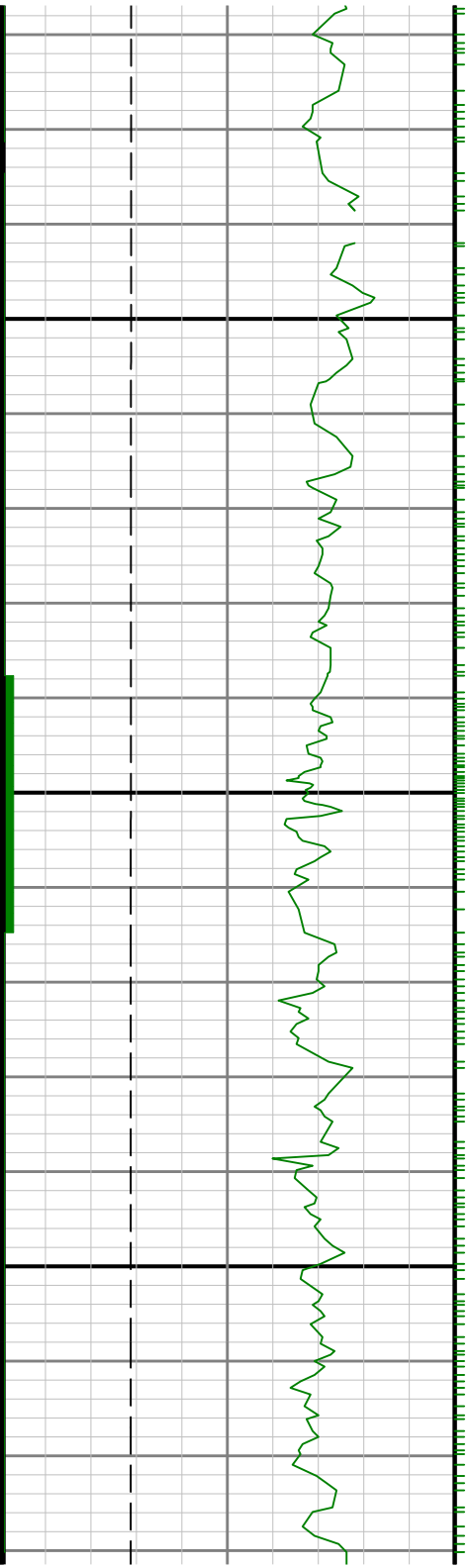


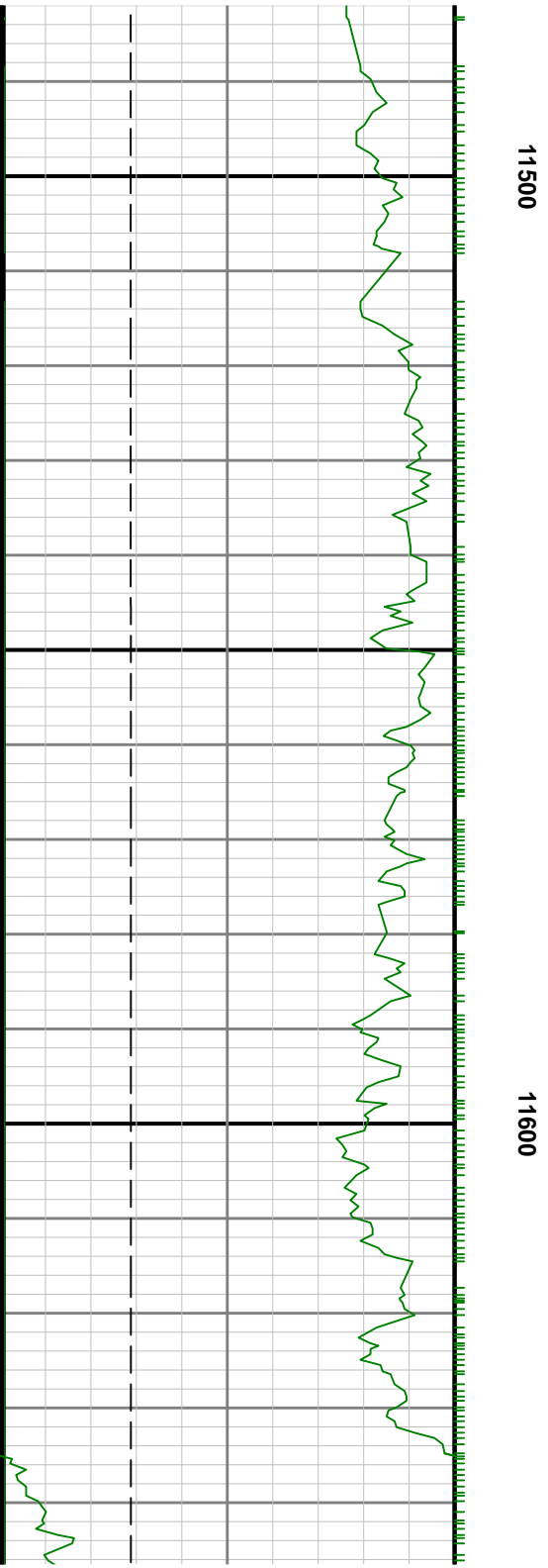
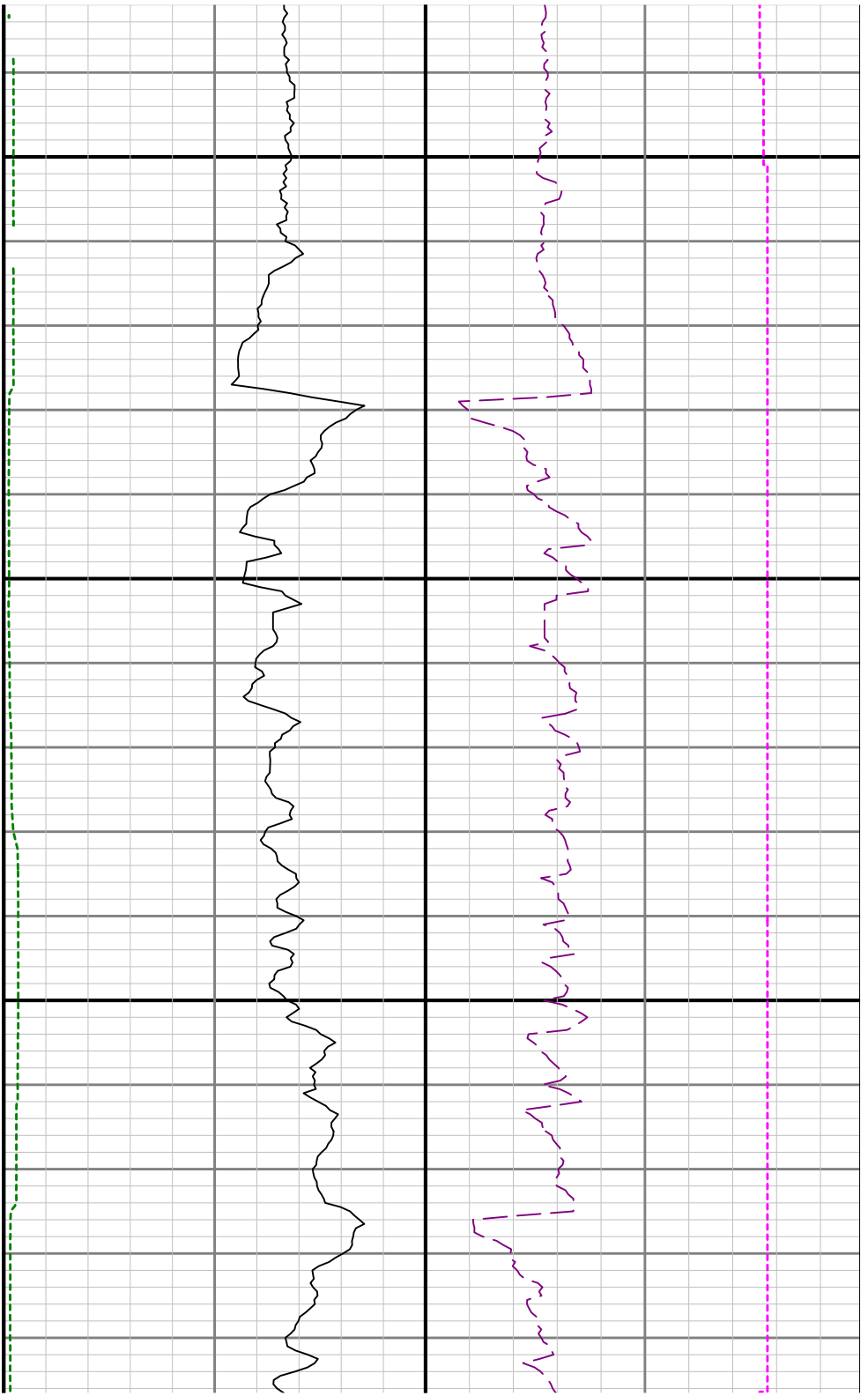


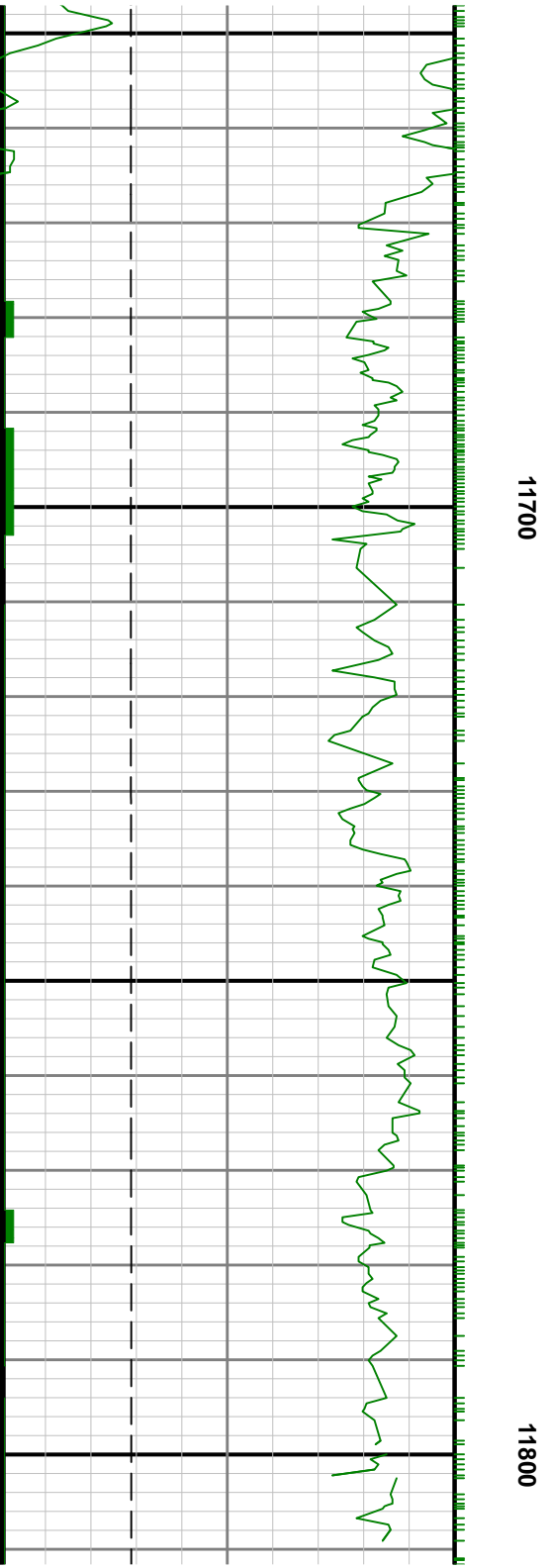
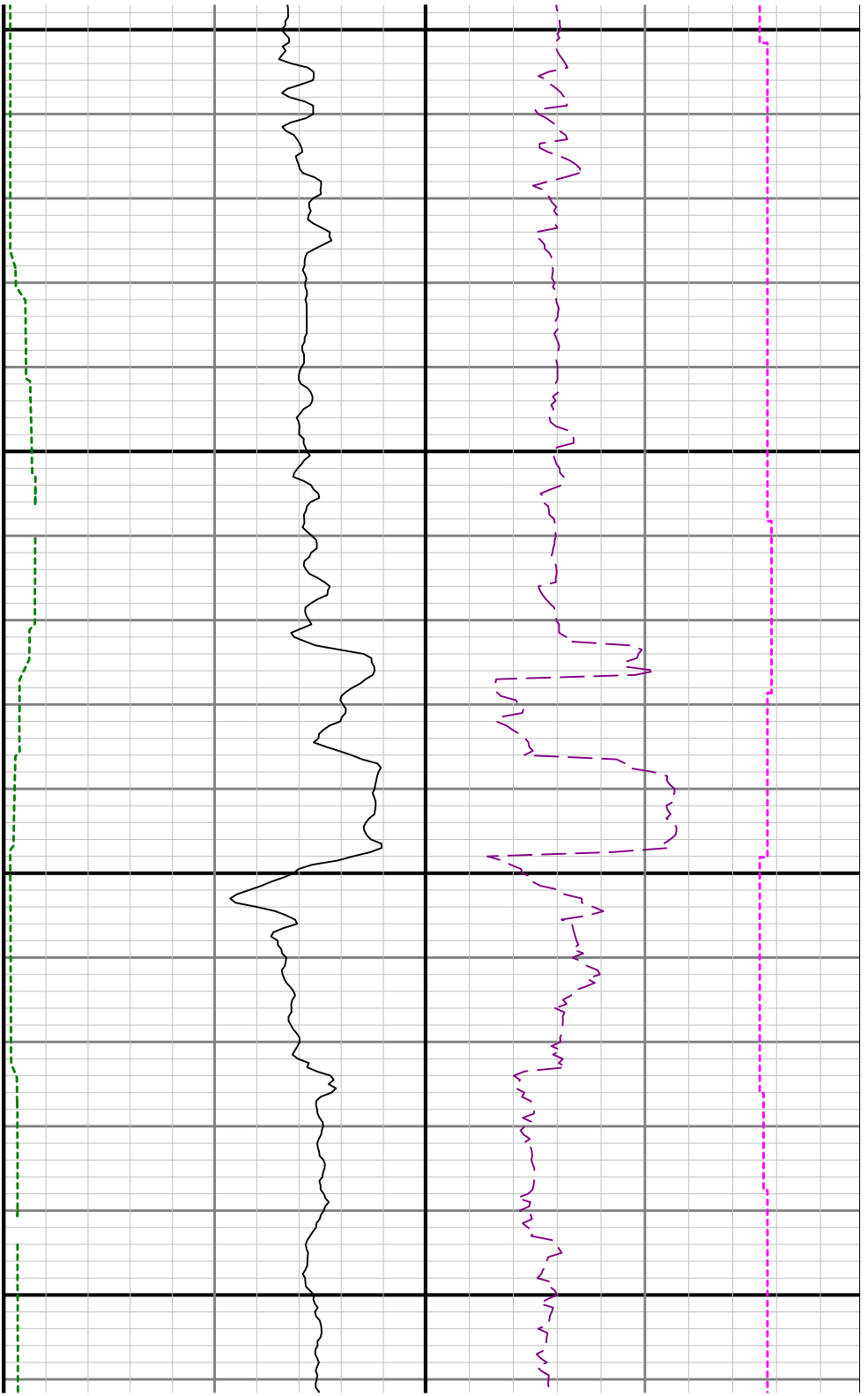




11400









11900

