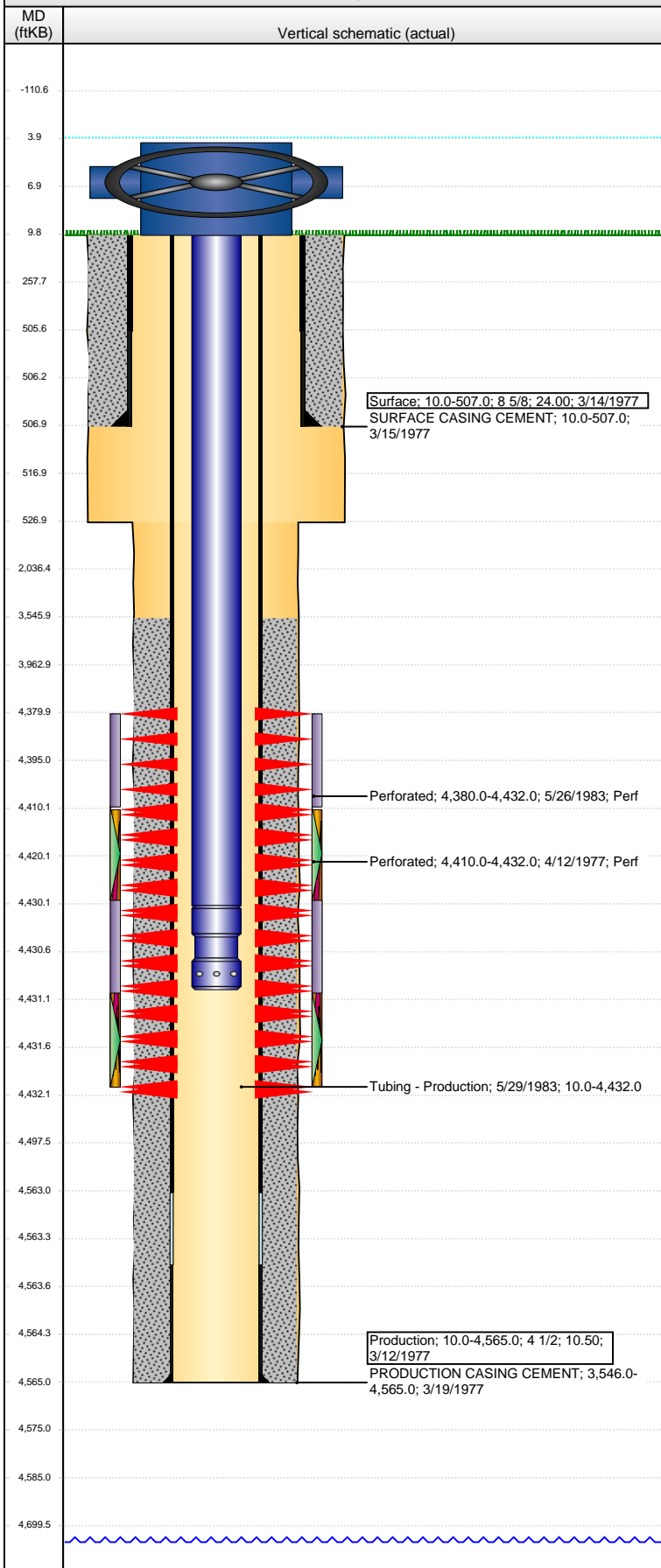


**Well Name: CRAVEN HAROLD UNIT 1**

VERTICAL - ORIGINAL HOLE, 11/11/2015 8:57:13 AM



## Well Header

API	Business Unit	District	Well Config
05-123-09107	DJ BASIN	15	VERTICAL
Original KB Elevation (ft)	KB - GL / MSL (ftKB)	Spud Date	P & A Date
4,738.00	10.00	3/14/1977	

Comment  
WELL DATA SKETCHY AND SPARSE. SURF CSG SET DEPTH DISCREPANCY (507 VS 510). TBG INFO SPARSE (NOT SURE IF TBG IS IN HOLE OR NOT BECAUSE REPORTS AREN'T COMPREHENSIVE).

Directions To Well

## Congressional Location

Quarter 1	Quarter 2	Quarter 3	Quarter 4	Section	Township	Twnshp N...	Range	Rng E/W Dir
		NW	NW	17	4	N	65	W

## Bottom Hole Location

North-South Distance (ft)	From N or S Line	East-West Distance (ft)	From E or W Line

## Plug Back Total Depths

Date	Depth (ftKB)	Method	Com
5/25/1983	4,435.0	TAG	TAG TO SAND OFF TBG
1/3/1992	4,585.0	CASED HOLE LOG	DEPTH LOGGER ON CBL

## Wellbore Sections

Section Des	Size (in)	Act Top, MD (ftKB)	Act Btm, MD (ftKB)
SURFACE	12 1/4	10.0	527.0
PRODUCTION	7 7/8	527.0	4,565.0

## Zone Statuses

Zone Name	Status Date	Status	Fluid Type	Job	Prod Method
SUSSEX	4/13/1977	PR		DRILLING/CO...	

## Casing Strings

### Surface, 507.0ftKB

Casing Description	Run Date	OD (in)	Wt/Len (l...)	Grade	Top, MD (ft...)	MD (ftKB)
Surface	3/14/1977	8 5/8	24.00		10.0	507.0

### Production, 4,565.0ftKB

Casing Description	Run Date	OD (in)	Wt/Len (l...)	Grade	Top, MD (ft...)	MD (ftKB)
Production	3/12/1977	4 1/2	10.50		10.0	4,565.0

## Cement

Description	Top Depth (ftKB)	Bottom Depth (ftKB)
SURFACE CASING CEMENT	10.0	507.0
Description	Top Depth (ftKB)	Bottom Depth (ftKB)
PRODUCTION CASING CEMENT	3,546.0	4,565.0

## Tubing Strings

Tubing Description	Run Date	String...	ID (in)	Wt (lb/ft)	Grade	Len (ft)	Set De...
Tubing - Production	5/29/1983	2 3/8	1.995	4.70	J-55	4,422.00	

## Tubing Components

Item Des	OD (in)	Wt (lb/ft)	Grade	Jts	Len (ft)	Btm (ftKB)	Btm (TVD) (ftKB)
Tubing	2 3/8	4.70	J-55	141	4,420.00	4,430.0	
Pump Seating Nipple	2 3/8	1.10			1.00	4,431.0	
Notched collar	2 3/8				1.00	4,432.0	

## Perforation Data

Zone	Bnch/St g	Entered Shot Total	Top (ftKB)	Btm (ftKB)	Date
SUSSEX, ORIGINAL HOLE		104	4,380.00	4,432.00	5/26/1983
SUSSEX, ORIGINAL HOLE		44	4,410.01	4,432.01	4/12/1977

## Stimulations & Treatments

Date	Zone	Primary Job Type
4/12/1977	SUSSEX, ORIGINAL HOLE	DRILLING/COMPLETION - ORIGINAL
Technical Result		
Tech Result Details		
Tech Result Note		
Comment		
Date	Zone	Primary Job Type
5/26/1983	SUSSEX, ORIGINAL HOLE	DRILLING/COMPLETION - ORIGINAL
Technical Result		
Tech Result Details		
Tech Result Note		
Comment		

**Well Name: CRAVEN HAROLD UNIT 1**

VERTICAL - ORIGINAL HOLE, 11/11/2015 8:57:16 AM

## Other In Hole

Run Date	Des	OD (in)	Top (ftKB)	Btm (ftKB)

## Logs

Date	Type	Top, MD (ftKB)	Btm, MD (ftKB)
1/3/1992	CEMENT BOND	3,350.0	4,585.0

