

MATCH LINE
SEE SHEET 1B

T1N, R67W

WELL BORE CONTINUES
INTO SECTION 14

N 89°41'40" W 2627.95' (M)

N 89°23'29" W 2639.92' (M)

NW. COR.
SEC. 23, T1N, R67W
FOUND 2 1/2" ALUM. CAP
NUMBER ILLEGIBLE

N. 1/4 COR.
SEC. 23, T1N, R67W
FOUND 2" ALUM. CAP
NUMBER ILLEGIBLE

NE. COR.
SEC. 23, T1N, R67W
FOUND 2 1/2" ALUM. CAP
L.S. NO. 11372

N 00°26'14" W 2636.81' (M)

SURFACE LOCATION: NAD 83
GROUND ELEVATION= 4988.3'
LATITUDE= 40.030160°
LONGITUDE= -104.855286°
LATITUDE= 40°01'48.575"
LONGITUDE= -104°51'19.030"
HEEL LOCATION: NAD 83
LATITUDE= 40.029226°
LONGITUDE= -104.854050°
LATITUDE= 40°01'45.214"
LONGITUDE= -104°51'14.580"
BOTTOM HOLE LOCATION: NAD 83
LATITUDE= 40.045617°
LONGITUDE= -104.854114°
LATITUDE= 40°02'44.222"
LONGITUDE= -104°51'14.811"

N 00°38'37" W
2619.79' (C)

N 00°35'21" W 5971' GRID
N 00°10'21" W TRUE
N 08°35'21" W MAGNETIC

N 00°46'16" W 2588.71' (M)

E. 1/4 COR.
SEC. 23, T1N, R67W
FOUND 2" ALUM. CAP
L.S. NO. 23027

23

S 89°55'58" W
2637.22' (C)

S 89°55'58" W
2645.18' (C)

W. 1/4 COR.
SEC. 23, T1N, R67W
FOUND 2 1/2" ALUM. CAP
NUMBER ILLEGIBLE

N 00°26'40" W 2637.08' (M)

N 00°38'37" W
2620.25' (C)

GARFIELD 27C-14HZ
SURFACE LOCATION

S. 1/4 COR.
SEC. 23, T1N, R67W
FOUND 2" ALUM. CAP
L.S. NO. 18475

SW. COR.
SEC. 23, T1N, R67W
FOUND 3 1/4" ALUM. CAP
L.S. NO. 13155

N 00°33'05" W
2640.35' (M)

W. 1/4 COR.
SEC. 26, T1N, R67W
FOUND 3 1/4" ALUM. CAP
L.S. NO. 37890

S 89°34'00" W 2646.28' (M)

HEEL LOCATION
290'
50'

S 89°33'55" W 2646.20' (M)

1935'

1590'

N 00°40'08" W 2603.30' (M)

SE. COR.
SEC. 23, T1N, R67W
FOUND 2" ALUM. CAP
L.S. NO. 9644

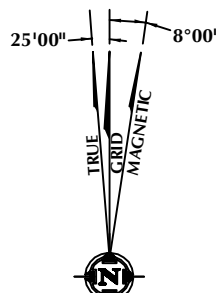
N 00°07'49" E
2626.05' (M)

E. 1/4 COR.
SEC. 26, T1N, R67W
FOUND 2" ALUM. CAP
L.S. NO. 9644

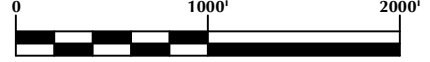
26

NOTES:

- ▲ INDICATES FOUND SECTION CORNER
- INDICATES CALCULATED CORNER
- ELEVATION BASED ON NAVD88 (GEOID09)
- BASIS OF BEARING DERIVED FROM COLORADO COORDINATE SYSTEM 1983 NORTH ZONE UNLESS OTHERWISE NOTED.
- ALL MEASURED DISTANCES ARE GRID.
COMBINED SCALE FACTOR: .99972876
- OPERATOR: ROB WILSON / PDOP = 1.2
- SEE ADDENDUM TO WELL LOCATION CERTIFICATE FOR EXISTING IMPROVEMENTS WITHIN 500' OF THE WELL PAD.
- WELL FOOTAGES ARE MEASURED AT RIGHT ANGLES TO THE SECTION LINES.
- THE BOTTOM OF HOLE BEARS N00°35'21"W, 5971' FROM THE HEEL LOCATION.



NOTE:
MAGNETIC NORTH IS CURRENT AS OF 7/29/2015.
MAGNETIC NORTH CHANGES WEST 0°06' PER YEAR.



SCALE: 1" = 1000'

CERTIFICATE OF SURVEYOR:

THIS IS TO CERTIFY THAT THE ABOVE PLAT WAS PREPARED FROM FIELD NOTES OF ACTUAL SURVEY MADE BY ME OR UNDER MY SUPERVISION AND THAT THE SAME ARE TRUE AND CORRECT TO THE BEST OF MY KNOWLEDGE AND BELIEF. THIS CERTIFICATE DOES NOT REPRESENT A LAND SURVEY PLAT OR IMPROVEMENT SURVEY PLAT AS DEFINED BY C.S. 38-51-102 AND CANNOT BE RELIED UPON TO DETERMINE OWNERSHIP.

Benjamin J. Reenders
PROFESSIONAL LAND SURVEYOR
8/5/15

BENJAMIN J. REENDERS
PROFESSIONAL LAND SURVEYOR
COLORADO REGISTRATION NUMBER 1836

NOTICE:
ACCORDING TO COLORADO STATE LAW YOU MUST COMMENCE ANY LEGAL ACTION BASED UPON ANY DEFECT IN THIS SURVEY WITHIN THREE YEARS AFTER YOU FIRST DISCOVER SUCH DEFECT. IN NO EVENT MAY ANY ACTION BASED UPON ANY DEFECT IN THIS SURVEY BE COMMENCED MORE THAN TEN YEARS FROM THE DATE ON THE CERTIFICATION SHOWN HEREON.

WELL PAD - GARFIELD 15C-35HZ

GARFIELD 27C-14HZ
WELL LOCATION CERTIFICATE
290' FSL & 1935' FEL SWSE (SURFACE)
LOCATED IN SECTION 23
50' FNL & 1590' FEL NWNE (HEEL)
LOCATED IN SECTION 26
700' FSL & 1578' FEL SWSE (BOTTOM)
LOCATED IN SECTION 14
T1N, R67W, 6TH P.M.
WELD COUNTY, COLORADO

Kerr-McGee Oil &
Gas Onshore L.P.
1099 18th Street
Denver, Colorado 80202



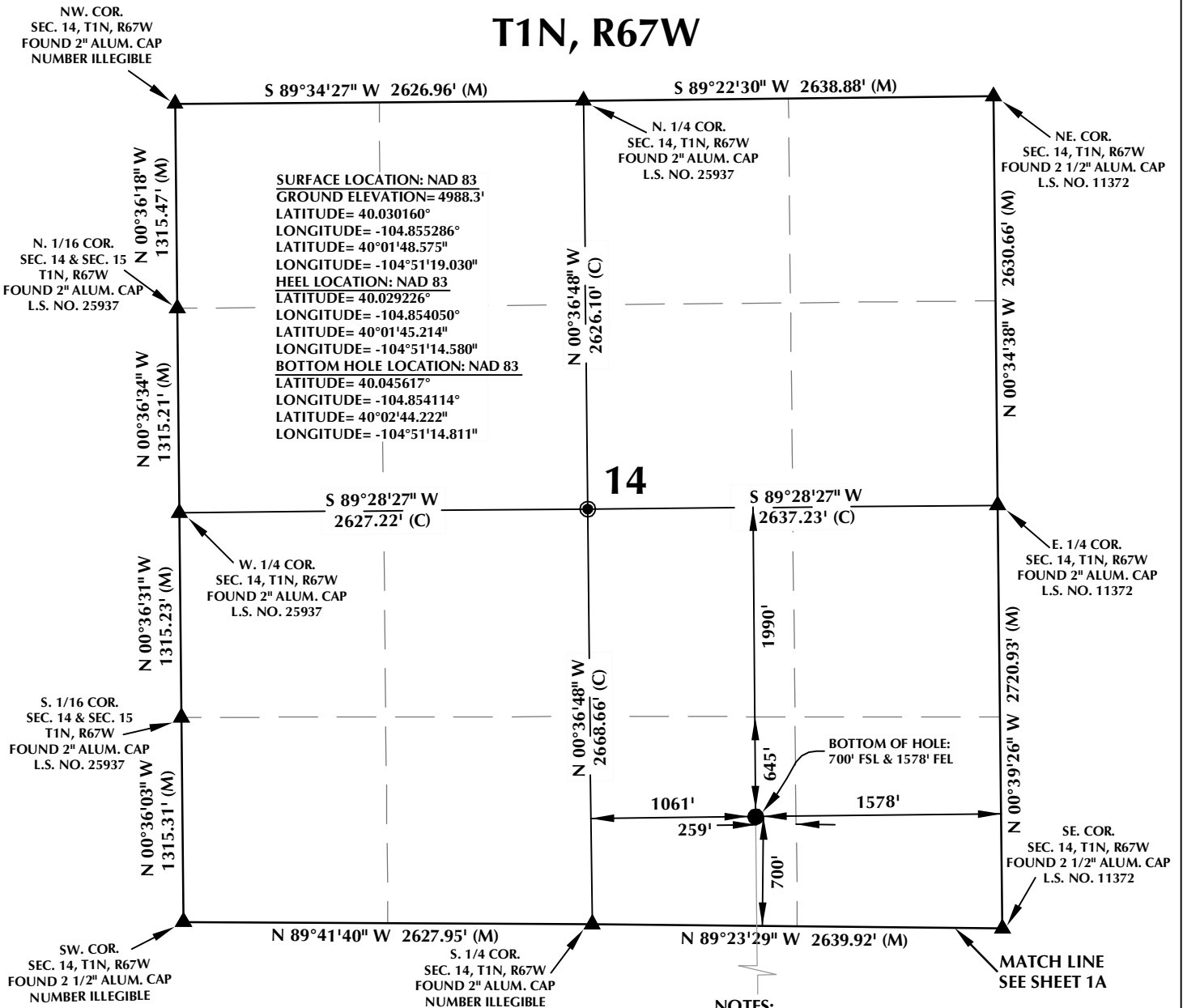
CONSULTING, LLC

SHERIDAN OFFICE
1095 Saberton Avenue
Sheridan, Wyoming 82801
Phone 307-674-0609

LOVELAND OFFICE
1635 Foxtrail Drive, Suite 204
Loveland, Colorado 80538
Phone 970-776-4331

DRAFTED BY:	LMO	CHECKED BY:	BJR	SHEET NO: 1A 1A OF 1
DATE DRAFTED:	8/5/15	DATE SURVEYED:	5/7/15	
REVISED:		FILE NAME:	15-42	

T1N, R67W



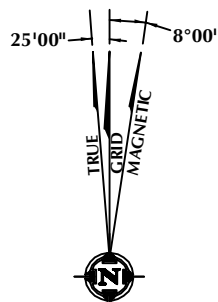
CERTIFICATE OF SURVEYOR:

THIS IS TO CERTIFY THAT THE ABOVE PLAT WAS PREPARED FROM FIELD NOTES OF ACTUAL SURVEY MADE BY ME OR UNDER MY SUPERVISION AND THAT THE SAME ARE TRUE AND CORRECT TO THE BEST OF MY KNOWLEDGE AND BELIEF. THIS CERTIFICATE DOES NOT REPRESENT A LAND SURVEY PLAT OR IMPROVEMENT SURVEY PLAT AS DEFINED BY C.S. 38-51-102 AND CANNOT BE RELIED UPON TO DETERMINE OWNERSHIP.

Benjamin J. Reenders
 BENJAMIN J. REENDERS
 PROFESSIONAL LAND SURVEYOR
 COLORADO REGISTRATION NUMBER 18336

8/5/15

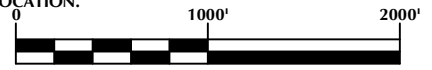
NOTICE: ACCORDING TO COLORADO STATE LAW YOU MUST COMMENCE ANY LEGAL ACTION BASED UPON ANY DEFECT IN THIS SURVEY WITHIN THREE YEARS AFTER YOU FIRST DISCOVER SUCH DEFECT. IN NO EVENT MAY ANY ACTION BASED UPON ANY DEFECT IN THIS SURVEY BE COMMENCED MORE THAN TEN YEARS FROM THE DATE ON THE CERTIFICATION SHOWN HEREON.



NOTE: MAGNETIC NORTH IS CURRENT AS OF 7/29/2015. MAGNETIC NORTH CHANGES WEST 0°06' PER YEAR.

NOTES:

- ▲ INDICATES FOUND SECTION CORNER
- INDICATES CALCULATED CORNER
- ELEVATION BASED ON NAVD88 (GEOID09)
- BASIS OF BEARING DERIVED FROM COLORADO COORDINATE SYSTEM 1983 NORTH ZONE UNLESS OTHERWISE NOTED.
- ALL MEASURED DISTANCES ARE GRID.
- COMBINED SCALE FACTOR: .99972876
- OPERATOR: ROB WILSON / PDOP = 1.2
- SEE ADDENDUM TO WELL LOCATION CERTIFICATE FOR EXISTING IMPROVEMENTS WITHIN 500' OF THE WELL PAD.
- WELL FOOTAGES ARE MEASURED AT RIGHT ANGLES TO THE SECTION LINES.
- THE BOTTOM OF HOLE BEARS N00°35'21"W, 5971' FROM THE HEEL LOCATION.



SCALE: 1" = 1000'

WELL PAD - GARFIELD 15C-35HZ

GARFIELD 27C-14HZ
 WELL LOCATION CERTIFICATE
 290' FSL & 1935' FEL SWSE (SURFACE)
 LOCATED IN SECTION 23
 50' FNL & 1590' FEL NWNE (HEEL)
 LOCATED IN SECTION 26
 700' FSL & 1578' FEL SWSE (BOTTOM)
 LOCATED IN SECTION 14
 T1N, R67W, 6TH P.M.
 WELD COUNTY, COLORADO

**Kerr-McGee Oil &
 Gas Onshore L.P.**
 1099 18th Street
 Denver, Colorado 80202



CONSULTING, LLC

SHERIDAN OFFICE: 1095 Saberton Avenue, Sheridan, Wyoming 82801, Phone 307-674-0609
 LOVELAND OFFICE: 1635 Foxtrail Drive, Suite 204, Loveland, Colorado 80538, Phone 970-776-4331

DRAFTED BY:	LMO	CHECKED BY:	BJR	SHEET NO: 1B 1B OF 1
DATE DRAFTED:	8/5/15	DATE SURVEYED:	5/7/15	
REVISED:		FILE NAME:	15-42	