



CARRIZO OIL & GAS, INC.

Field: Niobrara CONZ'83

Site: State 16-11-9-60

Well: 3-16-9-60

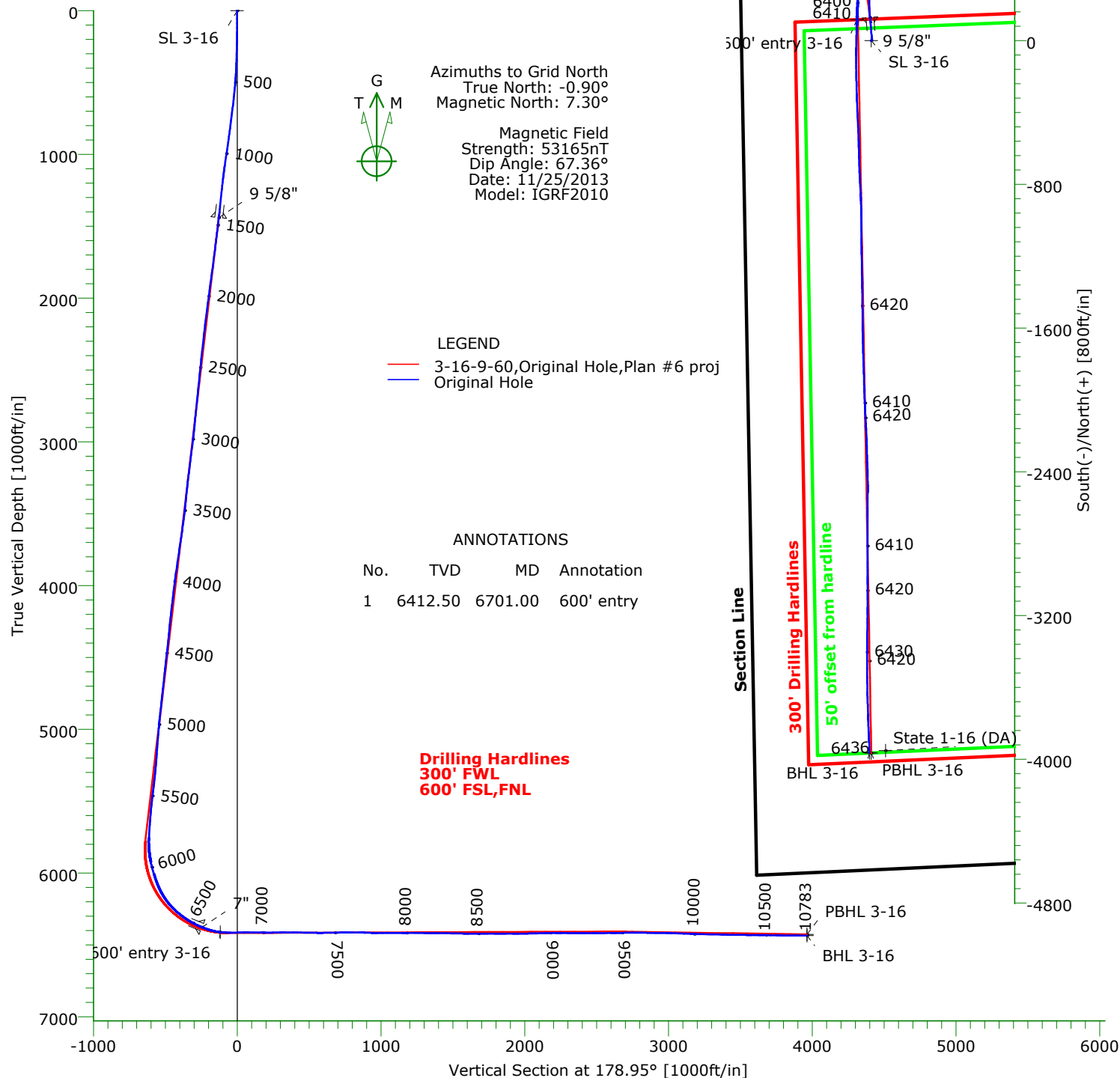
Wellpath: Original Hole



West(-)/East(+) [800ft/in]

CASING DETAILS

No.	TVD	MD	Name	Size
1	1440.52	1448.00	9 5/8"	9.625
2	6378.15	6568.00	7"	7.000



Name	TVD	+N/-S	+E/-W	Northing	Easting	Latitude	Longitude	Shape
State 1-16 (DA)	-100.00	-3951.46	80.45	1516973.66	3386643.84	40°44'38.840N	104°06'16.658W	Point
SL 3-16	0.00	0.00	0.00	1520925.12	3386563.39	40°45'17.892N	104°06'16.895W	Point
600' entry 3-16	6412.50	115.38	-80.28	1521040.50	3386483.11	40°45'19.045N	104°06'17.914W	Point
PBHL 3-16	6428.00	-3965.14	0.54	1516959.98	3386563.93	40°44'38.717N	104°06'17.698W	Point
BHL 3-16	6436.12	-3964.58	-9.13	1516960.54	3386554.26	40°44'38.724N	104°06'17.824W	Point

Wellpath: (3-16-9-60/Original Hole)

Created By: Tony LoRicca

Date: 12/04/2013

PRECISION DIRECTIONAL SERVICES, INC.

713.435.6250

Precision Directional Services, Inc.

Survey Report

Company: CARRIZO OIL & GAS, INC. Field: Niobrara CONZ'83 Site: State 16-11-9-60 Well: 3-16-9-60 Wellpath: Original Hole	Date: 12/04/2013 Co-ordinate(NE) Reference: Well: 3-16-9-60, Grid North Vertical (TVD) Reference: 5011'GL+17'KB 5028.0 Section (VS) Reference: Well (0.00N,0.00E,178.95Azi) Survey Calculation Method: Minimum Curvature	Time: 10:56:05 Page: 1 Db: Adapti
--	---	--

Field: Niobrara CONZ'83 Map System: US State Plane Coordinate System 1983 Geo Datum: GRS 1980 Sys Datum: Mean Sea Level	Map Zone: Colorado, Northern Zone Coordinate System: Well Centre Geomagnetic Model: IGRF2010
--	---

Site: State 16-11-9-60 Weld County, CO Site Position: From: Map Position Uncertainty: 0.00 ft Ground Level: 5011.00 ft	Northing: 1520935.59 ft Easting: 3386552.65 ft Latitude: 40 45 17.998 N Longitude: 104 6 17.032 W North Reference: Grid Grid Convergence: 0.90 deg
--	---

Well: 3-16-9-60 719'FNL,722'FWL Well Position: +N/-S -10.47 ft +E/-W 10.74 ft Position Uncertainty: 0.00 ft	Slot Name: Northing: 1520925.12 ft Easting : 3386563.39 ft Latitude: 40 45 17.892 N Longitude: 104 6 16.895 W
--	--

Wellpath: Original Hole Current Datum: 5011'GL+17'KB Magnetic Data: 11/25/2013 Field Strength: 53165 nT Vertical Section: Depth From (TVD) ft	Drilled From: Surface Tie-on Depth: 0.00 ft Above System Datum: Mean Sea Level Declination: 8.20 deg Mag Dip Angle: 67.36 deg +N/-S ft +E/-W ft Direction deg
0.00	0.00

Survey Program for Definitive Wellpath			
Date: 12/03/2013	Validated: No	Version: 2	
Actual From ft	To ft	Survey	Toolcode Tool Name
149.00	10726.00	Survey #1 (149.00-10726.00)	MWD Std MWD
10783.00	10783.00	Survey #2 (10783.00-10783.00)	Project Projection

Survey										
MD	Incl	Azim	TVD	+N/-S	+E/-W	VS	DLS	Build	Turn	Tool/Comment
ft	deg	deg	ft	ft	ft	ft	deg/100ft	deg/100ft	deg/100ft	
0.00	0.00	0.00	0.00	0.00	0.00	0.00	0.00	0.00	0.00	TIE LINE
149.00	0.50	13.70	149.00	0.63	0.15	-0.63	0.34	0.34	0.00	MWD
242.00	1.80	42.50	241.98	2.10	1.24	-2.08	1.49	1.40	30.97	MWD
336.00	2.00	44.30	335.93	4.37	3.38	-4.30	0.22	0.21	1.91	MWD
429.00	3.10	7.00	428.84	8.02	4.82	-7.93	2.08	1.18	-40.11	MWD
523.00	5.50	352.60	522.57	15.01	4.55	-14.93	2.78	2.55	-15.32	MWD
617.00	6.40	353.30	616.06	24.68	3.36	-24.62	0.96	0.96	0.74	MWD
710.00	6.90	352.00	708.44	35.36	1.98	-35.32	0.56	0.54	-1.40	MWD
804.00	7.50	354.50	801.70	47.06	0.60	-47.04	0.72	0.64	2.66	MWD
897.00	8.00	354.30	893.85	59.54	-0.62	-59.55	0.54	0.54	-0.22	MWD
991.00	8.30	354.70	986.90	72.81	-1.90	-72.83	0.32	0.32	0.43	MWD
1085.00	8.40	356.10	1079.90	86.41	-2.99	-86.45	0.24	0.11	1.49	MWD
1179.00	6.40	354.00	1173.11	98.48	-4.01	-98.53	2.15	-2.13	-2.23	MWD
1272.00	6.10	355.00	1265.56	108.55	-4.98	-108.63	0.34	-0.32	1.08	MWD
1367.00	6.10	354.20	1360.02	118.60	-5.93	-118.69	0.09	0.00	-0.84	MWD
1408.00	6.40	354.70	1400.78	123.05	-6.36	-123.14	0.74	0.73	1.22	MWD
1535.00	6.80	356.20	1526.94	137.60	-7.51	-137.71	0.34	0.31	1.18	MWD
1620.00	7.10	357.10	1611.31	147.86	-8.11	-147.99	0.38	0.35	1.06	MWD
1705.00	7.50	356.00	1695.62	158.64	-8.77	-158.78	0.50	0.47	-1.29	MWD
1791.00	7.50	356.40	1780.89	169.84	-9.51	-169.99	0.06	0.00	0.47	MWD
1876.00	7.70	358.70	1865.14	181.07	-9.99	-181.23	0.43	0.24	2.71	MWD
1961.00	7.50	359.70	1949.39	192.31	-10.14	-192.47	0.28	-0.24	1.18	MWD

Precision Directional Services, Inc.

Survey Report

Company: CARRIZO OIL & GAS, INC. Field: Niobrara CONZ'83 Site: State 16-11-9-60 Well: 3-16-9-60 Wellpath: Original Hole	Date: 12/04/2013 Co-ordinate(NE) Reference: Well: 3-16-9-60, Grid North Vertical (TVD) Reference: 5011'GL+17"KB 5028.0 Section (VS) Reference: Well (0.00N,0.00E,178.95Azi) Survey Calculation Method: Minimum Curvature	Time: 10:56:05 Page: 2 Db: Adapti
--	---	--

Survey

MD ft	Incl deg	Azim deg	TVD ft	+N/-S ft	+E/-W ft	VS ft	DLS deg/100ft	Build deg/100ft	Turn deg/100ft	Tool/Comment
2046.00	7.30	359.90	2033.69	203.26	-10.18	-203.41	0.24	-0.24	0.24	MWD
2131.00	7.30	359.40	2118.00	214.06	-10.25	-214.21	0.07	0.00	-0.59	MWD
2217.00	6.90	355.30	2203.34	224.67	-10.73	-224.83	0.75	-0.47	-4.77	MWD
2302.00	6.30	355.90	2287.77	234.41	-11.48	-234.59	0.71	-0.71	0.71	MWD
2387.00	6.30	355.30	2372.26	243.71	-12.20	-243.90	0.08	0.00	-0.71	MWD
2473.00	6.20	357.80	2457.75	253.06	-12.76	-253.25	0.34	-0.12	2.91	MWD
2558.00	5.70	357.10	2542.29	261.86	-13.15	-262.06	0.59	-0.59	-0.82	MWD
2643.00	5.50	357.80	2626.89	270.15	-13.52	-270.35	0.25	-0.24	0.82	MWD
2728.00	5.90	353.90	2711.46	278.56	-14.14	-278.77	0.65	0.47	-4.59	MWD
2813.00	5.90	350.80	2796.01	287.22	-15.31	-287.45	0.37	0.00	-3.65	MWD
2898.00	5.60	349.20	2880.59	295.60	-16.78	-295.86	0.40	-0.35	-1.88	MWD
2983.00	6.90	348.70	2965.08	304.68	-18.56	-304.97	1.53	1.53	-0.59	MWD
3069.00	7.20	351.80	3050.43	315.08	-20.34	-315.40	0.56	0.35	3.60	MWD
3154.00	7.30	351.10	3134.75	325.69	-21.93	-326.04	0.16	0.12	-0.82	MWD
3239.00	7.10	349.90	3219.08	336.20	-23.69	-336.58	0.29	-0.24	-1.41	MWD
3325.00	6.20	353.40	3304.50	346.04	-25.16	-346.45	1.15	-1.05	4.07	MWD
3410.00	5.80	357.50	3389.04	354.89	-25.87	-355.31	0.69	-0.47	4.82	MWD
3495.00	6.40	352.40	3473.55	363.88	-26.69	-364.31	0.95	0.71	-6.00	MWD
3580.00	7.50	348.30	3557.93	374.01	-28.44	-374.47	1.42	1.29	-4.82	MWD
3666.00	8.20	349.50	3643.12	385.54	-30.69	-386.03	0.84	0.81	1.40	MWD
3751.00	9.00	349.50	3727.17	398.03	-33.01	-398.57	0.94	0.94	0.00	MWD
3836.00	8.30	347.30	3811.20	410.56	-35.57	-411.14	0.91	-0.82	-2.59	MWD
3921.00	8.50	347.60	3895.29	422.68	-38.27	-423.31	0.24	0.24	0.35	MWD
4006.00	7.30	346.00	3979.48	434.05	-40.92	-434.73	1.44	-1.41	-1.88	MWD
4092.00	6.90	341.60	4064.82	444.26	-43.88	-444.99	0.78	-0.47	-5.12	MWD
4177.00	6.80	348.50	4149.22	454.03	-46.49	-454.81	0.97	-0.12	8.12	MWD
4262.00	6.20	355.00	4233.67	463.54	-47.89	-464.34	1.12	-0.71	7.65	MWD
4347.00	5.50	7.30	4318.23	472.15	-47.78	-472.95	1.68	-0.82	14.47	MWD
4433.00	6.10	8.40	4403.79	480.76	-46.59	-481.53	0.71	0.70	1.28	MWD
4518.00	6.70	0.40	4488.26	490.18	-45.89	-490.94	1.26	0.71	-9.41	MWD
4603.00	6.50	351.10	4572.70	499.90	-46.60	-500.67	1.28	-0.24	-10.94	MWD
4688.00	6.10	356.60	4657.19	509.16	-47.61	-509.94	0.85	-0.47	6.47	MWD
4774.00	6.20	353.40	4742.69	518.33	-48.42	-519.13	0.42	0.12	-3.72	MWD
4859.00	6.80	343.60	4827.15	527.72	-50.37	-528.55	1.48	0.71	-11.53	MWD
4944.00	6.50	338.30	4911.58	537.02	-53.57	-537.91	0.80	-0.35	-6.24	MWD
5029.00	4.70	336.90	4996.17	544.69	-56.71	-545.64	2.12	-2.12	-1.65	MWD
5114.00	5.00	336.00	5080.86	551.28	-59.58	-552.28	0.36	0.35	-1.06	MWD
5200.00	4.70	337.40	5166.56	557.95	-62.46	-559.01	0.37	-0.35	1.63	MWD
5285.00	4.90	345.50	5251.26	564.68	-64.71	-565.78	0.83	0.24	9.53	MWD
5370.00	6.20	348.70	5335.86	572.70	-66.52	-573.82	1.57	1.53	3.76	MWD
5456.00	7.40	351.80	5421.25	582.74	-68.22	-583.89	1.46	1.40	3.60	MWD
5541.00	6.20	349.90	5505.65	592.67	-69.80	-593.85	1.44	-1.41	-2.24	MWD
5626.00	5.00	353.10	5590.25	600.87	-71.05	-602.07	1.46	-1.41	3.76	MWD
5711.00	4.10	352.20	5674.98	607.56	-71.91	-608.77	1.06	-1.06	-1.06	MWD
5790.00	3.50	357.60	5753.80	612.77	-72.40	-613.99	0.88	-0.76	6.84	MWD
5833.00	1.20	44.40	5796.77	614.40	-72.14	-615.62	6.55	-5.35	108.84	MWD
5876.00	3.50	162.20	5839.74	613.47	-71.42	-614.68	9.76	5.35	273.95	MWD
5918.00	8.80	172.50	5881.49	609.06	-70.61	-610.25	12.84	12.62	24.52	MWD
5961.00	14.00	168.80	5923.62	600.69	-69.17	-601.86	12.21	12.09	-8.60	MWD
6004.00	15.20	169.70	5965.23	590.04	-67.15	-591.17	2.84	2.79	2.09	MWD
6046.00	15.60	170.20	6005.73	579.06	-65.20	-580.16	1.00	0.95	1.19	MWD
6089.00	18.50	174.30	6046.83	566.57	-63.54	-567.64	7.30	6.74	9.53	MWD
6132.00	22.20	177.60	6087.14	551.66	-62.52	-552.71	9.01	8.60	7.67	MWD

Precision Directional Services, Inc.

Survey Report

Company: CARRIZO OIL & GAS, INC. Field: Niobrara CONZ'83 Site: State 16-11-9-60 Well: 3-16-9-60 Wellpath: Original Hole	Date: 12/04/2013 Time: 10:56:05 Page: 3 Co-ordinate(NE) Reference: Well: 3-16-9-60, Grid North Vertical (TVD) Reference: 5011'GL+17'KB 5028.0 Section (VS) Reference: Well (0.00N,0.00E,178.95Azi) Survey Calculation Method: Minimum Curvature Db: Adapti
--	--

Survey

MD ft	Incl deg	Azim deg	TVD ft	+N/-S ft	+E/-W ft	VS ft	DLS deg/100ft	Build deg/100ft	Turn deg/100ft	Tool/Comment
6174.00	27.30	179.00	6125.27	534.09	-62.02	-535.14	12.22	12.14	3.33	MWD
6217.00	32.40	180.30	6162.56	512.70	-61.91	-513.75	11.95	11.86	3.02	MWD
6259.00	36.90	179.40	6197.10	488.83	-61.84	-489.88	10.78	10.71	-2.14	MWD
6302.00	42.00	181.30	6230.29	461.52	-62.03	-462.57	12.19	11.86	4.42	MWD
6345.00	48.10	183.60	6260.66	431.13	-63.36	-432.22	14.68	14.19	5.35	MWD
6387.00	51.60	183.40	6287.74	399.09	-65.32	-400.22	8.34	8.33	-0.48	MWD
6430.00	55.40	183.80	6313.31	364.60	-67.49	-365.78	8.87	8.84	0.93	MWD
6472.00	59.40	183.40	6335.93	329.30	-69.71	-330.52	9.56	9.52	-0.95	MWD
6515.00	63.60	183.30	6356.45	291.58	-71.92	-292.85	9.77	9.77	-0.23	MWD
6602.00	70.90	183.40	6390.07	211.54	-76.60	-212.91	8.39	8.39	0.11	MWD
6645.00	76.00	182.20	6402.31	170.38	-78.61	-171.80	12.16	11.86	-2.79	MWD
6687.00	81.20	181.50	6410.61	129.25	-79.94	-130.69	12.49	12.38	-1.67	MWD
6701.00	83.32	181.37	6412.50	115.38	-80.28	-116.83	15.14	15.12	-0.94	600' entry
6730.00	87.70	181.10	6414.77	86.48	-80.91	-87.95	15.14	15.12	-0.93	MWD
6773.00	90.40	181.00	6415.48	43.50	-81.69	-44.99	6.28	6.28	-0.23	MWD
6815.00	90.70	181.30	6415.08	1.51	-82.54	-3.02	1.01	0.71	0.71	MWD
6858.00	91.10	181.10	6414.40	-41.47	-83.44	39.94	1.04	0.93	-0.47	MWD
6901.00	89.60	179.90	6414.14	-84.47	-83.81	82.92	4.47	-3.49	-2.79	MWD
6943.00	89.50	179.60	6414.47	-126.47	-83.63	124.91	0.75	-0.24	-0.71	MWD
6986.00	89.30	179.40	6414.92	-169.46	-83.25	167.91	0.66	-0.47	-0.47	MWD
7028.00	90.10	178.30	6415.14	-211.45	-82.41	209.91	3.24	1.90	-2.62	MWD
7071.00	90.40	179.00	6414.95	-254.44	-81.40	252.91	1.77	0.70	1.63	MWD
7113.00	90.30	178.90	6414.70	-296.43	-80.63	294.91	0.34	-0.24	-0.24	MWD
7156.00	90.20	177.60	6414.51	-339.41	-79.32	337.90	3.03	-0.23	-3.02	MWD
7199.00	90.00	177.60	6414.43	-382.37	-77.52	380.89	0.47	-0.47	0.00	MWD
7241.00	89.50	177.30	6414.62	-424.33	-75.65	422.87	1.39	-1.19	-0.71	MWD
7284.00	89.30	177.30	6415.07	-467.28	-73.62	465.85	0.47	-0.47	0.00	MWD
7327.00	88.80	177.60	6415.78	-510.23	-71.71	508.83	1.36	-1.16	0.70	MWD
7369.00	89.00	177.80	6416.59	-552.19	-70.02	550.82	0.67	0.48	0.48	MWD
7412.00	90.70	178.90	6416.70	-595.17	-68.79	593.81	4.71	3.95	2.56	MWD
7454.00	90.90	178.70	6416.11	-637.16	-67.91	635.81	0.67	0.48	-0.48	MWD
7497.00	90.90	178.20	6415.44	-680.14	-66.74	678.80	1.16	0.00	-1.16	MWD
7539.00	91.10	177.80	6414.70	-722.10	-65.28	720.79	1.06	0.48	-0.95	MWD
7582.00	89.70	177.30	6414.40	-765.06	-63.44	763.77	3.46	-3.26	-1.16	MWD
7625.00	90.00	176.90	6414.52	-808.01	-61.26	806.75	1.16	0.70	-0.93	MWD
7667.00	90.00	176.90	6414.52	-849.95	-58.99	848.72	0.00	0.00	0.00	MWD
7710.00	87.80	178.50	6415.34	-892.90	-57.27	891.70	6.33	-5.12	3.72	MWD
7752.00	87.90	178.70	6416.92	-934.86	-56.24	933.67	0.53	0.24	0.48	MWD
7795.00	89.60	179.00	6417.86	-977.84	-55.38	976.66	4.01	3.95	0.70	MWD
7838.00	90.00	179.40	6418.01	-1020.83	-54.78	1019.66	1.32	0.93	0.93	MWD
7880.00	90.10	179.70	6417.97	-1062.83	-54.45	1061.65	0.75	0.24	0.71	MWD
7923.00	90.50	179.70	6417.74	-1105.83	-54.22	1104.65	0.93	0.93	0.00	MWD
7966.00	90.80	179.60	6417.26	-1148.83	-53.96	1147.64	0.74	0.70	-0.23	MWD
8008.00	89.30	178.90	6417.22	-1190.82	-53.41	1189.64	3.94	-3.57	-1.67	MWD
8051.00	89.30	178.90	6417.74	-1233.81	-52.59	1232.64	0.00	0.00	0.00	MWD
8093.00	89.60	179.00	6418.15	-1275.80	-51.82	1274.64	0.75	0.71	0.24	MWD
8136.00	89.50	179.20	6418.49	-1318.79	-51.14	1317.64	0.52	-0.23	0.47	MWD
8179.00	89.90	178.70	6418.71	-1361.79	-50.35	1360.63	1.49	0.93	-1.16	MWD
8221.00	89.30	179.40	6419.00	-1403.78	-49.66	1402.63	2.20	-1.43	1.67	MWD
8264.00	89.20	179.40	6419.57	-1446.77	-49.21	1445.63	0.23	-0.23	0.00	MWD
8307.00	89.10	179.20	6420.20	-1489.76	-48.68	1488.62	0.52	-0.23	-0.47	MWD
8350.00	89.00	179.70	6420.92	-1532.76	-48.27	1531.61	1.19	-0.23	1.16	MWD
8392.00	88.90	179.40	6421.69	-1574.75	-47.94	1573.61	0.75	-0.24	-0.71	MWD
8435.00	90.00	179.20	6422.10	-1617.74	-47.41	1616.60	2.60	2.56	-0.47	MWD

Precision Directional Services, Inc.

Survey Report

Company: CARRIZO OIL & GAS, INC. Field: Niobrara CONZ'83 Site: State 16-11-9-60 Well: 3-16-9-60 Wellpath: Original Hole	Date: 12/04/2013 Time: 10:56:05 Page: 4 Co-ordinate(NE) Reference: Well: 3-16-9-60, Grid North Vertical (TVD) Reference: 5011'GL+17"KB 5028.0 Section (VS) Reference: Well (0.00N,0.00E,178.95Azi) Survey Calculation Method: Minimum Curvature Db: Adapti
--	--

Survey

MD ft	Incl deg	Azim deg	TVD ft	+N/-S ft	+E/-W ft	VS ft	DLS deg/100ft	Build deg/100ft	Turn deg/100ft	Tool/Comment
8478.00	89.90	178.90	6422.14	-1660.74	-46.70	1659.60	0.74	-0.23	-0.70	MWD
8520.00	89.80	178.50	6422.25	-1702.73	-45.75	1701.60	0.98	-0.24	-0.95	MWD
8563.00	89.60	178.00	6422.47	-1745.70	-44.43	1744.60	1.25	-0.47	-1.16	MWD
8606.00	89.60	177.80	6422.77	-1788.67	-42.86	1787.59	0.47	0.00	-0.47	MWD
8648.00	90.40	178.20	6422.77	-1830.65	-41.39	1829.58	2.13	1.90	0.95	MWD
8691.00	90.00	178.90	6422.62	-1873.63	-40.30	1872.58	1.87	-0.93	1.63	MWD
8734.00	90.00	178.70	6422.62	-1916.62	-39.40	1915.58	0.47	0.00	-0.47	MWD
8776.00	90.40	177.60	6422.48	-1958.60	-38.05	1957.58	2.79	0.95	-2.62	MWD
8819.00	90.70	177.50	6422.06	-2001.56	-36.21	2000.56	0.74	0.70	-0.23	MWD
8862.00	91.20	177.60	6421.35	-2044.52	-34.37	2043.54	1.19	1.16	0.23	MWD
8905.00	91.50	176.90	6420.34	-2087.45	-32.31	2086.51	1.77	0.70	-1.63	MWD
8948.00	91.70	176.80	6419.14	-2130.37	-29.95	2129.47	0.52	0.47	-0.23	MWD
8990.00	90.70	177.50	6418.26	-2172.31	-27.86	2171.43	2.91	-2.38	1.67	MWD
9033.00	91.00	177.50	6417.62	-2215.26	-25.98	2214.42	0.70	0.70	0.00	MWD
9076.00	88.90	178.70	6417.66	-2258.24	-24.56	2257.41	5.62	-4.88	2.79	MWD
9118.00	89.20	178.30	6418.35	-2300.22	-23.46	2299.40	1.19	0.71	-0.95	MWD
9161.00	89.60	178.00	6418.80	-2343.19	-22.07	2342.39	1.16	0.93	-0.70	MWD
9204.00	89.90	177.50	6418.99	-2386.16	-20.38	2385.38	1.36	0.70	-1.16	MWD
9247.00	89.30	179.90	6419.29	-2429.14	-19.41	2428.38	5.75	-1.40	5.58	MWD
9289.00	89.50	179.70	6419.73	-2471.14	-19.26	2470.37	0.67	0.48	-0.48	MWD
9332.00	91.20	180.40	6419.47	-2514.14	-19.30	2513.36	4.28	3.95	1.63	MWD
9375.00	91.30	180.60	6418.53	-2557.13	-19.67	2556.34	0.52	0.23	0.47	MWD
9417.00	91.50	180.60	6417.50	-2599.11	-20.11	2598.31	0.48	0.48	0.00	MWD
9460.00	90.30	180.10	6416.83	-2642.10	-20.38	2641.29	3.02	-2.79	-1.16	MWD
9503.00	90.20	179.60	6416.64	-2685.10	-20.26	2684.28	1.19	-0.23	-1.16	MWD
9545.00	90.30	179.70	6416.46	-2727.10	-20.01	2726.28	0.34	0.24	0.24	MWD
9588.00	90.20	180.10	6416.27	-2770.10	-19.93	2769.27	0.96	-0.23	0.93	MWD
9631.00	89.60	180.30	6416.35	-2813.10	-20.08	2812.26	1.47	-1.40	0.47	MWD
9673.00	89.50	180.10	6416.68	-2855.10	-20.23	2854.25	0.53	-0.24	-0.48	MWD
9716.00	89.70	179.90	6416.98	-2898.10	-20.23	2897.24	0.66	0.47	-0.47	MWD
9759.00	89.30	180.40	6417.35	-2941.10	-20.34	2940.23	1.49	-0.93	1.16	MWD
9801.00	89.50	179.90	6417.79	-2983.09	-20.45	2982.22	1.28	0.48	-1.19	MWD
9844.00	88.00	180.10	6418.73	-3026.08	-20.45	3025.20	3.52	-3.49	0.47	MWD
9887.00	87.80	180.10	6420.30	-3069.05	-20.53	3068.16	0.47	-0.47	0.00	MWD
9929.00	87.50	179.60	6422.03	-3111.02	-20.42	3110.12	1.39	-0.71	-1.19	MWD
9972.00	87.30	179.60	6423.98	-3153.97	-20.12	3153.07	0.47	-0.47	0.00	MWD
10015.00	88.80	181.10	6425.44	-3196.94	-20.38	3196.03	4.93	3.49	3.49	MWD
10057.00	88.90	181.00	6426.28	-3238.93	-21.15	3238.00	0.34	0.24	-0.24	MWD
10100.00	88.80	181.00	6427.15	-3281.91	-21.90	3280.96	0.23	-0.23	0.00	MWD
10143.00	88.50	181.10	6428.16	-3324.89	-22.69	3323.92	0.74	-0.70	0.23	MWD
10185.00	88.50	180.40	6429.26	-3366.88	-23.24	3365.88	1.67	0.00	-1.67	MWD
10228.00	89.30	179.70	6430.08	-3409.87	-23.27	3408.87	2.47	1.86	-1.63	MWD
10271.00	89.30	179.70	6430.61	-3452.86	-23.05	3451.86	0.00	0.00	0.00	MWD
10313.00	89.30	179.60	6431.12	-3494.86	-22.79	3493.85	0.24	0.00	-0.24	MWD
10356.00	89.30	179.60	6431.65	-3537.86	-22.49	3536.85	0.00	0.00	0.00	MWD
10399.00	89.80	179.00	6431.99	-3580.85	-21.97	3579.85	1.82	1.16	-1.40	MWD
10442.00	90.00	178.90	6432.06	-3623.84	-21.18	3622.85	0.52	0.47	-0.23	MWD
10484.00	89.00	178.20	6432.43	-3665.83	-20.12	3664.84	2.91	-2.38	-1.67	MWD
10527.00	88.50	178.30	6433.37	-3708.80	-18.80	3707.83	1.19	-1.16	0.23	MWD
10570.00	88.50	178.30	6434.49	-3751.76	-17.53	3750.81	0.00	0.00	0.00	MWD
10612.00	89.80	178.00	6435.11	-3793.74	-16.17	3792.80	3.18	3.10	-0.71	MWD
10655.00	89.50	177.80	6435.38	-3836.71	-14.60	3835.79	0.84	-0.70	-0.47	MWD
10698.00	89.30	176.90	6435.83	-3879.66	-12.61	3878.77	2.14	-0.47	-2.09	MWD

Precision Directional Services, Inc.

Survey Report

Company: CARRIZO OIL & GAS, INC. Field: Niobrara CONZ'83 Site: State 16-11-9-60 Well: 3-16-9-60 Wellpath: Original Hole	Date: 12/04/2013 Time: 10:56:05 Page: 5 Co-ordinate(NE) Reference: Well: 3-16-9-60, Grid North Vertical (TVD) Reference: 5011'GL+17'KB 5028.0 Section (VS) Reference: Well (0.00N,0.00E,178.95Azi) Survey Calculation Method: Minimum Curvature Db: Adapti
--	--

Survey

MD ft	Incl deg	Azim deg	TVD ft	+N/-S ft	+E/-W ft	VS ft	DLS deg/100ft	Build deg/100ft	Turn deg/100ft	Tool/Comment
10726.00	89.90	177.80	6436.02	-3907.63	-11.31	3906.76	3.86	2.14	3.21	MWD
10783.00	89.90	177.80	6436.12	-3964.58	-9.13	3963.75	0.00	0.00	0.00	Project

Annotation

MD ft	TVD ft	
6701.00	6412.50	600' entry