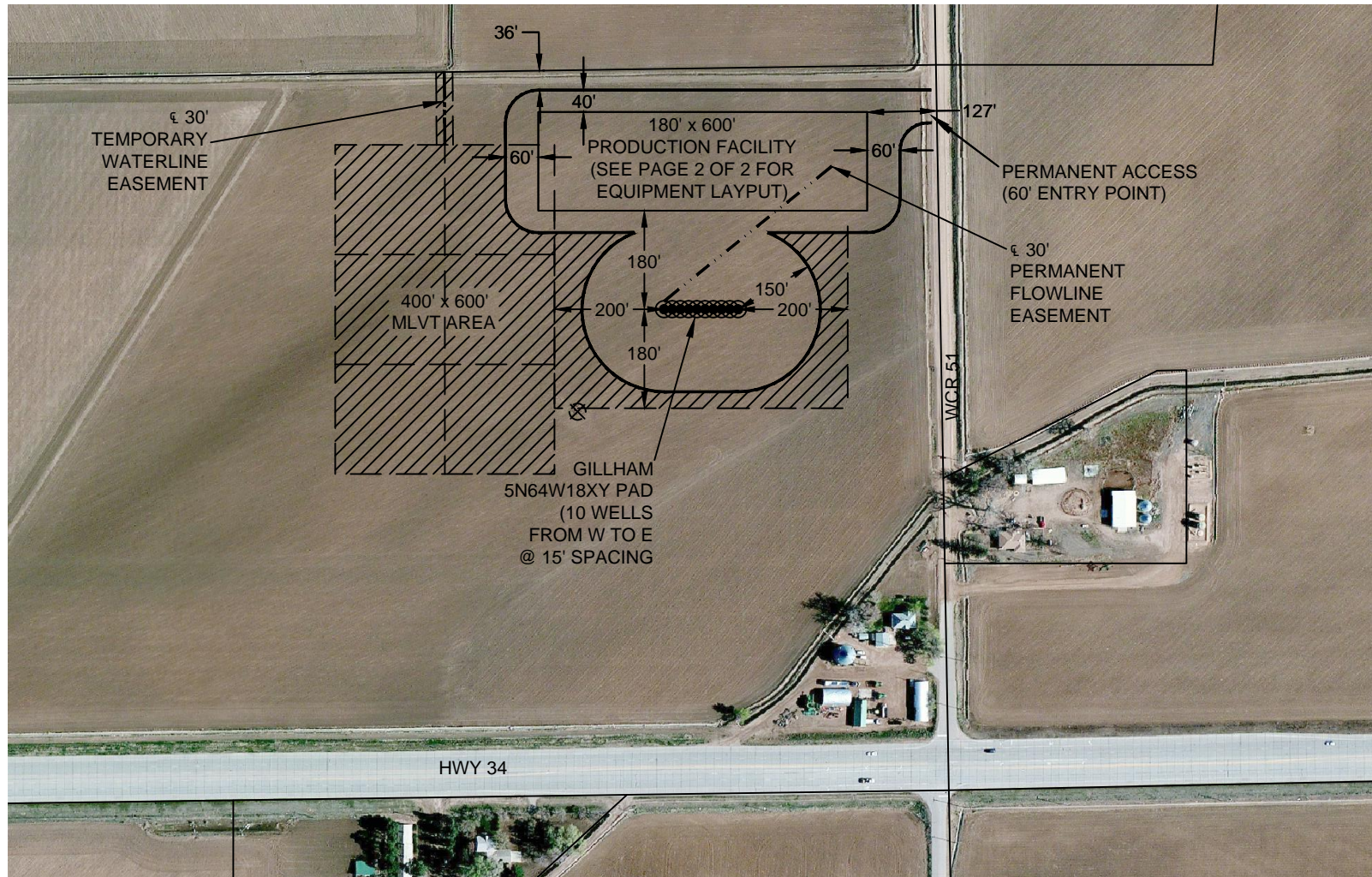




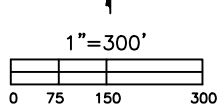
Washburn Land Surveying  
www.WashburnSurveying.com  
970-232-9645

## PROPOSED SCALED FACILITY GILLHAM 5N64W18XY PAD

SECTION: 18  
TOWNSHIP: 5N  
RANGE: 64W  
6TH P.M.  
WELD COUNTY, CO



RECLAIMED AREA(S)



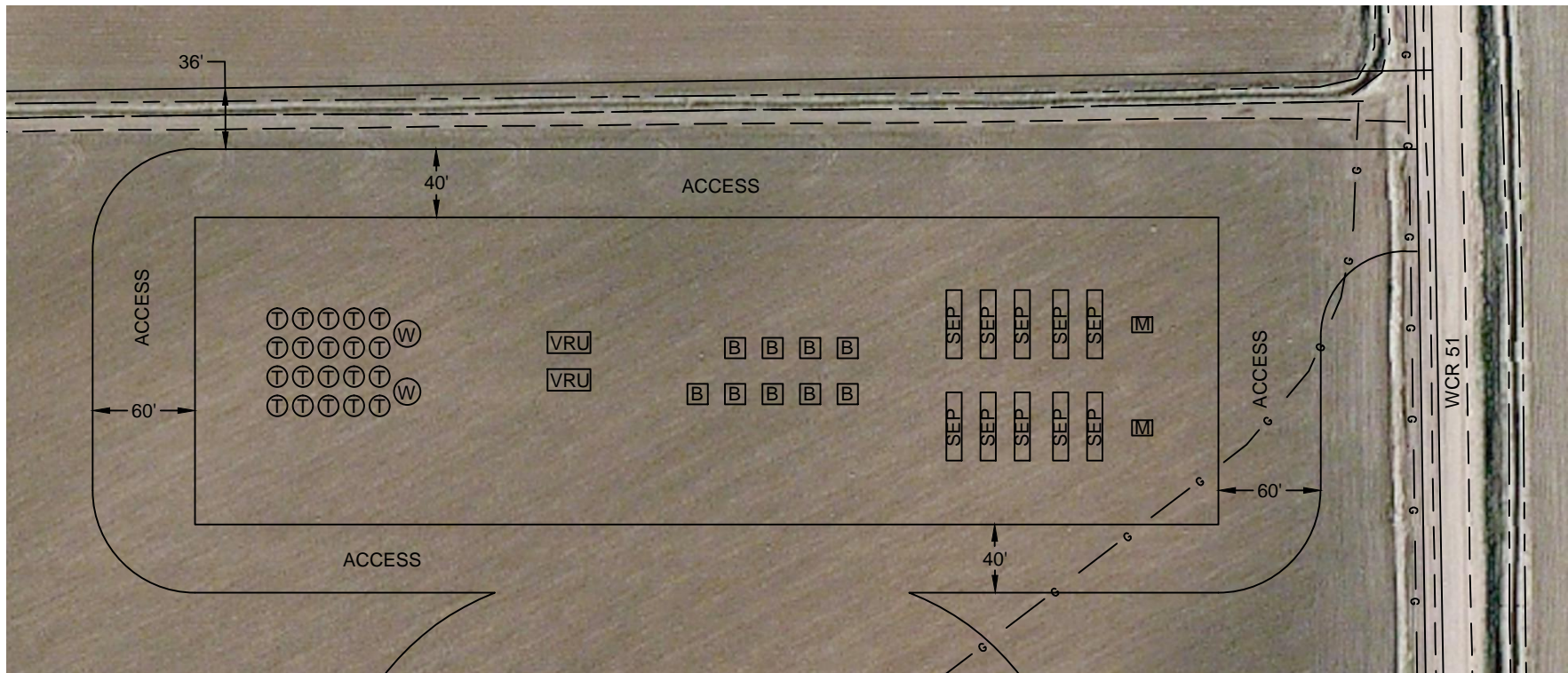
TOTAL DISTURBED AREA OF LOCATION: ± 13.6 ACRES  
TOTAL SIZE OF LOCATION AFTER RECLAMATION: ± 6.8 ACRES



Washburn Land Surveying  
www.WashburnSurveying.com  
970-232-9645

## PROPOSED SCALED FACILITY GILLHAM 5N64W18XY PAD

SECTION: 18  
TOWNSHIP: 5N  
RANGE: 64W  
6TH P.M.  
WELD COUNTY, CO



### LEGEND:

- Ⓣ TANK BATTERY
- Ⓦ WATER VAULT
- Ⓜ METER
- ⓑ BURNER/ECD
- VRU VAPOR RECOVERY UNIT
- SEP SEPARATOR

