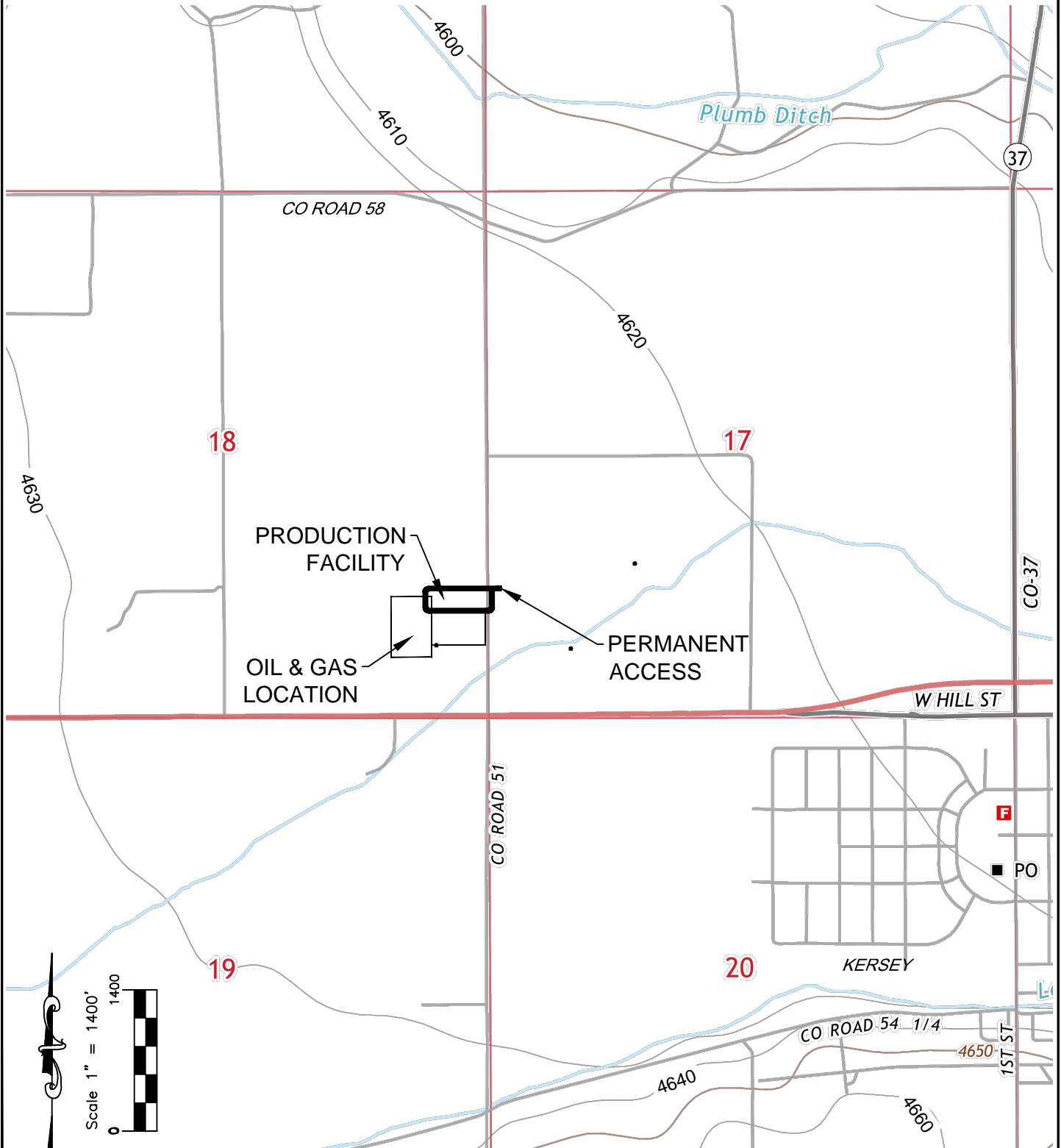




Washburn Land Surveying  
www.WashburnSurveying.com  
970-232-9645

# ACCESS ROAD MAP GILLHAM 5N64W18XY PAD

SECTION: 18  
TOWNSHIP: 5N  
RANGE: 64W  
6TH P.M.  
WELD COUNTY, CO





Washburn Land Surveying  
www.WashburnSurveying.com  
970-232-9645

## ACCESS ROAD MAP GILLHAM 5N64W18XY PAD

SECTION: 18  
TOWNSHIP: 5N  
RANGE: 64W  
6TH P.M.  
WELD COUNTY, CO



### DIRECTIONS:

FROM THE INTERSECTION OF WELD COUNTY ROAD 51 AND US HIGHWAY 34,  
THENCE NORTH ON WELD COUNTY ROAD 51 FOR 1207 FEET TO AN ACCESS TO THE  
WEST, THENCE WEST FOR 50 FEET TO PROPOSED WELL PAD.

1"=300'

