



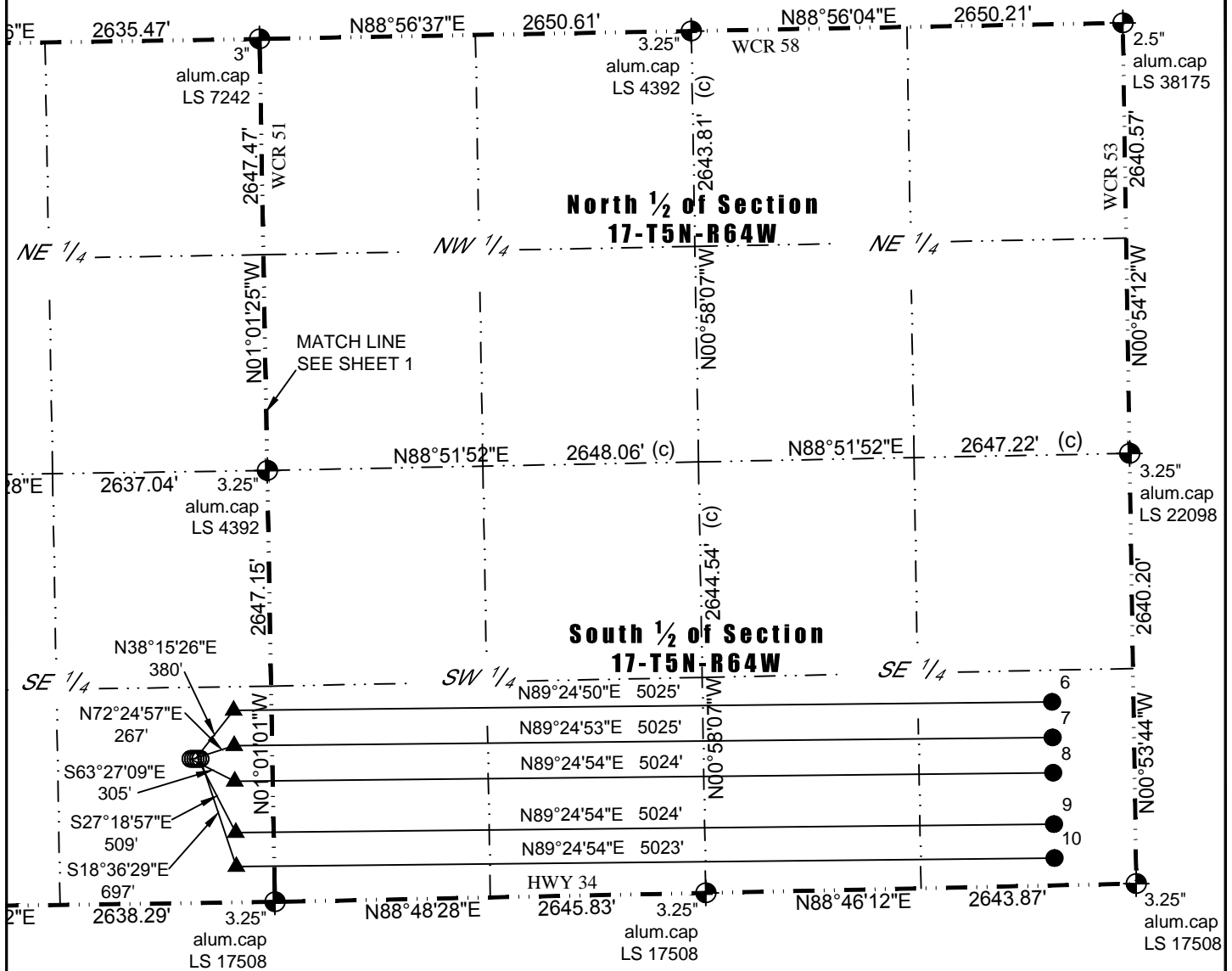
Washburn Land Surveying
www.WashburnSurveying.com
970-232-9645

MULI-WELL PLAN

GILLHAM 5N64W18 PAD

(EAST LATERALS)

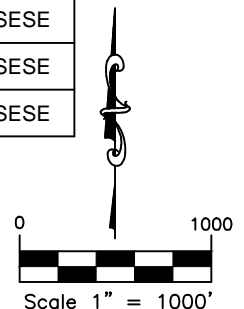
SECTION: 18
TOWNSHIP: 5N
RANGE: 64W
6TH P.M.
WELD COUNTY, CO



#	WELL NAME	BHL FOOTAGES				BHL LAT	BHL LONG	BHL S-T-R	BHL 1/4 1/4
6	GILLHAM 18X-102	1126	FSL	500	FEL	N40.395134°	W104.566201°	17-5-64	SESE
7	GILLHAM 18X-332	908	FSL	500	FEL	N40.394536°	W104.566197°	17-5-64	SESE
8	GILLHAM 18X-232	691	FSL	500	FEL	N40.393940°	W104.566193°	17-5-64	SESE
9	GILLHAM 18Y-312	375	FSL	500	FEL	N40.393073°	W104.566187°	17-5-64	SESE
10	GILLHAM 18Y-202	167	FSL	500	FEL	N40.392502°	W104.566183°	17-5-64	SESE

LEGEND:

- ALIQUOT CORNER AS DESCRIBED
- SURFACE HOLE LOCATION (SHL)
- ENTRY POINT (EP)
- BOTTOM HOLE LOCATION (BHL)



DATE: 9/25/2015 SHEET 2 OF 3