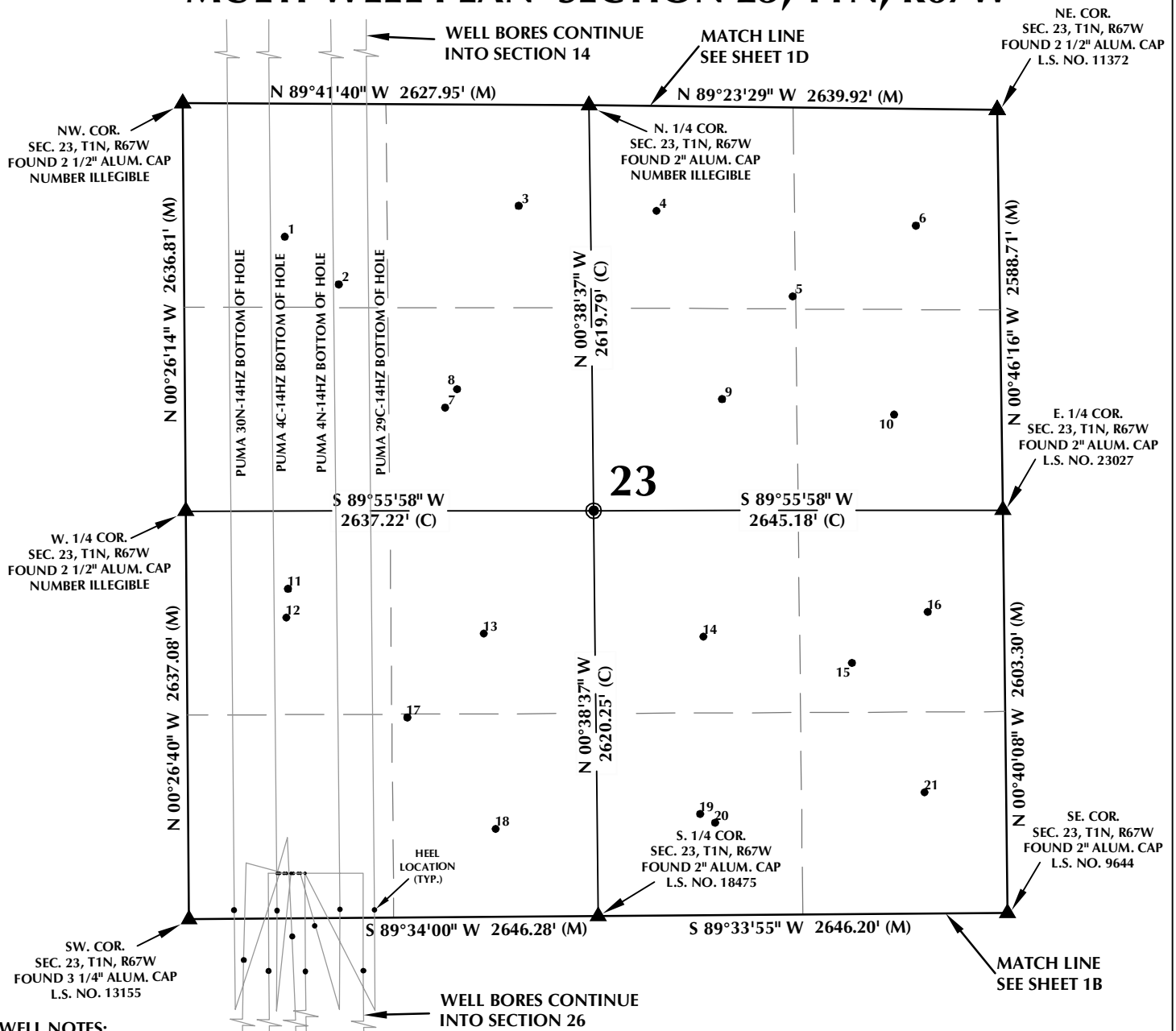


MULTI-WELL PLAN SECTION 23, T1N, R67W



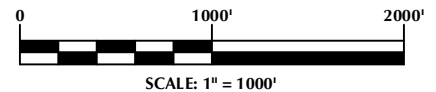
WELL NOTES:

PUMA FED 5S-35HZ
 SURFACE: 290' FSL, 571' FWL
 BOTTOM HOLE: 1' FNL, 809' FWL
PUMA 30N-14HZ
 SURFACE: 290' FSL, 586' FWL
 BOTTOM HOLE: 700' FSL, 289' FWL
PUMA FED 34N-35HZ
 SURFACE: 290' FSL, 616' FWL
 BOTTOM HOLE: 465' FSL, 52' FWL
PUMA FED 34C-35HZ
 SURFACE: 290' FSL, 631' FWL
 BOTTOM HOLE: 606' FSL, 492' FWL
PUMA 4C-14HZ
 SURFACE: 290' FSL, 661' FWL
 BOTTOM HOLE: 700' FSL, 560' FWL

PUMA FED 13N-35HZ
 SURFACE: 290' FSL, 676' FWL
 BOTTOM HOLE: 465' FSL, 771' FWL
PUMA FED 13C-35HZ
 SURFACE: 290' FSL, 706' FWL
 BOTTOM HOLE: 465' FSL, 1090' FWL
PUMA 4N-14HZ
 SURFACE: 290' FSL, 721' FWL
 BOTTOM HOLE: 700' FSL, 962' FWL
PUMA 29C-14HZ
 SURFACE: 290' FSL, 751' FWL
 BOTTOM HOLE: 700' FSL, 1190' FWL

NOTES:

1. ▲ INDICATES FOUND SECTION CORNER
2. ● INDICATES CALCULATED CORNER
3. BASIS OF BEARING DERIVED FROM COLORADO COORDINATE SYSTEM 1983 NORTH ZONE UNLESS OTHERWISE NOTED.
4. ALL MEASURED DISTANCES ARE GRID.
5. COMBINED SCALE FACTOR: .99972876
6. WELL FOOTAGES ARE MEASURED AT RIGHT ANGLES TO THE SECTION LINES.



WELL PAD - PUMA 4C-14HZ

MULTI-WELL PLAN
 PUMA FED 5S-35HZ,
 PUMA 30N-14HZ, PUMA FED 34N-35HZ,
 PUMA FED 34C-35HZ, PUMA 4C-14HZ,
 PUMA FED 13N-35HZ, PUMA FED 13C-35HZ,
 PUMA 4N-14HZ & PUMA 29C-14HZ
 LOCATED IN SECTIONS 14, 23, 26 & 35
 T1N, R67W, 6TH P.M.
 WELD COUNTY, COLORADO

**Kerr-McGee Oil &
 Gas Onshore L.P.**
 1099 18th Street
 Denver, Colorado 80202



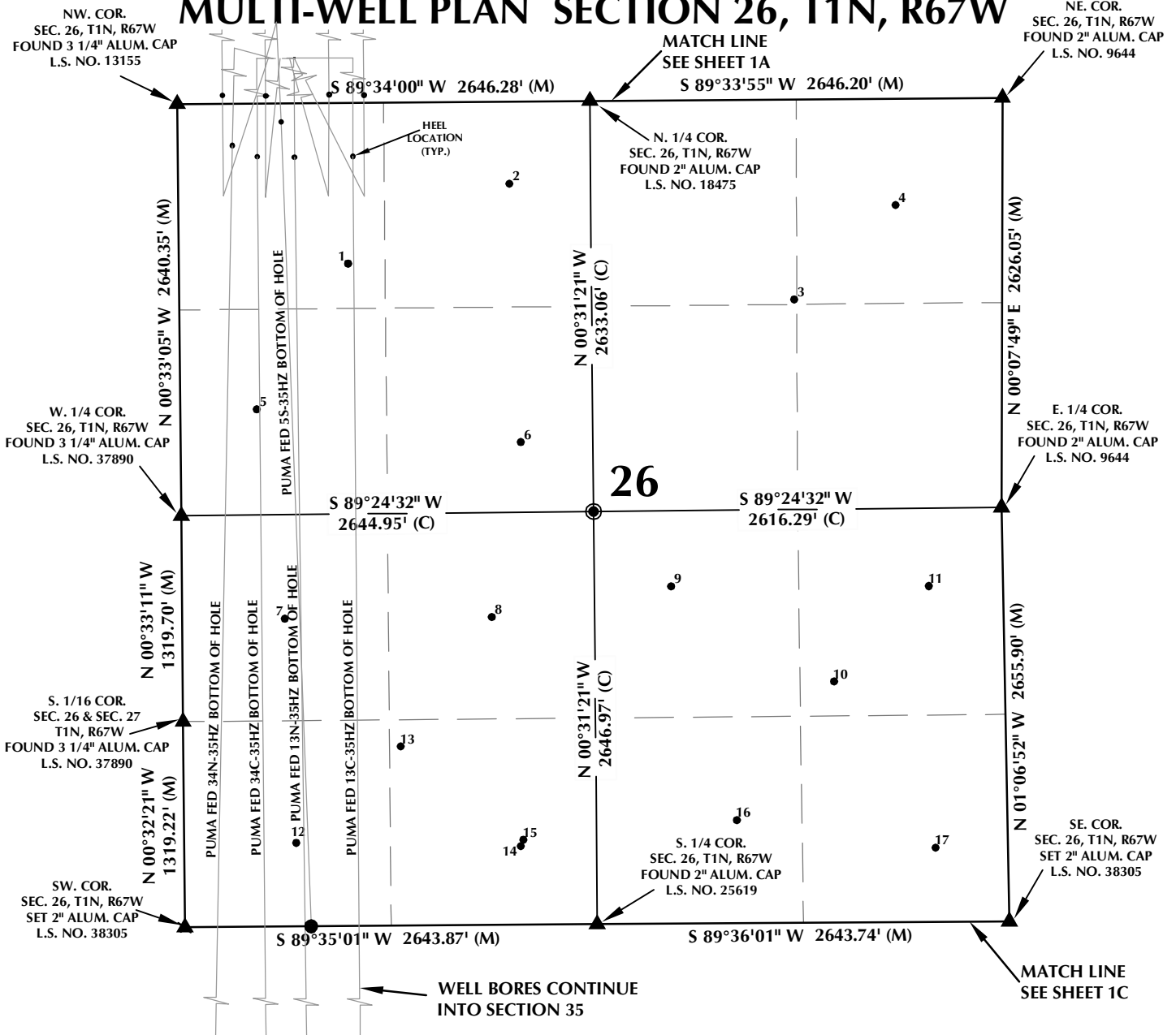
CONSULTING, LLC

SHERIDAN OFFICE
 1095 Saberton Avenue
 Sheridan, Wyoming 82801
 Phone 307-674-0609

LOVELAND OFFICE
 1635 Foxtrail Drive, Suite 204
 Loveland, Colorado 80538
 Phone 970-776-4331

| | | | | |
|---------------|---------|----------------|--------|-----------|
| DRAFTED BY: | LMO | CHECKED BY: | BJR | SHEET NO: |
| DATE DRAFTED: | 8/19/15 | DATE SURVEYED: | 5/7/15 | 1A |
| REVISED: | | FILE NAME: | 15-42 | 1A OF 2 |

MULTI-WELL PLAN SECTION 26, T1N, R67W



WELL NOTES:

PUMA FED 5S-35HZ
SURFACE: 290' FSL, 571' FWL
BOTTOM HOLE: 1' FNL, 809' FWL

PUMA 30N-14HZ
SURFACE: 290' FSL, 586' FWL
BOTTOM HOLE: 700' FSL, 289' FWL

PUMA FED 34N-35HZ
SURFACE: 290' FSL, 616' FWL
BOTTOM HOLE: 465' FSL, 52' FWL

PUMA FED 34C-35HZ
SURFACE: 290' FSL, 631' FWL
BOTTOM HOLE: 606' FSL, 492' FWL

PUMA 4C-14HZ
SURFACE: 290' FSL, 661' FWL
BOTTOM HOLE: 700' FSL, 560' FWL

PUMA FED 13N-35HZ
SURFACE: 290' FSL, 676' FWL
BOTTOM HOLE: 465' FSL, 771' FWL

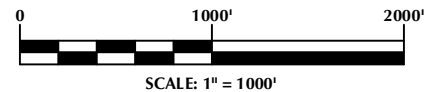
PUMA FED 13C-35HZ
SURFACE: 290' FSL, 706' FWL
BOTTOM HOLE: 465' FSL, 1090' FWL

PUMA 4N-14HZ
SURFACE: 290' FSL, 721' FWL
BOTTOM HOLE: 700' FSL, 962' FWL

PUMA 29C-14HZ
SURFACE: 290' FSL, 751' FWL
BOTTOM HOLE: 700' FSL, 1190' FWL

NOTES:

1. INDICATES FOUND SECTION CORNER
2. INDICATES CALCULATED CORNER
3. BASIS OF BEARING DERIVED FROM COLORADO COORDINATE SYSTEM 1983 NORTH ZONE UNLESS OTHERWISE NOTED.
4. ALL MEASURED DISTANCES ARE GRID.
5. COMBINED SCALE FACTOR: .99972876
6. WELL FOOTAGES ARE MEASURED AT RIGHT ANGLES TO THE SECTION LINES.



WELL PAD - PUMA 4C-14HZ

MULTI-WELL PLAN
PUMA FED 5S-35HZ,
PUMA 30N-14HZ, PUMA FED 34N-35HZ,
PUMA FED 34C-35HZ, PUMA 4C-14HZ,
PUMA FED 13N-35HZ, PUMA FED 13C-35HZ,
PUMA 4N-14HZ & PUMA 29C-14HZ
LOCATED IN SECTIONS 14, 23, 26 & 35
T1N, R67W, 6TH P.M.
WELD COUNTY, COLORADO

**Kerr-McGee Oil &
Gas Onshore L.P.**
1099 18th Street
Denver, Colorado 80202



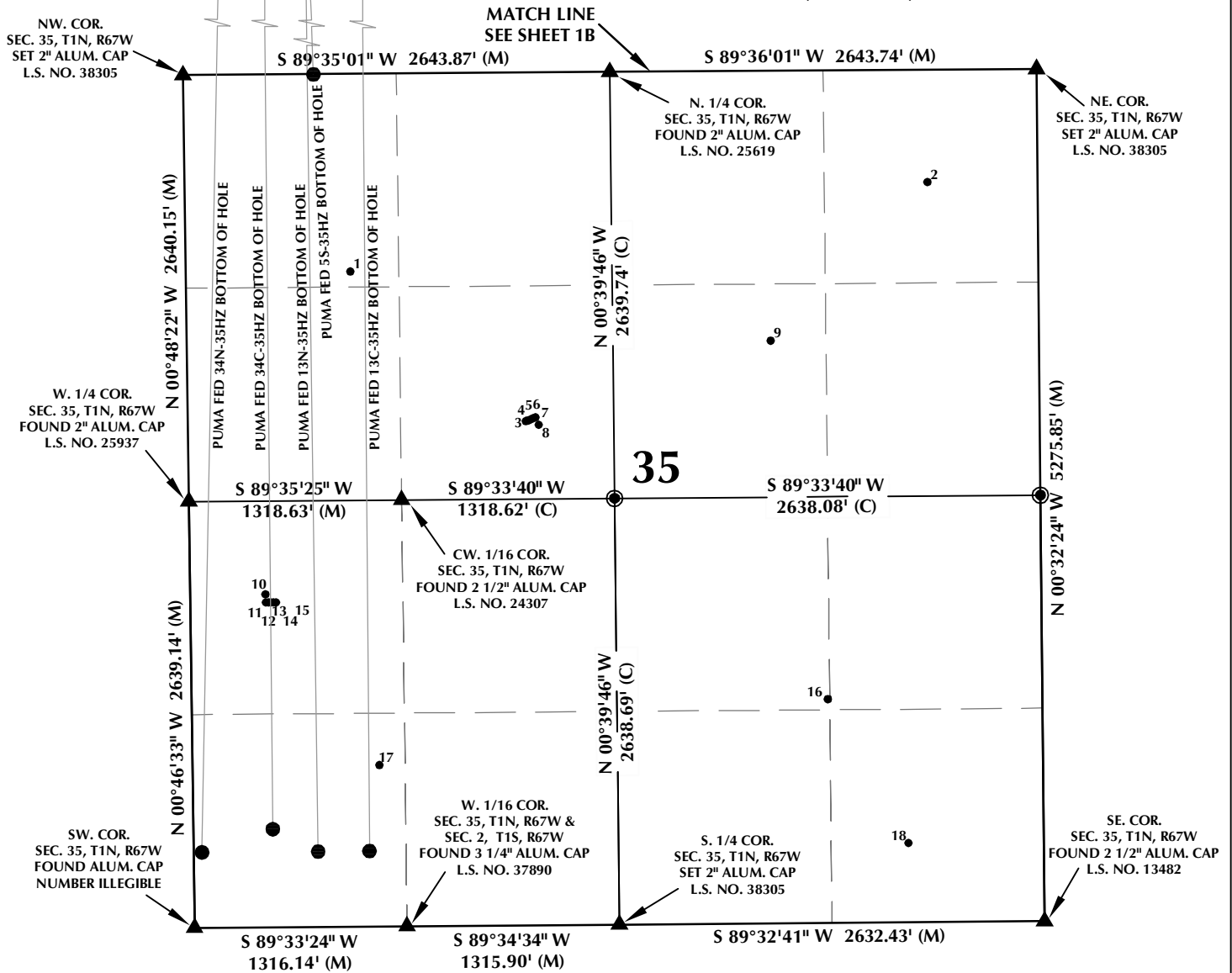
CONSULTING, LLC

SHERIDAN OFFICE
1095 Saberton Avenue
Sheridan, Wyoming 82801
Phone 307-674-0609

LOVELAND OFFICE
1635 Foxtrail Drive, Suite 204
Loveland, Colorado 80538
Phone 970-776-4331

| | | | | |
|---------------|---------|----------------|--------|-----------|
| DRAFTED BY: | LMO | CHECKED BY: | BJR | SHEET NO: |
| DATE DRAFTED: | 8/19/15 | DATE SURVEYED: | 5/7/15 | 1B |
| REVISED: | | FILE NAME: | 15-42 | 1B OF 2 |

MULTI-WELL PLAN SECTION 35, T1N, R67W



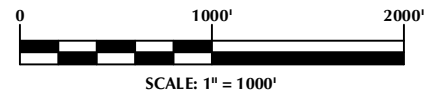
WELL NOTES:

PUMA FED 5S-35HZ
 SURFACE: 290' FSL, 571' FWL
 BOTTOM HOLE: 1' FNL, 809' FWL
PUMA 30N-14HZ
 SURFACE: 290' FSL, 586' FWL
 BOTTOM HOLE: 700' FSL, 289' FWL
PUMA FED 34N-35HZ
 SURFACE: 290' FSL, 616' FWL
 BOTTOM HOLE: 465' FSL, 52' FWL
PUMA FED 34C-35HZ
 SURFACE: 290' FSL, 631' FWL
 BOTTOM HOLE: 606' FSL, 492' FWL
PUMA 4C-14HZ
 SURFACE: 290' FSL, 661' FWL
 BOTTOM HOLE: 700' FSL, 560' FWL

PUMA FED 13N-35HZ
 SURFACE: 290' FSL, 676' FWL
 BOTTOM HOLE: 465' FSL, 771' FWL
PUMA FED 13C-35HZ
 SURFACE: 290' FSL, 706' FWL
 BOTTOM HOLE: 465' FSL, 1090' FWL
PUMA 4N-14HZ
 SURFACE: 290' FSL, 721' FWL
 BOTTOM HOLE: 700' FSL, 962' FWL
PUMA 29C-14HZ
 SURFACE: 290' FSL, 751' FWL
 BOTTOM HOLE: 700' FSL, 1190' FWL

NOTES:

1. INDICATES FOUND SECTION CORNER
2. INDICATES CALCULATED CORNER
3. BASIS OF BEARING DERIVED FROM COLORADO COORDINATE SYSTEM 1983 NORTH ZONE UNLESS OTHERWISE NOTED.
4. ALL MEASURED DISTANCES ARE GRID.
5. COMBINED SCALE FACTOR: .99972876
6. WELL FOOTAGES ARE MEASURED AT RIGHT ANGLES TO THE SECTION LINES.



WELL PAD - PUMA 4C-14HZ

MULTI-WELL PLAN
 PUMA FED 5S-35HZ,
 PUMA 30N-14HZ, PUMA FED 34N-35HZ,
 PUMA FED 34C-35HZ, PUMA 4C-14HZ,
 PUMA FED 13N-35HZ, PUMA FED 13C-35HZ,
 PUMA 4N-14HZ & PUMA 29C-14HZ
 LOCATED IN SECTIONS 14, 23, 26 & 35
 T1N, R67W, 6TH P.M.
 WELD COUNTY, COLORADO

**Kerr-McGee Oil &
 Gas Onshore L.P.**
 1099 18th Street
 Denver, Colorado 80202



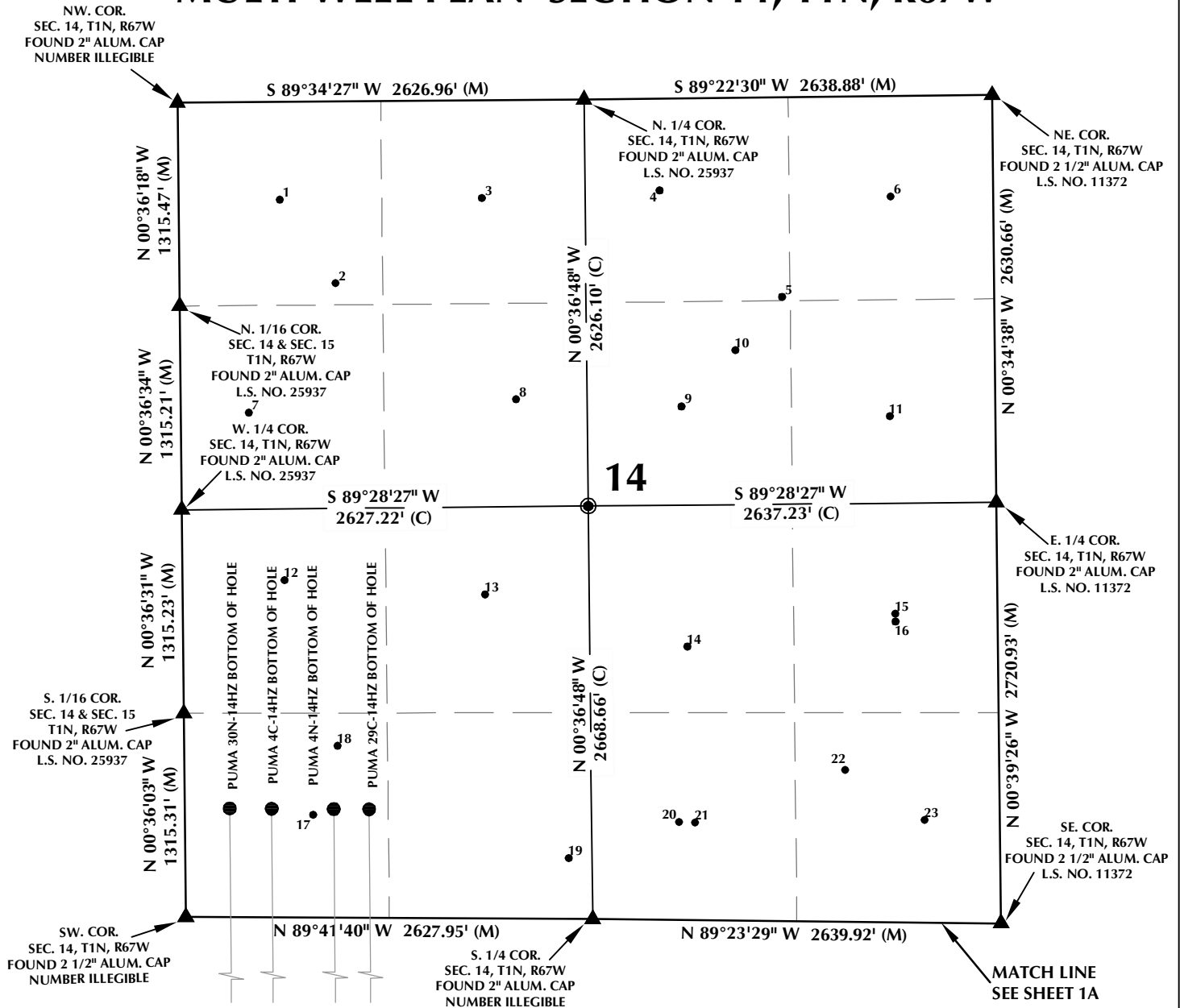
CONSULTING, LLC

SHERIDAN OFFICE
 1095 Saberton Avenue
 Sheridan, Wyoming 82801
 Phone 307-674-0609

LOVELAND OFFICE
 1635 Foxtrail Drive, Suite 204
 Loveland, Colorado 80538
 Phone 970-776-4331

| | | | | |
|---------------|---------|----------------|--------|-----------|
| DRAFTED BY: | LMO | CHECKED BY: | BJR | SHEET NO: |
| DATE DRAFTED: | 8/19/15 | DATE SURVEYED: | 5/7/15 | 1C |
| REVISED: | | FILE NAME: | 15-42 | 1C OF 2 |

MULTI-WELL PLAN SECTION 14, T1N, R67W



WELL NOTES:

PUMA FED 5S-35HZ
 SURFACE: 290' FSL, 571' FWL
 BOTTOM HOLE: 1' FNL, 809' FWL

PUMA 30N-14HZ
 SURFACE: 290' FSL, 586' FWL
 BOTTOM HOLE: 700' FSL, 289' FWL

PUMA FED 34N-35HZ
 SURFACE: 290' FSL, 616' FWL
 BOTTOM HOLE: 465' FSL, 52' FWL

PUMA FED 34C-35HZ
 SURFACE: 290' FSL, 631' FWL
 BOTTOM HOLE: 606' FSL, 492' FWL

PUMA 4C-14HZ
 SURFACE: 290' FSL, 661' FWL
 BOTTOM HOLE: 700' FSL, 560' FWL

PUMA FED 13N-35HZ
 SURFACE: 290' FSL, 676' FWL
 BOTTOM HOLE: 465' FSL, 771' FWL

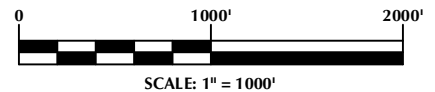
PUMA FED 13C-35HZ
 SURFACE: 290' FSL, 706' FWL
 BOTTOM HOLE: 465' FSL, 1090' FWL

PUMA 4N-14HZ
 SURFACE: 290' FSL, 721' FWL
 BOTTOM HOLE: 700' FSL, 962' FWL

PUMA 29C-14HZ
 SURFACE: 290' FSL, 751' FWL
 BOTTOM HOLE: 700' FSL, 1190' FWL

NOTES:

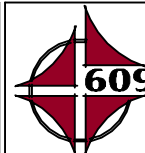
1. INDICATES FOUND SECTION CORNER
2. INDICATES CALCULATED CORNER
3. BASIS OF BEARING DERIVED FROM COLORADO COORDINATE SYSTEM 1983 NORTH ZONE UNLESS OTHERWISE NOTED.
4. ALL MEASURED DISTANCES ARE GRID.
5. COMBINED SCALE FACTOR: .99972876
6. WELL FOOTAGES ARE MEASURED AT RIGHT ANGLES TO THE SECTION LINES.



WELL PAD - PUMA 4C-14HZ

MULTI-WELL PLAN
 PUMA FED 5S-35HZ,
 PUMA 30N-14HZ, PUMA FED 34N-35HZ,
 PUMA FED 34C-35HZ, PUMA 4C-14HZ,
 PUMA FED 13N-35HZ, PUMA FED 13C-35HZ,
 PUMA 4N-14HZ & PUMA 29C-14HZ
 LOCATED IN SECTIONS 14, 23, 26 & 35
 T1N, R67W, 6TH P.M.
 WELD COUNTY, COLORADO

**Kerr-McGee Oil &
 Gas Onshore L.P.**
 1099 18th Street
 Denver, Colorado 80202



CONSULTING, LLC

SHERIDAN OFFICE
 1095 Saberton Avenue
 Sheridan, Wyoming 82801
 Phone 307-674-0609

LOVELAND OFFICE
 1635 Foxtrail Drive, Suite 204
 Loveland, Colorado 80538
 Phone 970-776-4331

| | | | | |
|---------------|---------|----------------|--------|-----------|
| DRAFTED BY: | LMO | CHECKED BY: | BJR | SHEET NO: |
| DATE DRAFTED: | 8/19/15 | DATE SURVEYED: | 5/7/15 | 1D |
| REVISED: | | FILE NAME: | 15-42 | 1D OF 2 |

MULTI-WELL PLAN

SECTION 23, T1N, R67W

| NUMBER | WELL NAME | API NUMBER | LATITUDE (NAD 83) | LONGITUDE (NAD 83) | SURFACE ELEVATION | TOTAL DEPTH |
|--------|-------------------------------|--------------|-------------------|--------------------|-------------------|-------------|
| 1 | THREE FARMS 11-23 | 05-123-15962 | 40.041454 | -104.864950 | 4965.7 | 4884 |
| 2 | DOROTHY SEBOLD UNIT-TRUE 1 | 05-123-11254 | 40.040604 | -104.863711 | 4960.4 | 8215 |
| 3 | STIEBER, EDWARD 1 | 05-123-10115 | 40.041974 | -104.859542 | 4957.1 | 4858 |
| 4 | *HUETT FRED L 2 | 05-123-09676 | 40.041868 | -104.856351 | 4950.0 | 4856 |
| 5 | JOSEPH HUETT UNIT 1 | 05-123-07805 | 40.040330 | -104.853224 | 4948.1 | 8151 |
| 6 | *FRED L HUETT 1 | 05-123-09572 | 40.041568 | -104.850371 | 4937.0 | 4910 |
| 7 | *T. A. PAIGE 1 | 05-123-09817 | 40.038408 | -104.861271 | 4948.0 | 4890 |
| 8 | *PAIGE, ANSON T 2 | 05-123-10351 | 40.038728 | -104.860991 | 4948.0 | 4989 |
| 9 | JOSEPH L HUETT UNIT C 1 | 05-123-09671 | 40.038517 | -104.854872 | 4947.7 | 4889 |
| 10 | *HUETT JOSEPH B 1 | 05-123-09480 | 40.038218 | -104.850901 | 4944.0 | 4888 |
| 11 | TANG 1 | 05-123-09559 | 40.035207 | -104.864931 | 4964.9 | 4900 |
| 12 | *LEONA 1 | 05-123-10475 | 40.034698 | -104.864971 | 4964.0 | 7752 |
| 13 | SEBOLD, DOROTHY B-1 | 05-123-10126 | 40.034388 | -104.860416 | 4984.9 | 4964 |
| 14 | WATTENBERG, HENRY E B-1 | 05-123-09678 | 40.034308 | -104.855346 | 4976.5 | 4900 |
| 15 | HUETT, JOSEPH UNIT 2 | 05-123-10905 | 40.033821 | -104.851916 | 4977.7 | 8263 |
| 16 | *HENRY E WATTENBURG UNIT 1 | 05-123-09621 | 40.034718 | -104.850161 | 4977.0 | 4905 |
| 17 | DOROTHY SEBOLD UNIT 1 | 05-213-08119 | 40.032913 | -104.862198 | 4988.4 | 8240 |
| 18 | SEBOLD, DOROTHY B-2 | 05-123-10234 | 40.030923 | -104.860176 | 4993.9 | 4985 |
| 19 | WATTENBERG HENRY E UT B 2 | 05-123-10113 | 40.031156 | -104.855446 | 4991.5 | 4998 |
| 20 | ZEHNDER 15-23A | 05-123-20692 | 40.031002 | -104.855107 | 4990.0 | 8275 |
| 21 | WATTENBERG, HENRY E. UNIT C-1 | 05-123-10112 | 40.031515 | -104.850265 | 4983.8 | 4970 |

NOTES:

- * INDICATES EXISTING WELLS THAT WERE NOT SURVEYED BUT DERIVED FROM COLORADO OIL AND GAS CONSERVATION COMMISSION (COGCC).

**EXISTING WELL EXHIBIT
SECTION 23, T1N, R67W, 6TH P.M.
WELD COUNTY, COLORADO**

**Kerr-McGee Oil &
Gas Onshore L.P.**
1099 18th Street
Denver, Colorado 80202



CONSULTING, LLC

SHERIDAN OFFICE
1095 Saberton Avenue
Sheridan, Wyoming 82801
Phone 307-674-0609

LOVELAND OFFICE
1635 Foxtrail Drive, Suite 204
Loveland, Colorado 80538
Phone 970-776-4331

| | | | | |
|---------------|---------|----------------|---------|-----------|
| DRAFTED BY: | LMO | CHECKED BY: | BJR | SHEET NO: |
| DATE DRAFTED: | 7/13/15 | DATE SURVEYED: | 5/15/15 | 2A |
| REVISED: | | FILE NAME: | 15-42 | 2A OF 2 |

MULTI-WELL PLAN

SECTION 26, T1N, R67W

| NUMBER | WELL NAME | API NUMBER | LATITUDE (NAD 83) | LONGITUDE (NAD 83) | SURFACE ELEVATION | TOTAL DEPTH |
|--------|----------------------|---------------|----------------------|-----------------------|----------------------|----------------|
| 1 | MOSER C UNIT 1 | 05-123-10488 | 40.026532 | -104.863383 | 5014.8 | 8300 |
| 2 | MOSER 21-26 | 05-123-21533 | 40.027916 | -104.859678 | 5002.5 | 8299 |
| 3 | MOSER 1 | 05-123-08041 | 40.025844 | -104.853174 | 5001.0 | 8260 |
| 4 | MOSER 1-A | 05-123-09700 | 40.027491 | -104.850838 | 4990.7 | 4970 |
| 5 | MOSER 12-26 | 05-123-21066 | 40.023975 | -104.865500 | 5038.7 | 8341 |
| 6 | SPARROW 6-26 | 05-123-19553 | 40.023366 | -104.859460 | 5029.3 | 8324 |
| 7 | HOWARD 13-26 | 05-123-19946 | 40.020287 | -104.864892 | 5041.9 | 8340 |
| 8 | HOWARD 23-26 | 05-123-20055 | 40.020289 | -104.860149 | 5028.0 | 8330 |
| 9 | GRENAMEYER 33-26 | 05-123-21341 | 40.020810 | -104.856037 | 5009.1 | 8306 |
| 10 | *GRENAMEYER E UNIT 1 | 05-123-10491 | 40.019110 | -104.852320 | 4997.0 | 8310 |
| 11 | GRENAMEYER 43-26 | 05-123-21344 | 40.020779 | -104.850139 | 4988.2 | 8271 |
| 12 | GRENAMEYER 1 | 05-123-07152 | 40.016341 | -104.864662 | 5053.5 | 8315 |
| 13 | GRENAMEYER CD26-A | 05-123-21028 | 40.018025 | -104.862256 | 5038.8 | 8355 |
| 14 | GRENAMEYER 24-26 | 05-123-21027 | 40.016252 | -104.859526 | 5034.9 | 8337 |
| 15 | GRENAMEYER 4-6-26 | 05-123-25942 | 40.016366 | -104.859463 | 5034.5 | 8439 |
| 16 | BELL 34-26 | 05-123-19892 | 40.016682 | -104.854574 | 5015.2 | 8355 |
| 17 | GRENAMEYER 44-26 | 05-123-21343 | 40.016174 | -104.850028 | 5001.3 | 8303 |

NOTES:

- * INDICATES EXISTING WELLS THAT WERE NOT SURVEYED BUT DERIVED FROM COLORADO OIL AND GAS CONSERVATION COMMISSION (COGCC).

**EXISTING WELL EXHIBIT
SECTION 26, T1N, R67W, 6TH P.M.
WELD COUNTY, COLORADO**

**Kerr-McGee Oil &
Gas Onshore L.P.**
1099 18th Street
Denver, Colorado 80202



CONSULTING, LLC

SHERIDAN OFFICE
1095 Saberton Avenue
Sheridan, Wyoming 82801
Phone 307-674-0609

LOVELAND OFFICE
1635 Foxtrail Drive, Suite 204
Loveland, Colorado 80538
Phone 970-776-4331

| | | | | |
|---------------|---------|----------------|---------|-----------|
| DRAFTED BY: | LMO | CHECKED BY: | BJR | SHEET NO: |
| DATE DRAFTED: | 7/13/15 | DATE SURVEYED: | 5/15/15 | 2B |
| REVISED: | | FILE NAME: | 15-42 | 2B OF 2 |

MULTI-WELL PLAN

SECTION 35, T1N, R67W

| NUMBER | WELL NAME | API NUMBER | LATITUDE (NAD 83) | LONGITUDE (NAD 83) | SURFACE ELEVATION | TOTAL DEPTH |
|--------|-------------------------|---------------|----------------------|-----------------------|----------------------|----------------|
| 1 | NOEL HUBERT UNIT-TRUE 1 | 05-123-11440 | 40.011508 | -104.863549 | 5031.7 | 8310 |
| 2 | SAKATA 1-35 | 05-123-22534 | 40.012959 | -104.850773 | 4998.2 | 8304 |
| 3 | DRY CREEK 22-35 | 05-123-31115 | 40.008942 | -104.859694 | 5010.5 | 8422 |
| 4 | DRY CREEK 5-35 | 05-123-31121 | 40.008958 | -104.859640 | 5010.9 | 8518 |
| 5 | DRY CREEK 4-35 | 05-123-31099 | 40.008974 | -104.859588 | 5010.9 | 8359 |
| 6 | DRY CREEK 3-35 | 05-123-31100 | 40.008991 | -104.859534 | 5010.6 | 8526 |
| 7 | DRY CREEK 21-35 | 05-123-31104 | 40.009007 | -104.859482 | 5011.0 | 8411 |
| 8 | RULE 6-35A | 05-123-20994 | 40.008882 | -104.859410 | 5006.7 | 8435 |
| 9 | GEORGE SCHMIDT UNIT 1 | 05-123-08266 | 40.010282 | -104.854267 | 5005.7 | 8292 |
| 10 | RULE 12-35A | 05-123-20746 | 40.006032 | -104.865478 | 5031.9 | 8345 |
| 11 | DRY CREEK 13-35 | 05-123-31023 | 40.005898 | -104.865473 | 5031.3 | 8158 |
| 12 | DRY CREEK 35-35 | 05-123-31018 | 40.005896 | -104.865417 | 5032.0 | 8742 |
| 13 | DRY CREEK 14-35 | 05-123-31022 | 40.005895 | -104.865361 | 5031.9 | 8714 |
| 14 | DRY CREEK 23-35 | 05-123-31010 | 40.005896 | -104.865305 | 5031.7 | 8750 |
| 15 | DRY CREEK 11-35 | 05-123-31019 | 40.005895 | -104.865247 | 5032.2 | 8509 |
| 16 | SCHMIDT 33-35 | 05-123-15676 | 40.004183 | -104.853059 | 5004.4 | 8463 |
| 17 | *HUBERT NOEL 1 | 05-123-08019 | 40.003119 | -104.862981 | 5026.0 | 8295 |
| 18 | SCHMIDT 44-35 | 05-123-21414 | 40.001730 | -104.851302 | 5002.6 | 8264 |

NOTES:

- * INDICATES EXISTING WELLS THAT WERE NOT SURVEYED BUT DERIVED FROM COLORADO OIL AND GAS CONSERVATION COMMISSION (COGCC).

**EXISTING WELL EXHIBIT
SECTION 35, T1N, R67W, 6TH P.M.
WELD COUNTY, COLORADO**

**Kerr-McGee Oil &
Gas Onshore L.P.**
1099 18th Street
Denver, Colorado 80202



CONSULTING, LLC

SHERIDAN OFFICE
1095 Saberton Avenue
Sheridan, Wyoming 82801
Phone 307-674-0609

LOVELAND OFFICE
1635 Foxtrail Drive, Suite 204
Loveland, Colorado 80538
Phone 970-776-4331

| | | | | |
|---------------|---------|----------------|---------|-----------------------------------|
| DRAFTED BY: | LMO | CHECKED BY: | BJR | SHEET NO: 2C 2C OF 2 |
| DATE DRAFTED: | 7/13/15 | DATE SURVEYED: | 5/15/15 | |
| REVISED: | | FILE NAME: | 15-42 | |

MULTI-WELL PLAN

SECTION 14, T1N, R67W

| NUMBER | WELL NAME | API NUMBER | LATITUDE (NAD 83) | LONGITUDE (NAD 83) | SURFACE ELEVATION | TOTAL DEPTH |
|--------|-------------------------------|---------------|----------------------|-----------------------|----------------------|----------------|
| 1 | CAVANAUGH, FRANK M 3 | 05-123-09021 | 40.056544 | -104.864997 | 5033.7 | 4910 |
| 2 | DOVERSBERGER UNIT A 2 | 05-123-14855 | 40.055060 | -104.863723 | 5020.6 | 8296 |
| 3 | CAVANAUGH, FRANK M 1 | 05-123-07645 | 40.056547 | -104.860334 | 5037.9 | 4890 |
| 4 | DOVERSBERGER, EUGENE 3 | 05-123-09037 | 40.056660 | -104.856227 | 4999.3 | 4880 |
| 5 | *DOVERSBERGER EUGENE 5 | 05-123-13219 | 40.054758 | -104.853421 | 4982.0 | 4910 |
| 6 | DOVERSBERGER EUGENE 1A | 05-123-07676 | 40.056522 | -104.850897 | 4972.1 | 8262 |
| 7 | *CAVANAUGH, FRANK M 2 | 05-123-08696 | 40.052768 | -104.865752 | 5007.0 | 4910 |
| 8 | CAVANAUGH, FRANK M 4 | 05-123-09022 | 40.052975 | -104.859576 | 5009.2 | 4925 |
| 9 | DOVERSBERGER, EUGENE 2 | 05-123-07715 | 40.052824 | -104.855760 | 4996.2 | 4887 |
| 10 | DOVERSBERGER UNIT A 1 | 05-123-07945 | 40.053820 | -104.854503 | 4990.2 | 8139 |
| 11 | *DOVERSBERGER EUGENE 4 | 05-123-10116 | 40.052628 | -104.850951 | 4968.0 | 4885 |
| 12 | CLARK, FRANCIS DOUGHTY 2 | 05-123-09094 | 40.049799 | 104.864948 | 4993.7 | 4900 |
| 13 | FRANCIS DOUGHTY CLARK 1A | 05-123-07817 | 40.049520 | -104.860326 | 4986.9 | 8152 |
| 14 | *HEIT ANTONE C B-2 | 05-123-09619 | 40.048568 | -104.855661 | 4965.0 | 4874 |
| 15 | HEIT, ANTONE C B-1 | 05-123-07879 | 40.049126 | -104.850856 | 4959.5 | 4863 |
| 16 | HIGHUM FOUNDERS 1 | 05-123-20763 | 40.048985 | -104.850855 | 4958.9 | 8160 |
| 17 | *CLARK FRANCIS DOUGHTY 5 | 05-123-12601 | 40.045638 | -104.864332 | 4977.0 | 8182 |
| 18 | FRANCIS D. CLARK UNIT B 1 | 05-123-07740 | 40.046851 | -104.863756 | 4986.9 | 8156 |
| 19 | *CLARK, FRANCIS DOUGHTY 3 | 05-123-09664 | 40.044838 | -104.858431 | 4958.0 | 4890 |
| 20 | NORDEN 15-14A | 05-123-21083 | 40.045458 | -104.855884 | 4953.1 | 8139 |
| 21 | KIEFER GEORGE W UT B 1A | 05-123-07878 | 40.045447 | -104.855516 | 4952.7 | 4860 |
| 22 | FRANCIS DOUGHTY CLARK UNIT B- | 05-123-10870 | 40.046358 | -104.852040 | 4952.0 | 8130 |
| 23 | *KIEFER GEORGE W UT B 3 | 05-123-09616 | 40.045468 | -104.850221 | 4935.0 | 4846 |

NOTES:

- * INDICATES EXISTING WELLS THAT WERE NOT SURVEYED BUT DERIVED FROM COLORADO OIL AND GAS CONSERVATION COMMISSION (COGCC).

**EXISTING WELL EXHIBIT
SECTION 14, T1N, R67W, 6TH P.M.
WELD COUNTY, COLORADO**

**Kerr-McGee Oil &
Gas Onshore L.P.**
1099 18th Street
Denver, Colorado 80202



CONSULTING, LLC

SHERIDAN OFFICE
1095 Saberton Avenue
Sheridan, Wyoming 82801
Phone 307-674-0609

LOVELAND OFFICE
1635 Foxtrail Drive, Suite 204
Loveland, Colorado 80538
Phone 970-776-4331

| | | | | |
|---------------|---------|----------------|---------|-----------------------------------|
| DRAFTED BY: | LMO | CHECKED BY: | BJR | 2D SHEET NO: 2D OF 2 |
| DATE DRAFTED: | 7/13/15 | DATE SURVEYED: | 5/15/15 | |
| REVISED: | | FILE NAME: | 15-42 | |