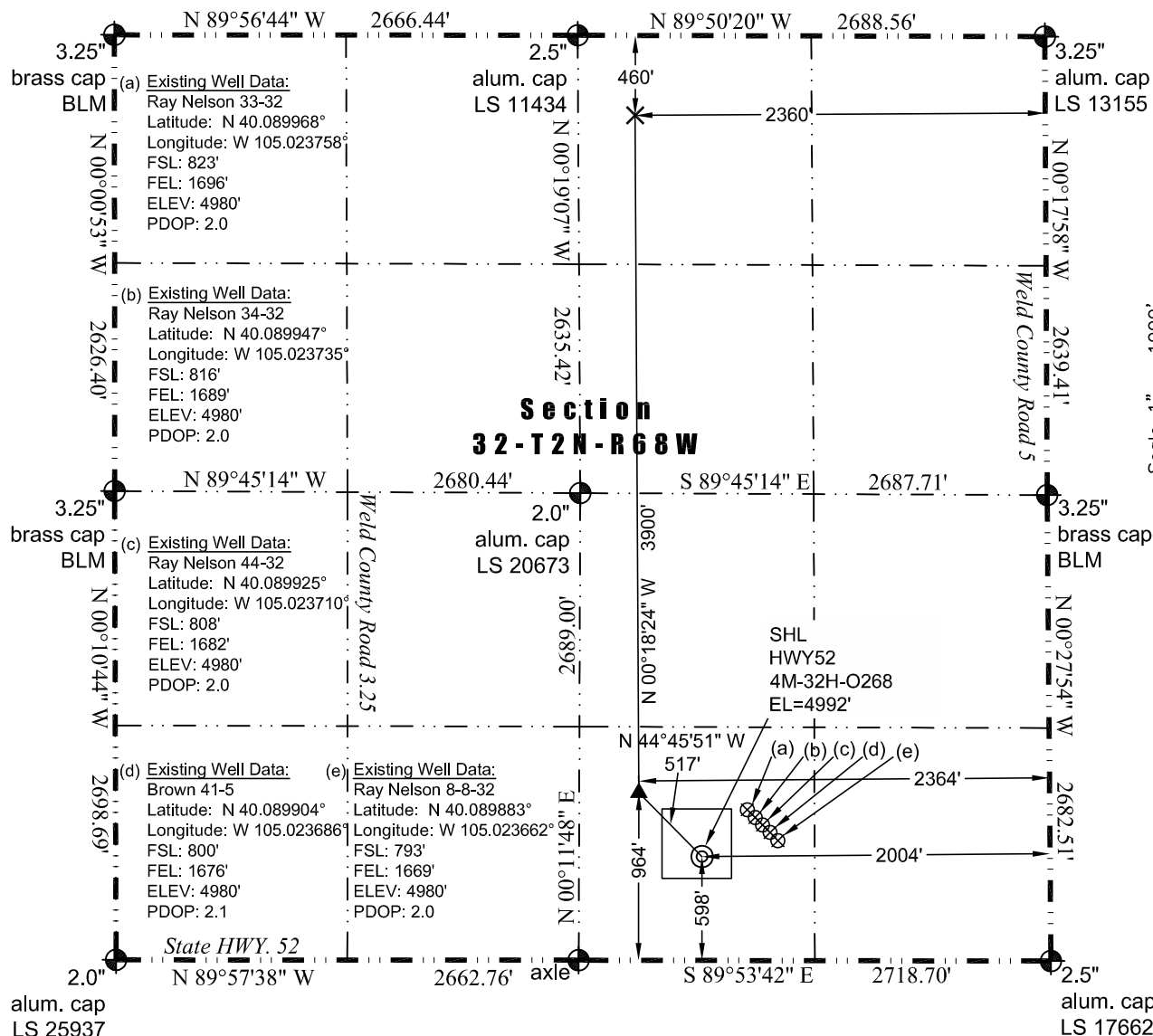




WELL LOCATION CERTIFICATE

THIS MAP DOES NOT REPRESENT A BOUNDARY SURVEY

Washburn Land Surveying
www.WashburnSurveying.com
970-232-9645



Scale 1" = 1000'
approximate scale

In accordance with a request from Jay Knutson of EnCana Oil & Gas (USA) Inc., Washburn Land Surveying, LLC has determined the location of the **HWY52 4M-32H-O268** well site to be SHL: 598' FSL and 2004' FEL, (TPZ: 964' FSL and 2364' FEL), (BHL: 460' FNL and 2360' FEL), as measured at ninety (90) degrees from the section lines of Section 32, Township 2 North, Range 68 West of the 6th Principal Meridian, Weld County Colorado.

Proposed Well Data:

Latitude: N 40.089355° (TPZ: 40.090367°) (BHL: 40.101073°)
Longitude: W 105.024857° (TPZ: 105.026150°) (BHL: 105.026150°)
PDOP: 1.3

Nearest:

Building: 563' southwest
Building Unit: 665' southwest
Public Road: 659' south
Property Line: 386' northeast
Existing Well: Ray Nelson 33-32, 380' northeast

Above Ground Utility: 619' south
Railroad: +5,280'
Well Window: SHL is 126' inside
High Occupancy Building Unit: +5,280'

Notes:

- 1) Bearings and distances based on NAD 83 Colorado North State Plane Coordinate, using RTK GPS observations taken 5/14/15 by operator Jason Dahlman.
- 2) Conversion factor to ground (1.0002793972).
- 3) Elevations based on NAVD 88 GPS heights and Geoid 2009 corrections.
- 4) See Location Drawing for visible improvements within 500 feet of Pad Site.
- 5) The surface use is a cultivated field.

NOTICE: According to Colorado law you must commence any legal action based upon any defect in this W.L.C. within three years after you first discover such defect. In no event may any action based upon any defect in this W.L.C. be commenced more than ten years from this said date of the certification shown hereon.

LEGEND

- ⊗ - Existing Well
- ⊕ - Found Survey Monument
- (c) - Calculated Dimension
- ⊙ - Surface Hole Location (SHL)
- ▲ - Top of Producing Zone (TPZ)
- × - Bottom Hole Location (BHL)

I hereby certify that this Well Location Certificate was prepared by me or under my direct supervision on 6/16/2015 for and on behalf of EnCana Oil & Gas (USA) Inc. That it is not a Land Survey Plat or an Improvement Survey Plat and that it is not to be relied upon for establishment of fences, buildings, or other future improvement lines.

John Robert McGehee LS#38219
Well: HWY52 4M-32H-O268 WLC