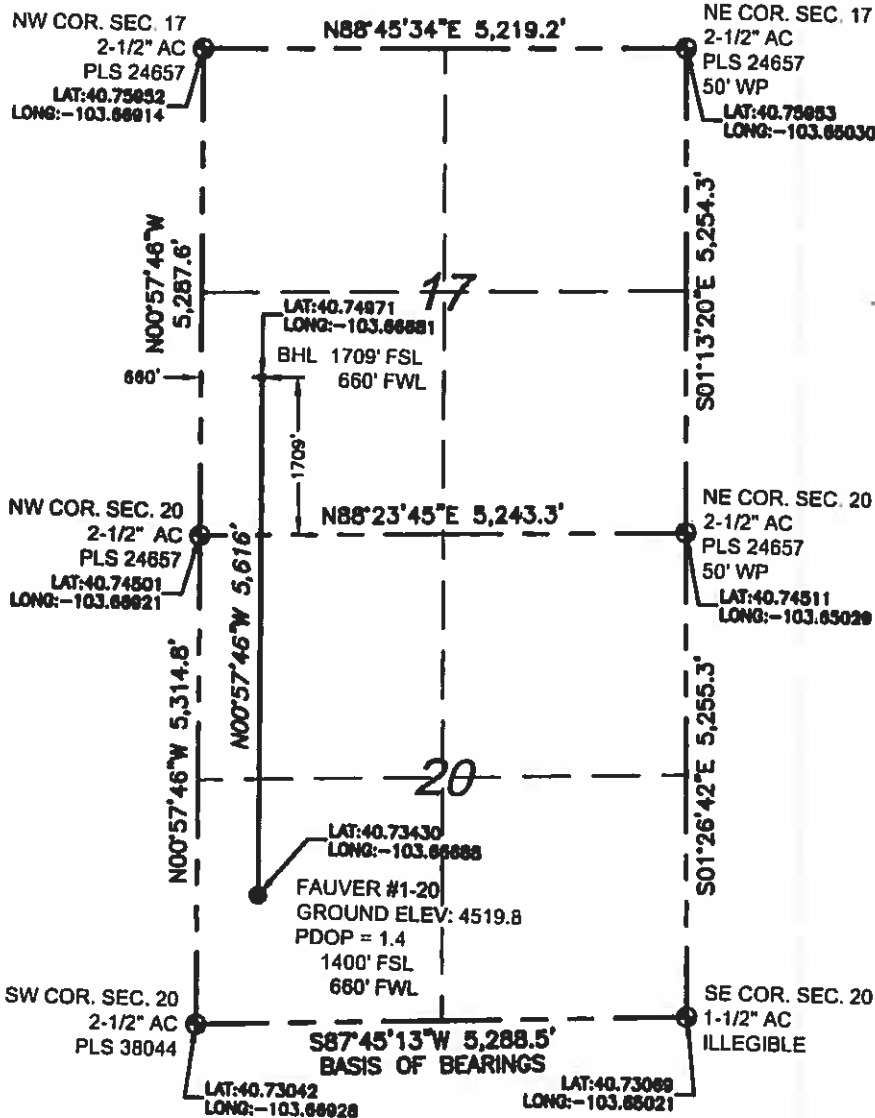


# WELL LOCATION CERTIFICATE

SECTIONS 20 & 17, TOWNSHIP 9 NORTH, RANGE 56 WEST, 6TH P.M.



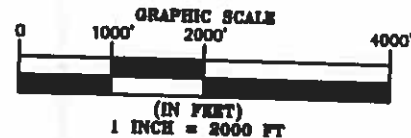
**NEAREST VISIBLE ITEMS**  
 PUBLIC ROAD - 1385'± S  
 PROPERTY LINE - 660' W  
 POWER LINE - 2577'± N  
 WATER WELL - 2772'± NE  
 BUILDING UNIT - 5280'±  
 BUILDING - 5280'±  
 RAILROAD - 5280'±

THERE ARE NO HOBU OR DOAA WITHIN A MILE OF THE SURFACE HOLE.

## LEGEND



SECTION CORNER WITH MONUMENT  
 PROPOSED WELL  
 PROPOSED BOTTOM HOLE  
 SECTION LINE  
 QUARTER SECTION LINE



I HEREBY STATE TO NEWPEX, LLC THAT THE SURFACE LOCATION FOR THE PROPOSED WELL FAUVER #1-20 IS LOCATED 1400' FSL AND 660' FWL, SECTION 20, T9N, R56W, 6TH P.M.

## NOTES:

1. THIS A HORIZONTAL DRILLED WELL BOTTOM HOLE AT 1709' FSL, 660' FWL, SECTION 17.
2. SEE LOCATION DRAWING FOR IMPROVEMENTS
3. ELEVATION SOURCE: USGS QUAD MAP CONTOURS, 7.5 MINUTE SERIES, NGVD 1929 DATUM.
4. SECTION DIMENSIONS SHOWN ARE FIELD MEASURED. EXTERIOR SECTION LINES ARE DRAWN TO SCALE. DISTANCES TO WELL LOCATION ARE PERPENDICULAR TO SECTION LINES.
5. THIS IS NOT A MONUMENTED BOUNDARY. THIS IS INTENDED ONLY TO DEPICT THE PROPOSED WELL LOCATION AND SECTION LINES.



THOMAS G. CARLSON, PLS 24857  
 SAM, LLC



SURVEYING AND MAPPING LLC (SAM)  
 555 Zang St., Suite 210  
 Lakewood CO 80226  
 Ph: (303) 988-5852  
 Fax: (303) 988-2195  
 EMAIL: SAM@SAM.BIZ

## FAUVER #1-20 (HORIZONTAL)

LOCATION:  
 SURFACE HOLE: SEC. 20, T9N, R56W, 6TH P.M.  
 WELD COUNTY, COLORADO  
 BOTTOM HOLE: SEC. 17, T9N, R56W, 6TH P.M.  
 WELD COUNTY, COLORADO

DRAWN BY: JAH  
 CHECKED BY: T. CARLSON  
 SHEET No. 1 OF 1

FIELD DATE 09/16/15	SCALE: 1" = 2000'	PROJ. No. 35209	Dwg. No. FAUVER #1-20 WELL CERTIFICATE.dwg
EXHIBIT DATE 09/22/2015			

PATH: H:\1015035209\100\SURVEY\03EXHIBITS\DWG\FAUVER #1-20 WELL CERTIFICATE.DWG