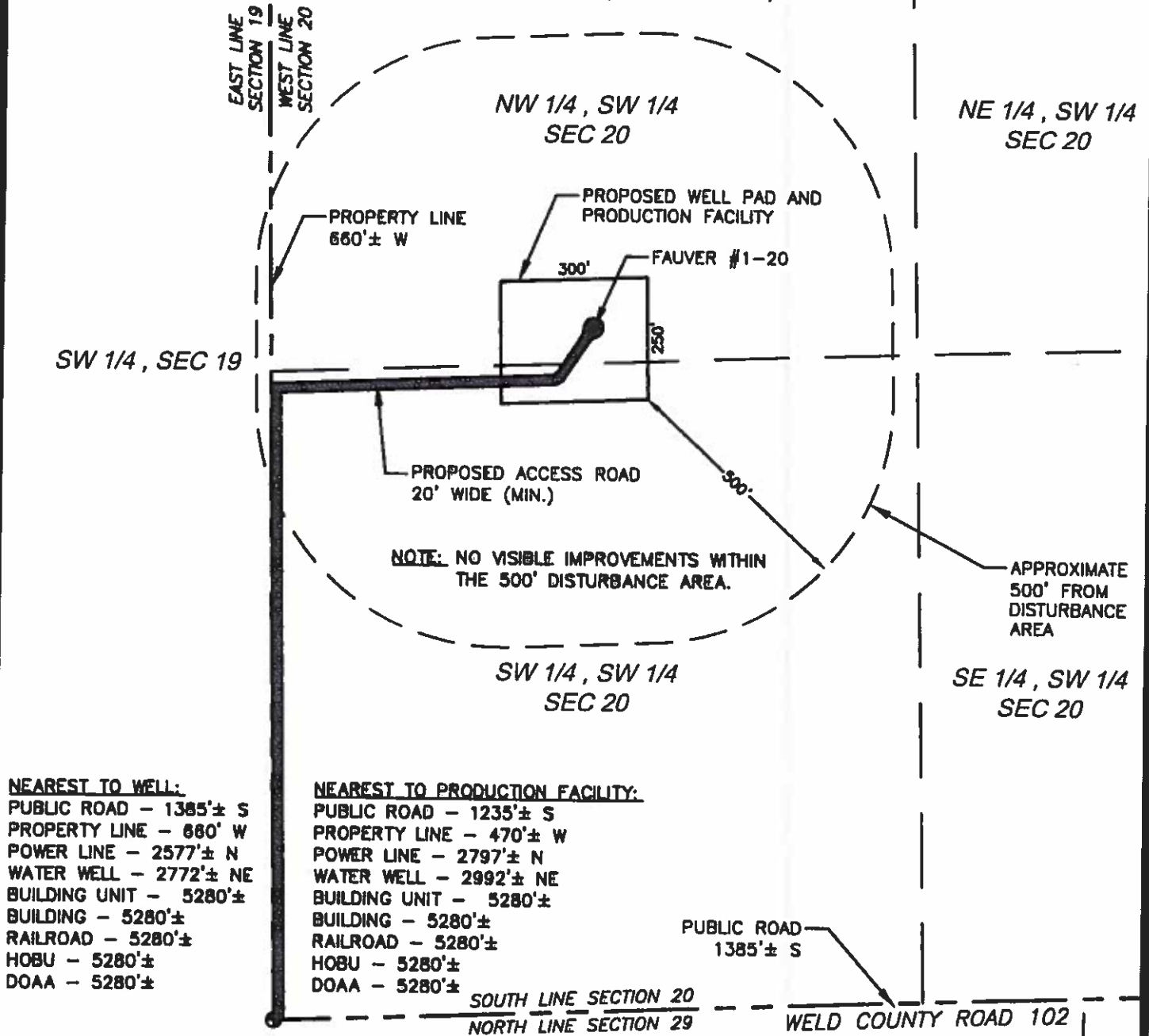
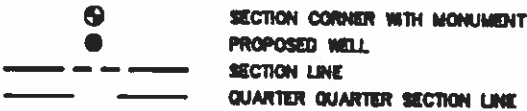


LOCATION DRAWING

SECTION 20, TOWNSHIP 9 NORTH, RANGE 56 WEST, 6TH P.M.



LEGEND

**NOTES:**

1. ONLY VISIBLE IMPROVEMENTS WITHIN 500 FEET OF THE DISTURBED AREA ARE SHOWN.
2. DISTURBANCES SHOWN ARE NEAREST TO THE WELL OR THE EDGE OF THE PRODUCTION FACILITY.
3. THIS IS NOT A MONUMENTED BOUNDARY. THIS EXHIBIT IS INTENDED ONLY TO DEPICT EXISTING IMPROVEMENTS AT THE PROPOSED WELL LOCATION.

FIELD DATE

NA

EXPIRATION DATE

SCALE:

PROJ. No.

Run No.

FAUVER #1-20 LOCATION DWG.dwg



SURVEYING AND MAPPING LLC (SAM)
555 Zang St., Suite 210
Lakewood CO, 80228
Ptn: (303) 988-5852
Fax: (303) 988-2195
EMAIL: SAM@SAM.BIZ

FAUVER #1-20 (VERTICAL)

LOCATION:

SEC. 20, T9N, R56W, 6TH P.M.
WELD COUNTY, COLORADO

DRAWN BY:
JAH

CHECKED BY:
T. CARLSON

SHEET No.
1 OF 1