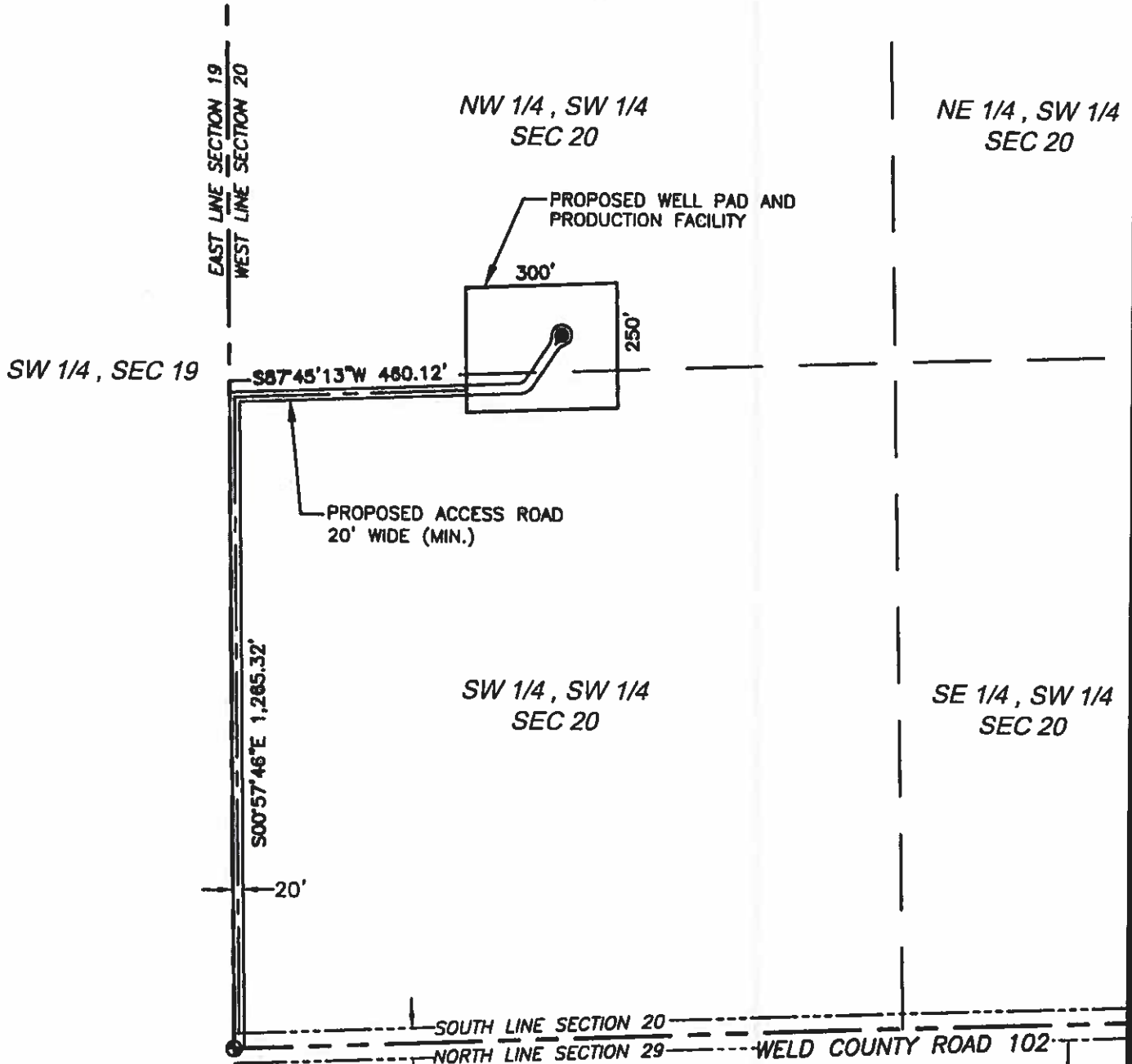


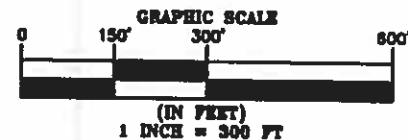
ACCESS ROAD DRAWING

SECTION 20, TOWNSHIP 9 NORTH, RANGE 56 WEST, 6TH P.M.



LEGEND

- ⊕ SECTION CORNER WITH MONUMENT
- PROPOSED WELL
- SECTION LINE
- QUARTER QUARTER SECTION LINE



BEARINGS AND DISTANCES ARE SHOWN AT
CENTERLINE OF 20' WIDE ROAD.
OVERALL CENTERLINE LENGTH = 1725.44



SURVEYING AND MAPPING LLC (SAM)
555 Zeng St., Suite 210
Lakewood CO, 80228
Ph: (303) 988-5852
Fax: (303) 988-2195
EMAIL: SAM@SAM.BIZ

FAUVER #1-20 (VERTICAL)

LOCATION

SEC. 20, T9N, R56W, 6TH P.M.
WELD COUNTY, COLORADO

FIELD DATE

NA

EXHIBIT DATE

09/22/2015

SCALE:

1" = 300'

PROJ. No.

35209

Dwg. No.

FAUVER #1-20 ACCESS RD DWG.dwg

DRAWN BY:

JAH

CHECKED BY:

T. CARLSON

SHEET No.

1 OF 1