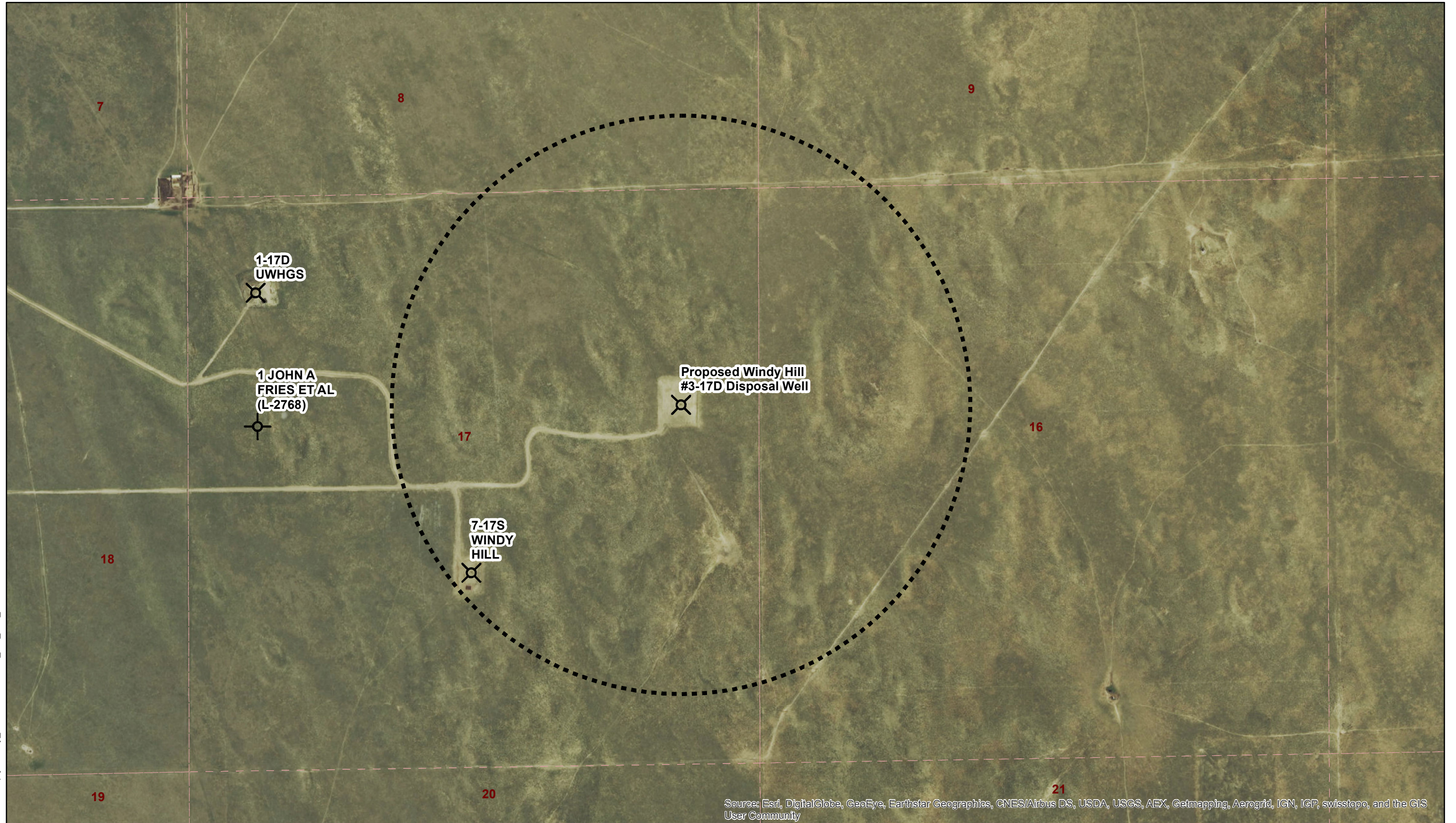





MAP OF O&G WELLS IN AREA OF REVIEW

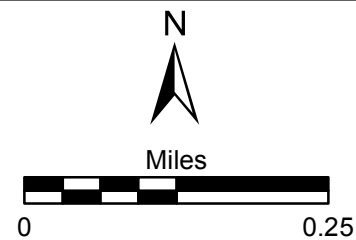
Path: N:\arcpj2\Windy_Hill\mxd\O&GWells_half_mile_317D.mxd



Source: Esri, DigitalGlobe, GeoEye, Earthstar Geographics, CNES/Airbus DS, USDA, USGS, AEX, Getmapping, Aerogrid, IGN, IGP, swisstopo, and the GIS User Community



- Legend**
-  Drilled and abandoned well
 -  Inactive injection well
 -  1/2 mile radius



October, 2015

Figure 1

Map of O&G Wells in Area of Review

Windy Hill Water Operations, LLC

114-910338