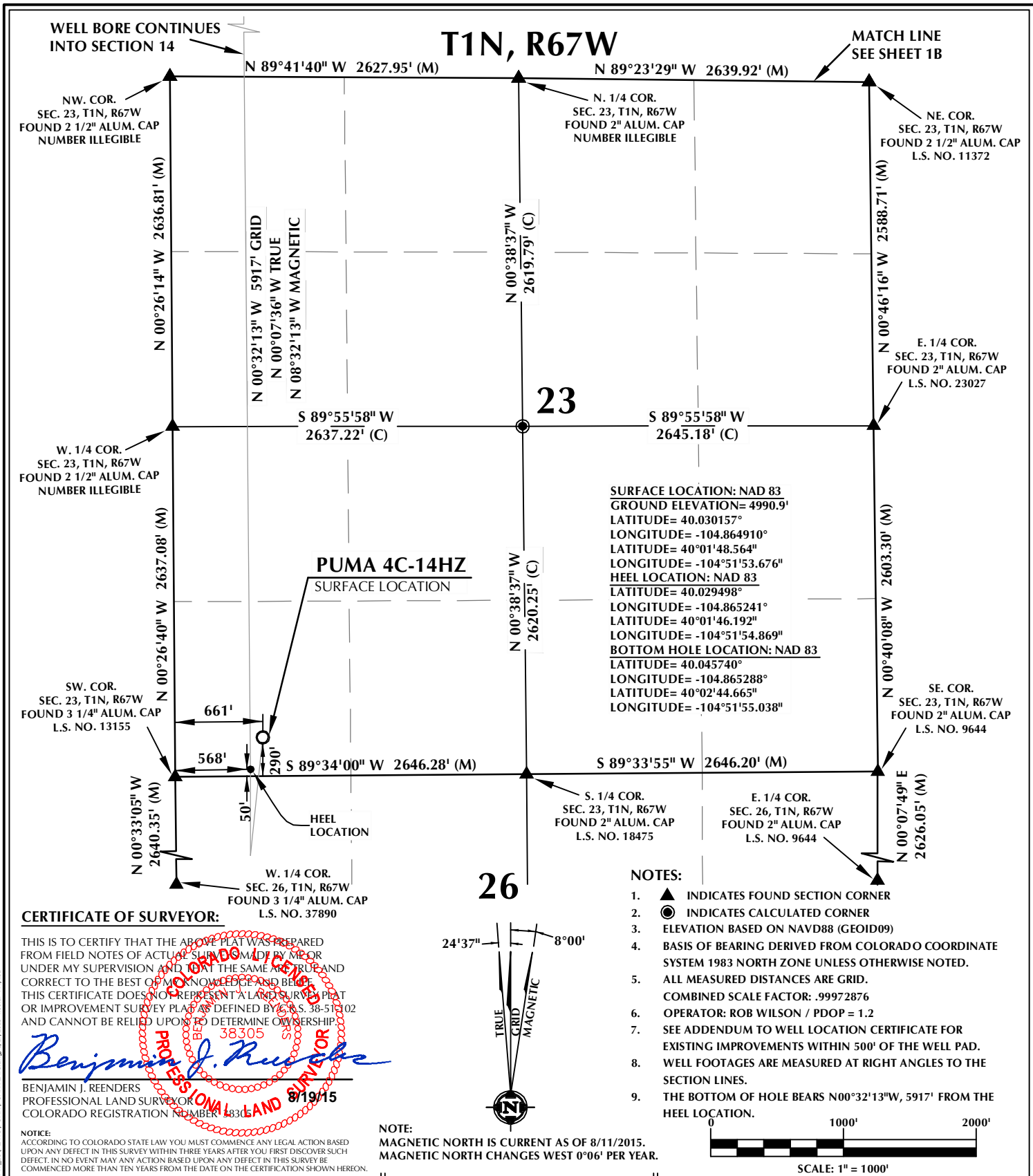
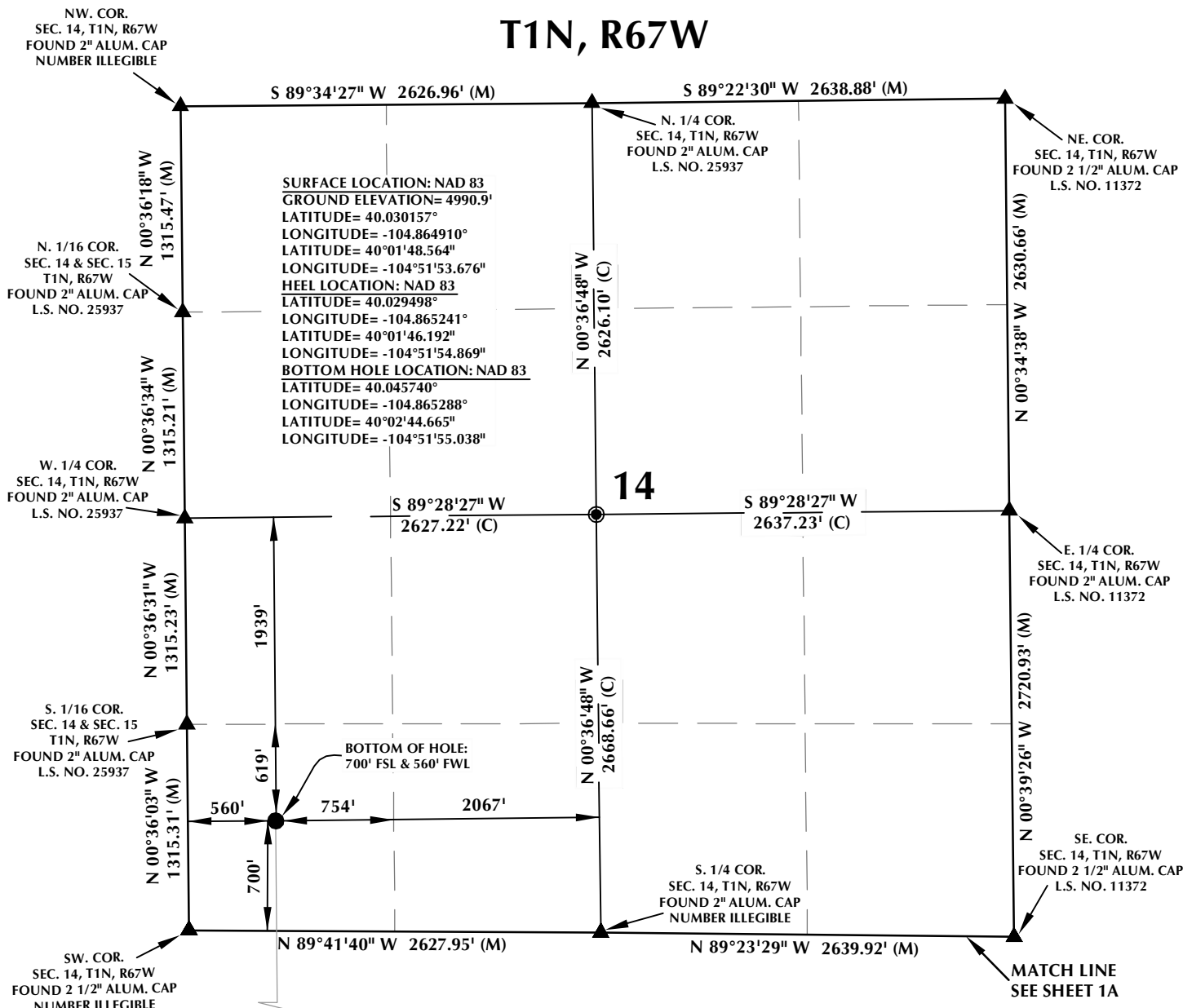


K:\AMDARCO\2015\15\_42\_FLIP\_MEISE\_T1N\_R67W\_23PLATS\PUMA\PLATS.dwg, 8/17/2015 4:00:17 PM, lba



WELL PAD - PUMA 4C-14HZ		<div>Kerr-McGee Oil &amp; Gas Onshore L.P.</div> <div>1099 18th Street Denver, Colorado 80202</div>	<div>609 CONSULTING, LLC</div> <div><div>SHERIDAN OFFICE 1095 Saberton Avenue Sheridan, Wyoming 82801 Phone 307-674-0609</div><div>LOVELAND OFFICE 1635 Foxtrail Drive, Suite 204 Loveland, Colorado 80538 Phone 970-776-4331</div></div>	
PUMA 4C-14HZ WELL LOCATION CERTIFICATE 290' FSL & 661' FWL SWSW (SURFACE) 50' FSL & 568' FWL SWSW (HEEL) LOCATED IN SECTION 23 700' FSL & 560' FWL SWSW (BOTTOM) LOCATED IN SECTION 14 T1N, R67W, 6TH P.M. WELD COUNTY, COLORADO				

# T1N, R67W

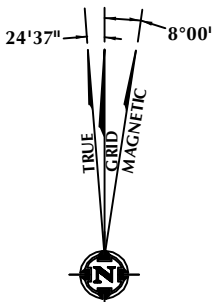


## CERTIFICATE OF SURVEYOR:

THIS IS TO CERTIFY THAT THE ABOVE PLAT WAS PREPARED FROM FIELD NOTES OF ACTUAL SURVEY MADE BY ME OR UNDER MY SUPERVISION AND THAT THE SAME ARE TRUE AND CORRECT TO THE BEST OF MY KNOWLEDGE AND BELIEF. THIS CERTIFICATE DOES NOT REPRESENT A LAND SURVEY PLAT OR IMPROVEMENT SURVEY PLAT AS DEFINED BY C.S. 38-51-102 AND CANNOT BE RELIED UPON TO DETERMINE OWNERSHIP.

*Benjamin J. Reenders*  
 BENJAMIN J. REENDERS  
 PROFESSIONAL LAND SURVEYOR  
 COLORADO REGISTRATION NUMBER 48362  
 8/19/15

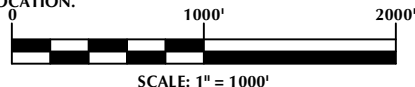
**NOTICE:**  
 ACCORDING TO COLORADO STATE LAW YOU MUST COMMENCE ANY LEGAL ACTION BASED UPON ANY DEFECT IN THIS SURVEY WITHIN THREE YEARS AFTER YOU FIRST DISCOVER SUCH DEFECT. IN NO EVENT MAY ANY ACTION BASED UPON ANY DEFECT IN THIS SURVEY BE COMMENCED MORE THAN TEN YEARS FROM THE DATE ON THE CERTIFICATION SHOWN HEREON.



**NOTE:**  
 MAGNETIC NORTH IS CURRENT AS OF 8/11/2015.  
 MAGNETIC NORTH CHANGES WEST 0°06' PER YEAR.

## NOTES:

- ▲ INDICATES FOUND SECTION CORNER
- INDICATES CALCULATED CORNER
- ELEVATION BASED ON NAVD88 (GEOID09)
- BASIS OF BEARING DERIVED FROM COLORADO COORDINATE SYSTEM 1983 NORTH ZONE UNLESS OTHERWISE NOTED.
- ALL MEASURED DISTANCES ARE GRID.  
COMBINED SCALE FACTOR: .99972876
- OPERATOR: ROB WILSON / PDOP = 1.2
- SEE ADDENDUM TO WELL LOCATION CERTIFICATE FOR EXISTING IMPROVEMENTS WITHIN 500' OF THE WELL PAD.
- WELL FOOTAGES ARE MEASURED AT RIGHT ANGLES TO THE SECTION LINES.
- THE BOTTOM OF HOLE BEARS N00°32'13"W, 5917' FROM THE HEEL LOCATION.



## WELL PAD - PUMA 4C-14HZ

**PUMA 4C-14HZ**  
**WELL LOCATION CERTIFICATE**  
 290' FSL & 661' FWL SWSW (SURFACE)  
 50' FSL & 568' FWL SWSW (HEEL)  
 LOCATED IN SECTION 23  
 700' FSL & 560' FWL SWSW (BOTTOM)  
 LOCATED IN SECTION 14  
 T1N, R67W, 6TH P.M.  
 WELD COUNTY, COLORADO

**Kerr-McGee Oil &  
 Gas Onshore L.P.**  
 1099 18th Street  
 Denver, Colorado 80202



## CONSULTING, LLC

**SHERIDAN OFFICE**  
 1095 Saberton Avenue  
 Sheridan, Wyoming 82801  
 Phone 307-674-0609

**LOVELAND OFFICE**  
 1635 Foxtrail Drive, Suite 204  
 Loveland, Colorado 80538  
 Phone 970-776-4331

DRAFTED BY:	LMO	CHECKED BY:	BJR	SHEET NO:
DATE DRAFTED:	8/19/15	DATE SURVEYED:	5/7/15	<b>1B</b>
REVISED:		FILE NAME:	15-42	1B OF 1