



Photo 1. Photo taken from northeast location, facing South. When interim reclamation starts, this area shall be reclaimed and minimized where production or facilities are no longer necessary.



Photo 2. Photo taken from northeast location, facing Southwest. When interim reclamation starts, this area shall be reclaimed and minimized where production or facilities are no longer necessary.



Photo 3. Photo taken from northeast location, facing Southwest. When interim reclamation starts, this area shall be reclaimed and minimized where production or facilities are no longer necessary.



Photo 4. Photo taken from northeast location, facing West. When interim reclamation starts, this area shall be reclaimed and minimized where production or facilities are no longer necessary.



Photo 5. Photo taken from southeast location, facing Northwest.



Photo 6. Photo taken from southeast location, facing Southwest.



Photo 7. Photo taken from south location, facing Northeast.



Photo 8. Photo taken from south location, facing North. When interim reclamation starts, this area shall be reclaimed and minimized where production or facilities are no longer necessary.



Photo 9. Photo taken from west location, facing North. When interim reclamation starts, this area shall be reclaimed and minimized where production or facilities are no longer necessary.

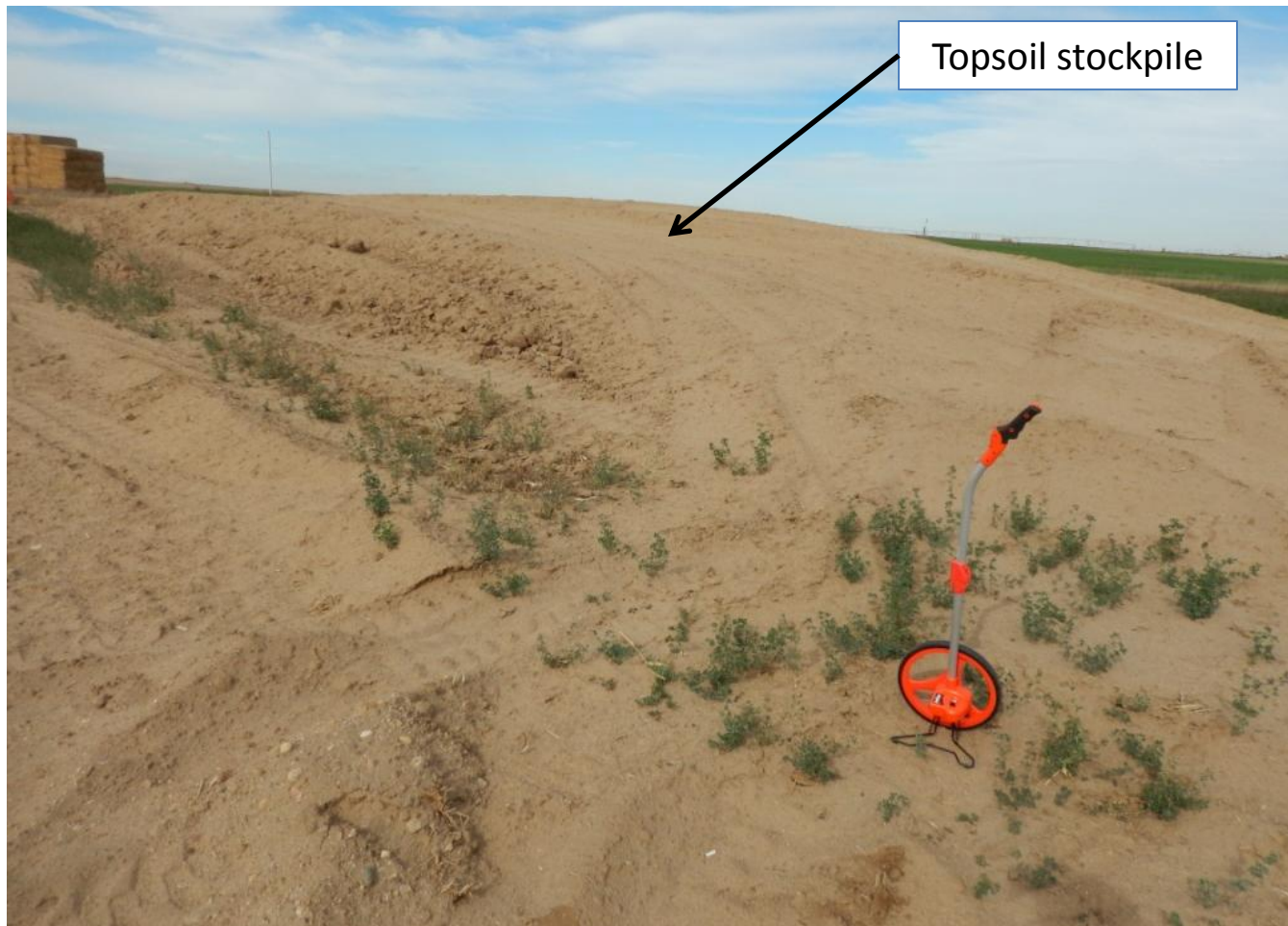


Photo 10. Photo taken from east location, facing North. Perennial vegetation is required for topsoil stabilization.



Photo 11. Kochia (*Kochia sp.*) located throughout northern location is debris and will break off, encroach upon adjacent lands and needs to be removed.



Photo 12. Photo taken from the northwest location, facing East. Unused or unneeded equipment needs to be removed.



Photo 13. Photo taken from the central location, facing East. Need to remove all debris from location.

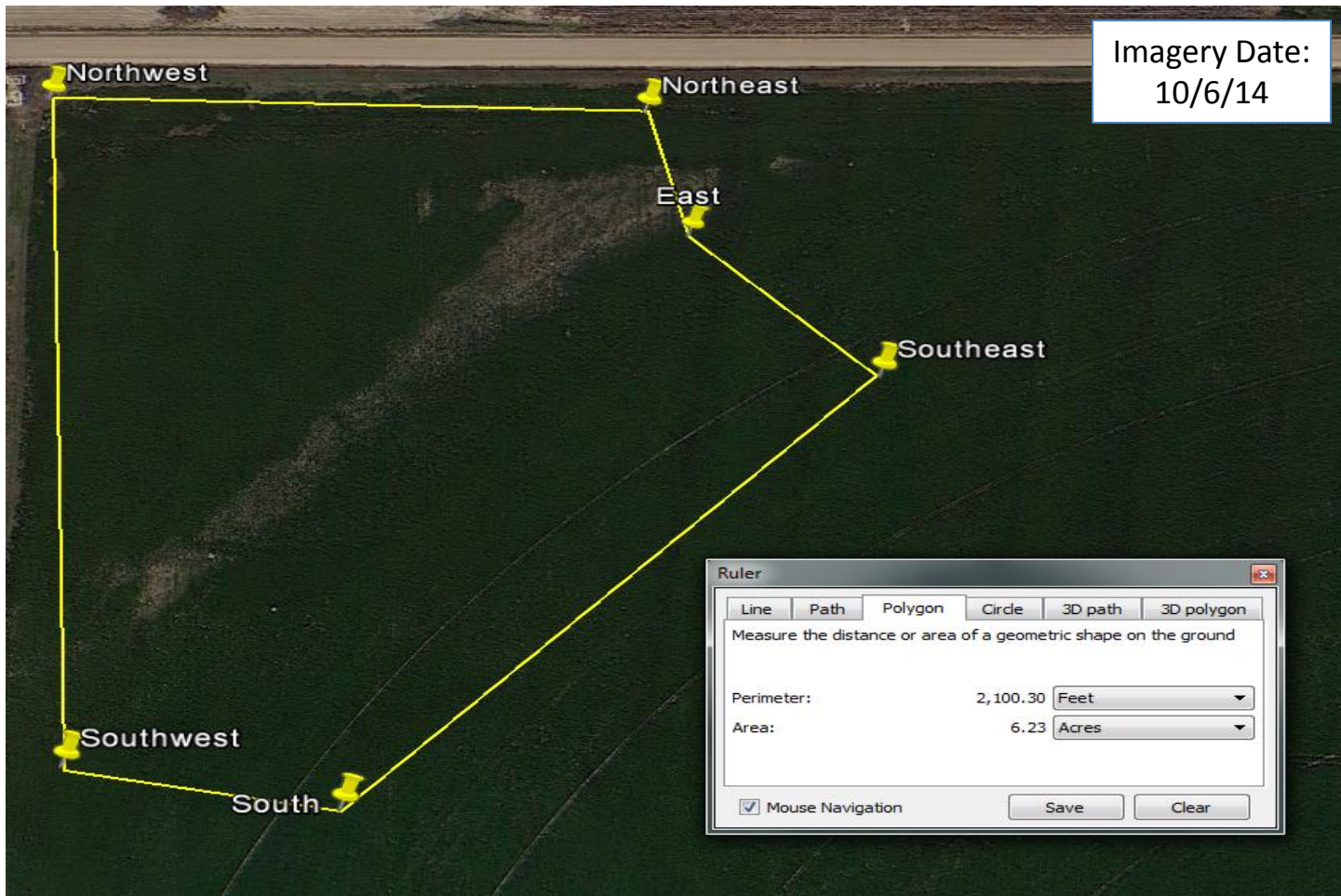


Photo 14. The perimeter, in yellow, illustrates the disturbance boundary as of 10/29/15. Total disturbance equals 6.23 acres.