



Photo 1. Photo taken from north entrance, facing East.



Photo 2. Photo taken from north entrance, facing South.



Photo 3. Photo taken from southwest location, facing North. Need to stabilize soil pile from sediment erosion or needs to be removed, and remove road base soil pile.



Photo 4. Photo taken from southwest location, facing East.



Photo 5. Photo taken from southern location, facing West. When interim reclamation starts, this area shall be reclaimed and minimized where production or facilities are no longer necessary.



Photo 6. Photo taken from southern location, facing Northwest. When interim reclamation starts, this area shall be reclaimed and minimized where production or facilities are no longer necessary.



Photo 7. Photo taken from southern location, facing North. When interim reclamation starts, this area shall be reclaimed and minimized where production or facilities are no longer necessary.

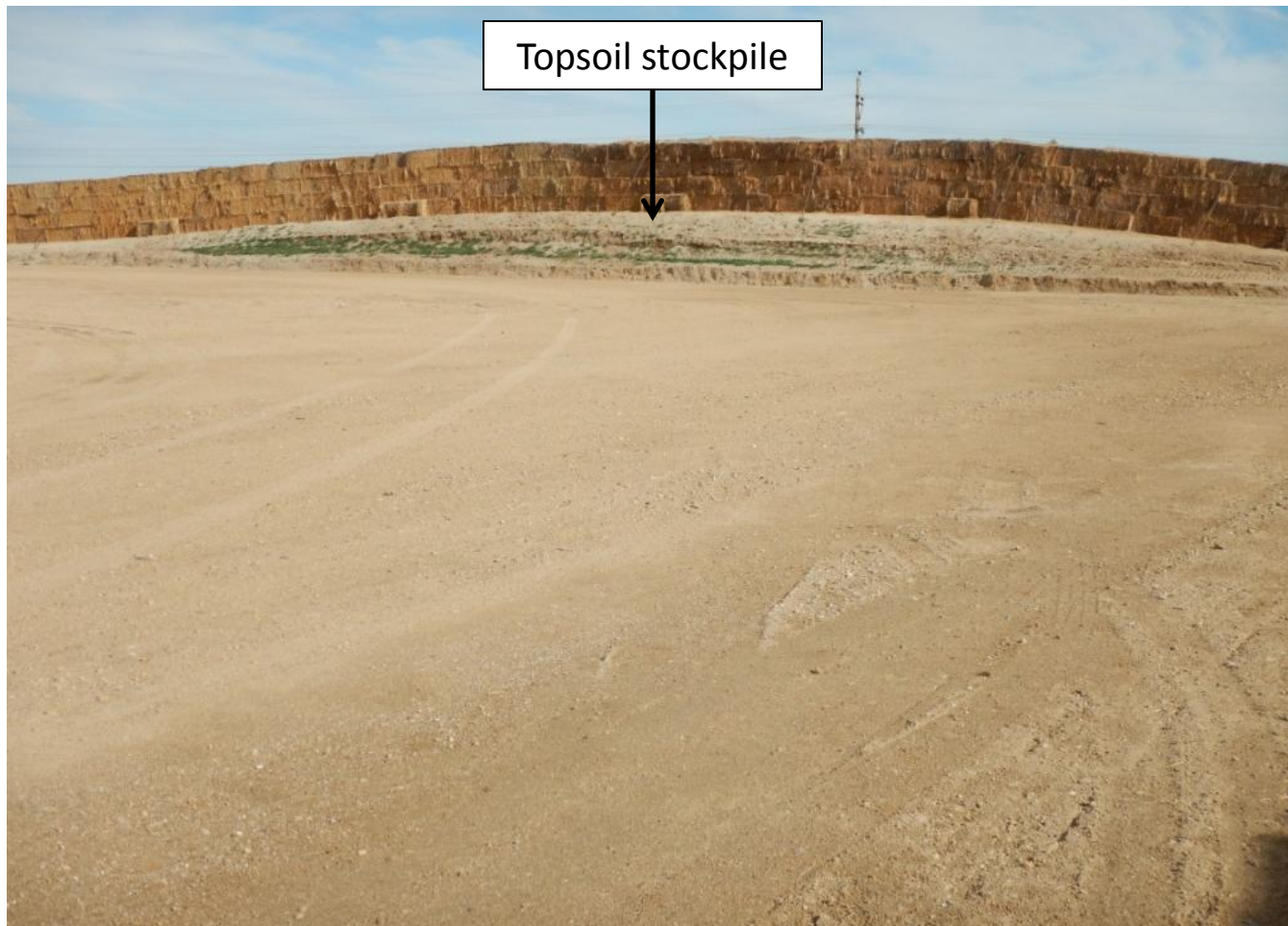


Photo 8. Photo taken from southern location, facing Northeast. When interim reclamation starts, this area shall be reclaimed and minimized where production or facilities are no longer necessary.



Photo 9. Photo taken from southern location, facing East. When interim reclamation starts, this area shall be reclaimed and minimized where production or facilities are no longer necessary.

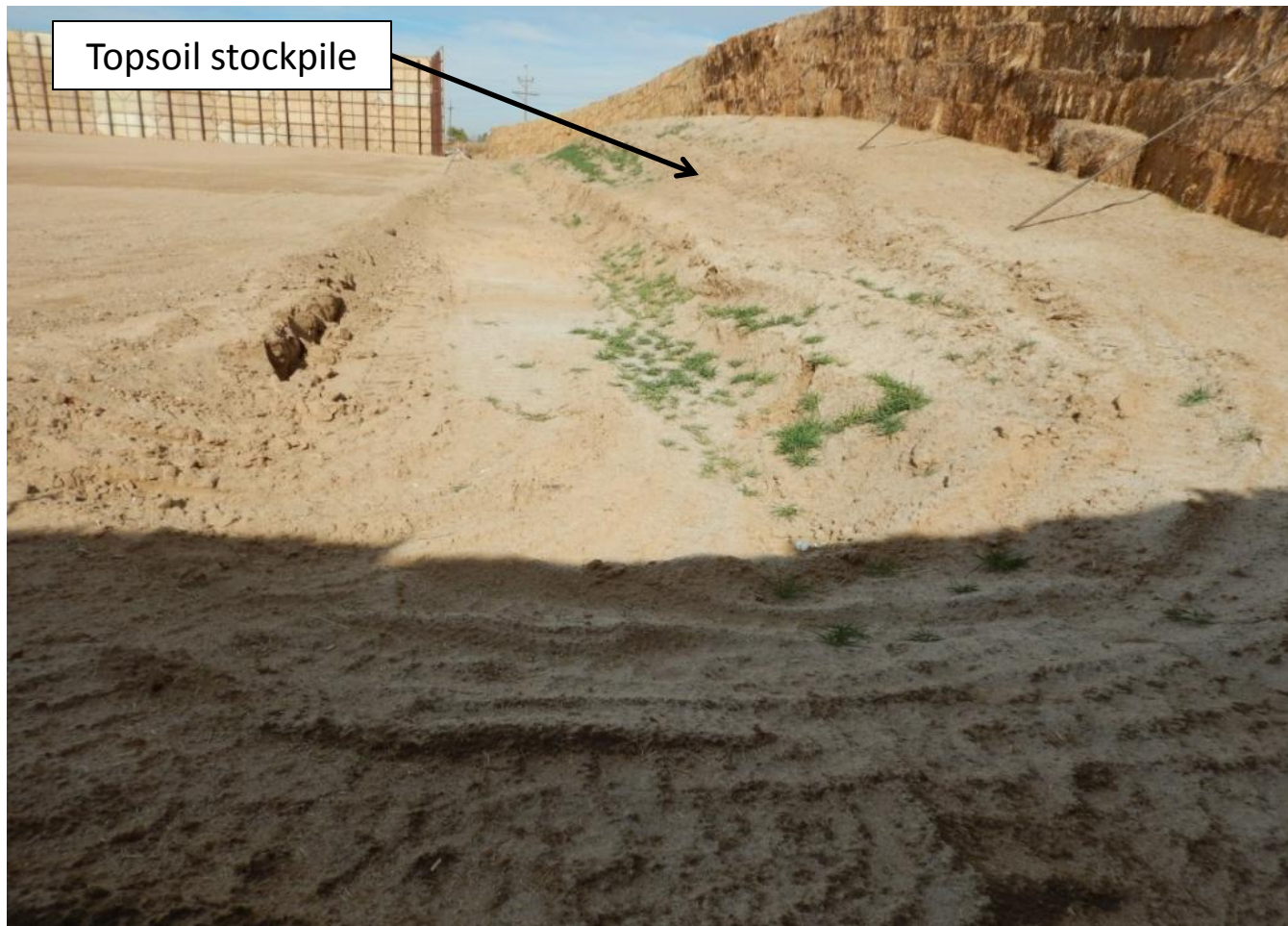


Photo 10. Photo taken from southeast location, facing North. Perennial vegetation is required for topsoil stabilization.



Photo 11. Photo taken from northeast location, facing West. Kochia (*Kochia sp.*) located throughout the northern location is debris and will break off, encroach upon adjacent lands and needs to be removed. Weed maintenance is needed.



Photo 12. Photo taken from outermost southeast location, facing North. When interim reclamation starts, this area shall be reclaimed and minimized where production or facilities are no longer necessary.



Photo 13. Photo taken from outermost east location, facing North. When interim reclamation starts, this area shall be reclaimed and minimized where production or facilities are no longer necessary. Weed maintenance is needed.



Photo 14. Photo taken from northeastern location, facing West. Kochia (*Kochia sp.*) located throughout northern location is debris and will break off, encroach upon adjacent lands and needs to be removed.



Photo 15. Photo taken from northern location, facing West. Unused or unneeded equipment needs to be removed.

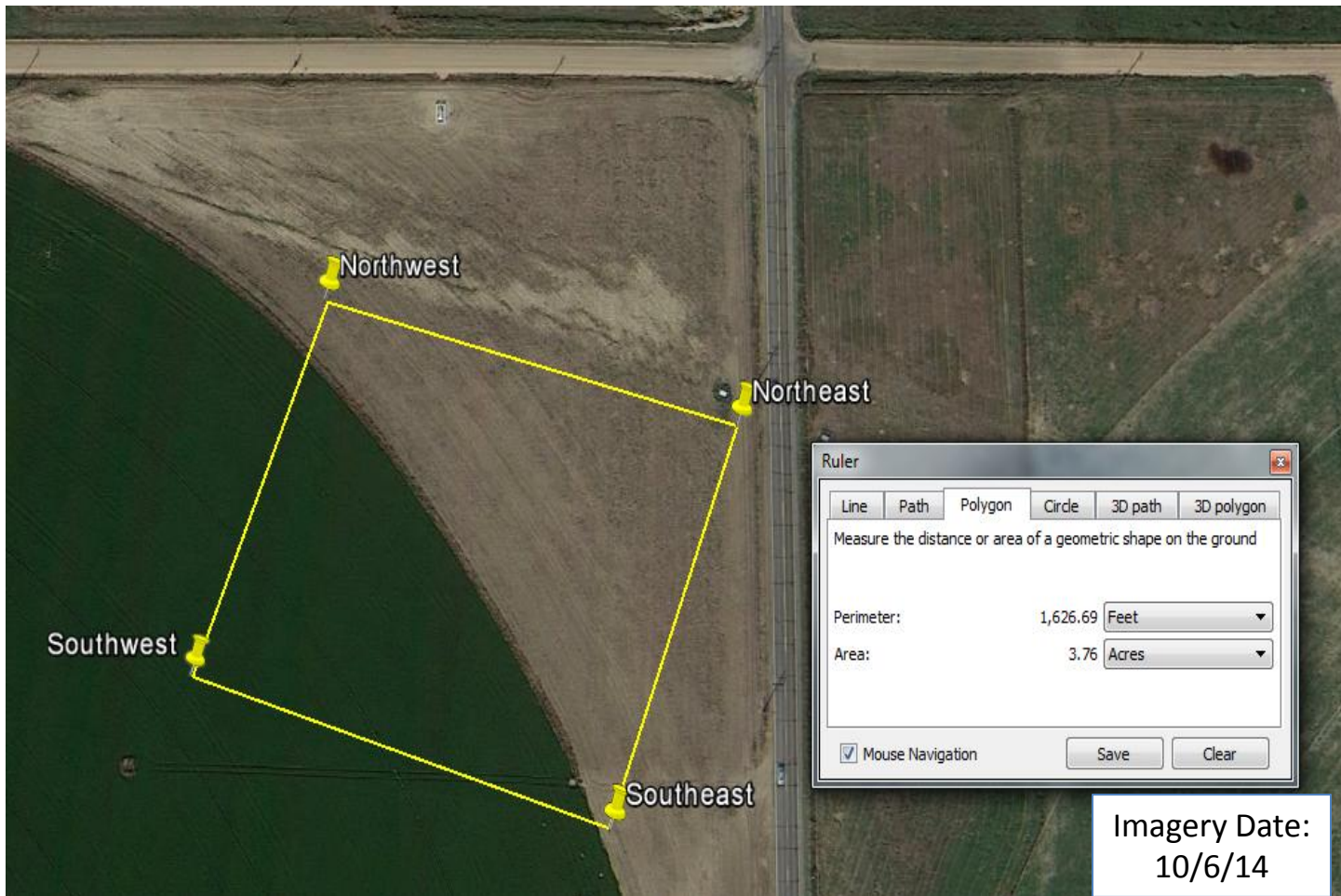


Photo 16. The perimeter, in yellow, illustrates the disturbance boundary as of 10/29/15. Total disturbance equals 3.76 acres.